

Nearly all wetlands. Would need street and alley vacations for development.

DOUGLAS COUNTY TAX-FORFEITED LAND

Information by Parcel

Parcel ID: PA-024-00997-00

Property Address: NONE

Abbreviated Legal Description: LOTS 11 & 12, BLK 58, EAST SUPERIOR 3RD DIV 15-48-13

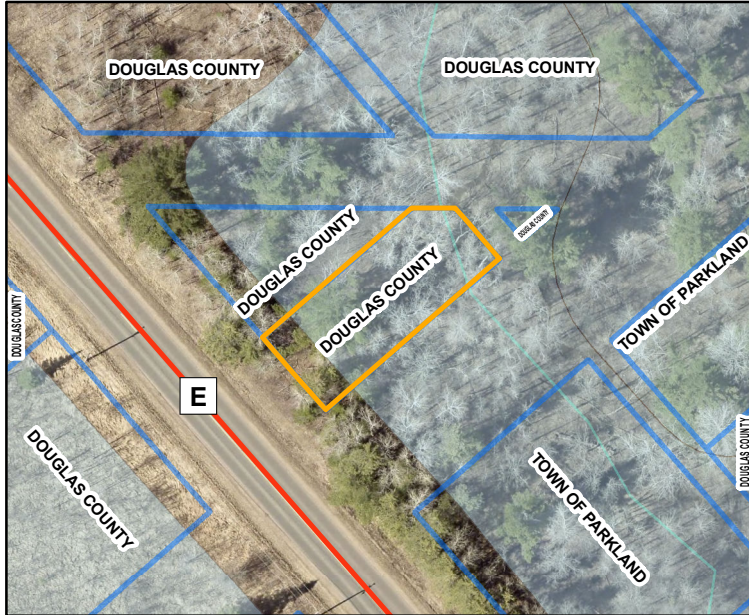
Acreage: APPROXIMATELY 0.12+-

Zoning Classification: R2 RESIDENTIAL 2

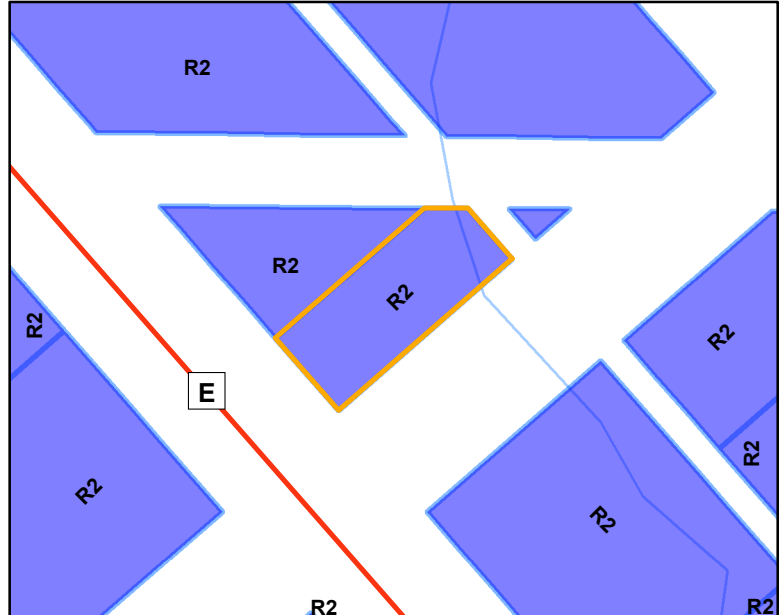
Wetlands: YES

Floodplain: NO

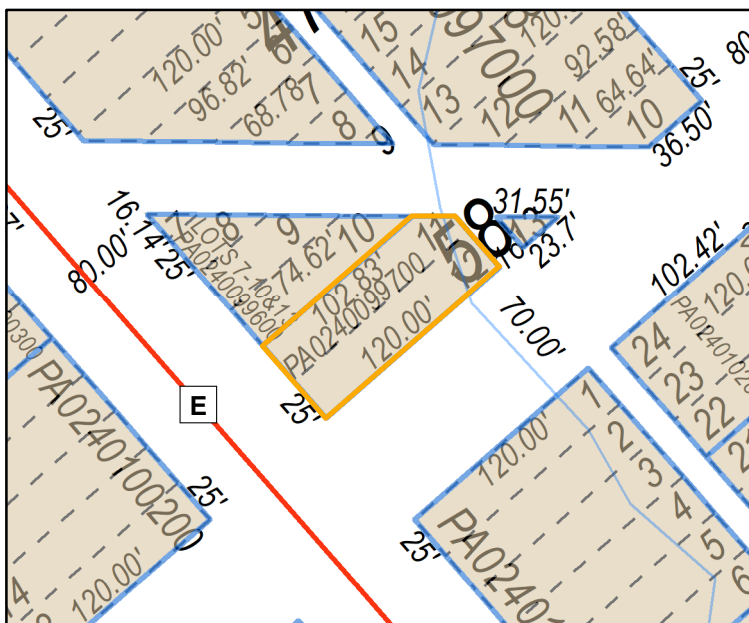
PARCEL MAP WITH 2022 AERIAL PHOTO & WETLANDS



ZONE DISTRICTS



PARCEL MAP WITH LOT LINES



AERIAL PHOTO
VIEW FROM THE SOUTH



AERIAL PHOTO TAKEN SPRING 2022
NO SCALE

Contact the Douglas County Clerks office
for more information. 715-395-1341

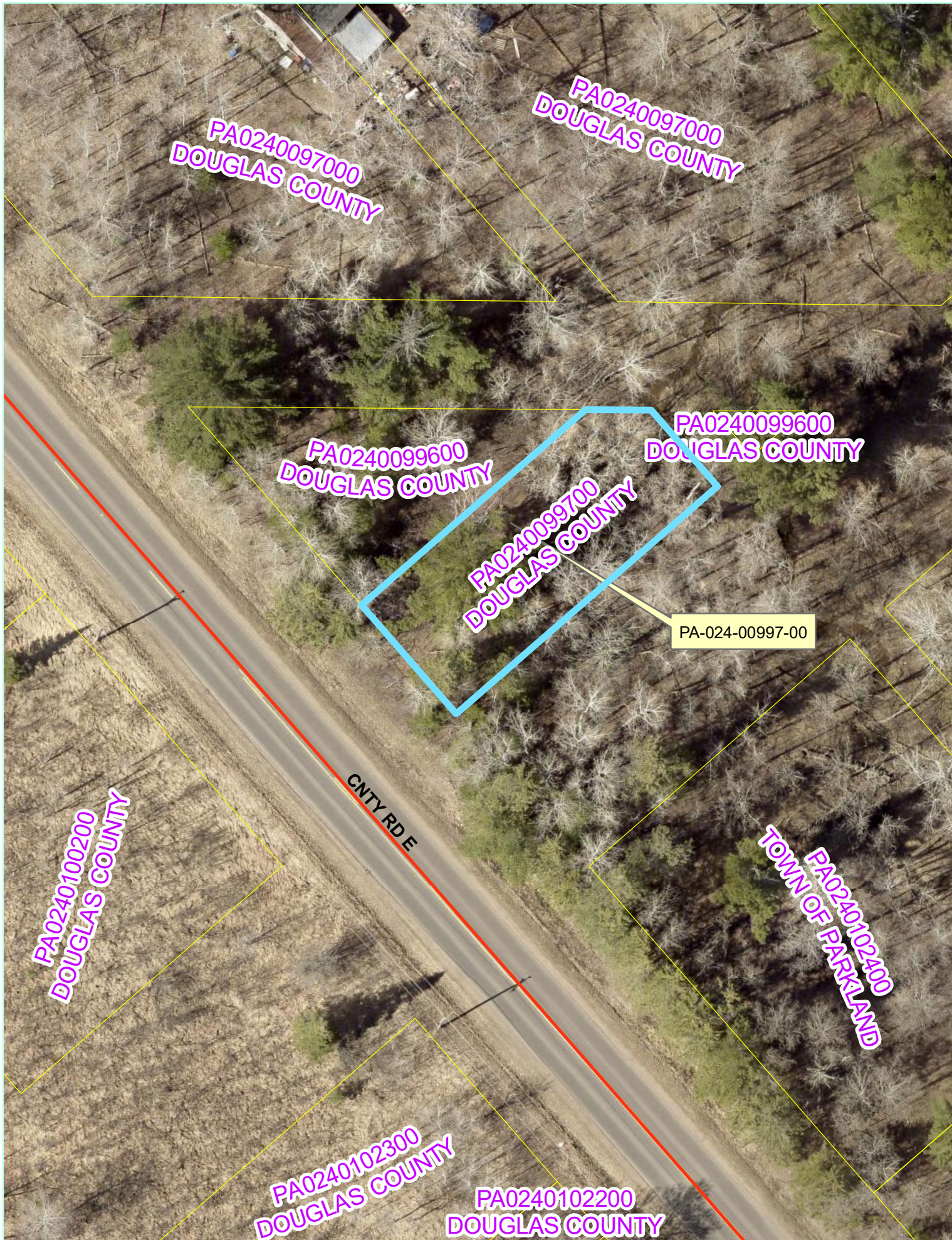
MUNICIPALITY: TOWN OF PARKLAND

Contact Douglas County Zoning
for Zone District Requirements 715-395-1380

Access: Off of COUNTY ROAD E

Any maps of parcels provided by the Douglas County Clerk's Office are for illustration purposes only, and may not accurately reflect the actual legal boundaries of a parcel.





BID NUMBER 27-24
MAP PRODUCED BY LEXI KLASSEN
DOUGLAS COUNTY CLERK'S OFFICE
LINES AND DIMENSIONS ARE APPROXIMATE

1 inch = 42 feet
0 20 40 80 Feet

