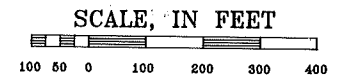


NORTH 1/2 SEC. 5-48-14

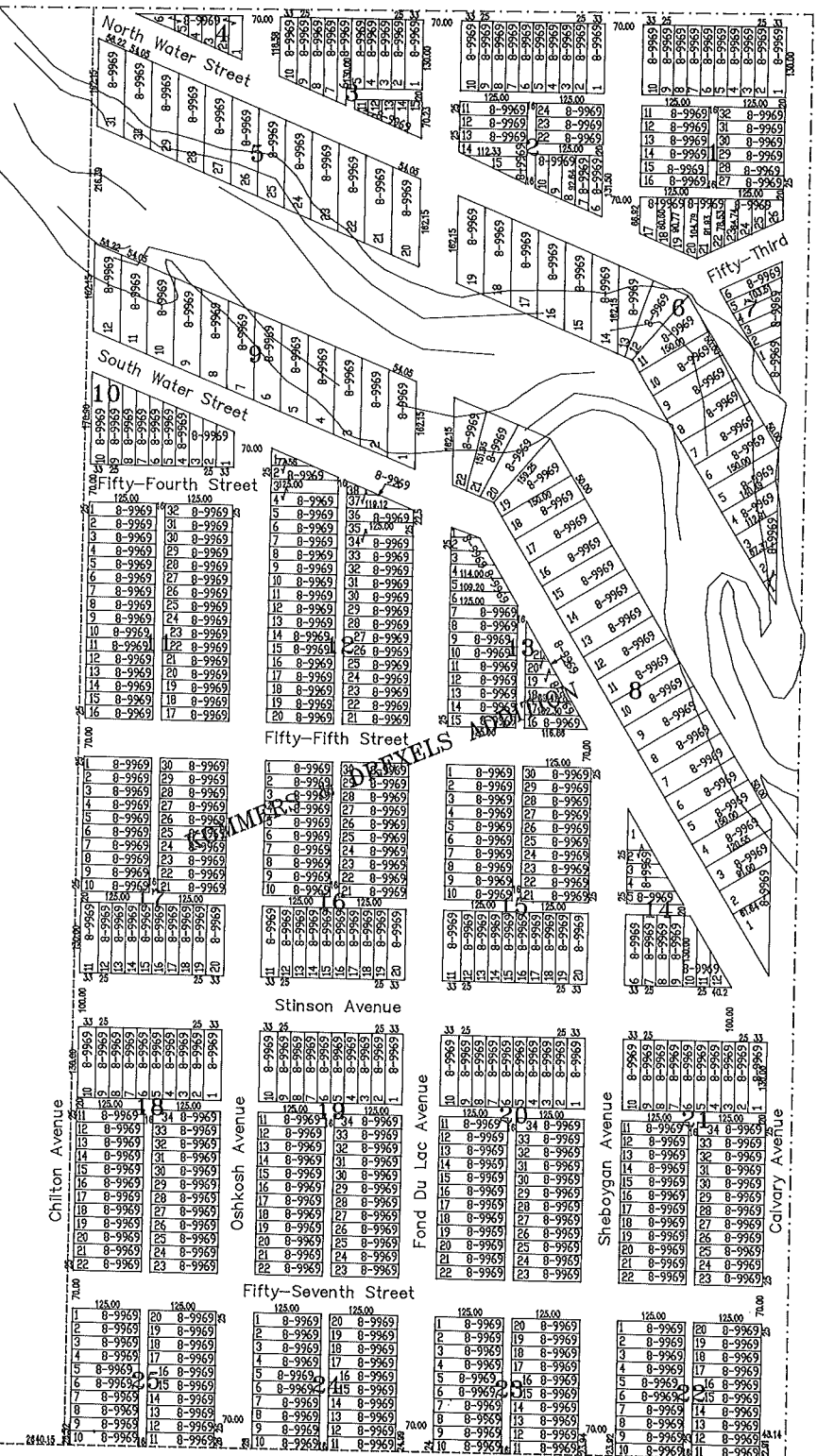
Prepared By:
Douglas County Clerk's Office, P.J. De Luca
15 October 1992



287A.20

8-9969
160.00 Acres

8-9969
316.20 Acres
M/L



The contents of this map has been compiled from many sources and are believed to be substantially accurate. No representation is made as to complete accuracy.