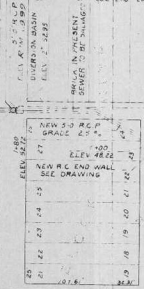


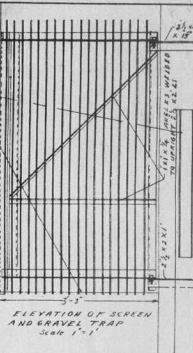
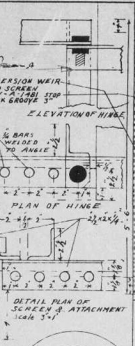
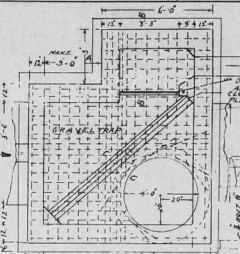
CATLIN

CENTRAL

MAZELEV 3278

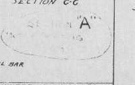
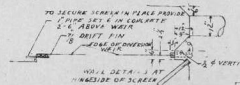
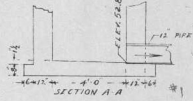
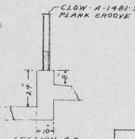
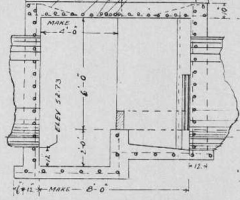
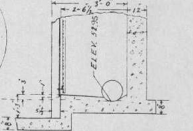
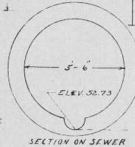
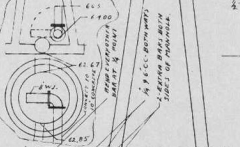


12" BIRCH



MAKE 0'-0" HEAD OF DIVERSION BASIN AND ROOF REINFORCEMENT

FOOTING LINE



**SUPERIOR WISCONSIN**  
 DIVERSION BASIN  
 SOUTH SUPERIOR  
 WPA PROJECT  
 MARCH - 1950  
 THOMAS H. BASTERSH - CITY ENGINEER  
 JOHN WILSON - CONSULTING ENGINEER

REVISED MAY 26, 1959