



Inspection report

Date: 7/20/2021	Work Order:	Weather: Dry	Surveyed By: Steven Bucklin	Certificate Number: U-0819-70306510	Pipe Segment Ref.: CB010016-CB01016A
Year laid:	Pre-cleaning: Light Cleaning	Direction: Upstream	Pipe Joint Length:	Total Length: 39.0'	Length Surveyed: 39.0'

City: City of Superior	Drainage Area:	Upstream MH: CB01016A
Street: N 4TH ST	Media Label: 1080	Up Rim to Invert: 0.0
Location Code: Local rural streets with light traffic	Flow Control: Not Controlled	Downstream MH: CB010016
Location Details:	Sheet Number:	Down Rim to Invert: 0.0
Pipe shape: Circular	Sewer Use: Stormwater Pipe	Total gallons used: 0.0
Pipe size: 12"	Sewer Category: SEC	Joints passed: 0
Pipe material: Reinforced Concrete Pipe	Purpose: Routine Assessment	Joints failed: 0
Lining Method: None	Owner: City of Superior (ESD)	

Additional Info:

1:295	Distance	Code	Observation	Counter	Photo	Grade		
CB010016								
	0.0	ACB	Catch Basin / CB010016	00:00:01	CB010016 -CB01016 A_4986dd			
	0.0	MWL	Water Level, 0% of the vertical dimension	00:00:10	CB010016 -CB01016 A_409614			
	1.5	MGO	Miscellaneous General Observation / DROP INTO THE CATCH BASIN. HAD TO START IN THE PIPE.	00:00:18	CB010016 -CB01016 A_65cdb4			
	2.2	S01 DSF	Deposits Settled Fine, 5% of cross sectional area from 5 o'clock to 7 o'clock, within 8 inch, Start	00:00:39	CB010016 -CB01016 A_edb52a			
	12.8	SZ	Surface Other at 9 o'clock, within 8 inch / A PIECE CHIPPED AWAY FROM THE JOINT	00:01:32	CB010016 -CB01016 A_be4d50			
	18.8	ISB	Infiltration Stain Barrel from 6 o'clock to 12 o'clock, within 8 inch	00:03:12	CB010016 -CB01016 A_004205	M1		
	18.9	S02 CM	Crack Multiple from 4 o'clock to 12 o'clock, within 8 inch, Start	00:02:47	CB010016 -CB01016 A_f33129ff			
	25.5	F01 DSF	Deposits Settled Fine, 5% of cross sectional area from 5 o'clock to 7 o'clock, within 8 inch, Finish	00:03:56	CB010016 -CB01016 A_b5863c	M2		
	25.5	F02 CM	Crack Multiple from 4 o'clock to 12 o'clock, within 8 inch, Finish	00:04:05	CB010016 -CB01016 A_8af9cc6	S3		
	30.4	OBJ	Obstruction Wedged In The Joint, 10% of cross sectional area from 4 o'clock to 6 o'clock, within 8 inch / LOOKS LIKE A PIECE OF TILE	00:04:36	CB010016 -CB01016 A_060db9	M2		
	34.2	CC	Crack Circumferential from 12 o'clock to 12 o'clock	00:05:34	CB010016 -CB01016 A_b0af1ef	S1		
	34.2	ISB	Infiltration Stain Barrel from 7 o'clock to 5 o'clock	00:05:48	CB010016 -CB01016 A_2205b2	M1		
	36.6	CM	Crack Multiple from 9 o'clock to 5 o'clock, within 8 inch	00:07:16	CB010016 -CB01016 A_c4b215	S3		
	39.0	ACB	Catch Basin / CB01016A	00:09:02	CB010016 -CB01016 A_ed73b5			
QSR	QMR	QOR	SPR	MPR	OPR	SPRI	MPRI	OPRI
3211	2612	3226	7.0	14.0	21.0	2.3	1.8	1.9

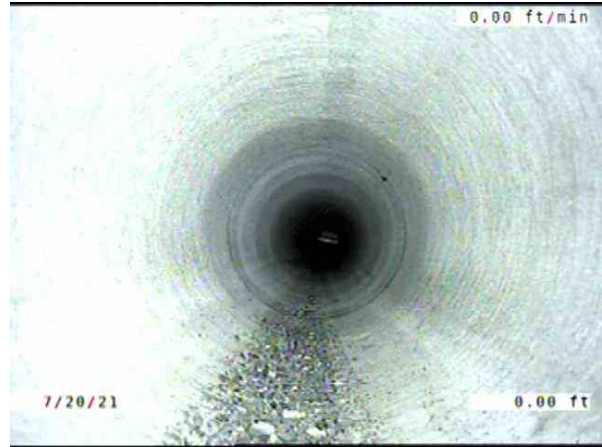


Section Pictures - 7/20/2021 - CB010016-CB01016A

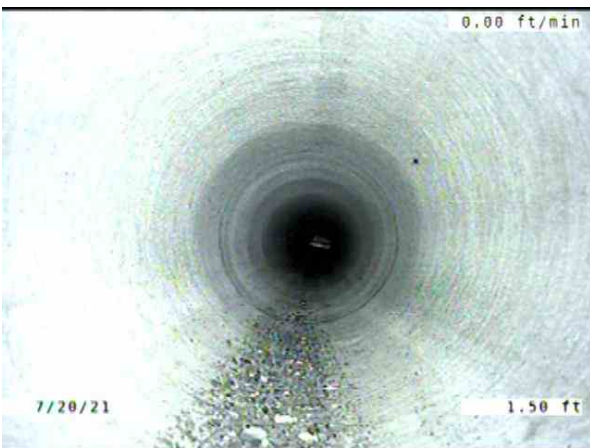
City	Street	Date	Pipe Segment Reference	Section No.
City of Superior	N 4TH ST	7/20/2021	CB010016-CB01016A	93



CB010016-CB01016A_4986dda5-b245-4260-84ef-57f3ec271a33_20210720_174858_647.jpg, 00:00:01, 0.00ft
 Catch Basin / CB010016



CB010016-CB01016A_4096145c-3f2d-44c3-a1f3-6e053ae5775c_20210720_174914_867.jpg, 00:00:10, 0.00ft
 Water Level, 0% of the vertical dimension



CB010016-CB01016A_65cdb412-3ed1-418b-b2f2-6ed5fb821c80_20210720_175612_172.jpg, 00:00:18, 1.50ft
 Miscellaneous General Observation / DROP INTO THE CATCH BASIN. HAD TO START IN THE PIPE.

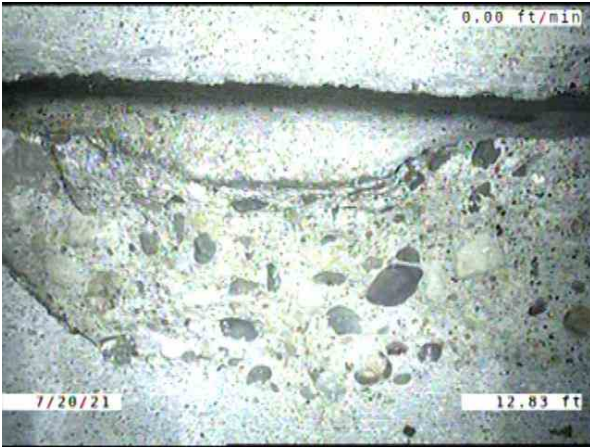


CB010016-CB01016A_edb52a8a-8cc7-4f19-a29d-e89346bb57f3_20210720_175649_226.jpg, 00:00:39, 2.20ft
 Deposits Settled Fine, 5% of cross sectional area from 5 o'clock to 7 o'clock, within 8 inch, Start

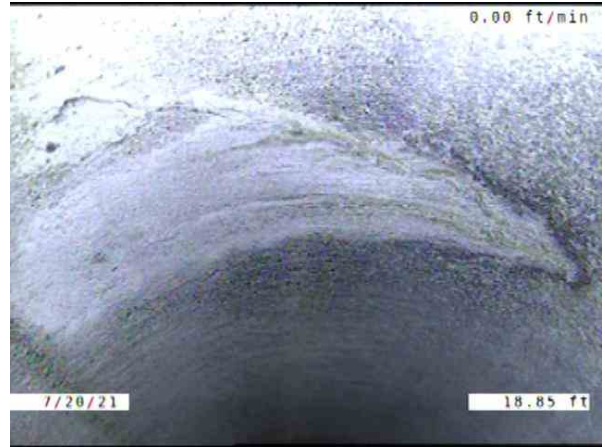


Section Pictures - 7/20/2021 - CB010016-CB01016A

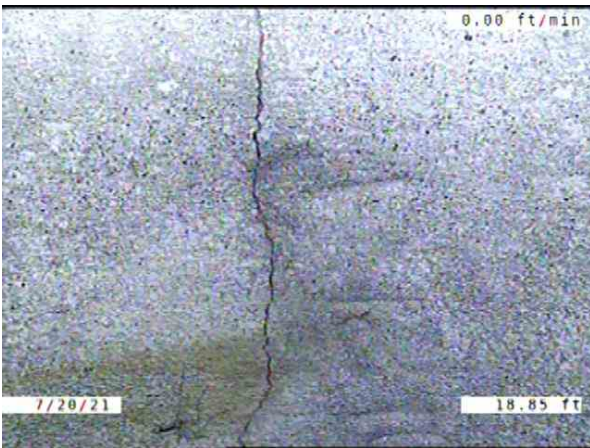
City	Street	Date	Pipe Segment Reference	Section No.
City of Superior	N 4TH ST	7/20/2021	CB010016-CB01016A	93



CB010016-CB01016A_be4d500a-e86d-4cd7-9a37-62a679d782f1_20210720_180339_917.jpg, 00:01:32, 12.83ft
Surface Other at 9 o'clock, within 8 inch / A PIECE CHIPPED AWAY FROM THE JOINT



CB010016-CB01016A_00420518-e71d-4bd5-a80d-f774cb44c3a7_20210720_180540_556.jpg, 00:03:12, 18.85ft
Infiltration Stain Barrel from 6 o'clock to 12 o'clock, within 8 inch



CB010016-CB01016A_f33129ff-9715-4f85-b52f-c733b4d8ba61_20210720_180506_000.jpg, 00:02:47, 18.85ft
Crack Multiple from 4 o'clock to 12 o'clock, within 8 inch, Start



CB010016-CB01016A_b5863c2f-b0e4-4595-a674-2fb0ae384d43_20210720_180628_792.jpg, 00:03:56, 25.45ft
Deposits Settled Fine, 5% of cross sectional area from 5 o'clock to 7 o'clock, within 8 inch, Finish



Section Pictures - 7/20/2021 - CB010016-CB01016A

City	Street	Date	Pipe Segment Reference	Section No.
City of Superior	N 4TH ST	7/20/2021	CB010016-CB01016A	93



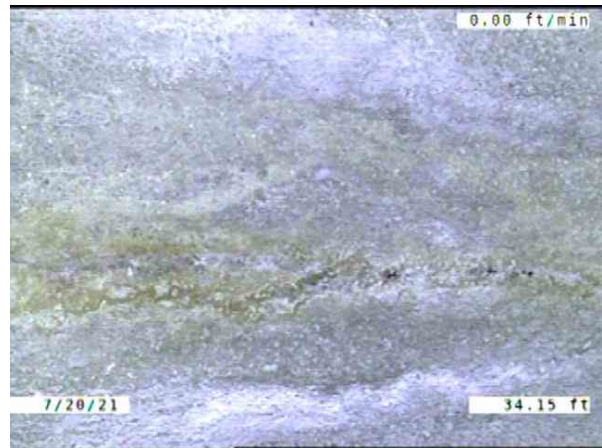
CB010016-CB01016A_8af9cc66-3db8-4760-8e84-a8409a051a45_20210720_180652_406.jpg, 00:04:05, 25.46ft
Crack Multiple from 4 o'clock to 12 o'clock, within 8 inch, Finish



CB010016-CB01016A_060db97e-219d-450f-9333-9e583b1b32df_20210720_180749_288.jpg, 00:04:36, 30.35ft
Obstruction Wedged In The Joint, 10% of cross sectional area from 4 o'clock to 6 o'clock, within 8 inch / LOOKS LIKE A PIECE OF TILE



CB010016-CB01016A_b0af1ef9-d983-4076-a33f-e91eb4c8ed24_20210720_180856_841.jpg, 00:05:34, 34.15ft
Crack Circumferential from 12 o'clock to 12 o'clock

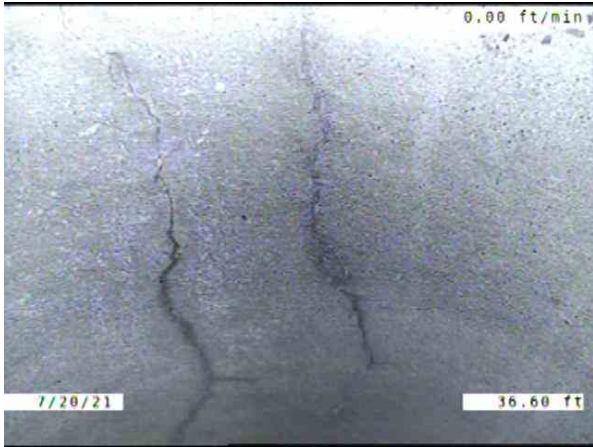


CB010016-CB01016A_2205b232-f031-45b9-9468-de8d3b2974b6_20210720_180915_663.jpg, 00:05:48, 34.15ft
Infiltration Stain Barrel from 7 o'clock to 5 o'clock

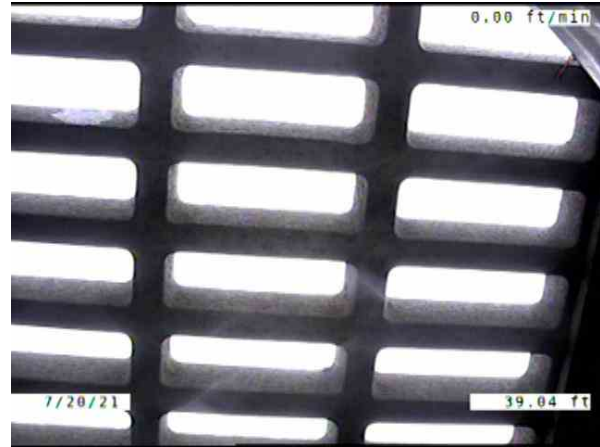


Section Pictures - 7/20/2021 - CB010016-CB01016A

City	Street	Date	Pipe Segment Reference	Section No.
City of Superior	N 4TH ST	7/20/2021	CB010016-CB01016A	93



CB010016-CB01016A_c4b215dc-f011-491b-9157-d68e0f862a
c6_20210720_181058_186.jpg, 00:07:16, 36.60ft
Crack Multiple from 9 o'clock to 5 o'clock, within 8 inch



CB010016-CB01016A_ed73b532-0884-43d7-8aeb-fc74f8339
d06_20210720_181247_957.jpg, 00:09:02, 39.04ft
Catch Basin / CB01016A