



## Inspection report

Date: <b>7/23/2021</b>	Work Order:	Weather: <b>Dry</b>	Surveyed By: <b>Steven Bucklin</b>	Certificate Number: <b>U-0819-70306510</b>	Pipe Segment Ref.: <b>CB010025-CB01065B</b>
Year laid:	Pre-cleaning: <b>Light Cleaning</b>	Direction: <b>Downstream</b>	Pipe Joint Length:	Total Length: <b>76.0'</b>	Length Surveyed: <b>19.9'</b>

City: <b>City of Superior</b>	Drainage Area:	Upstream MH: <b>CB01065B</b>
Street: <b>OGDEN AVE</b>	Media Label: <b>1080</b>	Up Rim to Invert: <b>0.0</b>
Location Code: <b>Local rural streets with light traffic</b>	Flow Control: <b>Not Controlled</b>	Downstream MH: <b>CB010025</b>
Location Details: <b>UNDER EARTH RIDER BREWERY'S FE</b>	Sheet Number:	Down Rim to Invert: <b>0.0</b>
Pipe shape: <b>Circular</b>	Sewer Use: <b>Stormwater Pipe</b>	Total gallons used: <b>0.0</b>
Pipe size: <b>12"</b>	Sewer Category: <b>SEC</b>	Joints passed: <b>0</b>
Pipe material: <b>Reinforced Concrete Pipe</b>	Purpose: <b>Routine Assessment</b>	Joints failed: <b>0</b>
Lining Method: <b>None</b>	Owner: <b>City of Superior (ESD)</b>	

Additional Info:

1:574	Distance	Code	Observation	Counter	Photo	Grade		
<b>CB01065B</b>								
	0.0	ACB	Catch Basin / CB01065B	00:00:01	CB010025 -CB01065 B_cdc857f			
	0.0	MWL	Water Level, 0% of the vertical dimension	00:01:01	CB010025 -CB01065 B_4d8a84			
	8.1	B	Broken from 12 o'clock to 12 o'clock	00:02:25	CB010025 -CB01065 B_bed548	S4		
	10.5	S01 SAV	Surface Damage Aggregate Visible from 12 o'clock to 12 o'clock, within 8 inch, Start	00:03:19	CB010025 -CB01065 B_67719e			
	15.5	MWL	Water Level, 25% of the vertical dimension	00:04:10	CB010025 -CB01065 B_28069e			
	18.5	LR	Line Right, change to: 50%	00:05:06	CB010025 -CB01065 B_0a0824	M4		
	18.7	JAL	Joint Angular Large	00:05:47	CB010025 -CB01065 B_e33b9d	S4		
	18.7	MMC	Miscellaneous Material Change, Ductile Iron Pipe / RCP TO DIP	00:06:02	CB010025 -CB01065 B_ddb843			
	19.5	F01 SAV	Surface Damage Aggregate Visible from 12 o'clock to 12 o'clock, within 8 inch, Finish	00:06:34	CB010025 -CB01065 B_719ae1	S2		
	19.9	SSC	Surface Spalling of Damage Coating from 9 o'clock to 3 o'clock, within 8 inch	00:08:03	CB010025 -CB01065 B_851a55	S1		
	19.9	MSA	Miscellaneous Survey Abandoned / CAMERA CANT MAKE IT PAST THE ANGLED JOINT	00:08:19	CB010025 -CB01065 B_932083			
	76.0		End of pipe					
<b>CB010025</b>								
QSR	QMR	QOR	SPR	MPR	OPR	SPRI	MPRI	OPRI
4222	4100	4322	13.0	4.0	17.0	2.6	4.0	2.8



## Section Pictures - 7/23/2021 - CB010025-CB01065B

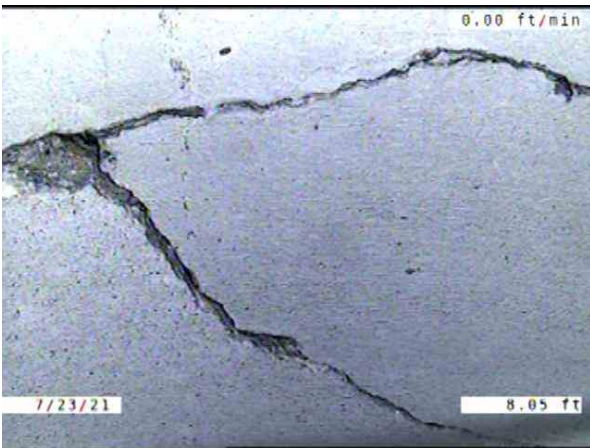
City	Street	Date	Pipe Segment Reference	Section No.
City of Superior	OGDEN AVE	7/23/2021	CB010025-CB01065B	137



CB010025-CB01065B\_cdc857f8-3cee-46ba-9f8d-5377dcc34c55\_20210723\_125605\_957.jpg, 00:00:01, 0.00ft  
Catch Basin / CB01065B



CB010025-CB01065B\_4d8a84bd-efa4-4b53-bf4c-1015eaf0bc5e\_20210723\_125705\_322.jpg, 00:01:01, 0.00ft  
Water Level, 0% of the vertical dimension



CB010025-CB01065B\_bed54896-3772-4112-b642-b8fd2ed5188f\_20210723\_125836\_161.jpg, 00:02:25, 8.05ft  
Broken from 12 o'clock to 12 o'clock



CB010025-CB01065B\_c53109af-2e1b-470e-9483-cb1390b7a348\_20210723\_125949\_214.jpg, 00:03:19, 10.48ft  
Surface Damage Aggregate Visible from 12 o'clock to 12 o'clock, within 8 inch, Start

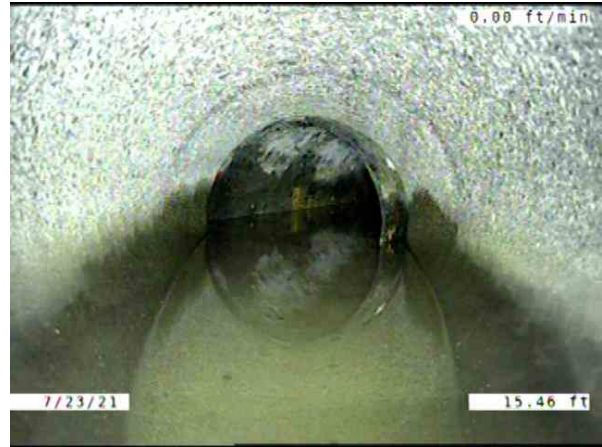


## Section Pictures - 7/23/2021 - CB010025-CB01065B

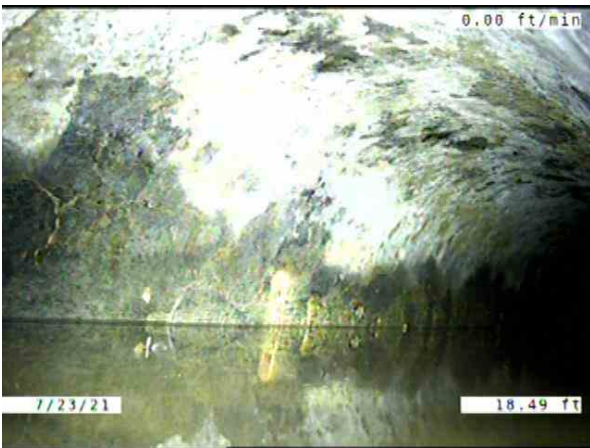
City	Street	Date	Pipe Segment Reference	Section No.
City of Superior	OGDEN AVE	7/23/2021	CB010025-CB01065B	137



CB010025-CB01065B\_67719e4b-8ec2-45bd-a992-b97a42db27c2\_20210723\_125956\_295.jpg, 00:03:19, 10.48ft  
Surface Damage Aggregate Visible from 12 o'clock to 12 o'clock, within 8 inch, Start



CB010025-CB01065B\_28069e5c-82cf-478d-8b1e-73ede41c5d48\_20210723\_130054\_635.jpg, 00:04:10, 15.46ft  
Water Level, 25% of the vertical dimension



CB010025-CB01065B\_0a082442-c604-4f75-9a25-e84b6719b6d3\_20210723\_130210\_742.jpg, 00:05:06, 18.49ft  
Line Right, change to: 50%

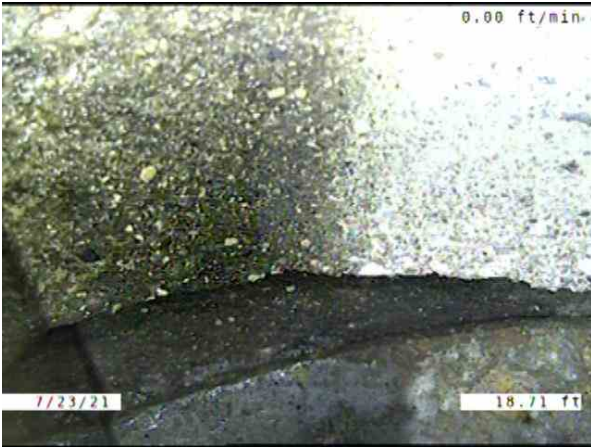


CB010025-CB01065B\_4a566221-a057-4cc2-87ba-d21c614eb53e\_20210723\_130219\_344.jpg, 00:05:06, 18.49ft  
Line Right, change to: 50%

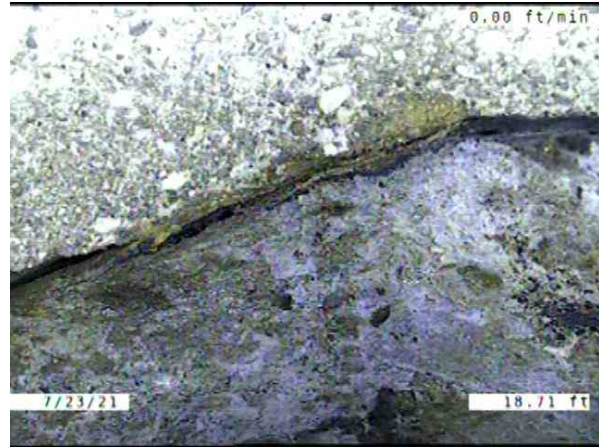


## Section Pictures - 7/23/2021 - CB010025-CB01065B

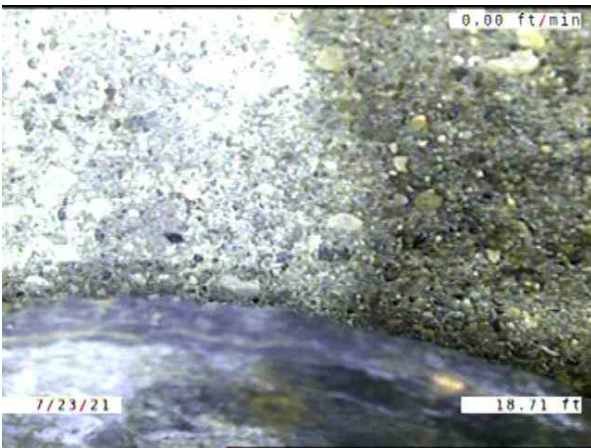
City	Street	Date	Pipe Segment Reference	Section No.
City of Superior	OGDEN AVE	7/23/2021	CB010025-CB01065B	137



CB010025-CB01065B\_e33b9d45-e3e6-4953-b095-a23f23cdc64b\_20210723\_130253\_053.jpg, 00:05:47, 18.71ft  
Joint Angular Large



CB010025-CB01065B\_ddb84318-948d-4677-9ebb-0a364f747f03\_20210723\_130326\_419.jpg, 00:06:02, 18.71ft  
Miscellaneous Material Change, Ductile Iron Pipe / RCP TO DIP



CB010025-CB01065B\_85aaec56-e5ac-447a-8fc2-e34f6335c7b9\_20210723\_130334\_851.jpg, 00:06:02, 18.71ft  
Miscellaneous Material Change, Ductile Iron Pipe / RCP TO DIP



CB010025-CB01065B\_719ae133-4872-43aa-9934-81379db87ee9\_20210723\_130403\_108.jpg, 00:06:34, 19.45ft  
Surface Damage Aggregate Visible from 12 o'clock to 12 o'clock, within 8 inch, Finish

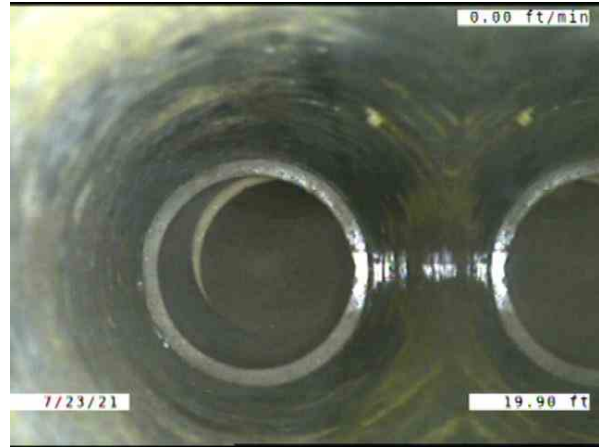


## Section Pictures - 7/23/2021 - CB010025-CB01065B

City	Street	Date	Pipe Segment Reference	Section No.
City of Superior	OGDEN AVE	7/23/2021	CB010025-CB01065B	137



CB010025-CB01065B\_851a551f-b992-4e5d-96b6-e7666cfb1002\_20210723\_130630\_248.jpg, 00:08:03, 19.88ft  
 Surface Spalling of Damage Coating from 9 o'clock to 3 o'clock, within 8 inch



CB010025-CB01065B\_f186cc2f-0b90-4ada-a29e-0e4d25d8bcb3\_20210723\_130845\_363.jpg, 00:08:19, 19.90ft  
 Miscellaneous Survey Abandoned / CAMERA CANT MAKE IT PAST THE ANGLED JOINT



CB010025-CB01065B\_932083d0-5c72-4a21-a2c2-394ed3a39dfb\_20210723\_130918\_336.jpg, 00:08:19, 19.90ft  
 Miscellaneous Survey Abandoned / CAMERA CANT MAKE IT PAST THE ANGLED JOINT