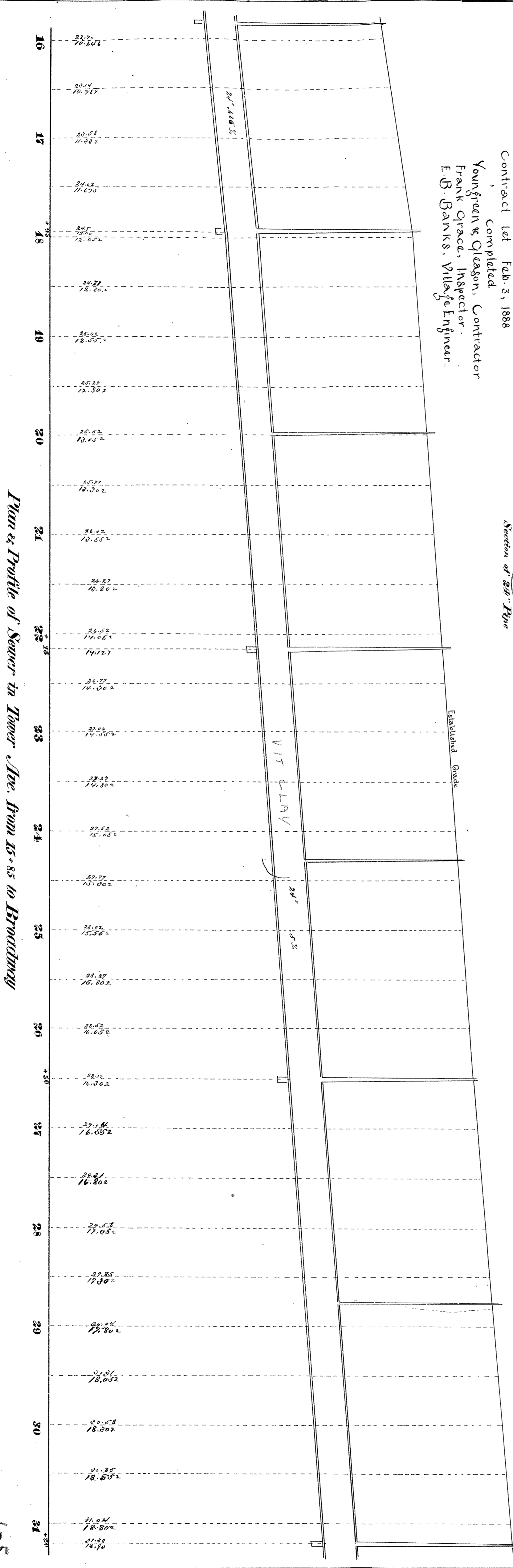
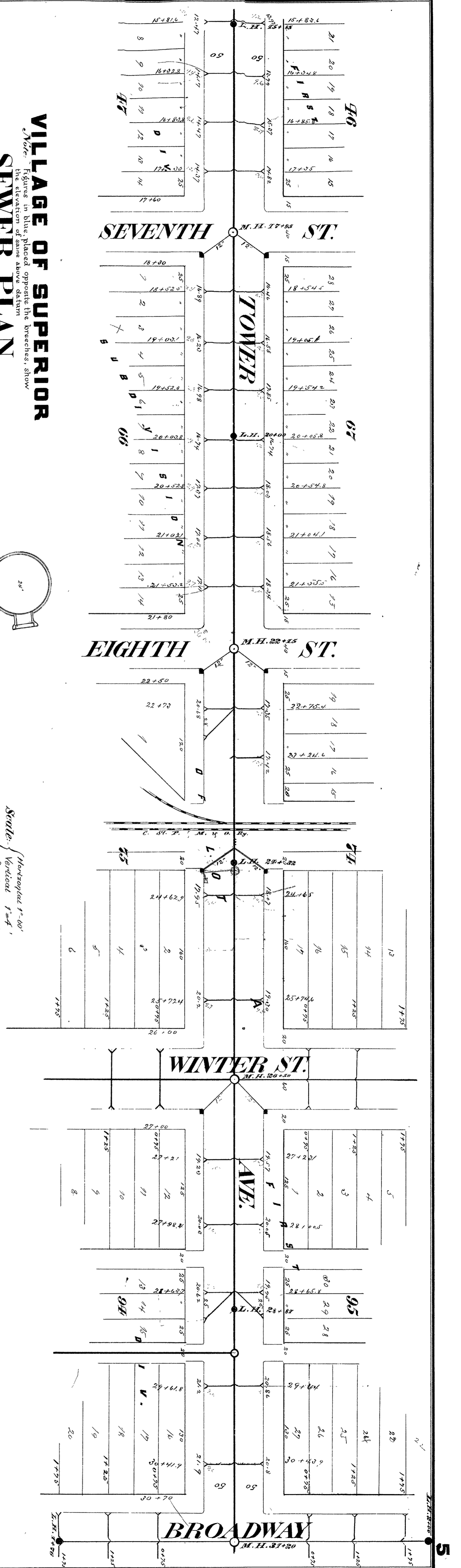


VILLAGE OF SUPERIOR SEWER PLAN

Contract let Feb. 3, 1888
Completed
Younggreen & Gleason, Contractor
Frank Grace, Inspector
E. B. Banks, Village Engineer.

Section of 24" Pipe

Scale: Horizontal 1"=60'
Vertical 1"=4'
Section 1"=3'



Plan & Profile of Sewer to Tower Ave. from 15+85 to Broadway