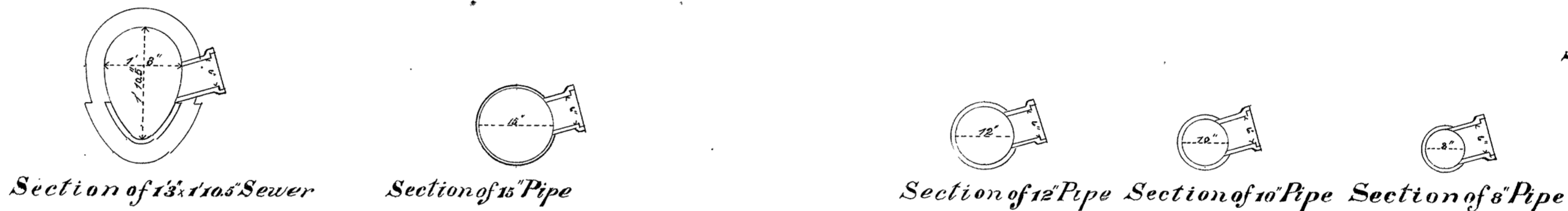
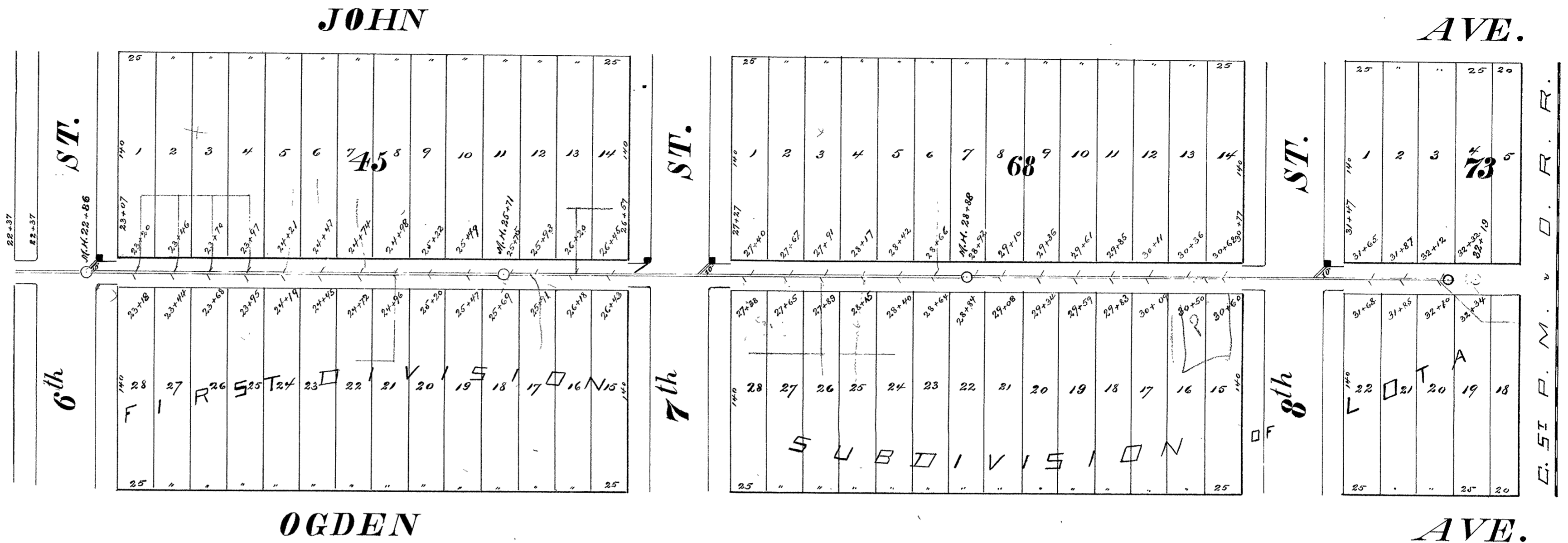


CITY OF SUPERIOR SEWER PLAN

Contract let April 4, 1890
completed Oct. 1, 1890
Kirkland & Starkey, Contractor
J. H. Little, Inspector
E. B. Banks, City Engineer.



Scale { Horizontal 1 inch = 60 ft.
Vertical 1 " = 4 "
Sectional 1 " = 2 "

