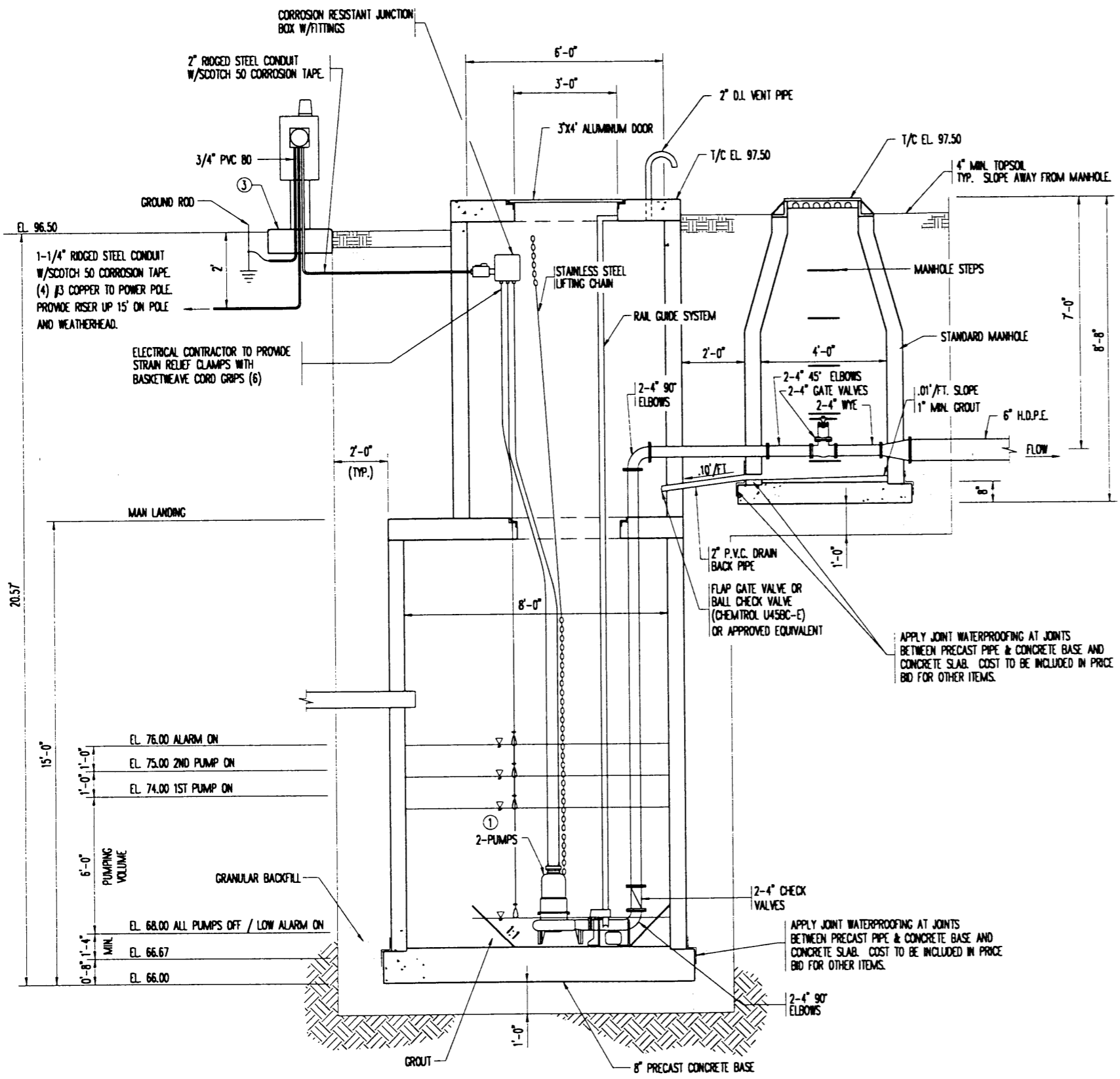
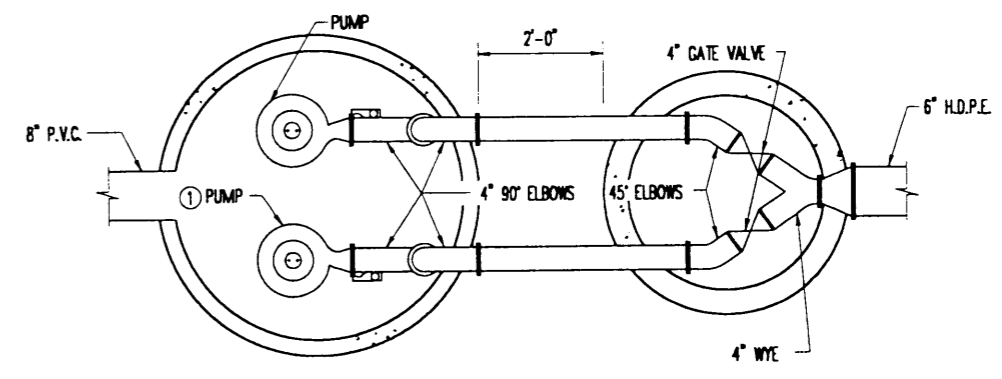


GENERAL NOTES:

- ① PUMPS SHALL BE 380 GPM AT 62 FEET TDH.
- ② TOP OUTSIDE EDGE OF CONCRETE COVER TO BE CHAMFERED 3/4"
- ③ FOUNDATION SHALL BE 6" LONGER AND WIDER THAN CABINET BASE TO BE INSTALLED, OR AS SPECIFIED IN SPECIAL PROVISIONS.
FOUNDATION SHALL BE 18" THICK MIN., WITH A MINIMUM 16" BELOW GROUND LINE AND 2" ABOVE.
UPPER PART OF FOUNDATION SHALL BE BEVELED OR CHAMFERED IN A NEAT MANNER AS DIRECTED BY THE ENGINEER IN THE FIELD.
CONDUIT (NUMBERS AND SIZE) INTO FOUNDATION SHALL BE AS REQUIRED IN PLANS OR SPECIAL PROVISIONS.



LIFT STATION ELEVATION
(NOT TO SCALE)



PLAN OF LIFT STATION
(NOT TO SCALE)