

Office Copy

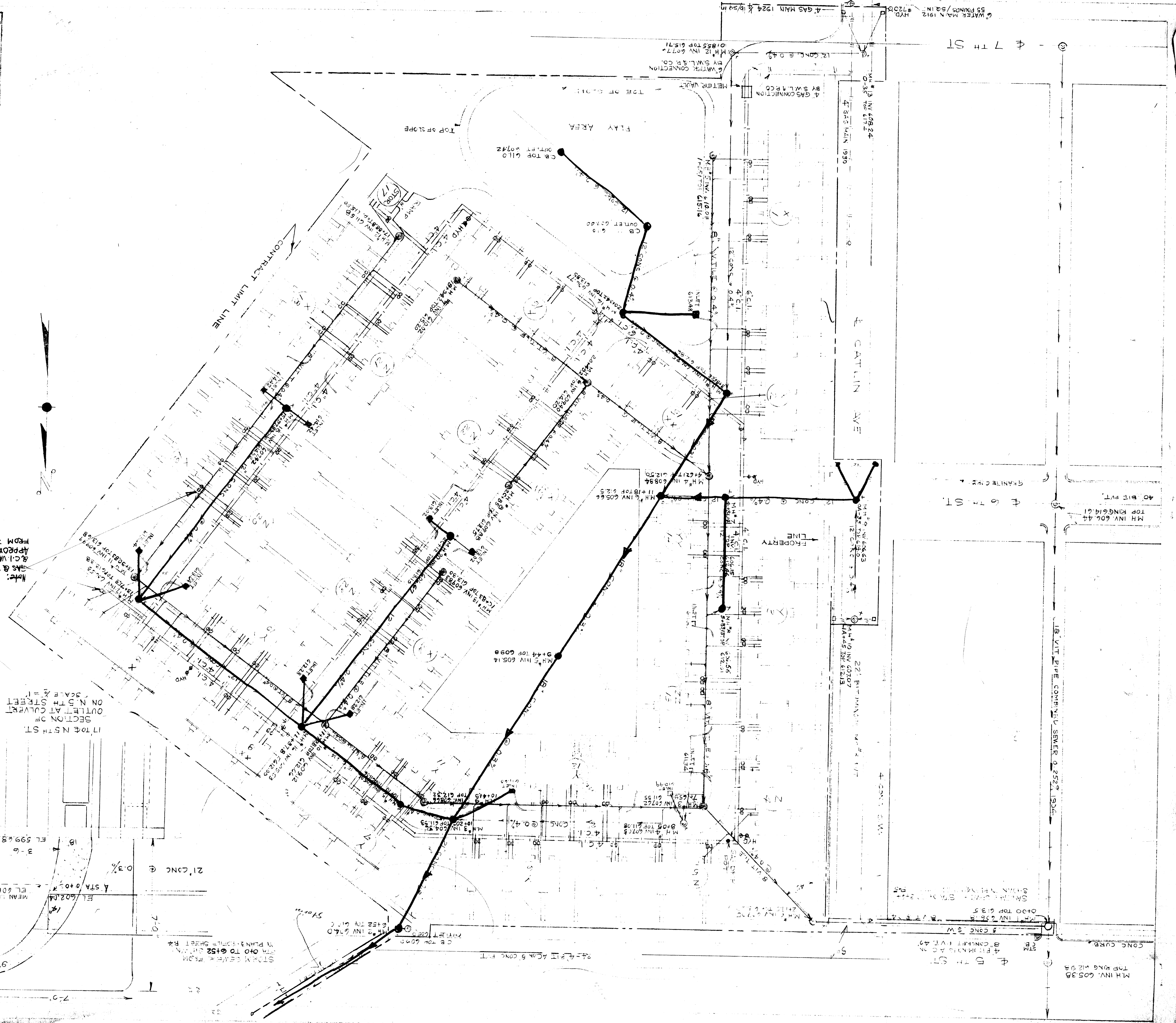
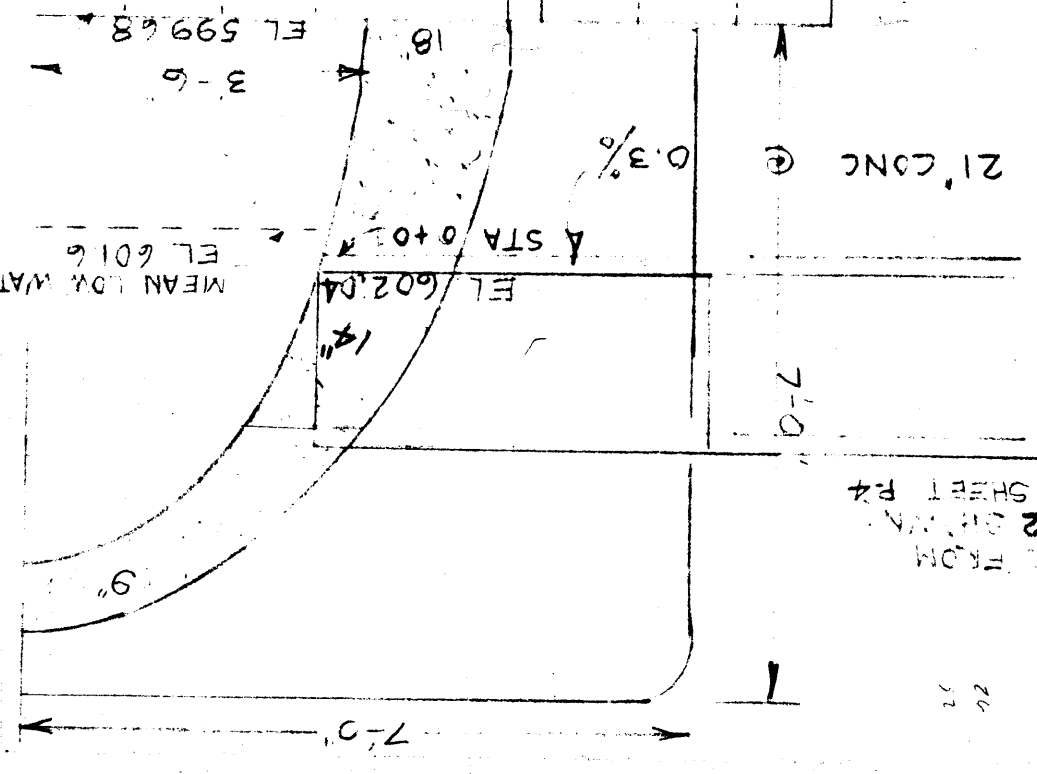
SCALE: 1" = 40'	DATE: 1-2-52	PROJECT: F. H. A. AIDED LOW RENT PUBLIC HOUSING PROJECT WISCONSIN NO. 12, SUPERIOR, WISCONSIN
DESIGNED BY: HANSEN & DOERFMAN ARCHITECTS	APPROVED BY: THOMAS M. BASTERASH CIVIL ENGINEER	DATE: 1-2-52
DESIGNED BY: HANSEN & DOERFMAN ARCHITECTS	APPROVED BY: CHARLES FOSTER MECH. ENGINEER	DATE: 1-2-52
DESIGNED BY: HANSEN & DOERFMAN ARCHITECTS	APPROVED BY: [Signature]	DATE: 1-2-52

As Bui. 14

- LEGEND
- EXISTING GAS MAIN
  - EXISTING WATER MAIN
  - WATER MAIN
  - EXISTING CONC. AND SEWER
  - STORM SEWER
  - SANITARY SEWER
  - SANITARY MAN HOLE
  - STORM MAN HOLE
  - CATCH BASIN
  - CURB INLET
  - VALVE
  - VALVE & C.I. VALVE BOX
  - GAS VALVE & C.I. VALVE BOX
  - HYDRANT

Note:  
 GAS & WATER VALVES  
 & C.I. VALVE BOXES  
 APPROXIMATELY 4'  
 FROM BUILDINGS

SECTION OF  
 17 TO E. N. 5TH ST.  
 OUTLET AT COLLECTOR  
 ON N. 5TH STREET  
 SCALE 1/2" = 1'



M.H. INV. 605.38  
 TOP RING 612.98

M.H. INV. 606.44  
 TOP RING 614.61

WATER MAIN 1912  
 55 PIPES / SQ. IN. HYD.