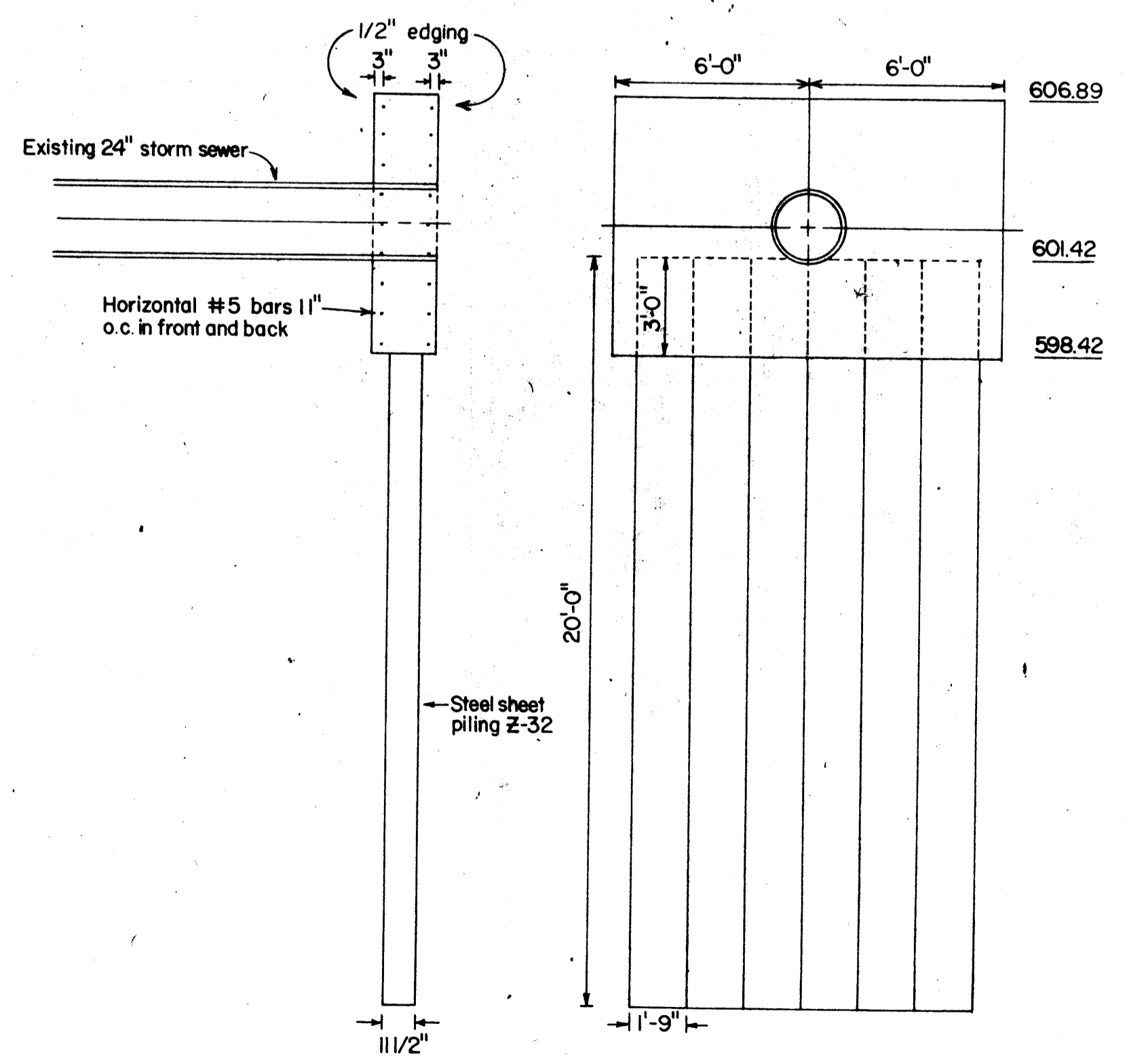
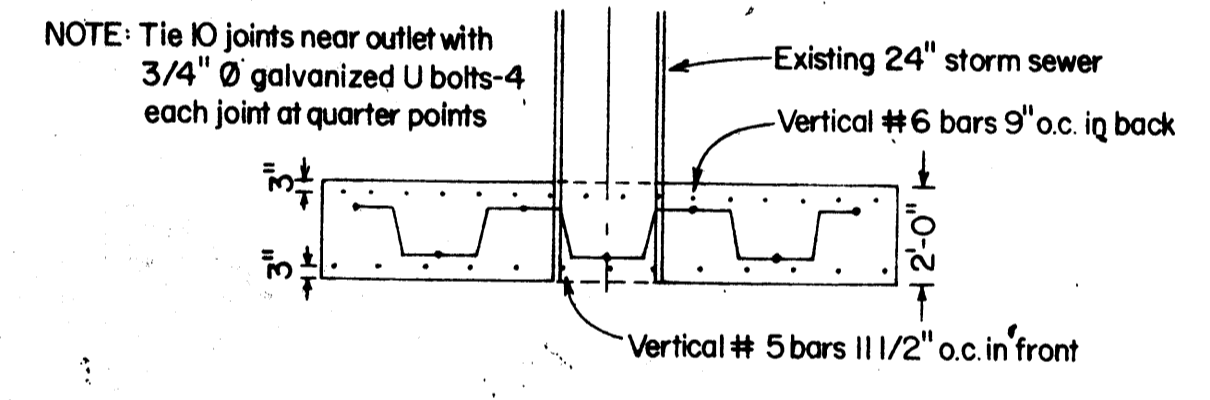


HIGHWAY LIGHT BASE
(AT N. 4th St. & ALLEY BETWEEN CLOUGH & WEEKS)

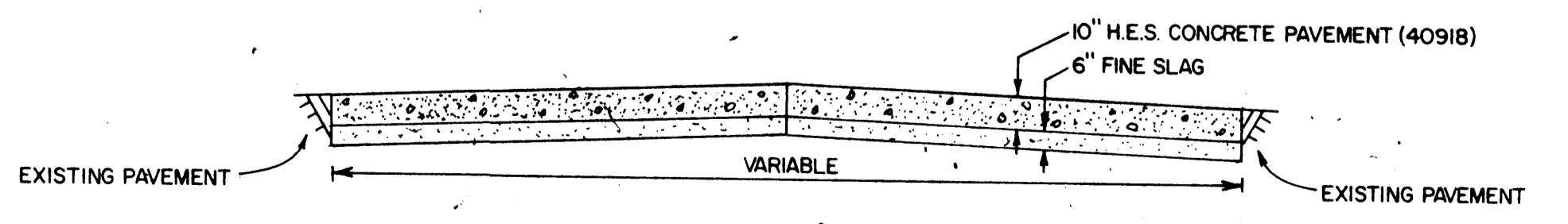
SEAL COAT						
Sheet No.	Street	From	To	Length	Width	
8	N. 4th	John 0+00	W. of John 5+85	185	40'	
18	N. 4th	John 0+00	E. of John 3+81	381	40'	
8	N. 5th	Hughitt 0+00	Banks 15+30	1,530'	40'	
10	N. 6th	Hughitt 0+00	Ogden 7+65	765'	40'	
10	N. 7th	Hughitt 0+00	@ Ogden 7+79	779'	24'	
10	N. 7th	@ Tower 10+95	@ Banks 10+05	310'	27'	
11	N. 8th	Hughitt 0+00	@ Ogden 7+23	723'	40'	
11	N. 8th	Hughitt 0+00	@ Hammond 4+15	415'	40'	
12	N. 7th	@ Hughitt 0+00	E. of Hughitt N. 3rd 3+50	350'	24'	
13	John Ave.	@ N. 4th 14+32	N. 3rd N. 2nd 6+22	420'	30'	
14	John Ave.	@ N. 1st 9+32	S. of N. 1st St. 2+00	310'	20'	
14	Tower	@ N. 1st 0+05	N. 8th St. 17+37	411'	32'	
15	Hughitt	S. W. 15+26	N. 8th St. 17+45	1,610'	20'	
16	Fisher	@ Fisher 1+35	@ Weeks 7+93	773'	40'	
17	N. 6th	@ Grand 0+20	@ Baxter 14+72	332'	40'	
18	N. 6th	@ Fisher 0+20	Clough Ave. 3+60	340'	21'	
12	N. 5th St.	Hughitt 0+00	Hammond Ave. 2+44	244'	40'	



NORTH TOWER SLIPOUTLET STRUCTURE

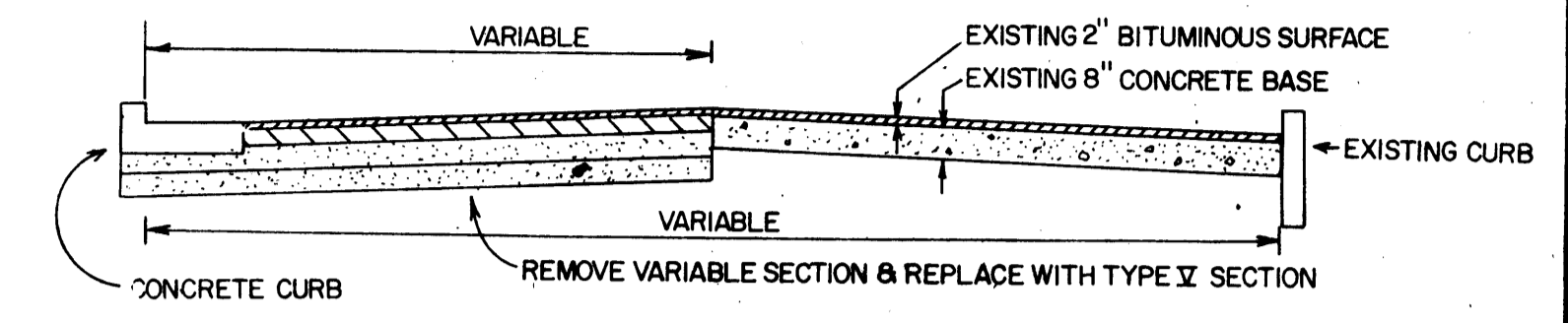
STREET RESTORATION - DISTRICT 1										
Sheet No.	Street	From	To	Length	Replacement Width	Replacement Section	Curb Type	Typical Street Restoration		
7	John	592' S N. 1st 5+92	906' S N. 1st 9+06	314'	24'	V	--	F		
7	John	1010' S N. 1st 10+10	1410' S N. 1st 14+10	400'	31'	V	C	C		
8	N. 4th St.	John 0+00	3+75	375'	18'	V	C	A		
8	N. 4th St.	John 0+00	175' W. John Tower 1+75	175'	11'	V	E	A		
8	N. 4th St.	Tower 8+65	7+25	--	--	--	E	--		
8	N. 4th St.	Tower 7+90	11+20	--	--	--	E	--		
8	N. 5th St.	7' E. Hughitt Tower 0+70	10+75	1,145'	Variable(9'-18')	V	E	B		
8	N. 5th St.	Tower 11+60	Banks 15+00	--	--	--	E	--		
9	Hughitt	N. 7th 12+75	N. 8th 17+42	467'	28'	V	--	D		
10	N. 6th St.	Hughitt 0+00	185' W. of Hughitt Tower 1+85	185'	10'	V	--	A		
10	N. 6th St.	Hughitt 1+85	Ogden 7+90	605'	10'	V	E	A		
10	N. 7th St.	Ogden 7+21	Tower 7+21	721'	Variable(25'-10')	V	E	D		
10	N. 7th St.	Ogden 7+40	Banks 9+25	185'	Variable(16'-26')	V	--	G		
10	N. 7th St.	Tower 11+55	14+90	--	--	--	C	--		
11	N. 8th St.	Hughitt 0+00	555' W. of Hughitt 5+55	555'	11'	V	E	D		
11	N. 8th St.	Hughitt 0+00	Hammond 3+50	350'	10'	V	E	D		
11	N. 6th St.	Hughitt 0+00	360' E. of Hughitt 3+60	--	--	--	E	--		
12	N. 7th St.	Hammond 0+00	3+50	3+50	Variable(10'-23')	V	C	D		
12	N. 8th St.	N. 8th St. 0+10	165' S. of N. 8th St. 1+65	155'	8'	V	--	F		
14	N. 1st St.	Ogden 0+00	195' E. of Ogden 1+95	195'	7'	V	--	F		
14	Ogden	N. 1st St. 0+15	185' S. of N. 1st St. 0+15	170'	12'	VI	--	A		
15	Grand	0+30	8+60	190'	--	--	E	A		
16	of N. 4th St.	14+85	14+85	165'	10'	I	--	F		
16	Serv. Rd. of N. 4th St.	175' W. of Clough 1+75	550' W. of Clough 5+50	375'	14'	I	--	F		
17	Fisher	133' W. of N. 5th St. 1+32	N. 5th St. 4+32	300'	20'	III	--	F		
17	Fisher	N. 5th St. 4+90	N. 8th St. 17+11	1,221'	Plate 5-S1	Plate 5-S1	Plate 5-S1	F		
18	N. 6th St.	20' W. of Fisher 0+20	Clough 3+78	358'	16'	III	E	F		
18	N. 6th St.	Clough 3+78	7' E. W. of Weeks 7+43	365'	12'	--	E	--		
18	N. 6th St.	Grand 11+63	Baxter 14+94	331'	16'	III	E	F		
18	N. 6th St.	Baxter 14+94	30' W. of Baxter 15+24	30'	13'	--	E	--		
18	N. 5th St.	Fisher 0+00	170' W. of Fisher 1+70	--	--	--	E	--		
20	N. 8th St.	Fisher 0+30	170' W. of Fisher 1+70	--	--	--	E	--		
20	N. 8th St.	180' S. of Baxter 1+80	195' E. of Baxter 1+95	--	--	--	E	G		

PAVEMENT REPLACEMENT FOR N. 3rd ST. & N. 4th ST. CROSSINGS

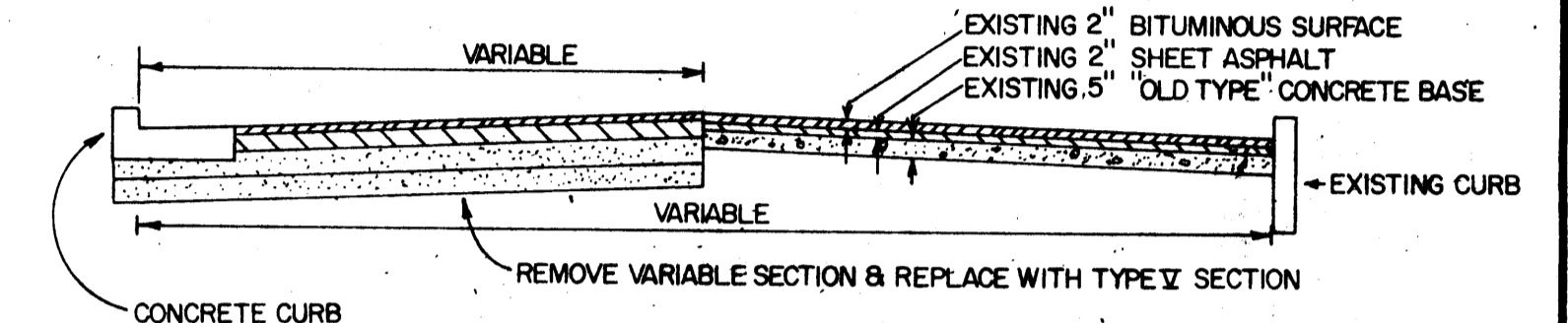


TYPICAL STREET RESTORATION SECTIONS

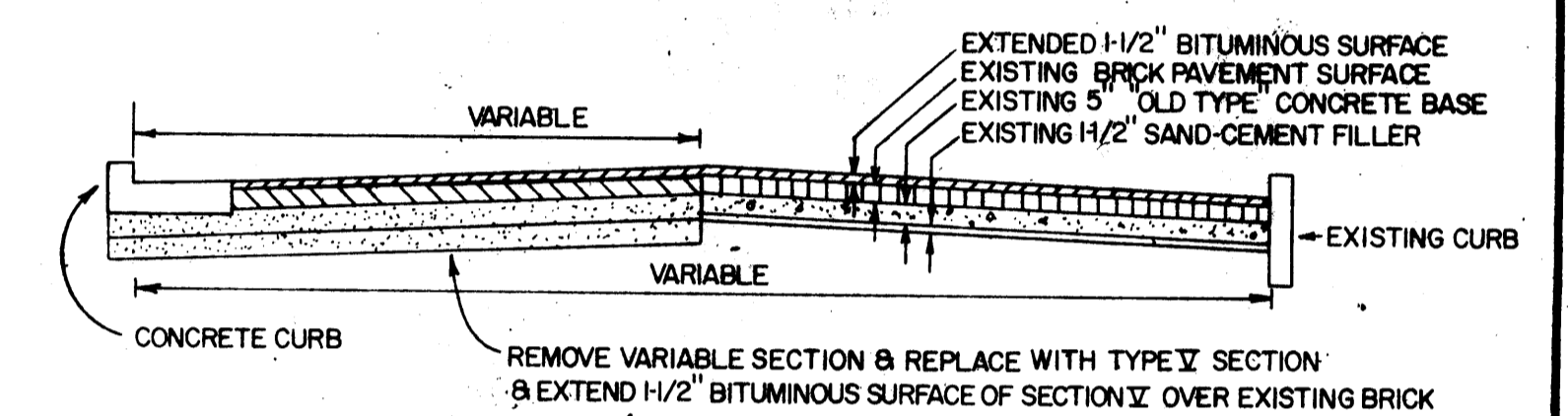
Scale: 1/4" = 1'-0"



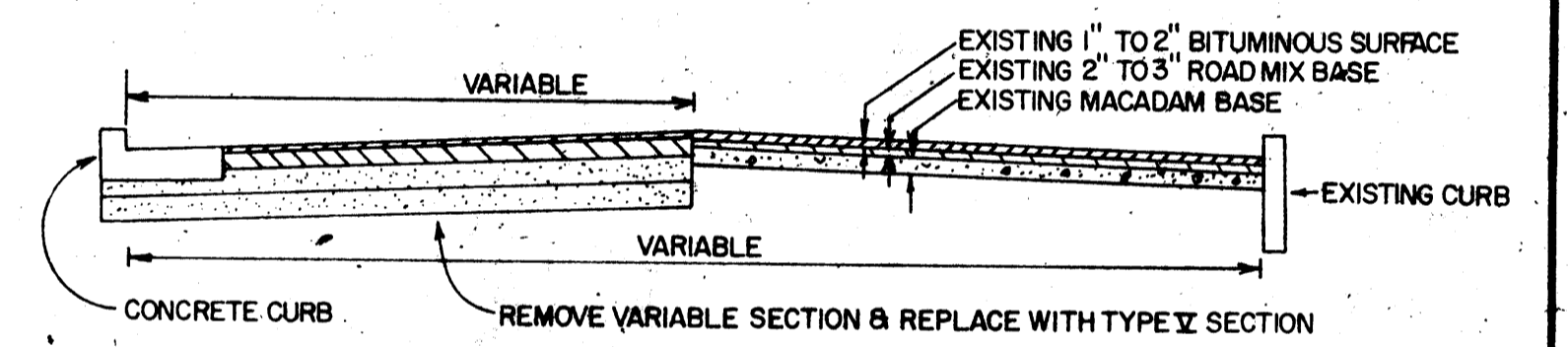
TYPICAL STREET RESTORATION SECTION, TYPE A



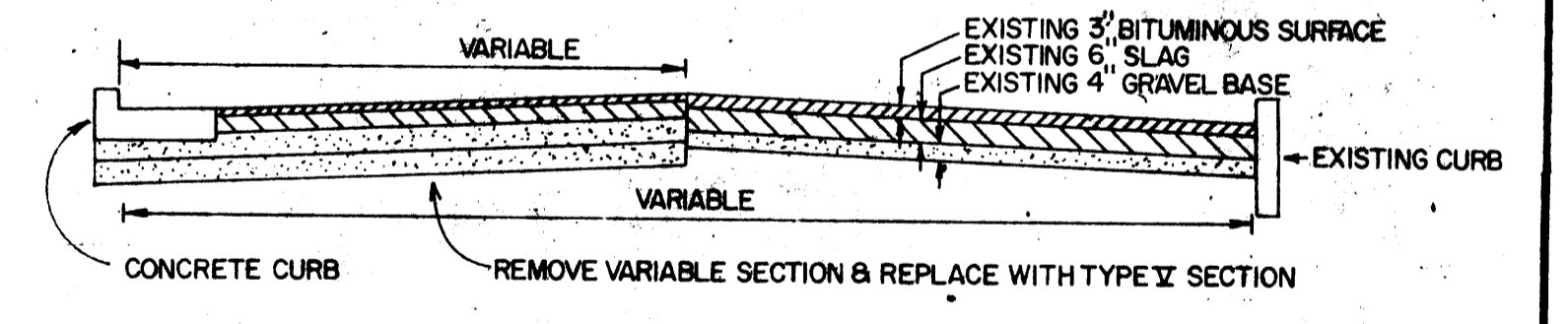
TYPICAL STREET RESTORATION SECTION, TYPE B



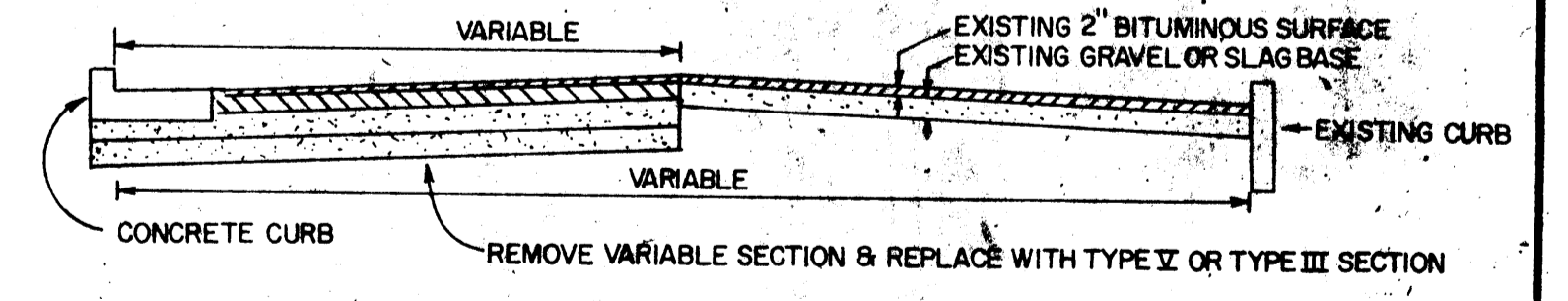
TYPICAL STREET RESTORATION SECTION, TYPE C



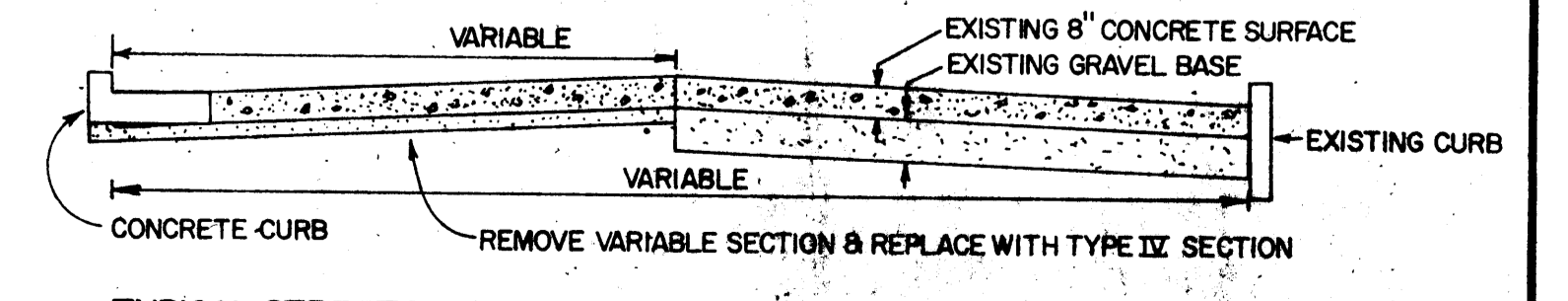
TYPICAL STREET RESTORATION SECTION, TYPE D



TYPICAL STREET RESTORATION SECTION, TYPE E



TYPICAL STREET RESTORATION SECTION, TYPE F



TYPICAL STREET RESTORATION SECTION, TYPE G