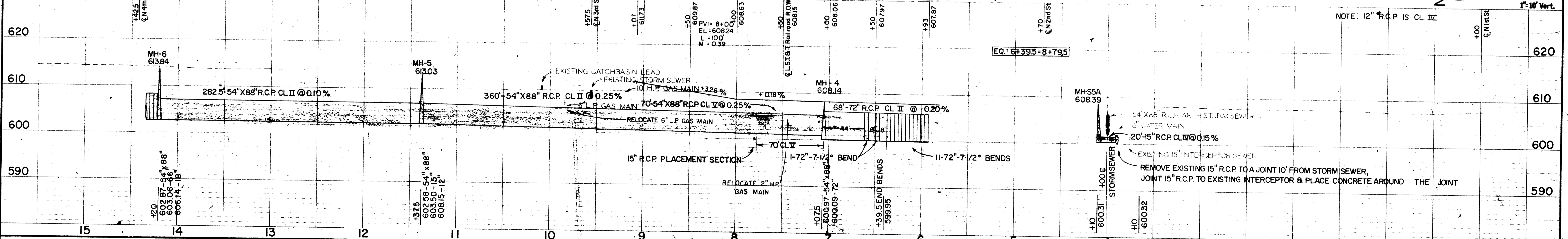
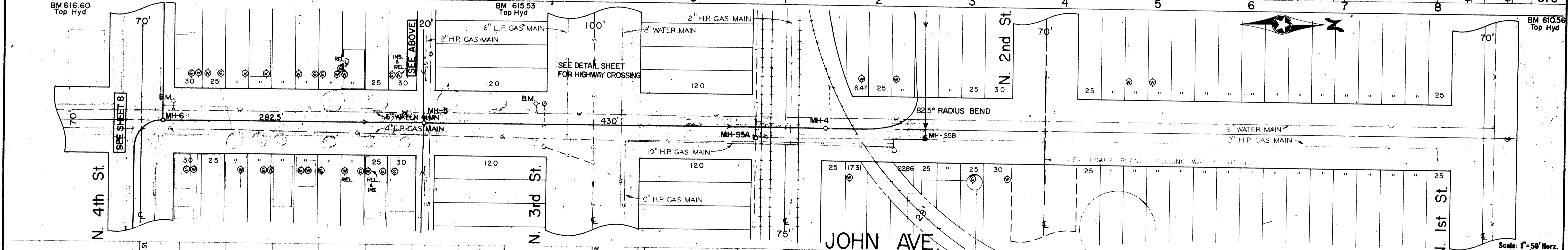
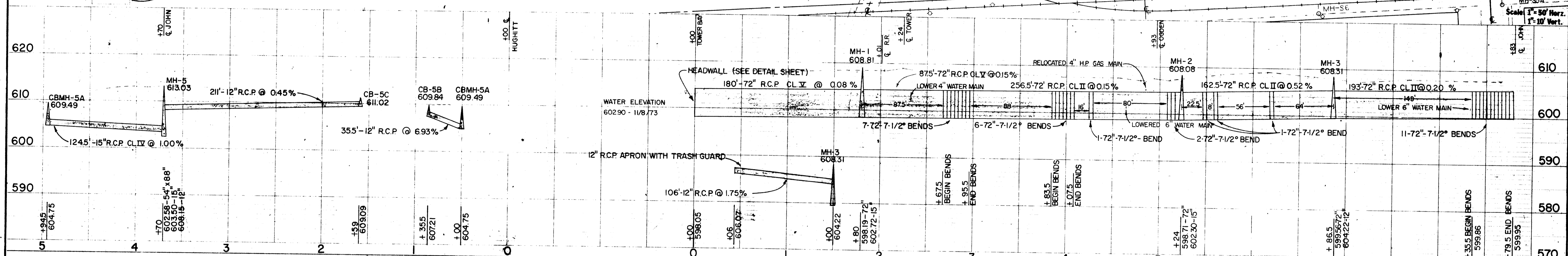
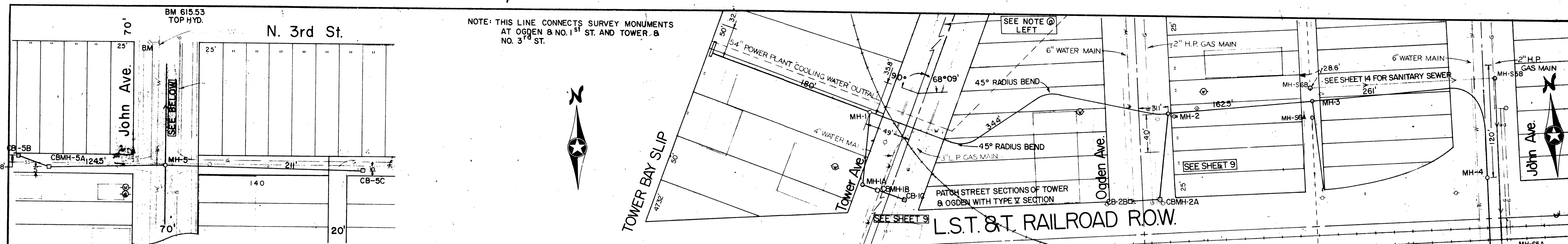


NOTE: THIS LINE CONNECTS SURVEY MONUMENTS AT OGDEN & NO. 1<sup>ST</sup> ST. AND TOWER & NO. 3<sup>RD</sup> ST.



<small>1. I HEREBY CERTIFY THAT THIS PLAN WAS PREPARED BY ME OR UNDER MY DIRECT SUPERVISION AND THAT I AM A LICENSED PROFESSIONAL ENGINEER IN THE STATE OF WISCONSIN.</small> <small>DATE AUG. 22, 1974 REG. NO. 506399</small>		<small>SURVEY</small> 10 <small>DRAWN</small> 69 <small>DESIGNED</small> JB <small>APPROVED</small> HBR	<small>REVISIONS</small> <small>RECORD PLANS</small> 12/29/78 <small>DATE</small> HBR	<b>RONESTROD, ROSENE, ANDERLIK &amp; ASSOC., INC.</b> <small>ST. PAUL, MINNESOTA</small>	<b>SUPERIOR, WISCONSIN</b> <small>DATE: JULY 22, 1974 COMM. 6888 G</small>	<b>DISTRICT I - WATER FRONT</b> <small>7/21</small>
--	--	--	---	---	---	--

L.S.T. & T. RAILROAD ROW. JOHN AVE.