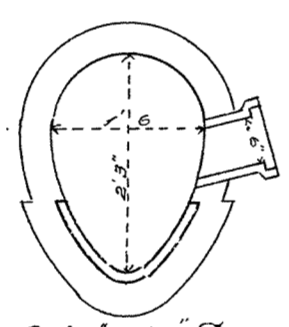


CITY OF SUPERIOR

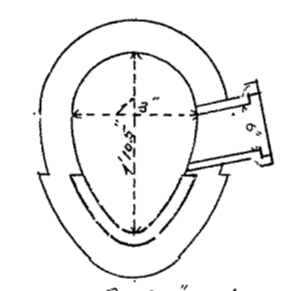
SEWER PLAN

Contract let June 13, 1890
 completed Aug. 11, 1891
 D. C. Sullivan, Contractor
 W. R. Russell & M. Conroy, Inspectors.
 E. B. Banks, City Engineer.

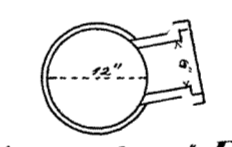
Scale { Horizontal 1 inch = 60 ft.
 Vertical 1 " = 4 "
 Sectional 1 " = 2 "



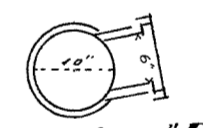
Section of 16x23 Sewer



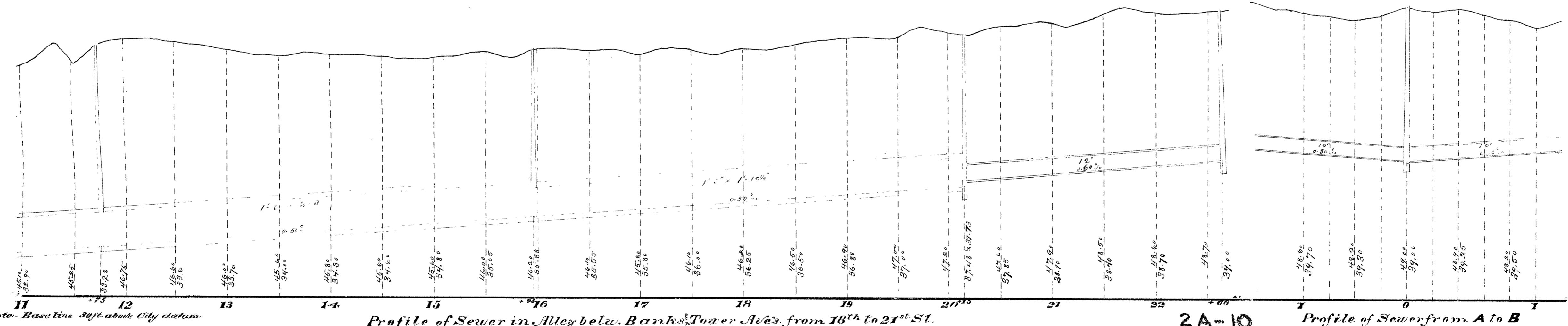
Section of 13x110 1/2 Sewer



Section of 12' Pipe



Section of 10' Pipe



Note: Base line 30ft. above City datum

Profile of Sewer in Alley below Banks Tower Aves. from 18th to 21st St.

2A-10

Profile of Sewer from A to B