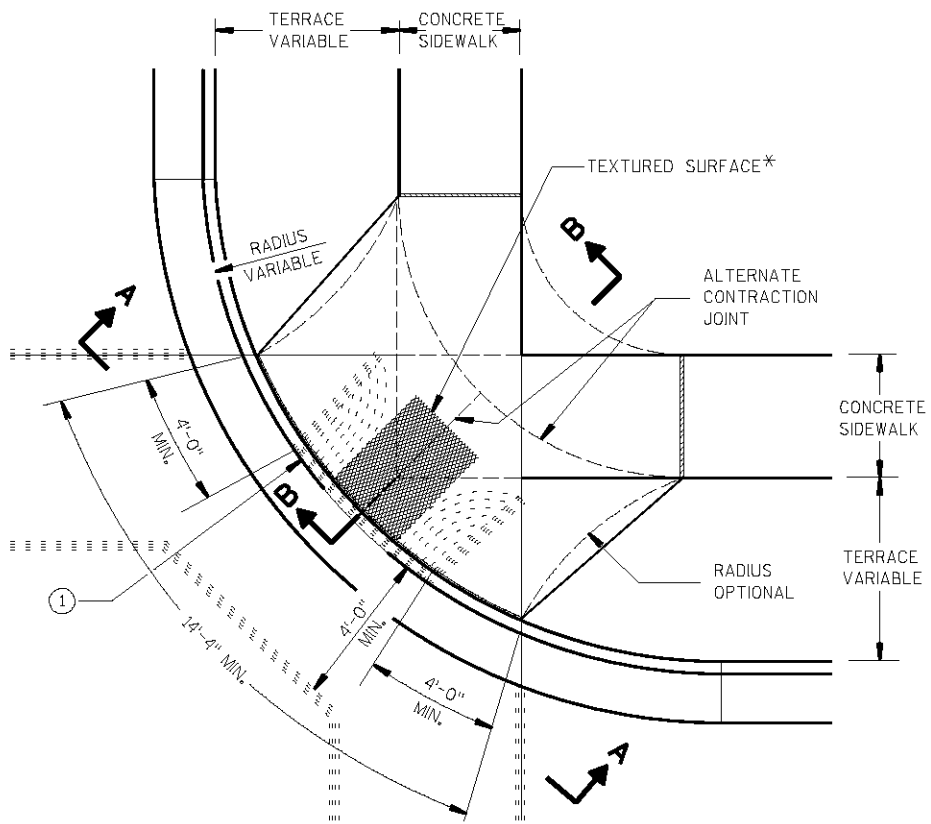
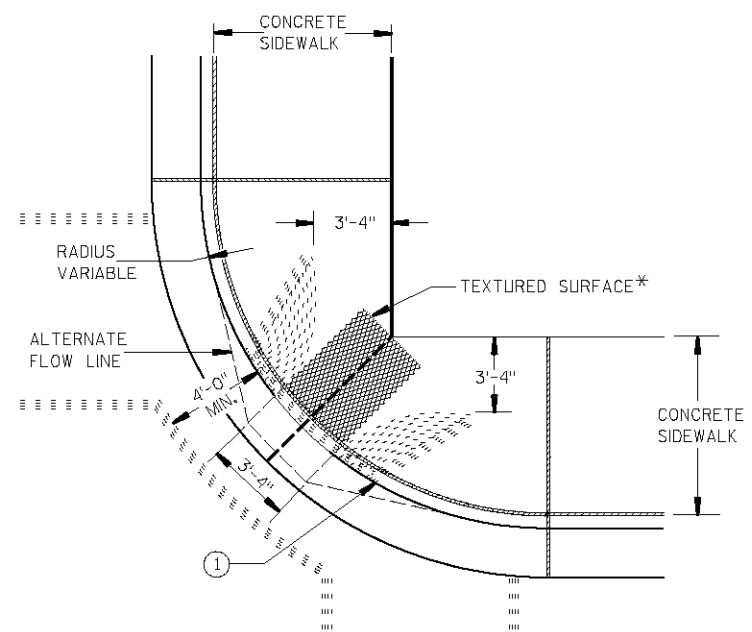


LEVELS ON = 1,2,3,4,5,6,7,8,9,10,11,12,13,14,15,16,17,18,19,20,21,22,23,24,25,26,27,28,29,30,31,32,33,34,35,36,37,38,39,40,41,42,43,44,45,46,47,48,49,50,51,52,53,54,55,56,57,58,59,60,61,62,63

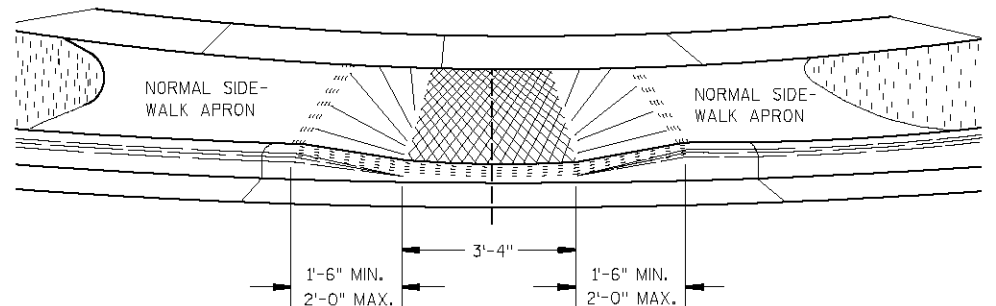


**PLAN VIEW  
TYPE 1 RAMP**  
(CENTER OF CORNER RADIUS)

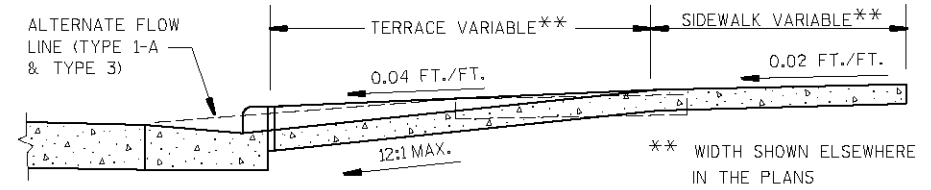
1/2" ——— EXPANSION JOINT-SIDEWALK  
 - - - - - CONTRACTION JOINT  
 LOCATION OF JOINTS MAY BE VARIED FROM THOSE SHOWN TO BETTER FIT SITE CONDITIONS AND/OR LOCAL GOVERNMENT PREFERENCE.



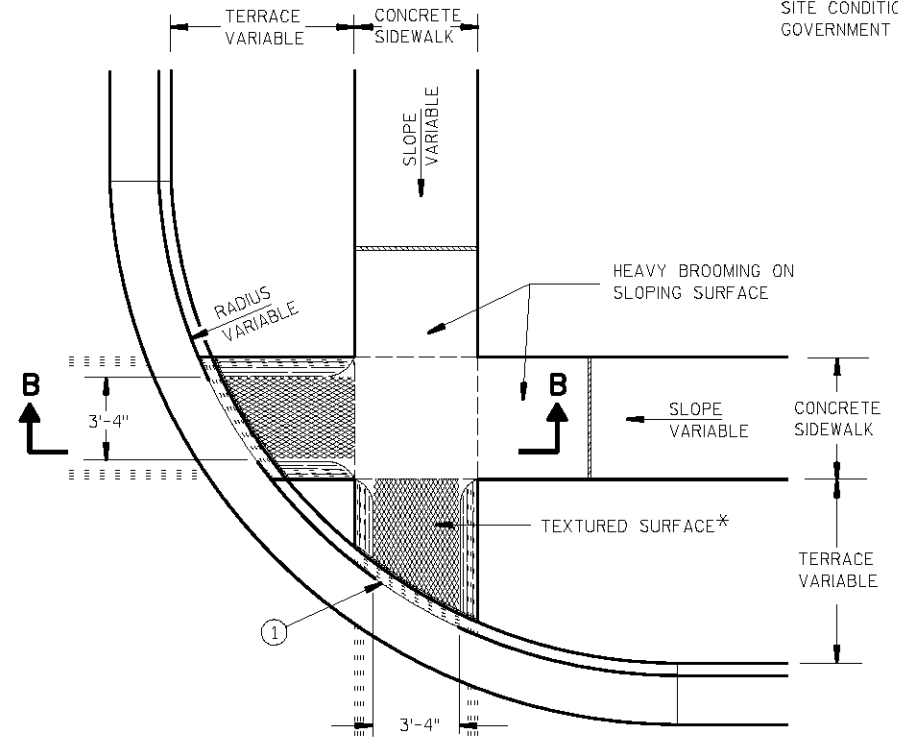
**PLAN VIEW  
TYPE 1-A RAMP**  
(NO TERRACE)



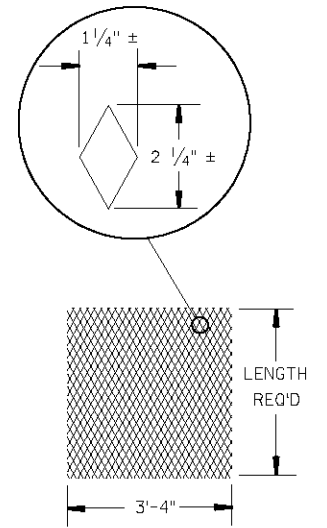
**VIEW A-A**



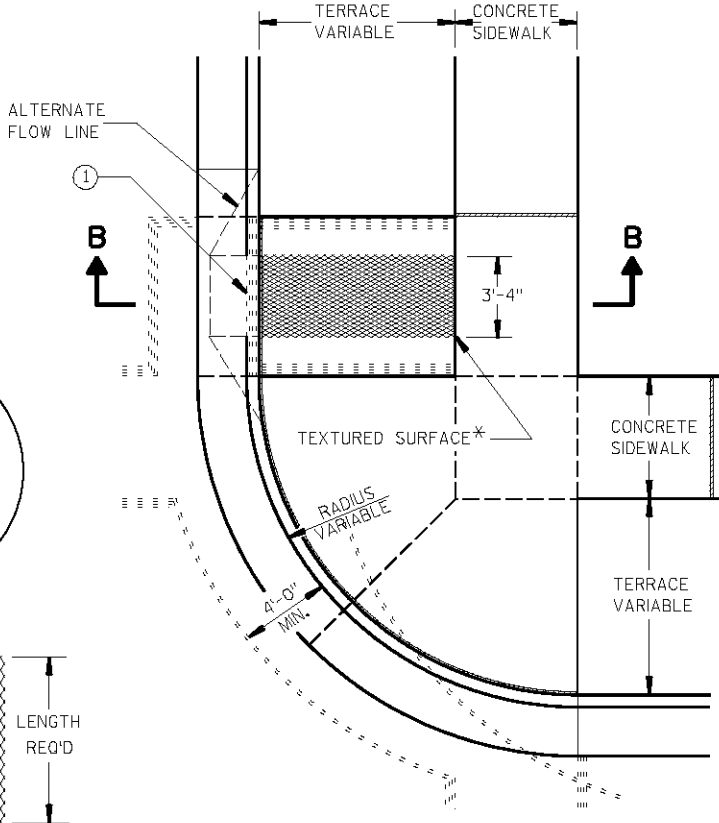
**SECTION B-B**



**PLAN VIEW  
TYPE 2 RAMP**  
(ON LINE WITH SIDEWALK)



**DETAIL OF DIAMOND PATTERN\***



**PLAN VIEW  
TYPE 3 RAMP**  
(OUTSIDE OF CROSSWALK AREA)

**GENERAL NOTES**

- DETAILS OF CONSTRUCTION, MATERIALS AND WORKMANSHIP NOT SHOWN ON THIS DRAWING SHALL CONFORM TO THE PERTINENT REQUIREMENTS OF THE STANDARD SPECIFICATIONS AND THE APPLICABLE SPECIAL PROVISIONS.
- RAMPS SHALL BE BUILT AT 12:1 OR FLATTER. WHEN NECESSARY, THE SIDEWALK ELEVATION MAY BE LOWERED TO MEET THE HIGH POINT ON THE RAMP.
- TYPE 1 OR TYPE 1-A RAMPS SHALL HAVE A NORMAL SIDEWALK APRON AND CURB ON BOTH SIDES OF RAMP.
- CURB RAMPS SHALL BE MEASURED AND PAID FOR AS CONCRETE SIDEWALK AND CONCRETE CURB AND GUTTER.
- SURFACE TEXTURING SHALL CONSIST OF LINEAR IMPRESSIONS APPROXIMATELY 1/4 INCH TO 3/8 INCH IN DEPTH AND WIDTH, ORIENTED TO PROVIDE A UNIFORM PATTERN OF DIAMOND SHAPES MEASURING APPROXIMATELY 1 1/4 INCHES IN WIDTH BY 2 1/4 INCHES IN LENGTH, WITH THE LENGTH BEING PARALLEL TO THE DIRECTION OF PEDESTRIAN MOVEMENT. THIS SURFACE TEXTURE MAY BE ACHIEVED BY IMPRESSING AND REMOVING A PIECE OF EXPANDED METAL REGULAR INDUSTRIAL MESH INTO THE SURFACE OF THE RAMP WHILE THE CONCRETE IS IN A PLASTIC STATE.
- ① THE RAMP SHALL BE BORDERED ON BOTH SIDES AND ON THE CURB LINE WITH A 4 INCH WIDE YELLOW PAINT STRIPE OR WITH BRICK OF A CONTRASTING COLOR. NORMALLY THE PAINT STRIPE ALTERNATE WILL BE USED. THE MUNICIPALITY OR THE DEPARTMENT WILL APPLY THIS STRIPING UNLESS OTHERWISE SPECIFIED IN THE CONTRACT.
- IF A MUNICIPALITY REQUIRES THE BRICK ALTERNATE, SPECIAL DETAILS AND PROVISIONS ARE SHOWN ELSEWHERE IN THE PLANS.