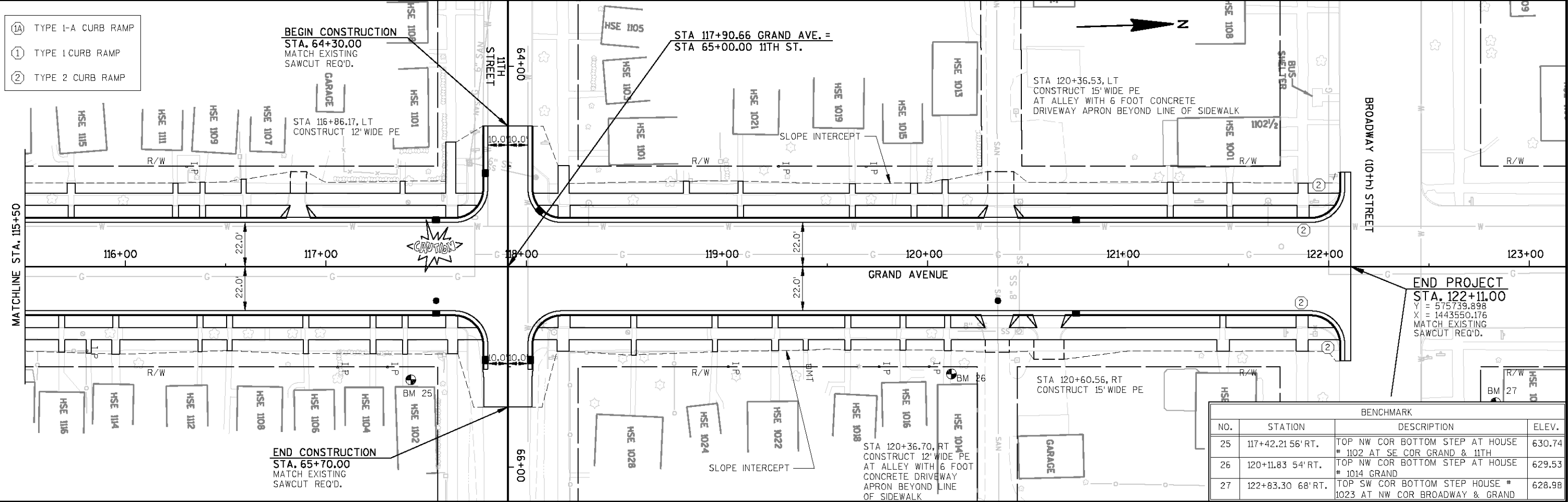


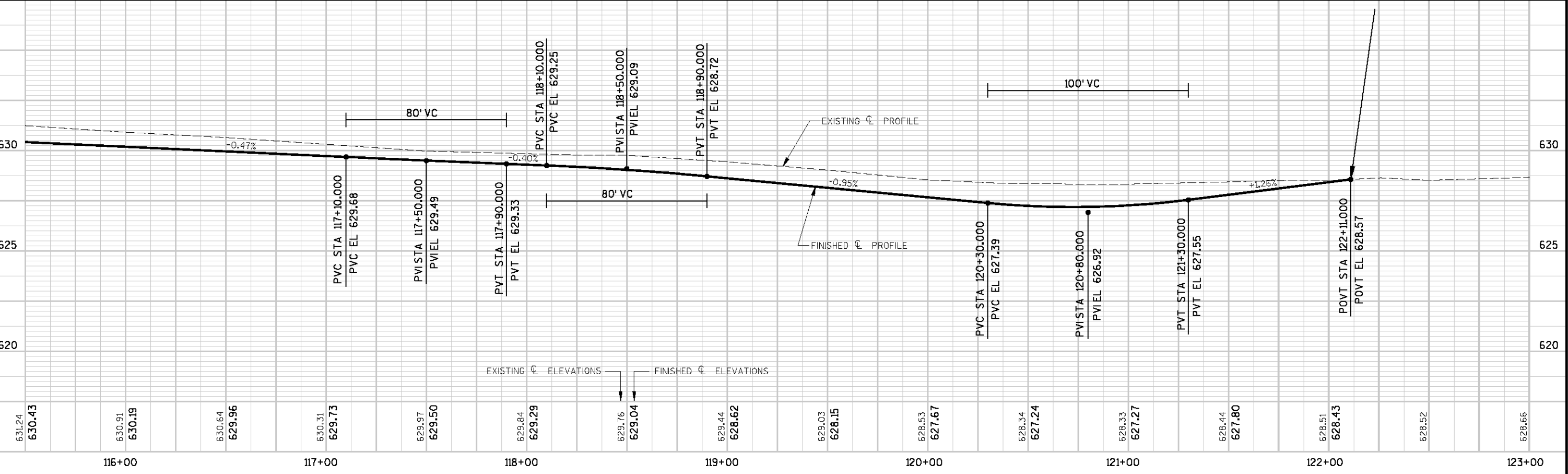
LEVELS ON = 1,2,3,4,5,6,7,8,9,10,11,12,13,14,15,16,17,18,19,20,21,22,23,24,25,26,27,28,29,30,31,32,33,34,35,36,37,38,39,40,41,42,43,44,45,46,47,48,49,50,51,52,53,54,55,56,57,58,59,60,61,62,63

- (1A) TYPE 1-A CURB RAMP
- (1) TYPE 1 CURB RAMP
- (2) TYPE 2 CURB RAMP



END PROJECT
 STA. 122+11.00
 Y = 575739.898
 X = 1443550.176
 MATCH EXISTING
 SAWCUT REQ'D.

BENCHMARK			
NO.	STATION	DESCRIPTION	ELEV.
25	117+42.21 56' RT.	TOP NW COR BOTTOM STEP AT HOUSE # 1102 AT SE COR GRAND & 11TH	630.74
26	120+11.83 54' RT.	TOP NW COR BOTTOM STEP AT HOUSE # 1014 GRAND	629.53
27	122+83.30 68' RT.	TOP SW COR BOTTOM STEP HOUSE # 1023 AT NW COR BROADWAY & GRAND	628.98



SEH PROJECT NUMBER: SUPER0005.00 HWY: GRAND AVENUE COUNTY: DOUGLAS PLAN & PROFILE SCALE, FEET 0 25 50 SHEET NO: E