

THE GOVERNING SPECIFICATION SHALL BE THE STANDARD SPECIFICATIONS FOR SEWER & WATER CONSTRUCTION IN WISCONSIN, 5th EDITION, MARCH 1 1988 AND ADDENDUM NO. 1, 1992.

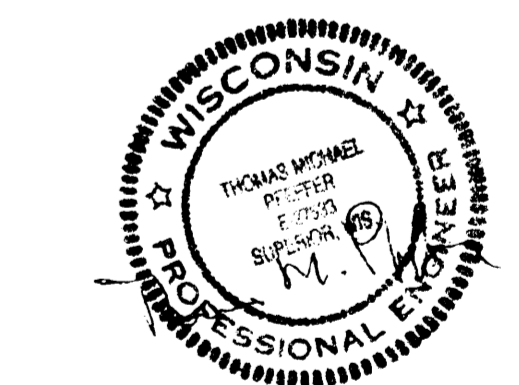
EXCEPTIONS:

- SECTION 6.48.1 SHALL BE REVISED SO THAT MANHOLE FRAMES AND COVERS SHALL BE NEENAH TYPE R-1534 OR CITY OF SUPERIOR APPROVED EQUAL.

SUPPLEMENTS:

- EROSION CONTROL WORK SHALL BE IN ACCORDANCE WITH SECTION 628 OF THE STATE OF WISCONSIN, DEPARTMENT OF TRANSPORTATION STANDARD SPECIFICATIONS FOR ROAD AND BRIDGE CONSTRUCTION, 1989 EDITION.

REVISION
STAMP



DRAWING TITLE:
HABITAT SANITARY
SEWER EXTENSION

DATE: JUNE 9, 1992

DRAWN BY: LAR

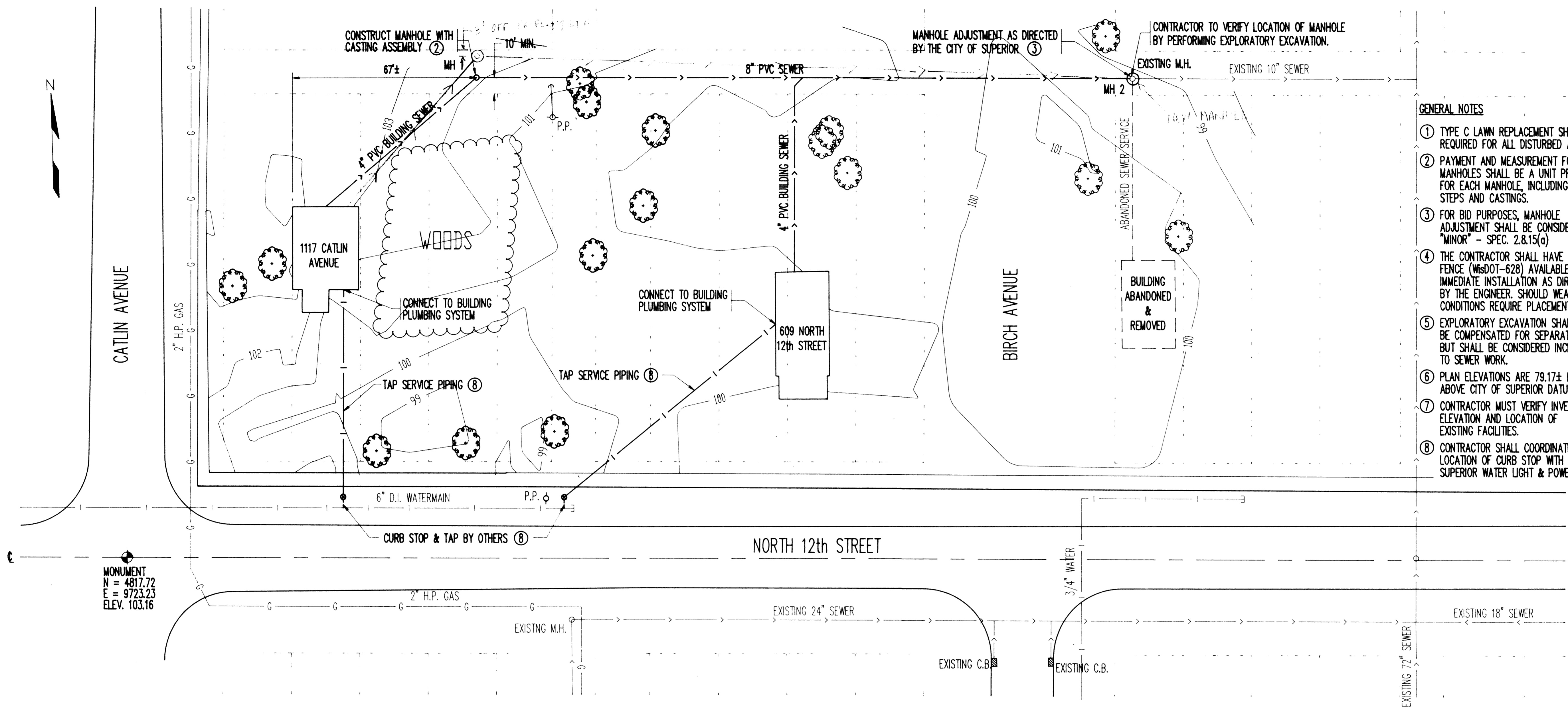
CHECKED BY:

CADD FILE:

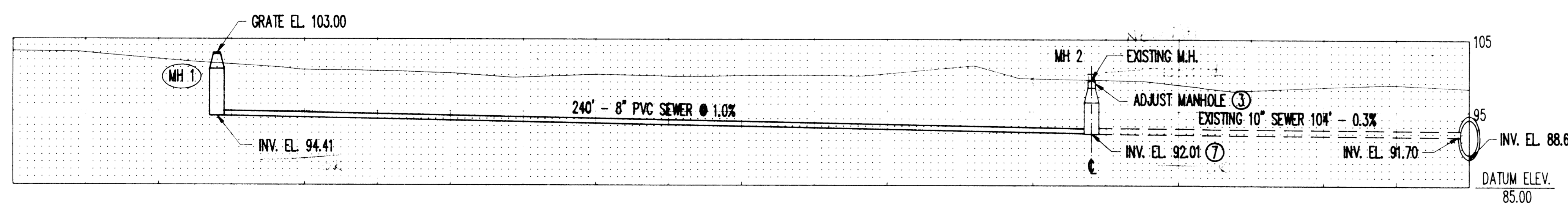
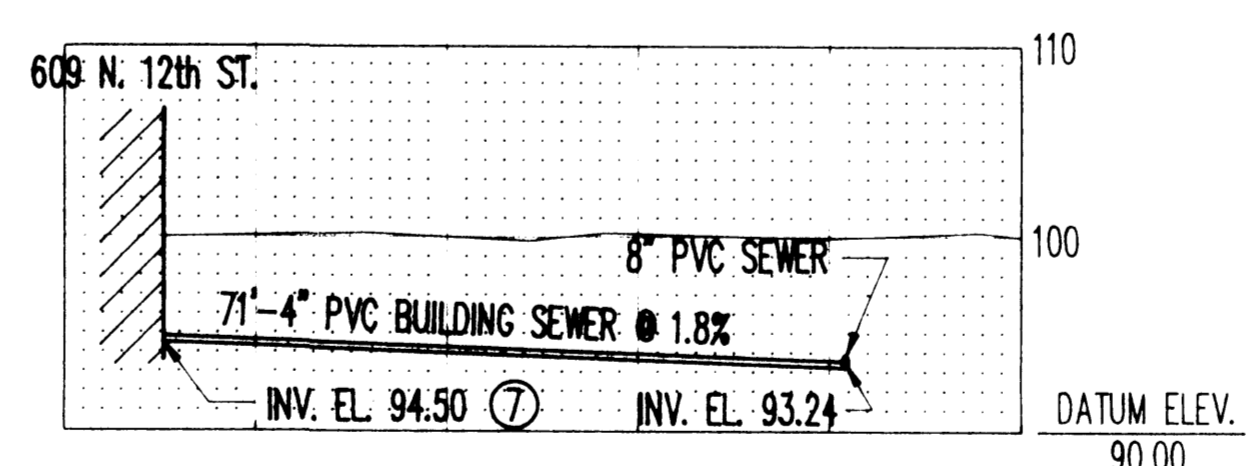
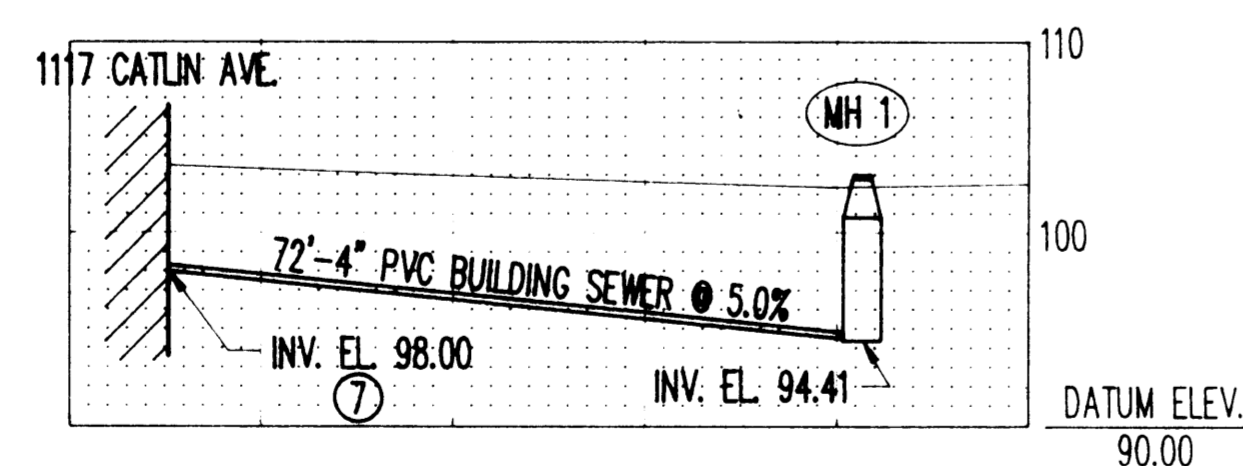
SCALE: 1"=20'-0"

PROJECT NO: 92016.3

DRAWING NO: **C1**



PLAN
SCALE: 1"=20'



PROFILES
SCALE: HORIZONTAL = 1"=20'
VERTICAL = 1"=10'

ESTIMATE OF QUANTITIES		
ITEM	UNIT	QUANTITY
8" PVC SEWER	LIN. FT.	240
4" PVC BUILDING SEWER	LIN. FT.	143
MANHOLE W/CASTING ASSEMBLY	LIN. FT.	8.59
LAWN REPLACEMENT, TYPE C	SQ. YD.	194
ADJUST MANHOLE	LIN. FT.	1
TAP SERVICE PIPING	LIN. FT.	183

CONTACTS:
CITY OF SUPERIOR - PUBLIC WORKS DEPARTMENT
1-715-394-0333
DIGGERS HOTLINE
1-800-242-8511
SUPERIOR WATER LIGHT & POWER - GENERAL INFO.
1-715-394-2200