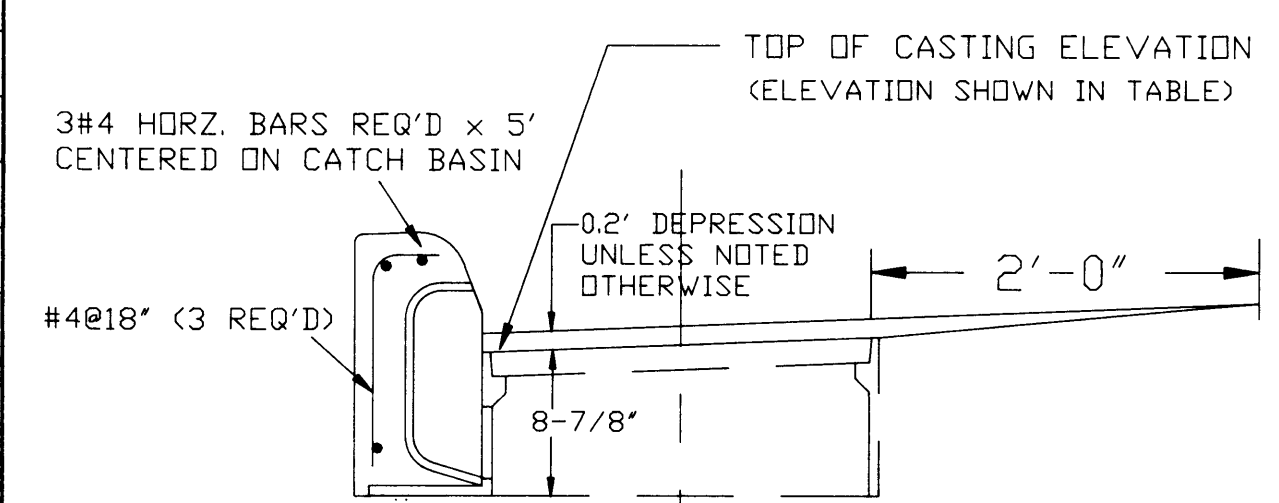
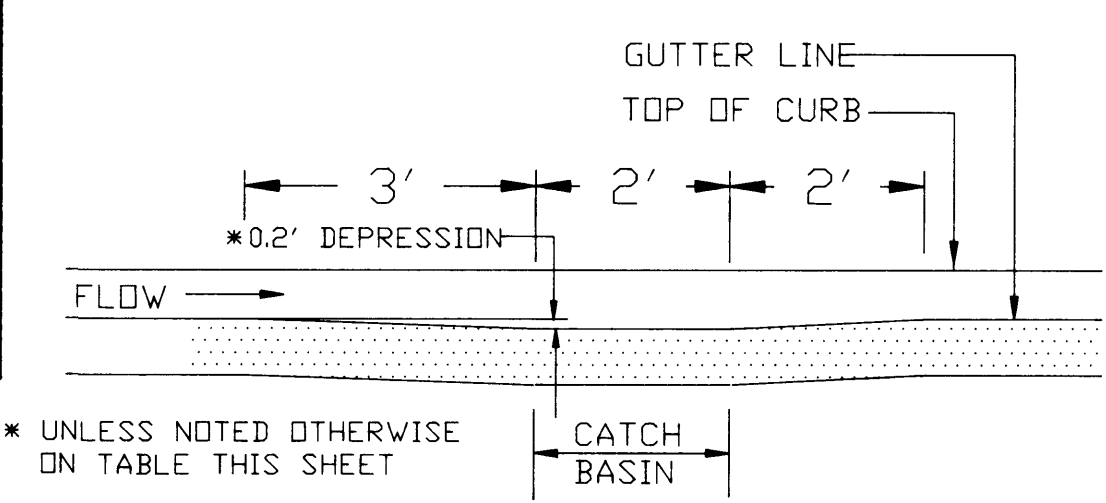


STATION	EXISTING	F&I SEWER PIPE								STRUCT. INSIDE DIA.	SHEET REF.	REMARKS	
		LIN. FEET											
		10"	12"	15"	18"	24"	30"	36"	42"				48"
										450	11	EXISTING	
	623.40												
	632.75	635.40	625.02							418	84"	11	TYPE "C" GRATE
	635.75	637.40	626.53							420	84"	12	TYPE "C" GRATE
	637.65	639.30	628.04							420	84"	13	TYPE "C" GRATE
	639.35	641.00	629.55							357	84"	14	TYPE "C" GRATE
	641.16	642.70	630.76			56				221	72"	15	TYPE "C" GRATE
6B	641.10	642.75	630.98		28	149					48"	15	TYPE "J" COVER
6C	638.85	640.50	631.61			35					48"	15	TYPE "J" COVER
8	639.85	641.50	631.75		20						48"	15	TYPE "J" COVER
8-1	642.65	644.30	631.63			10	32			109	72"	15	TYPE "J" COVER
8-2	640.85	642.50	632.72			44	304				48"	6	TYPE "J" COVER
8-3	641.75	642.20	634.00			36	107				48"	6	TYPE "J" COVER
8-4	639.2	640.20	636.00		48						48"	6	A1 GRATE
8-5	639.3	640.30	636.20								48"	6	A1 GRATE
8-6	640.30	641.33	636.20			35					48"	6	A-LT GRATE
9	640.00	641.09	639.30		36(1)						72"	16	RELOCATED GRATE
10	643.0	644.00	632.02			10		289			72"	16	TYPE "J" COVER
	642.0	643.3±	633.06		10(2)	10		70			72"	16	TYPE "J" COVER
	643.0	644.0±	629.95								72"	16	R-1780A COVER
	631.80	633.40	621.80		275						48"	11	R-1780A COVER

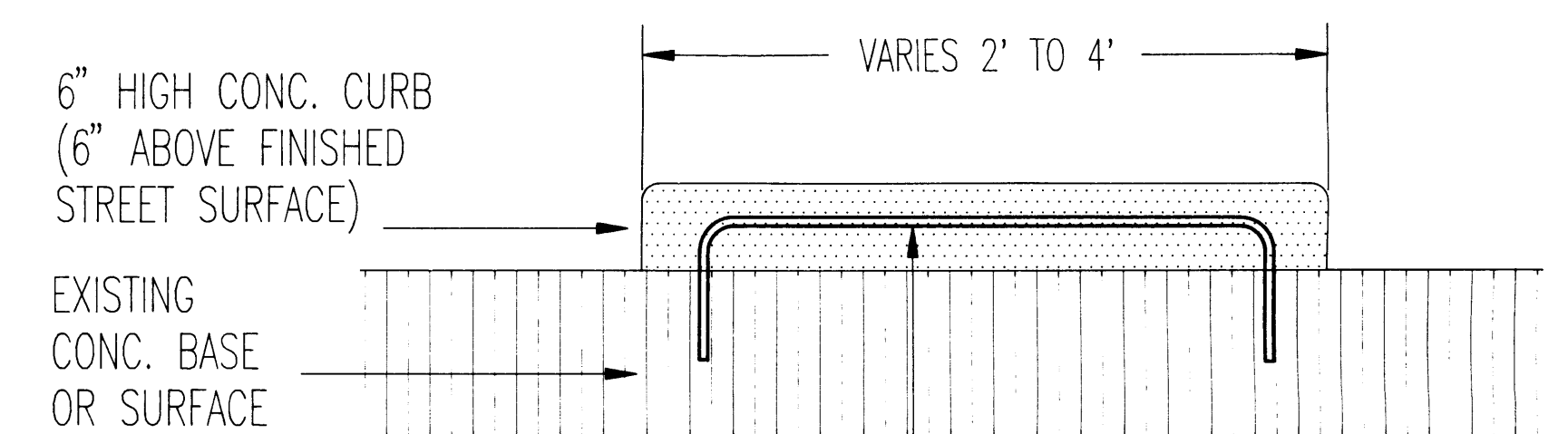
(1) 36 LF 10" DUCTILE IRON PIPE
(2) PVC PIPE



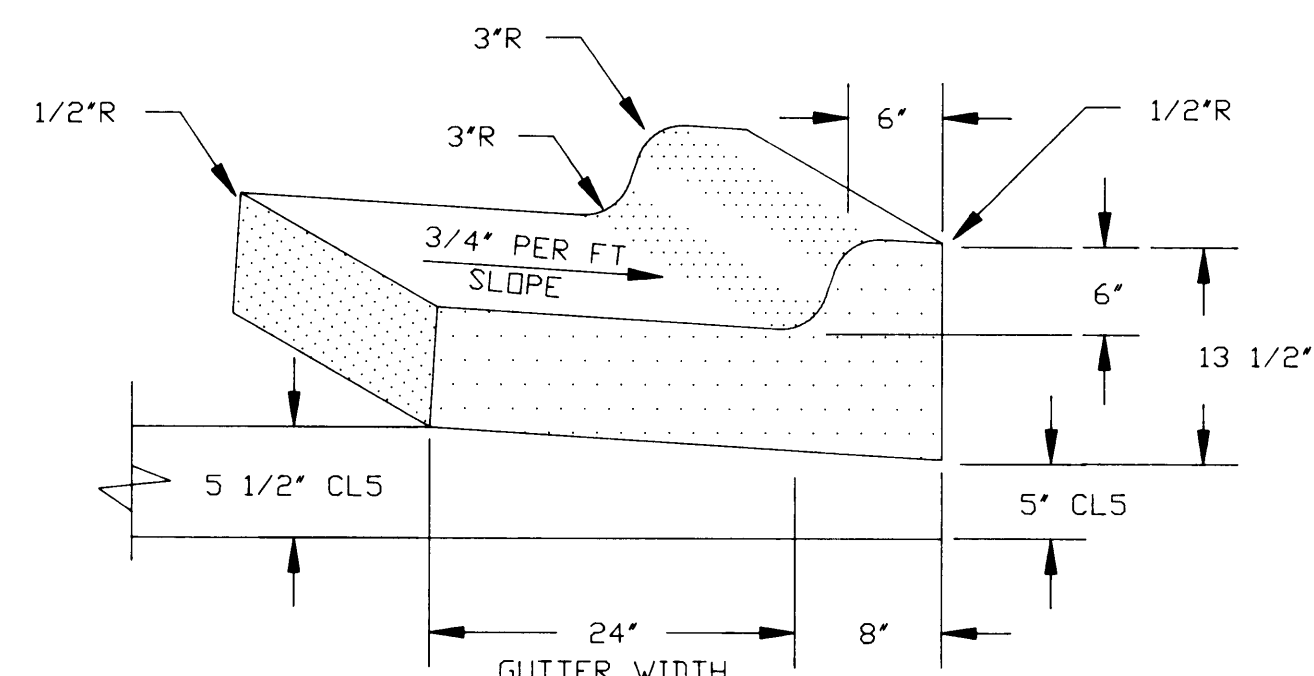
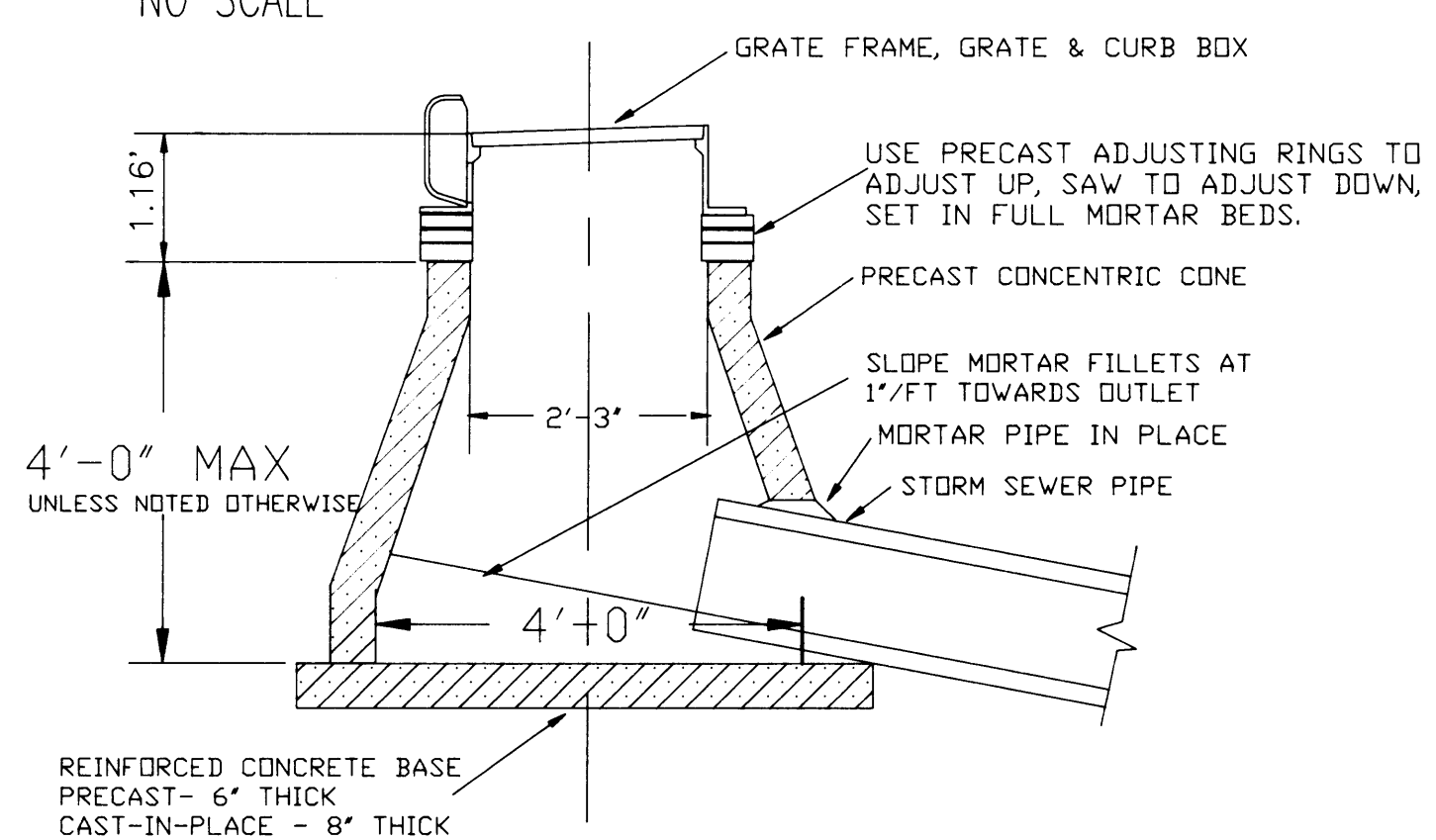
REINFORCING AT CATCH BASIN



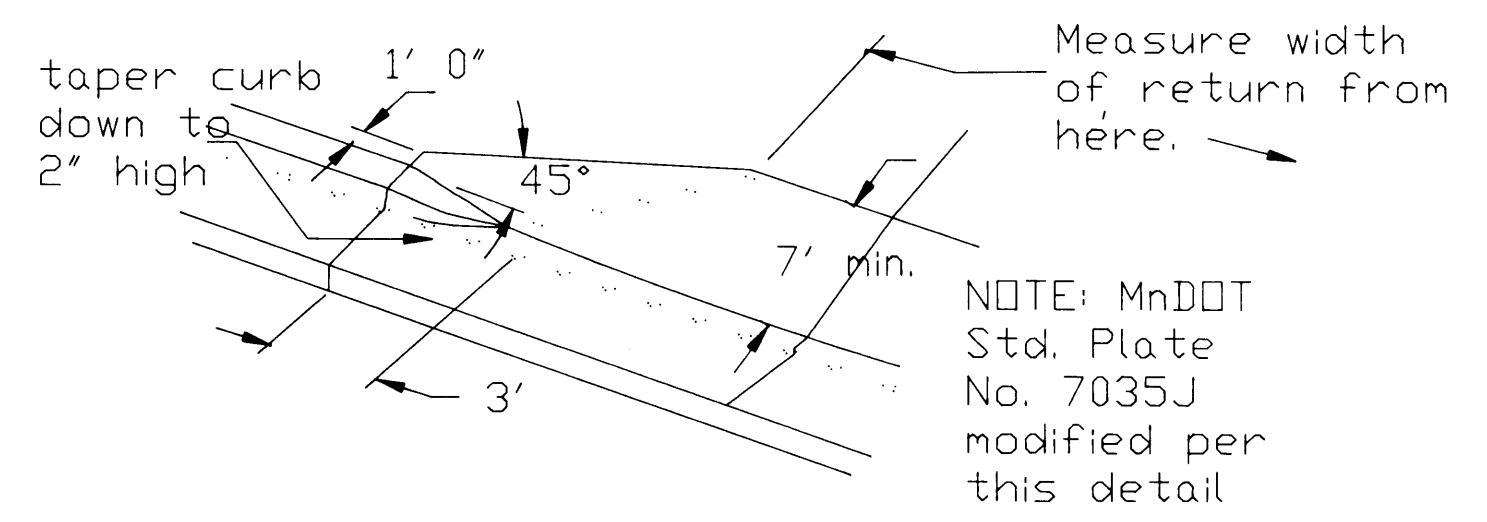
* UNLESS NOTED OTHERWISE ON TABLE THIS SHEET



MEDIAN DETAIL



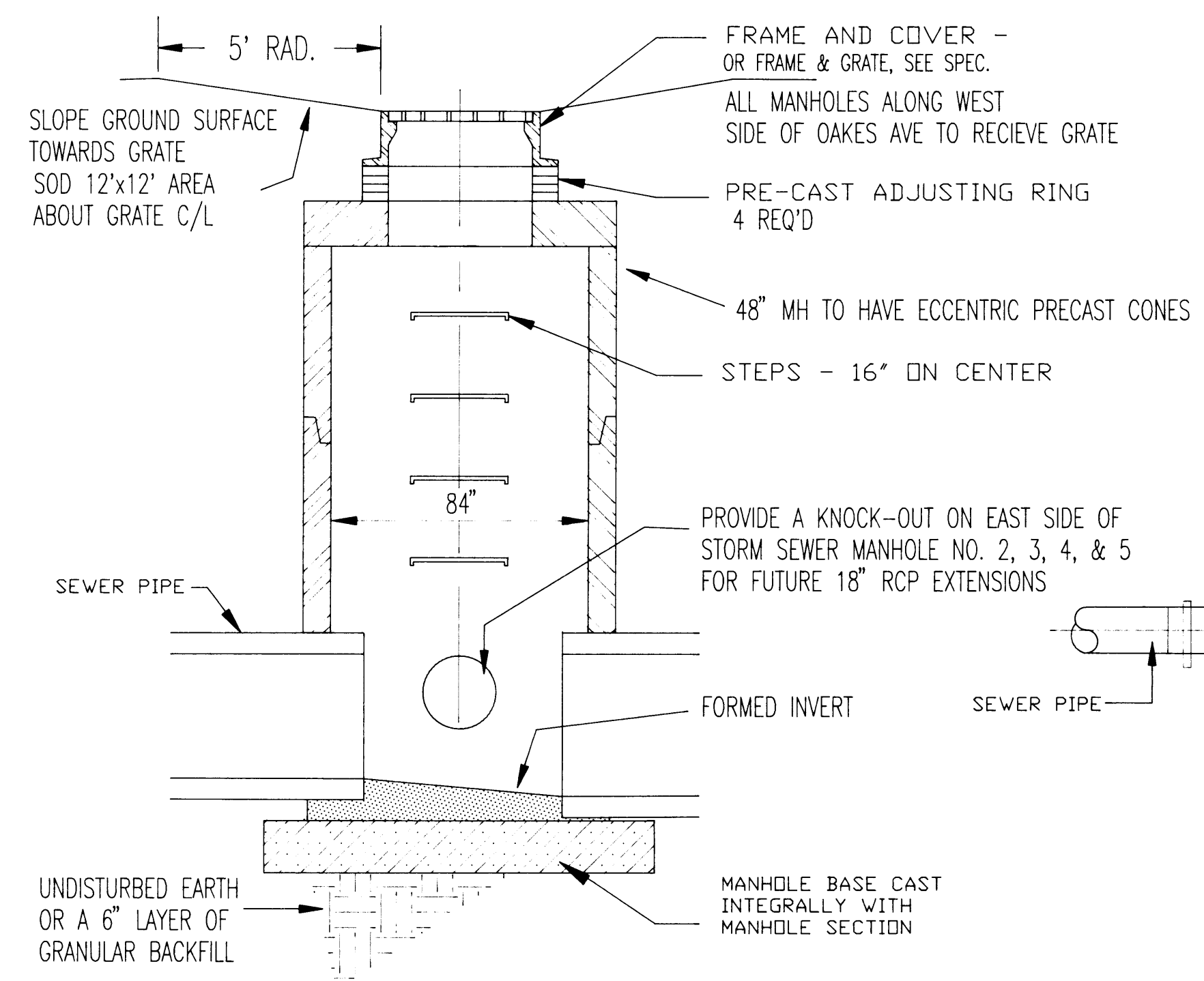
CONCRETE CURB & GUTTER DETAIL



ALLEY & DRIVEWAY RETURN DETAIL

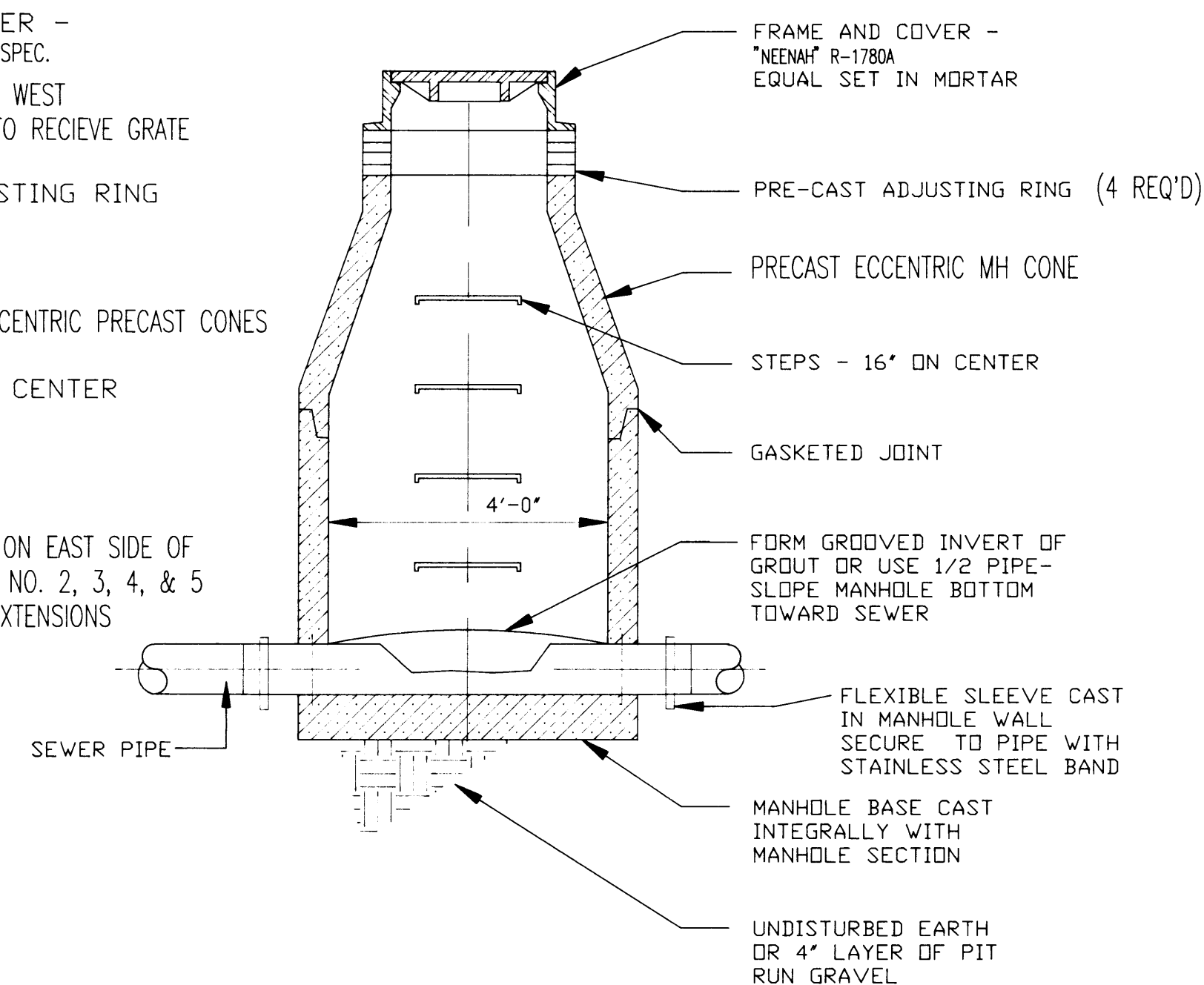
NOTE: MnDOT Std. Plate No. 7035J modified per this detail

DEPRESSION IN FLOW LINE @ CATCH BASIN



SPECIAL MANHOLE STORM SEWER

INLET - SPECIAL



TYPICAL MANHOLE SANITARY SEWER

WISCONSIN DEPARTMENT OF TRANSPORTATION STANDARD PLATES	
THE FOLLOWING STANDARD PLATES APPROVED BY THE FEDERAL HIGHWAY ADMINISTRATION, SHALL APPLY ON THIS PROJECT	
PLATE NO.	DESCRIPTION
S.D.D. 8A 5-7a	INLET COVER
S.D.D. 8A 5-7c	INLET COVER
S.D.D. 8B 6-3	4' I.D. TYPE 1 MANHOLE
S.D.D. 8B 7-3	6' I.D. TYPE 1 MANHOLE
S.D.D. 8C 1-4	TYPE 3 INLET
S.D.D. 8D 1-11	CONC. CURB, CONC. CURB & GUTTER & PAVEMENT TIES
S.D.D. 8D 5-8	CURB RAMPS
S.D.D. 8F 5-1	CLASS B BED. FOR CULV. PIPE OR ST. SEWER
S.D.D. 9B 3-5	CONC. BASE
S.D.D. 9B 10-2	ELECTRICAL PULL BOX
S.D.D. 9B 11-1a	POLE MOUNTINGS FOR TRAFFIC SIGNALS TYPE 2
S.D.D. 9B 11-1b	POLE MOUNT. SIGN. & LIGHT. UNITS TYPE 3
S.D.D. 9B 11-1c	POLE MOUNT. SIGN. & LIGHT. UNITS TYPE 4
S.D.D. 13C 4-9	TRANSVERSE JOINTS IN NON-REINF. CONC. PAV'T
-----	TRAFFIC SIGNALS & TRAFFIC COUNTER
-----	CONTROL CABINET BASE TYPE 1 & 2