

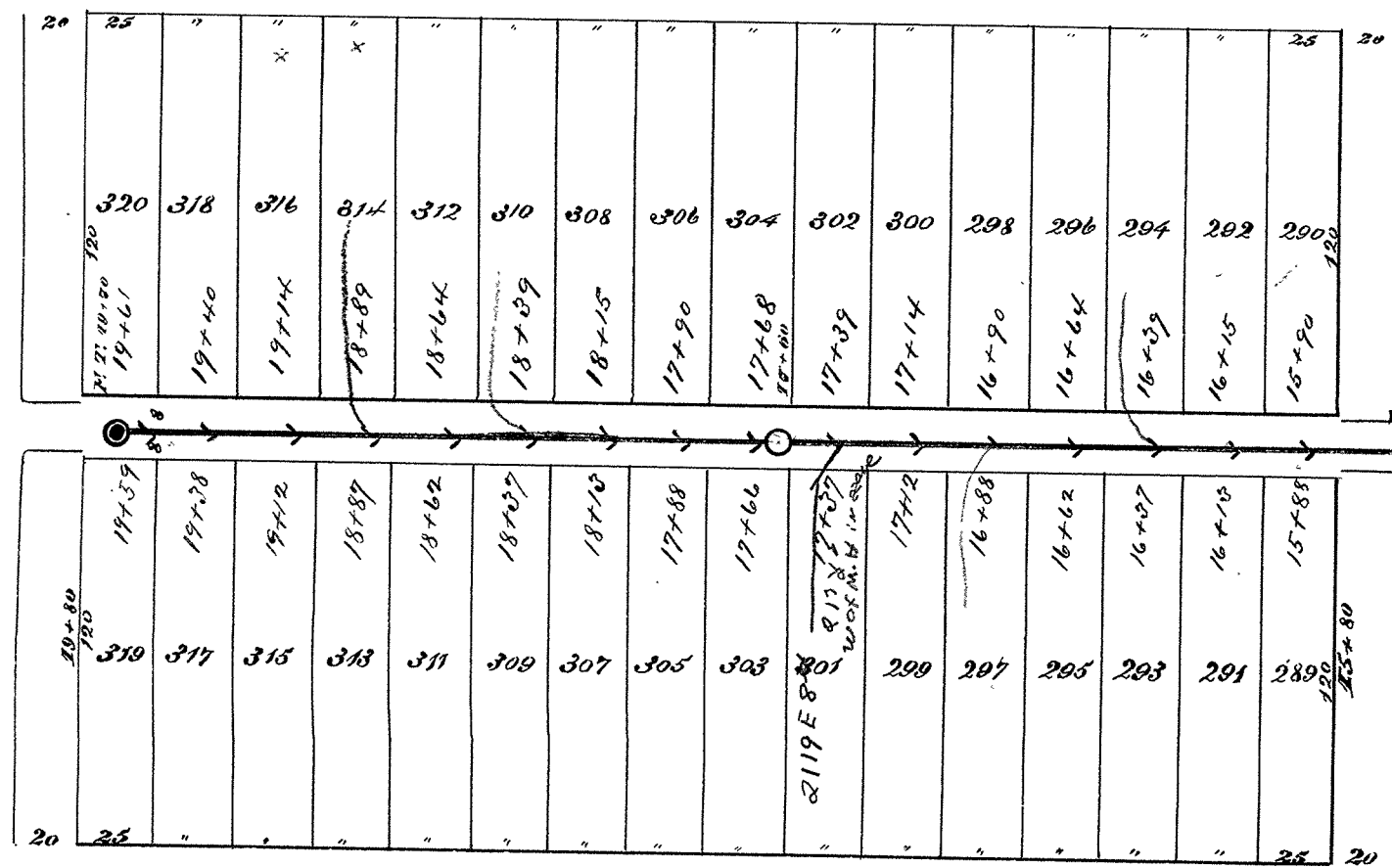
E. W. SEVENTH ST.

ST.

21ST AVE. E.
NETTLETON

22ND AVE. E.

23RD AVE. E.

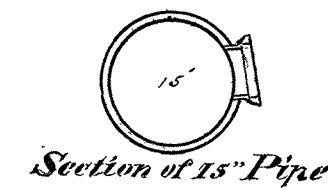


BECKER

ST.

THOMPSON

W. EIGHTH ST.

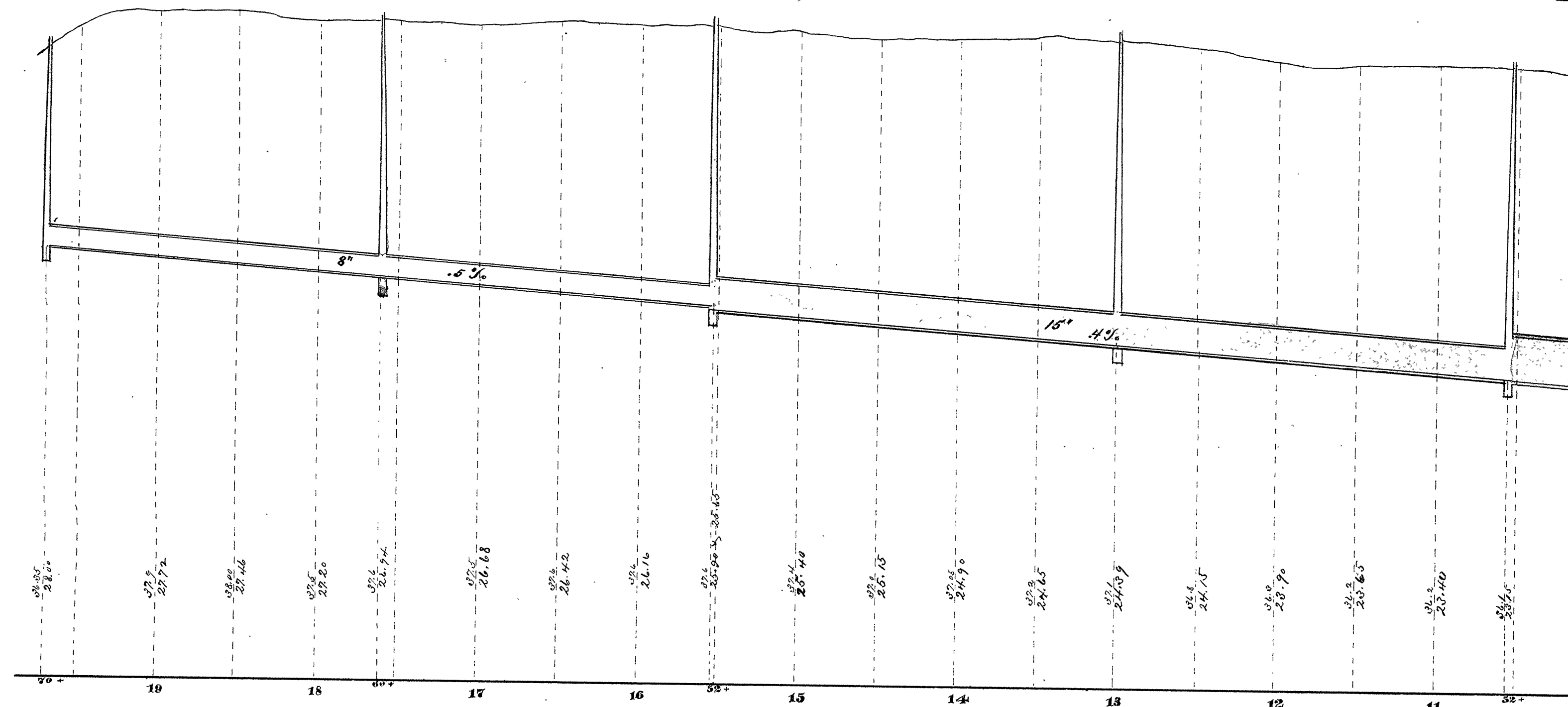


Scale: { Horizontal 1"=60'
Vertical 1"=4'
Section 1"=2'

CITY OF SUPERIOR

SEWER PLAN

Contract let May 25, 1891
completed Aug. 8, 1891
Thos. White & Co., Contractor
W. H. France, Inspector
E. B. Banks, City Engr.



Plan & Profile of Sewer in Alley betw. W. Seventh and W. Eighth Sts. from Thompson to Nettleton Ave.

Base Line 10ft. above City Datum