

INDEX OF SHEETS

- Sheet No. 1 Title
- Sheet No. 2 General Notes
- Sheet No. 3-11 Typical Sections and Details
- Sheet No. 12 Erosion Control
- Sheet No. 13-15 Pavement Markings
- Sheet No. 16-18 Miscellaneous Quantities
- Sheet No. 19-21 Plan and Profile
- Sheet No. 22-23 Storm Sewer Leads
- Sheet No. 24-40 Cross Sections
- Sheet No. 41-44 Lighting

TOTAL SHEETS = 44

CITY OF SUPERIOR

PLAN OF PROPOSED IMPROVEMENT

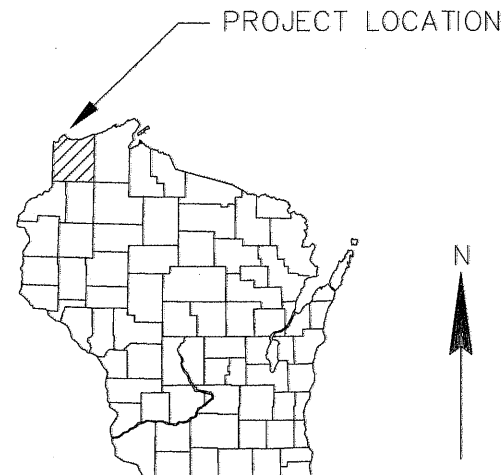
EAST 5th STREET

20th AVENUE – STINSON AVENUE

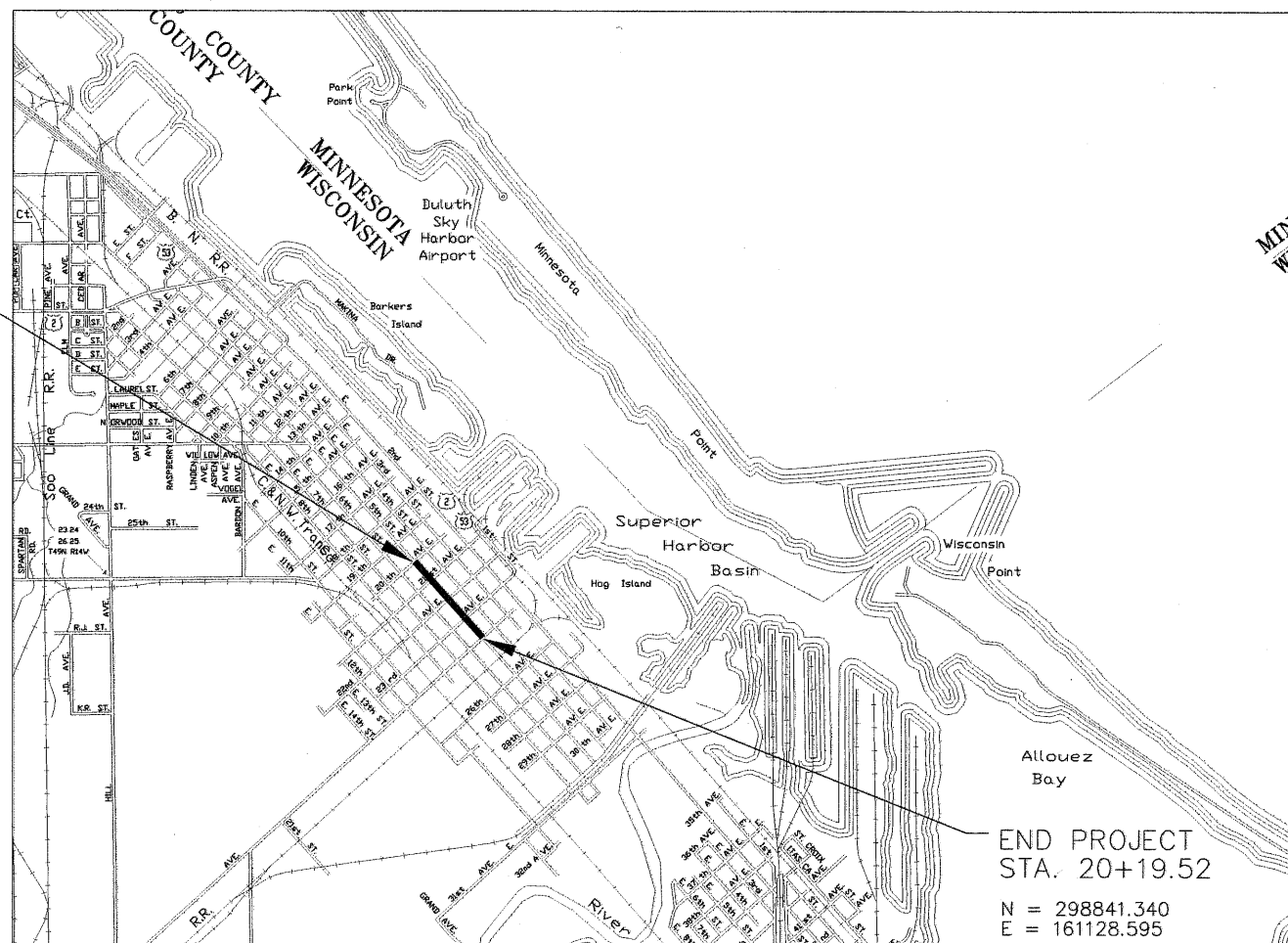
DOUGLAS COUNTY

RECORD DRAWING
ADDENDUM TO PLAN
12/20/05

SEH PROJECT NUMBER
SUPER0504.00



BEGIN PROJECT
STA. 0+28.00
N = 300362.475
E = 159800.212



DESIGN DESIGNATION

- A.D.T. =
- A.D.T. =
- D.H.V. =
- D. =
- T. =
- DESIGN SPEED =
- ESALS =

CONVENTIONAL SYMBOLS

- COUNTY LINE
- CORPORATE LIMITS
- PROPERTY LINE
- LOT LINE
- LIMITED EASEMENT
- EXISTING RIGHT OF WAY
- PROPOSED OR NEW R/W LINE
- SURVEY LINE
- SLOPE INTERCEPT
- ORIGINAL GROUND
- MARSH OR ROCK PROFILE
(To be noted as such)
- MARSH AREA
- WOODED OR SHRUB AREA

- COMBUSTIBLE FLUIDS
- UNDERGROUND UTILITIES
- GAS
- ELECTRIC
- TELEPHONE OR TELEGRAPH
- COMMUNICATIONS LINE
- SERVICE PEDESTAL
- POWER POLE
- TELEPHONE POLE
- RAILROAD
- SANITARY SEWER
- STORM SEWER
- WATER
- EXISTING CULVERT
- PROPOSED CULVERT
(Box or Pipe)
- CULVERT (Profile View)



- G
- E
- T
- C
- Power Pole
- Telephone Pole
- RAILROAD
- SAN
- SS
- W
- Existing Culvert
- Proposed Culvert
- Culvert (Profile View)

LAYOUT
SCALE 0 0.09 MI.

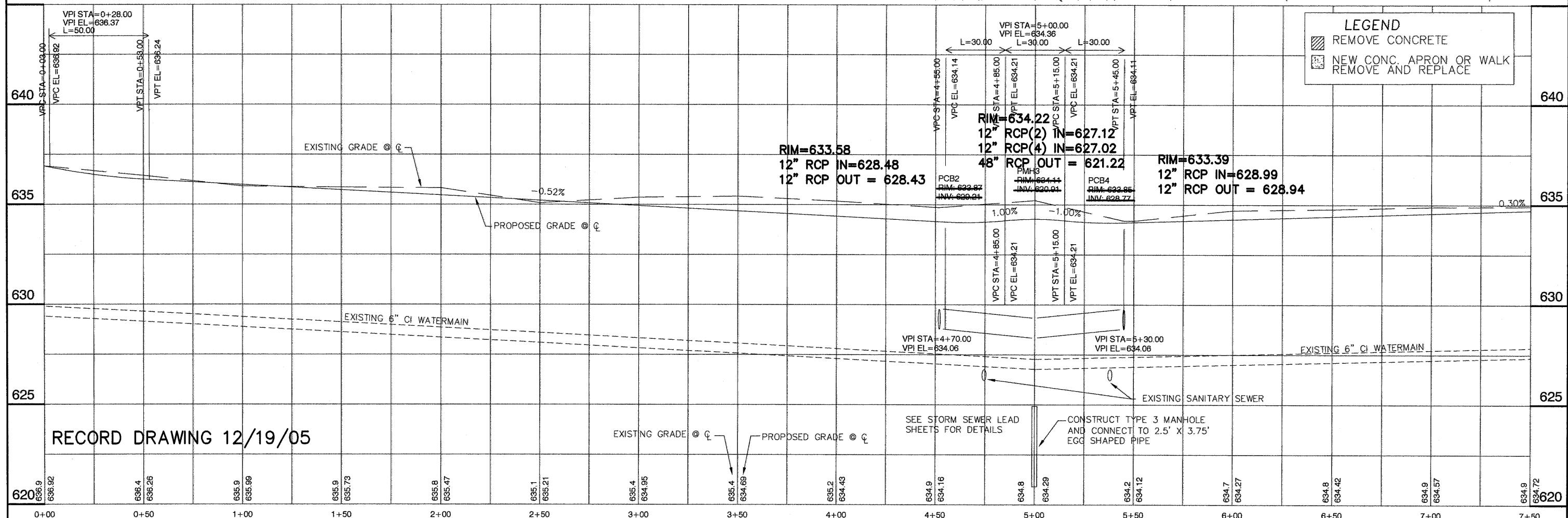
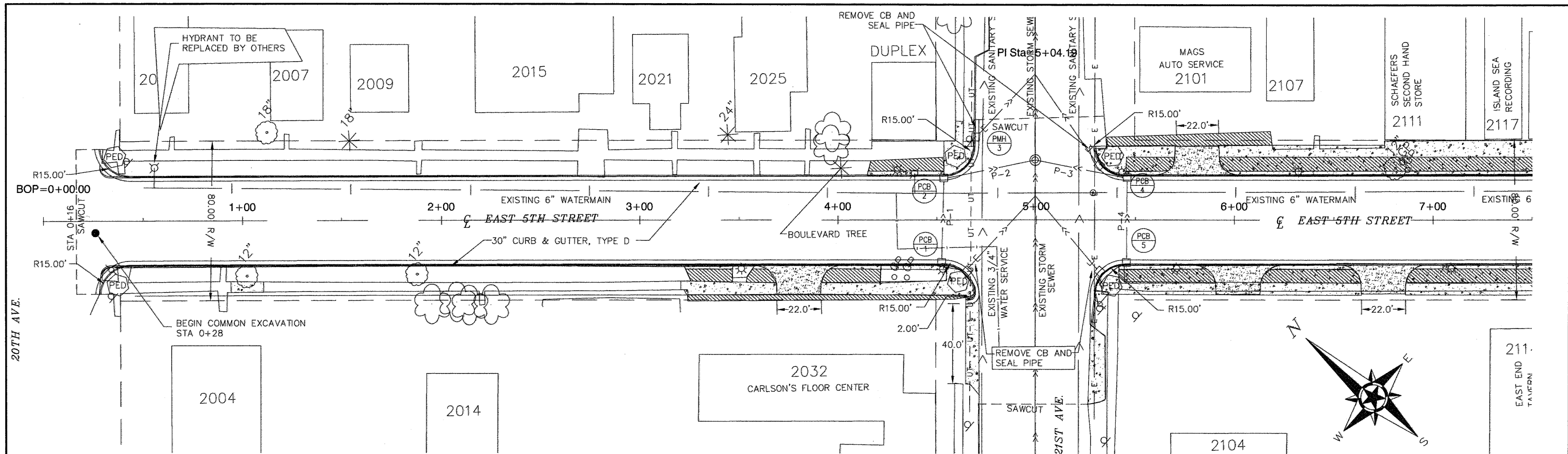
TOTAL NET LENGTH OF CENTERLINE = 0.380 MI.

END PROJECT
STA. 20+19.52
N = 298841.340
E = 161128.595

Coordinates on this plan are referenced to the Wisconsin State Plane Coordinate System (WSPCS), North Zone.

APPROVED FOR
CITY of SUPERIOR
DATE: CITY ENGINEER

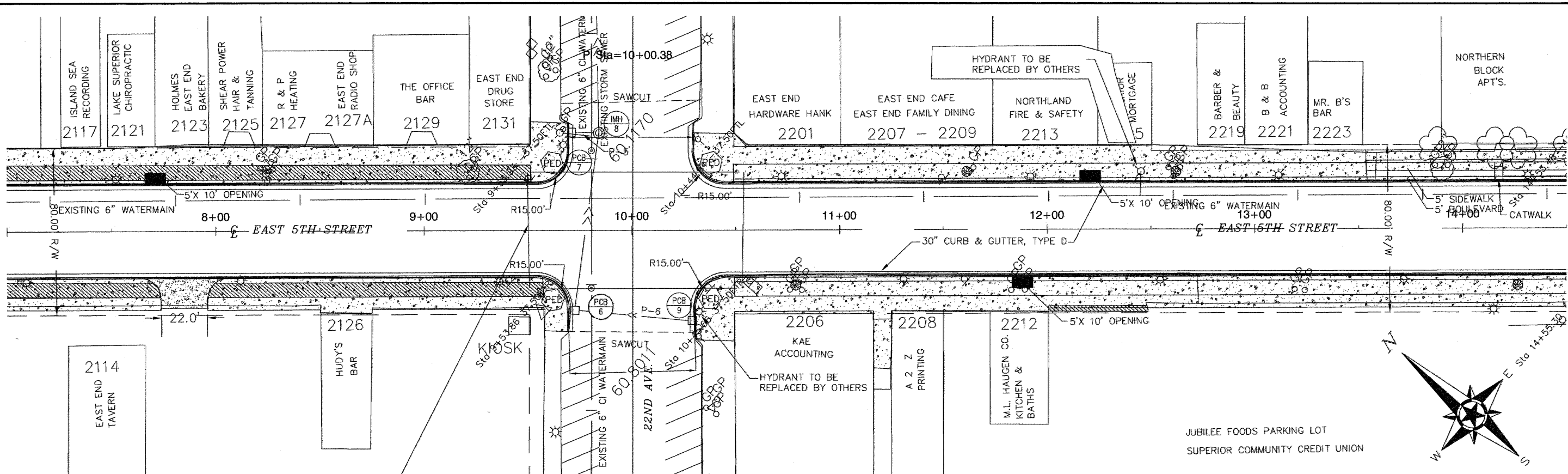
ORIGINAL PLANS PREPARED BY:
SEH
218-722-0547
831 E. 2nd Street
Duluth, MN 55805-2103



LEGEND

- REMOVE CONCRETE
- NEW CONC. APRON OR WALK REMOVE AND REPLACE

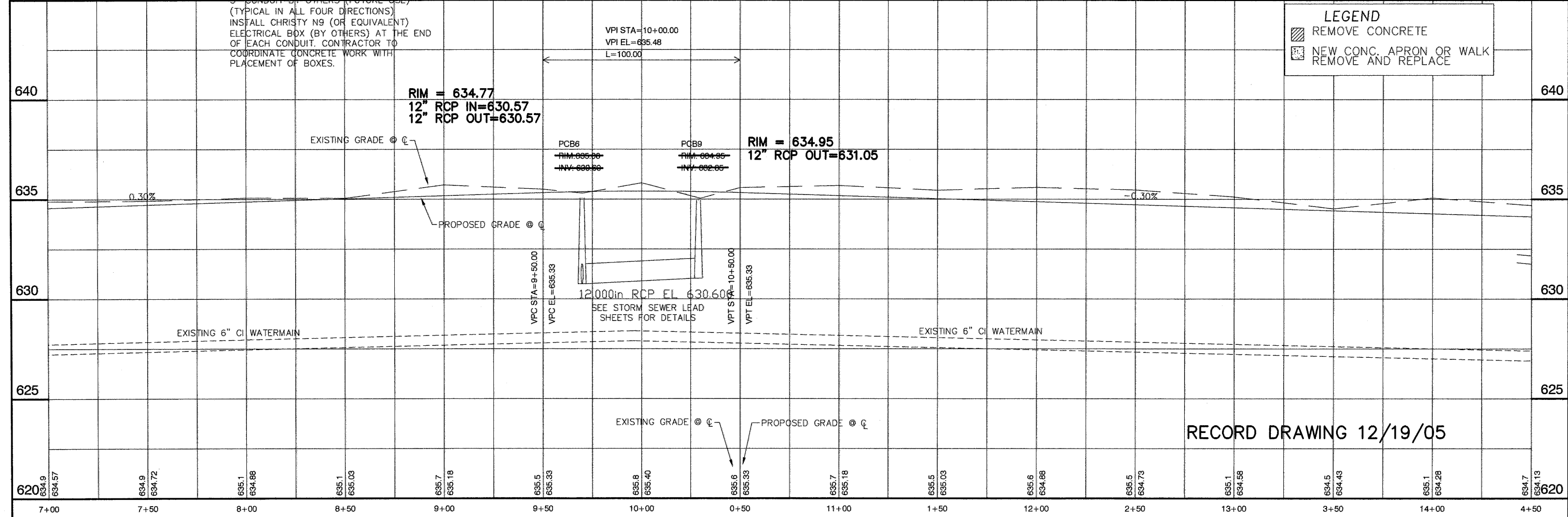
RECORD DRAWING 12/19/05



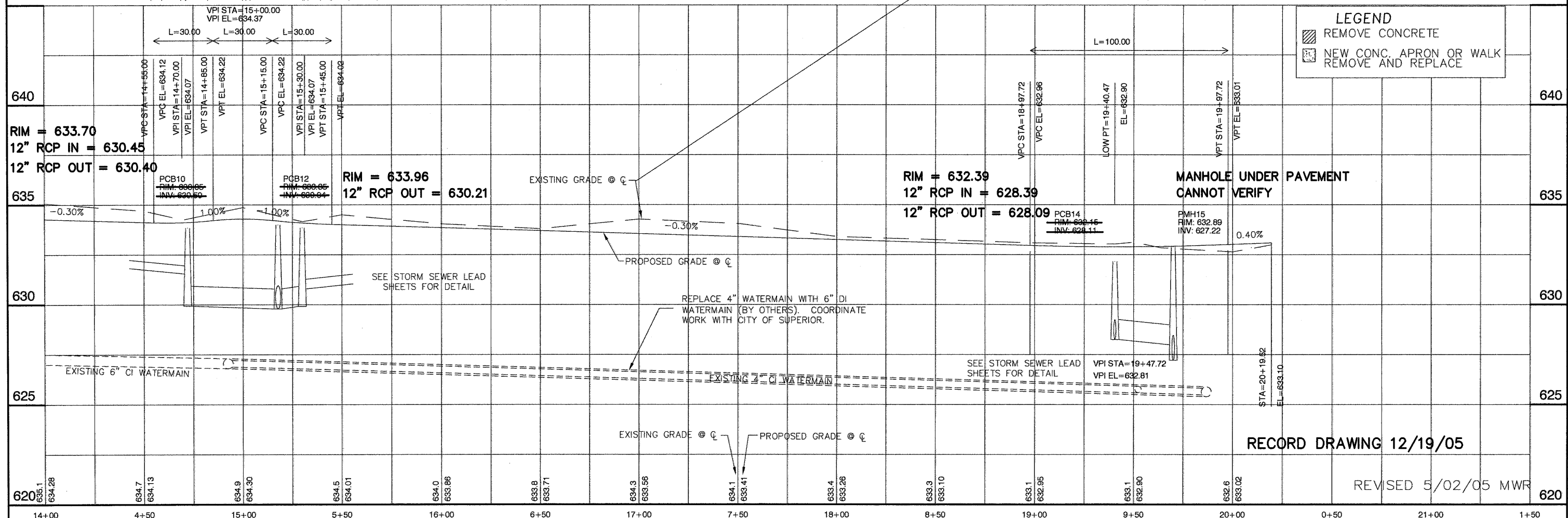
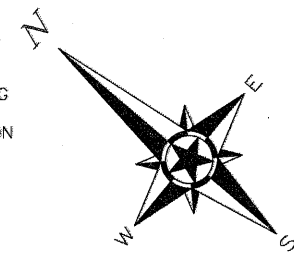
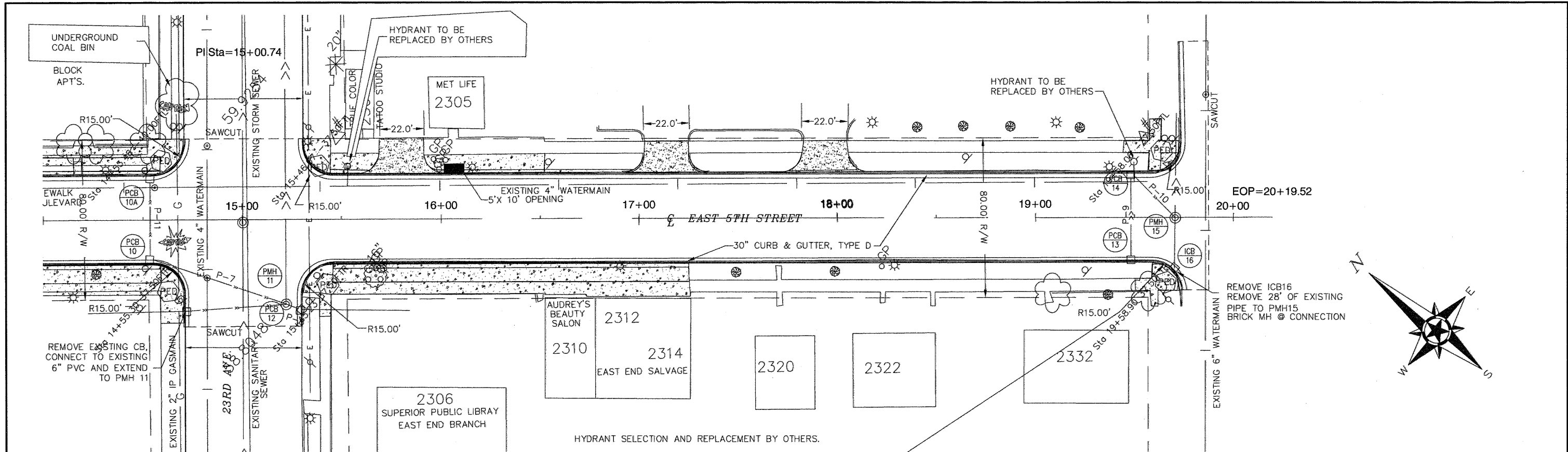
2" CONDUIT BY OTHERS (FUTURE USE)
 (TYPICAL IN ALL FOUR DIRECTIONS)
 INSTALL CHRISTY N9 (OR EQUIVALENT)
 ELECTRICAL BOX (BY OTHERS) AT THE END
 OF EACH CONDUIT. CONTRACTOR TO
 COORDINATE CONCRETE WORK WITH
 PLACEMENT OF BOXES.

LEGEND

- REMOVE CONCRETE
- NEW CONC. APRON OR WALK REMOVE AND REPLACE



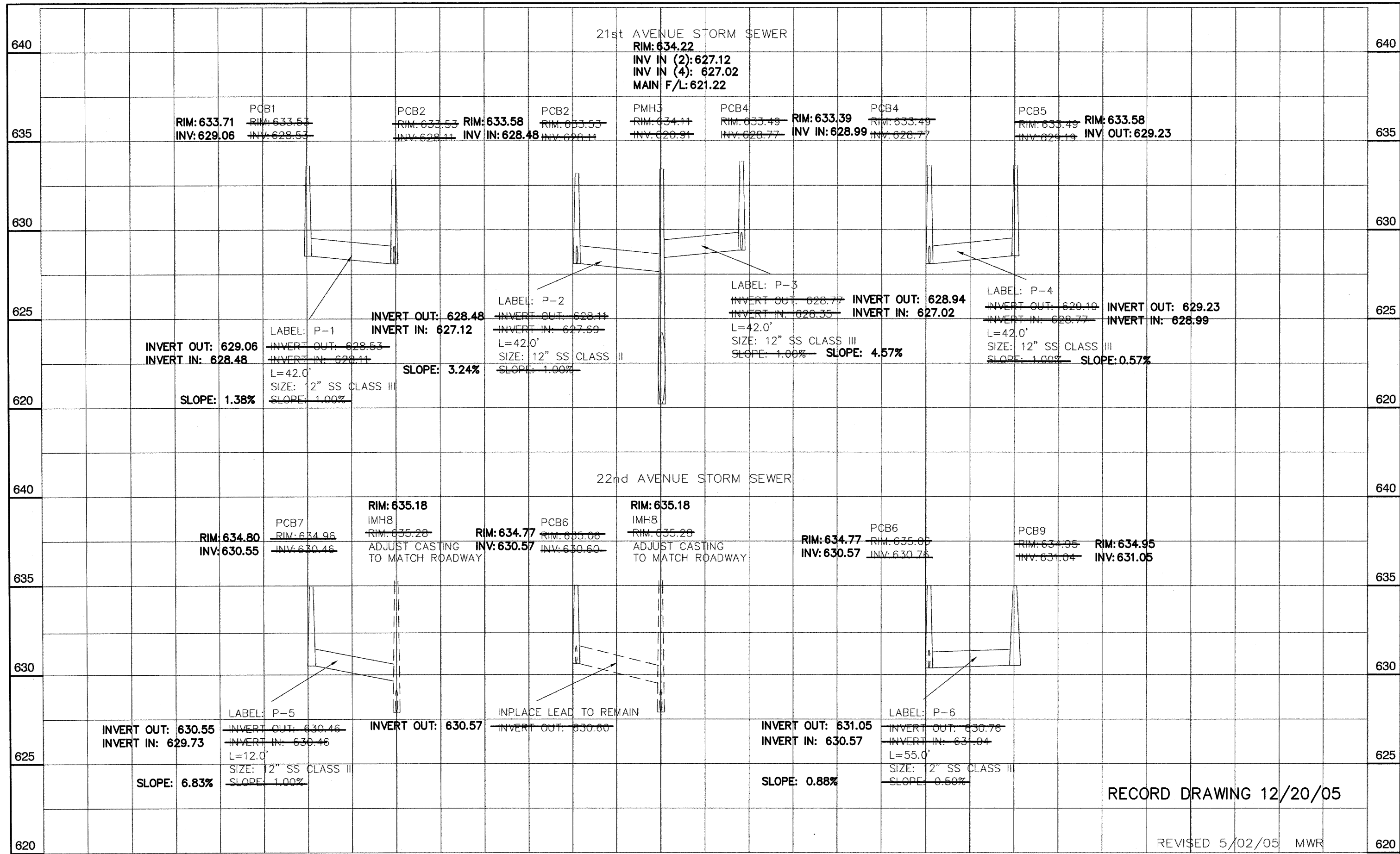
RECORD DRAWING 12/19/05



LEGEND

- REMOVE CONCRETE
- NEW CONC. APRON OR WALK REMOVE AND REPLACE

RECORD DRAWING 12/19/05
 REVISED 5/02/05 MWR



RECORD DRAWING 12/20/05

REVISED 5/02/05 MWR

