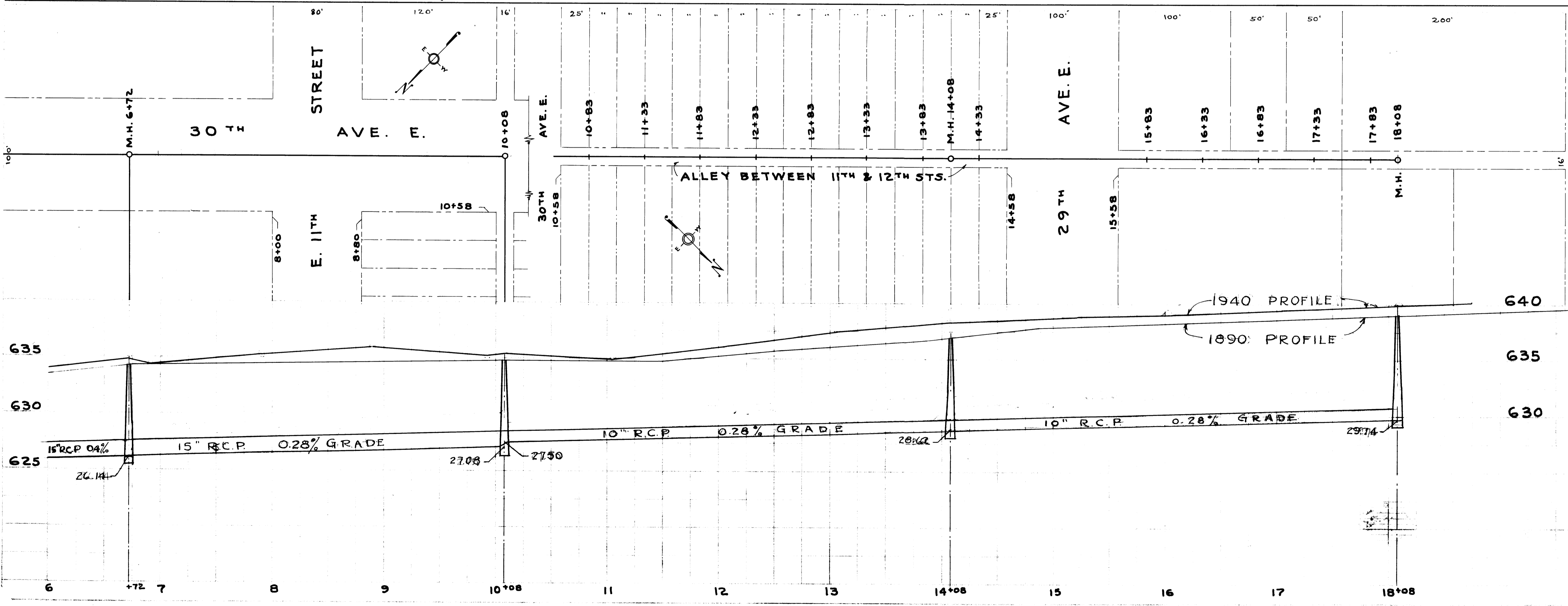


PLAN & PROFILE OF
 PROPOSED SEWER EXTENDING
 144 FT. S. E. FROM M. H. IN 19TH
 AVE. E. BETW. 11TH & 12TH STS.

SCALE: HORIZ. 1 IN. = 20 FT. 4-20-240
 VERT. 1 IN. = 5 FT.

CITY OF SUPERIOR
 ENGINEERING DEPARTMENT
 T.M. BASTERASH - CITY ENGINEER

DR'N BY WHW CHECKED APP. *JMD*
 FILE NO. R.H.D.



PROPOSED EXTENSION OF SEWER
 ON 30TH AVE. E. FROM
 ALLEY BETWEEN E. 9TH & 10TH ST. TO
 ALLEY BETWEEN E. 11TH & 12TH STS.
 THENCE N.W. FOR A DISTANCE
 OF 800 FT. IN ALLEY BETWEEN
 E. 11TH & E. 12TH STS.

CITY OF SUPERIOR
 ENGINEERING DEPARTMENT
 T.M. BASTERASH - CITY ENGINEER

SCALE: HORIZ. 1" = 50 FT. APR. 6, 1940
 VERT. 1" = 5 FT.

DR'N BY W.H.W. DES. BY APP.
 FILE NO. R.H.D.

A-6-55