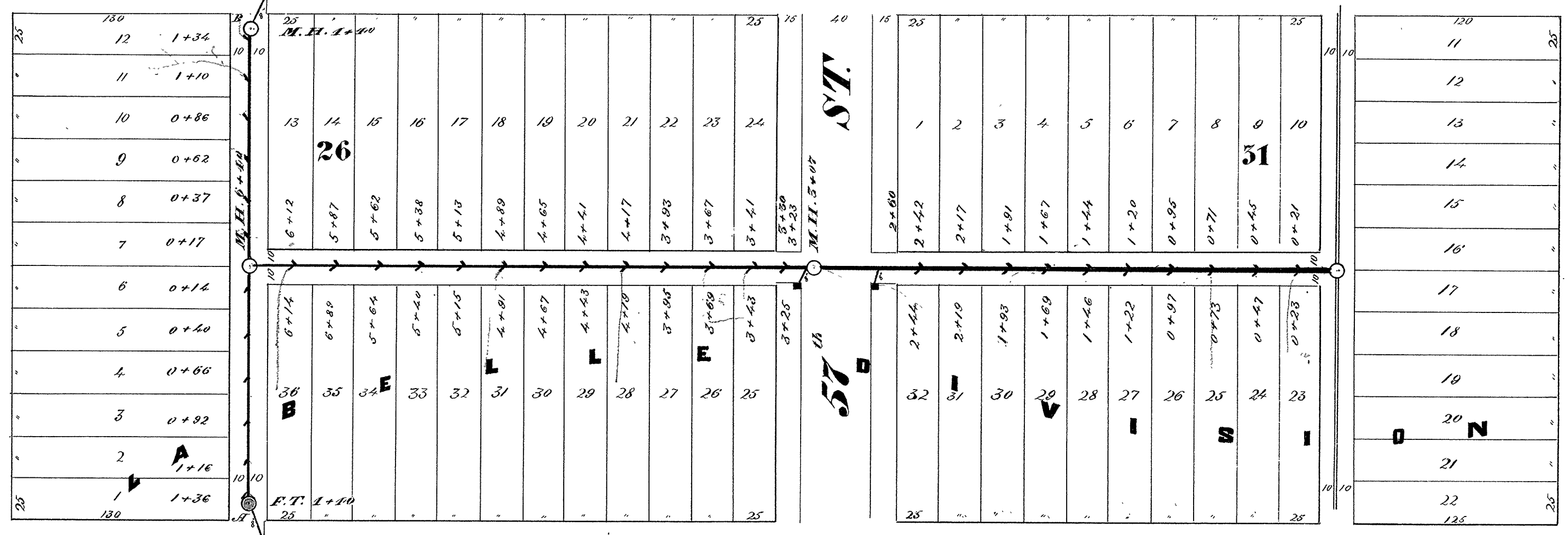


CITY OF SUPERIOR SEWER PLAN

Contract let May 23, 1892
" completed Nov. 1, 1892
Johnson & Dole, Contractor
H. A. Carlson & T. A. King, Inspectors
A. S. Cooper, City Engr.

56 St.
STINSON AVE.



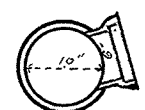
58th ST.

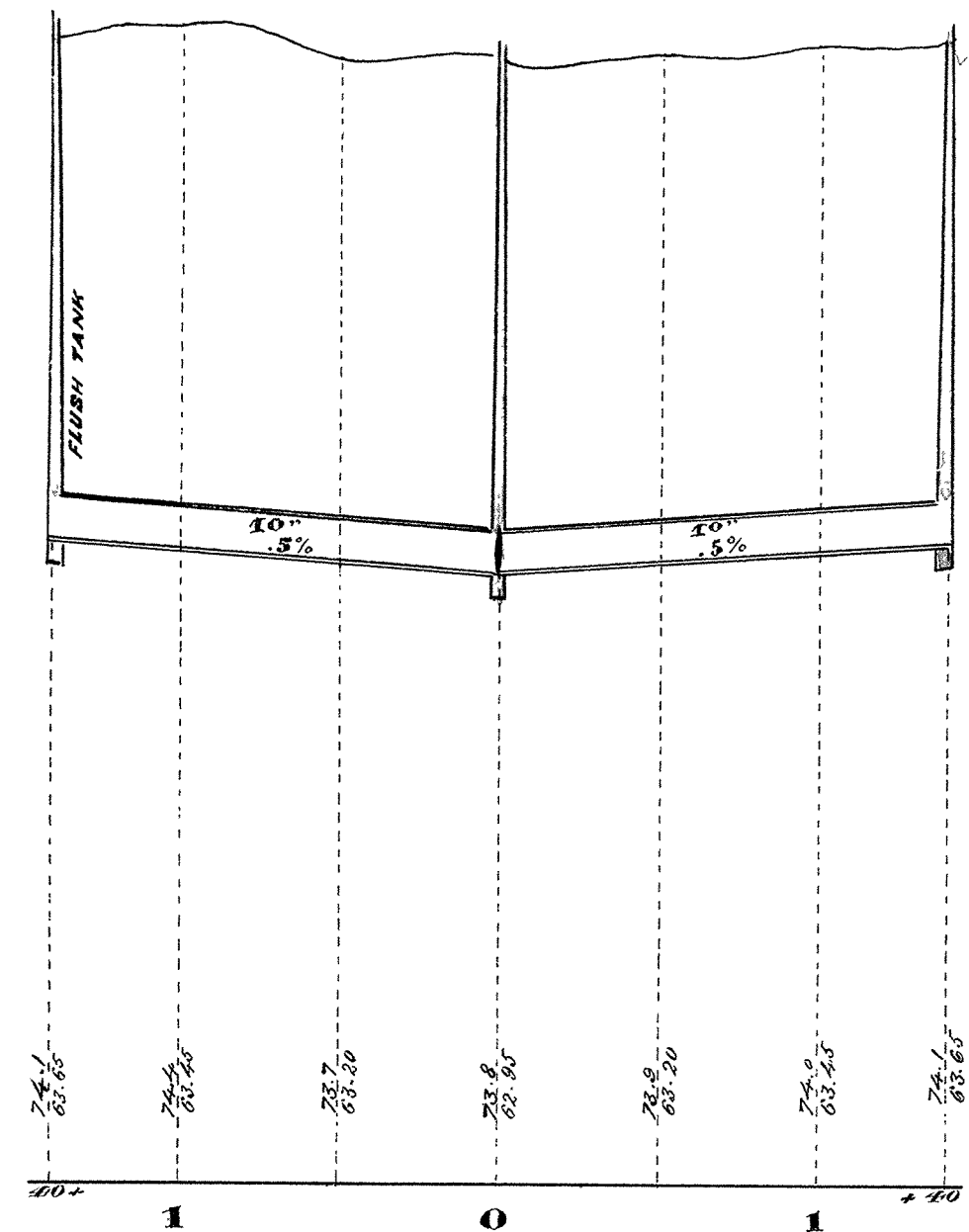
JOHN AVE.

AVE.

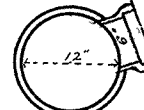
1893

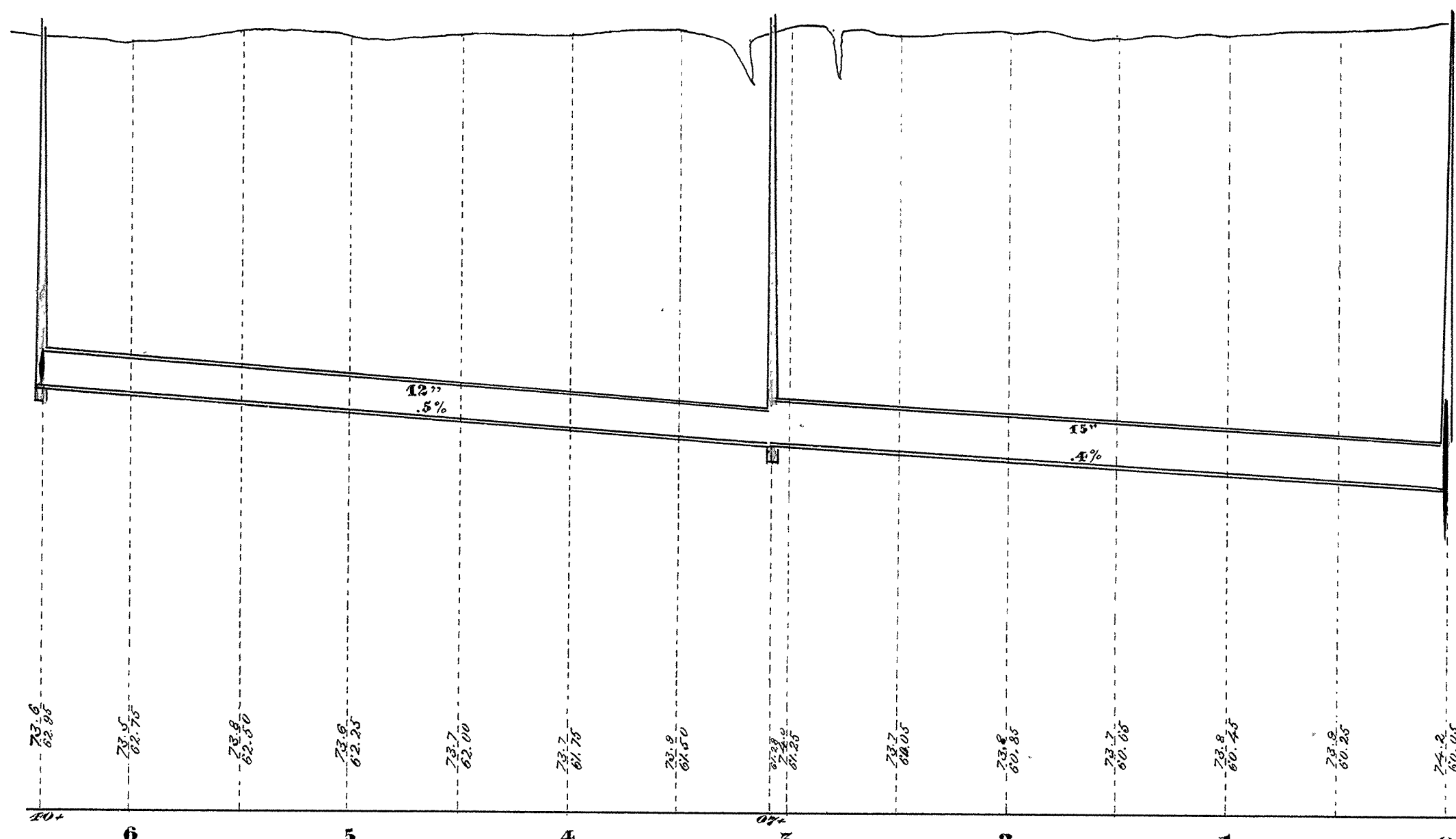
Scale: Horizontal 60 ft. = 1 inch
Vertical 4 ft. = 1 inch
Section 2 ft. = 1 inch


Section of 10" Pipe



Profile of Sewer from A to B


Section of 12" Pipe



Plan & Profile of Sewer in Alley betw. John & Hughitt Aves. from 58th St. to Stinson Ave

Base line 50 ft. above datum

5-6