

BENCH MARKS			
NO.	STATION	DESCRIPTION	ELEV.
1	475+17	CITY MONUMENT 30' RT.	672.41
2	478+71	NE COR. SIGN BASE 45' LT	674.98

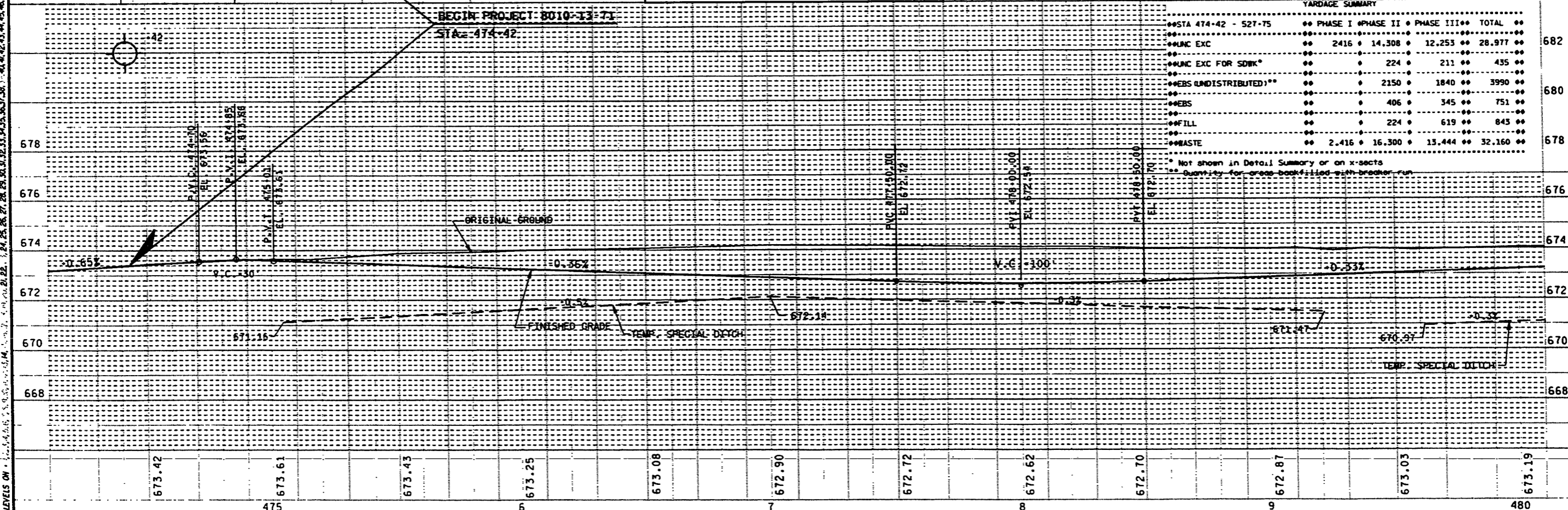
STATE PROJECT NUMBER	8010-13-71	SHEET NO.	S.0
TOWER AVENUE, CITY OF SUPERIOR		S.T.H. 35 DOUGLAS COUNTY	

ORIGIN OF LEVELS:
 IN THE CITY OF SUPERIOR, ON BROADWAY STREET, TWO BLOCKS WEST OF TOWER AVENUE, IN THE EAST FACE OF THE FORMER UNION STATION, 46' FROM THE NORTH SIDE OF THE BUILDING, 13' FROM THE NORTH EDGE OF THE CENTER PROJECTION OF THE BUILDING, 1' ABOVE GROUND AND IN THE BROWN SANDSTONE WALL. ELEVATION = 635.934

YARDAGE SUMMARY				
STA 474+42 - 527+75	PHASE I	PHASE II	PHASE III	TOTAL
UNC EXC	2416	14,308	12,253	28,977
UNC EXC FOR SDWK*		224	211	435
EBS (UNDISTRIBUTED)**		2150	1840	3990
EBS		406	345	751
FILL		224	619	843
WASTE	2,416	16,300	13,444	32,160

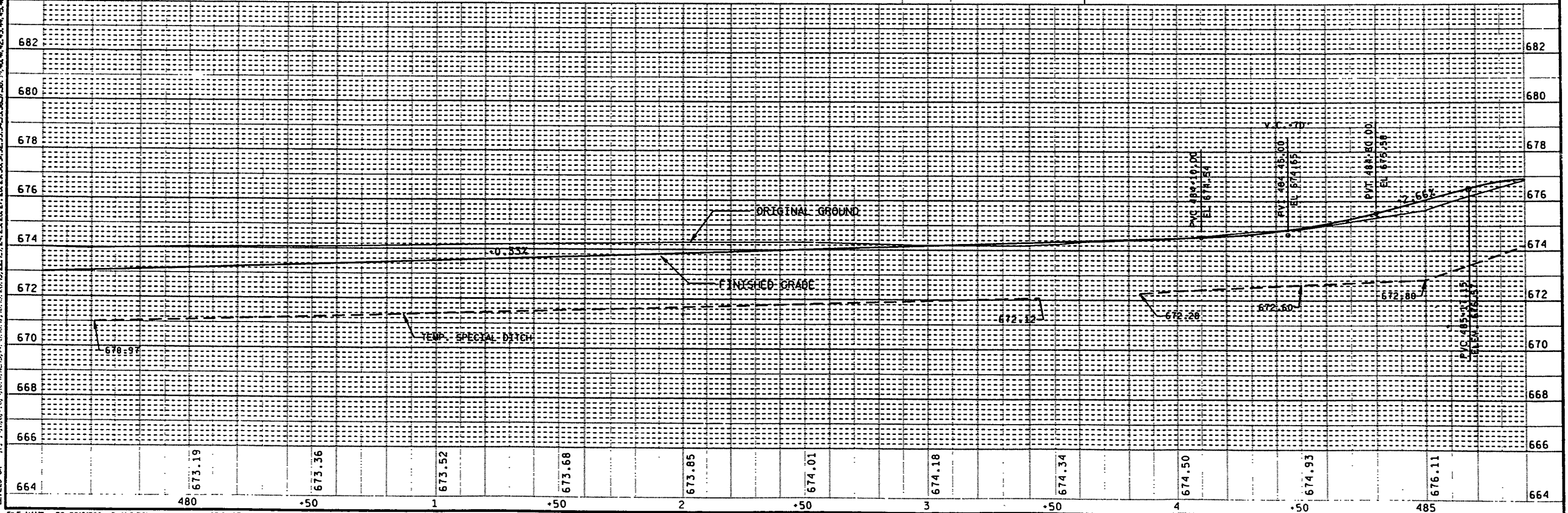
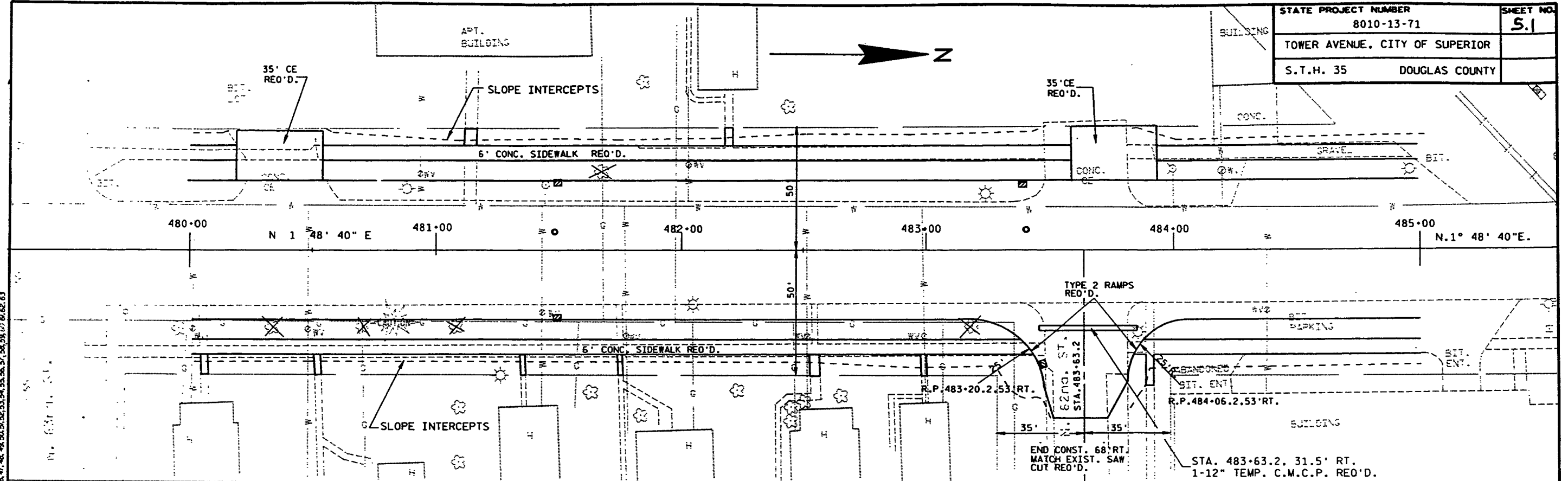
* Not shown in Detail Summary or on x-sections
 ** Quantity for areas backfilled with breaker run

LEVELS ON 1:24, 25, 26, 27, 28, 29, 30, 31, 32, 33, 34, 35, 36, 37, 38, 39, 40, 41, 42, 43, 44, 45, 46, 47, 48, 49, 50, 51, 52, 53, 54, 55, 56, 57, 58, 59, 60, 61, 62, 63



7

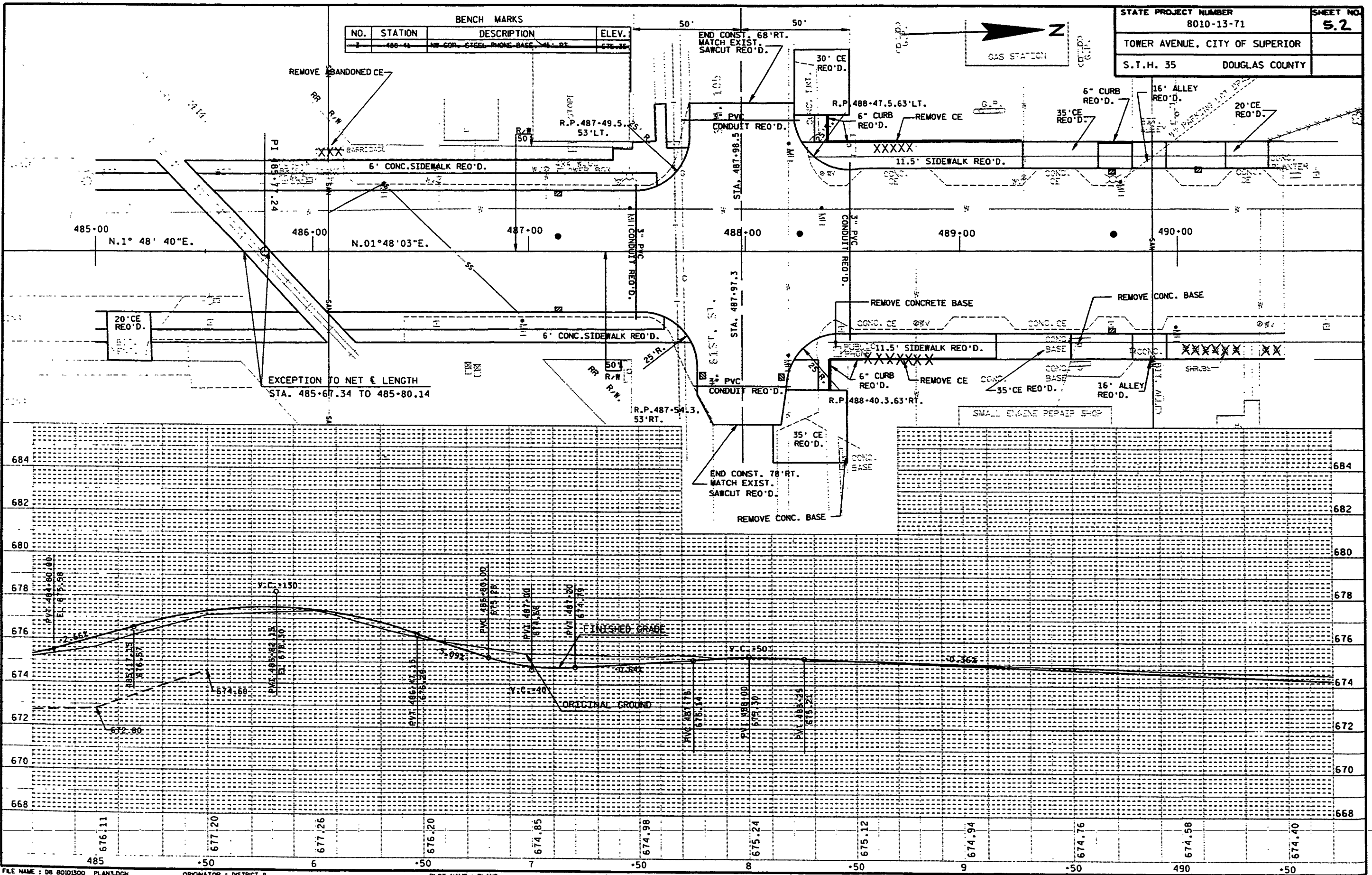
STATE PROJECT NUMBER	8010-13-71	SHEET NO.	5.1
TOWER AVENUE, CITY OF SUPERIOR			
S.T.H. 35	DOUGLAS COUNTY		



LEVELS ON 1, 2, 3, 4, 5, 6, 7, 8, 9, 10, 11, 12, 13, 14, 15, 16, 17, 18, 19, 20, 21, 22, 23, 24, 25, 26, 27, 28, 29, 30, 31, 32, 33, 34, 35, 36, 37, 38, 39, 40, 41, 42, 43, 44, 45, 46, 47, 48, 49, 50, 51, 52, 53, 54, 55, 56, 57, 58, 59, 60, 61, 62, 63

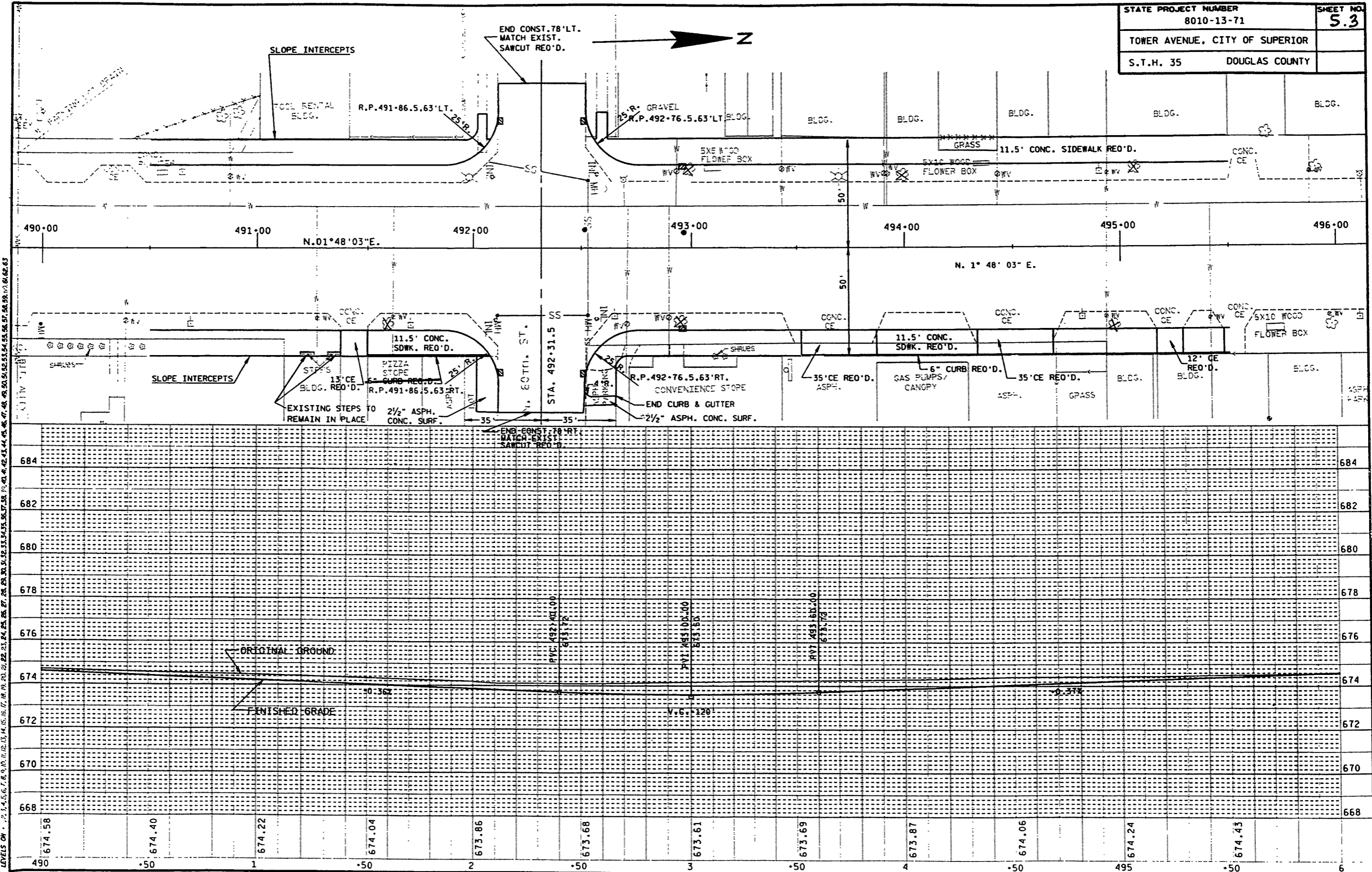
STATE PROJECT NUMBER	8010-13-71	SHEET NO.	5.2
TOWER AVENUE, CITY OF SUPERIOR		S.T.H. 35 DOUGLAS COUNTY	

BENCH MARKS			
NO.	STATION	DESCRIPTION	ELEV.
1	488-44	NE COR. STEEL PHONE BASE 45' RT.	676.36



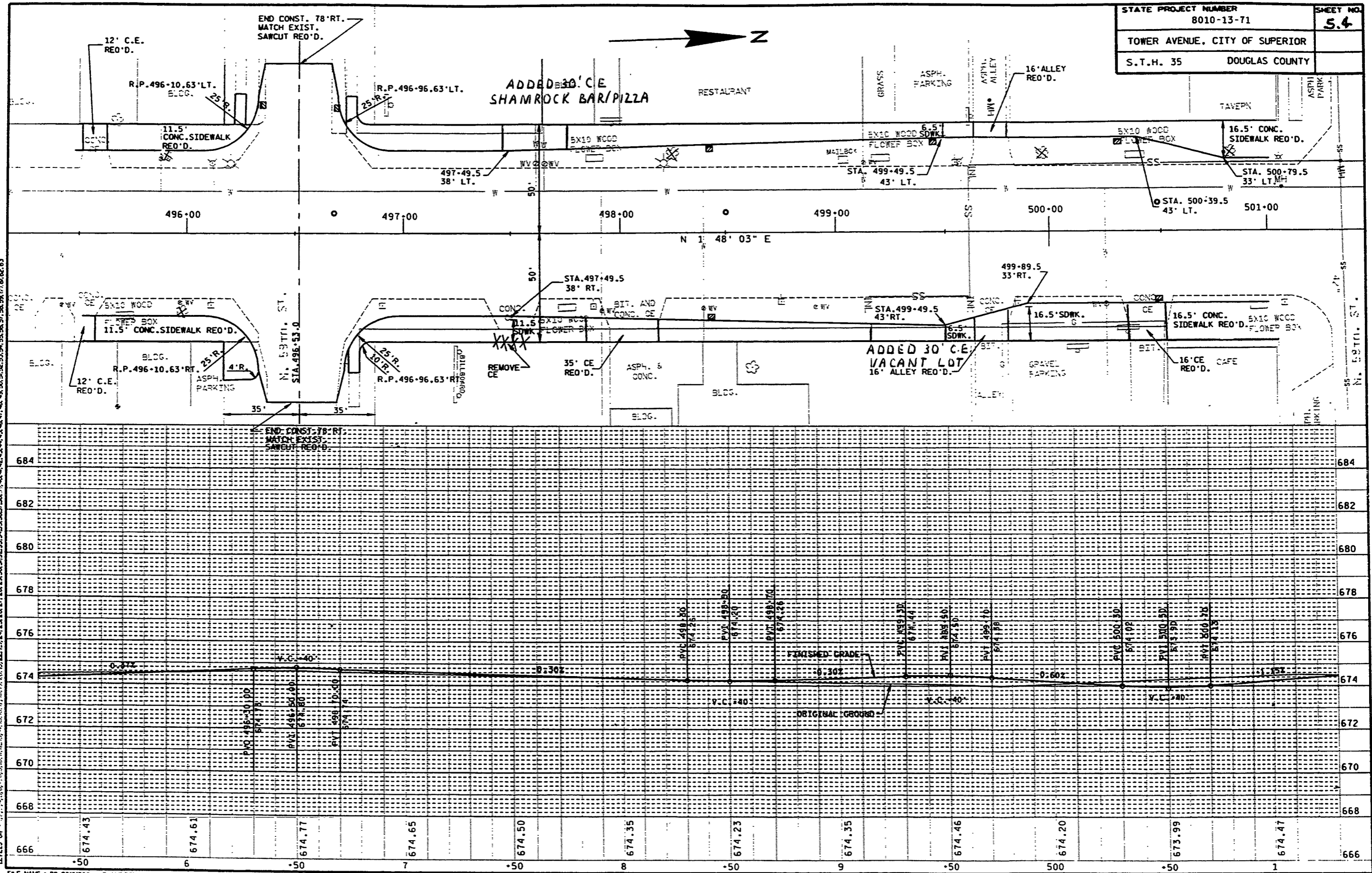
LEVELS ON 485+00 485+05 485+10 485+15 485+20 485+25 485+30 485+35 485+40 485+45 485+50 485+55 485+60 485+65 485+70 485+75 485+80 485+85 485+90 485+95 486+00 486+05 486+10 486+15 486+20 486+25 486+30 486+35 486+40 486+45 486+50 486+55 486+60 486+65 486+70 486+75 486+80 486+85 486+90 486+95 487+00 487+05 487+10 487+15 487+20 487+25 487+30 487+35 487+40 487+45 487+50 487+55 487+60 487+65 487+70 487+75 487+80 487+85 487+90 487+95 488+00 488+05 488+10 488+15 488+20 488+25 488+30 488+35 488+40 488+45 488+50 488+55 488+60 488+65 488+70 488+75 488+80 488+85 488+90 488+95 489+00 489+05 489+10 489+15 489+20 489+25 489+30 489+35 489+40 489+45 489+50 489+55 489+60 489+65 489+70 489+75 489+80 489+85 489+90 489+95 490+00 490+05 490+10 490+15 490+20 490+25 490+30 490+35 490+40 490+45 490+50 490+55 490+60 490+65 490+70 490+75 490+80 490+85 490+90 490+95

STATE PROJECT NUMBER 8010-13-71	SHEET NO. 5.3
TOWER AVENUE, CITY OF SUPERIOR	
S.T.H. 35	DOUGLAS COUNTY

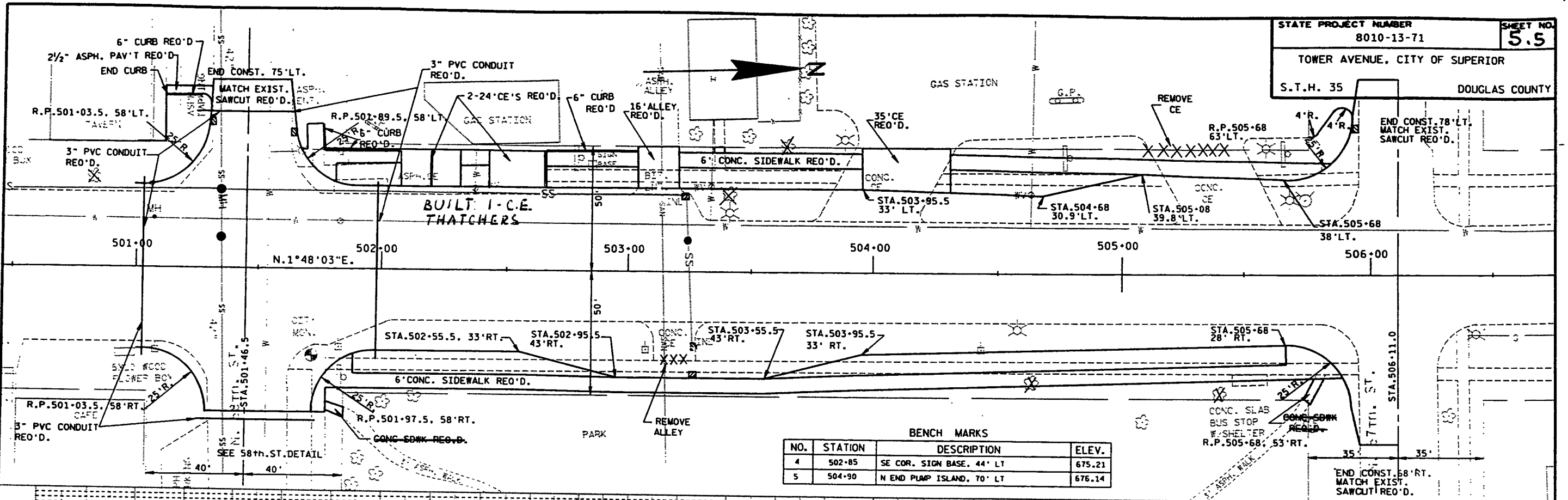


LEVELS ON: 1. 674.58, 2. 674.40, 3. 674.22, 4. 674.04, 5. 673.86, 6. 673.68, 7. 673.50, 8. 673.32, 9. 673.14, 10. 672.96, 11. 672.78, 12. 672.60, 13. 672.42, 14. 672.24, 15. 672.06, 16. 671.88, 17. 671.70, 18. 671.52, 19. 671.34, 20. 671.16, 21. 670.98, 22. 670.80, 23. 670.62, 24. 670.44, 25. 670.26, 26. 670.08, 27. 669.90, 28. 669.72, 29. 669.54, 30. 669.36, 31. 669.18, 32. 669.00, 33. 668.82, 34. 668.64, 35. 668.46, 36. 668.28, 37. 668.10, 38. 667.92, 39. 667.74, 40. 667.56, 41. 667.38, 42. 667.20, 43. 667.02, 44. 666.84, 45. 666.66, 46. 666.48, 47. 666.30, 48. 666.12, 49. 665.94, 50. 665.76, 51. 665.58, 52. 665.40, 53. 665.22, 54. 665.04, 55. 664.86, 56. 664.68, 57. 664.50, 58. 664.32, 59. 664.14, 60. 663.96, 61. 663.78, 62. 663.60, 63. 663.42, 64. 663.24, 65. 663.06, 66. 662.88, 67. 662.70, 68. 662.52, 69. 662.34, 70. 662.16, 71. 661.98, 72. 661.80, 73. 661.62, 74. 661.44, 75. 661.26, 76. 661.08, 77. 660.90, 78. 660.72, 79. 660.54, 80. 660.36, 81. 660.18, 82. 660.00, 83. 659.82, 84. 659.64, 85. 659.46, 86. 659.28, 87. 659.10, 88. 658.92, 89. 658.74, 90. 658.56, 91. 658.38, 92. 658.20, 93. 658.02, 94. 657.84, 95. 657.66, 96. 657.48, 97. 657.30, 98. 657.12, 99. 656.94, 100. 656.76

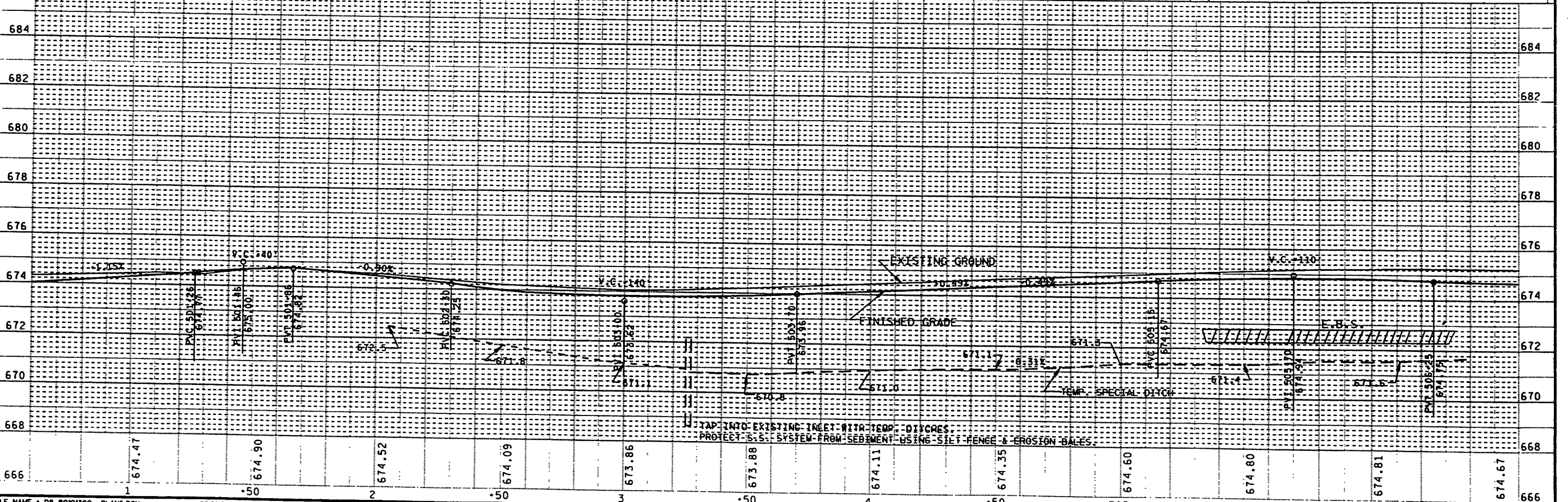
STATE PROJECT NUMBER 8010-13-71	SHEET NO. 5.4
TOWER AVENUE, CITY OF SUPERIOR	
S.T.H. 35	DOUGLAS COUNTY



LEVELS ON: 1, 2, 3, 4, 5, 6, 7, 8, 9, 10, 11, 12, 13, 14, 15, 16, 17, 18, 19, 20, 21, 22, 23, 24, 25, 26, 27, 28, 29, 30, 31, 32, 33, 34, 35, 36, 37, 38, 39, 40, 41, 42, 43, 44, 45, 46, 47, 48, 49, 50, 51, 52, 53, 54, 55, 56, 57, 58, 59, 60, 61, 62, 63, 64, 65, 66, 67, 68, 69, 70, 71, 72, 73, 74, 75, 76, 77, 78, 79, 80, 81, 82, 83, 84, 85, 86, 87, 88, 89, 90, 91, 92, 93, 94, 95, 96, 97, 98, 99, 100



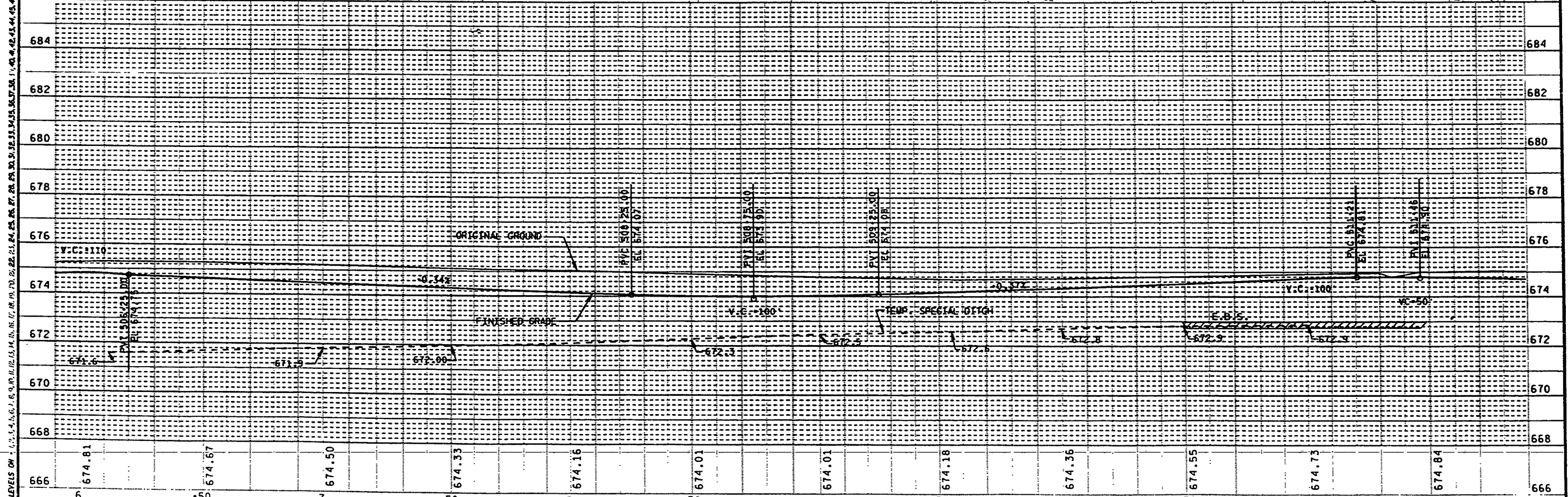
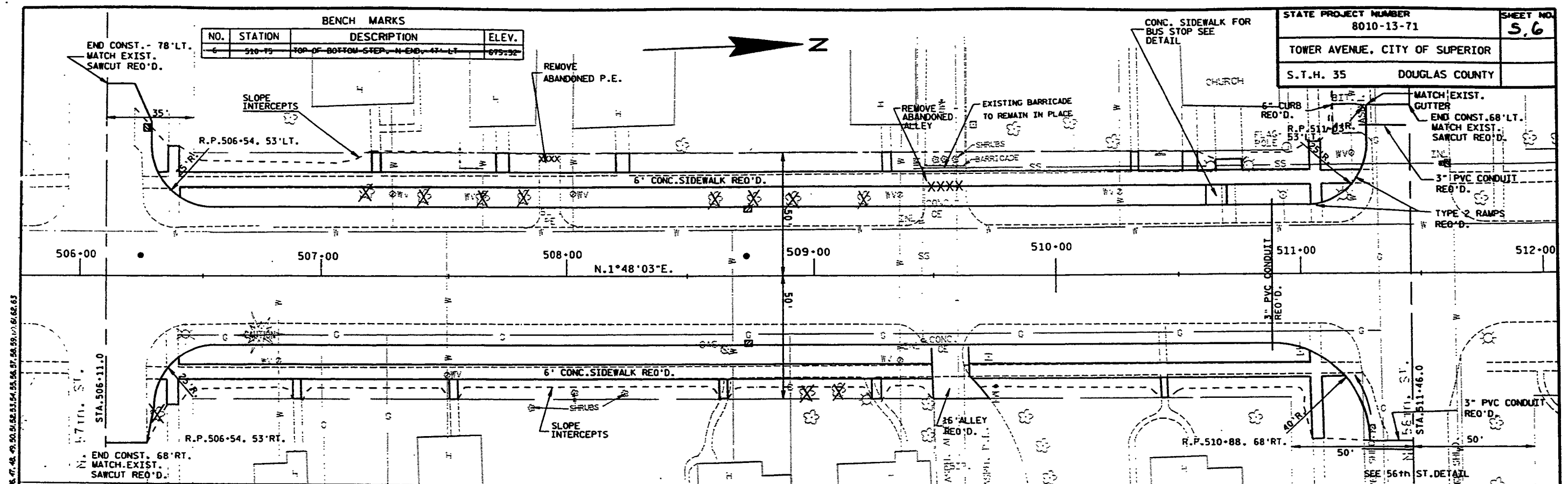
BENCH MARKS			
NO.	STATION	DESCRIPTION	ELEV.
4	502+85	SE COR. SIGN BASE, 44' LT	675.21
5	504+90	N END PUMP ISLAND, 70' LT	676.14



LEVELS ON 1' = 10' VERTICAL SCALE
 FILE NAME : D8 80101300 PLANG.DGN ORIGINATOR : DISTRICT 8
 PLOT NAME : PLANG PLOT SCALE : 1/20

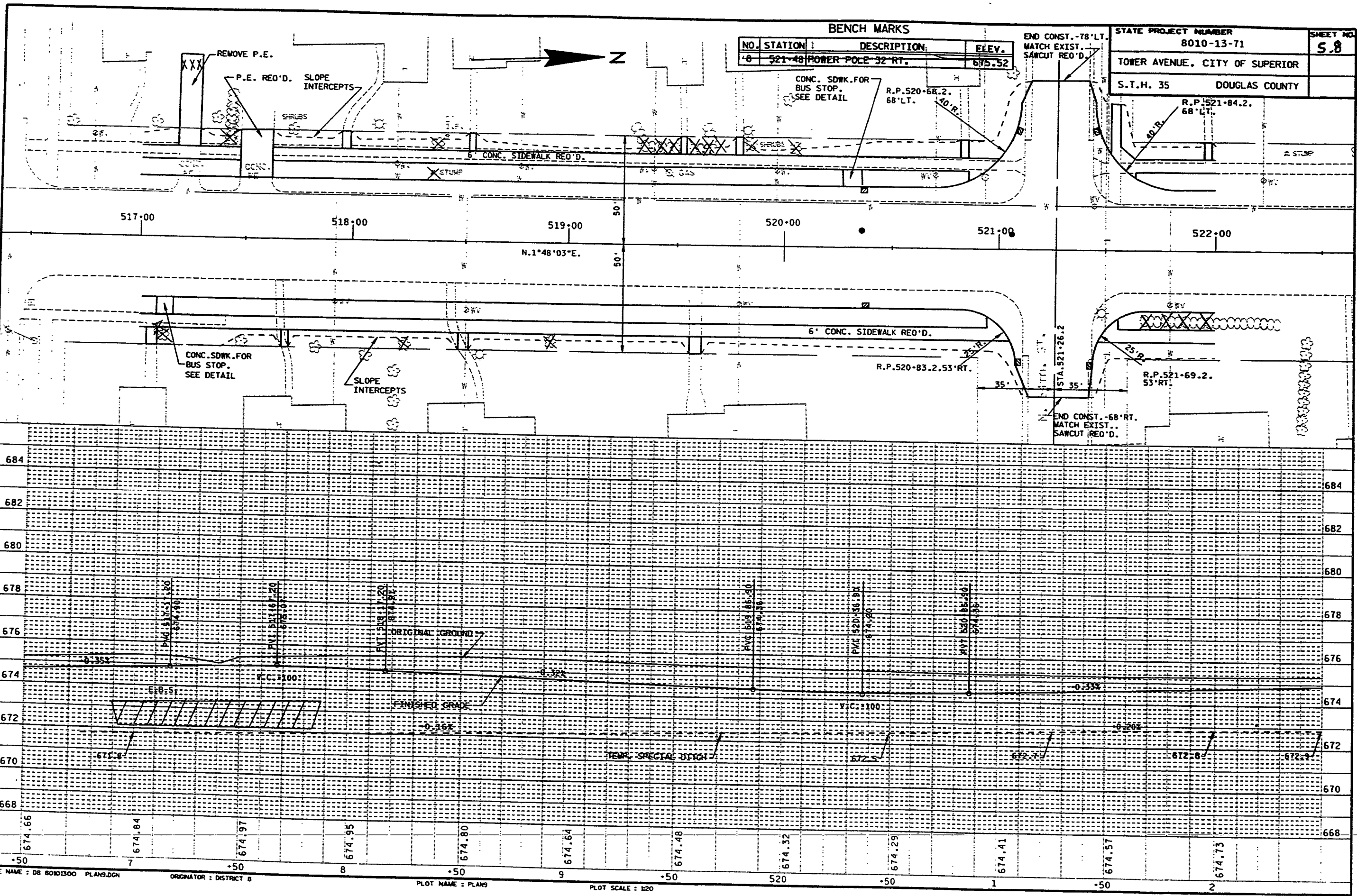
STATE PROJECT NUMBER 8010-13-71	SHEET NO. 5.6
TOWER AVENUE, CITY OF SUPERIOR	
S.T.H. 35	DOUGLAS COUNTY

BENCH MARKS			
NO.	STATION	DESCRIPTION	ELEV.
6	510+75	TOP OF BOTTOM STEP, N END, 47' LT.	675.32



FILE NAME : 08_80101300_PLANT.DGN ORIGINATOR : DSIBICI_8 PLOT NAME : PLANT PLOT SCALE : 1/20 WISDOT/CADD SHEET 41

LEVELS ON : 1 2 3 4 5 6 7 8 9 10 11 12 13 14 15 16 17 18 19 20 21 22 23 24 25 26 27 28 29 30 31 32 33 34 35 36 37 38 39 40 41 42 43 44 45 46 47 48 49 50 51 52 53 54 55 56 57 58 59 60 61 62 63



NO.	STATION	DESCRIPTION	ELEV.
8	521+48	POWER POLE 32' RT.	675.52

STATE PROJECT NUMBER	8010-13-71	SHEET NO.	5.8
TOWER AVENUE, CITY OF SUPERIOR			
S.T.H. 35	DOUGLAS COUNTY		

BENCH MARKS			
NO.	STATION	DESCRIPTION	ELEV.
9	524+85	TOP NE BOLT HYDRANT, 31' LT	677.09
10	529+10	CITY MONUMENT, 42' LT	674.48

STATE PROJECT NUMBER 8010-13-71	SHEET NO. 5.9
TOWER AVENUE, CITY OF SUPERIOR	
S.T.H. 35	DOUGLAS COUNTY

