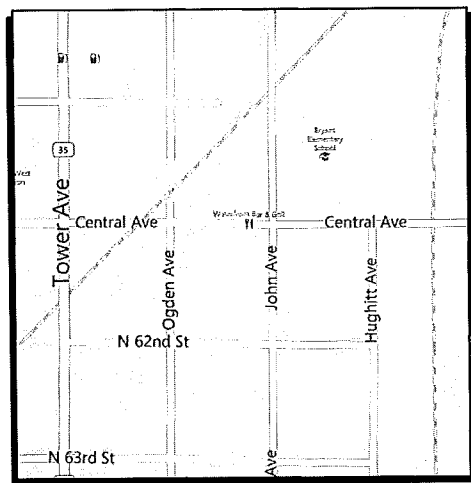
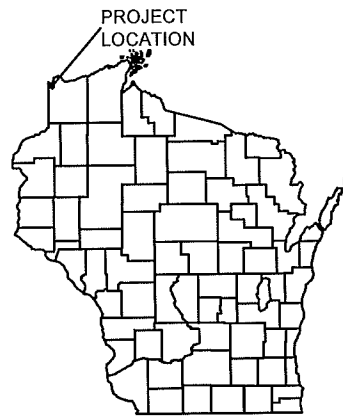


CENTRAL AVENUE RECONSTRUCTION

CITY OF SUPERIOR DOUGLAS COUNTY, WISCONSIN



LOCATION MAP
NOT TO SCALE

SHEET INDEX

G - GENERAL SHEETS	
G 1	TITLE SHEET
G 2	EROSION CONTROL DETAILS
G 3	EROSION CONTROL PLAN
G 4	SANITARY & STORM DETAILS
G 5	STREET DETAILS
G 6	TYPICAL SECTIONS
PP - PLAN PROFILE SHEETS	
PP 1-2	PLAN-PROFILE
CS - CROSS-SECTION SHEETS	
CS 1-12	CROSS-SECTIONS

LEGEND

	EXISTING WATER MAIN
	EXISTING GATE VALVE & HYDRANT
	WATER SERVICE & CURB STOP
	PROPOSED WATERMAIN, VALVE, & HYDRANT
	PROPOSED WATER SERVICE & CURB STOP
	EXISTING SANITARY SEWER & MANHOLE
	EXISTING FORCEMAIN
	EXISTING STORM SEWER & INLET
	PROPOSED STORM SEWER & INLET
	PROPOSED MANHOLE & SEWER MAIN
	BURIED ELECTRIC
	BURIED GAS & VALVE
	BURIED CABLE TELEVISION
	BURIED TELEPHONE
	BURIED FIBER OPTICS
	RAILROAD TRACKS
	EXISTING CURB & GUTTER
	PROPOSED CURB & GUTTER
	EXISTING SIDEWALK
	PROPOSED SIDEWALK
	EXISTING CULVERT PIPE
	PROPOSED CULVERT PIPE
	FENCE LINE
	DRAINAGE ARROW
	SILT FENCE
	RIGHT-OF-WAY
	BASELINE
	PROPERTY LINE
	TREE LINE
	IRON PIPE
	IRON ROD
	CONTROL POINT
	POWER POLE & GUY
	SOIL BORING
	LIGHT POLE
	PEDESTAL
	STREET SIGN
	MAILBOX
	FLAGPOLE
	EROSION BALES
	TREE - DECIDUOUS
	TREE - CONIFEROUS
	TREE TO BE REMOVED

UTILITIES

GAS, ELECTRICAL & WATER:
SUPERIOR WATER, LIGHT & POWER
AARON ANDERSON
2915 HILL AVENUE,
SUPERIOR, WI 54880
715-394-2200

SANITARY & STORM SEWER:
ENVIRONMENTAL SERVICES DIVISION OF PUBLIC WORKS
STEVE ROBERTS
51 E 1ST ST.
SUPERIOR, WI 54880
715-394-0392

TELEPHONE:
CENTURY LINK
GARY ABRAHAMSON
135 N. 21ST STREET
SUPERIOR, WI 54880
715-392-0025

CATV:
CHARTER COMMUNICATIONS
JOHN QUADE
640 GARFIELD AVENUE
DULUTH, MN 55803
218-529-8042



Toll Free (800) 242-8511
Milwaukee Area (414) 259-1181
Hearing Impaired TDD (800) 542-2289
www.DiggersHotline.com

NOTE:
UTILITY LOCATIONS SHOWN ON PLANS ARE APPROXIMATE AND CONTRACTOR
SHALL HAVE APPROPRIATE UTILITY MARK EXACT LOCATIONS PRIOR TO
CONSTRUCTION.

ACCEPTED FOR

CITY OF SUPERIOR

DATE:

DIRECTOR OF PUBLIC WORKS

PROJECT NO.: 00628003	SCALE: AS SHOWN	NO.	DATE	REVISION	BY
PROJECT DATE: ---	DRAWN BY: TPD	---	---	---	---
CHECKED BY: MDW					
PLOT DATE: 7/18/11, P:\628003\CADD\central_ave\Sheets\Plan\G1_TITLE_SHEET.dwg					

MSA
TRANSPORTATION • MUNICIPAL
DEVELOPMENT • ENVIRONMENTAL
301 West First Street, Duluth, MN 55802
218-722-3915 1-800-777-7380 Fax: 218-722-4548
Web Address: www.msa-ps.com
© MSA Professional Services, Inc.

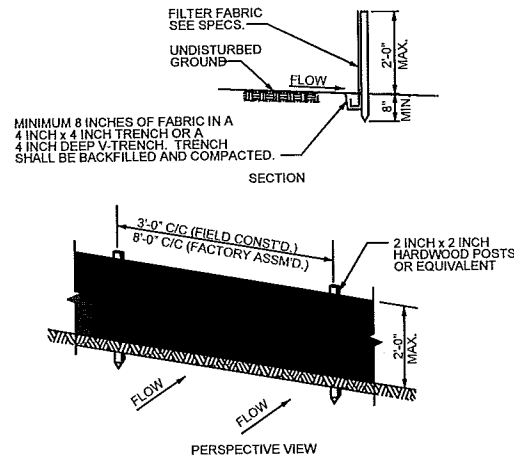
TITLE SHEET

CENTRAL AVE RECONSTRUCTION
CITY OF SUPERIOR
SUPERIOR, WISCONSIN

FILE NO.
00628003
SHEET
G 1

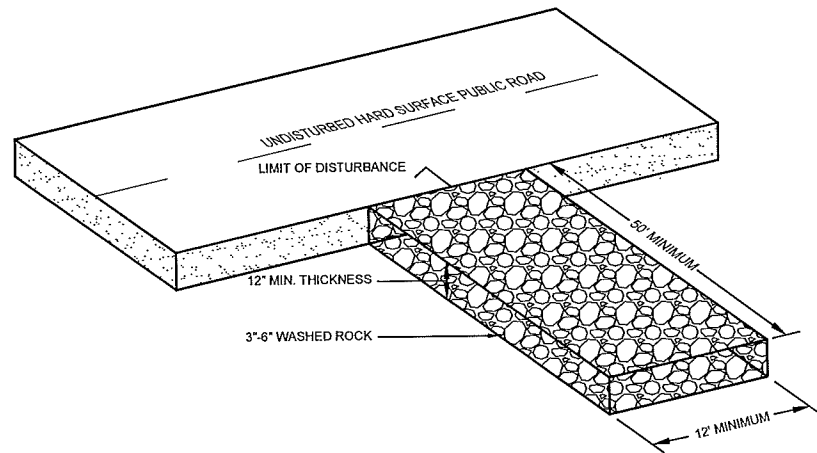
**CONSTRUCTION SITE
EROSION CONTROL REQUIREMENTS**

- 1.) SECTION NR216.46 OF WISCONSIN STATE ADMINISTRATIVE CODE IDENTIFIES REQUIREMENTS FOR CONSTRUCTION SITE AND POST-CONSTRUCTION EROSION CONTROL. IT IS THE INTENT OF THESE PLANS TO SATISFY THESE REQUIREMENTS. THE METHODS AND STRUCTURES USED TO CONTROL EROSION SHALL BE THE RESPONSIBILITY OF THE CONTRACTOR. CONTRACTOR SHALL IMPLEMENT AN APPROPRIATE MEANS OF CONTROLLING EROSION DURING SITE OPERATION AND UNTIL THE VEGETATION IS RE-ESTABLISHED. ADJUSTMENTS TO THE CONTROL SYSTEM SHALL BE MADE AS REQUIRED.
- 2.) ALL WORK SHALL BE IN ACCORDANCE WITH THE LATEST EDITION OF THE WISCONSIN DNR'S CONSERVATION PRACTICE STANDARDS. THESE STANDARDS ARE PERIODICALLY UPDATED AND IT IS THE CONTRACTOR'S RESPONSIBILITY TO OBTAIN AND REFERENCE THE MOST RECENTLY RELEASED STANDARD.
- 3.) THIS INFORMATION IS ONLY ONE PART OF THE OVERALL EROSION CONTROL REQUIREMENTS. ADDITIONAL REQUIREMENTS MAY ALSO BE SHOWN ON THE CONTRACT DRAWINGS AND IN THE ACCOMPANYING SPECIFICATIONS.
- 4.) ADDITIONAL EROSION CONTROL MEASURES, AS REQUESTED IN WRITING BY THE STATE OR LOCAL INSPECTORS, OR THE OWNER'S ENGINEER, SHALL BE INSTALLED WITHIN 24 HOURS.
- 5.) THE AREA OF EROSION EXPOSED TO THE ELEMENTS BY GRUBBING, EXCAVATION, TRENCHING, BORROW AND FILL OPERATIONS AT ANY ONE TIME SHALL BE MINIMIZED TO THE MAXIMUM EXTENT PRACTICABLE. FOR ANY DISTURBED AREA THAT REMAINS INACTIVE FOR GREATER THAN 7 WORKING DAYS, OR WHERE GRADING WORK EXTENDS BEYOND THE PERMANENT SEEDING DEADLINES, THE SITE MUST BE TREATED WITH TEMPORARY STABILIZATION MEASURES SUCH AS SOIL TREATMENT, TEMPORARY SEEDING AND/OR MULCHING. ALL DISTURBED AREAS SHALL BE TREATED WITH PERMANENT STABILIZATION MEASURES WITHIN 3 WORKING DAYS OF FINAL GRADING.
- 6.) ALL EROSION CONTROL MEASURES AND STRUCTURES SERVING THE SITE MUST BE INSPECTED AT LEAST WEEKLY OR WITHIN 24 HOURS OF THE TIME 0.5 INCHES OF RAIN HAS OCCURRED. ALL NECESSARY REPAIR AND MAINTENANCE WILL BE DONE AT THIS INSPECTION TIME.
- 7.) ALL EROSION CONTROL DEVICES AND/OR STRUCTURES SHALL BE PROPERLY INSTALLED PRIOR TO CLEARING AND GRUBBING OPERATIONS WITHIN THEIR RESPECTIVE DRAINAGE AREAS. THESE SHALL BE PROPERLY MAINTAINED FOR MAXIMUM EFFECTIVENESS UNTIL VEGETATION IS RE-ESTABLISHED.
- 8.) ALL EROSION CONTROL DEVICES SHALL BE PROPERLY INSTALLED PRIOR TO ANY SOIL DISTURBANCE.
- 9.) ANY SLOPES STEEPER THAN 3H:1V SHALL BE STAKED WITH EROSION CONTROL FABRIC UNLESS INDICATED ON THE PLAN.
- 10.) ALL WASTE AND UNUSED BUILDING MATERIALS (INCLUDING GARBAGE, DEBRIS, CLEANING WASTES, WASTEWATER, TOXIC MATERIALS, OR HAZARDOUS MATERIALS) SHALL BE PROPERLY DISPOSED OF AND NOT ALLOWED TO BE CARRIED OFF-SITE BY RUNOFF OR WIND.
- 11.) WIND EROSION SHALL BE KEPT TO A MINIMUM DURING CONSTRUCTION. WATERING, MULCH, OR A TACKING AGENT MAY BE REQUIRED TO PROTECT NEARBY RESIDENCES AND WATER RESOURCES.
- 12.) CHANNELIZED RUNOFF ENTERING THE PROJECT SITE FROM ADJOINING LANDS SHALL BE DIVERTED THROUGH NATURALLY OR ARTIFICIALLY EROSION-RESISTANT CONVEYANCES. IF CHANNELIZED RUNOFF CANNOT BE DIVERTED, SITE BEST MANAGEMENT PRACTICES MUST ACCOUNT FOR THE ADDITIONAL FLOW RATES AND EROSION POTENTIAL THAT SUCH RUNOFF PRESENTS.
- 13.) THE CONTRACTOR SHALL TAKE ALL POSSIBLE PRECAUTIONS TO PREVENT SOILS FROM BEING TRACKED ONTO PUBLIC OR PRIVATE ROADWAYS. PAVED SURFACES ADJACENT TO CONSTRUCTION SITE VEHICLE ACCESS SHALL BE SWEEPED AND/OR SCRAPPED (NOT FLUSHED) PERIODICALLY TO REMOVE SOIL, DIRT, AND/OR DUST.
- 14.) EROSION CONTROLS SHALL BE INSTALLED ON THE DOWNSTREAM SIDE OF TEMPORARY STOCKPILES. ANY SOIL STOCKPILE THAT REMAINS FOR MORE THAN 30 DAYS SHALL BE COVERED OR TREATED WITH STABILIZATION PRACTICES SUCH AS TEMPORARY OR PERMANENT SEEDING AND MULCHING. ALL STOCK PILES SHALL BE PLACED AT LEAST 75 FEET FROM STREAMS OR WETLANDS.
- 15.) ADDITIONAL EROSION CONTROL FOR UTILITY CONSTRUCTION (STORM SEWER, SANITARY SEWER, WATER MAIN, ETC.) SHALL INCLUDE THE FOLLOWING:
 - a. PLACE EXCAVATED TRENCH MATERIAL ON THE HIGH SIDE OF THE TRENCH.
 - b. BACKFILL, COMPACT, AND STABILIZE THE TRENCH IMMEDIATELY AFTER PIPE CONSTRUCTION.
 - c. DISCHARGE OF TRENCH WATER OR DEWATERING EFFLUENT MUST BE PROPERLY TREATED TO REMOVE SEDIMENT IN ACCORDANCE WITH THE WDNR CONSERVATION PRACTICE STANDARD 1061 - DEWATERING OR A SUBSEQUENT WDNR DEWATERING STANDARD PRIOR TO DISCHARGE INTO A STORM SEWER, DITCH, DRAINAGEWAY, OR WETLAND OR LAKE.
- 16.) ALL DRAINAGE CULVERTS, STORM DRAIN INLETS, MANHOLES, OR ANY OTHER EXISTING STRUCTURES THAT COULD BE DAMAGED BY SEDIMENTATION SHALL BE PROTECTED ACCORDING TO THE VARIOUS METHODS PROVIDED IN THE PRINTED CONSERVATION PRACTICE STANDARDS.
- 17.) ANY SOIL EROSION THAT OCCURS AFTER FINAL GRADING AND/OR STABILIZATION MUST BE REPAIRED AND THE STABILIZATION WORK REDONE.
- 18.) DURING THE FIRST SIX WEEKS AFTER INITIAL STABILIZATION OF A DISTURBED WATERING OF ALL NEWLY SEEDED AND MULCHED AREAS SHALL BE PROVIDED WHENEVER 7 DAYS ELAPSE WITHOUT A RAIN EVENT.
- 19.) WHEN THE DISTURBED AREA HAS BEEN STABILIZED BY PERMANENT VEGETATION OR OTHER MEANS, TEMPORARY BMP'S SUCH AS SILT FENCES, STRAW BALES, AND SEDIMENT TRAPS SHALL BE REMOVED AND THESE AREAS STABILIZED.
- 20.) ALL TEMPORARY BEST MANAGEMENT PRACTICES SHALL BE MAINTAINED UNTIL THE SITE IS STABILIZED.
- 21.) ALL DISTURBED AREAS SHALL BE PERMANENTLY STABILIZED WITH SEED AND MULCH UNLESS OTHERWISE SPECIFIED. A MINIMUM OF FOUR INCHES OF TOPSOIL SHALL BE APPLIED TO ALL AREAS TO BE SEEDED OR SODDED.

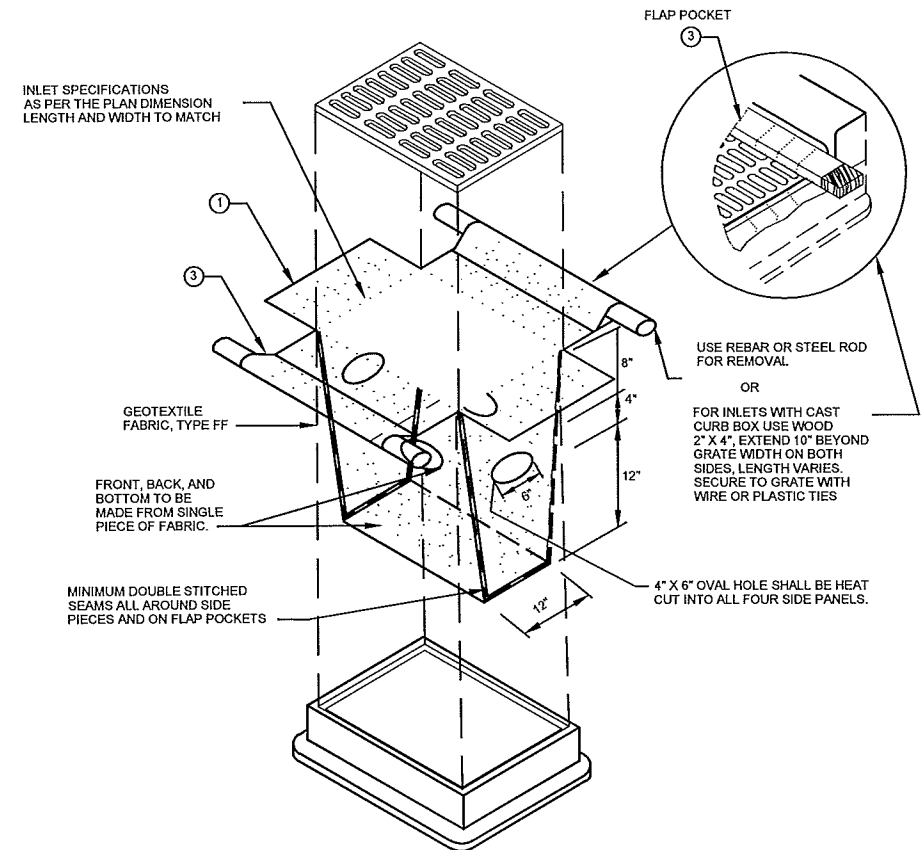


- GENERAL NOTES:**
1. ENDS OF FENCE SHALL BE TURNED UPSLOPE 1 TO 2 FEET IN ELEVATION TO PREVENT FLANKING.
 2. STAPLE FABRIC WITH 1/2 INCH (MINIMUM) STAPLES TO THE UPSLOPE SIDE OF THE POSTS.
 3. WHEN TWO SECTIONS OF FILTER FABRIC ADJOIN EACH OTHER THEY SHALL BE OVERLAPPED BY SIX INCHES AND FOLDED.

**TYPICAL SILT FENCE INSTALLATION
AT SITE PERIMETER DETAIL**
NTS



VEHICLE TRACKING PAD
NTS



INSTALLATION NOTES
DO NOT INSTALL INLET PROTECTION TYPE D IN INLETS SHALLOWER THAN 30", MEASURED FROM THE BOTTOM OF THE INLET TO THE TOP OF THE GRATE.

TRIM EXCESS FABRIC IN THE FLOW LINE TO WITHIN 3" OF THE GRATE.

THE INSTALLED BAG SHALL HAVE A MINIMUM SIDE CLEARANCE, BETWEEN THE INLET WALLS AND THE BAG, MEASURED AT THE BOTTOM OF THE OVERFLOW HOLES, OF 3". WHERE NECESSARY THE CONTRACTOR SHALL CINCH THE BAG, USING PLASTIC ZIP TIES, TO ACHIEVE THE 3" CLEARANCE. THE TIES SHALL BE PLACED AT A MAXIMUM OF 4" FROM THE BOTTOM OF THE BAG.

INLET PROTECTION, TYPE D
NTS

(CAN BE INSTALLED IN ANY INLET TYPE WITH OR WITHOUT A CURB BOX AS PER NOTE)

PROJECT NO: 00628003	SCALE: AS SHOWN	NO.	DATE	REVISION	BY
PROJECT DATE: ---	DRAWN BY: DRAWN BY	---	---	---	---
CHECKED BY: CHECKER					

MSA
TRANSPORTATION • MUNICIPAL
DEVELOPMENT • ENVIRONMENTAL
301 West First Street, Duluth, MN 55802
218-722-3915 1-800-777-7380 Fax: 218-722-4548
Web Address: www.msa-ps.com
© MSA Professional Services, Inc.



EROSION CONTROL DETAILS

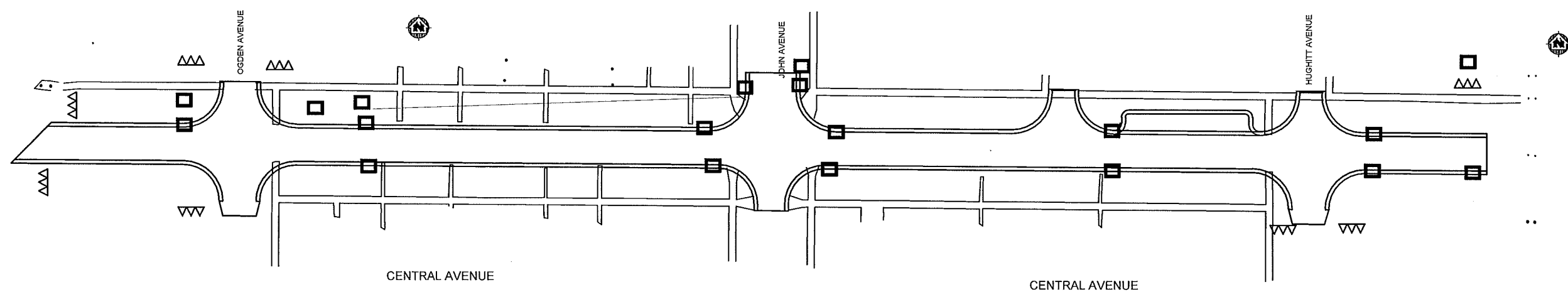
CENTRAL AVE RECONSTRUCTION
CITY OF SUPERIOR
SUPERIOR, WISCONSIN

FILE NO
00628003
SHEET
G 2



LEGEND

- INLET PROTECTION 
- SILT FENCE 



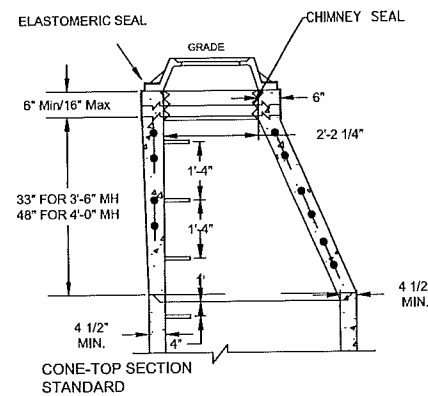
MSA
 TRANSPORTATION • MUNICIPAL
 DEVELOPMENT • ENVIRONMENTAL
 301 West First Street, Duluth, MN 55802
 218-722-3915 1-800-777-7380 Fax: 218-722-4548
 Web Address: www.msa-ps.com
 © MSA Professional Services, Inc.

EROSION CONTROL PLAN

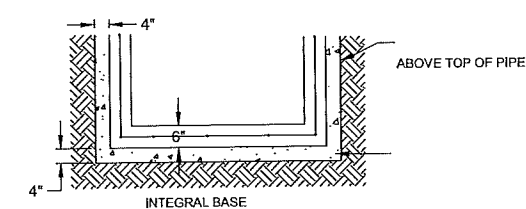
CENTRAL AVE RECONSTRUCTION
 CITY OF SUPERIOR
 SUPERIOR, WISCONSIN

FILE NO
 00628003
 SHEET
 G 3

PRECAST MANHOLE DETAIL



TYPE I FRAME/CHIMNEY JOINT REQUIRED ON ALL SANITARY MANHOLES UNLESS OTHERWISE SPECIFIED. ELASTOMERIC WATERPROOFING SEALER APPLIED TO EXTERIOR AND INTERIOR CHIMNEY SEAL.



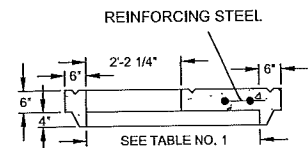
FLAT TOP SLAB MAY ONLY BE USED FOR 5'-0" AND 6'0" DIA. MANHOLES AND WITH PERMISSION OF PROJECT ENGINEER OR WHERE SHOWN ON THE PLANS.

ADJUST FRAME TO GRADE WITH BRICK OR CONCRETE RINGS OF VARIABLE THICKNESS. MAXIMUM RING HEIGHT = 6". MINIMUM RING HEIGHT = 2". CONCRETE RINGS SHALL BE REINFORCED WITH ONE LINE OF STEEL CENTERED WITHIN THE RING. WHERE NECESSARY, RINGS SHALL BE GROOVED TO RECEIVE STEP. THE CHIMNEY SHALL BE CONSTRUCTED SO THAT AS FEW ADJUSTING RINGS AS POSSIBLE SHALL BE USED TO BRING MANHOLE TO GRADE.

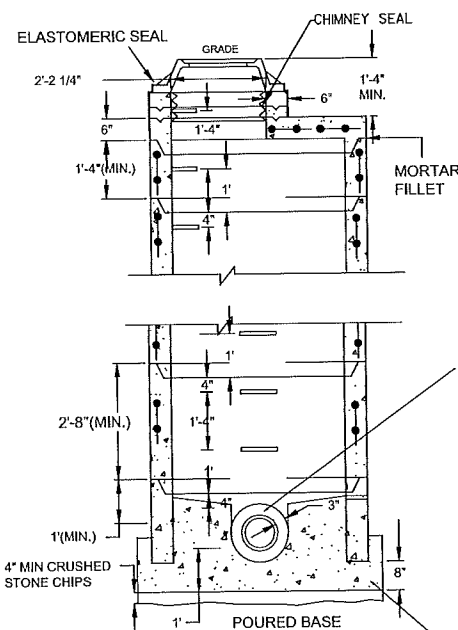
CONCRETE AND STEEL REINFORCEMENT SHALL CONFORM TO DESIGNATION C-478 REQUIREMENTS OF ASTM SPECIFICATIONS.

JOINTS SHALL BE WATERTIGHT AND SHALL BE MADE USING BUTYL RUBBER GASKETS. ALL JOINTS SHALL CONFORM TO ASTM-C443 VARIATIONS IN DIAMETER, DEFECTIVE OR DAMAGED ENDS, OR OTHER CONDITIONS WHICH, IN THE OPINION OF THE PROJECT ENGINEER, PREVENT MAKING A SATISFACTORY JOINT SHALL BE CONSIDERED CAUSE FOR REJECTION.

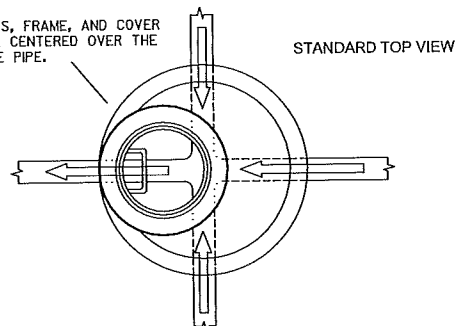
AREA OF CIRCUMFERENTIAL STEEL = 0.12 SQ INCH PER LINEAL FOOT.



FLAT TOP SLAB (WHERE SPECIFIED)



THE STEPS, FRAME, AND COVER SHALL BE CENTERED OVER THE DISCHARGE PIPE.



SPACE BETWEEN PIPE AND PRECAST MANHOLE WALL TO BE FILLED WITH BRICK MORTARED IN PLACE EXCEPT THAT AN APPROVED FLEXIBLE WATERTIGHT PIPE TO MANHOLE SEAL IS REQUIRED FOR ALL FLEXIBLE SANITARY SEWER CONNECTIONS. THE ANNULAR SPACE BETWEEN THE PIPE AND MANHOLE WALL SHALL BE FILLED WITH FLEXIBLE BUTYL RUBBER GASKET MATERIAL BELOW SURFACE OF BENCH SPRINGLINE.

4" MIN. CRUSHED STONE CHIPS UNDER CONCRETE BASE.

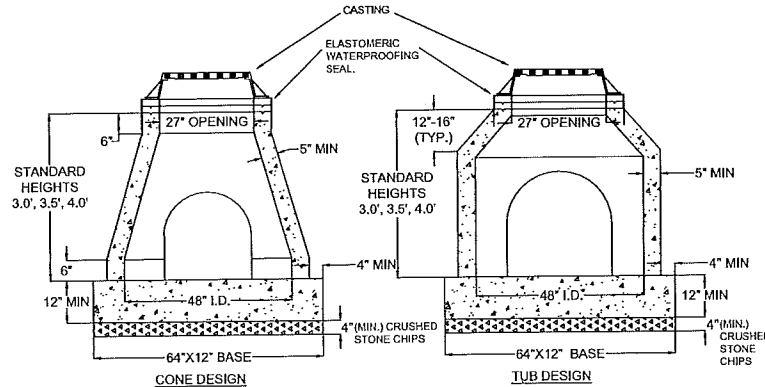
PRECAST BASE RISER SECTION WITH A SEPARATE PRECAST BASE SLAB SHALL NOT BE CONSIDERED GENERALLY ACCEPTABLE UNDER THIS SPECIFICATION.

THE FLOW CHANNEL THROUGH MANHOLES SHALL BE MADE TO CONFORM TO THE SHAPE AND SLOPE OF THE SEWERS AND SHALL EXTEND VERTICALLY FROM THE SPRINGLINE TO THE CROWN OF THE DISCHARGE PIPE.

BENCH SLOPE: STORM MANHOLE 1" PER FOOT
SANITARY MANHOLE 2" PER FOOT
CLASS "D" CONCRETE 12" MIN. BELOW BOTTOM OF PIPE

PIPE DIA	MANHOLE DIA	WALL THICKNESS
8" - 30"	4'-0"	5"
36"	5'-0"	6"
42"	6'-0"	7"

CATCH BASIN CONE DETAIL

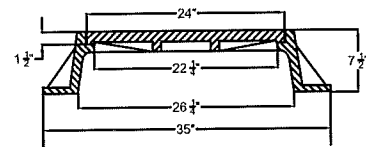


NOTE:
1. PRECAST CATCH BASINS SHALL BE MANUFACTURED, REINFORCED, AND INSTALLED IN ACCORDANCE WITH SPECIFICATIONS FOR PRECAST MANHOLES.
2. THE BASE SHALL BE INTEGRAL, FORMED AND POURED ON SITE, OR FURNISHED AS A SEPARATE PRECAST SECTION.
3. INVERTS FOR BASINS FURNISHED WITH INTEGRAL BASES MAY BE PREFORMED OR POURED IN PLACE. THE INVERT SHALL BE POURED IN PLACE FOR POURED BASES AND FOR BASINS WITH SEPARATE PRECAST BASES.

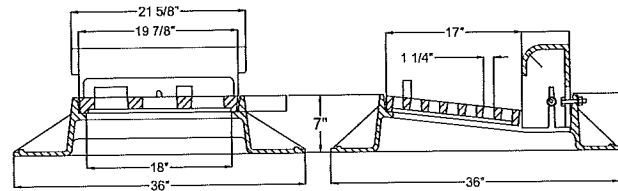
DESIGN	HEIGHT	NUMBER OF OPENINGS		
		1 HOLE	2 HOLE	3 HOLE
CONE	3.0'	15" RCP	15" RCP @ 90 °	15" RCP @ 90 °
CONE	3.5'	15" RCP	15" RCP @ 90 °	15" RCP @ 90 °
CONE	4.0'	21" RCP	18" RCP @ 90 °	15" RCP @ 90 °
TUB	3.0'	18" RCP	18" RCP @ 90 °	18" RCP @ 90 °
TUB	3.5'	21" RCP	18" RCP @ 90 °	18" RCP @ 90 °
TUB	4.0'	27" RCP	18" RCP @ 90 °	18" RCP @ 90 °

CASTING DIMENSIONS

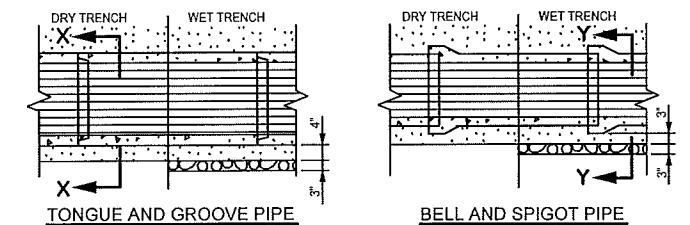
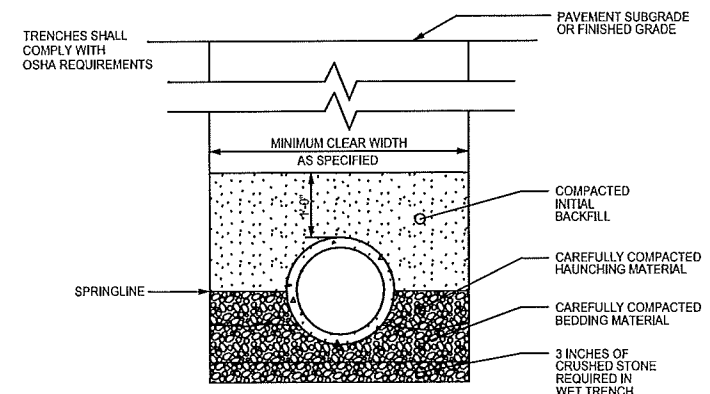
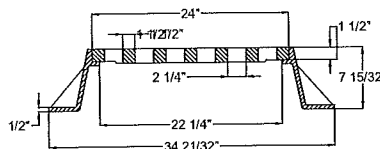
MANHOLE CASTING DIMENSIONS



TYPICAL CURB INLET CASTING DIMENSIONS FOR CIRCULAR STRUCTURES (TYPE 3)



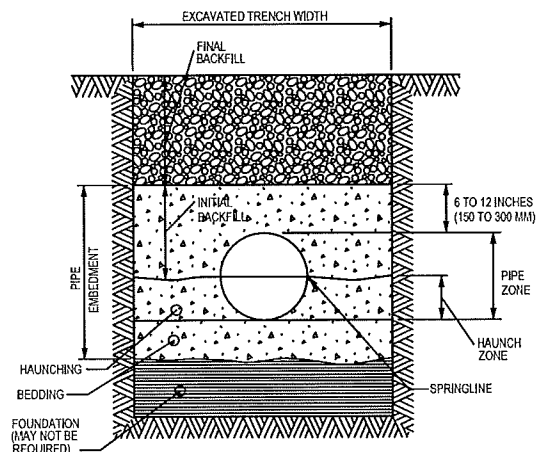
CASTING DIMENSIONS FOR GRATED MANHOLE COVERS AND CIRCULAR INLETS IN NON-CURB INSTALLATIONS (TYPE 1)



GENERAL NOTES:
1. BEDDING AND HAUNCHING MATERIAL SHALL BE WELL-GRADED 3/4 TO 1/4 INCH CRUSHED STONE OR OTHER NON-COHESIVE MATERIAL NOT SUBJECT TO MIGRATION AND FREE OF DEBRIS, ORGANIC MATERIAL, AND LARGE STONES.
2. BEDDING MATERIAL TO BE PLACED BEFORE SETTING PIPE, 4 INCH MINIMUM UNDER BARREL WITH 3 INCH MINIMUM UNDER BELL.
3. INITIAL BACKFILL SHALL BE DENSELY COMPACTED, NON-COHESIVE FINELY DIVIDED MATERIAL FREE OF DEBRIS, ORGANIC MATERIAL, AND LARGE STONES.
4. IN ROCK OR OTHER INCOMPRESSIBLE MATERIALS, THE TRENCH SHALL BE OVEREXCAVATED A MINIMUM OF 6-INCHES AND REFILLED WITH GRANULAR MATERIAL.

CLASS "B" EMBEDMENT FOR RIGID PIPE DETAIL

SCALE: NONE



GENERAL NOTES:
1. DETAILS OF CONSTRUCTION NOT SHOWN ON THIS DRAWING SHALL CONFORM TO ASTM D2321.
2. CLASS II EMBEDMENT MATERIAL SHALL BE CLEAN, COARSE-GRAINED SOILS WITH LITTLE TO NO FINES. NO PARTICLES LARGER THAN 1/2-INCHES SHALL BE USED IN THE PIPE EMBEDMENT.
3. WHERE HYDRAULIC GRADIENT EXISTS USE A WELL-GRADED MIXTURE TO MINIMIZE MIGRATION OF FINES FROM ADJACENT SOIL.
4. CLASS II MATERIAL IS SUITABLE AS A FOUNDATION AND FOR REPLACING OVER-EXCAVATED AND UNSTABLE TRENCH BOTTOM. INSTALL AND COMPACT IN 6-INCH MAXIMUM LAYERS.
5. INSTALL AND COMPACT BEDDING IN 6-INCH MAXIMUM LAYERS. LEVEL FINAL GRADE BY HAND. MINIMUM DEPTH 4 INCH (6 INCH IN ROCK CUTS.)
6. INSTALL AND COMPACT HAUNCHING IN 6-INCH MAXIMUM LAYERS. WORK IN AROUND PIPE BY HAND TO PROVIDE UNIFORM SUPPORT.
7. INSTALL AND COMPACT INITIAL BACKFILL TO A MINIMUM OF 6 INCH ABOVE PIPE CROWN.
8. EMBEDMENT COMPACTION: MINIMUM DENSITY 85% STANDARD PROCTOR. USE HAND TAMPERS OR VIBRATORY COMPACTORS.

CLASS II - FLEXIBLE PIPE EMBEDMENT DETAIL

SCALE: NONE

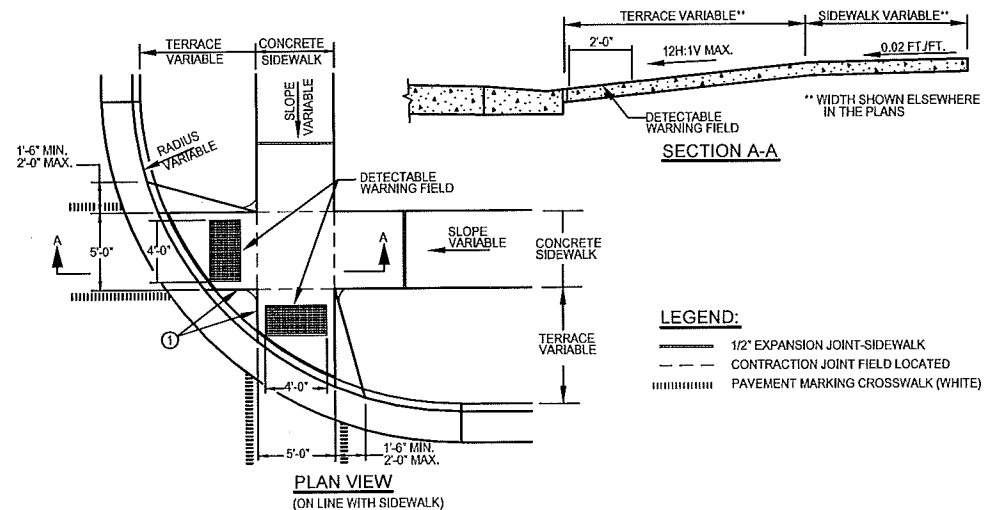
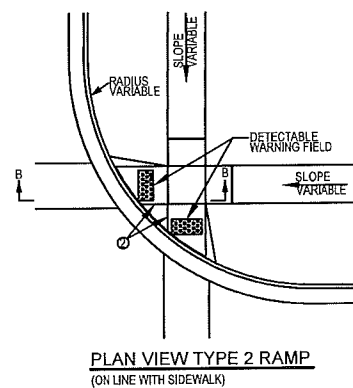
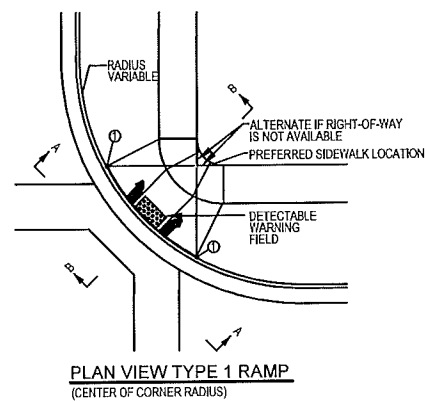
PROJECT NO.	SCALE	NO.	DATE	REVISION	BY
00628003	AS SHOWN				
CHECKED BY:	CHECKER				

MSA
TRANSPORTATION • MUNICIPAL
DEVELOPMENT • ENVIRONMENTAL
301 West First Street • Duluth, MN 55802
218-722-3915 1-800-777-7380 Fax: 218-722-4548
Web Address: www.msa-ps.com
© MSA Professional Services, Inc.

SANITARY & STORM DETAILS

CENTRAL AVE RECONSTRUCTION
CITY OF SUPERIOR
SUPERIOR, WISCONSIN

FILE NO.
00628003
SHEET
G 4



LEGEND:
 --- 1/2" EXPANSION JOINT-SIDEWALK
 - - - CONTRACTION JOINT FIELD LOCATED
 ▨ PAVEMENT MARKING CROSSWALK (WHITE)

NOTE: MATERIALS AND METHOD OF CONSTRUCTION FOR TRUNCATED DOMES SHALL BE SPECIFIED IN SPECIAL PROVISIONS OR AS REQUIRED BY THE CITY ENGINEER.

GENERAL NOTES:
 TYPE 2-A RAMP SHALL BE USED IN NEW DEVELOPMENTS UNLESS OTHERWISE APPROVED BY CITY ENGINEER.

DETAILS OF CONSTRUCTION, MATERIALS AND WORKMANSHIP NOT SHOWN ON THIS DRAWING SHALL CONFORM TO THE PERTINENT REQUIREMENTS OF THE STANDARD SPECIFICATIONS AND THE APPLICABLE SPECIAL PROVISIONS.

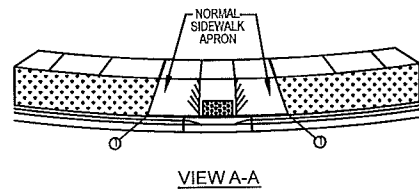
RAMP SHALL BE BUILT AT 12H:1V OR FLATTER. WHEN NECESSARY, THE SIDEWALK ELEVATION MAY BE LOWERED TO MEET THE HIGH POINT ON THE RAMP.

CURB RAMP DETECTABLE WARNING FIELD MATERIALS AND DEVICES SHALL BE APPROVED BY THE CITY ENGINEER. THE COLOR OF THE DETECTABLE WARNING FIELD SHALL BE SAFETY YELLOW.

SURFACE TEXTURE OF THE RAMP SHALL BE OBTAINED BY COARSE BROOMING TRANSVERSE TO THE SLOPE OF THE RAMP.

① THIS POINT IS AN EXTENSION OF OUTSIDE EDGE OF APPROACHING SIDEWALK WHERE IT MEETS THE BACK OF CONCRETE CURB.

② WHEN THIS DISTANCE IS LESS THAN 6'-0" IT MAY BE DIFFICULT TO ACHIEVE A 12H:1V SLOPE, OR FLATTER, ON THE RAMP. REDUCE CURB HEIGHT IN TRIANGLE AREA TO ACHIEVE 12H:1V SLOPE, OR FLATTER, ON RAMP. 2" MINIMUM CURB HEIGHT.



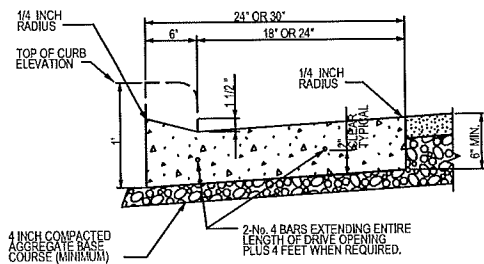
VIEW A-A

LEGEND:
 --- 1/2" EXPANSION JOINT-SIDEWALK
 - - - CONTRACTION JOINT FIELD LOCATED
 ▨ PAVEMENT MARKING CROSSWALK (WHITE)
 --- ALTERNATE LAYOUT

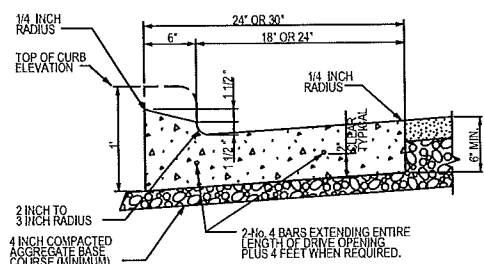
GENERAL NOTES:
 1. WHEN THIS DISTANCE IS LESS THAN 6'-0" IT MAY BE DIFFICULT TO ACHIEVE A 12H:1V SLOPE, OR FLATTER, ON THE RAMP. REDUCE CURB HEIGHT IN TRIANGLE AREA TO ACHIEVE 12H:1V SLOPE, OR FLATTER, ON RAMP. 2" MINIMUM CURB HEIGHT.
 2. DETAILS OF CONSTRUCTION, MATERIALS AND WORKMANSHIP NOT SHOWN ON THIS DRAWING SHALL CONFORM TO THE PERTINENT REQUIREMENTS OF THE SPECIFICATIONS.
 3. RAMP SHALL BE BUILT AT 12:1 SLOPE OR LESS. WHEN NECESSARY, THE SIDEWALK ELEVATION MAY BE LOWERED TO MEET THE HIGH POINT ON THE RAMP.
 4. DETECTABLE WARNING FIELD SHALL BE MEASURED AND PAID BY THE SQUARE FOOT AS 'DETECTABLE WARNING FIELD'. ALL OTHER CONCRETE SIDEWALK IN THE CURB RAMP AREA SHALL BE MEASURED AND PAID BY THE SQUARE FOOT AS CONCRETE SIDEWALK.
 5. SELECT CURB RAMP DETECTABLE WARNING FIELD MATERIALS AND DEVICES FROM THE WISCONSIN DOT APPROVED MATERIALS LIST. THE COLOR OF THE DETECTABLE WARNING FIELD SHALL CONTRAST THE CONCRETE.
 6. STRIPING, IF REQUIRED, WILL BE APPLIED BY THE OWNER UNLESS OTHERWISE SPECIFIED IN THE CONTRACT.
 7. CURB TAPERS SHALL BE BETWEEN 18 INCHES MINIMUM AND 24 INCHES MAXIMUM.
 8. LOCATION OF JOINTS MAY BE VARIED FROM THOSE SHOWN FOR BEST FIT FOR SITE CONDITIONS.

TYPE 2 CURB RAMP DETAIL WITH DETECTABLE WARNING FIELD
 NTS

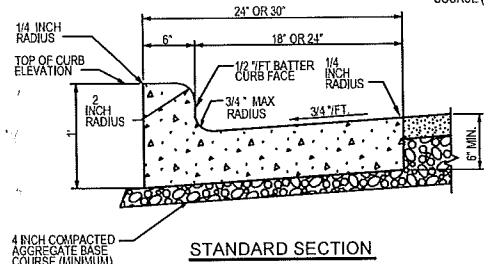
TYPE 1 CURB RAMP DETAIL
 SCALE: NONE



DRIVEWAY SECTION

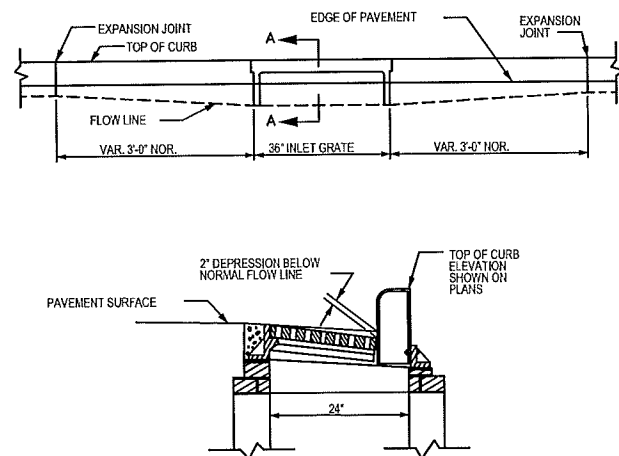


SPECIAL DRIVEWAY SECTION



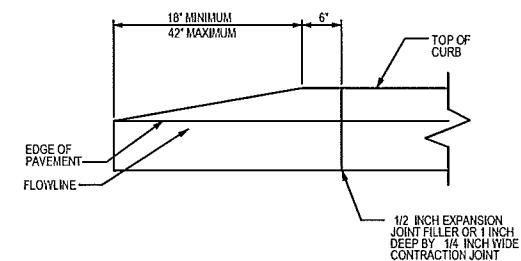
STANDARD SECTION

TYPE D CURB AND GUTTER DETAIL
 SCALE: NONE



SECTION A-A

CURB AND GUTTER AT INLETS DETAIL
 SCALE: NONE



CURB END DETAIL
 SCALE: NONE

PROJECT NO.: 00628003	SCALE: AS SHOWN	NO.	DATE	REVISION	BY
PROJECT DATE: ---	DRAWN BY: DRAWN BY	---	---	---	---
CHECKED BY: CHECKER					



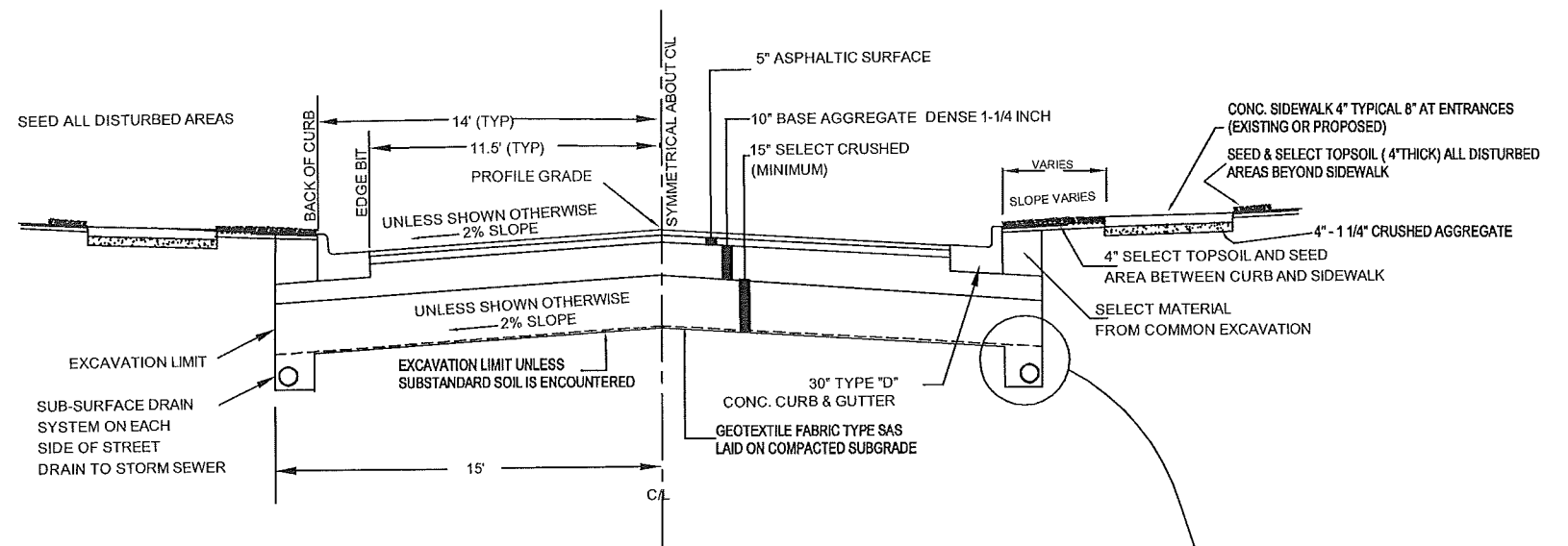
TRANSPORTATION • MUNICIPAL
 DEVELOPMENT • ENVIRONMENTAL
 301 West First Street, Duluth, MN 55802
 218-722-3915 1-800-777-7380 Fax: 218-722-4548
 Web Address: www.msa-ps.com
 © MSA Professional Services, Inc.

STREET DETAILS

CENTRAL AVE RECONSTRUCTION
 CITY OF SUPERIOR
 SUPERIOR, WISCONSIN

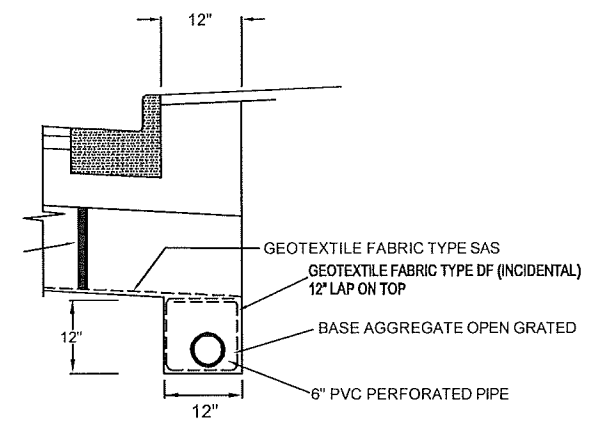
FILE NO.
 00628003
 SHEET
 G 5

ITEM NO.	ITEM DESCRIPTION	ESTIMATED QUANTITY	UNITS
204.0100	Removing Pavement	3,850	SY
204.0150	Removing Curb & Gutter	380	LF
204.0155	Removing Concrete Sidewalk	300	SY
204.02.15	Removing Catch Basins	4	Each
204.0245	Removing Storm Sewer (regardless of size)	85	LF
204.0280	Sealing Pipes	1	Each
204.xxxx	Remove & Replace Signs	None - City to do	
205.0100	Excavation Common (Plan)	3,865	CY
205.0500	Excavation Below Subgrade	150	CY
211.0500	Prepare Foundation for Base Aggregate	1	LS
305.0125	Base Aggregate Dense 1-1/4 Inch (Plan)	4,700	SY
312.0115	Select Crushed (Plan)	4,700	SY
465.0105	Asphaltic Surface	1,100	TON
521.0100-0	Culvert Pipe Corrugated Steel 12-Inch	32	LF
521.1000-1	Apron Endwalls for Culvert pipe Steel	2	Each
601.0419	Concrete Curb & Gutter 30-Inch Type D	2,200	LF
602.0405	Concrete Sidewalk 4-Inch	310	SY
602.0515	Curb Ramp Detectable Warning Field Natural Patina	18	Each
607.xxx	Connect to existing Storm Sewer	3	Each
607.0600	Storm Sewer Pipe 12-Inch	905	LF
611.1004	Catch Basins 4-FT Diameter	12	Each
611.2004	Manholes 4-FT Diameter	4	Each
611.0303	Inlet Castings - TYPE 3	12	Each
611.0301	Inlet Castings - TYPE 1	4	Each
611.3.7	Adjust existing castings	6	Each
612.0104	Underdrain 6 Inch	2,200	LF
616.2.3	Safety Fence	1	LS
619.1000	Mobilization	1	LS
628.1504	Silt Fence	120	LF
628.7020	Inlet Protection Type D	15	Each
628.7560	Tracking Pads	1	Each
630.0100	Seeding, including Topsoil & Mulch	1	LS
643.0100	Traffic Control (project)	1	LS
645.0140	Geotextile Fabric Type SAS (Plan)	4,700	SY
650.xxxx	Construction Staking	1	LS
690.0150	Sawing Asphalt	240	LF



TYPICAL 28' WIDE STREET SECTION

N.T.S.



TYPICAL UNDERDRAIN DETAIL

N.T.S.

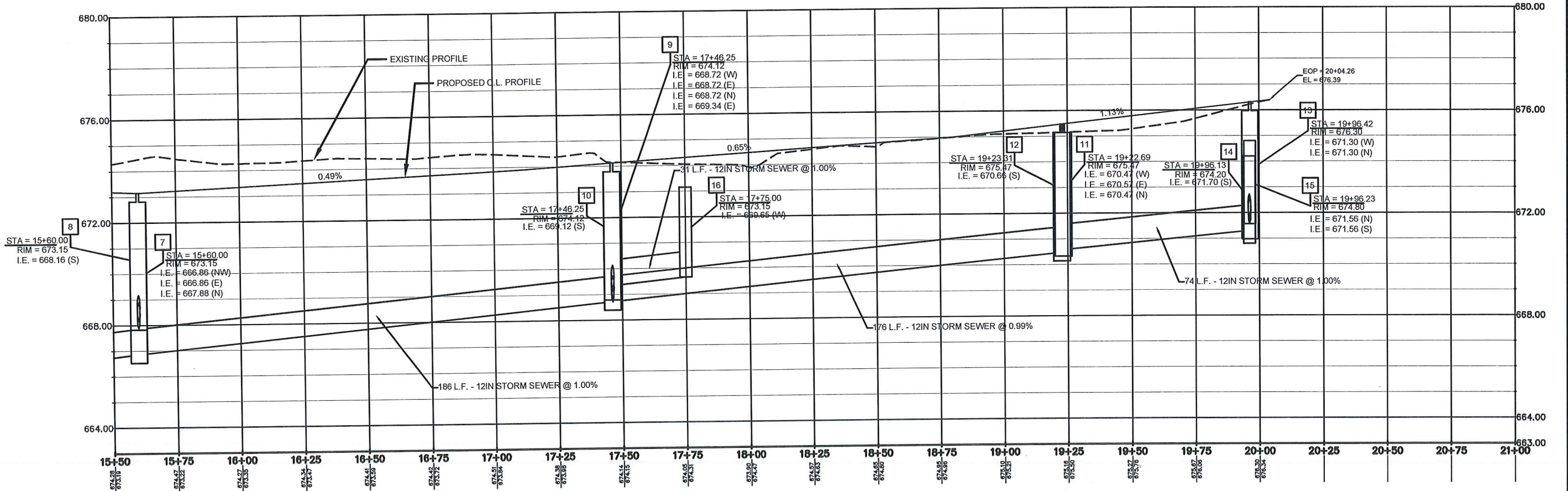
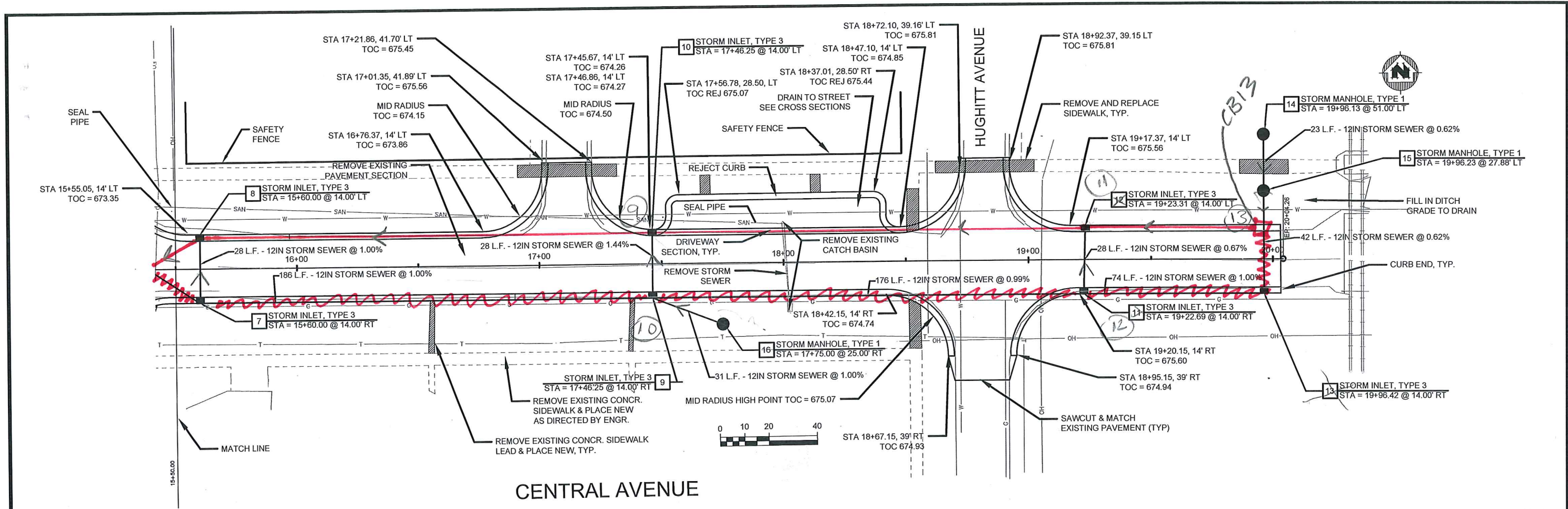
PROJECT NO: 00628003	SCALE: AS SHOWN	NO.	DATE	REVISION	BY
PROJECT DATE: ---	DRAWN BY: DRAWN BY				
CHECKED BY: CHECKER					

kref V:\CADD\Blocks\MSAL.dwg

TYPICAL STREET SECTION

CENTRAL AVE RECONSTRUCTION
CITY OF SUPERIOR
SUPERIOR, WISCONSIN

FILE NO
00628003
SHEET
G 6



PROJECT NO.: 00628003	SCALE: AS SHOWN	NO.	DATE	REVISION	BY
PROJECT DATE: ---	DRAWN BY: DRAWN BY	---	---	---	---
CHECKED BY: CHECKER					

MSA
PROFESSIONAL SERVICES

TRANSPORTATION - MUNICIPAL
DEVELOPMENT - ENVIRONMENTAL

301 West First Street, Duluth, MN 55802
218-722-3915 1-800-777-7380 Fax: 218-722-4548
Web Address: www.msa-ps.com
© MSA Professional Services, Inc.

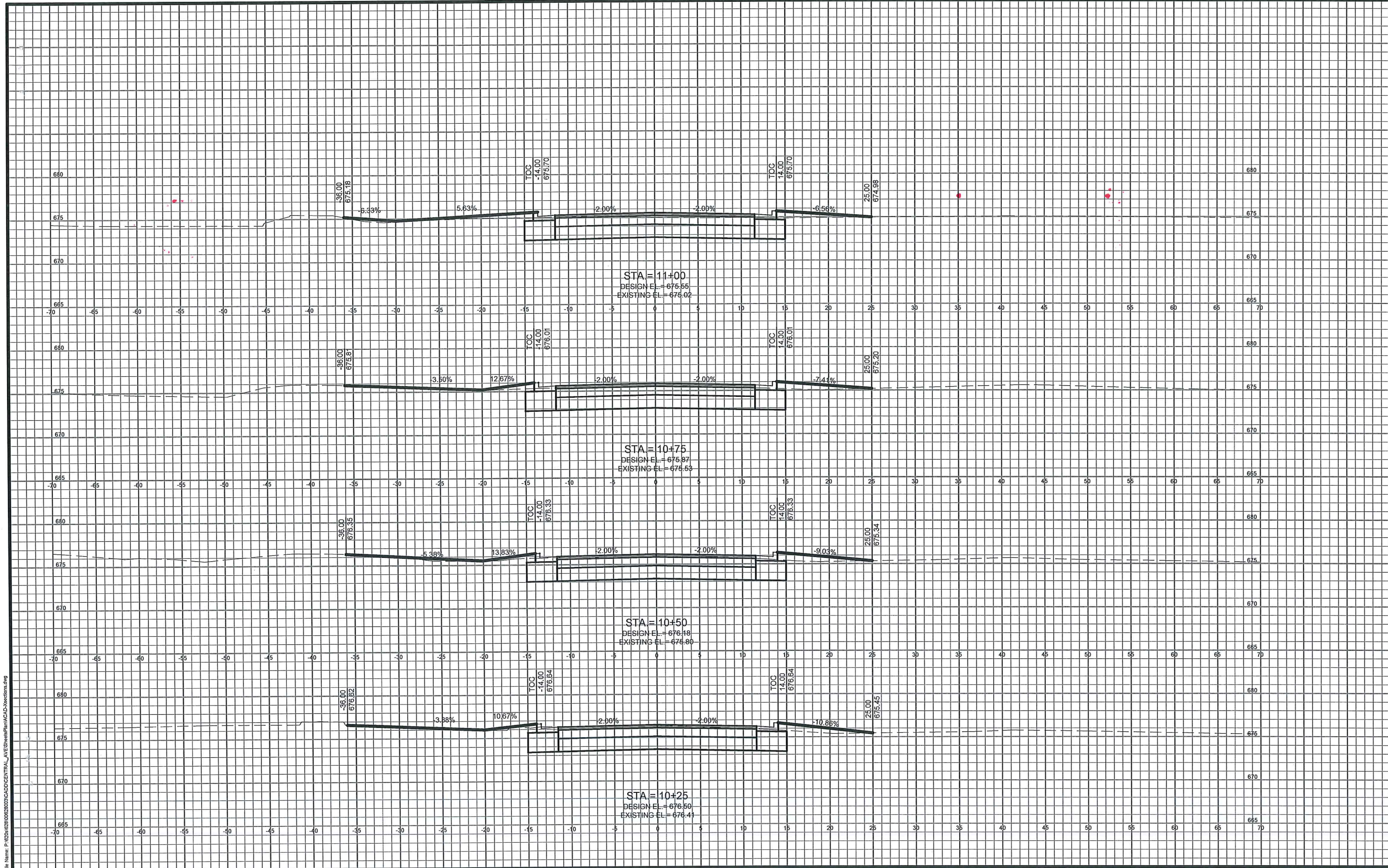
STREET PLAN PROFILE

CENTRAL AVE RECONSTRUCTION
CITY OF SUPERIOR
SUPERIOR, WISCONSIN

FILE NO.
00628003

SHEET
P-2

PLOT DATE: 5/4/12, P:\620628\00628003\CADD\central_ave\Design\All\Prof\0501010_pp.dwg



File Name: P:\2020\0628003\CADD\CENTRAL_AVE\Sheet\Plan\A04\Section.dwg

PROJECT NO: 0628003	SCALE: AS SHOWN	NO.	DATE	REVISION	BY
PROJECT DATE: 11/09/12	DRAWN BY: KS				
CHECKED BY: xxx					
PLOT DATE:					

MSA
PROFESSIONAL SERVICES

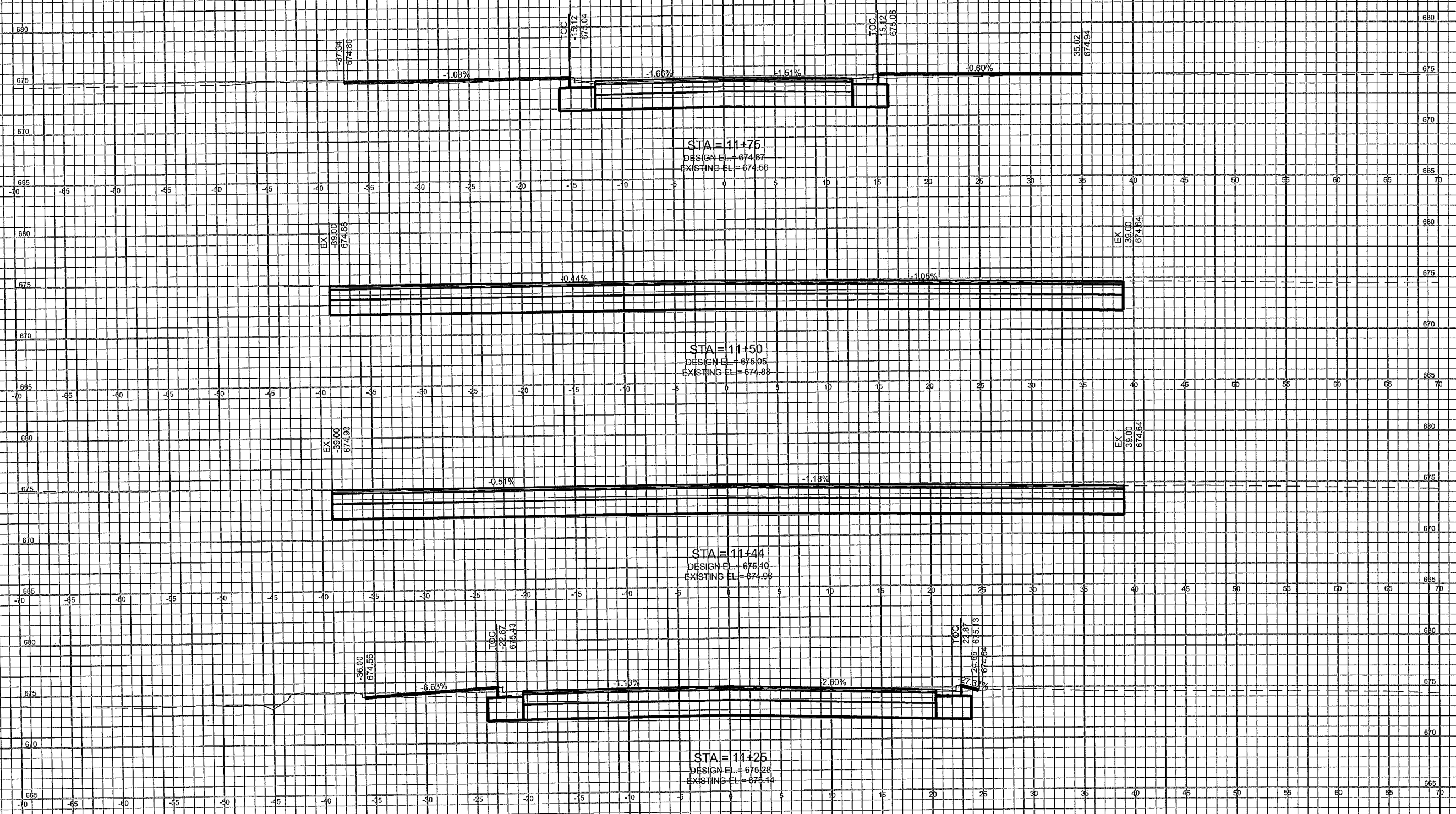
TRANSPORTATION • MUNICIPAL
DEVELOPMENT • ENVIRONMENTAL
301 West First Street, Duluth, MN 55802
218-722-3915 • 800-777-7390 Fax: 218-722-4548
Web Address: www.msa-ps.com
© MSA Professional Services, Inc.

CROSS SECTION SHEET

CENTRAL AVE RECONSTRUCTION
CITY OF SUPERIOR
SUPERIOR, WISCONSIN

FILE NO:
00628003
SHEET
CS 1

File Name: P:\2010\028003\028003\CAD\CrossSection Documents\Xsections.dwg



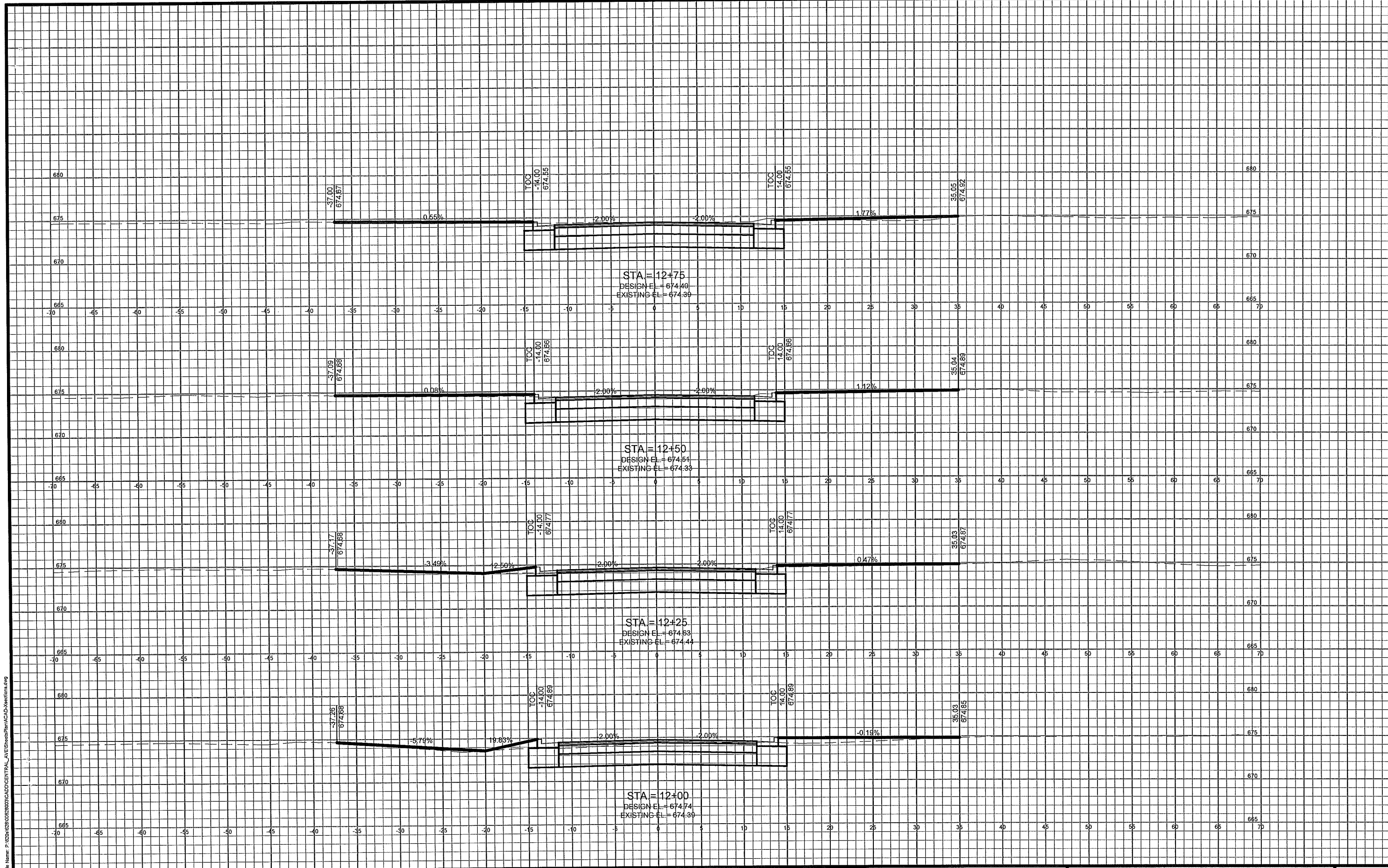
PROJECT NO: 028003	SCALE: AS SHOWN	NO.	DATE	REVISION	BY
PROJECT DATE: 03/2012	DRAWN BY: JMS				
CHECKED BY: JMS					
PLOT DATE: 03/20/2012 8:13:26 AM 1/28/2012					

MSA
 TRANSPORTATION • MUNICIPAL
 DEVELOPMENT • ENVIRONMENTAL
 301 West First Street Duluth, MN 55802
 218-722-3915 1-800-777-7380 Fax: 218-722-4548
 Web Address: www.msa-ps.com
 © MSA Professional Services, Inc.

CROSS SECTION SHEET

CENTRAL AVE RECONSTRUCTION
 CITY OF SUPERIOR
 SUPERIOR, WISCONSIN

FILE NO.
 00628003
 SHEET
 CS 2



File Name: P:\02\0628\0028003\CADD\CENTRAL_AVE\SheetPlan\MSA\CS\sections.dwg

PROJECT NO: 028003	SCALE: AS SHOWN	NO.	DATE	REVISION	BY
PROJECT DATE: 03/01/12	DRAWN BY: KS				
CHECKED BY: JXX					
PLOT DATE:					

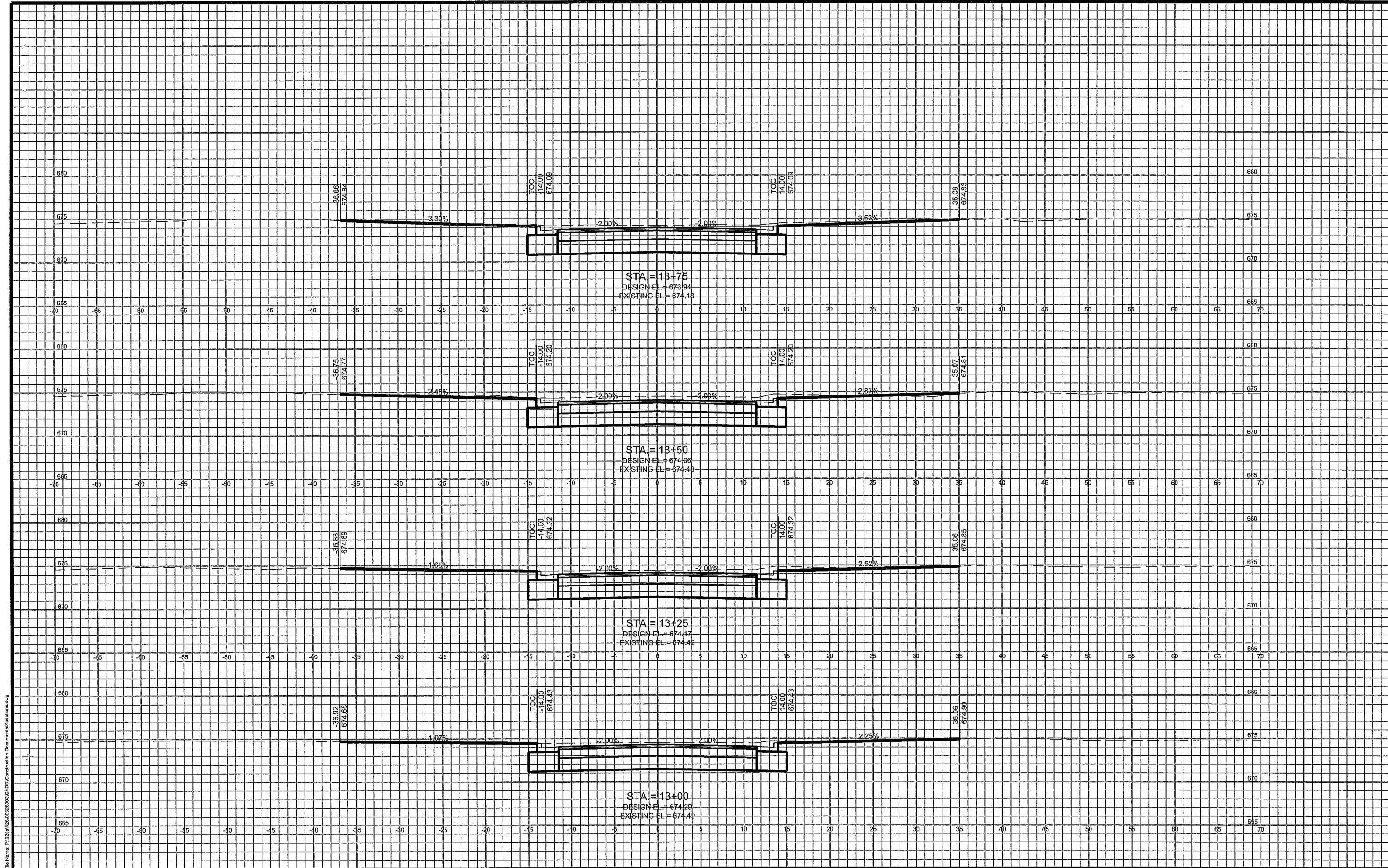
MSA
PROFESSIONAL SERVICES

TRANSPORTATION • MUNICIPAL
DEVELOPMENT • ENVIRONMENTAL
301 West First Street, Duluth, MN 55802
218-722-3915 • 800-777-7380 Fax: 218-722-4548
Web Address: www.msa-ps.com
© MSA Professional Services, Inc.

CROSS SECTION SHEET

CENTRAL AVE RECONSTRUCTION
CITY OF SUPERIOR
SUPERIOR, WISCONSIN

FILE NO
00628003
SHEET
CS 3



File Name: P:\2010\0628\0628003\CAD\Construction Documents\Sections.dwg

PROJECT NO: 0628003	SCALE: AS SHOWN	NO.	DATE	REVISION	BY
PROJECT DATE: 1/2012	DRAWN BY: JKS				
CHECKED BY: JKS					
PLOT DATE: ACAD\Sections.dwg 4/22/2013 11:37 AM					

MSA
PROFESSIONAL SERVICES

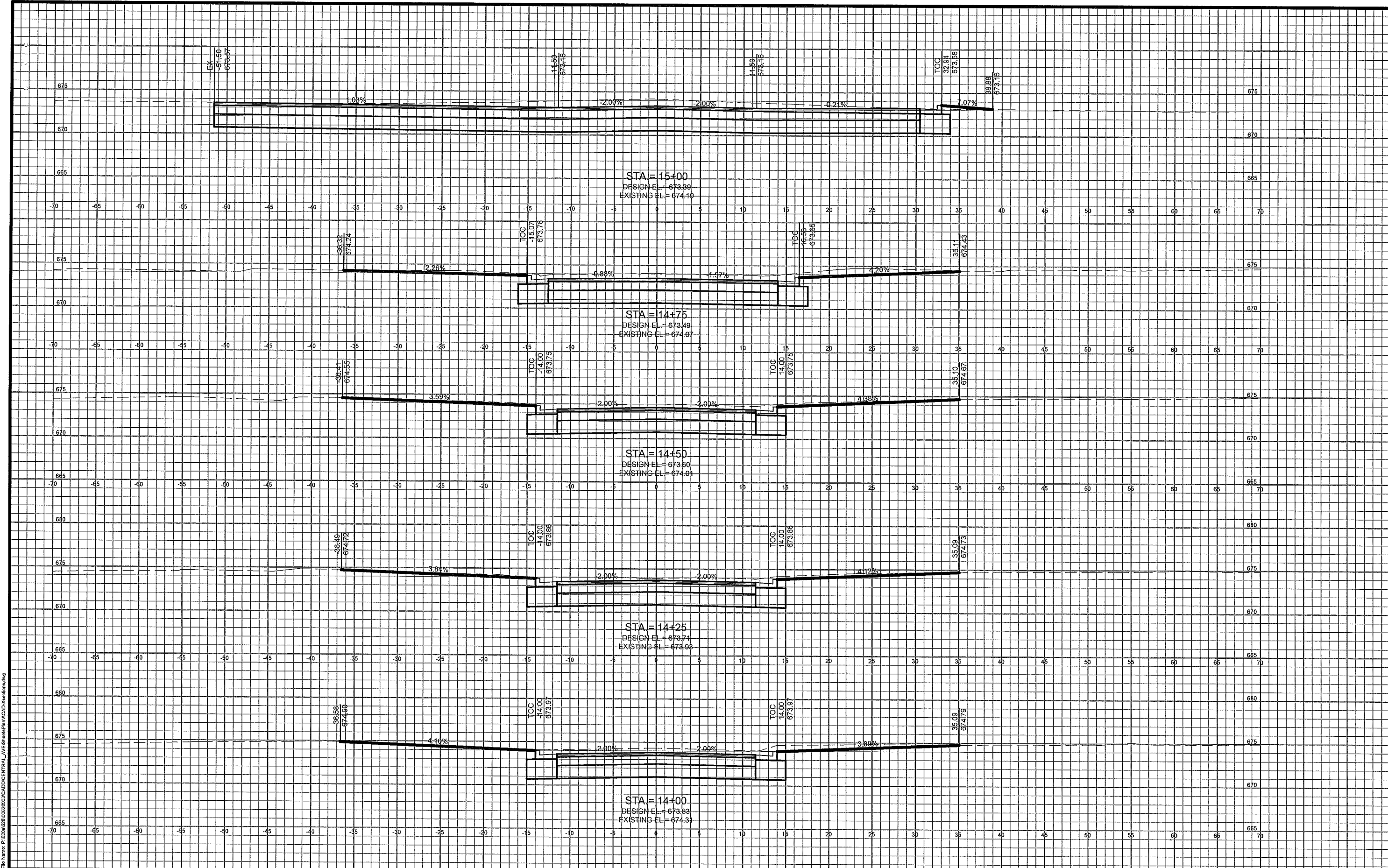
TRANSPORTATION • MUNICIPAL
DEVELOPMENT • ENVIRONMENTAL
301 West First Street, Duluth, MN 55802
218-722-9915 • 800-777-7380 Fax: 218-722-4548
Web Address: www.msa-ps.com
© MSA Professional Services, Inc.

CROSS SECTION SHEET

CENTRAL AVE RECONSTRUCTION
CITY OF SUPERIOR
SUPERIOR, WISCONSIN

FILE NO:
00628003

SHEET
CS 4



PROJECT NO: 062003	SCALE: AS SHOWN	NO.	DATE	REVISION	BY
PROJECT DATE: 11/13/2012	DRAWN BY: KS				
CHECKED BY: xxx					
PLOT DATE:					

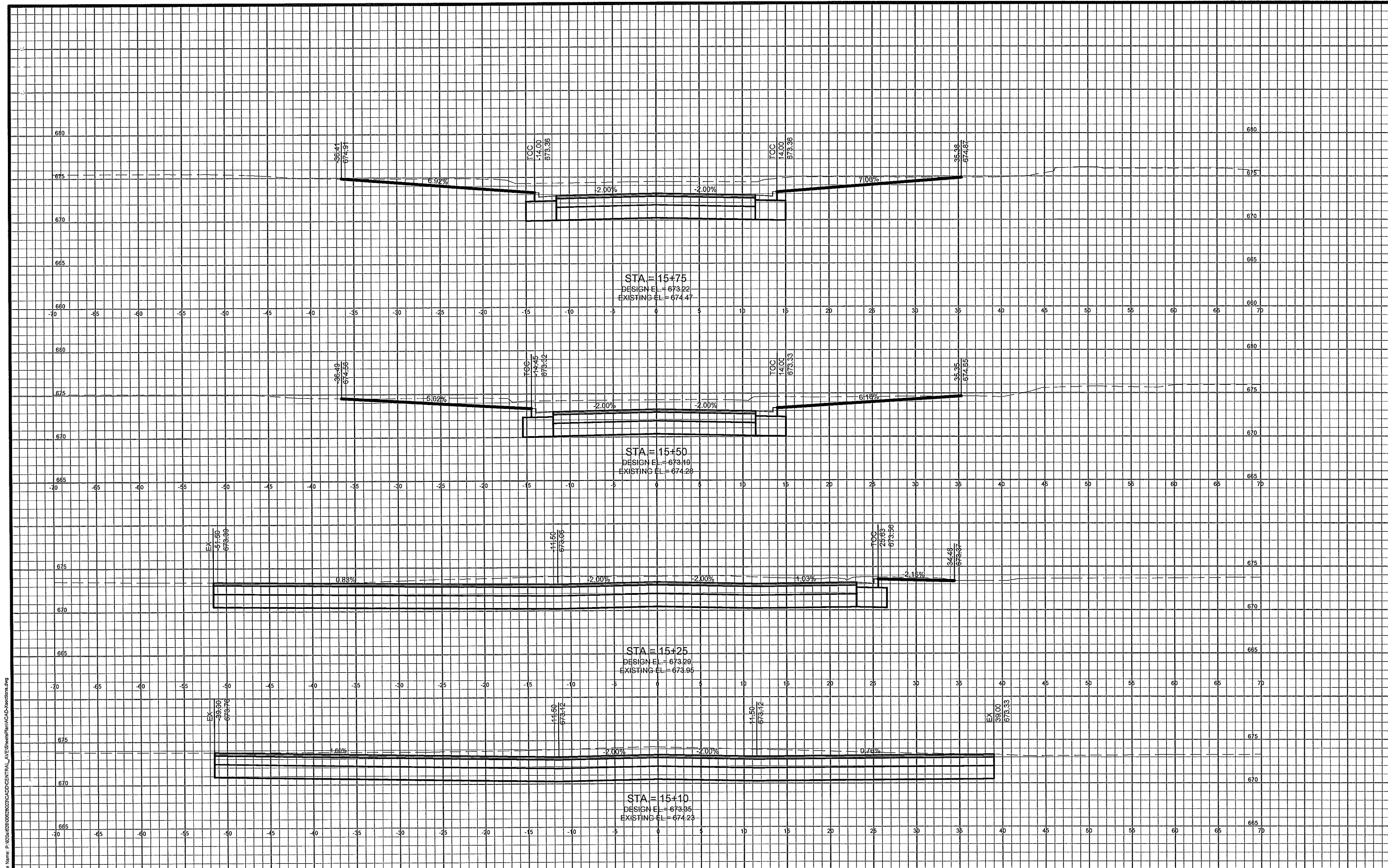
MSA
 TRANSPORTATION • MUNICIPAL
 DEVELOPMENT • ENVIRONMENTAL
 301 West First Street Duluth, MN 55802
 218-722-3915 1-800-777-7380 Fax: 218-722-4548
 Web Address: www.msa-ps.com
 © MSA Professional Services, Inc.

CROSS SECTION SHEET

CENTRAL AVE RECONSTRUCTION
 CITY OF SUPERIOR
 SUPERIOR, WISCONSIN

FILE NO:
 00628003
 SHEET
 CS 5

File Name: P:\0620\062003\CAD\CENTRAL_AVE\Sheet\Plan\CSA5\Section.dwg



File Name: P:\06\628\00628003\CAD\CENTRAL_AVE\SheetPlan\ACAD\Sections.dwg

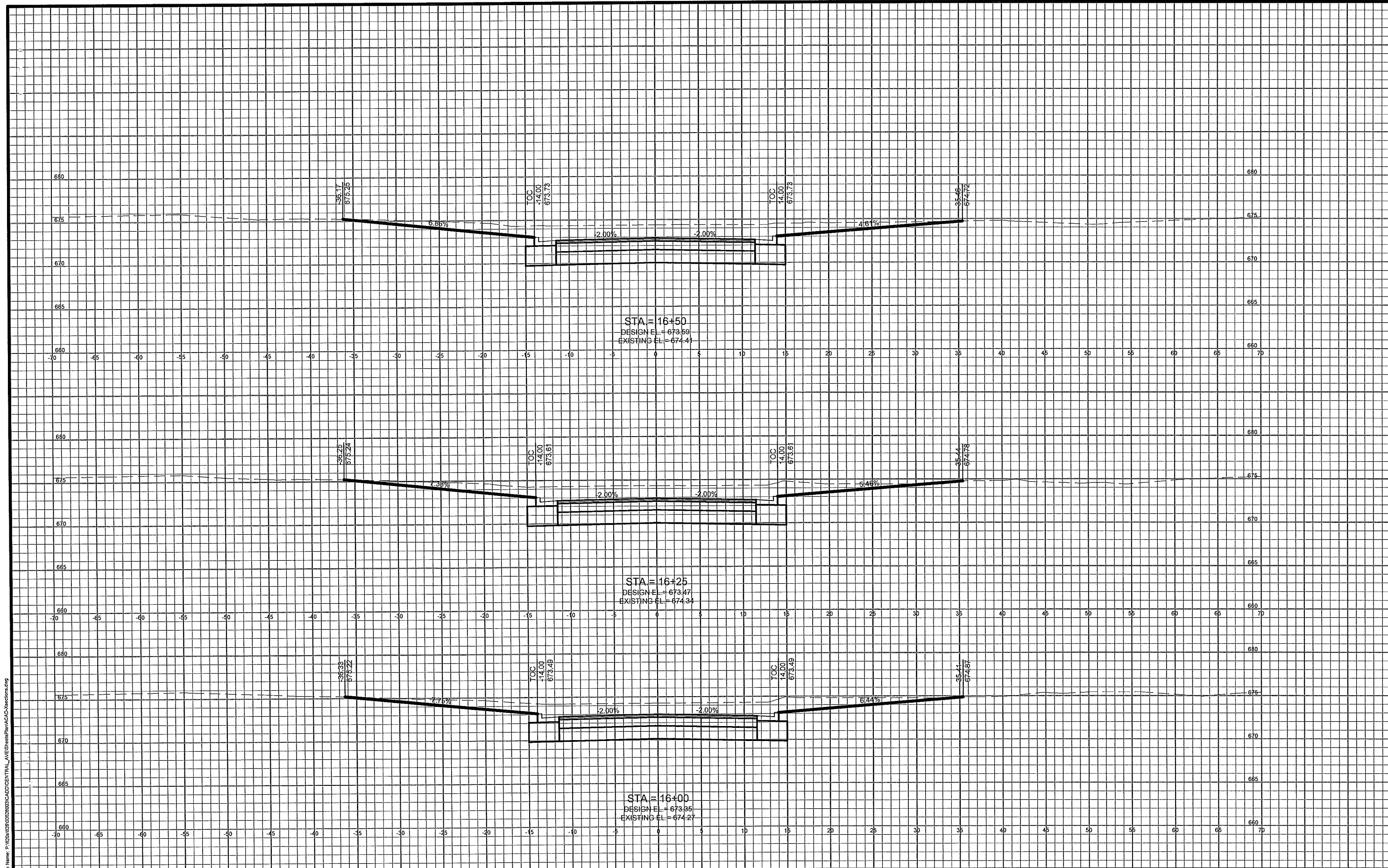
PROJECT NO: 0628003	SCALE: AS SHOWN	NO.	DATE	REVISION	BY
PROJECT DATE: 11/2012	DRAWN BY: KS				
CHECKED BY: xxx					
PLOT DATE:					

MSA
 TRANSPORTATION • MUNICIPAL
 DEVELOPMENT • ENVIRONMENTAL
 301 West First Street, Duluth, MN 55802
 218-722-3915 1-800-777-7380 Fax: 218-722-4548
 Web Address: www.msa-ps.com
 MSA Professional Services, Inc.

CROSS SECTION SHEET

CENTRAL AVE RECONSTRUCTION
 CITY OF SUPERIOR
 SUPERIOR, WISCONSIN

FILE NO
 00628003
 SHEET
 CS 6



File Name: P:\2006\28000\CAD\CENTRAL_AVE\SheetPlan\ACAD\Sections.dwg

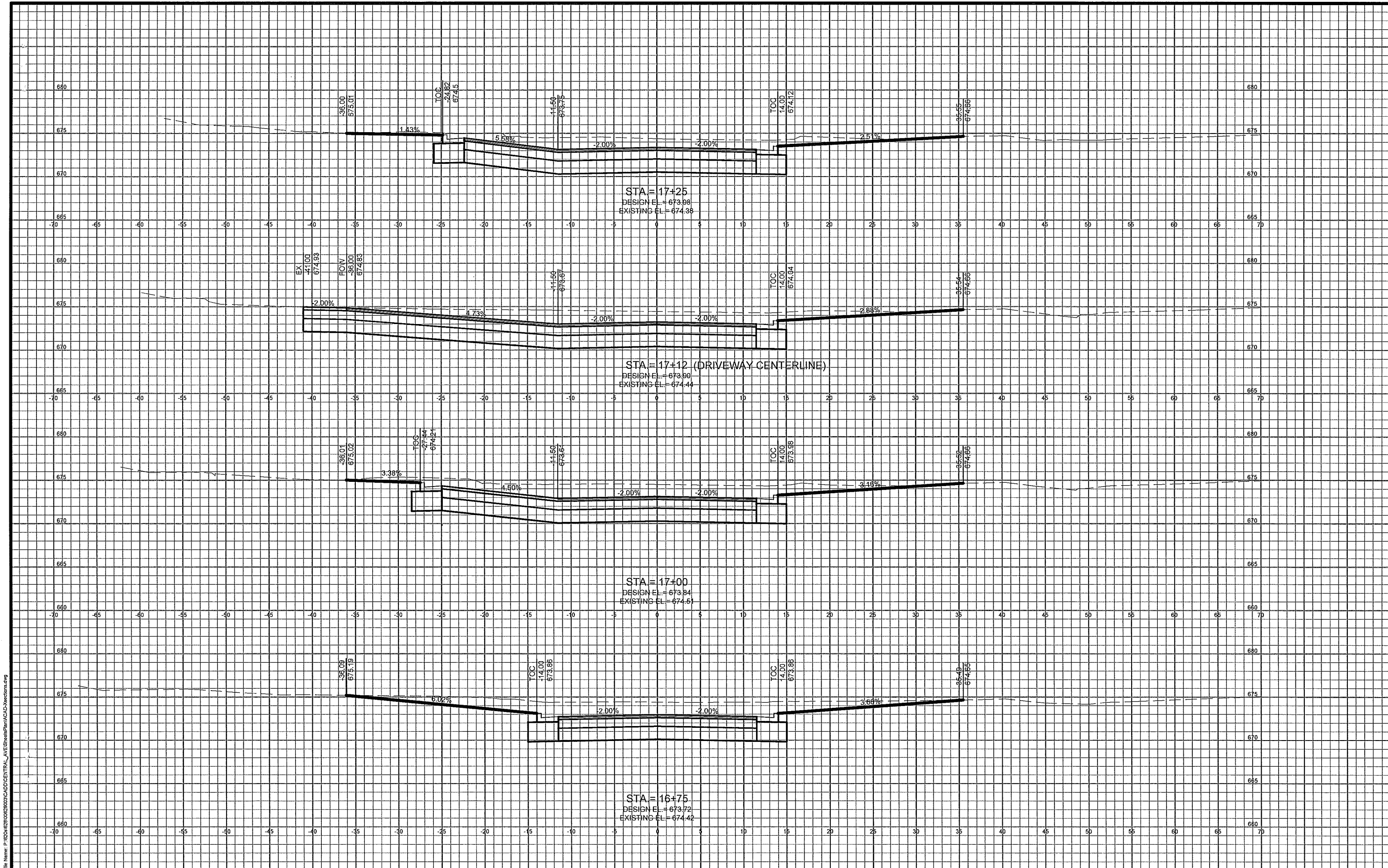
PROJECT NO: 28003	SCALE: AS SHOWN	NO.	DATE	REVISION	BY
PROJECT DATE: 11/20/12	DRAWN BY: KS				
CHECKED BY: XXX					
PLOT DATE:					

MSA
 TRANSPORTATION • MUNICIPAL
 DEVELOPMENT • ENVIRONMENTAL
 301 West First Street, Duluth, MN 55802
 218-722-3915 1-800-777-7380 Fax: 218-722-4548
 Web Address: www.msa-ps.com
 © MSA Professional Services, Inc.

CROSS SECTION SHEET

CENTRAL AVE RECONSTRUCTION
 CITY OF SUPERIOR
 SUPERIOR, WISCONSIN

FILE NO
 00628003
 SHEET
 CS 7



File Name: P:\2006\0628003\0628003\CENTRAL_AVE_Sheet\Plan\VCAD\sections.dwg

PROJECT NO: 0628003	SCALE: AS SHOWN	NO.	DATE	REVISION	BY
PROJECT DATE: 1/13/2012	DRAWN BY: KS				
CHECKED BY: xxx					
PLOT DATE:					

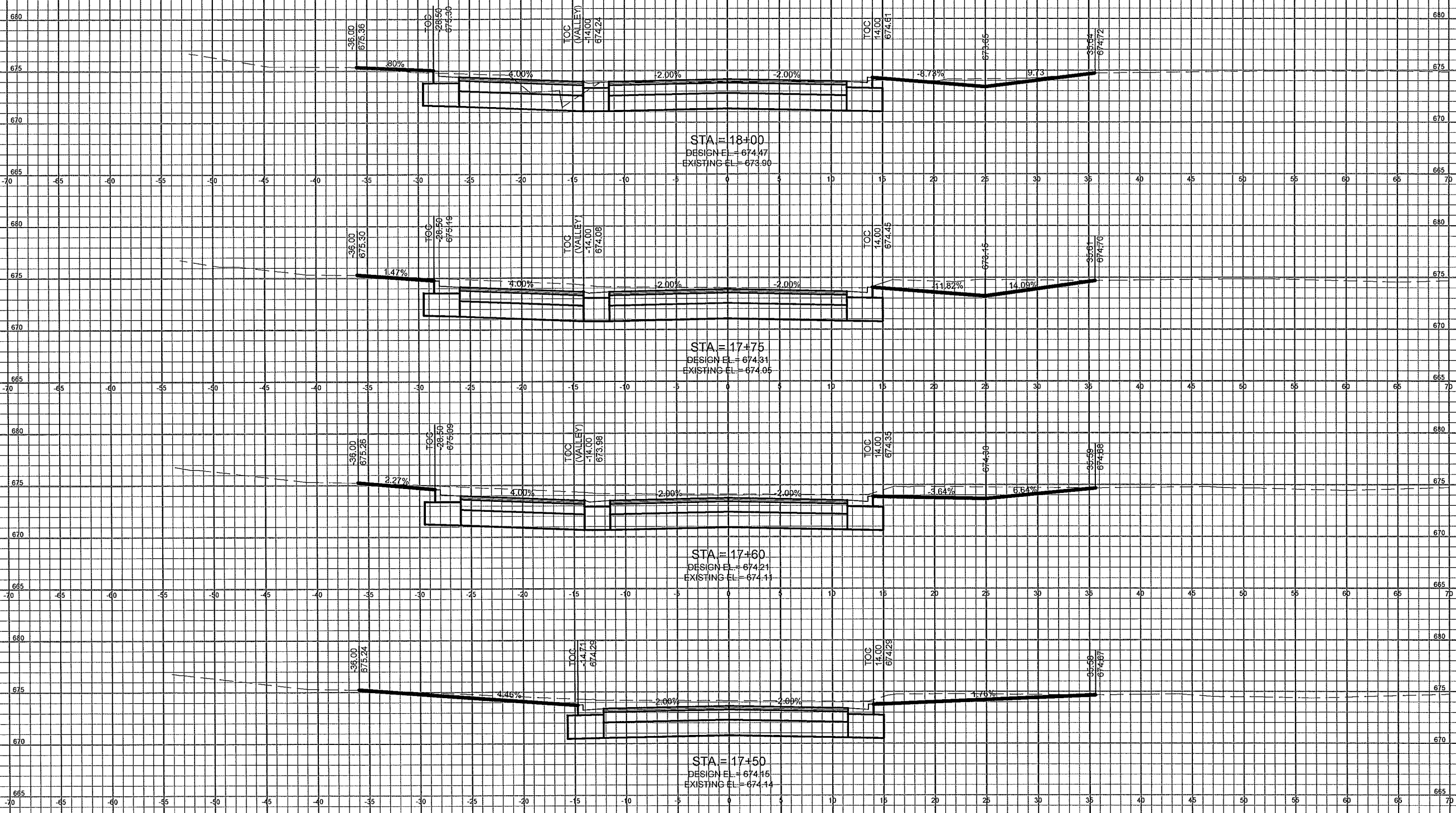
MSA
PROFESSIONAL SERVICES

TRANSPORTATION • MUNICIPAL
DEVELOPMENT • ENVIRONMENTAL
301 West First Street Duluth, MN 55802
218-722-3915 1-800-777-7380 Fax: 218-722-4548
Web Address: www.msa-ps.com
© MSA PROFESSIONAL SERVICES, INC.

CROSS SECTION SHEET

CENTRAL AVE RECONSTRUCTION
CITY OF SUPERIOR
SUPERIOR, WISCONSIN

File Name: P:\020628\020628\CADD\CENTRAL_AVE\SheetPlan\CS9.dwg



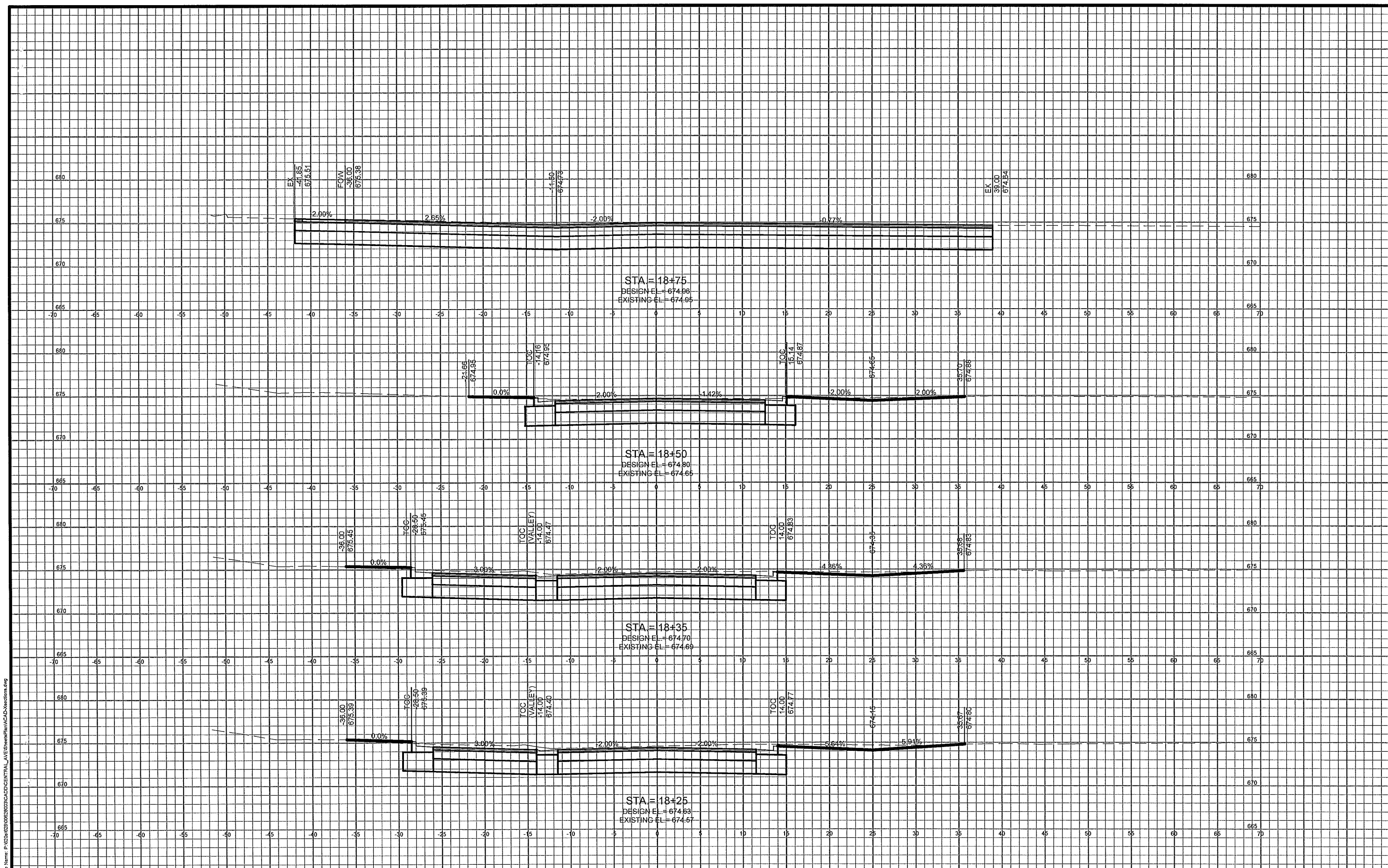
PROJECT NO: 020628	SCALE: AS SHOWN	NO.	DATE	REVISION	BY
PROJECT DATE: 11/02/12	DRAWN BY: KS				
CHECKED BY: xxx					
PLOT DATE:					

MSA
TRANSPORTATION • MUNICIPAL
DEVELOPMENT • ENVIRONMENTAL
301 West First Street, Duluth, MN 55802
218-722-3915 1-800-777-7380 Fax: 218-722-4548
Web Address: www.msa-ps.com
© MSA Professional Services, Inc.

CROSS SECTION SHEET

CENTRAL AVE RECONSTRUCTION
CITY OF SUPERIOR
SUPERIOR, WISCONSIN

FILE NO:
00628003
SHEET:
CS 9



File Name: P:\020628003\020628003\CADD\CENTRAL_AVE\SheetPlan\CAD\Sections.dwg

PROJECT NO: 021003	SCALE: AS SHOWN	NO.	DATE	REVISION	BY
PROJECT DATE: 10/20/12	DRAWN BY: K3				
CHECKED BY: xxx					
PLOT DATE:					

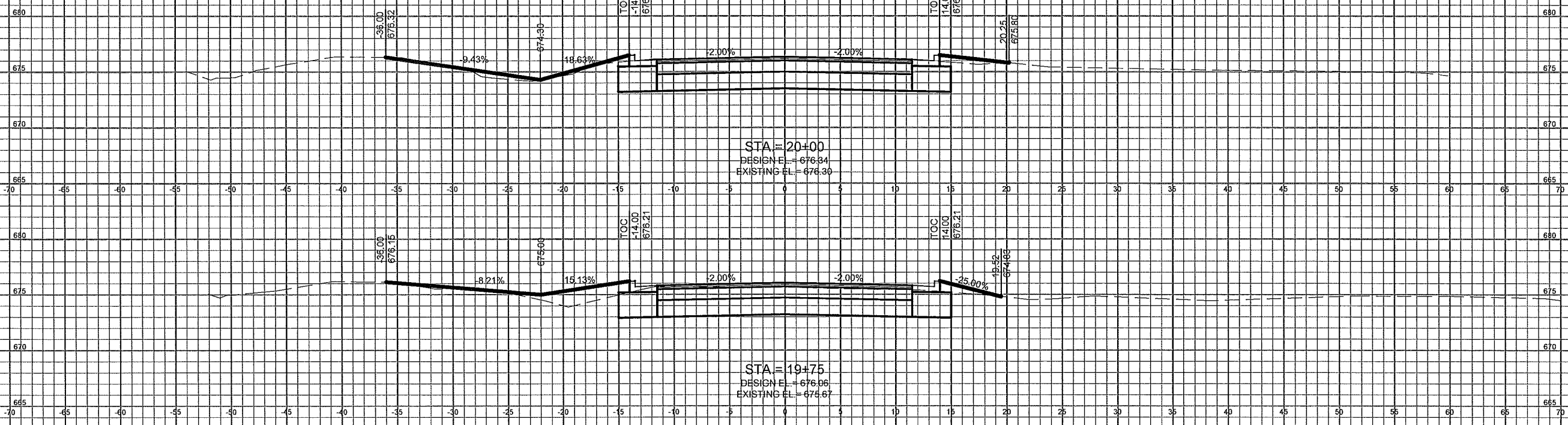
MSA
 TRANSPORTATION • MUNICIPAL
 DEVELOPMENT • ENVIRONMENTAL
 301 West First Street Duluth, MN 55802
 218-722-3915 1-800-777-7380 Fax: 218-722-4548
 Web Address: www.msa-ps.com
 © MSA Professional Services, Inc.

CROSS SECTION SHEET

CENTRAL AVE RECONSTRUCTION
 CITY OF SUPERIOR
 SUPERIOR, WISCONSIN

FILE NO:
00628003
 SHEET:
CS 10

File Name: P:\020628000\CADD\CENTRAL_AVE\Sheet\11\MSA\0628003.dwg



PROJECT NO: 0628003	SCALE: AS SHOWN	NO.	DATE	REVISION	BY
PROJECT DATE: 11/3/2012	DRAWN BY: KS				
CHECKED BY: XXX					
PLOT DATE:					

MSA
 PROFESSIONAL SERVICES
 TRANSPORTATION • MUNICIPAL
 DEVELOPMENT • ENVIRONMENTAL
 301 West First Street, Duluth, MN 55802
 218-722-3915 1-800-777-7380 Fax: 218-722-4548
 Web Address: www.msa-ps.com
 © MSA Professional Services, Inc.

CROSS SECTION SHEET

CENTRAL AVE RECONSTRUCTION
 CITY OF SUPERIOR
 SUPERIOR, WISCONSIN

FILE NO:
00628003
 SHEET:
CS 12