

LEGEND

- ADS N12 6" PERFORATED
- STANDARD FLEXIBLE 6" PERFORATED
- STANDARD FLEXIBLE 6" NON-PERFORATED

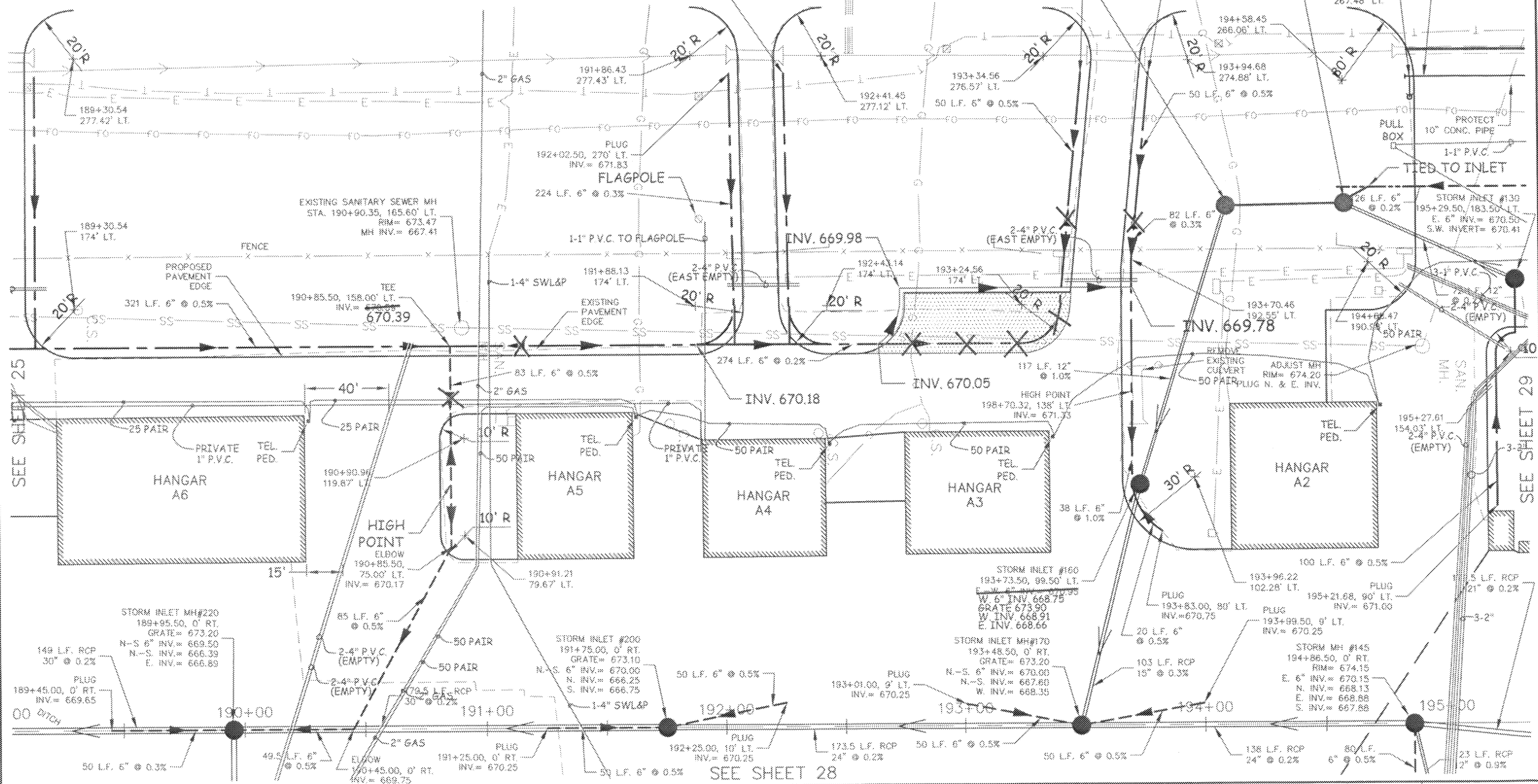


HAMMOND AVENUE

TYPE 3 INLET (DRY)
GRATE: 673.9±
INVERT IN/OUT: 670.00

TYPE 3 INLET
GRATE: 671.6±
INVERT IN/OUT: 670.10

8" 210
L.F. OF
WATERMAIN



G:\2000PROJ\00552090\dwg\Apron\Record Drawings\Apron-Plan-Sheets-Plot.DWG, 6/27/2005 2:51:00 PM, M.R.E.

SEE SHEET 25

SEE SHEET 29

PROJECT MANAGER BRAD VOLKER		COOPER ENGINEERING		310 WEST SOUTH STREET, P.O. BOX 230 RICE LAKE, WISCONSIN 54868-0230 TELEPHONE (715) 234-7000 FAX (715) 234-1024		RICHARD I. BONG MEMORIAL AIRPORT SUPERIOR, WISCONSIN		SHEET DESCRIPTION PLAN SHEETS 3-55-0083-07		DATE 05-'03		DRAWN BY J.T.D.	
CHECKED BY: W.R.		APPROVED BY: B.R.M.						SCALE AS NOTED		PROJECT NO. 00552090		SHEET NO. 27	