

LOCATION PLAN



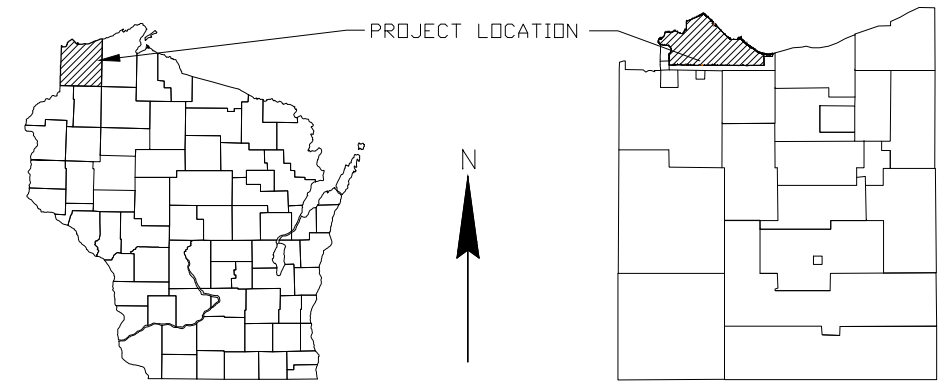
SOUTH SUPERIOR STORM SEWER, PHASE II

INDEX







TITLE AND PROJECT LOCATION.....G1
 PROJECT SITE OVERVIEW AND STATIONING.....G2
 SCHEDULE OF QUANTITIES.....G3
 STORM SEWER PLAN AND PROFILE.....ST1-ST5
 SANITARY SEWER PLAN AND PROFILE.....SA1
 EROSION CONTROL AND RESURFACING PLAN.....R1-R6
 DETAIL DRAWINGS.....D1-2

ORIGINATION DATE: 8/25/09
 REVISION 1 DATE: 3/09/10
 REVISION 2 DATE: 05/05/10

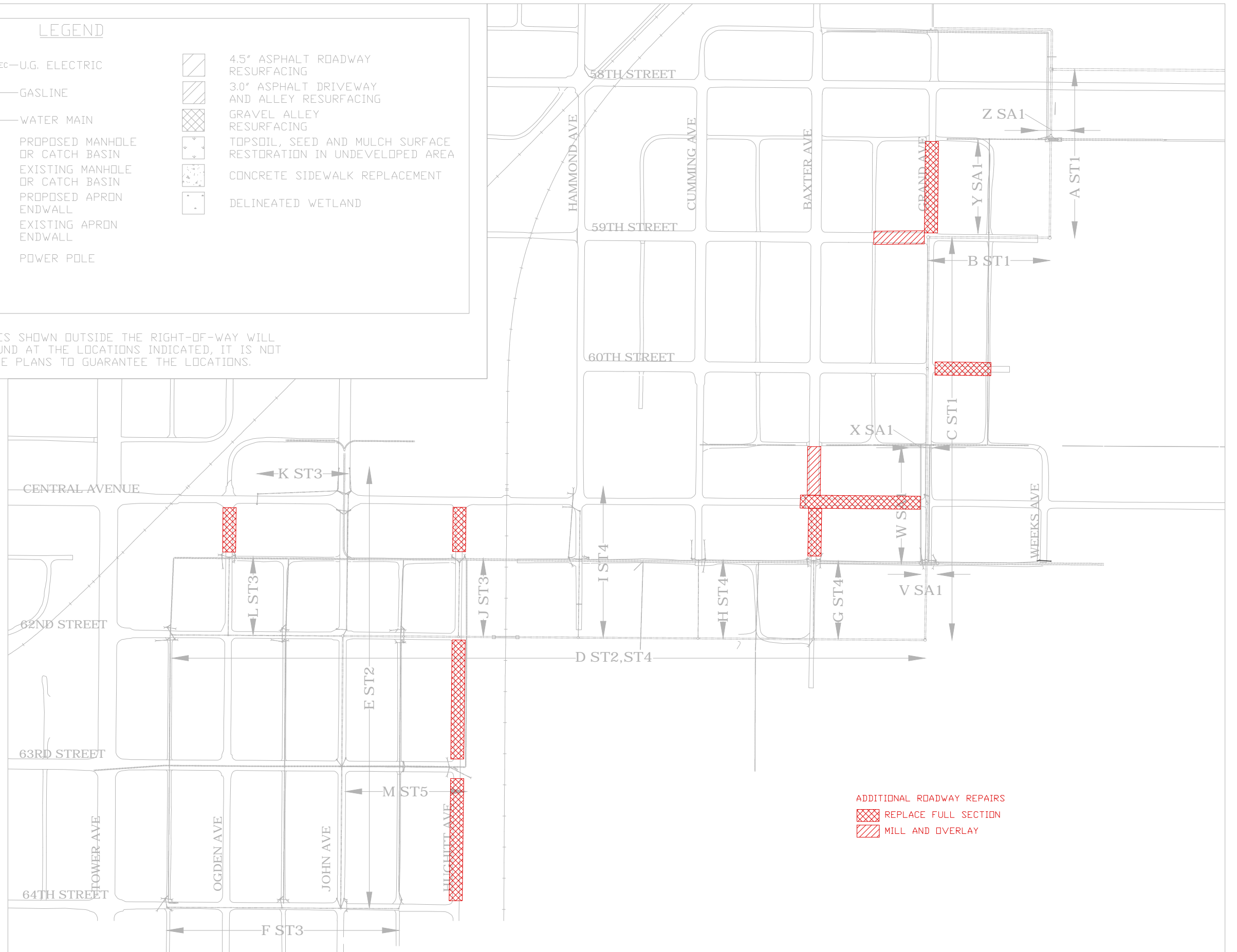
ENGINEER SHORT ELLIOTT HENDRICKSON INC.
PROJECT ENGINEER DAN HINZMANN
RESIDENT PROJECT REP. DAN HINZMANN
SURVEYOR AYRES ASSOCIATES
GENERAL CONTRACTOR RJS CONSTRUCTION GROUP
SUBCONTRACTORS
 AGG. & SEL. GRAN. BASE MONARCH PAVING
 BITUMINOUS SUPERIOR LANDSCAPING
 EXCAVATING & GRADING SUPERIOR LANDSCAPING
 EROSION CONTROL RJS CONSTRUCTION GROUP
 TURF ESTABLISHMENT
 UNDERGROUND UTILITIES (SANITARY,STORM) AMERICAN ENGINEERING TESTING
 TESTING-MATERIALS GREAT LAKES PIPE SERVICE
 TESTING-UTILITIES 2010-2013
 YEAR OF CONSTRUCTION





LEGEND

----- PROPOSED STORM SEWER	—ELEC—ELEC— U.G. ELECTRIC	 4.5" ASPHALT ROADWAY RESURFACING
----- PROPOSED SANITARY SEWER	—GAS— GASLINE	 3.0" ASPHALT DRIVEWAY AND ALLEY RESURFACING
----- STORM SEWER	—WATER— WATER MAIN	 GRAVEL ALLEY RESURFACING
..... SANITARY SEWER	⊙ PROPOSED MANHOLE OR CATCH BASIN	 TOPSOIL, SEED AND MULCH SURFACE RESTORATION IN UNDEVELOPED AREA
—R/W—R/W— RIGHT OF WAY LINE	⊙ EXISTING MANHOLE OR CATCH BASIN	 CONCRETE SIDEWALK REPLACEMENT
----- PROPERTY LINE	< PROPOSED APRON ENDWALL	 DELINEATED WETLAND
+++++ R.R. TRACKS	⌋ EXISTING APRON ENDWALL	
----- DITCH	⊖ POWER POLE	

ALTHOUGH FEATURES SHOWN OUTSIDE THE RIGHT-OF-WAY WILL GENERALLY BE FOUND AT THE LOCATIONS INDICATED, IT IS NOT THE INTENT OF THE PLANS TO GUARANTEE THE LOCATIONS.



ADDITIONAL ROADWAY REPAIRS
 REPLACE FULL SECTION
 MILL AND OVERLAY

NOT TO SCALE

RECORD DRAWINGS
 UPDATED 11/2013

SOUTH SUPERIOR STORM SEWER, PHASE II

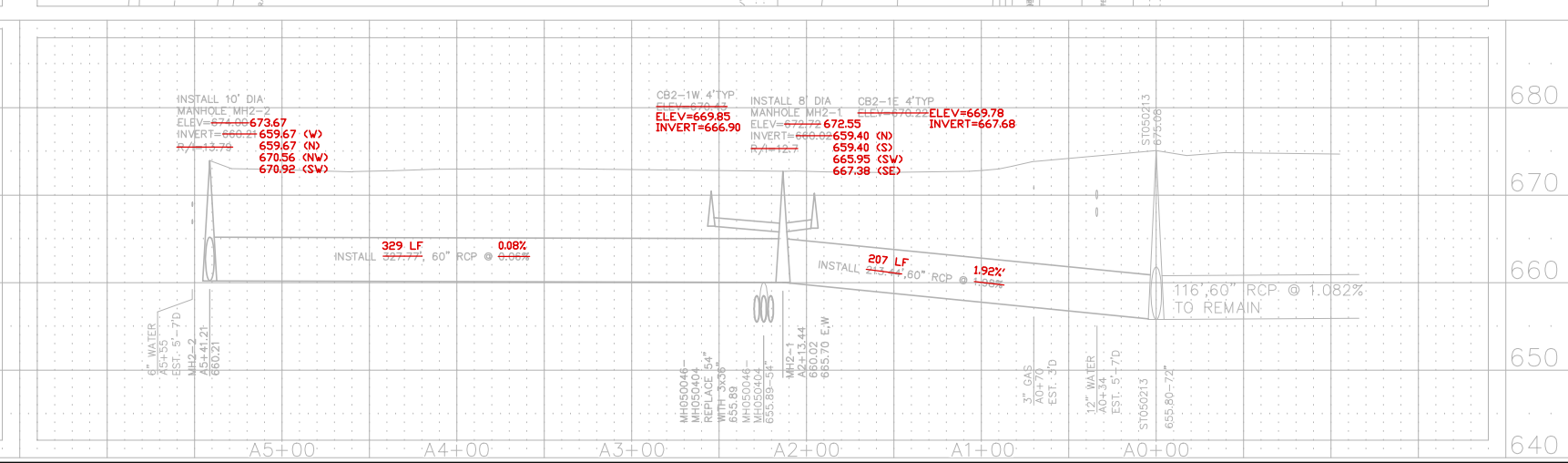
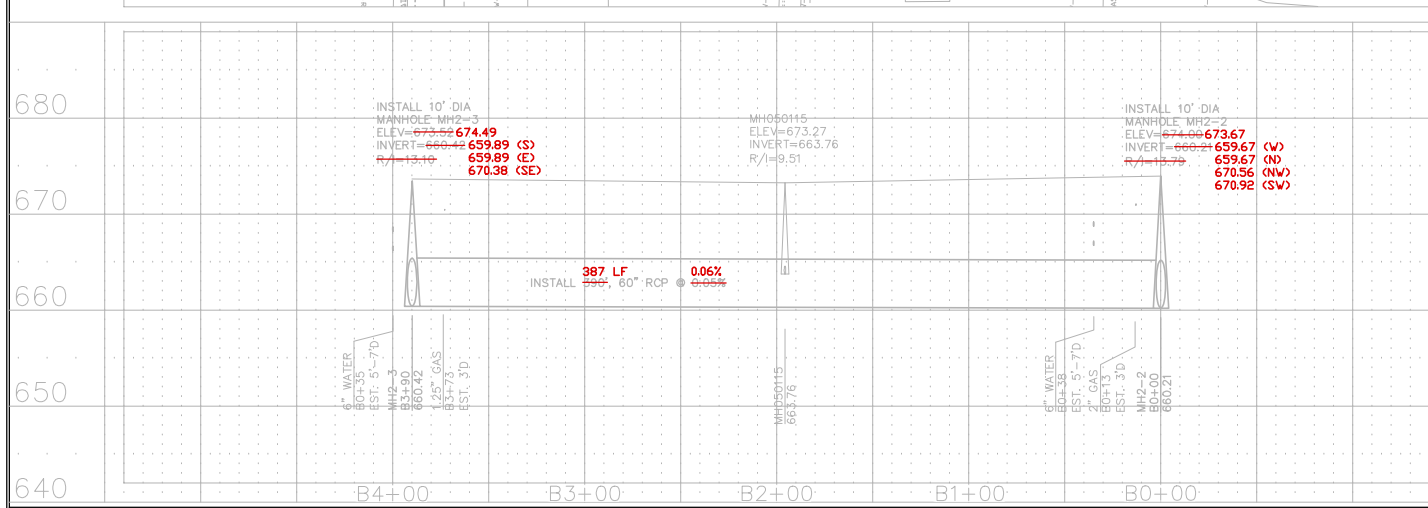
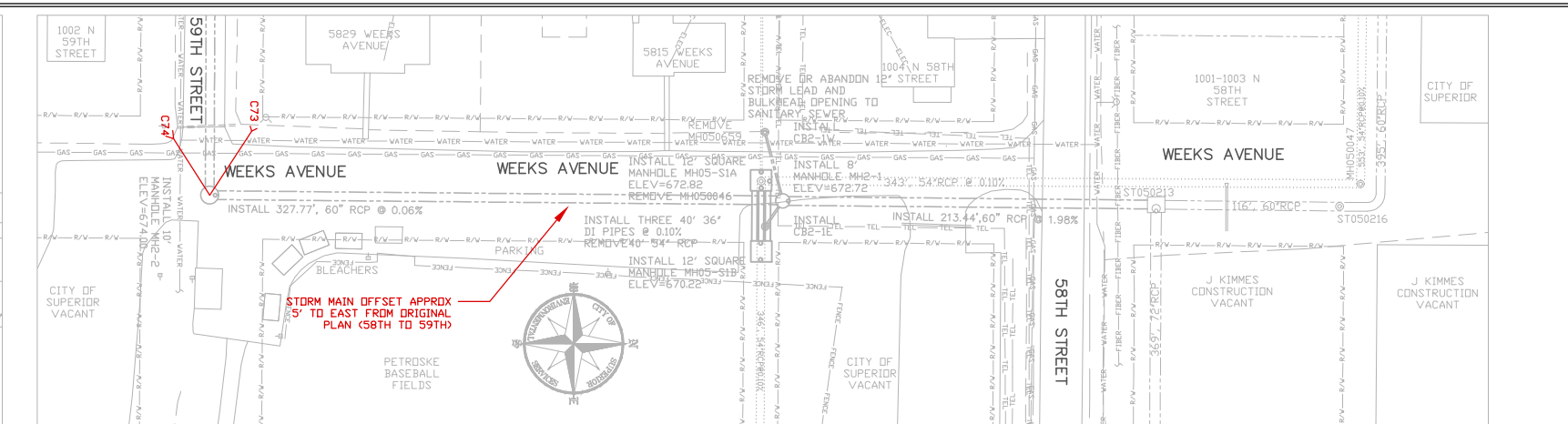
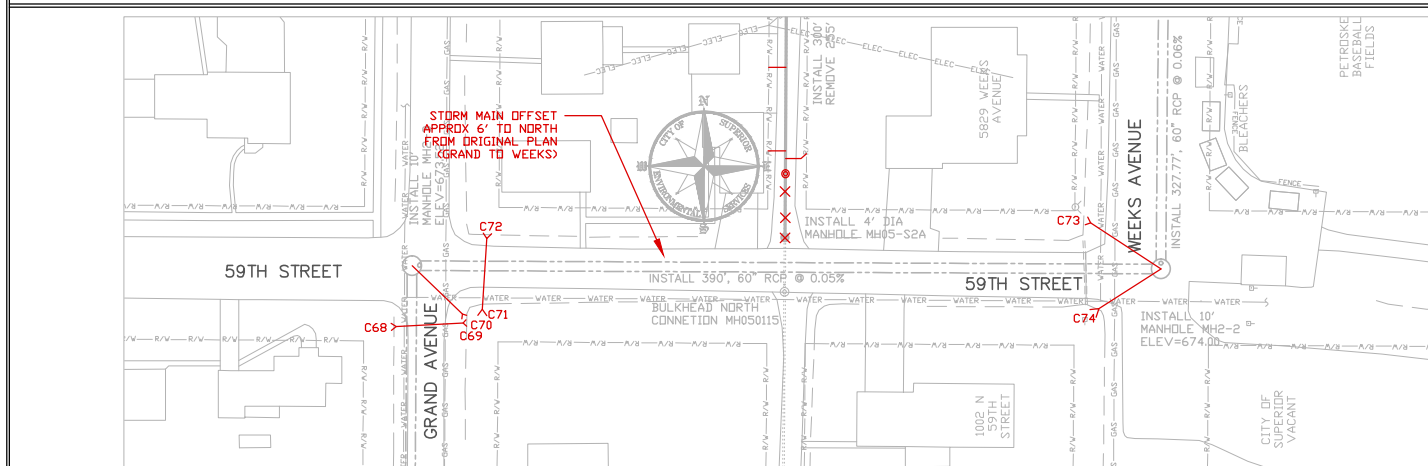
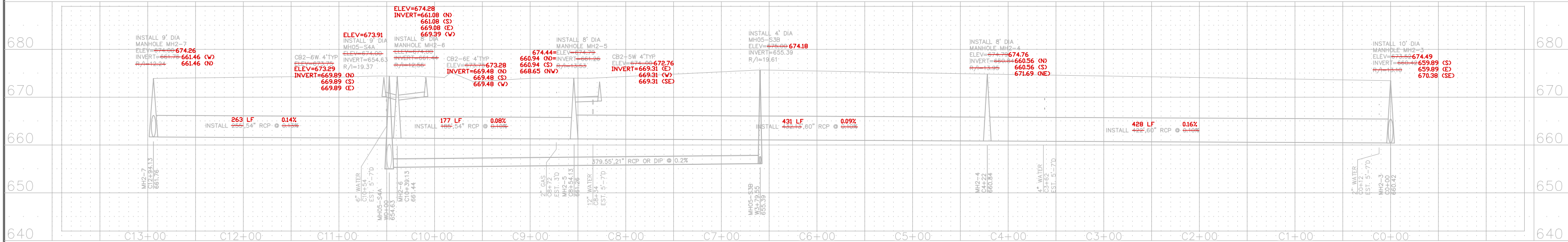
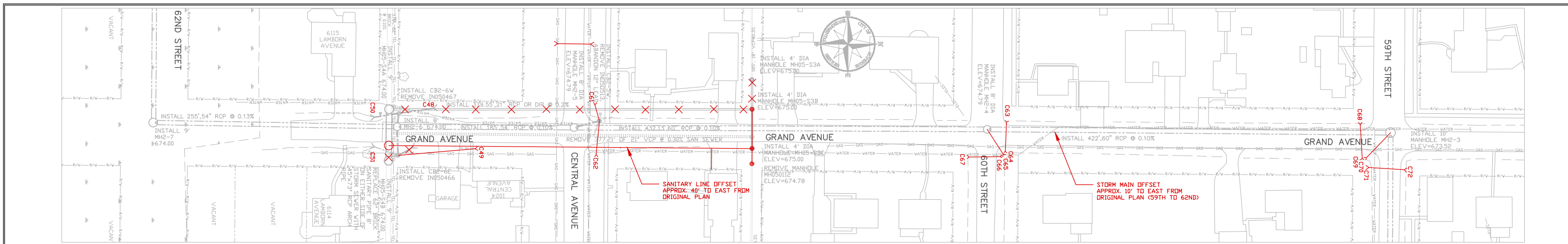
OVERVIEW

SUPERIOR, WISCONSIN

DATE: AUGUST 25, 2009

SURVEY	DATE	BY	DATE	BY
DESIGN	DATE	BY	DATE	BY
APPROVAL	DATE	BY	DATE	BY

PLANS FOR CONSTRUCTION
 DATE: 05/05/10
 G2.2



1"=50' HORZ.
1"=10' VERT. FOR 22"x34" SHEETS

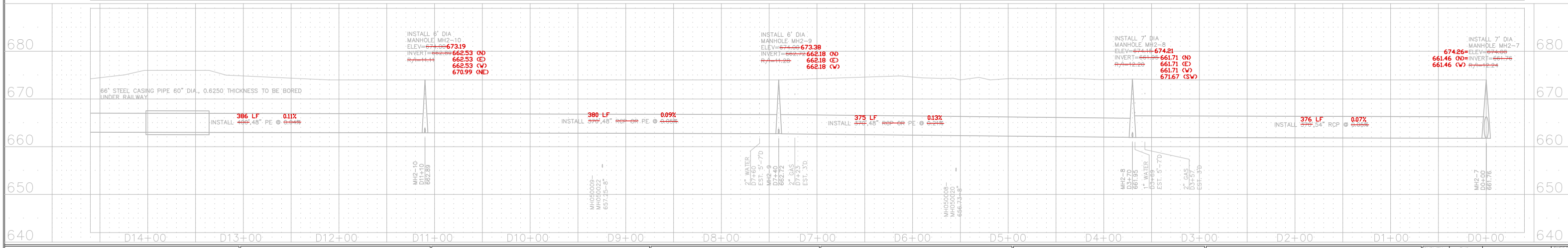
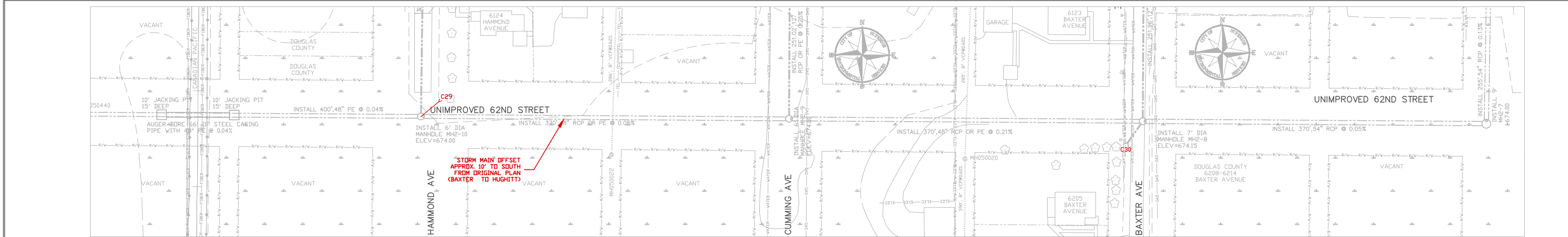
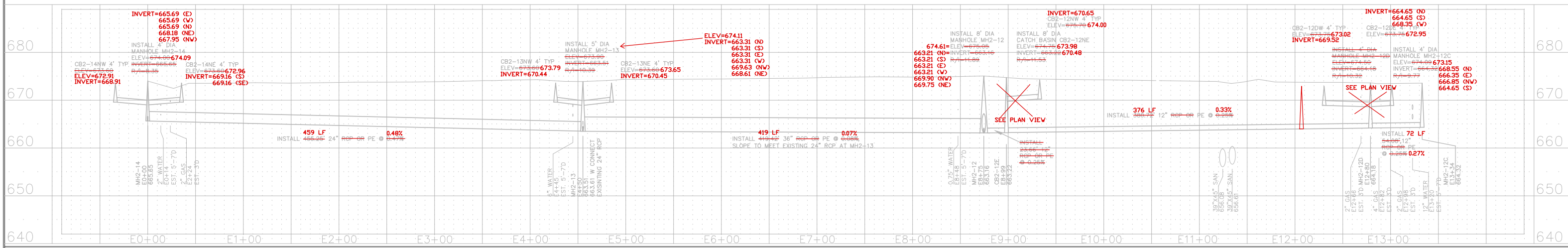
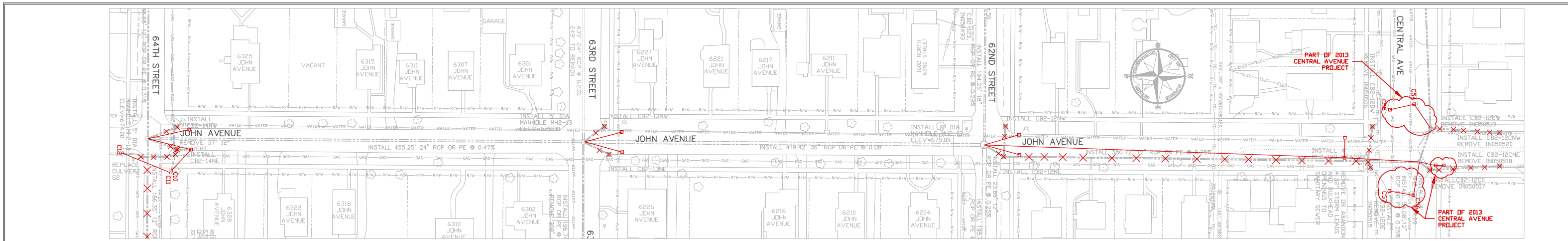
RECORD DRAWINGS
UPDATED 11/2013

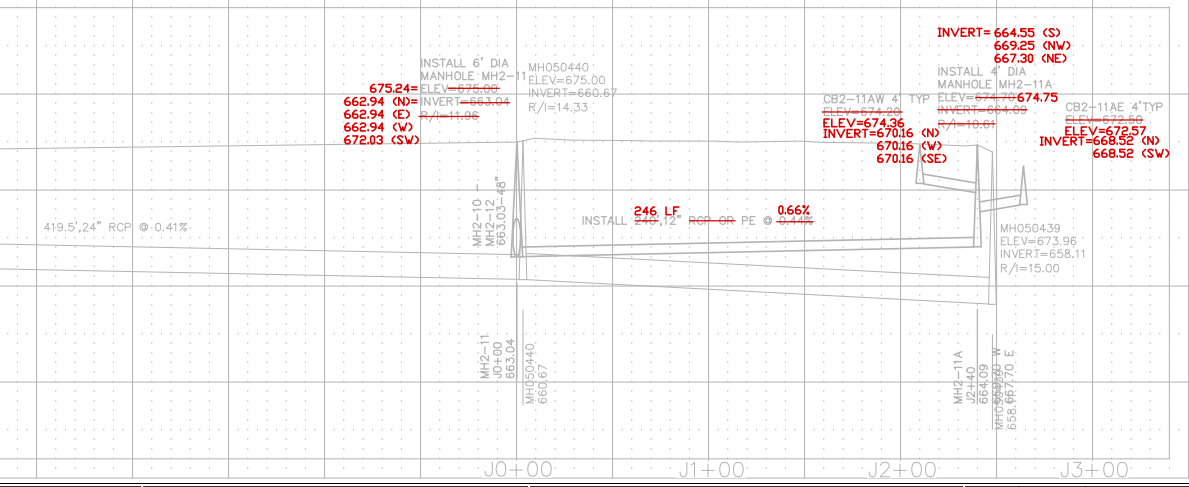
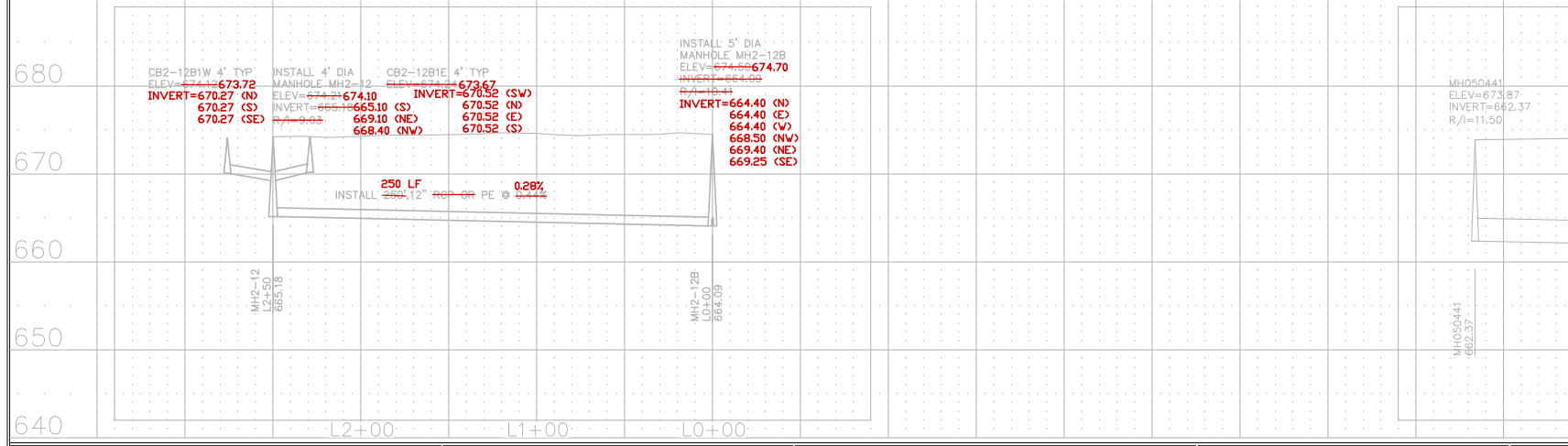
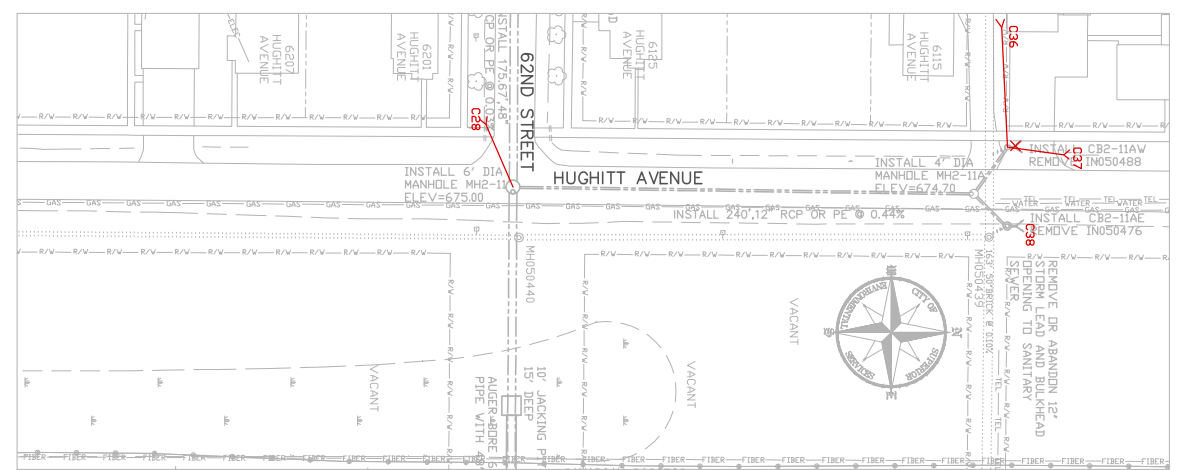
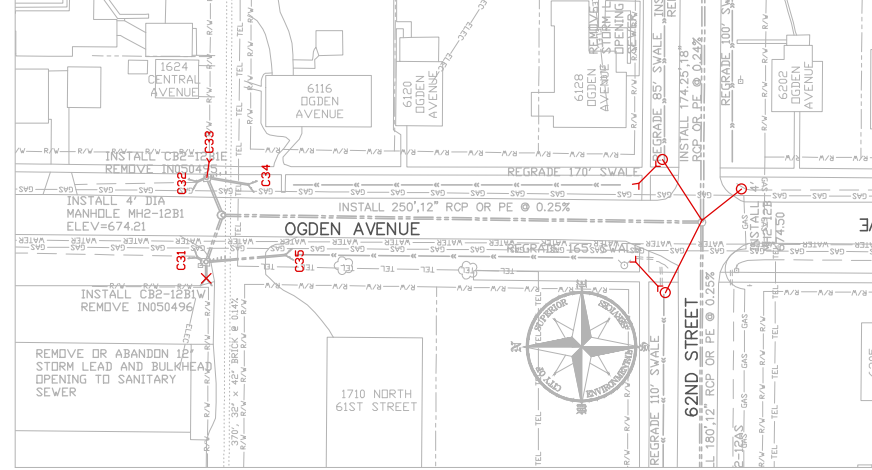
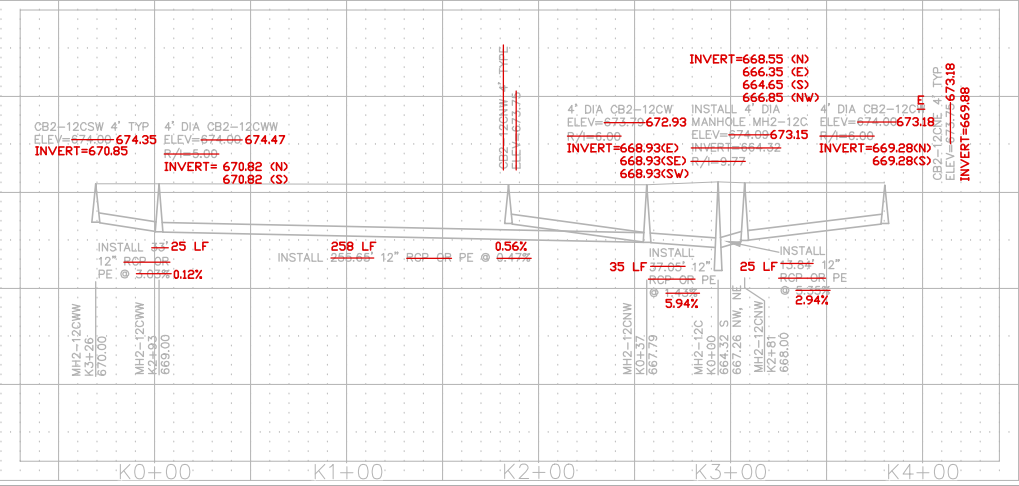
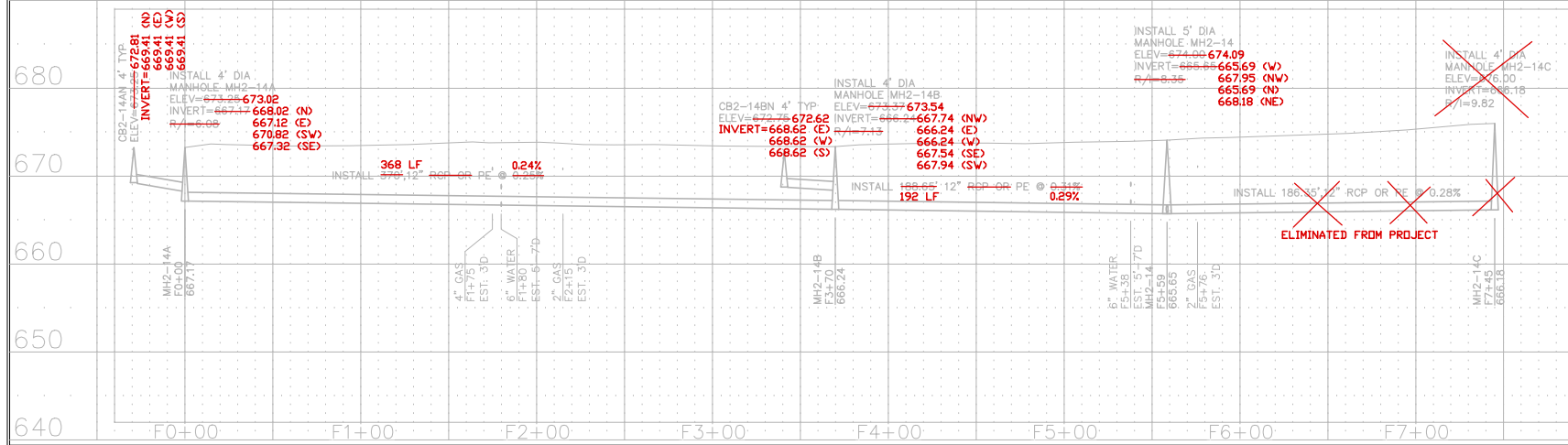
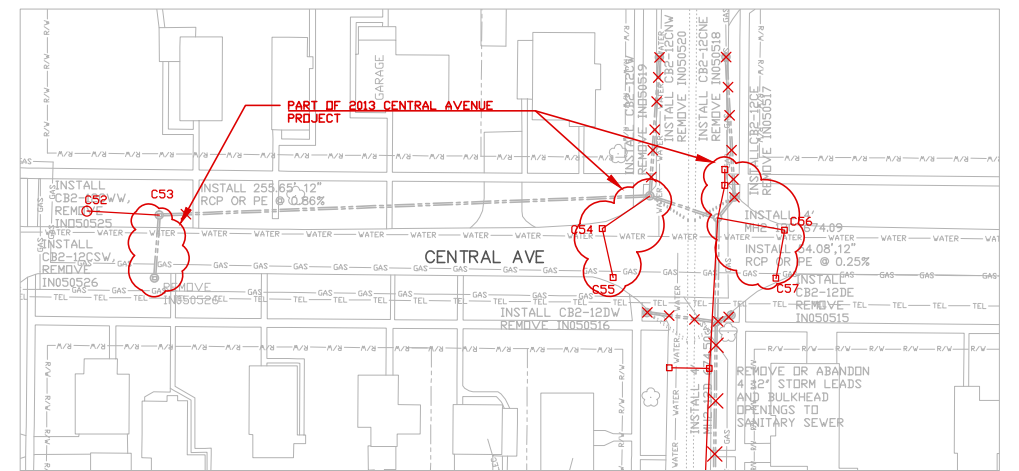
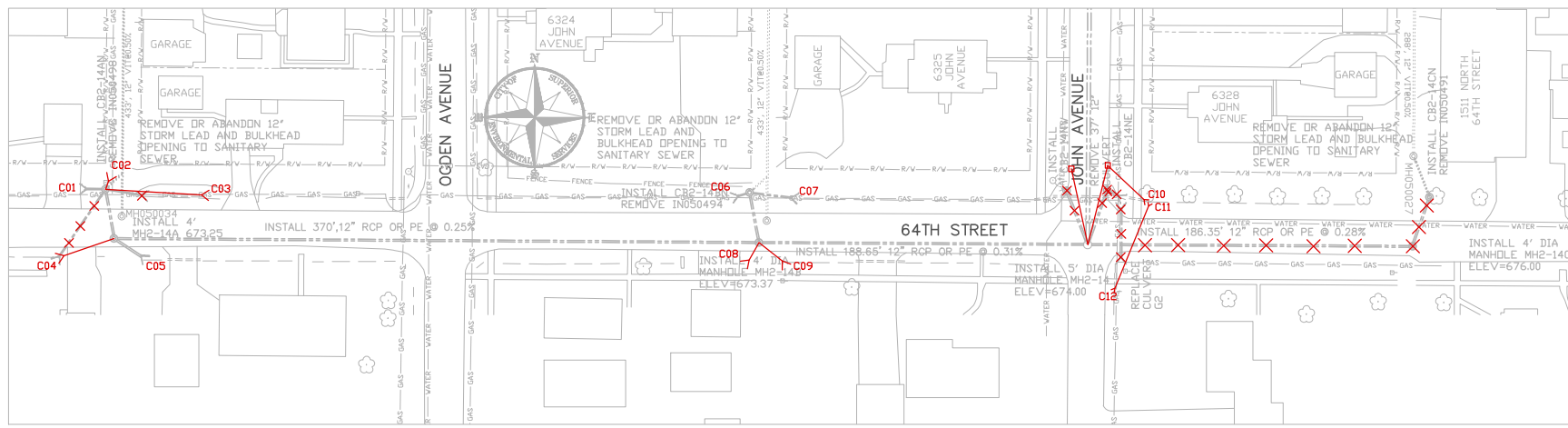
SOUTH SUPERIOR STORM SEWER, PHASE II

SEWER PLAN AND PROFILE DRAWING

SUPERIOR, WISCONSIN

DESIGNED BY	DATE	PLANS FOR CONSTRUCTION	SHEET
DRAWN BY	AUGUST 21, 2009		5712
CHECKED BY			
APPROVED BY			





1"=50' HORZ.
1"=10' VERT.
FOR 22"x34" SHEETS

RECORD DRAWINGS
UPDATED 11/2013

SOUTH SUPERIOR STORM SEWER, PHASE II

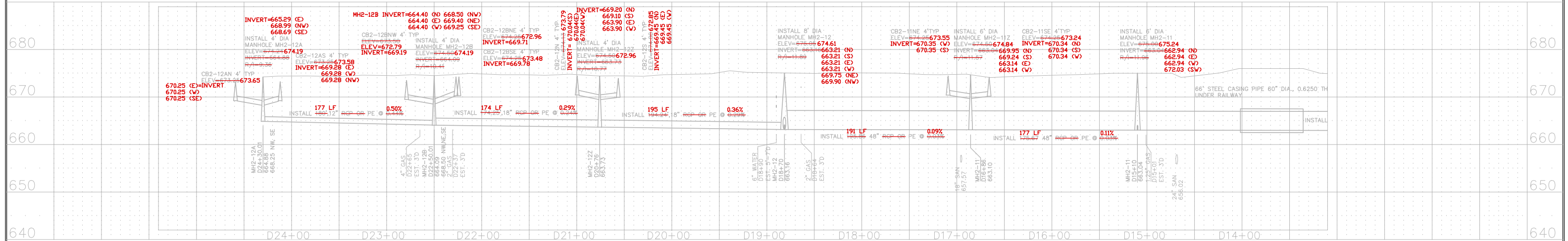
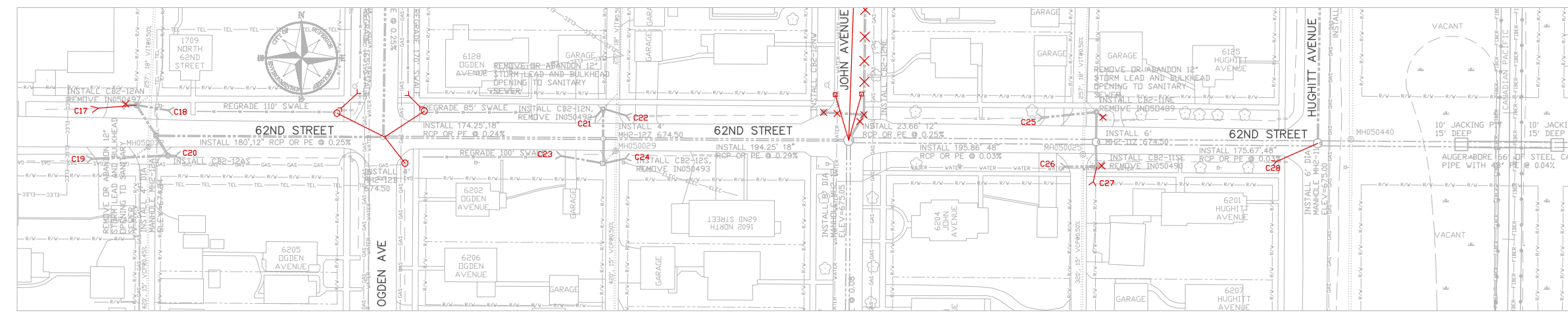
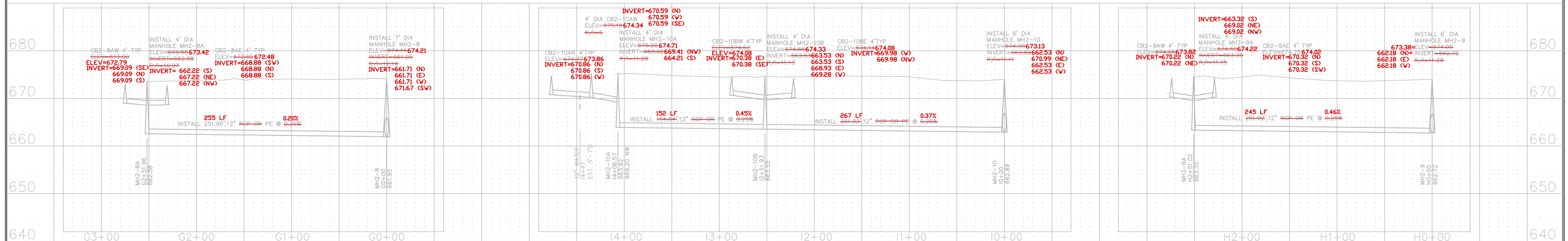
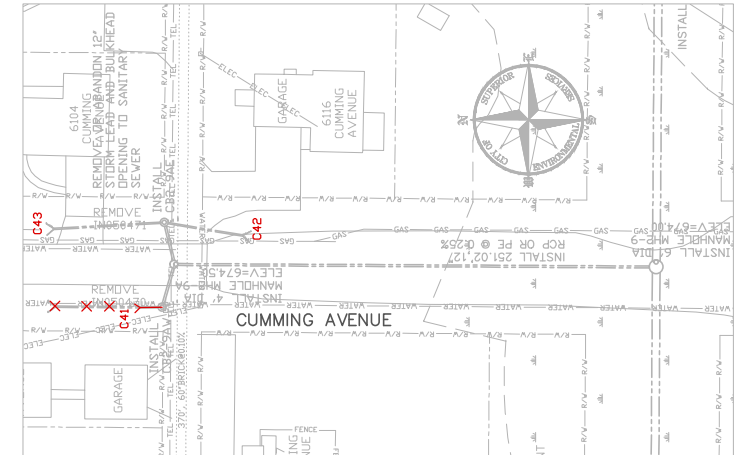
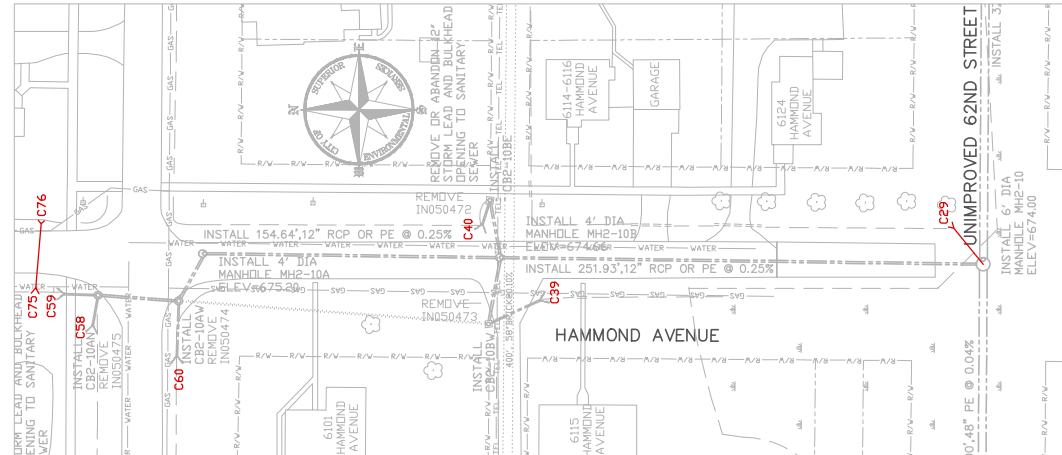
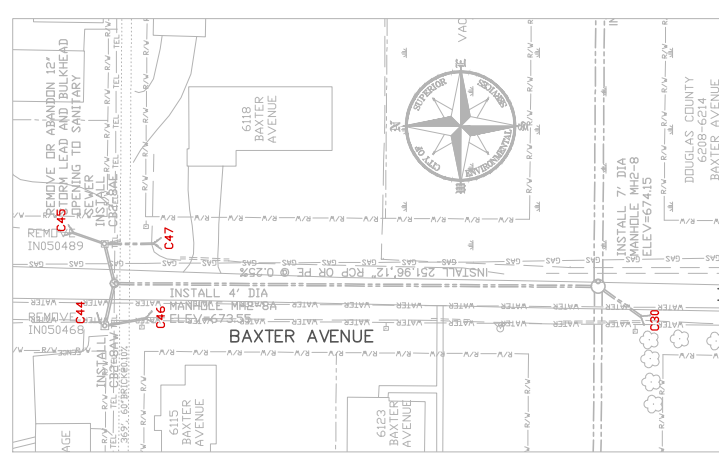
SEWER PLAN AND PROFILE DRAWING

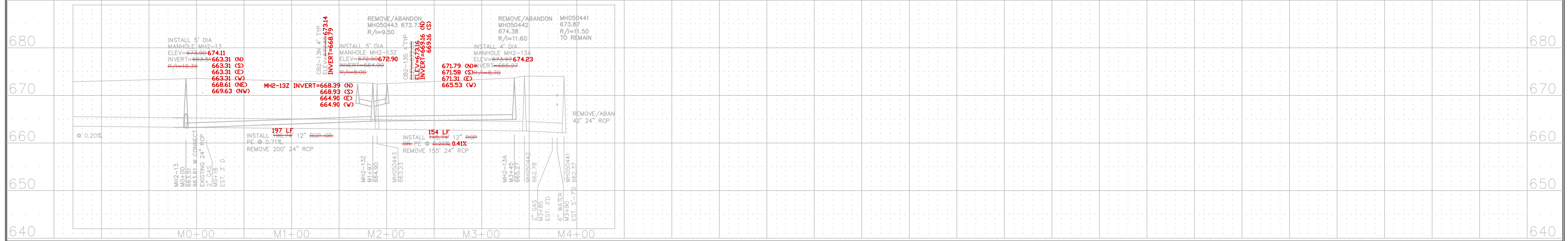
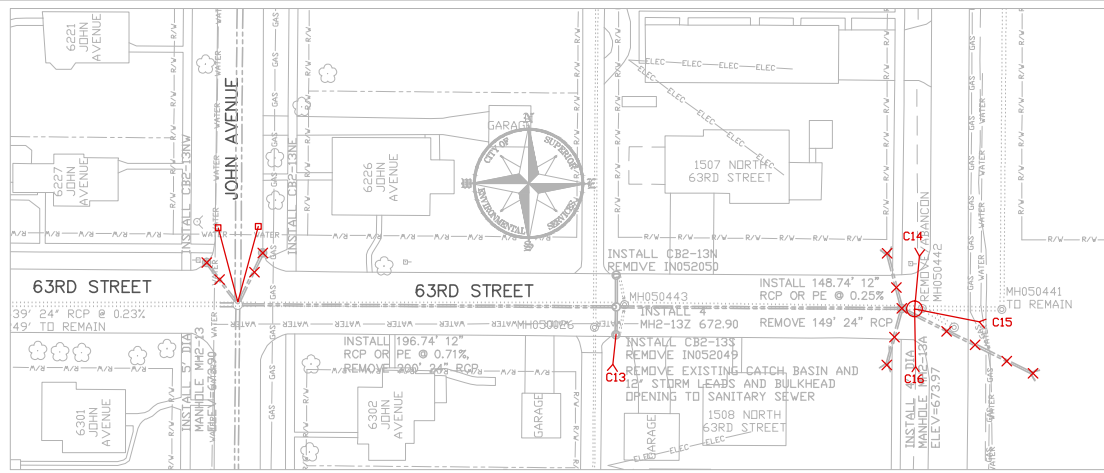
SUPERIOR, WISCONSIN

PLANS FOR CONSTRUCTION
DATE: 05/05/18

DATE: AUGUST 21, 2009

\$3.2





ST1.2

STRUCTURE ID	RIM ELEVATION	INVERT ELEVATION
C48	N/A	671.72
C49	N/A	672.33
C50	N/A	671.98
C51	N/A	671.42
C61	N/A	670.75
C62	N/A	671.66
C63	N/A	672.99
C64	N/A	672.82
C65	N/A	672.19
C66	N/A	672.68
C67	N/A	673.35
C68	N/A	672.50
C69	N/A	671.87
C70	N/A	671.13
C71	N/A	672.04
C72	N/A	672.13
C73	N/A	671.51
C74	N/A	671.82

ST2.2

STRUCTURE ID	RIM ELEVATION	INVERT ELEVATION
C10	N/A	672.46
C11	N/A	672.46
C12	N/A	672.27
C29	N/A	671.69
C30	N/A	672.17
C54	673.32	669.02
C55	673.38	669.18
C56	672.93	666.63
C57	672.89	668.39

ST3.2

STRUCTURE ID	RIM ELEVATION	INVERT ELEVATION
C01	N/A	671.90
C02	N/A	670.87
C03	N/A	671.30
C04	N/A	671.45
C05	N/A	671.23
C06	N/A	670.22
C07	N/A	671.29
C08	N/A	671.23
C09	N/A	672.04
C10	N/A	672.46
C11	N/A	672.46
C12	N/A	672.27
C28	N/A	672.68
C31	N/A	671.73
C32	N/A	672.01
C33	N/A	672.27
C34	N/A	671.85
C35	N/A	672.02
C37	N/A	672.51
C38	N/A	671.60
C39	N/A	672.51
C52	674.06	671.01
C53	673.76	670.36
C54	673.32	669.02
C55	673.38	669.18
C56	672.93	666.63
C57	672.89	668.39

ST4.2

STRUCTURE ID	RIM ELEVATION	INVERT ELEVATION
C17	N/A	672.14
C18	N/A	672.44
C19	N/A	672.63
C20	N/A	672.20
C21	N/A	672.87
C22	N/A	671.81
C23	N/A	672.47
C24	N/A	672.10
C25	N/A	673.28
C26	N/A	673.04
C27	N/A	672.91
C28	N/A	672.68
C29	N/A	671.69
C30	N/A	672.17
C39	N/A	672.51
C40	N/A	671.47
C41	N/A	671.83
C42	N/A	671.91
C43	N/A	671.74
C44	N/A	670.90
C45	N/A	670.74
C46	N/A	670.87
C47	N/A	671.86
C58	N/A	672.10
C59	N/A	672.54
C60	N/A	672.96
C75	N/A	672.69
C76	N/A	672.78

ST5.2

STRUCTURE ID	RIM ELEVATION	INVERT ELEVATION
C13	N/A	671.93
C14	N/A	672.36
C15	N/A	671.99
C16	N/A	672.18

1"=50' HORZ.
1"=10' VERT.
FOR 22"x34" SHEETS

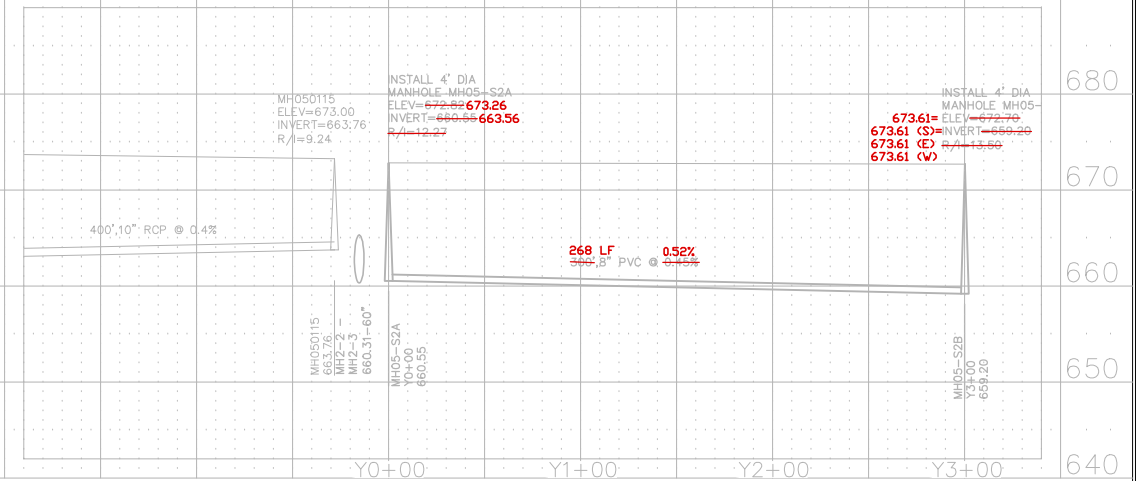
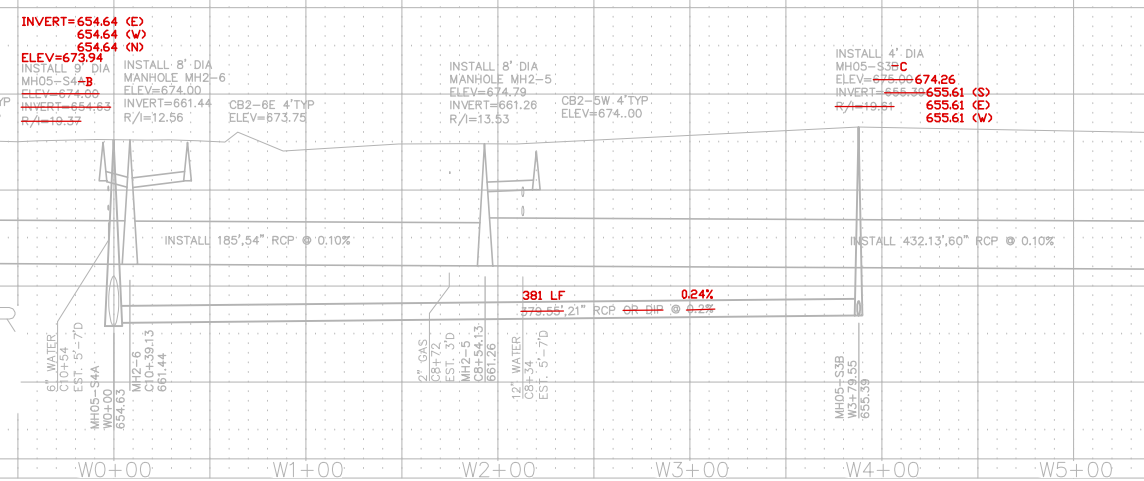
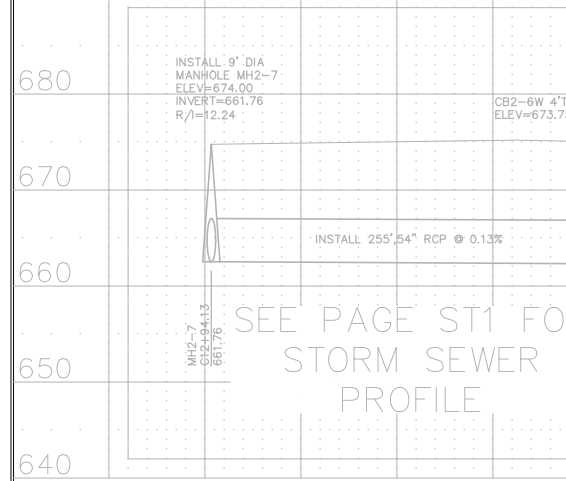
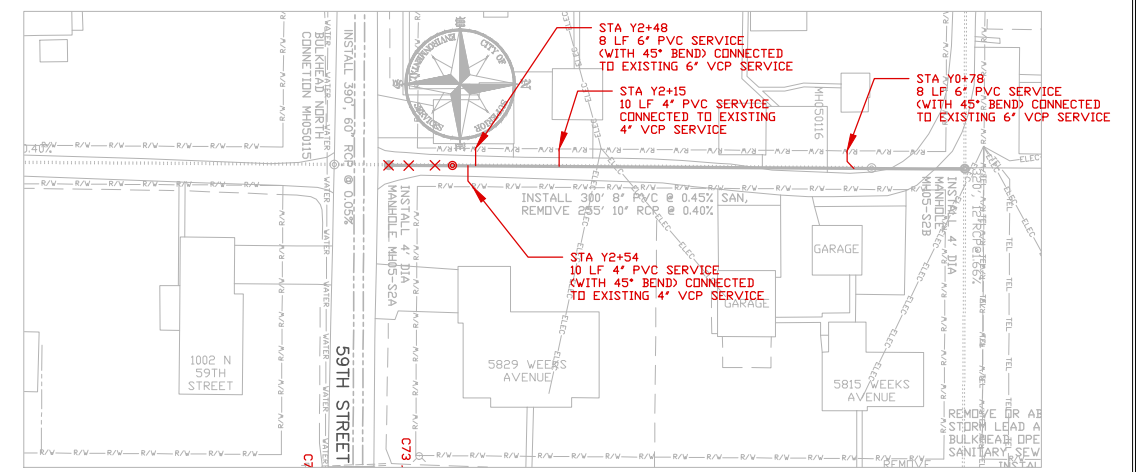
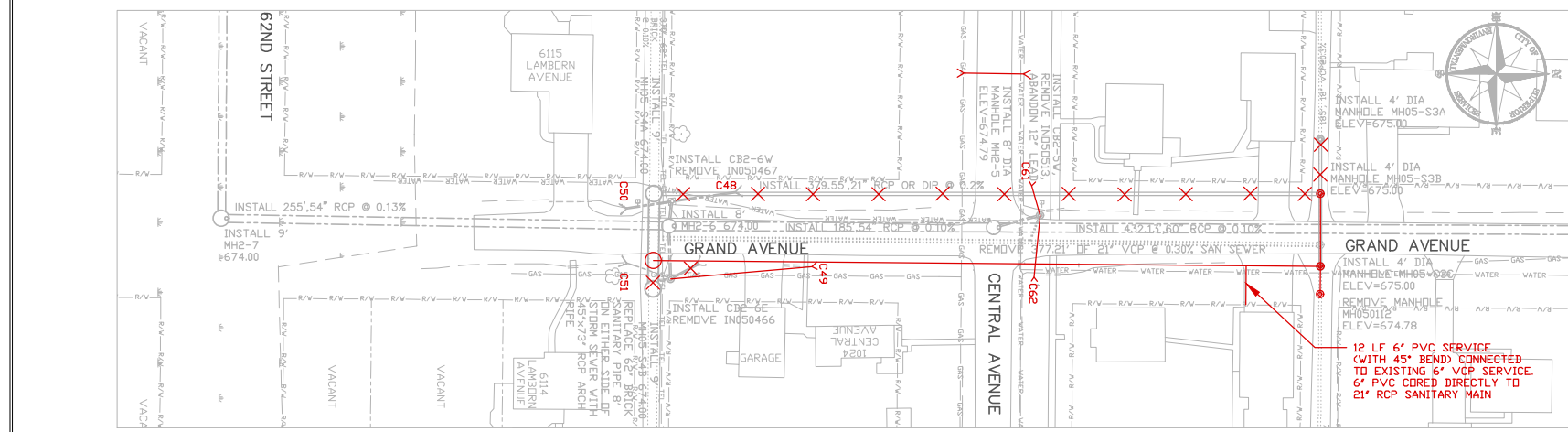
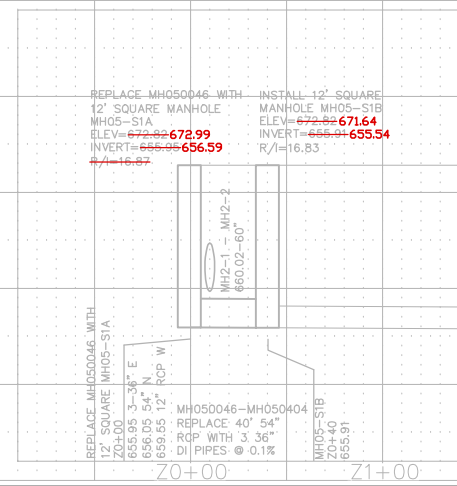
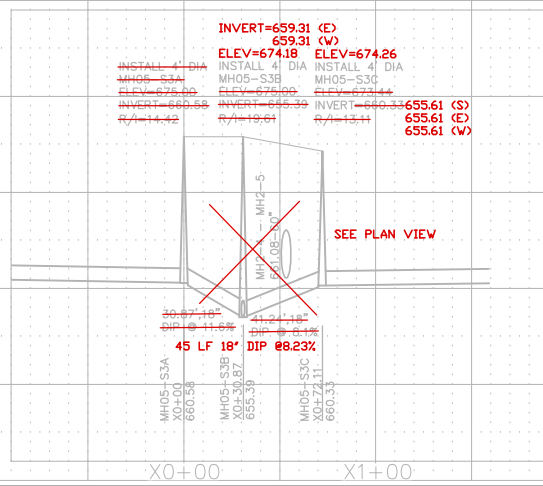
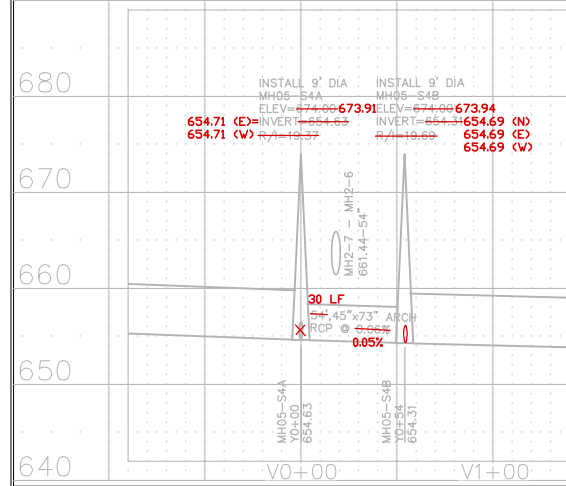
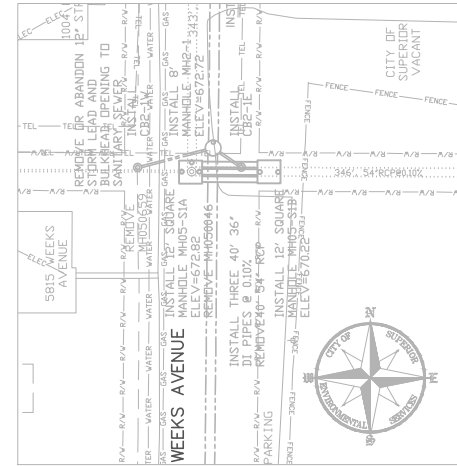
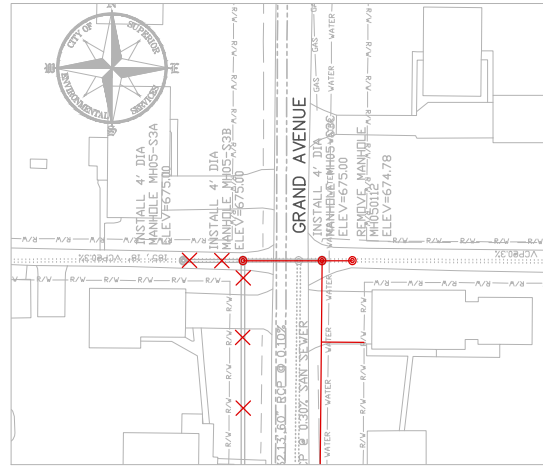
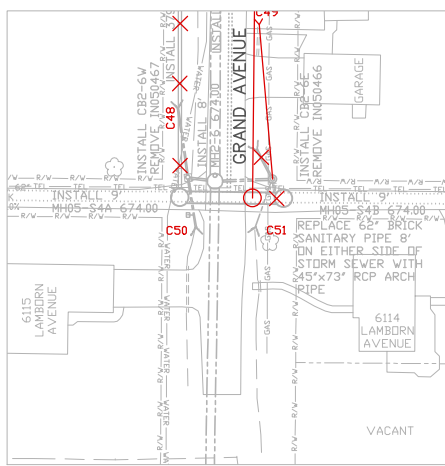
RECORD DRAWINGS
UPDATED 11/2013

SOUTH SUPERIOR STORM SEWER, PHASE II

SEWER PLAN AND PROFILE DRAWING

SUPERIOR, WISCONSIN

DATE: AUGUST 21, 2009	PLANS FOR CONSTRUCTION	ST5.2
DESIGN: SSR	DATE: 05/05/18	
APPROV: D		



1"=50' HORZ.
1"=10' VERT.
FOR 22"x34" SHEETS

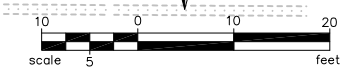
RECORD DRAWINGS
UPDATED 11/2013

SOUTH SUPERIOR STORM SEWER, PHASE II

SEWER PLAN AND PROFILE DRAWING

SUPERIOR, WISCONSIN

DATE: AUGUST 21, 2009
DESIGN: SGR
DRAWN: SGT
APPROVED: SGR
PLANS FOR CONSTRUCTION
DATE: 05/05/18
SAL:2



NOTES:

ALL POINTS LABELED "AEW" ARE TO THE EDGE OF APRON END WALL

ALL PIPE LENGTHS SHOWN INCLUDE LENGTH OF APRON ENDWALL

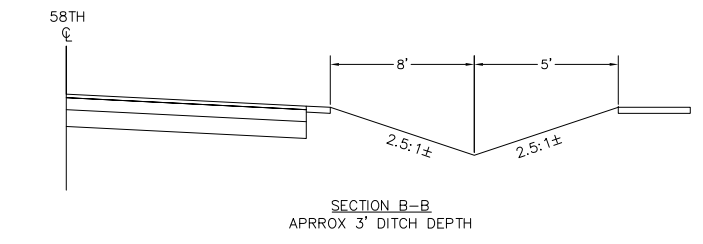
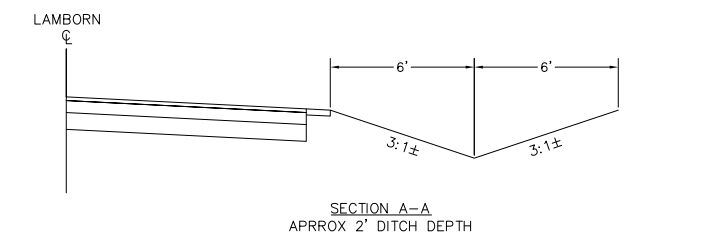
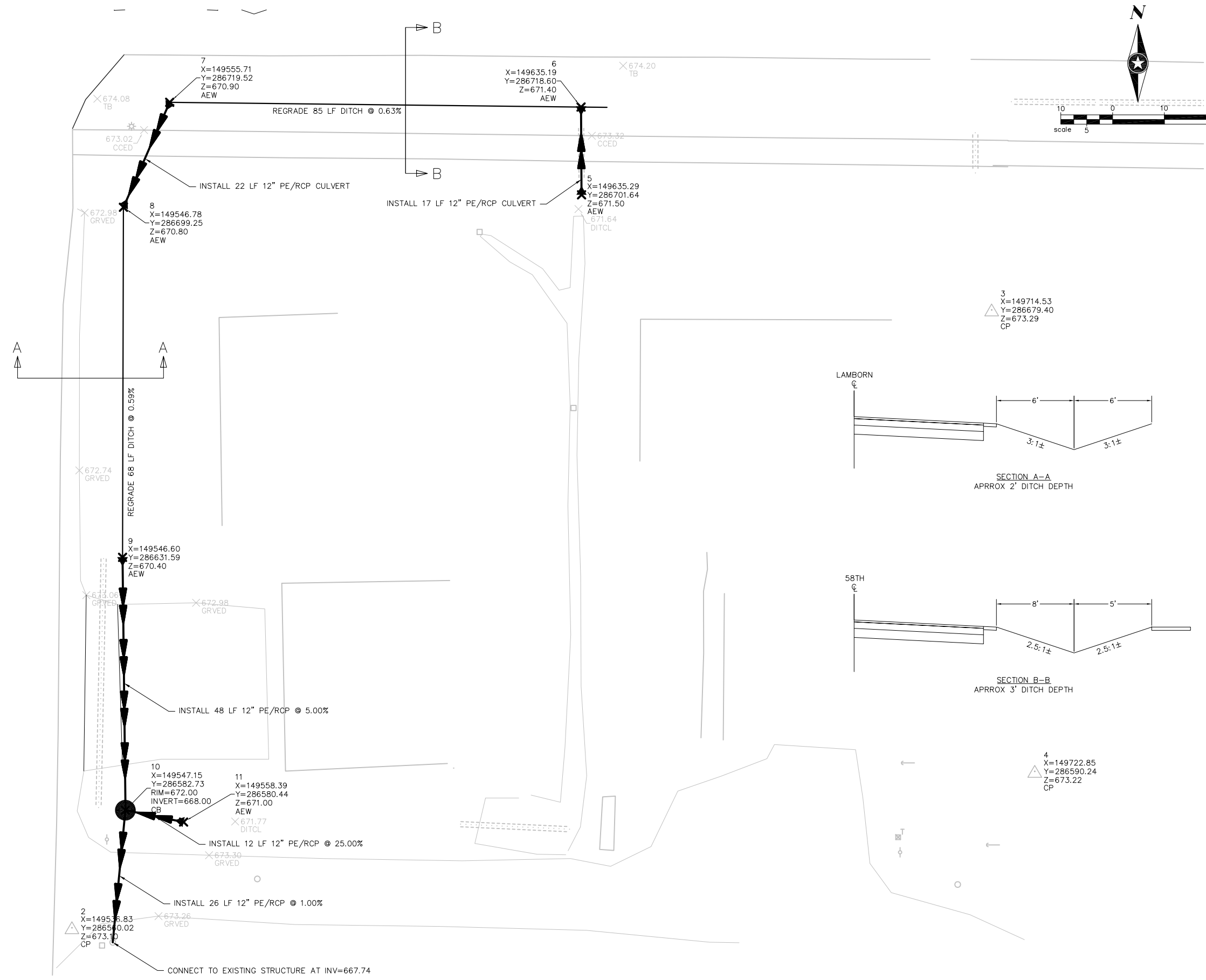
ALL REMOVALS ARE CONSIDERED INCIDENTAL

ALL DISTURBED AREAS SHALL BE RESTORED TO THEIR ORIGINAL CONDITION, INCLUDING SIDEWALK AND DRIVEWAYS

ADDITIONAL SHAPING MAY BE REQUIRED AROUND APRON ENDWALLS TO MEET EXISTING GRADES. THIS IS SHAPING IS CONSIDERED INCIDENTAL TO THE INSTALLATION OF THE ENDWALL

REFER TO SOUTH SUPERIOR STORM AND ROAD PLANS FOR ADDITIONAL INFORMATION INCLUDING EXISTING UTILITIES

ESTIMATED QUANTITIES		
Item	Est Quant	Unit
Ditching	153	LF
12" PE/RCP	125	LF
Apron Endwall	6	EA
4' Catch Basin	1	EA
Sidewalk	15	SY
Connect to Existing Manhole	1	EA
Gravel Restoration	60	SY
Undeveloped Restoration	450	SY



S:\PT\S\SUPEW\110601\5-dsgn\51-cadd\Civil\Civil_3D\Drainage Improvements.dwg 9/30/2011 9:20 AM dhinzmann

DRAWN BY: DRH				
DESIGNER: DRH				
CHECKED BY: -				
DESIGN TEAM	NO.	BY	DATE	REVISIONS

PHONE: 218.279.3000
418 W SUPERIOR ST STE 200
DULUTH, MN 55802-1512
www.sehinc.com

**SUPERIOR,
WISCONSIN**

**DRAINAGE IMPROVEMENTS
LAMBORN / 58TH**

FILE NO. -
SUPEW 110601 -