

ARCHITECTURAL
RESOURCES • INC.

- ARCHITECTURE
- ENGINEERING
- LANDSCAPE ARCHITECTURE
- INTERIOR DESIGN

WEB SITE www.arinm.com

70+ EAST HOWARD STREET
HIBBING, MINN. 55746
PHONE 218-263-6868
FAX 218-722-6803
EMAIL archres@arinm.com

126 EAST SUPERIOR STREET
DULUTH, MINN. 55802
PHONE 218-727-8481
FAX 218-727-8483
EMAIL archres@pnetnet.com

1323 BROADWAY STREET
SUPERIOR, WISCONSIN 54880
PHONE 715-398-0137
FAX 218-727-8483
EMAIL archres@pnetnet.com

OUR SAVIOR'S
LUTHERAN CHURCH
ADDITION & REMODEL

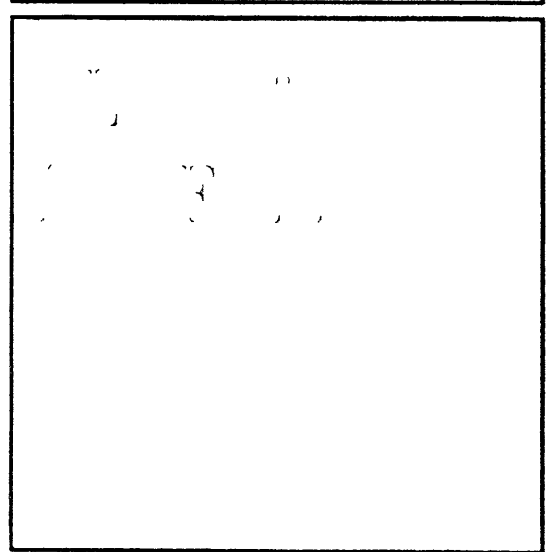
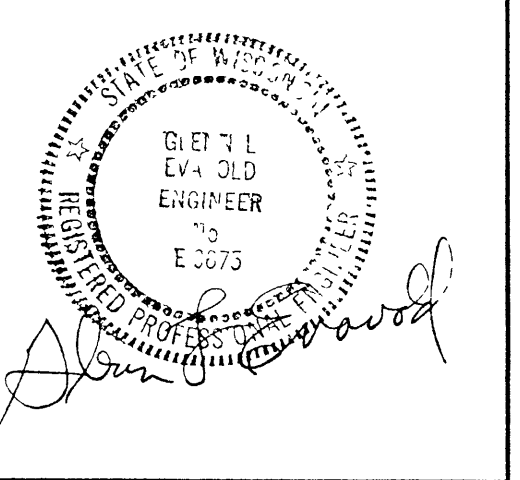
1924 WYOMING AVE
SUPERIOR WISCONSIN

PROJECT NO 01-157

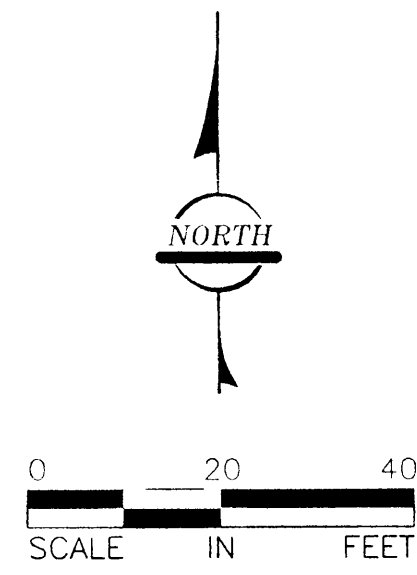
DATE 5 AUG 2003

DRAWN

REVISIONS



C
1.0

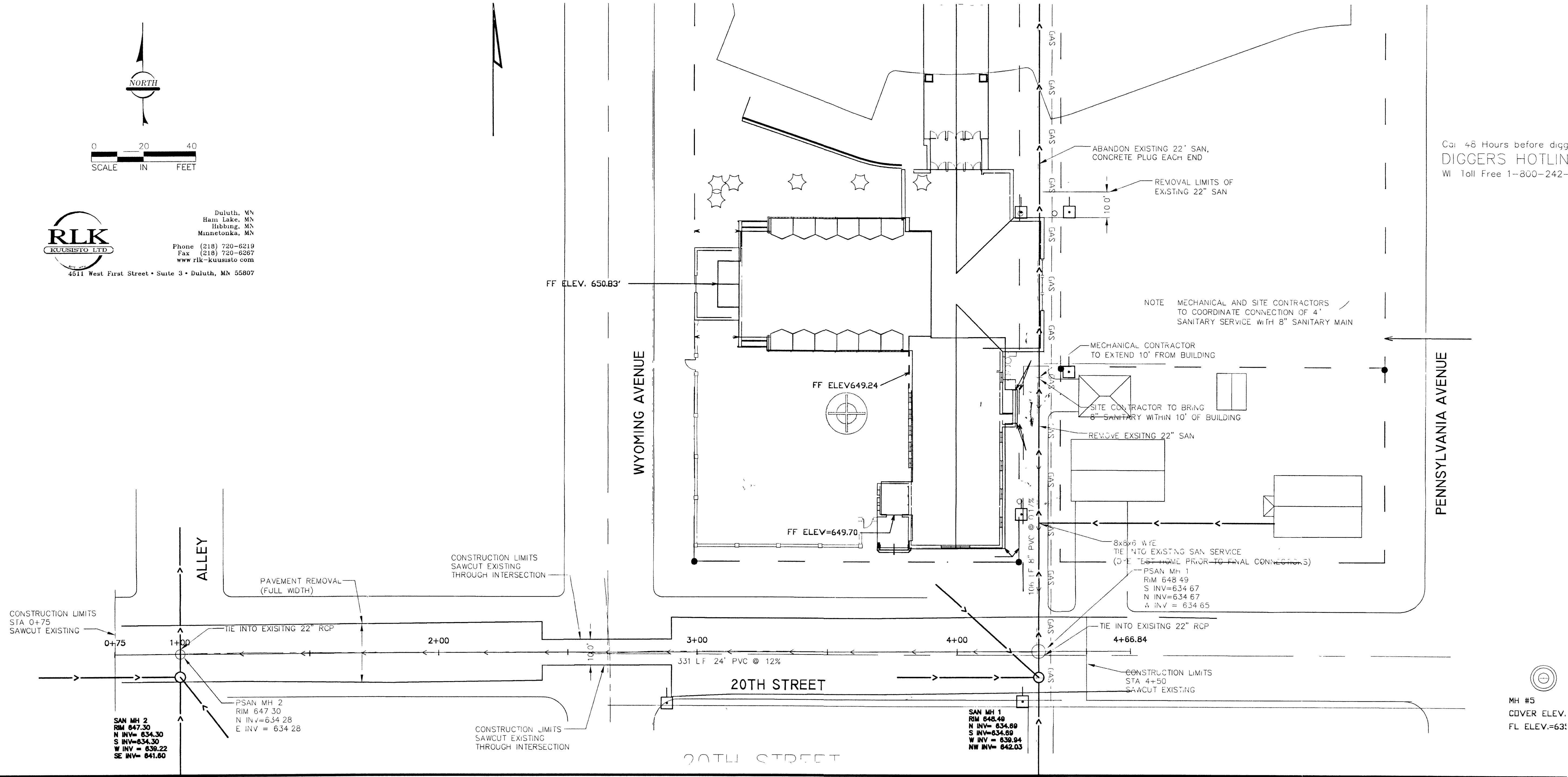


RLK
KUISISTO LTD.

Duluth, MN
Ham Lake, MN
Hibbing, MN
Minnetonka, MN

Phone (218) 720-6219
Fax (218) 720-6267
www.rlk-kuisisto.com

4511 West First Street • Suite 3 • Duluth, MN 55807



Call 48 Hours before digging
DIGGERS HOTLINE
WI Toll Free 1-800-242-8511

NOTE MECHANICAL AND SITE CONTRACTORS
TO COORDINATE CONNECTION OF 4"
SANITARY SERVICE WITH 8" SANITARY MAIN

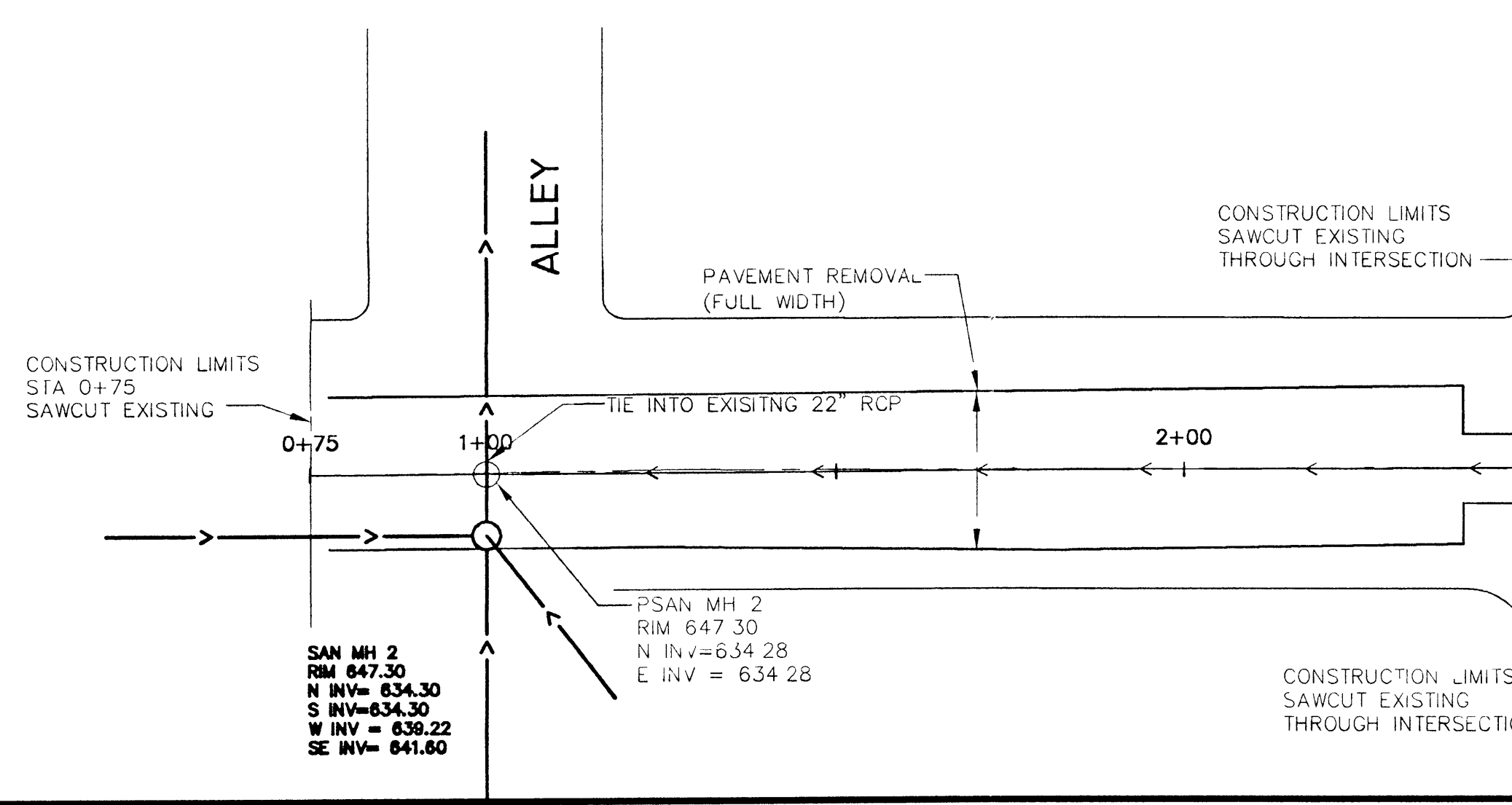
MECHANICAL CONTRACTOR
TO EXTEND 10' FROM BUILDING

SITE CONTRACTOR TO BRING
8" SANITARY WITHIN 10' OF BUILDING

REMOVE EXISTING 22" SAN

8x8x6 WYE
TIE INTO EXISTING SAN SERVICE
(DO NOT HAVE PRIOR TO FINAL CONNECTIONS)

PSAN MH 1
RIM 648.49
S INV=634.67
N INV=634.67
W INV = 634.65



MH #5
COVER ELEV.
FL ELEV.=63:

The drawings are prepared by the engineer and are not to be used for any other project without the written consent of the engineer.