

**BILLINGS VIEW ADDITION
SANITARY SEWER PLANS
SUPERIOR, WISCO.**

PROJECT TOTALS

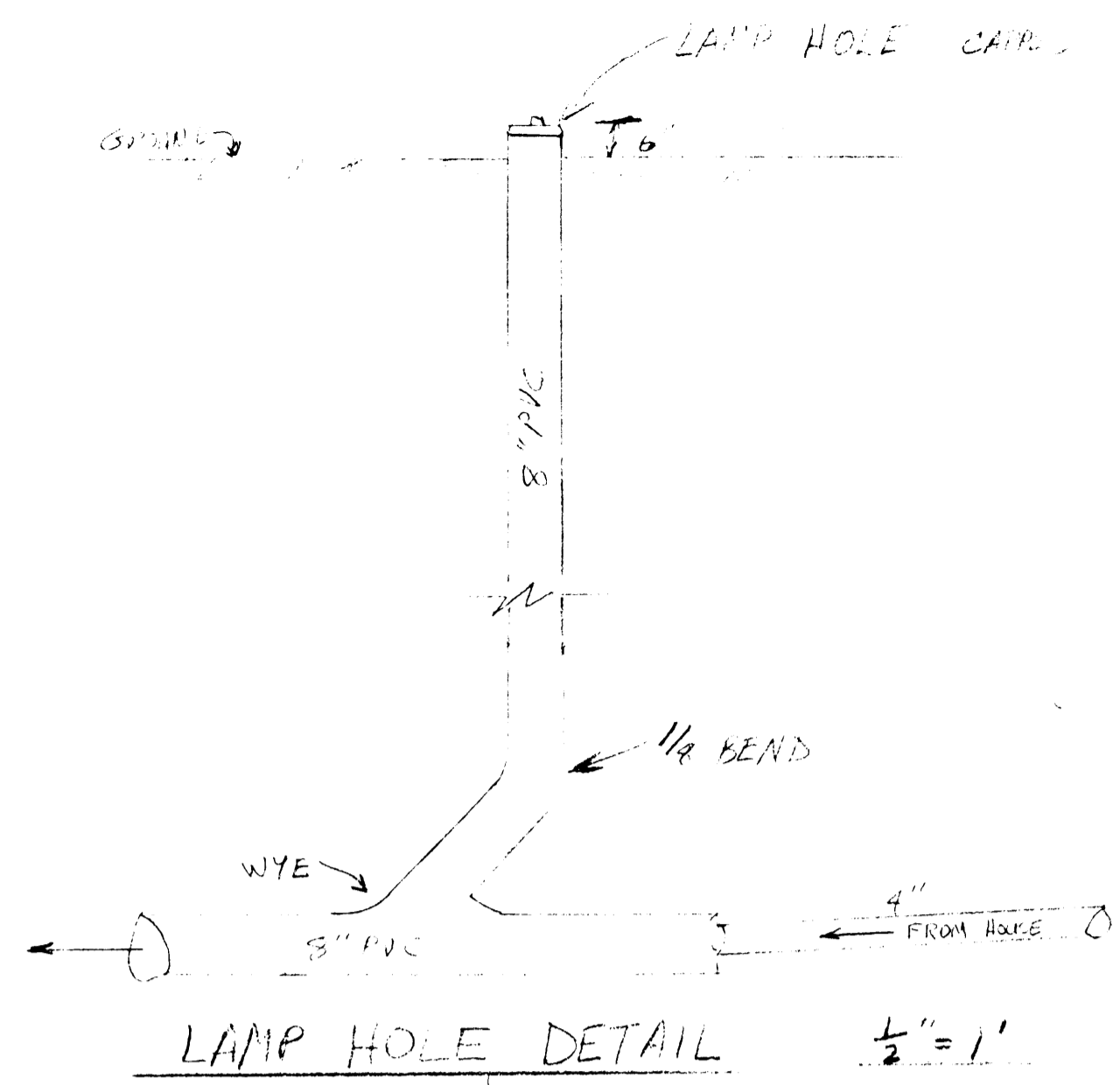
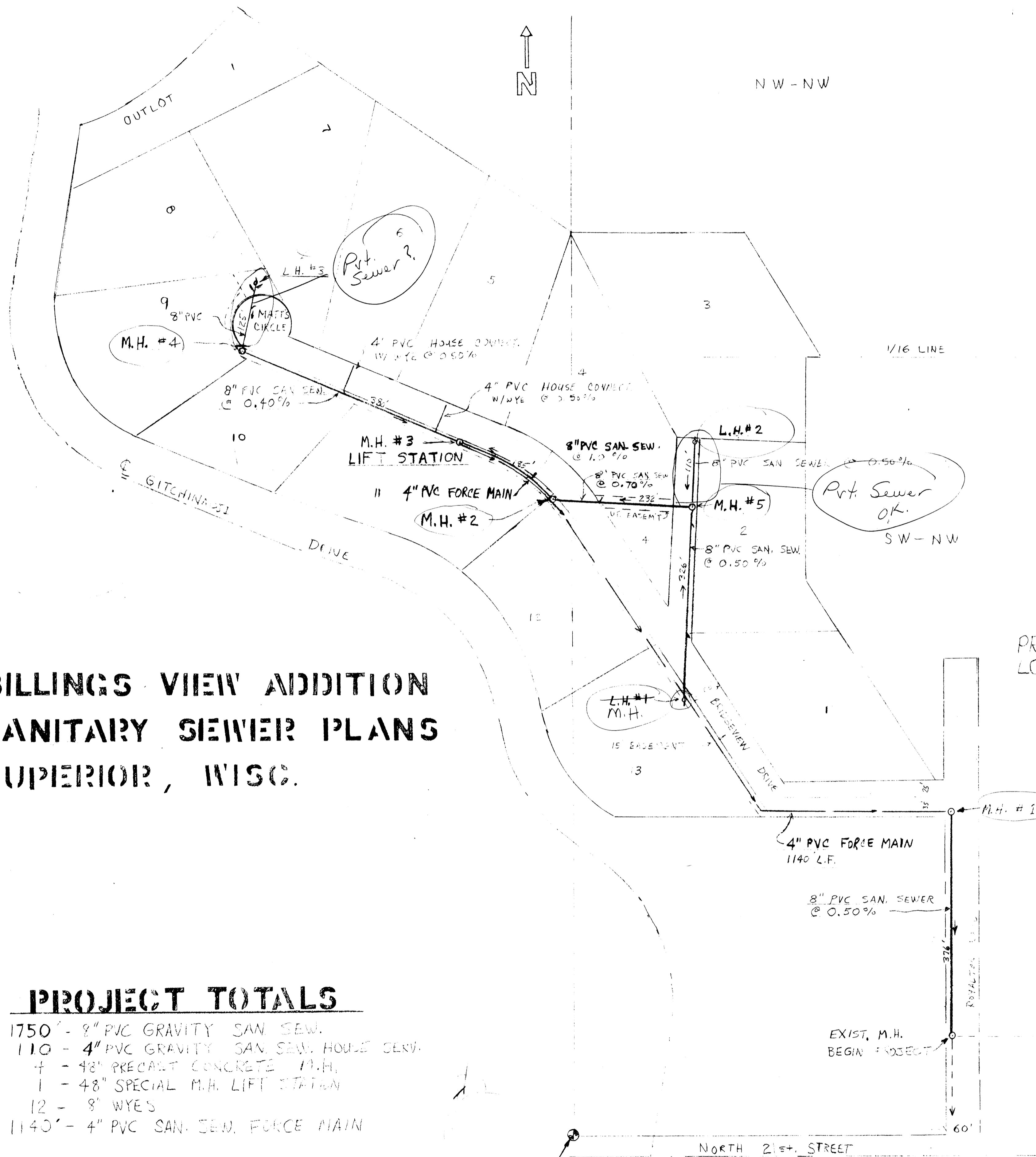
- 1750' - 8" PVC GRAVITY SAN SEW.
- 110' - 4" PVC GRAVITY SAN SEW. HOUSE SERV.
- 4 - 48" PRECAST CONCRETE M.H.
- 1 - 48" SPECIAL M.H. LIFT STATION
- 12 - 8" WYES
- 1140' - 4" PVC SAN. SEW. FORCE MAIN

E 1/4 COR SEC 20
T 49 N. R. 14 W

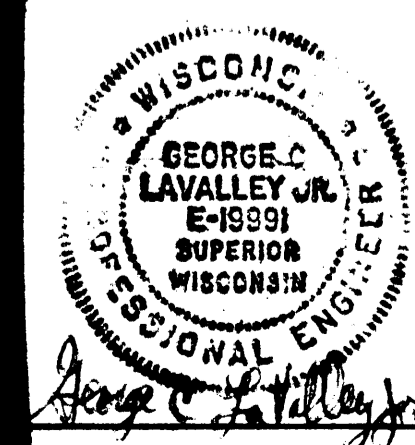
SCALE 1"=100'

SITE PLAN

APPROVED FOR
CITY OF SUPERIOR
Signe M. Peterson
DIRECTOR OF PUBLIC WORKS 5-9-88



PROJ
LOCA



SANITARY SEWER BILLINGSVIEW ADDITION			
CITY OF SUPERIOR WISC.			
GEORGE C. LAVALLEY, P.E.	SCALE 1"=100'	DRAWN BY G.C.L.	REVISED
8" PVC GRAVITY SEWER, 4" PVC FORCE MAIN AND 1 LIFT STATION			
DATE 5-6-88	APPROVED BY	DRAWING NUMBER 1 of 6	