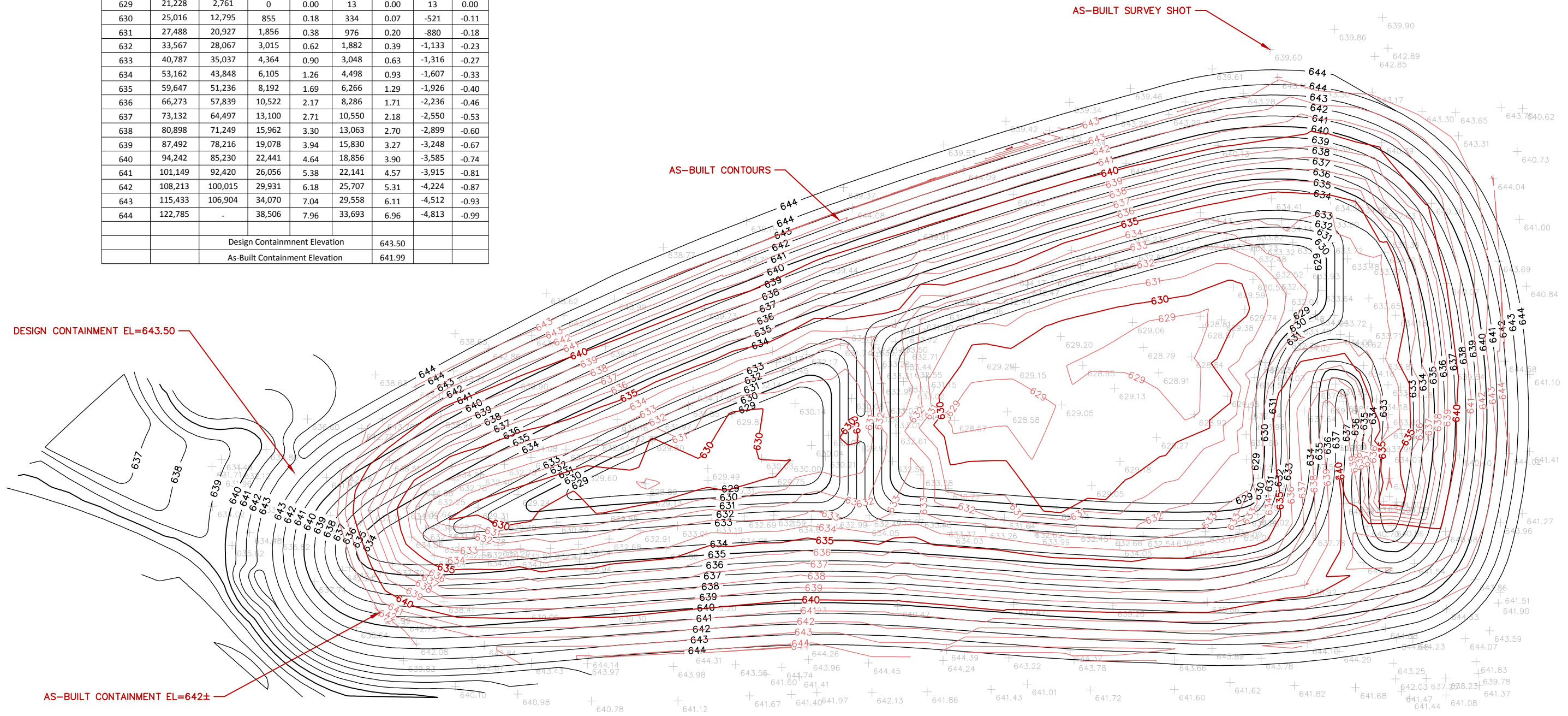




Total Storage As-Built Calculation								
Elevation	Contour Area (SF)		Cumulative Design Storage		Cumulative As-Built Storage		Difference	
	Design	As-Built	CY	Ac-Ft	CY	Ac-Ft	CY	Ac-Ft
629	21,228	2,761	0	0.00	13	0.00	13	0.00
630	25,016	12,795	855	0.18	334	0.07	-521	-0.11
631	27,488	20,927	1,856	0.38	976	0.20	-880	-0.18
632	33,567	28,067	3,015	0.62	1,882	0.39	-1,133	-0.23
633	40,787	35,037	4,364	0.90	3,048	0.63	-1,316	-0.27
634	53,162	43,848	6,105	1.26	4,498	0.93	-1,607	-0.33
635	59,647	51,236	8,192	1.69	6,266	1.29	-1,926	-0.40
636	66,273	57,839	10,522	2.17	8,286	1.71	-2,236	-0.46
637	73,132	64,497	13,100	2.71	10,550	2.18	-2,550	-0.53
638	80,898	71,249	15,962	3.30	13,063	2.70	-2,899	-0.60
639	87,492	78,216	19,078	3.94	15,830	3.27	-3,248	-0.67
640	94,242	85,230	22,441	4.64	18,856	3.90	-3,585	-0.74
641	101,149	92,420	26,056	5.38	22,141	4.57	-3,915	-0.81
642	108,213	100,015	29,931	6.18	25,707	5.31	-4,224	-0.87
643	115,433	106,904	34,070	7.04	29,558	6.11	-4,512	-0.93
644	122,785	-	38,506	7.96	33,693	6.96	-4,813	-0.99
Design Containment Elevation					643.50			
As-Built Containment Elevation					641.99			



# BILLINGS PARK POND AS-BUILT

S:\PT\5\SUPEW\110600\5-dsgn\51-cadd\Civil\Civil\_3D\Exhibit\Pond As Built Exhibit.dwg 8/16/2013 12:13 PM dhinzmann

DRAWN BY: DRH  
 SURVEYOR: SM

NO.	BY	DATE	REVISIONS

**SEH**  
 PHONE: 218.279.3000  
 418 W SUPERIOR ST STE 200  
 DULUTH, MN 55802-1512  
 www.sehinc.com

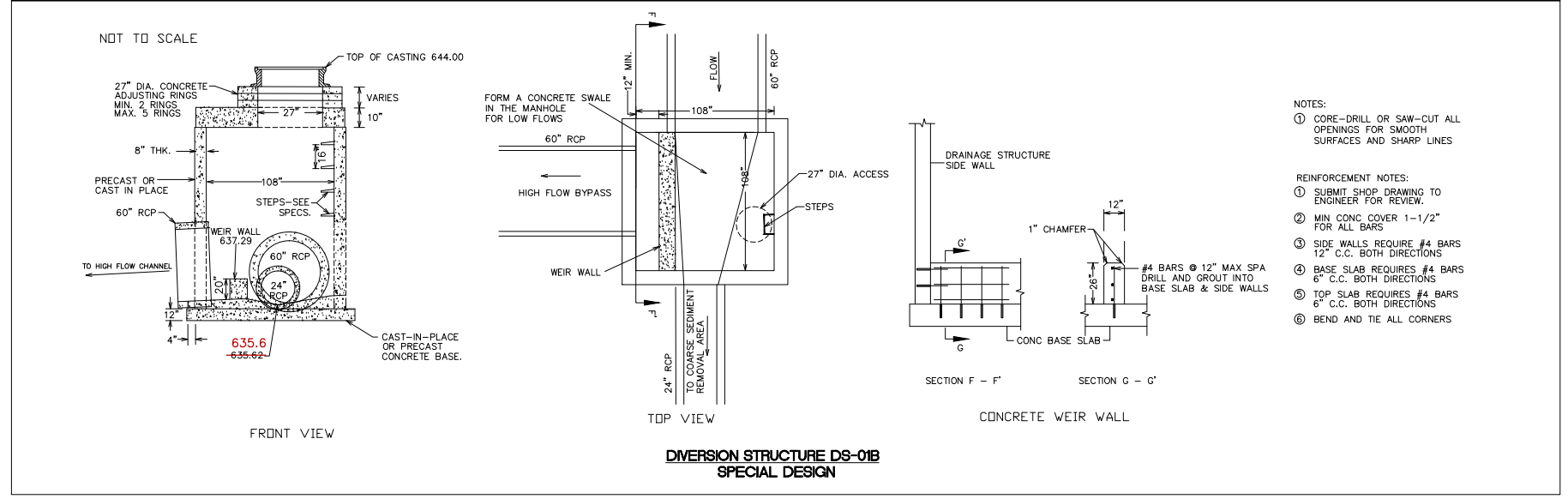
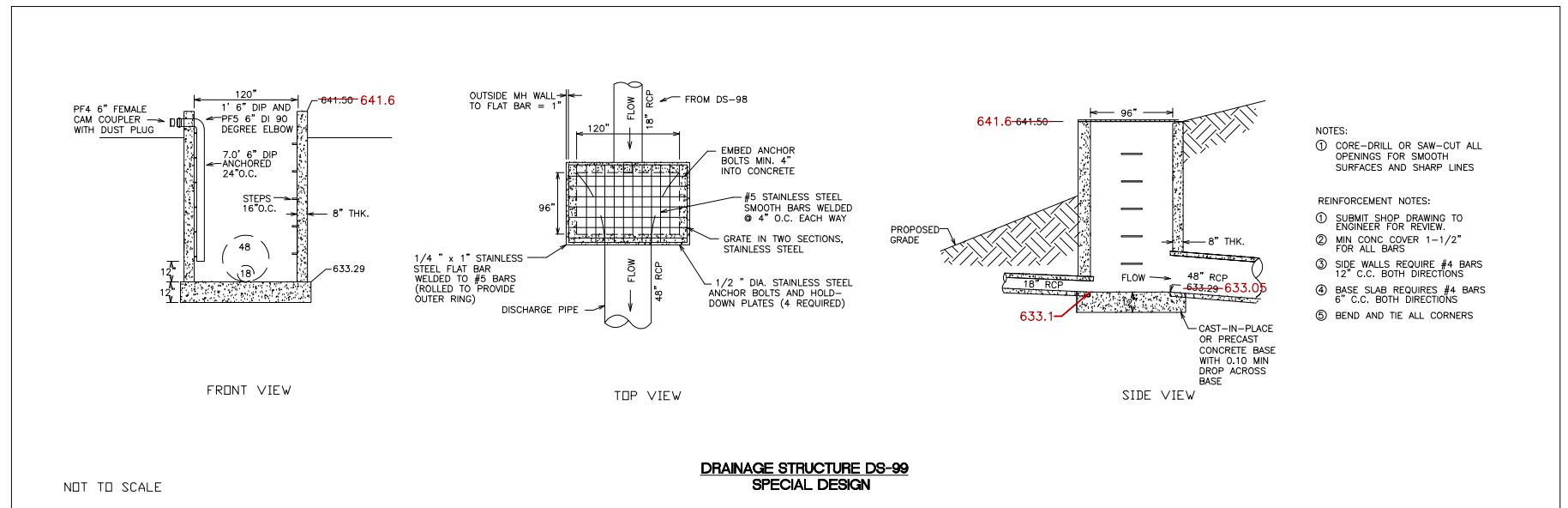
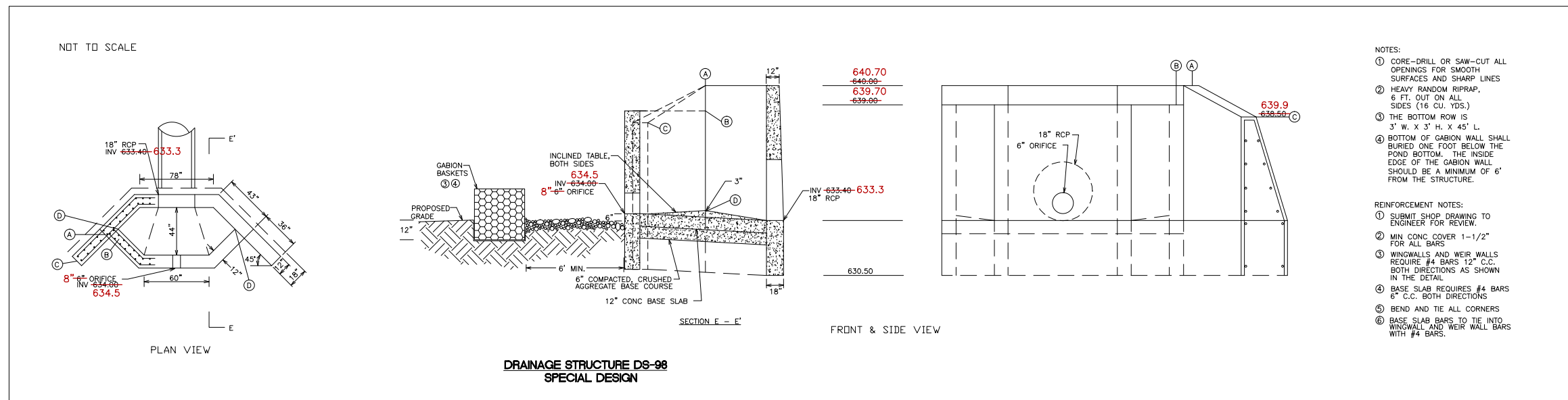
**SUPERIOR,  
 WISCONSIN**

**POND AS-BUILT  
 BILLINGS PARK STORM SEWER**

FILE NO.  
 SUPEW 110600

1  
 2

S:\PT\5\SUPEW\110600\5-dsgn\51-cadd\Civil\3D\Exhibit\Pond As Built Exhibit.dwg 8/16/2013 12:13 PM dhinzmann



# BILLINGS PARK POND STRUCTURES AS-BUILT

DRAWN BY: DRH  
 SURVEYOR: SM

NO.	BY	DATE	REVISIONS

PHONE: 218.279.3000  
 418 W SUPERIOR ST STE 200  
 DULUTH, MN 55802-1512  
 www.sehinc.com

**SUPERIOR,  
 WISCONSIN**

**POND STRUCTURES AS-BUILT  
 BILLINGS PARK STORM SEWER**

FILE NO.  
 SUPEW 110600

2  
 2