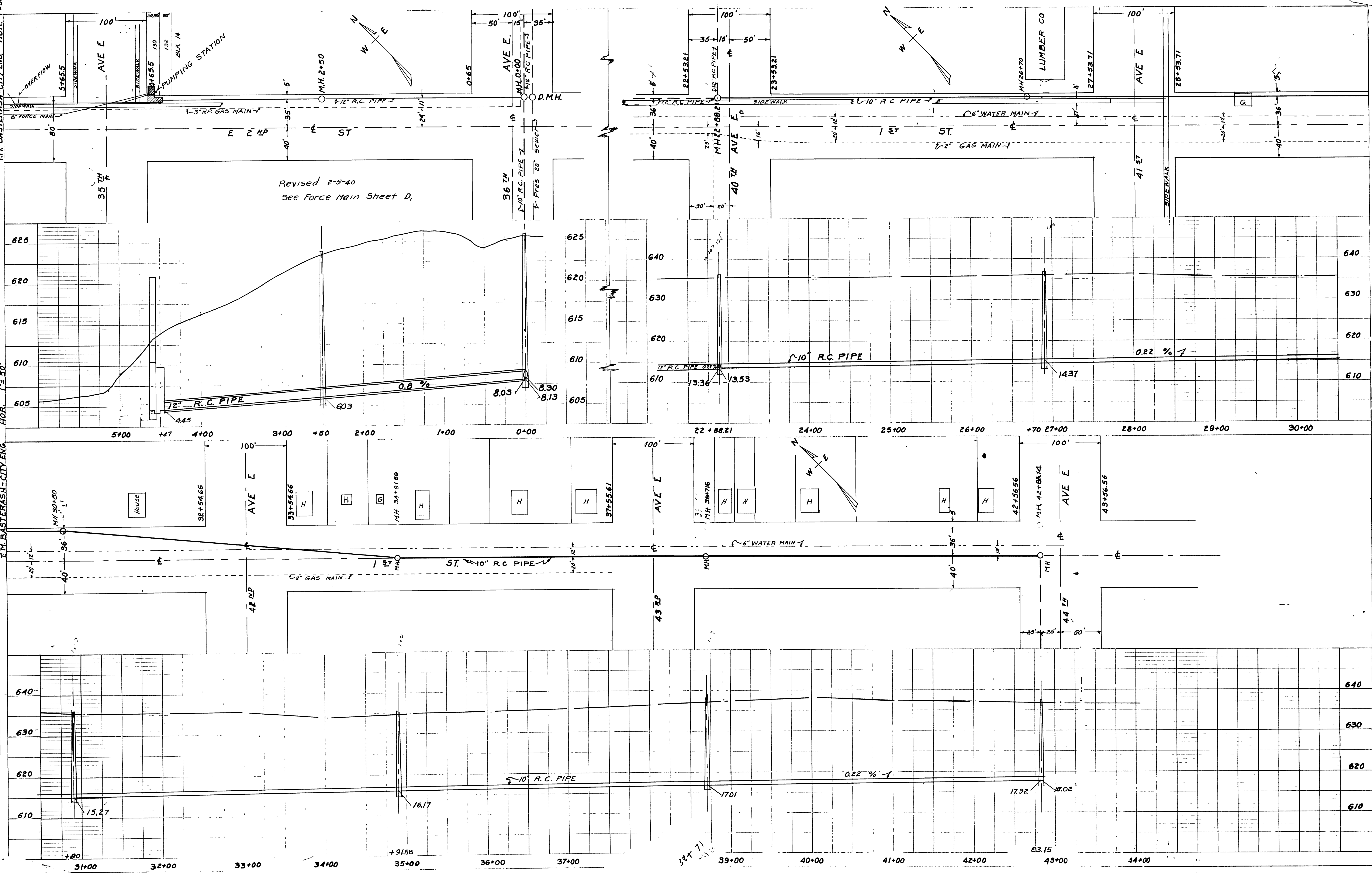


CITY OF SUPERIOR  
 ENG. DEPT.  
 INTERCEPTOR SEWER IN  
 ALLOUEZ (2<sup>ND</sup> & 36<sup>TH</sup> AVE)  
 JAN. 27, 1940 SCALE: VERT. 1"=5'  
 T.M. BASTENASH-CITY ENG. HOR. 1"=50'

CITY OF SUPERIOR  
 ENG. DEPT.  
 INTERCEPTOR SEWER IN  
 ALLOUEZ (1<sup>ST</sup> ST & 41<sup>ST</sup> AVE)  
 JAN. 29, 1940 SCALE: VERT. 1"=5'  
 T.M. BASTENASH-CITY ENG. HOR. 1"=50'

PLAN	NO.
SURVEYED	
PLOTTED	
ALIGNMENT CHECKED	
RT. OF WAY CHECKED	

PROFILE	NO.
SURVEYED	
GRADES CHECKED	
B. M'S. NOTED	
STRUCTURE NOTATIONS CHECKED	



Revised 2-5-40  
 See Force Main Sheet D,