

OLD CONCRETE FOUNDATION FOOTINGS ENCOUNTERED OBSTRUCTING PATH OF NEW FORCE MAIN. CONTRACTOR REMOVED FOOTINGS.

CONNECT TO EXISTING 6" DI FORCE MAIN AT EXISTING TRANSITION FROM DI TO CI SEE DETAIL

CAP END OF ABANDONED FORCEMAIN

LIFT STATION 7

NOTIFY SWLP IF SECURING OF EXISTING UTILITY POLE IS REQUIRED

45 DEG. FITTING USED FOR CONNECTION TO EXISTING DUCTILE IRON FORCE MAIN

MOLDED 45° BEND. (INCIDENTAL) DEFLECTION OF PIPING WITHOUT USE OF BEND WILL BE ACCEPTED.

REMOVE 71 LF EXISTING 6" FORCEMAIN (EXISTING IS ATTACHED TO BRIDGE) CAP AT ENDS HEATING ELEMENT REMOVED FROM EXISTING. SEE DETAIL BOX LOCATED ON SOUTH WING WALL

MAINTAIN CLEARANCE FROM LIGHT BASE (TYP.)

MAINTAIN 5' CLEAR FROM RIGHT OF WAY BOUNDARY

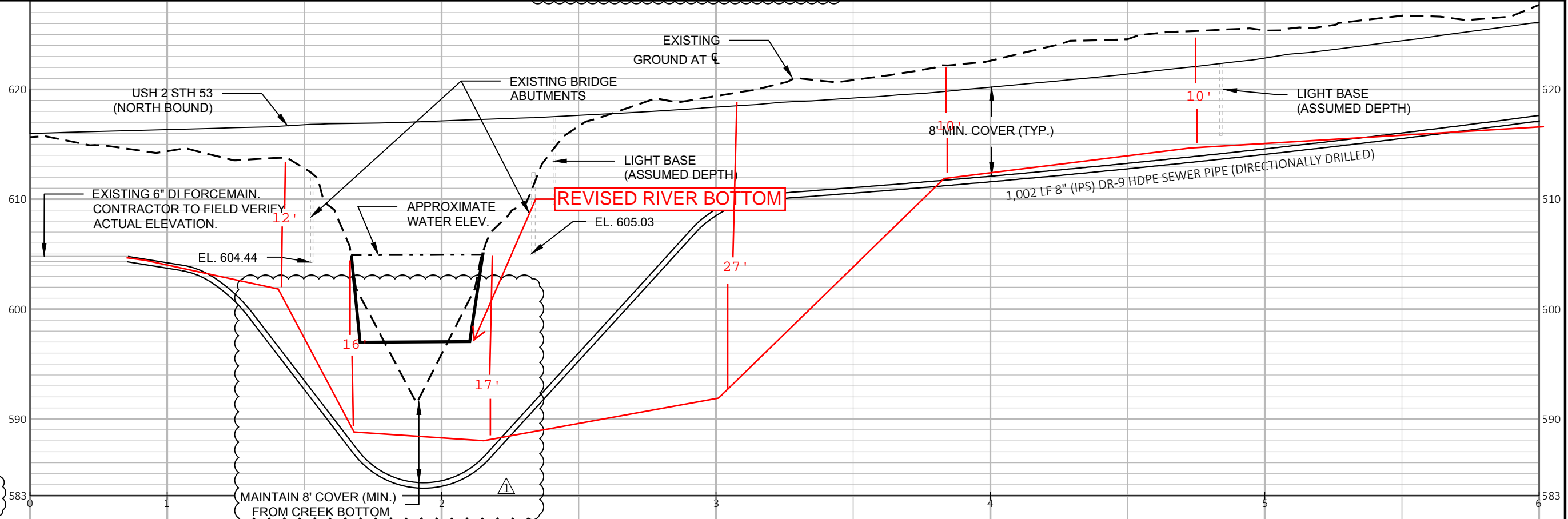
BLUFF CREEK

APPROXIMATE BORE PIT LOCATION

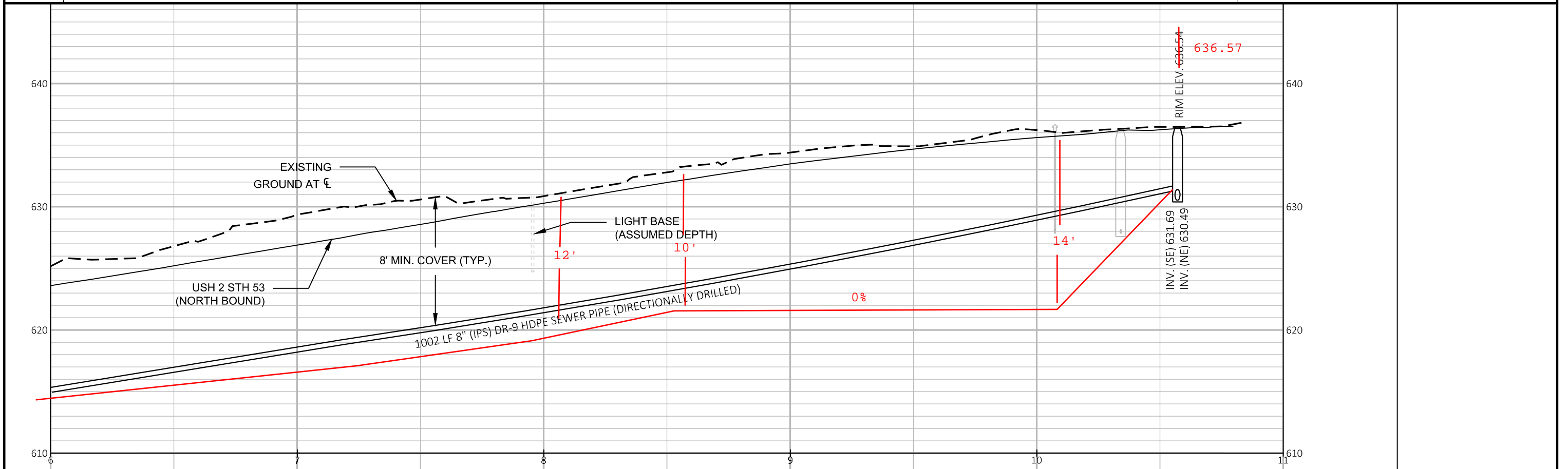
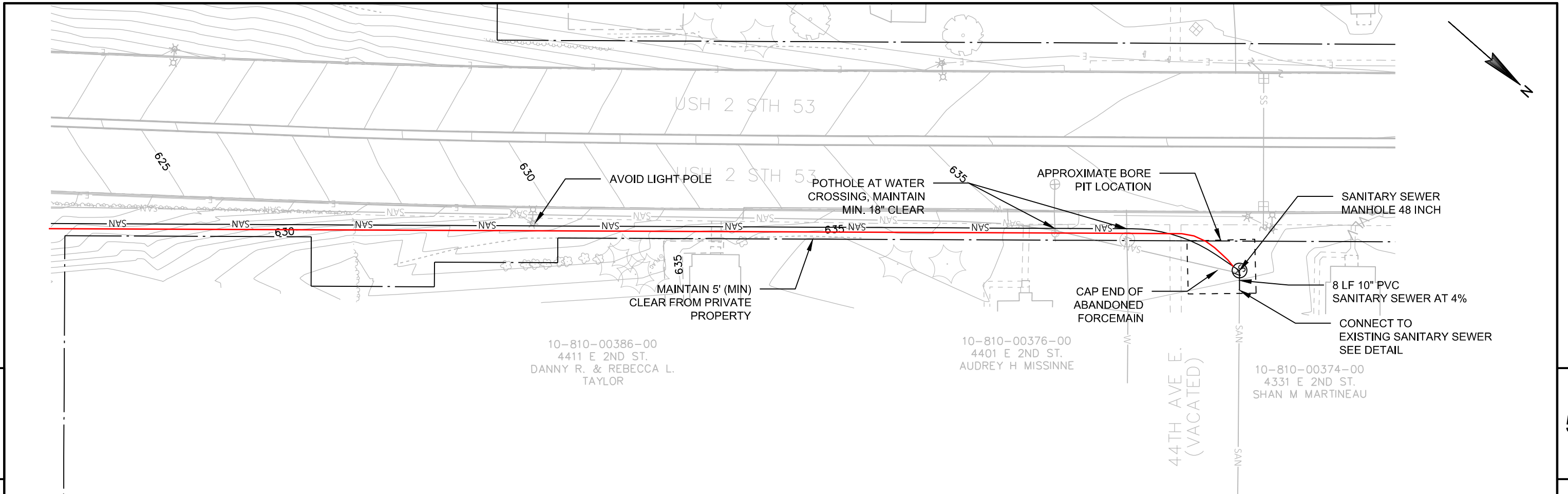
TALL GRASS/BRUSH AREA

COMPLETED NOVEMBER, 2019

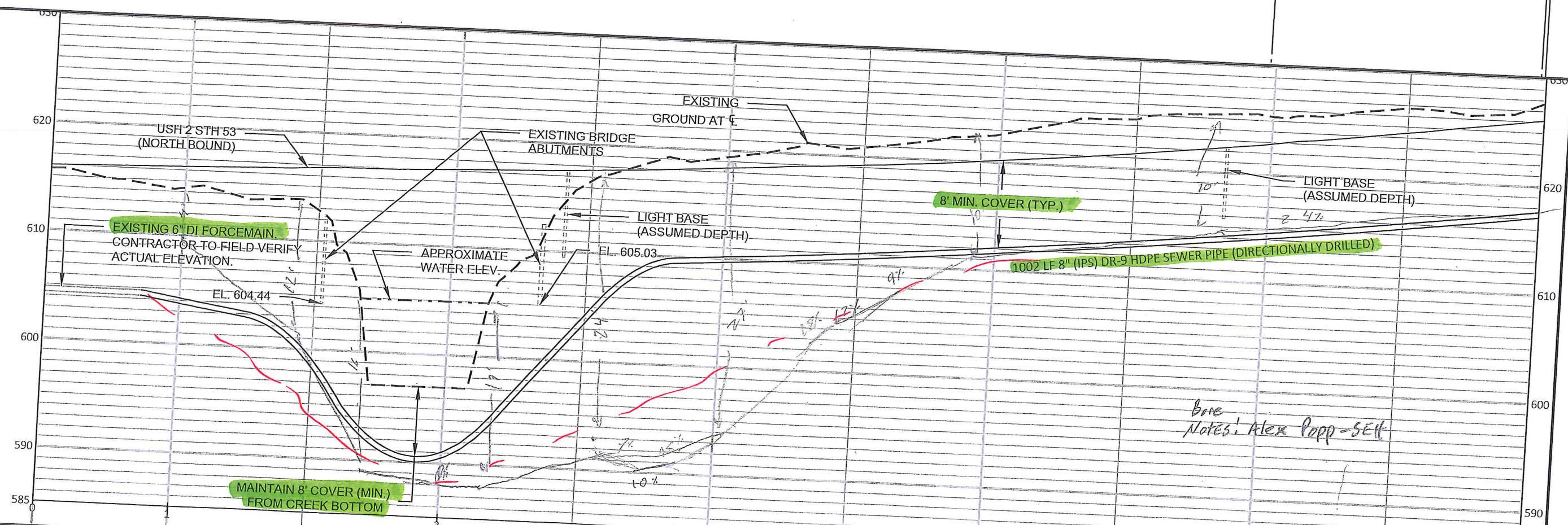
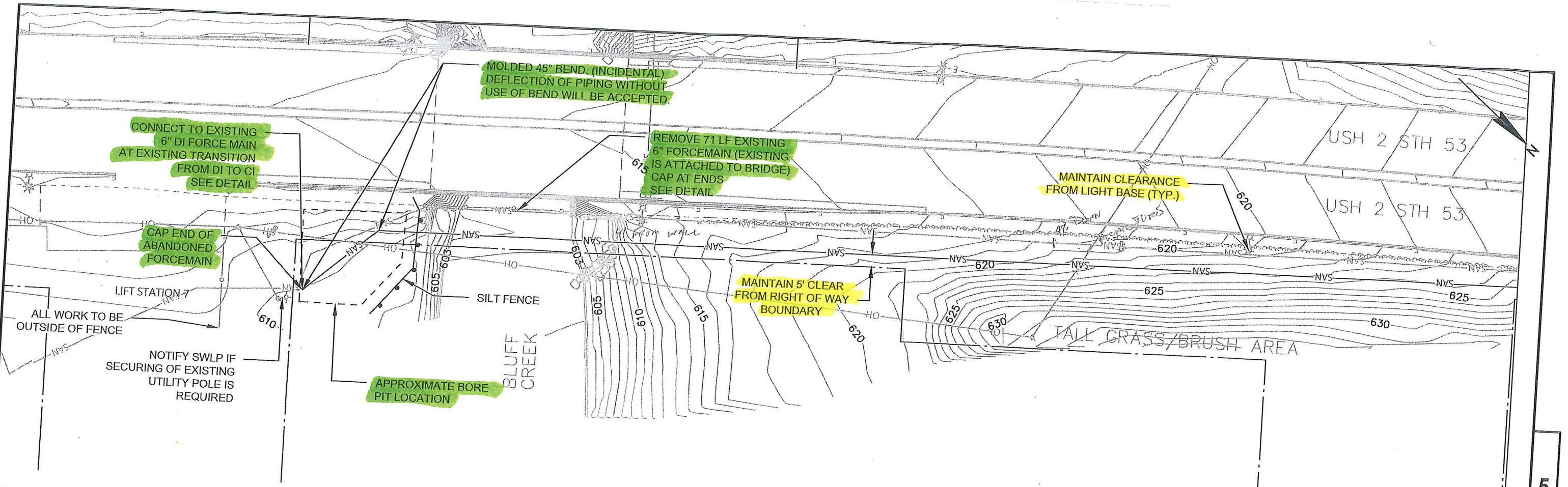
NOTE: CONTRACTOR TO VERIFY STREAM DEPTH PRIOR TO DRILLING OPERATIONS. (INCIDENTAL)

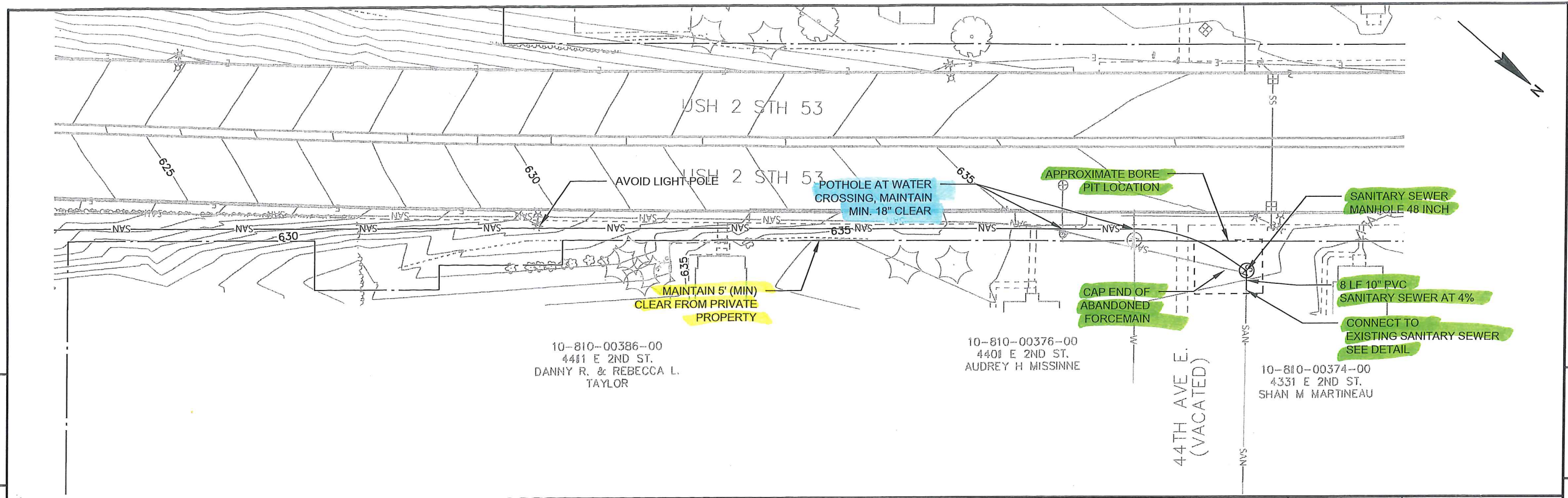


REVISD STREAM DEPTH 09/19/2019



PROJECT NO: SUPER 151805 LIFT STATION 7 CITY OF SUPERIOR PLAN AND PROFILE SHEET 6 OF 6 E





5

5



All DATUMS FROM SURFACE
 Ground +3' ABOVE SEWERS
 Bore Notes: Alex Pop - SET