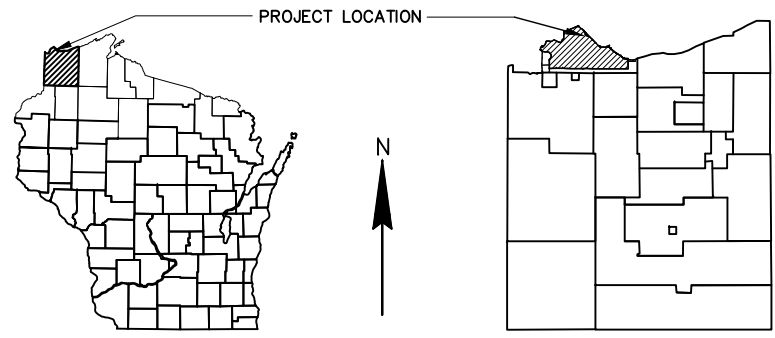


CITY OF SUPERIOR, WISCONSIN

ENVIRONMENTAL SERVICES DIVISION OF PUBLIC WORKS

ITASCA EAST 2ND INTERCEPTOR HYDROGEN SULFIDE SANITARY SEWER REHABILITATION

CONSTRUCTION PLAN FOR: CURED-IN-PLACE PIPE LINING



SHEET INDEX

- 1 TITLE
- 2 OVERVIEW
- 3 ESTIMATED QUANTITIES
- 4 HWY 2 PIPE PLAN & PROFILE 0+00 - 4+75
- 5 HWY 2 PIPE PLAN & PROFILE 5+00 - 9+75
- 6 HWY 2 PIPE PLAN & PROFILE 10+00 - 14+50
- 7 HWY 2 PIPE PLAN & PROFILE 14+75 - 19+50
- 8 HWY 2 PIPE PLAN & PROFILE 19+75 - 24+50
- 9 HWY 2 PIPE PLAN & PROFILE 24+75 - 29+25
- 10 HWY 2 PIPE PLAN & PROFILE 29+50 - 34+25
- 11 HWY 2 PIPE PLAN & PROFILE 34+50 - 36+91
- 12 54TH AVENUE EAST PLAN & PROFILE 0+00 - 4+75
- 13 54TH AVENUE EAST PLAN & PROFILE 5+00 - 6+13

LEGEND



UTILITIES

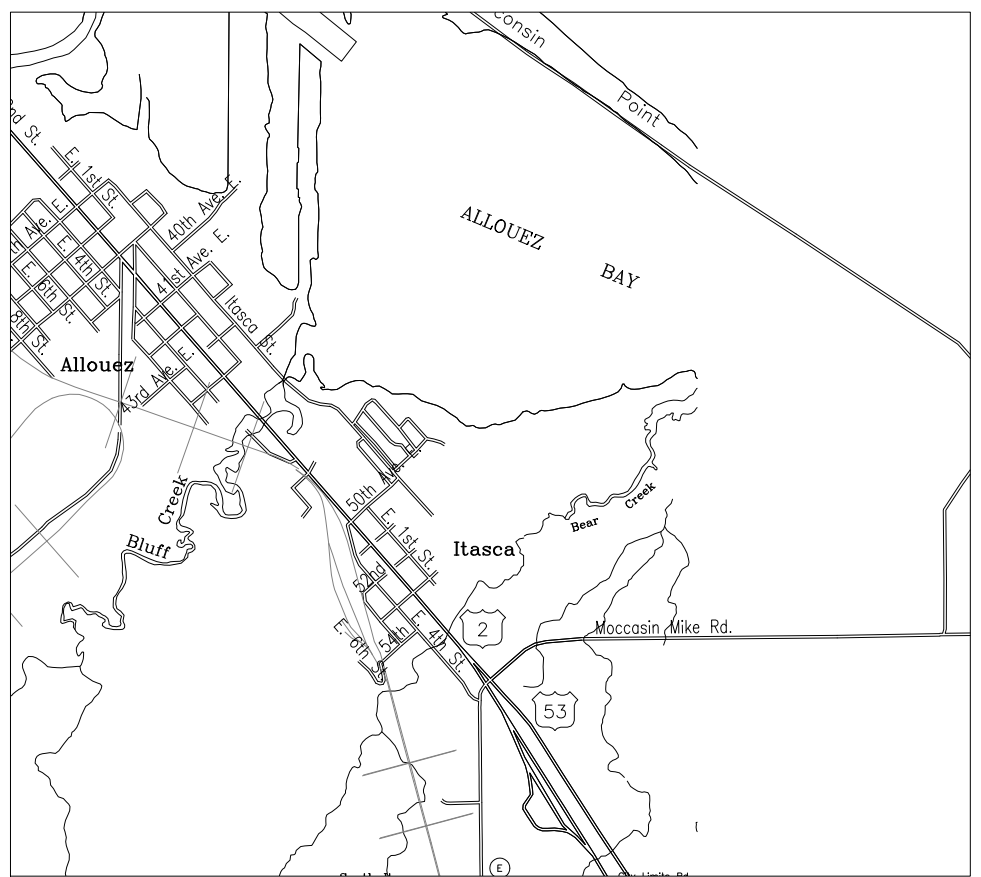
SUPERIOR WATER, LIGHT & POWER CO.
 GAS & WATER
 TROY AUNE
 2915 HILL AVENUE
 P.O. BOX 519
 SUPERIOR, WI 54880
 218-395-6346
TAUNE@SWLP.COM

SUPERIOR WATER, LIGHT & POWER CO.
 ELECTRIC
 AARON ANDERSON
 2915 HILL AVENUE
 P.O. BOX 519
 SUPERIOR, WI 54880
 715-395-6227
ASANDERSON@SWLP.COM

CENTURYLINK
 RUSSELL VANCE
 135 N. 21ST STREET
 SUPERIOR, WI 54880
 715-392-0045
RUSSELL.VANCE@CENTURYLINK.COM

CITY OF SUPERIOR PUBLIC WORKS
 TODD JANIGO
 1316 NORTH 14TH STREET
 SUPERIOR, WI 54880
 715-395-7373
JANIGOT@CI.SUPERIOR.WI.US

CITY OF SUPERIOR
 ENVIRONMENTAL SERVICES DIVISION
 (SANITARY & STORM)
 ERIN ABRAMSON
 51 EAST 1ST STREET
 SUPERIOR, WI 54880
 715-394-0392
ABRAMSONE@CI.SUPERIOR.WI.US



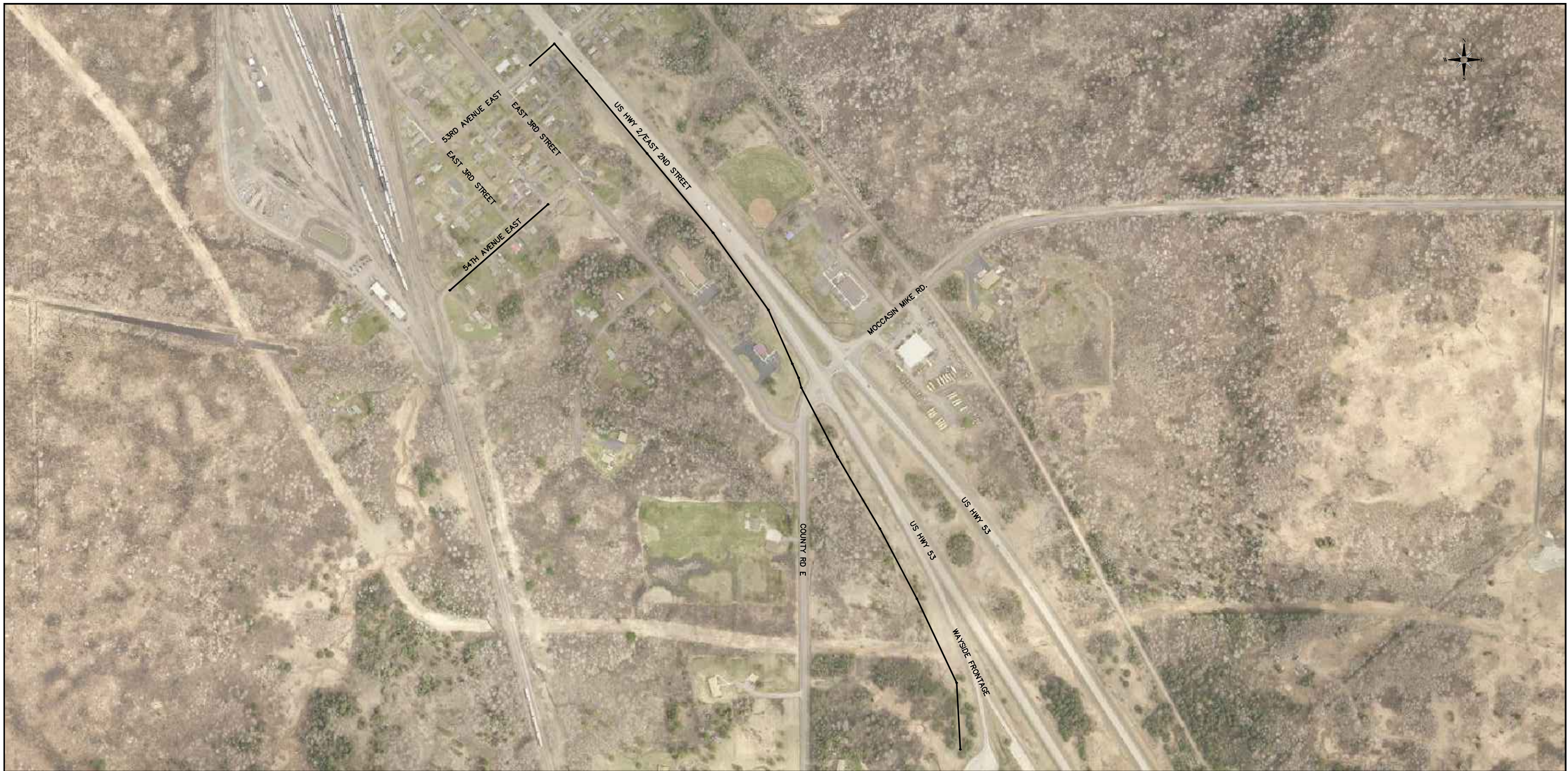
LOCATION MAP

CITY OF SUPERIOR
NO SCALE

GOVERNING SPECIFICATIONS:
 THE STANDARD SPECIFICATIONS FOR SEWER & WATER CONSTRUCTION IN WISCONSIN, SIXTH EDITION WITH ADDENDUM NO. 1 AND NO. 2 AND THE STATE OF WISCONSIN, DEPARTMENT OF TRANSPORTATION (WI DOT) STANDARD SPECIFICATIONS FOR HIGHWAY AND STRUCTURE CONSTRUCTION, CURRENT EDITION SHALL GOVERN THIS PROJECT



NOTE:
 THE LOCATION OF EXISTING UNDERGROUND UTILITIES SHOWN ON PLANS ARE APPROXIMATE. THE CONTRACTOR SHALL DETERMINE THE EXACT LOCATION OF ALL EXISTING UTILITIES BEFORE COMMENCING WORK, AND AGREES TO BE FULLY RESPONSIBLE FOR ANY AND ALL DAMAGES WHICH MIGHT BE OCCASIONED BY THE CONTRACTOR'S FAILURE TO EXACTLY LOCATE AND PRESERVE ANY AND ALL UNDERGROUND UTILITIES.



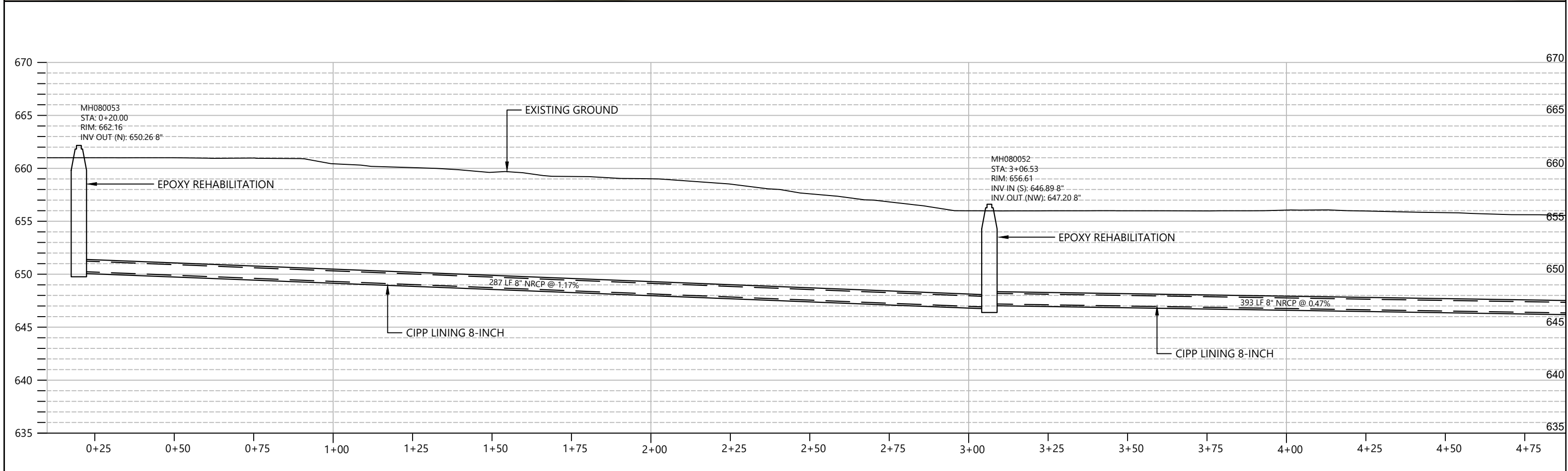
GENERAL NOTES:

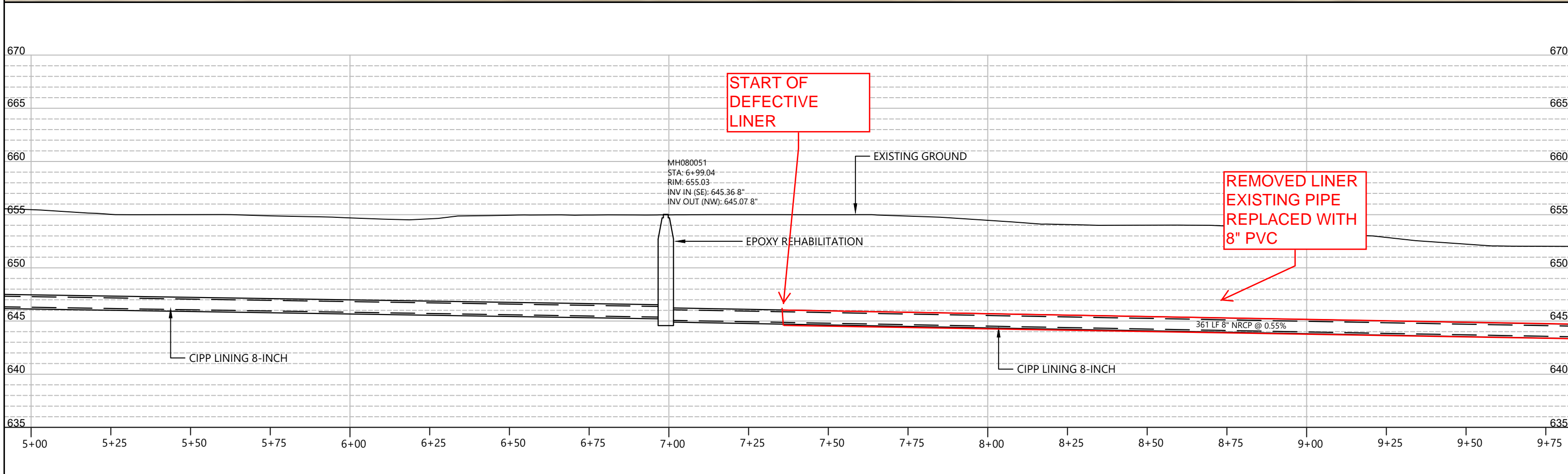
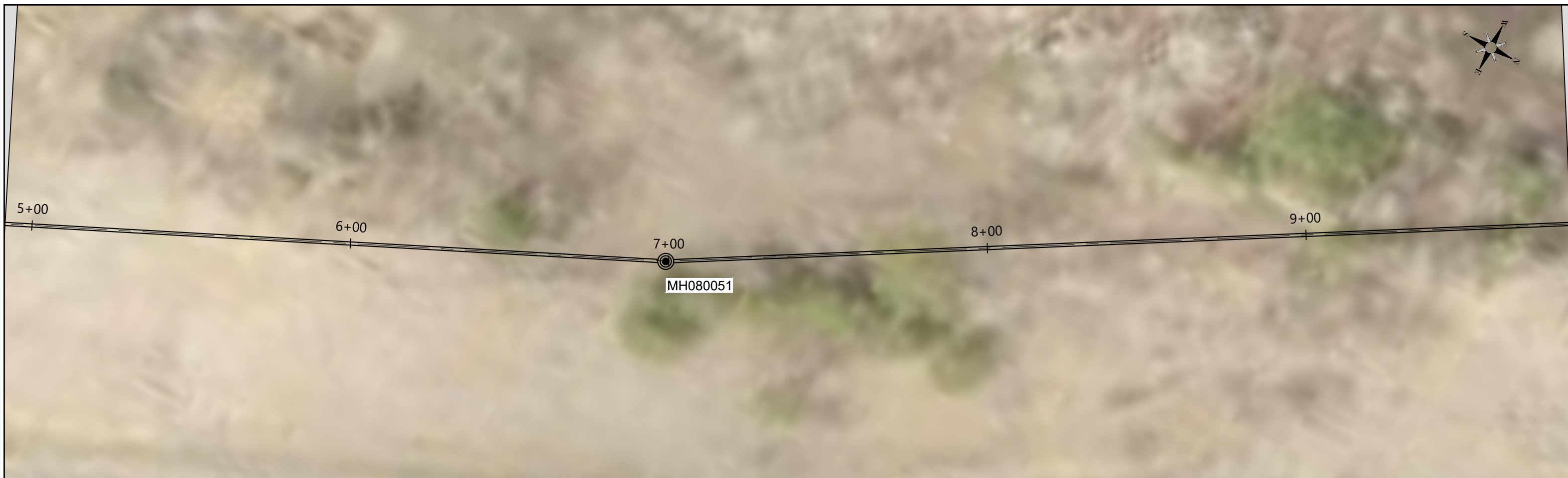
1. INSTALLATION AND MATERIALS FOR ALL SANITARY AND STORM SEWER PIPES AND STRUCTURES SHALL CONFORM TO THE REQUIREMENTS OF THE CITY OF SUPERIOR MINIMUM STANDARDS FOR GRAVITY SEWER CONSTRUCTION.
2. ALL AREAS OUTSIDE OF THE PROJECT LIMITS SHALL BE RESTORED TO PRE-CONSTRUCTION CONDITION AT NO ADDITIONAL COST TO THE CITY. THIS SHALL INCLUDE CONTRACTOR STAGING AREAS FOR EQUIPMENT AND MATERIALS.

	CITY OF SUPERIOR, WI - ENVIRONMENTAL SERVICES DIVISION OF PUBLIC WORKS	OVERVIEW	DRAWN: BG	PLOT: 9/16/2020	SHEET 2 OF 13
	ITASCA EAST 2ND INTERCEPTOR HYDROGEN SULFIDE SANITARY SEWER REHABILITATION		APPROVED: EA		ADDENDUM: (N/A)

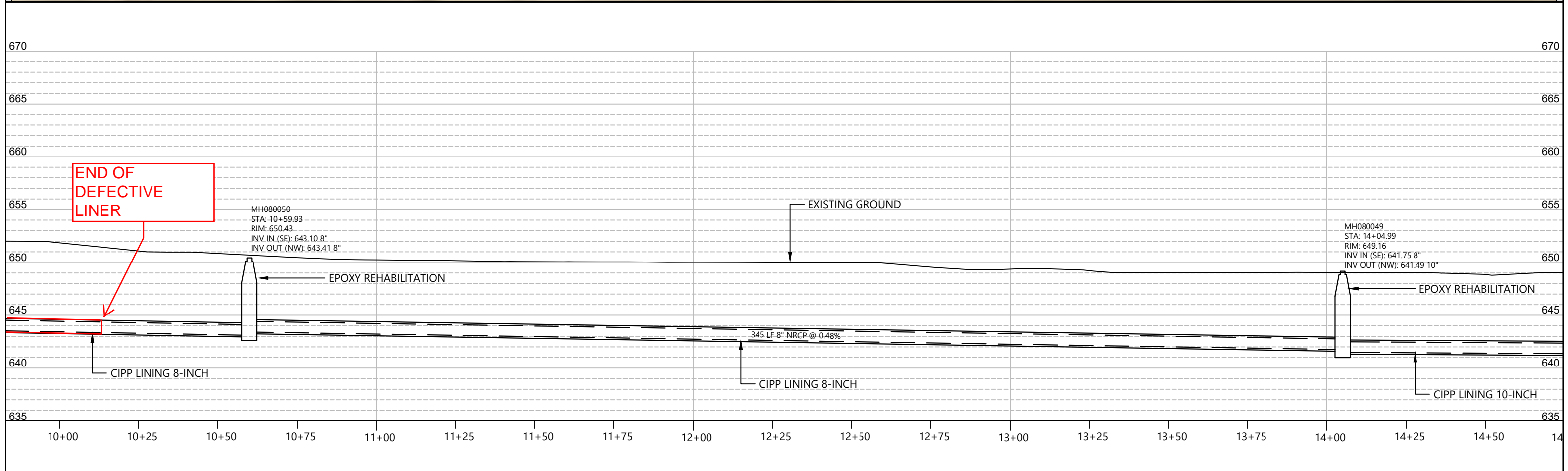
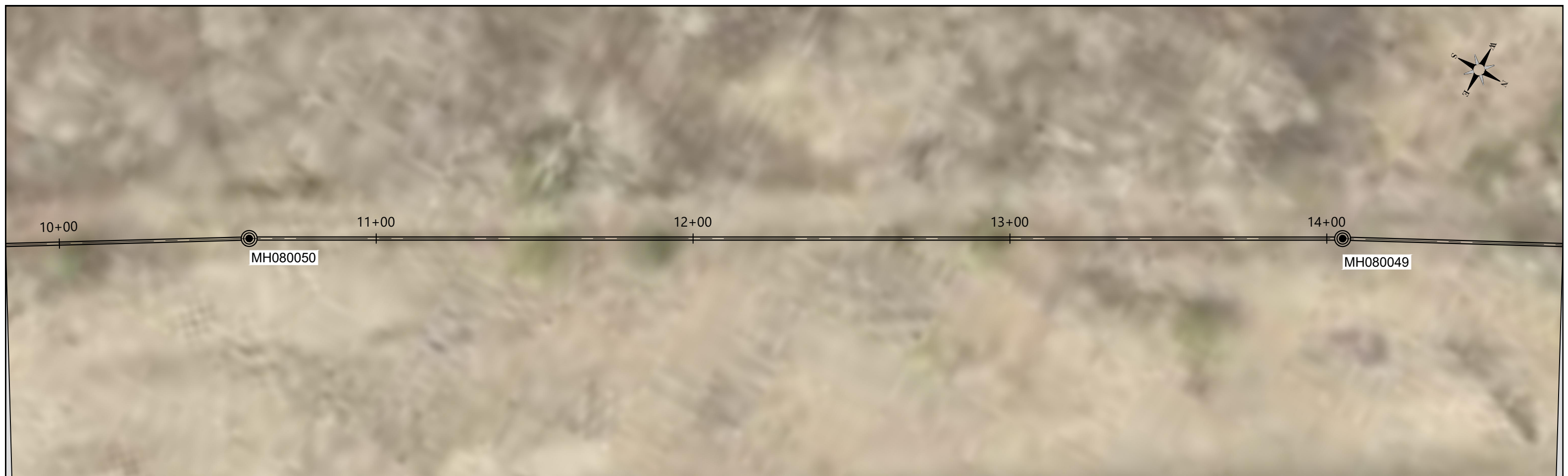
ITASCA EAST 2ND INTERCEPTOR HYDROGEN SULFIDE SANITARY SEWER REHABILITATION			
Item	Description	Unit	Quantity
619.1000	Mobilization	EA	1
643.0100	Traffic Control	EA	1
SPV.0060.01	Sanitary Structure Rehabilitation	EA	16
SPV.0090.01	Cured-In-Place Pipe Lining (CIPP) 8-Inch	LF	1,386
SPV.0090.02	Cured-In-Place Pipe Lining (CIPP) 10-Inch	LF	2,853
SPV.0105.01	Site Restoration	LS	1



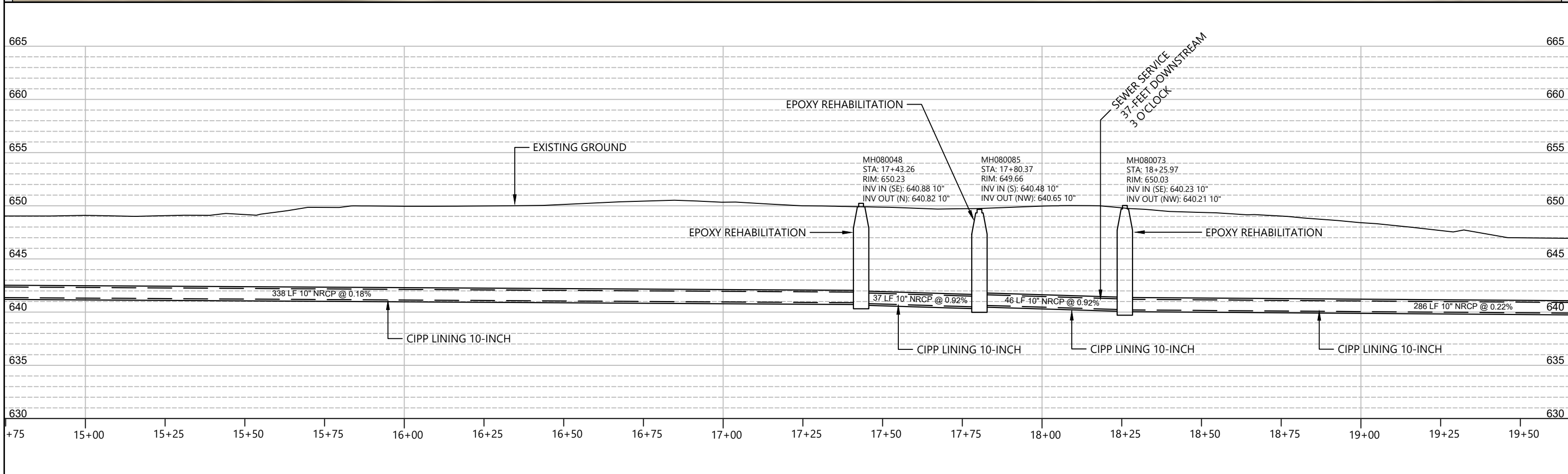
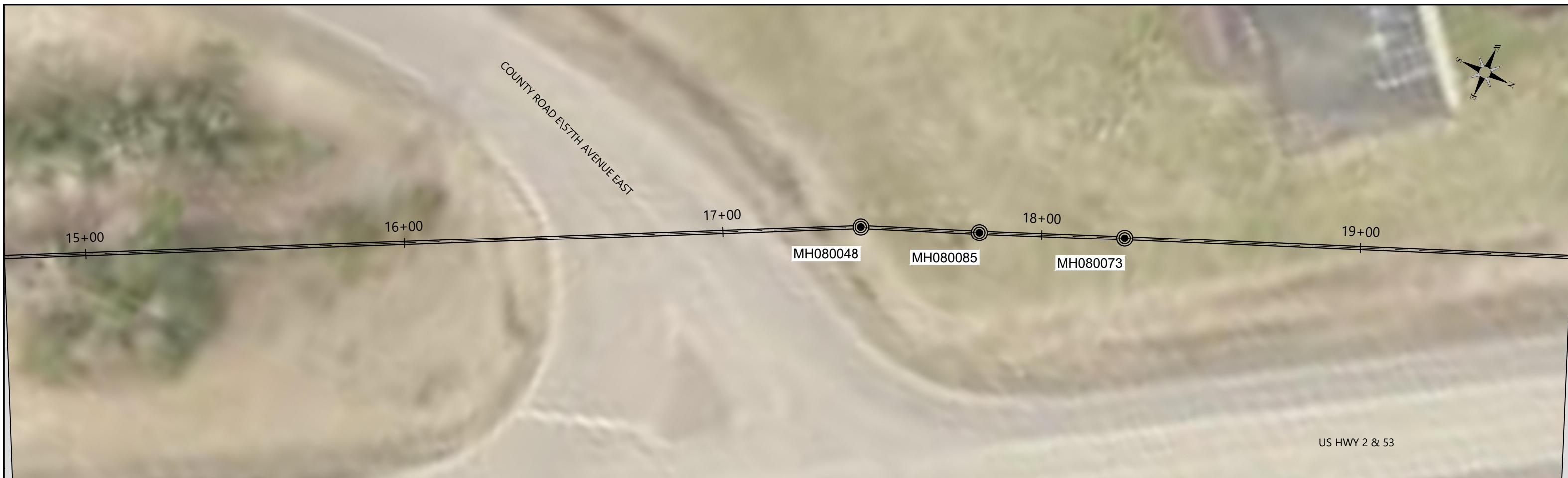




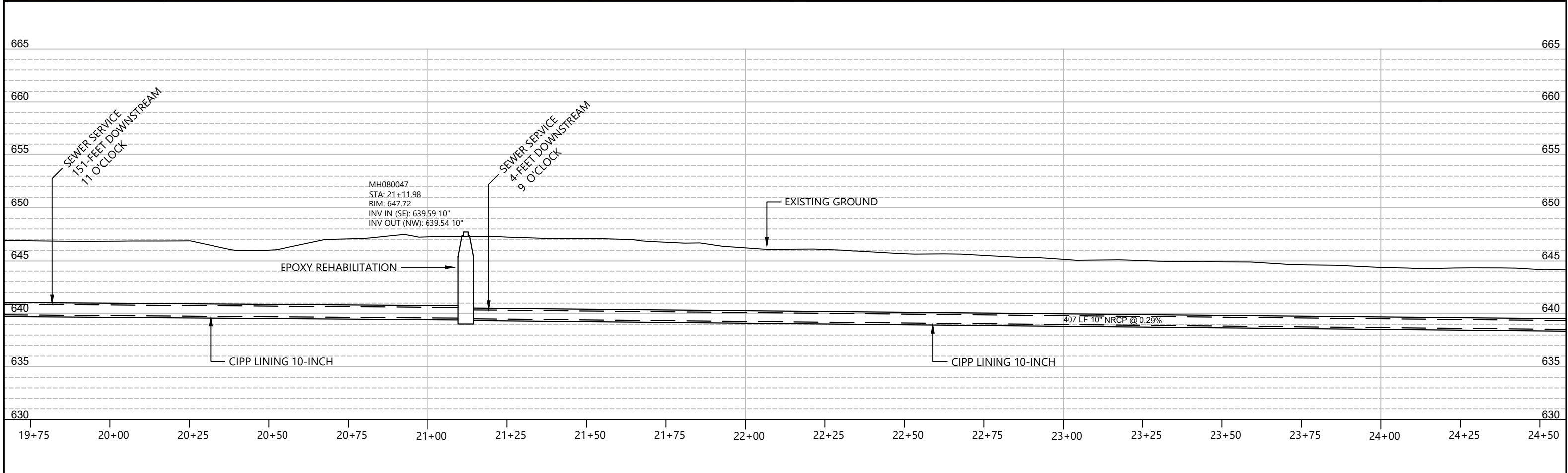
	CITY OF SUPERIOR, WI - ENVIRONMENTAL SERVICES DIVISION OF PUBLIC WORKS	HWY 2 PIPE PLAN & PROFILE 4+00 - 9+75	DRAWN: BG	PLOT: 9/16/2020	SHEET 5 OF 13
	ITASCA EAST 2ND INTERCEPTOR HYDROGEN SULFIDE SANITARY SEWER REHABILITATION		APPROVED: EA		ADDENDUM: (N/A)



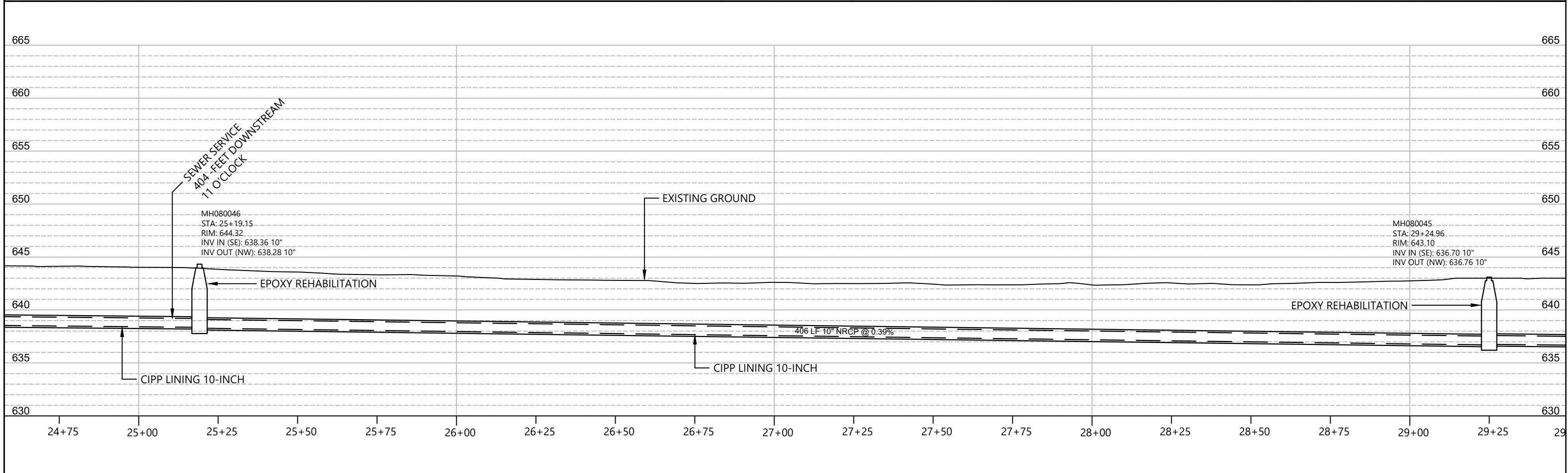
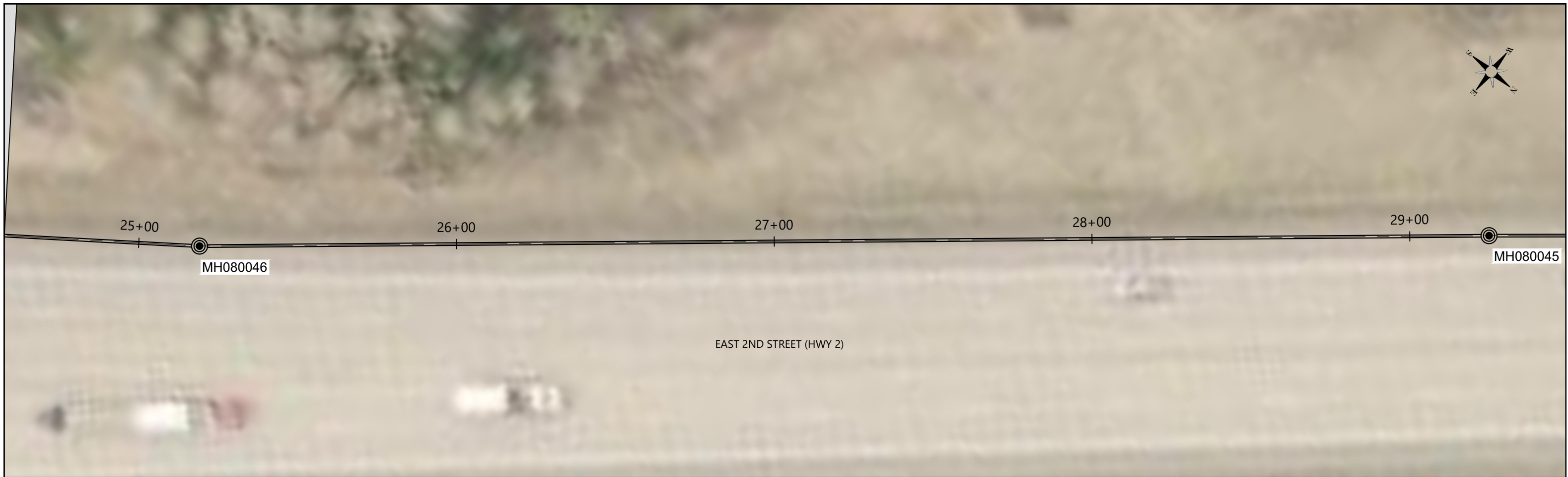
	CITY OF SUPERIOR, WI - ENVIRONMENTAL SERVICES DIVISION OF PUBLIC WORKS	HWY 2 PIPE PLAN & PROFILE 9+75 - 14+50	DRAWN: BG	PLOT: 9/16/2020	SHEET 6 OF 13
	ITASCA EAST 2ND INTERCEPTOR HYDROGEN SULFIDE SANITARY SEWER REHABILITATION		APPROVED: EA		ADDENDUM: (N/A)



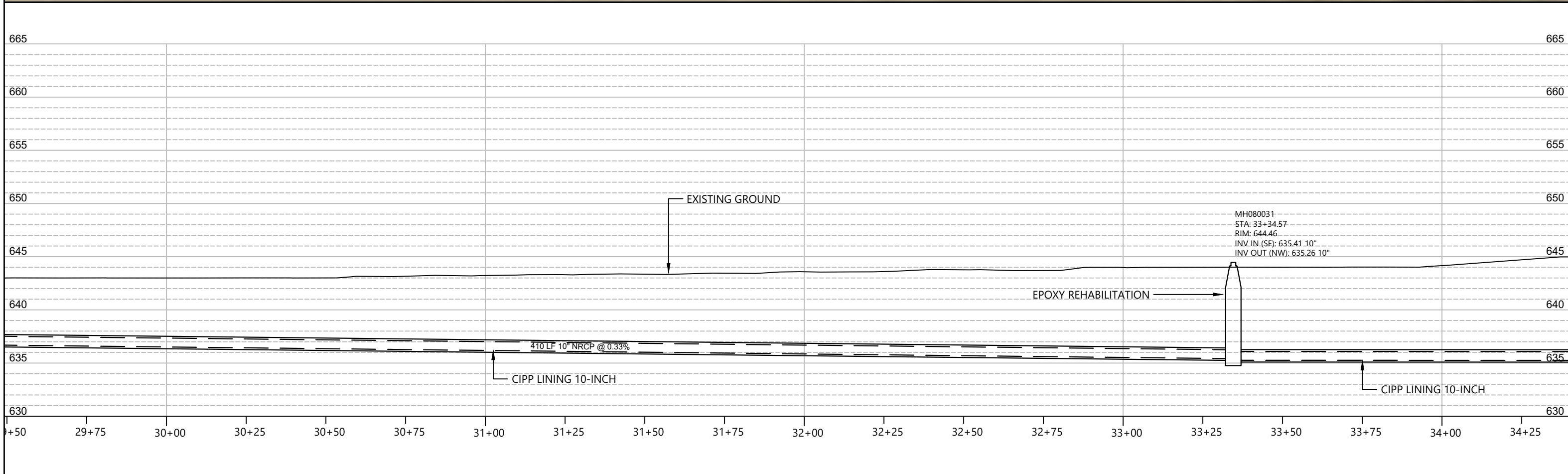
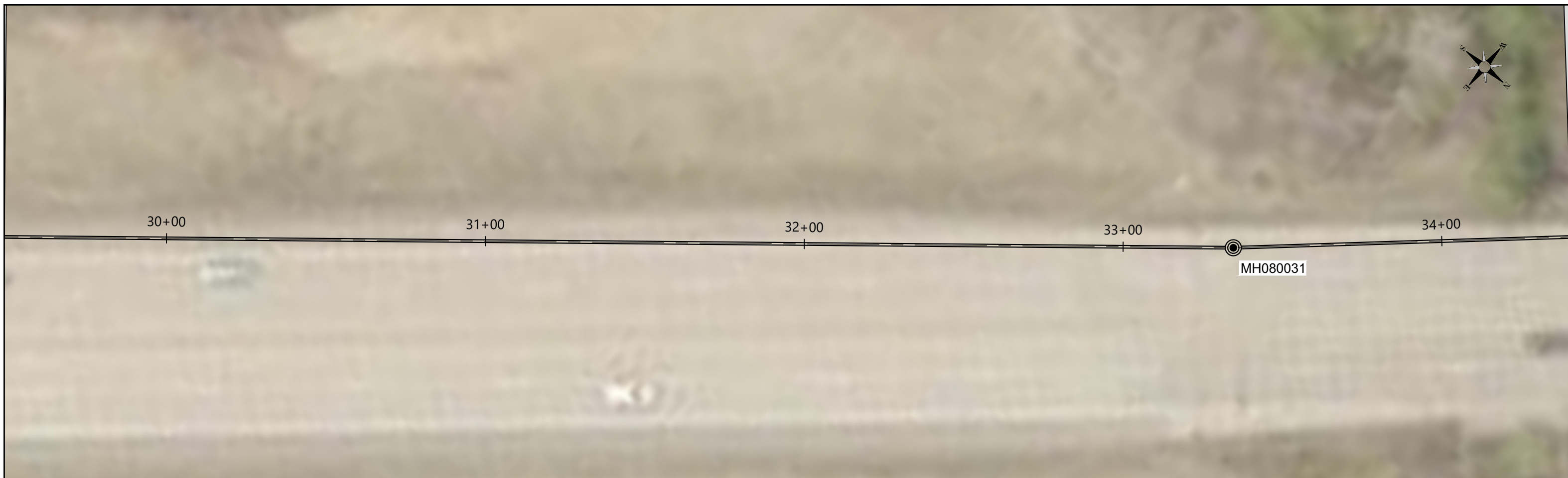
	CITY OF SUPERIOR, WI - ENVIRONMENTAL SERVICES DIVISION OF PUBLIC WORKS	HWY 2 PIPE PLAN & PROFILE 14+50 - 19+50	DRAWN: XX	PLOT: 9/16/2020	SHEET 7 OF 13
	ITASCA EAST 2ND INTERCEPTOR HYDROGEN SULFIDE SANITARY SEWER REHABILITATION		APPROVED: YY		ADDENDUM: (N/A)



	CITY OF SUPERIOR, WI - ENVIRONMENTAL SERVICES DIVISION OF PUBLIC WORKS	HWY 2 PIPE PLAN & PROFILE 19+50 - 24+50	DRAWN: BG	PLOT: 9/16/2020	SHEET 8 OF 13
	ITASCA EAST 2ND INTERCEPTOR HYDROGEN SULFIDE SANITARY SEWER REHABILITATION		APPROVED: EA		ADDENDUM: (N/A)



	CITY OF SUPERIOR, WI - ENVIRONMENTAL SERVICES DIVISION OF PUBLIC WORKS	HWY 2 PIPE PLAN & PROFILE 24+50 - 29+25	DRAWN: BG	PLOT: 9/16/2020	SHEET 9 OF 13
	ITASCA EAST 2ND INTERCEPTOR HYDROGEN SULFIDE SANITARY SEWER REHABILITATION		APPROVED: EA		ADDENDUM: (N/A)



	CITY OF SUPERIOR, WI - ENVIRONMENTAL SERVICES DIVISION OF PUBLIC WORKS	HWY 2 PIPE PLAN & PROFILE 29+25 - 34+25	DRAWN: BG	PLOT: 9/16/2020	SHEET 10 OF 13
	ITASCA EAST 2ND INTERCEPTOR HYDROGEN SULFIDE SANITARY SEWER REHABILITATION		APPROVED: EA		ADDENDUM: (N/A)

