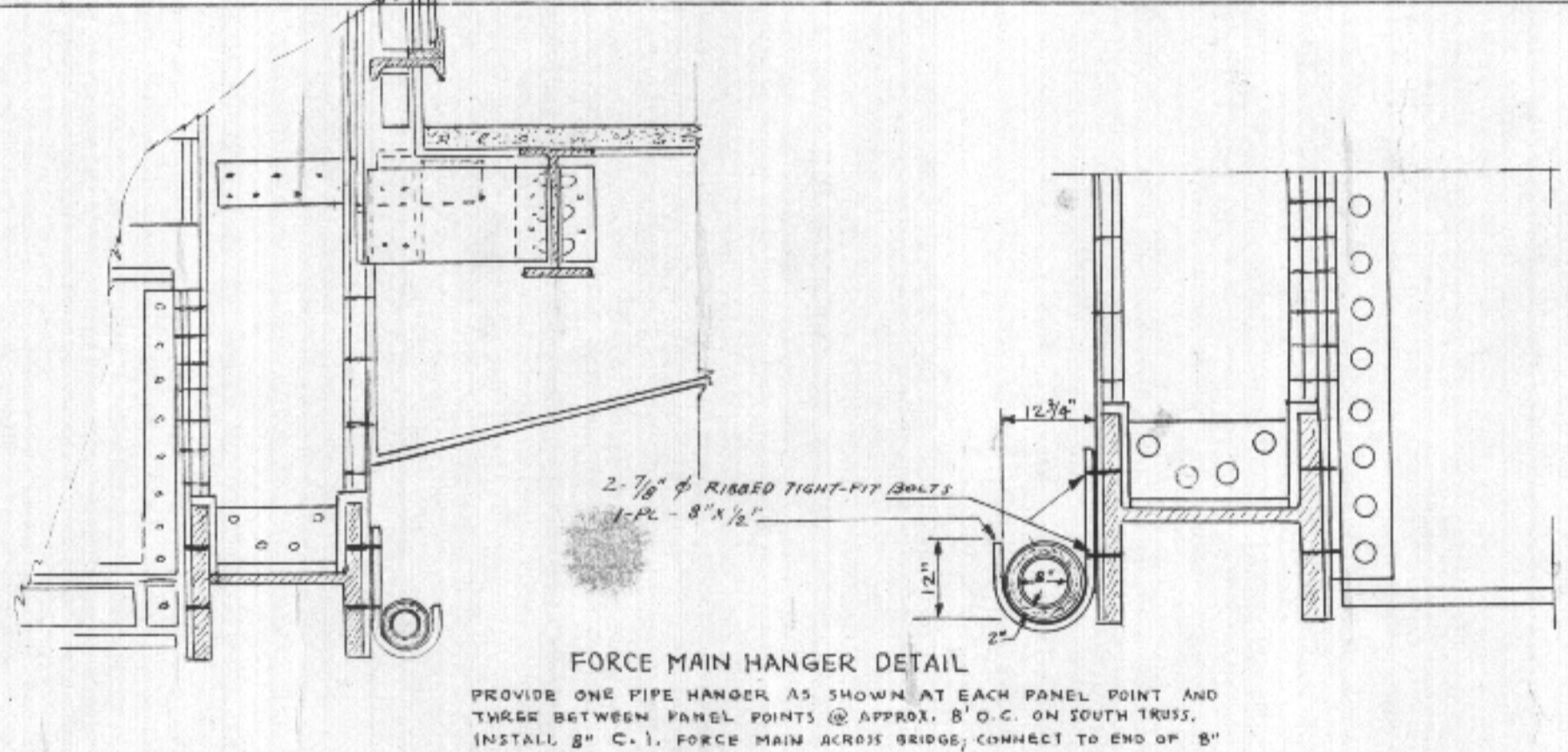
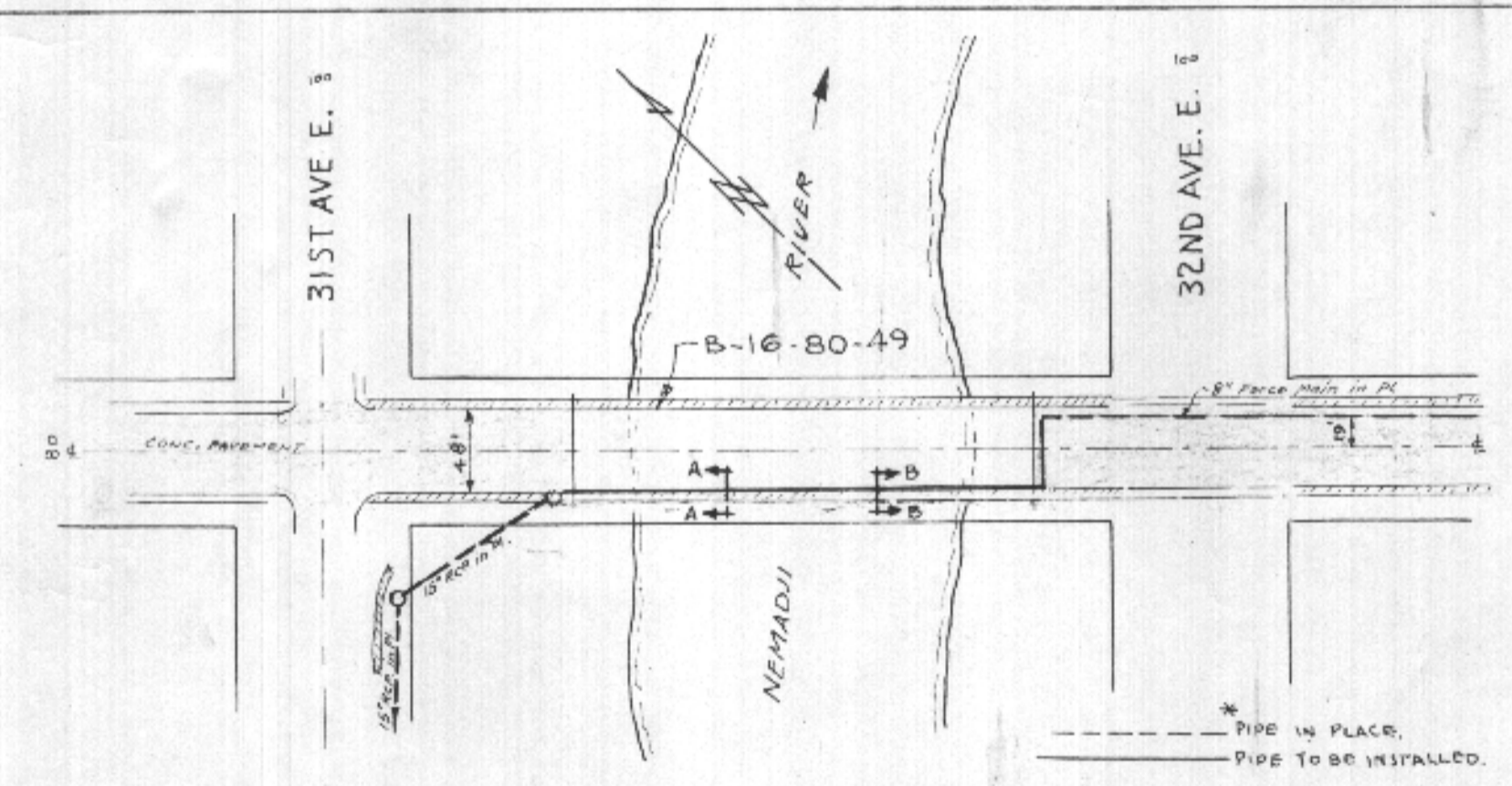
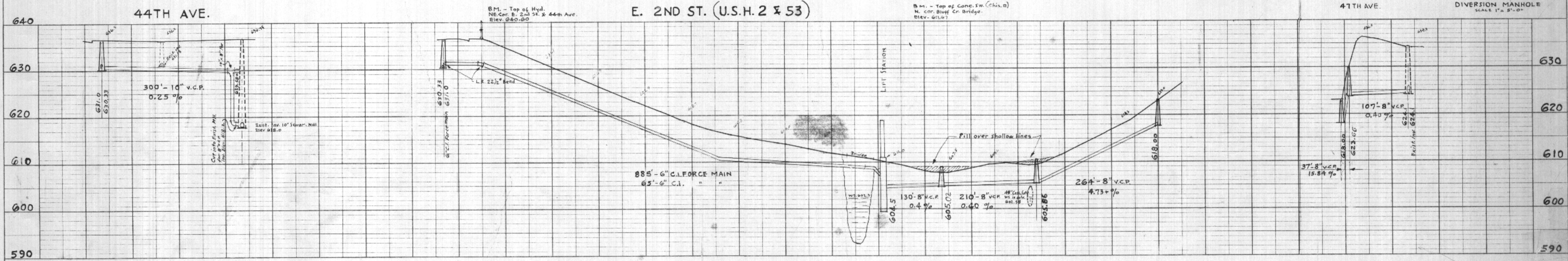
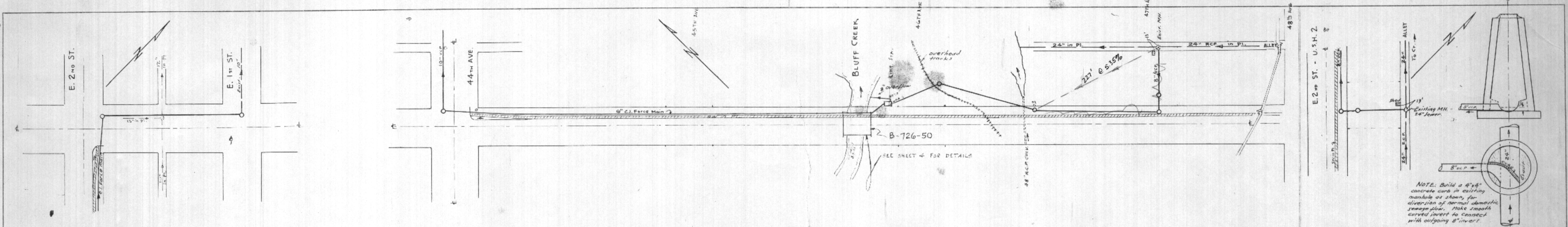


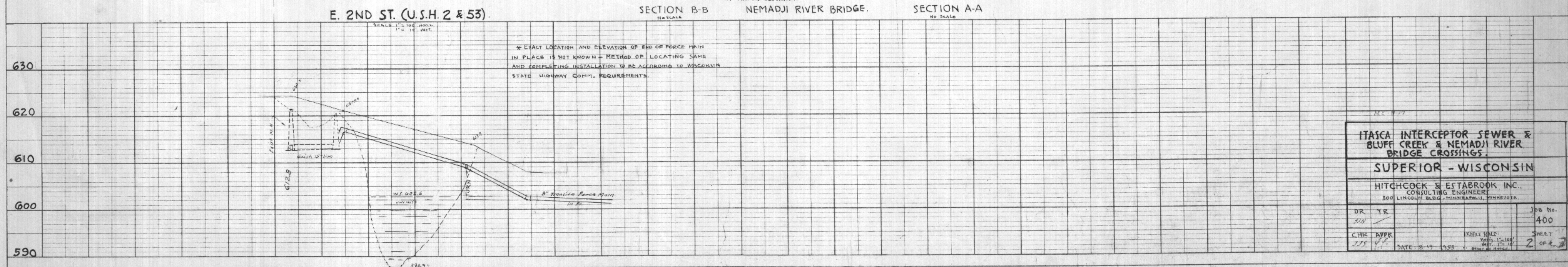
DATE: 7/10/53
 BY: J.H. J...
 CHECKED: J.H. J...
 NO. 1753

DATE: 7/10/53
 BY: J.H. J...
 CHECKED: J.H. J...
 NO. 1753



DEPARTMENT OF HEALTH, EDUCATION AND WELFARE
 DIVISION OF PUBLIC HEALTH
 This plan and specifications in connection with the above project have been reviewed and approved by the State Engineer and are hereby authorized.
 Regional Engineer
 Region V, Chicago, Illinois

EXAMINED and reported upon by the Section on Environmental Sanitation
 O. J. MUEGGE
 State Sanitary Engineer
 APPROVED by the State Board of Health, as required by Wisconsin Statutes, subject to conditions set forth in the letter of approval
 JUL 6 1956
 CARL N. NEUFERT, M. D.
 State Health Officer
 Verification: [Signature]



ITASCA INTERCEPTOR SEWER & BLUFF CREEK & NEMADJI RIVER BRIDGE CROSSINGS
 SUPERIOR - WISCONSIN
 HITCHCOCK & ESTABROOK INC.
 CONSULTING ENGINEERS
 300 LINCOLN BLDG - MINNEAPOLIS, MINNESOTA

DR	YR	JOB NO.
J.H.	1953	400
CHEK	APPR	SHEET
J.H.	7/10/53	2 of 2

DATE: 7-19-1953