

PREM, INC.
 CONSULTING ENGINEERS
 1000 W. 10th St., Suite 100
 Oklahoma City, Oklahoma 73106
 Phone: (405) 233-1100
 Fax: (405) 233-1101
 Website: www.prem.com

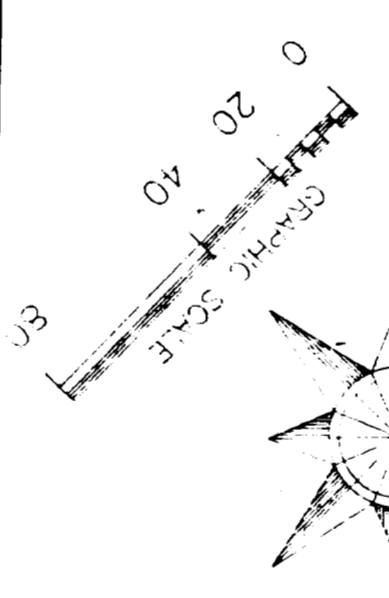
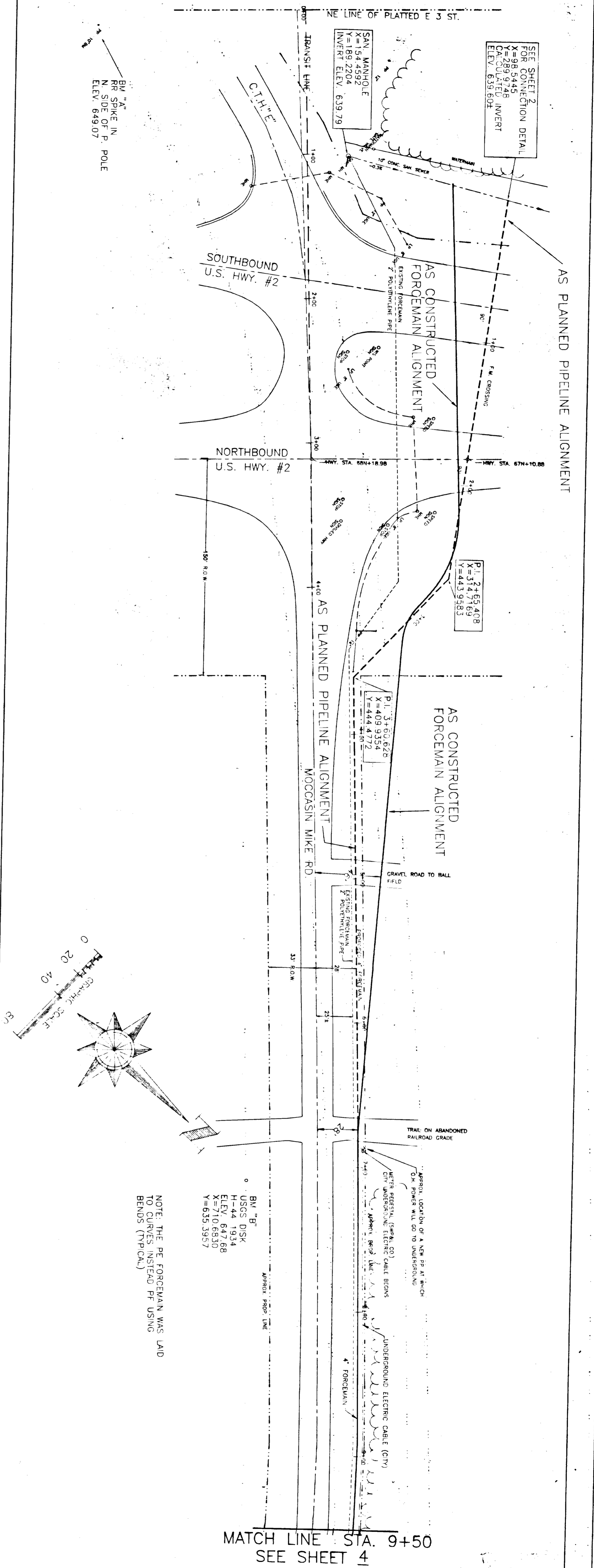
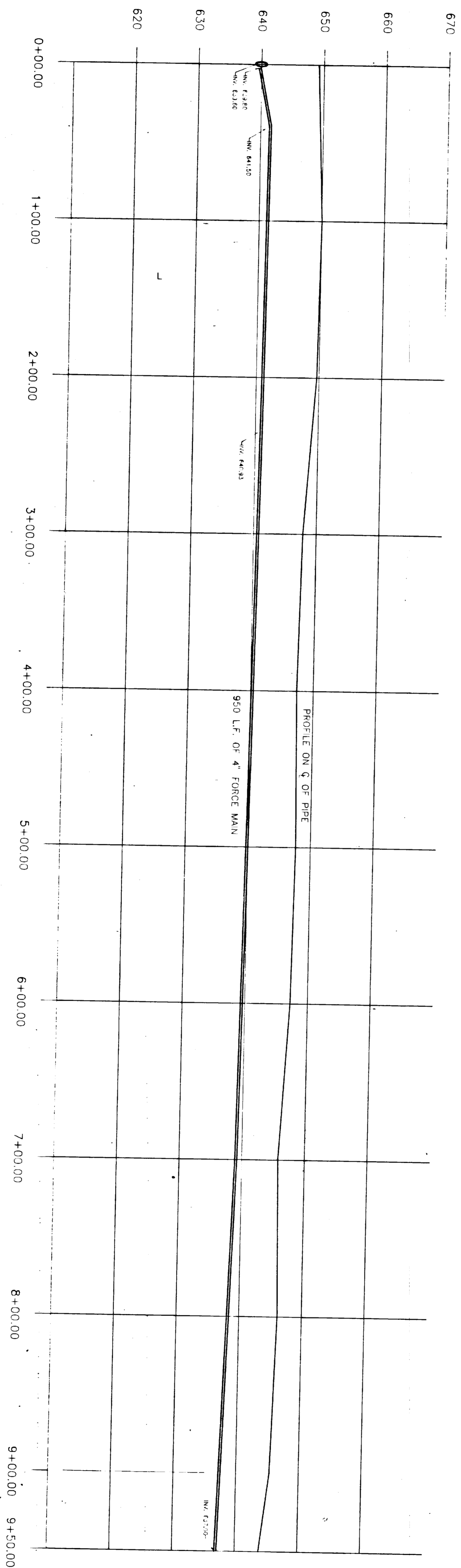
Checked by: WUG
 Drawn by: B.F.P.

NO. 1
 DATE: 11/11/03

AS CONSTRUCTED
 FORCEMAIN ALIGNMENT

DATE: 11/11/03

Profile



NOTE: THE PE FORCEMAN WAS LAID TO CURVES INSTEAD OF USING BENDS (TYPICAL)

MATCH LINE STA. 9+50
 SEE SHEET 4

RECORD DRAWING