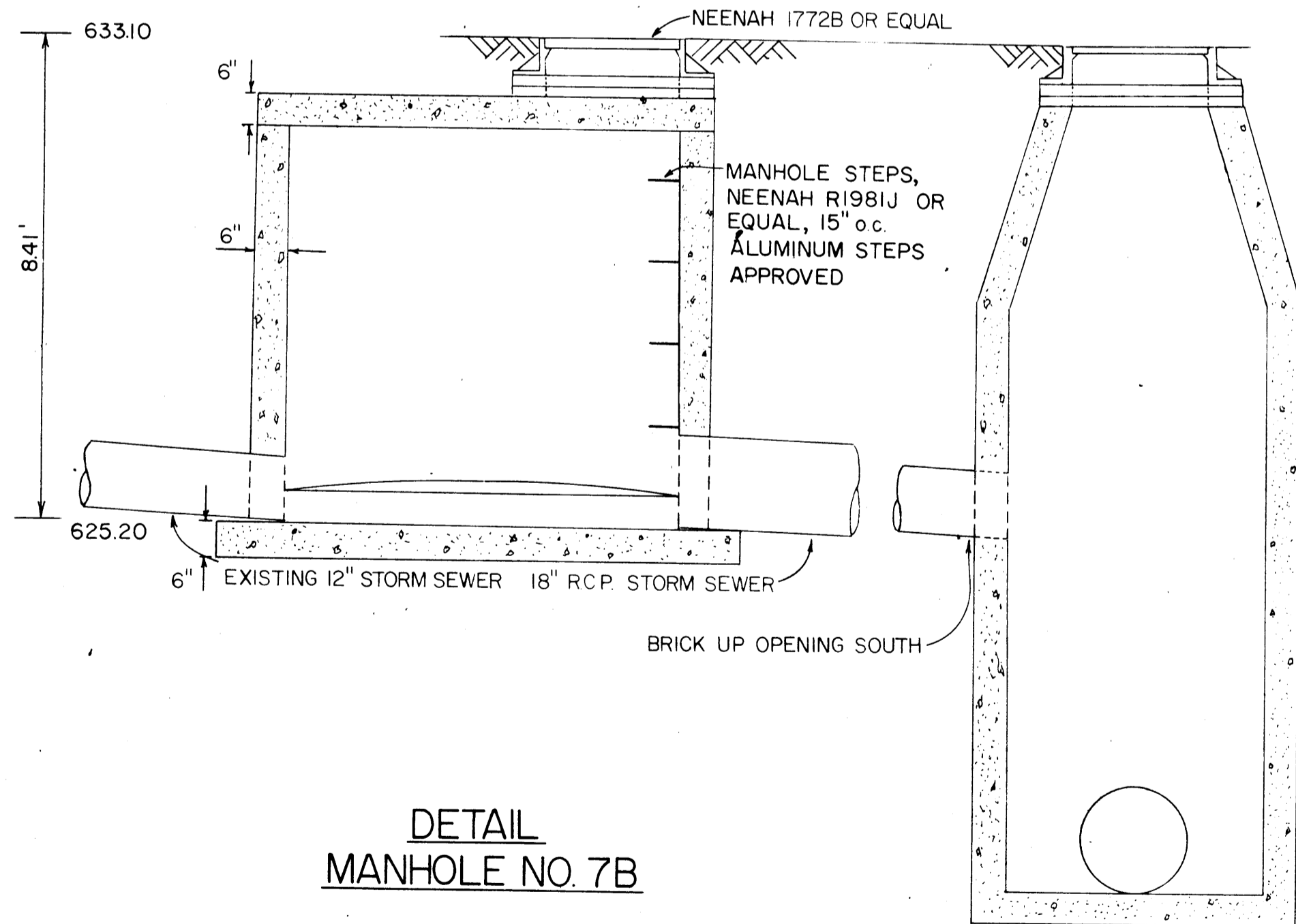
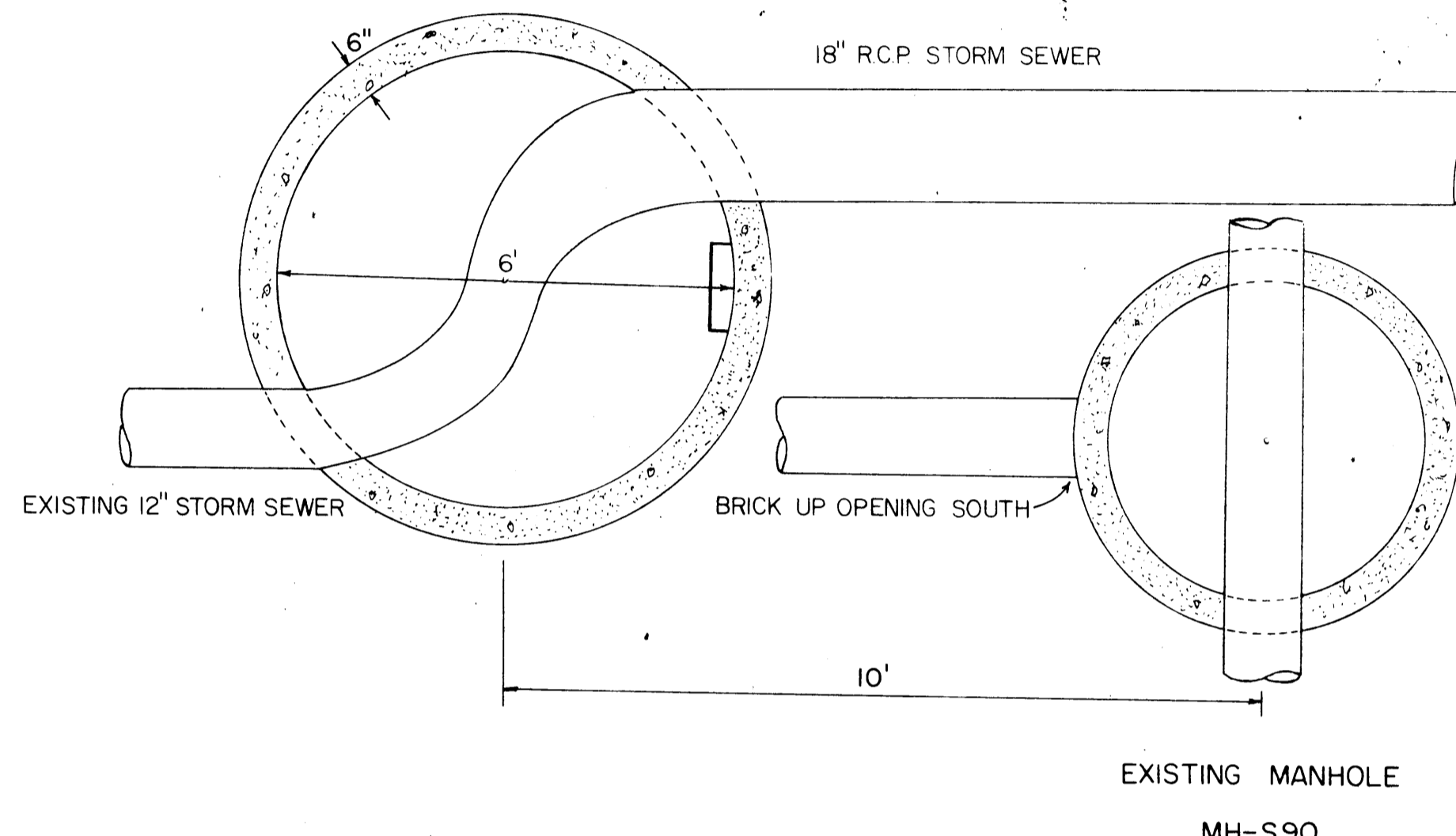
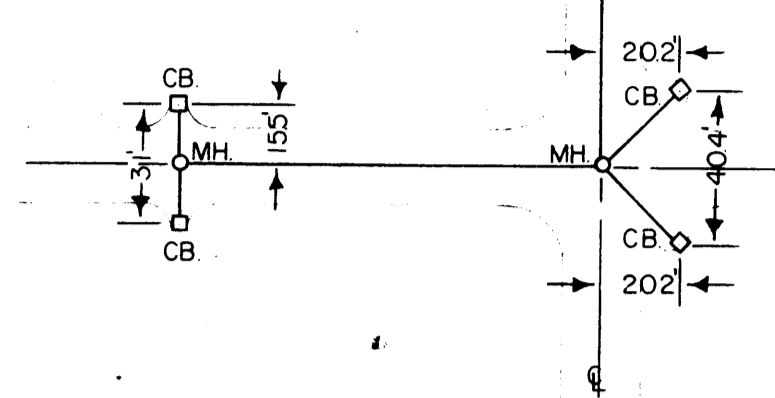


### STANDARD CATCHBASIN LOCATION

(FOR CATCHBASINS NOT DIMENSIONED)

SCALE: 1"=50'



DETAIL  
MANHOLE NO. 7B

#### STORM SEWER - DISTRICT 8

Manhole or Catchbasin No.	Plate No.	*Casting No.	Depth
1	1-8	1642B	4.90
2	1-8	1642B	5.82
3	1-8	1642B	5.20
3A	1-14	3246B	3.84
3B	1-13	3246B	3.90
3C	1-14	3246B	3.86
3D	1-14	3246B	3.29
4	1-8	1642B	5.90
4A	1-14	3246B	3.92
4B	1-14	3246B	4.02
5	1-8	1642B	7.00
6	1-8	1642B	7.66
7	1-8	1642B	5.09
7A	1-14	3246B	4.17
7B*	1-S2	Existing	4.85
8	1-8	1642B	6.14
8A	1-13	3246B	3.40
8B	1-S2	Existing	3.12
9	Special	1642B	13.22
10	1-8	1642B	7.66
11	1-8	1642B	9.08
12	1-8	2573	6.62
12A	1-14	3246B	
		(Modified)	3.93
13	1-8	1642B	6.25
13A	1-14	1642B	5.62
14	1-13	2577	3.40
14A	1-13	3246B	3.14
15	1-13	3246B	3.40
15A	1-13	3246B	3.00
15B	1-S2	Existing	3.54
16	1-8	1642B	5.33
16A	1-14	3246B	2.75
16B	1-S2	Existing	3.58
17	1-8	1642B	6.18
17A	1-14	3246B	4.02
17B	1-14	3246B	6.08
18	1-8	1642B	4.58
18A	1-S2	Existing	5.34
18B	1-13	3246B	5.16
18C	1-13	3246B	6.21
19	1-8	1642B	6.84
20	1-8	1642B	7.15
21	1-8	1642B	7.46
21A	1-13	3246B	3.60
21B	1-S2	Existing	3.32
22	--	Existing	8.70
23	--	Existing	7.10
23A	1-13	3246B	2.91
23B	1-14	3246B	2.24
24	--	Existing	7.06
25	1-13	3246B	7.01
25A	1-14	3246B	6.84

#### STORM SEWER - DISTRICT 7

Manhole or Catchbasin No.	Plate No.	*Casting No.	Depth
1	1-8	1642B	12.42
1A	1-14	3246B	5.41
2	1-8	1642B	10.68
2A	1-13	3246B	4.28
2B	1-14	3246B	2.74
3	1-8	1642B	8.70
4	1-8	1642B	9.76
4A	1-8	1642B	7.30
4B	1-13	3246B	4.14
4C	1-13	3246B	3.94
5	1-8	1642B	6.91
5A	1-13	3246B	5.26
5B	1-13	3246B	4.42
5C	1-14	3246B	4.06
5D	1-13	3246B	4.62
5E	1-14	3246B	4.90
6	1-13	3246B	4.32
6A	1-14	3246B	3.91
7	1-13	3246B	7.82
7A	1-14	3246B	3.84
7B	Special	1642B	8.41
7C	Existing	Existing	Existing
7D	Existing	Existing	Existing
7E	Existing	Existing	Existing
8	1-8	1642B	7.12
9	1-8	1642B	10.30
9A	1-13	3246B	4.77
9B	1-14	3246B	4.35
9C	1-8	1642B	10.20
10	1-8	1642B	9.77
10A	1-14	3246B	3.65
10B	1-13	3246B	4.32
10C	1-14	3246B	3.86
10D	1-14	3246B	3.88
11	1-8	1642B	9.76
11A	1-13	3246B	7.62
12	1-8	1642B	8.04
12A	1-S2	Existing	Existing
13A	1-S2	Existing	Existing
13B	1-S2	Existing	Existing
13C	--	Existing	Existing
13D	--	Existing	Existing
14	1-8	1642B	7.35
14A	1-S2	Existing	Existing
14B	1-S2	Existing	Existing
15	1-8	1642B	8.58
15A	1-14	3246B	4.21
15B	1-14	3246B	4.54
16	1-13	3246B	3.50
16A	1-14	3246B	4.37
17	1-13	3246B	4.37
17A	1-14	3246B	3.79

#### STORM SEWER - DISTRICT 7 (Cont'd.)

Manhole or Catchbasin No.	Plate No.	Casting No.	Depth
18	--	Existing	Existing
19	--	Existing	Existing
20	--	Existing	Existing
21	1-8	1642B	8.41
21A	1-13	3246B	4.89
21B	1-14	3246B	3.98
22	--	Existing	Lower 0.94
23	--	Existing	Lower 0.10
23A	--	Existing	Existing
23B	--	Existing	Existing
23C	--	Existing	Existing
24	1-S2	Existing	Existing
24A	1-S2	Existing	Existing
24B	1-S2	Existing	Existing
25	1-8	1642B	7.76
26	1-8	1642B	8.68
27	1-13	3246B	4.96
27A	1-13	3246B	4.20
27B	1-S2	Existing	--
28	1-13	2573	6.16
28A	1-14	3246B	3.77
29	1-13	3246B	8.38
30	1-13	3246B	8.60
30A	1-14	3246B	2.64
31	1-8	1642B	9.39
31A	1-8	1642B	9.42
31B	1-8	1642B	4.55
32	1-8	1642B	9.80
32A	1-13	3246B	9.25
32B	1-8	1642B	4.34
32C	1-S2	Existing	Existing
32D	1-S2	Existing	Existing
32E	1-S2	Existing	Existing
32F	1-S2	Existing	Existing
33	1-8	1642B	9.35
33A	1-13	3246B	4.31
33B	1-14	3246B	3.83
35	1-8	1642B	7.11
35A	1-13	3246B	4.51
35B	1-14	3246B	4.17
36	1-8	1642B	4.99
36A	1-S2	Existing	Existing
36B	1-S2	Existing	Existing
37	1-13	3246B	2.50
37A	1-14	3246B	2.23
37B	1-8	1642B	3.75
37C	1-13	3246B	3.53
38	1-13	3246B	3.67
38A	1-14	3246B	3.17
39	1-8	1642B	8.39
39A	1-14	3246B	4.56
39B	1-14	3246B	4.97
40	1-13	3246B	5.22
41	1-13	3246B	4.50
41A	1-14	3246B	3.97
41B	1-14	3246B	2.72
42	1-13	3246B	4.16
42A	1-14	3246B	3.91
43	1-13	3246B	5.31
43A	1-14	3246B	4.78
44	1-8	1642B	6.37
45	1-13	3246B	4.45
45A	1-14	3246B	4.15
46	1-13	3246B	5.20
46A	1-14	3246B	4.99
47	1-14	3246B	8.67
47A	1-13	3246B	3.36
47B	1-14	3246B	2.86
48	1-8	1642B	10.04
49	1-8	1642B	9.46
49A	1-8	1772B	8.98
49B	1-13	3246B	3.80
49C	1-14	3246B	3.54
50	1-8	1642B	3.88
51	1-8	1642B	9.22
52	1-8	2573	7.22
53	1-8	1642B	7.51
53A	1-14	3246B	4.53
54	1-8	1642B	7.86
55	1-8	1642B	5.38
55A	1-14	3246B	3.98
55B	1-14	3246B	4.12
55C	1-S2	Existing	Existing
56	1-8	1642B	5.42
56A	1-14	3246B	4.34
56B	1-14	3246B	4.55
56C	1-S2	Existing	Existing
57	1-8	1642B	5.06
57A	1-14	3246B	3.98
57B	1-14	3246B	3.96
58	1-13	3246B	4.68
58A	1-14	3246B	4.07
59	1-13	3246B	4.24
59A	1-14	3246B	3.52
59B	1-8	1642B	5.10
60	1-13	3246B	2.98
60A	1-14	3246B	2.75
61	1-13	3246B	6.58
62	1-13	3246B	7.18
62A	1-14	3246B	5.71
63	1-13	3246B	5.59
63A	1-14	3246B	3.93
64	1-13	3246B	5.00
64A	1-14	3246B	3.71
65	1-13	3246B	5.25
65A	1-S2	Existing	Existing
65B	1-13	3246B	4.11
65C	1-S2	Existing	Existing
66	1-14	3246B	3.06

Manhole or Catchbasin No.	Plate No.	Casting No.	Depth
67	1-8	1642B	6.31
68	1-13	3246B	5.80
68A	1-14	3246B	3.92
69	1-13	3246B	4.88
70	1-8	1642B	3.36
71	1-8	1642B	8.44
71A	1-14	3246B	7.45
71B	1-14	3246B	4.56
71C	1-S2	Existing	Existing
71E	--	Existing	Existing
71F	--	Existing	Existing
73	1-13	3246B	3.71
73A	1-13	3246B	3.06
73C	1-14	3246B	3.05
73B	1-14	3246B	2.56
74	1-8	1642B	5.62
74A	--	Existing	Existing
74B	--	Existing	Existing
75	1-8	1642B	4.87
75A	1-8	1642B	5.56
76	1-13	3246B	3.90
76A	1-14	3246B	3.47
76B	1-14	3246B	4.37
77	1-13	3246B	3.59
77A	1-14	3246B	2.99
77B	1-8	1642B	5.85
78	1-13	3246B	4.02
78A	1-14	3246B	4.02
79	1-13	3246B	3.83
79A	1-S2	Existing	--
79B	1-13	3246B	2.87
79C	0+00	Existing	--
80	1-8	1642B	3.05
80A	1-14	3246B	4.13

\* Neenah Casting Numbers listed are for reference only.

#### STREET RESTORATION - DISTRICT 8

Sheet	Street	From	To	Length	Width	Section
6	E. 1st St.	50th Ave. E. 0+10	54th Ave. E. 17+10	1700	20	Residential Type I
7	53rd Ave. E.	E. 1st St. -1+00	E. 2nd St. 3+00	400	20	Residential Type I
7	53rd Ave. E.	53rd Ave. E. 0+12	E. 2nd St. 3+00	300	20	Residential Type I
7	53rd Ave. E.	E. 3rd St. 0+12	E. 4th St. 3+00	324	20	Residential Type I
7	52nd Ave. E.	E. 2nd St. 0+12	E. 3rd St. 3+00	288	20	Residential Type I
8	52nd Ave. E.	E. 3rd St. 0+12	E. 4th St. 2+62	250	20	Residential Type I
8	51st Ave. E.	E. 1st St. -1+00	E. 2nd St. 3+00	400	Variable	Residential Type I
8	51st Ave. E.	E. 1st St. 0-45	E. 2nd St. 3+00	300	20	Residential Type I

#### STREET RESTORATION - DISTRICT 7

Sheet	Street	From	To	Length	Width	Section
8	48th Ave.	2nd St. 4+70	1st 6+40	130	20	Residential Type I
9	E. 1st St.	35th Ave. E. 1+25	38th Ave. E. 16+38	1513	20	Residential Type I
9	38th Ave. E.	E. 1st St. -0+50	E. 2nd St. 3+00	350	20	Residential Type I
9	37th Ave. E.	E. 1st St. 0+00	E. 2nd St. 3+00	300	20	Residential Type I
9	37th Ave. E.	E. 1st St. 0+00	Itasca 2+00	200	20	Residential Type I
10	E. 3rd St.	36th Ave. E. 0+60	39th Ave. E. 16+40	1540	20	Residential Type I
10	37th Ave. E.	E. 3rd St. 0+40	E. 2nd St. 3+00	300	20	Residential Type I
10	37th Ave. E.	E. 3rd St. 0+00	E. 4th St. 3+00	300	20	Residential Type I
10	38th Ave. E.	E. 3rd St. 0+00	E. 2nd St. 2+50	250	20	Residential Type I
10	38th Ave. E.	E. 3rd St. 0+00	E. 4th St. 3+00	300	20	Residential Type I