

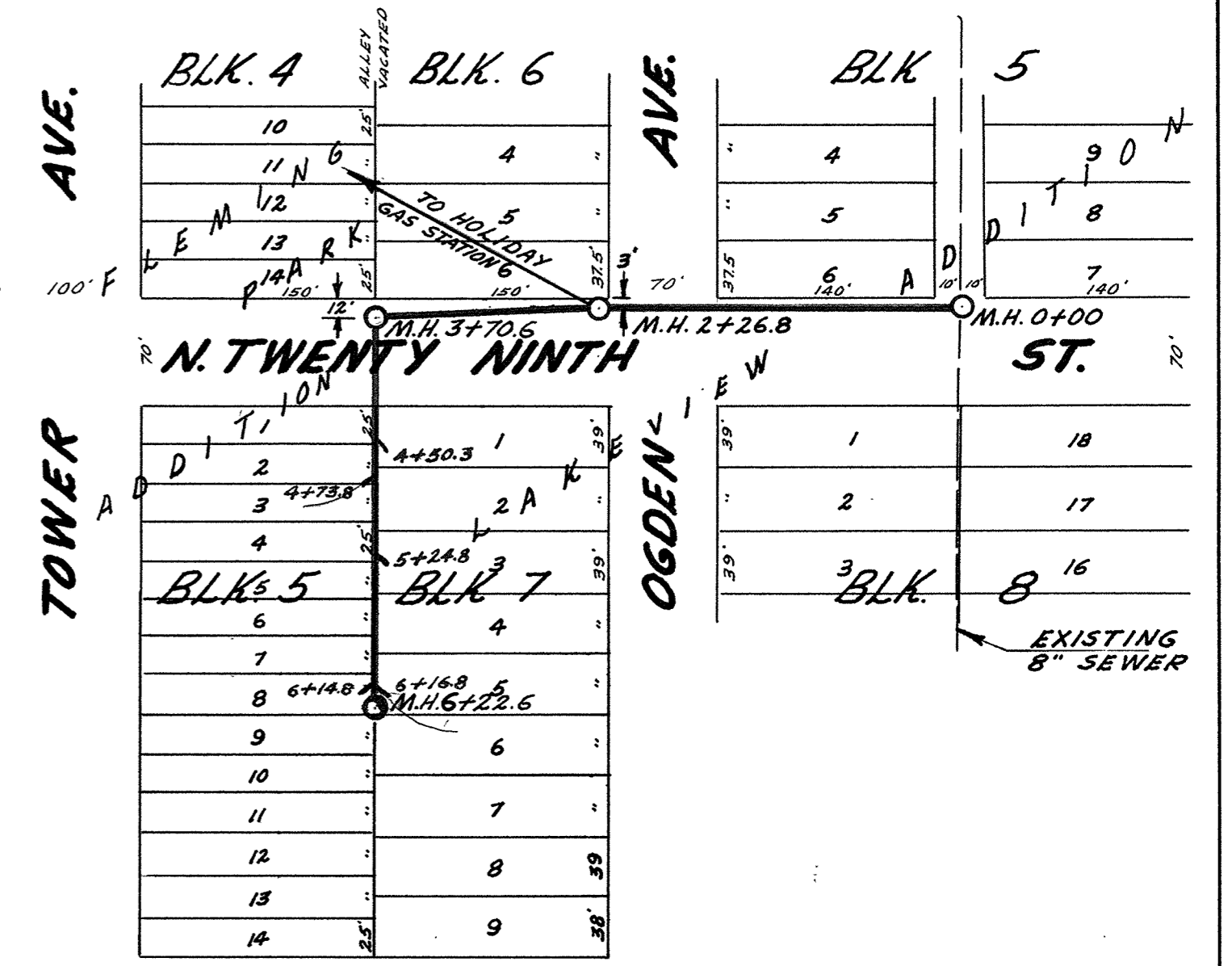
STA. 3+21.5 - STA. 9+50
 JOB COMPLETED NOV. 1967
 SIG STAE - CONTRACTOR
 ALL JOINTS NEOPREME
 SNAP JOINT.

STA. 0+00 - STA. 3+21.5
 JOB COMPLETED JULY 1966
 D.L. JOHNSON - CONTRACTOR
 ALL JOINTS NEOPREME SNAP
 JOINT.

NOTE: CONNECTION AT STA. 1+23
 CROSSES THROUGH STORM
 SEWER APPROX. 1' FROM TOP

CITY OF SUPERIOR
SANITARY SEWER DIST. #9

JOB STARTED OCTOBER 1959
 JOB COMPLETED OCTOBER 1959
 HORIZONTAL SCALE 1" = 100'
 VERTICAL SCALE 1" = 5'
 CONTRACTOR - WAGNER, EWALD, CORRIN
 CITY ENGINEER E.W. BERG
 NOTE: ALL JOINTS "COLD PLASTIC SEWER
 JOINT CEMENT" (SEWERTITE)
 STA. 0A+00 - 3A+93



N. THIRTIETH ST. (VAC.)

NOTE: STA. 0+00 - 2+26.8
 JOB COMPLETED 1970
 COMPLETED PRIVATELY BY HOLIDAY STATION CONTRACTOR
 STA. 2+26.8 - 6+22.6
 JOB COMPLETED DEC. 1972
 D.L. JOHNSON & GRIMSRUD PLUMBING CONTRACTORS

