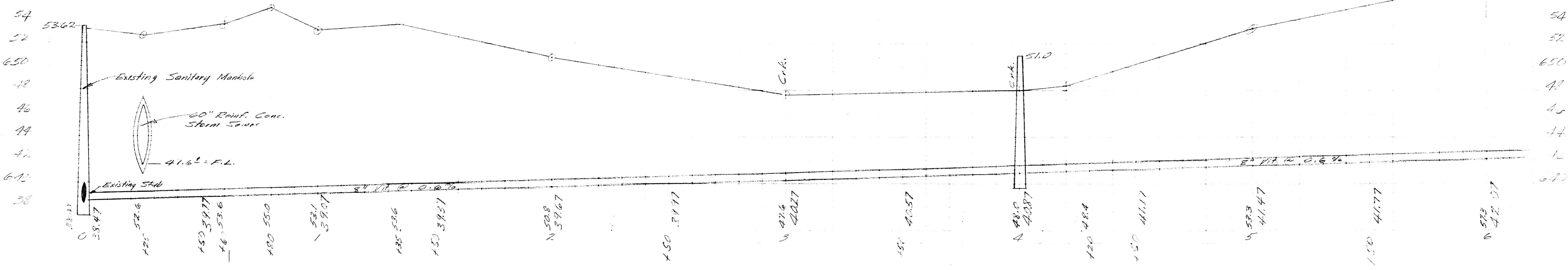
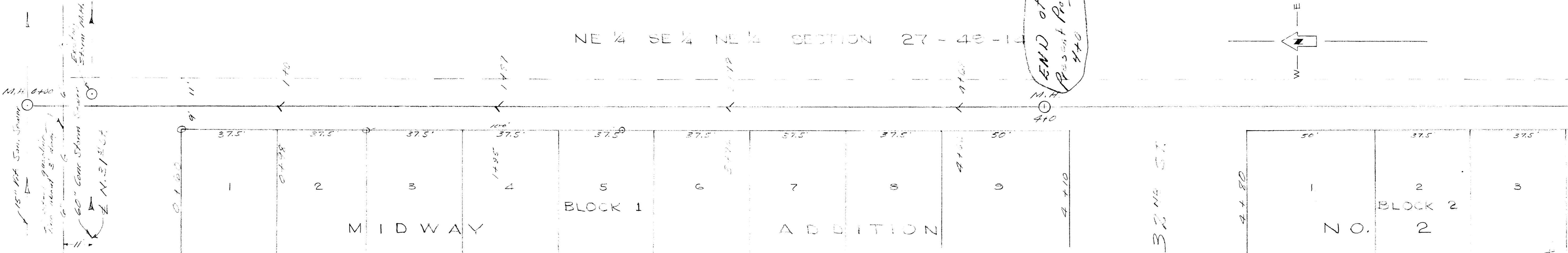
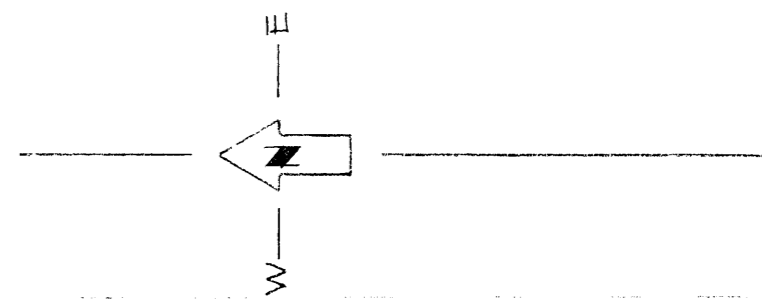


NE 1/4 SE 1/4 NE 1/4 SECTION 27-40-14

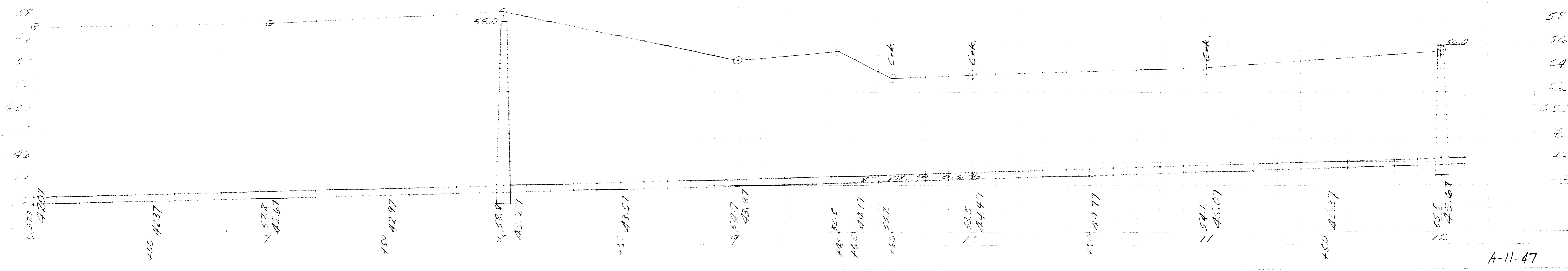
END of  
Present Project  
440



S 1/4 SE 1/4 NE 1/4 SECTION 27-40-14

No. END PROJECT  
at 440

CITY OF SUPERIOR ENGINEERING DEPARTMENT		
PROPOSED SANITARY SEWER TO SERVE MIDWAY ADDITION NO 2 AND ADJACENT AREAS.		
C.C. DENWETH R.H. DANN		MAYOR CITY ENGINEER
DES. - FMS	ADDD	FILE NO.
DRN. - FMS		3-1054
DATE - 4-22-68	SCALE 1"=20' H.	1"=4' VERT.



A-11-47

San. Sewer under from 3rd St (Solid)