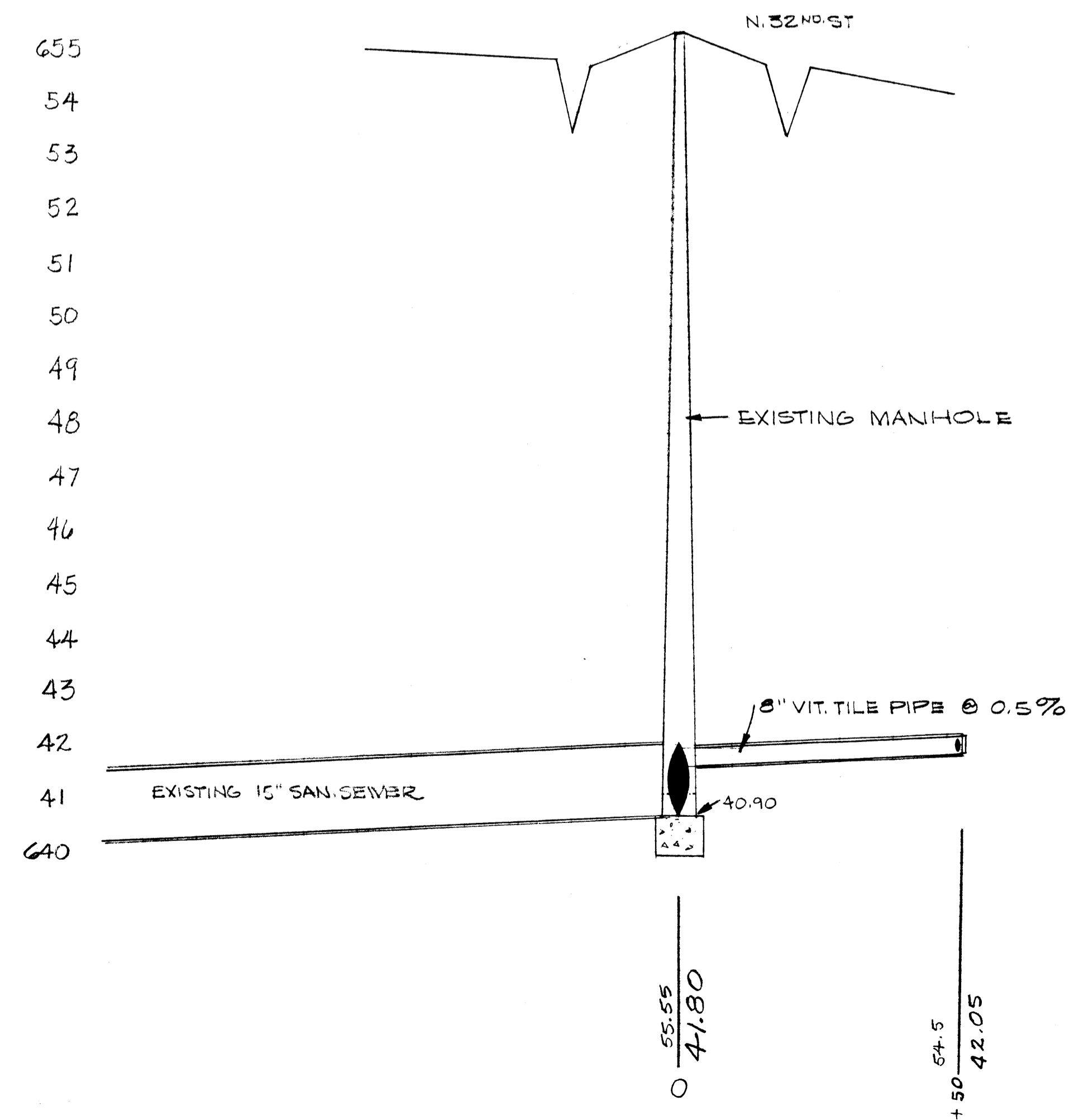
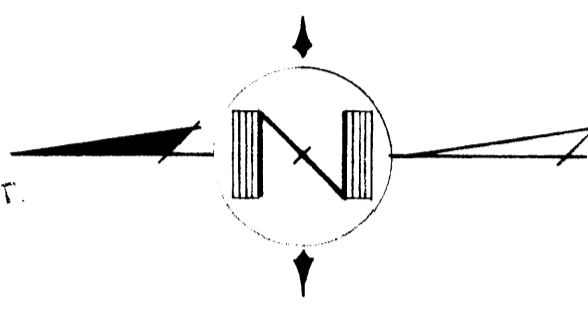


NOTE: STATION 0+0 TO 0+20 SHALL BE 100% SAND BACKFILL. THE TOP 12" SHALL BE GRAVEL & 2" HOT MIX ASPHALT.



CITY OF SUPERIOR ENGINEERING DEPARTMENT		
PROPOSED SANITARY SEWER BLOCK 5 & 6, MIDWAY ADDITION		
C.C. DENEVETH E.M. SEGUN		MAYOR CITY ENGINEER
DES. L.M.P.	APPD.	FILE NO.
DRN. V.R.U.		
DATE 5-11-73	SCALE 1"=20'	