

I hereby certify that this plan, specification, or report was prepared by me or under my supervision and that I am a duly Registered Engineer under the laws of the State of Wisconsin.

3/2/90



**Galstman
Woods
Associates**

**ST. FRANCIS
NURSING HOME EXPANSION
SUPERIOR, WISCONSIN**

project:

SITE PLAN

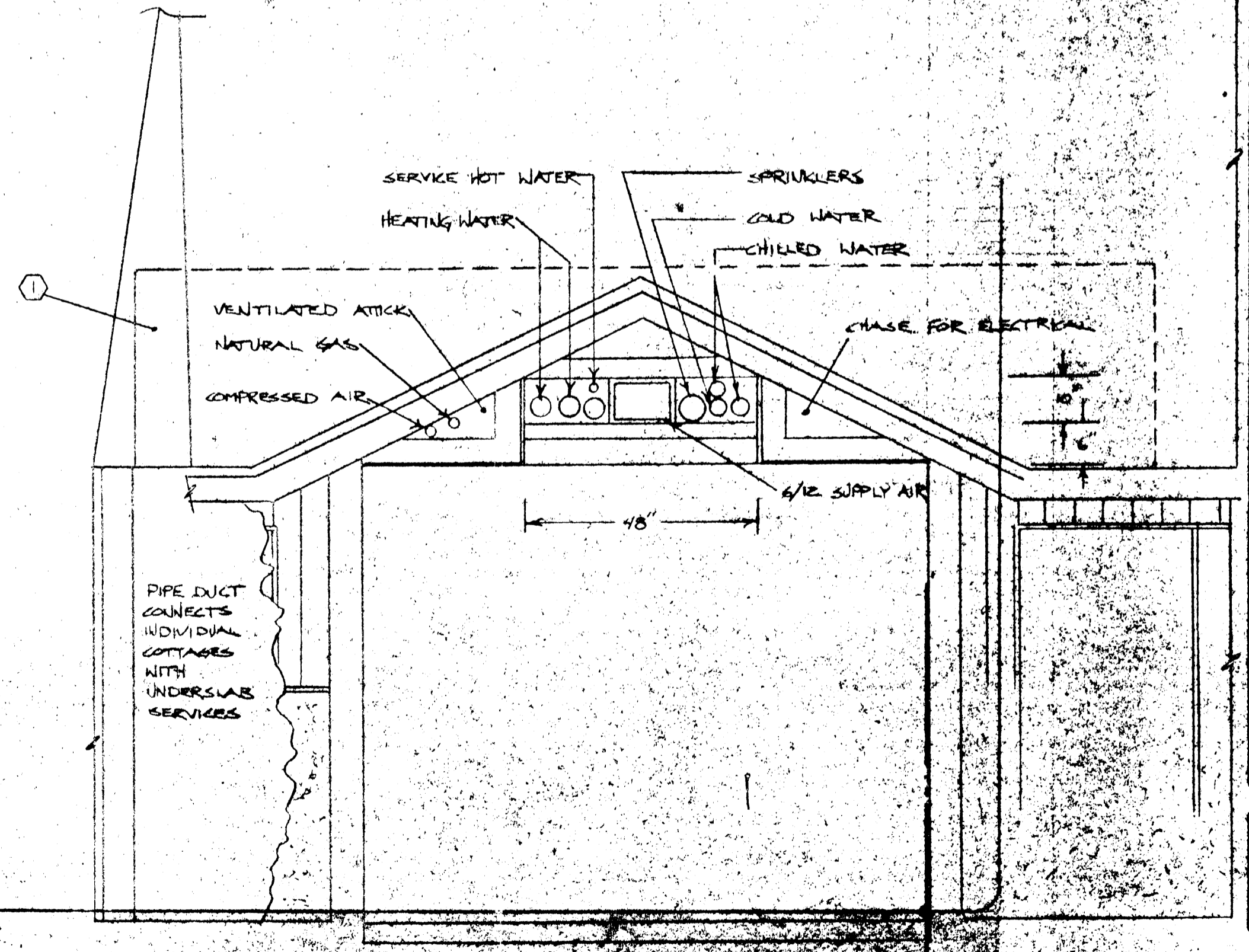
REVISIONS

KEYED NOTES

- ① PIPE BRANCHES AND FIRE SPRINKLER DRY VALVES INSTALLED WITHIN INSULATED AND ACCESSIBLE SPACE BUILT UP ABOVE CEILING-BETWEEN COTTAGES.
- ② 1" GAS LINE
2 1/2" COLD WATER
2 1/2" HOT WATER S & R
6" SPRINKLERS
4" CHILLED WATER S & R
4" HEATING S & R
- ③ 3/4" GAS LINE
2" COLD WATER
2" HOT WATER S & R
6" SPRINKLERS
2 1/2" CHILLED WATER S & R
2 1/2" HEATING S & R
- ④ 1 1/3" GAS LINE
3" COLD WATER
3" HOT WATER S & R 1" R
6" SPRINKLERS
4" CHILLED WATER S & R
4" HEATING S & R
- ⑤ 1 1/4" GAS
3" COLD WATER
3" DOMESTIC HOT WATER SUPPLY
1" HOT WATER RETURN
6" SPRINKLERS
6" CHILLED WATER SUPPLY & RETURN
6" HOT WATER SUPPLY & RETURN
- ⑥ ARRANGE FOR SUPERIOR WATER LIGHT AND POWER TO EXTEND 2" H.P. GAS SERVICE ALONG PROPERTY LINE TO BOILER ROOM.
- ⑦ ARRANGE FOR SUPERIOR WATER LIGHT AND POWER TO INSTALL VALVE UNDER CURB WITH 8" WATER SERVICE.
- ⑧ PROVIDE EXTENSION OF SEWER COMPLETE WITH MANHOLES AS REQUIRED. ENGAGE CIVIL ENGINEER REGISTERED IN WISCONSIN TO APPROVE SHOT-DRAWING. OBTAIN PERMITS FROM DNR & CITY.

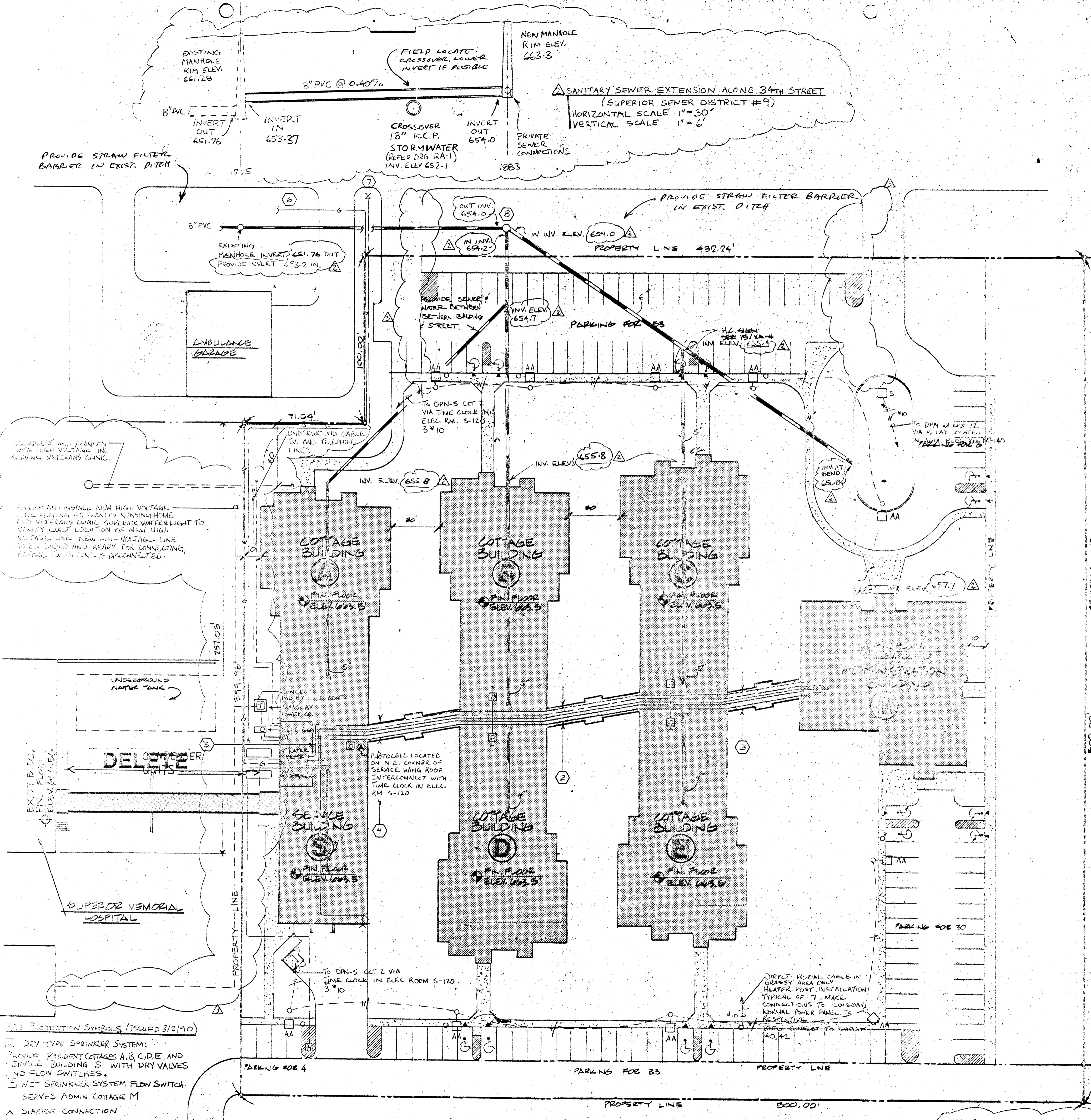
GENERAL NOTES

- A COVER DRAINS WITH 2" THICK STYROFOAM 4" WIDE WHEREVER ~~NECESSARY~~ (FIELD PAVEMENT)
- B THE INVERT ELEVATION OF THE SANITARY FOR THE PLUMBING FIXTURE THAT IS THE FARTHEST AWAY FROM WHERE THE SANITARY LEAVES THE BUILDING TYPICAL OF ALL BUILDINGS) SHALL BE 18" BELOW FINISHED FLOOR ELEVATION (ADD 1.23)
- C PLAN RE-DRAWN MARCH 8, 1990 ACCORDING TO ADDENDUM 1.05.
- D THE PIPES SHOWN STACKED ABOVE CEILING SHALL BE PLACED ON TRAPEZE HANGER OR HUNG BY INDIVIDUAL HANGERS. REFER TO SPECIFICATION SECTION 15140. (ADD 1.30)



NOTE: ALL CABLES CAN BE DIRECT BURIED IN GRASSY AREAS.

183 COLLECTION THROUGH PASSAGEWAY 18" x 1'-0" (SUBJECT TO ARCHITECT'S DETAIL)



- SEE PROTECTION SYMBOLS (ISSUED 3/2/90)
- ☐ DRY TYPE SPRINKLER SYSTEM: PROVIDE RESIDENT COTTAGES A, B, C, D, E, AND SERVICE BUILDING S WITH DRY VALVES AND FLOW SWITCHES.
 - ☐ WET SPRINKLER SYSTEM FLOW SWITCH SERVES ADMIN. COTTAGE M
 - ▲ STAIRCASE CONNECTION
 - ☐ OUTDOOR HYDRANT

SITE PLAN
1" = 50'-0"
NORTH
158 TOTAL PARKING SPACES