

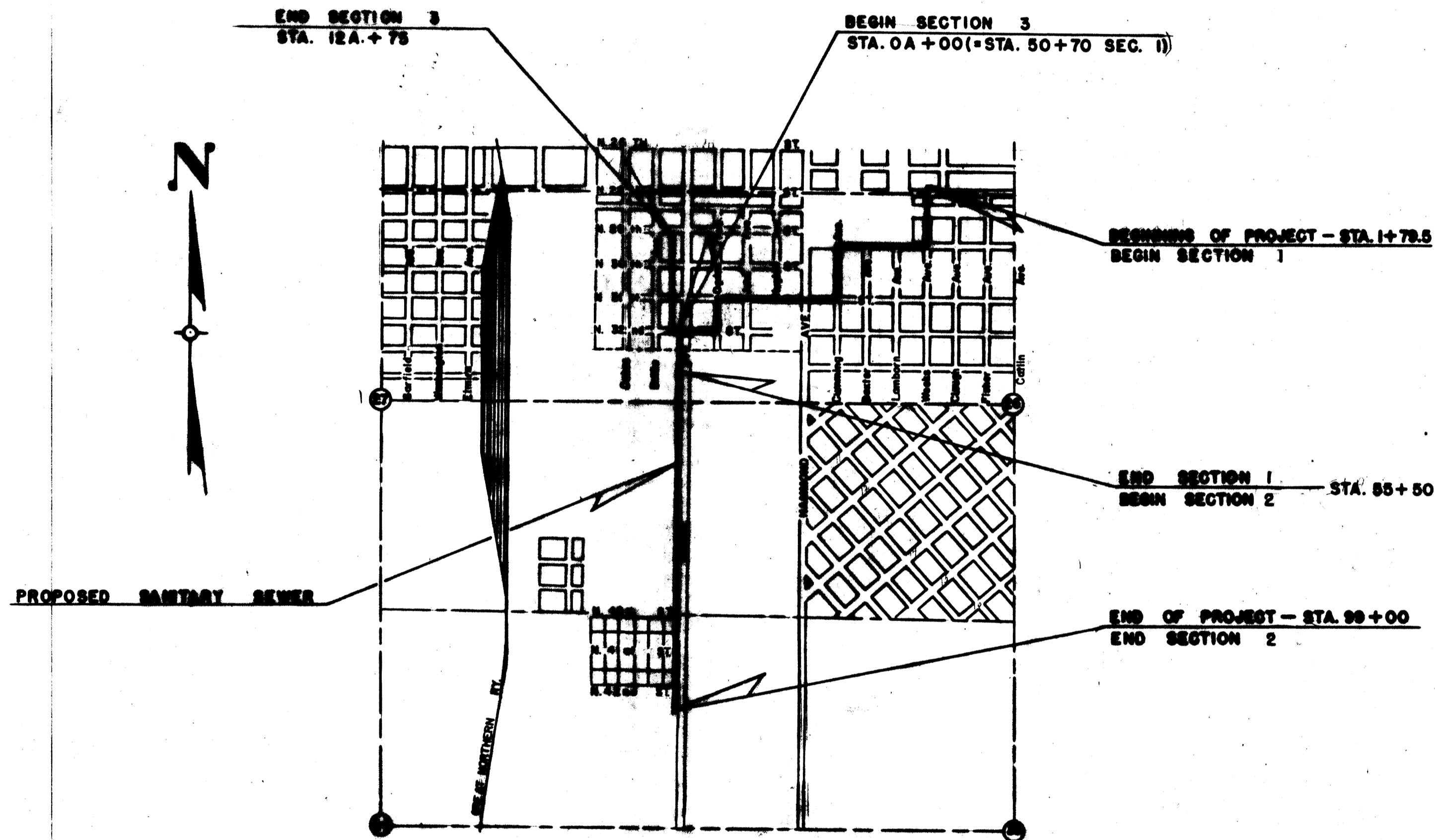
INDEX OF SHEETS

SHEET NO. 1	TITLE & QUANTITIES
SHEET NO. 2	LOCATION MAP
SHEET NO. 3	INDEX TO PROPERTY MAPS
SHEET NO. 4-12	PROPERTY MAPS
SHEET NO. 13	TYPICAL DETAILS
SHEET NO. 14-18	PLAN & PROFILE

CITY OF SUPERIOR, WISCONSIN

PLAN AND PROFILE OF PROPOSED

SANITARY SEWER - DISTRICT # 9



LOCATION SKETCH
SCALE 1" = 1200'

CONVENTIONAL SIGNS

- MANHOLE
- PROPOSED SAN. SEWER
- EXISTING STORM SEWER

ESTIMATE OF MAJOR QUANTITIES

SEC. 1 - STA. 1+80 - STA. 55+50

- 16 MANHOLES
- 70 LIN. FT. 20" COATED WELDED STEEL CASING (76A.)
- 2800 LIN. FT. 18" VITRIFIED CLAY PIPE
- 2300 LIN. FT. 15" VITRIFIED CLAY PIPE
- 80 LIN. FT. 18" ASBESTOS BONDED COR. METAL PIPE
- 210 LIN. FT. 15" ASBESTOS BONDED COR. METAL PIPE
- CONNECTION TO 3102 OGDEN AVE.
- CONNECTION TO 3104 OGDEN AVE.
- CONNECTION TO 3110 OGDEN AVE.
- CONNECTION TO 3114 OGDEN AVE.
- CONNECTION TO 3118 OGDEN AVE.
- CONNECTION TO 3215 TOWER AVE.
- CONNECTION TO 3223 TOWER AVE.

SEC. 2 - STA. 55+50 - STA. 99+00

- 11 MANHOLES
- 350 LIN. FT. 12" VITRIFIED CLAY PIPE
- 2000 LIN. FT. 10" VITRIFIED CLAY PIPE
- 2000 LIN. FT. 8" VITRIFIED CLAY PIPE
- CONNECTION TO 3925 TOWER AVE.
- CONNECTION TO 4127 TOWER AVE.

SEC. 3 - STA. 0A+00 - STA. 12A+75

- 4 MANHOLES
- 1275 LIN. FT. 8" VITRIFIED CLAY PIPE

NOTE: ALL 8" & 10" VITRIFIED CLAY SEWER PIPE TO BE EXTRA STRENGTH PIPE



CITY OF SUPERIOR ENGINEERING DEPARTMENT		
PLAN & PROFILE OF PROPOSED SANITARY SEWER - DISTRICT #9		
W.R.L. TAYLOR	CITY MANAGER	
E.W. BERG	CITY ENGINEER	
DES. E.W.B.	APPD. <i>E.W. Berg</i>	FILE NO.
DRN. L.M.P.		3-914
DATE 1-7-59	SCALE-AS SHOWN	