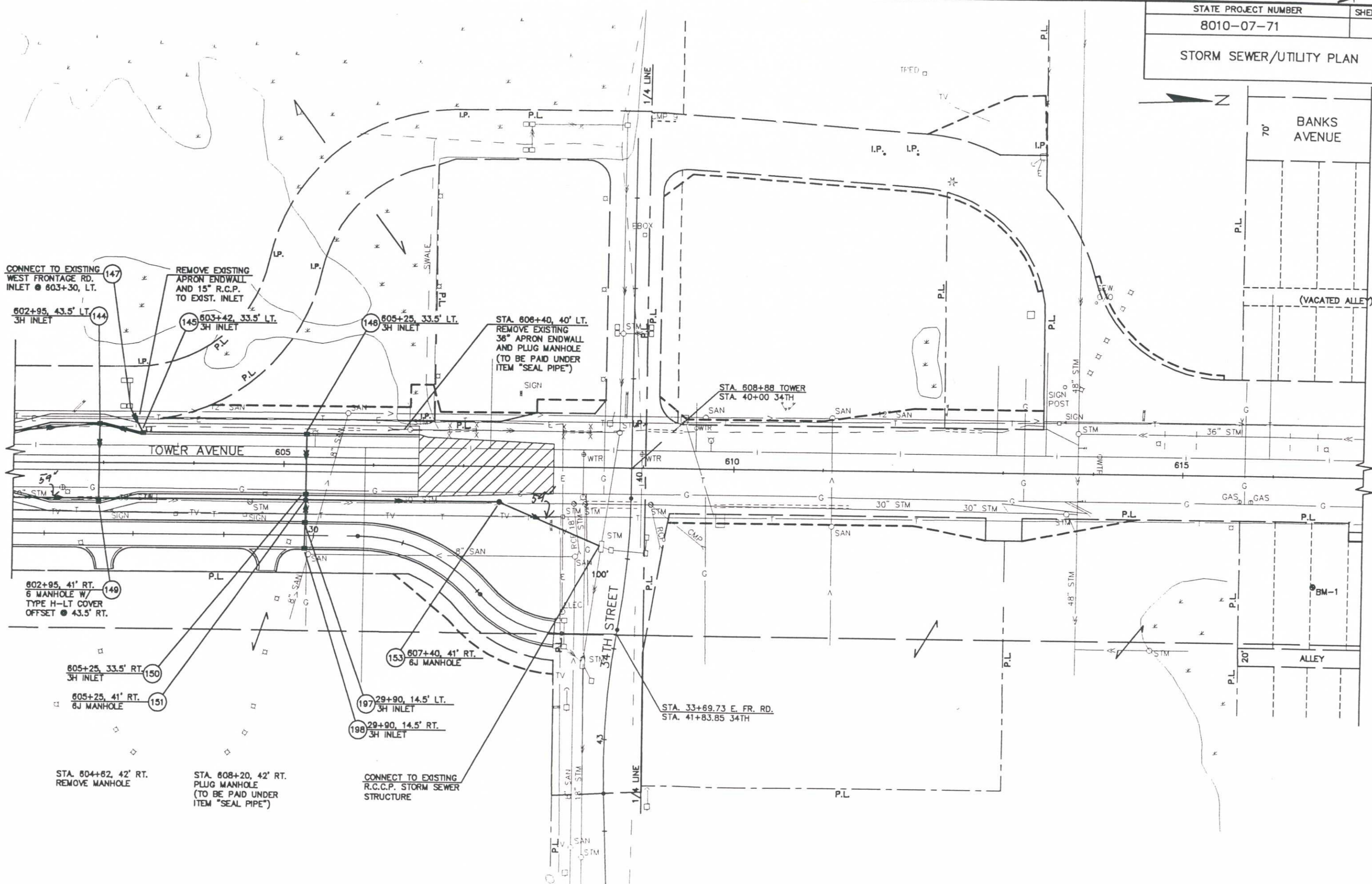


STORM SEWER/UTILITY PLAN



CONNECT TO EXISTING WEST FRONTAGE RD. INLET @ 603+30, LT.

REMOVE EXISTING APRON ENDWALL AND 15" R.C.P. TO EXIST. INLET

STA. 608+40, 40' LT. REMOVE EXISTING 36" APRON ENDWALL AND PLUG MANHOLE (TO BE PAID UNDER ITEM "SEAL PIPE")

STA. 608+88 TOWER STA. 40+00 34TH

TOWER AVENUE

34TH STREET

BANKS AVENUE

(VACATED ALLEY)

ALLEY

BM-1

602+95, 43.5' LT. 3H INLET

603+42, 33.5' LT. 3H INLET

605+25, 33.5' LT. 3H INLET

602+95, 41' RT. 6 MANHOLE W/ TYPE H-LT COVER OFFSET @ 43.5' RT.

605+25, 33.5' RT. 3H INLET

605+25, 41' RT. 6J MANHOLE

607+40, 41' RT. 6J MANHOLE

29+90, 14.5' RT. 3H INLET

29+90, 14.5' RT. 3H INLET

STA. 33+69.73 E. FR. RD. STA. 41+83.85 34TH

STA. 604+62, 42' RT. REMOVE MANHOLE

STA. 608+20, 42' RT. PLUG MANHOLE (TO BE PAID UNDER ITEM "SEAL PIPE")

CONNECT TO EXISTING R.C.C.P. STORM SEWER STRUCTURE