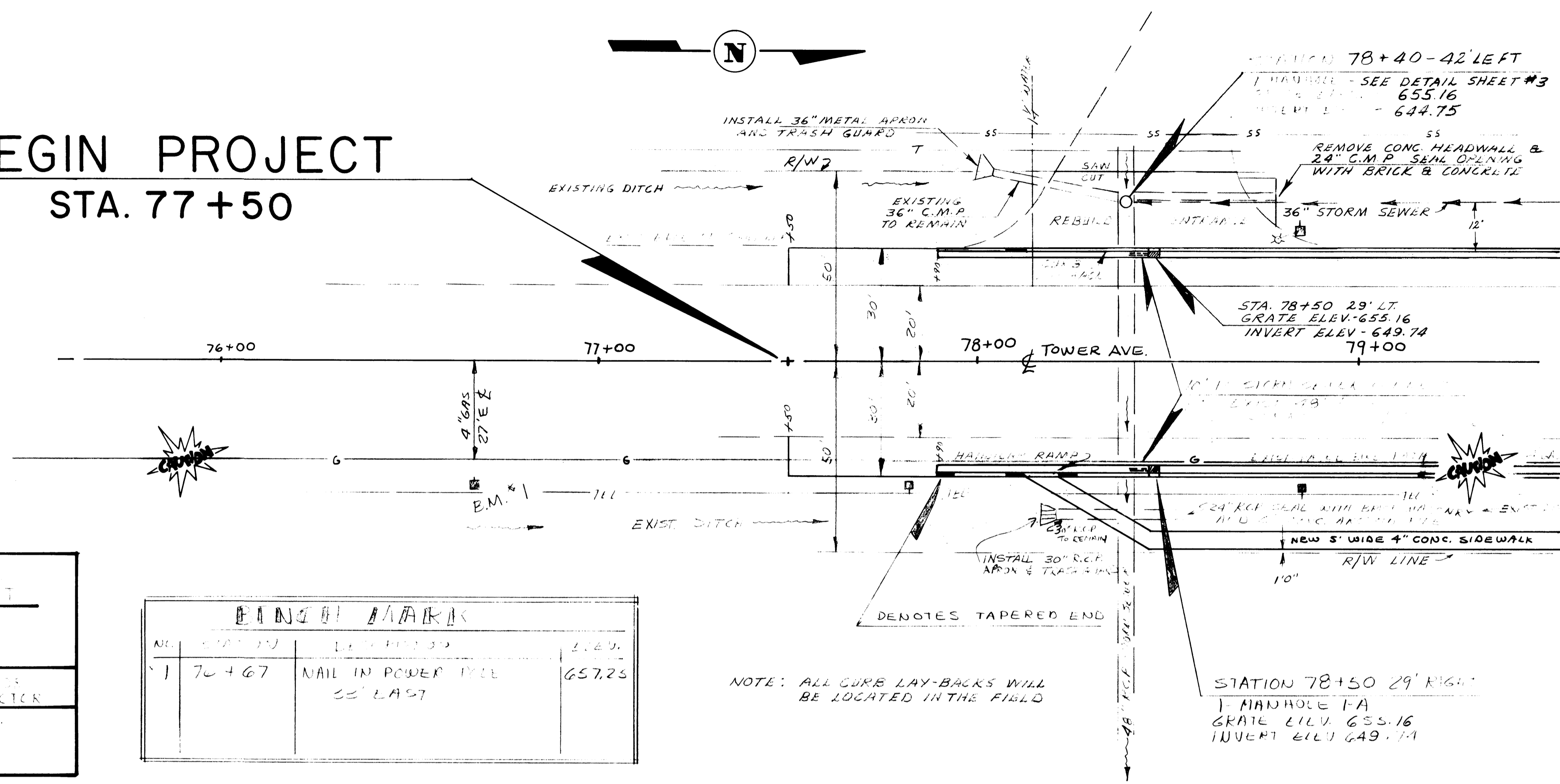


# BEGIN PROJECT STA. 77+50

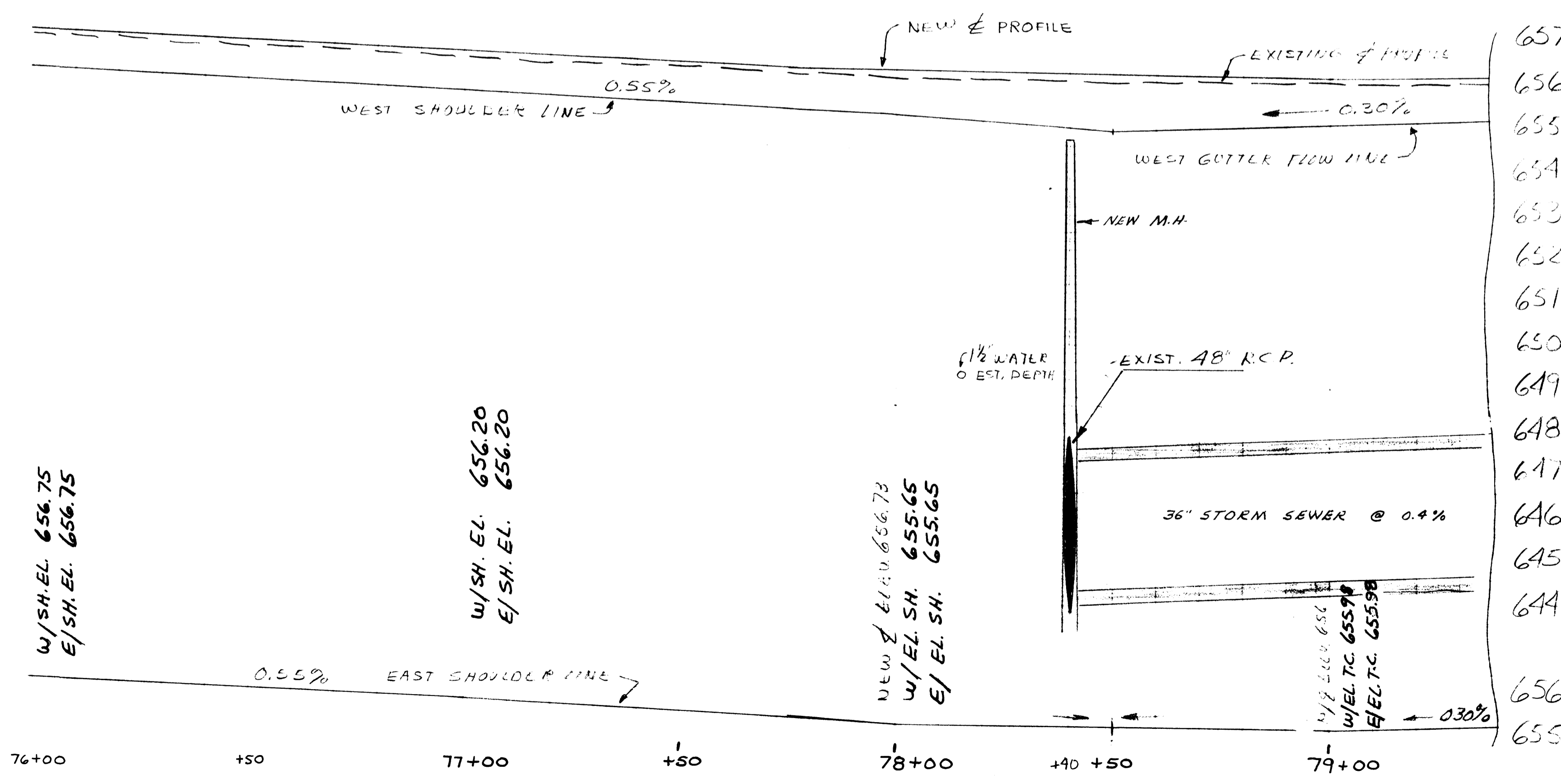


CITY OF SUPERIOR ENGINEERING DEPARTMENT		
TOWER AVE. N. 28 <sup>th</sup> ST TO N. 33 <sup>rd</sup> ST.		
DESIGNED BY DEL LAVALL	DATE 11/1/06	MANAGER MAYOR
CHECKED BY ERIN SAFF	SHEET 4 OF 19	FILE NO.
DATE		

PINNAC MARK		
NO.	DESCRIPTION	ELEV.
1	NAIL IN POWER POLE 33' LAST	657.25

NOTE: ALL CURB LAY-BACKS WILL BE LOCATED IN THE FIELD

657  
656  
655  
654  
653  
652  
651  
650  
649  
648  
647  
646  
645  
  
657  
656  
655



W/SH. EL. 656.75  
E/SH. EL. 656.75

W/SH. EL. 656.20  
E/SH. EL. 656.20

NEW M.H. EL. 656.73  
W/EL. SH. 655.65  
E/EL. SH. 655.65

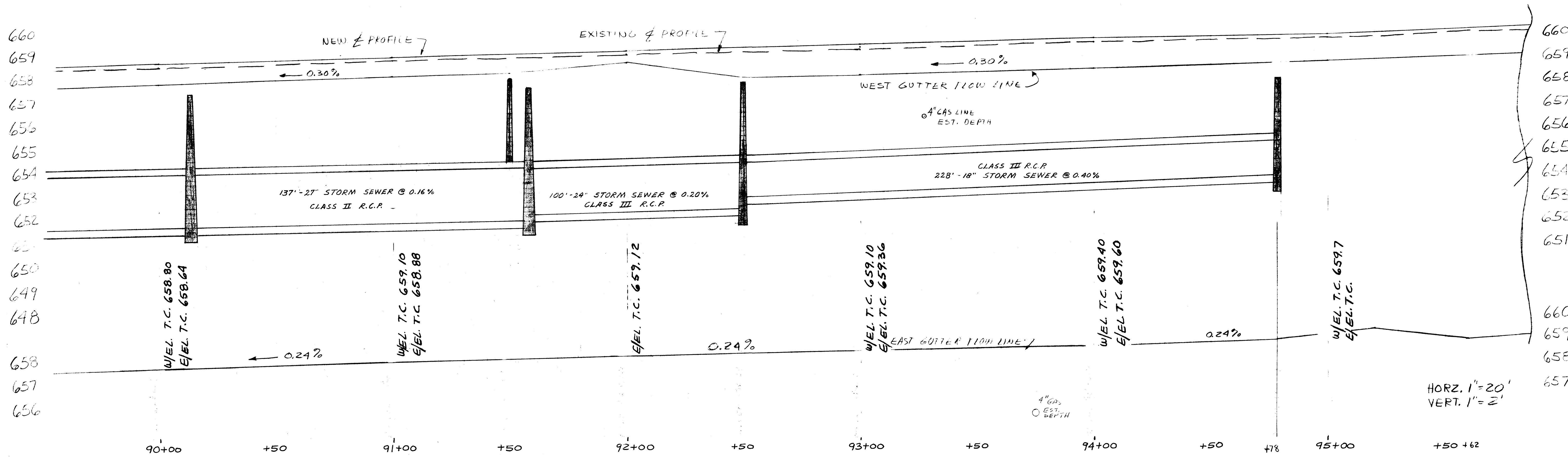
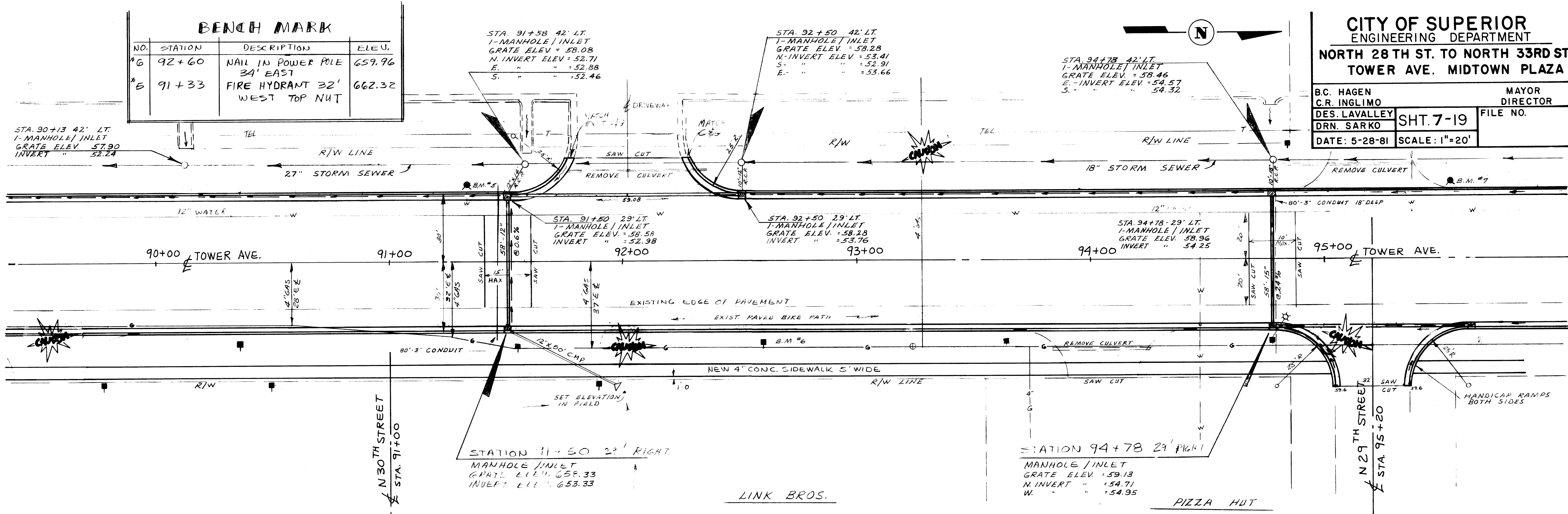
W/EL. T.C. 655.98  
E/EL. T.C. 655.98

BENCH MARK			
NO.	STATION	DESCRIPTION	ELEV.
#6	92+60	NAIL IN POWER POLE 34' EAST	659.96
#5	91+33	FIRE HYDRANT 32' WEST TOP NUT	662.32

**CITY OF SUPERIOR**  
ENGINEERING DEPARTMENT  
NORTH 28TH ST. TO NORTH 33RD ST.  
TOWER AVE. MIDTOWN PLAZA

B.C. HAGEN  
C.R. INGLIMO  
DES. LAVALLEY  
DRN. SARKO  
DATE: 5-28-81

MAJOR  
DIRECTOR  
FILE NO.  
SHT. 7-19  
SCALE: 1"=20'



HORZ. 1"=20'  
VERT. 1"=2'

**BENCH MARKS**

NO.	STATION	DESCRIPTION	ELEV.
4	87+13	FIRE HYDRANT 32' WEST (TO BE RELOCATED) TRIBUT	660.90
3	84+77	NAIL IN POWER POLE 33' EAST	658.45

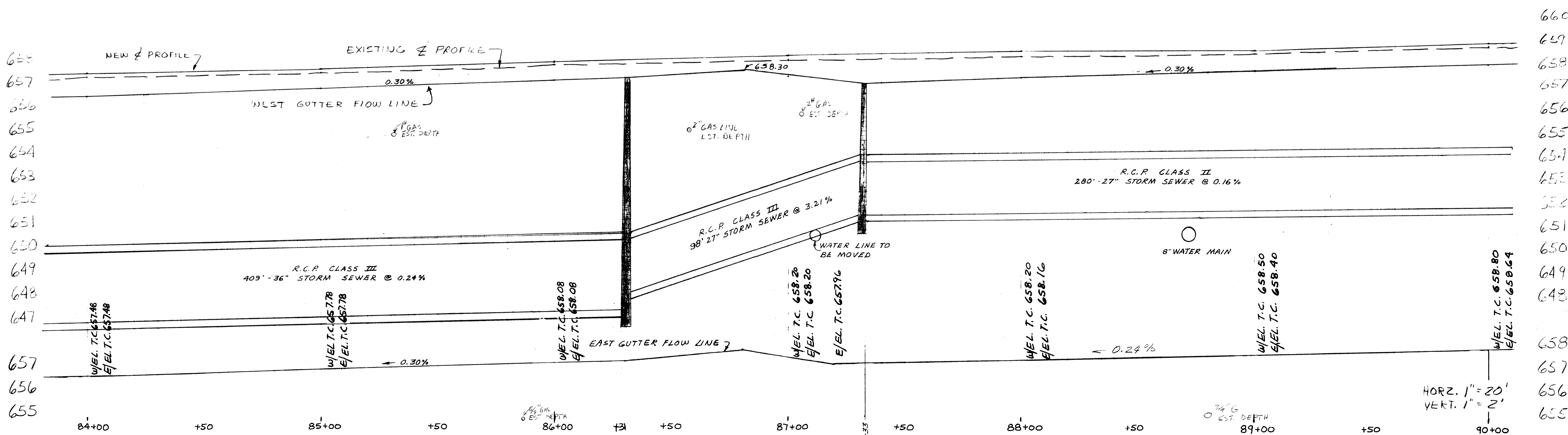
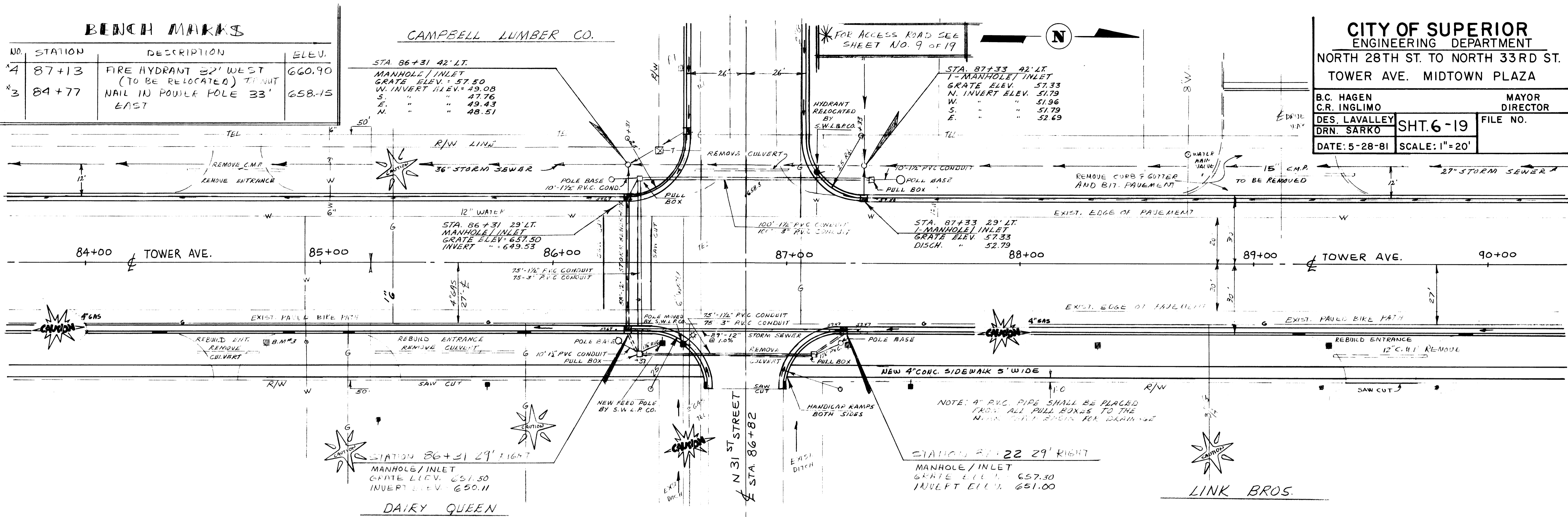
CAMPELL LUMBER CO.

**CITY OF SUPERIOR**  
ENGINEERING DEPARTMENT  
NORTH 28TH ST. TO NORTH 33RD ST.  
TOWER AVE. MIDTOWN PLAZA

B.C. HAGEN  
C.R. INGLIMO  
MAYOR DIRECTOR

DES. LAVALLEY  
DRN. SARKO  
SHT. 6-19  
FILE NO.

DATE: 5-28-81  
SCALE: 1" = 20'



HORZ. 1" = 20'  
VERT. 1" = 2'

BENCH MARK			
NO.	STATION	DESCRIPTION	ELEV.
12	83+12	FIRE HYDRANT 34' WEST	666.03

**CITY OF SUPERIOR**  
ENGINEERING DEPARTMENT

NORTH 28TH ST. TO NORTH 33RD ST.  
TOWER AVE. MIDTOWN PLAZA

B.C. HAGEN C.R. INGLIMO	MAYOR DIRECTOR
DES. LAVALLEY	SHT. 5-19
DRN. SARKO	FILE NO.
DATE: 5-28-81	SCALE: 1"=20'

