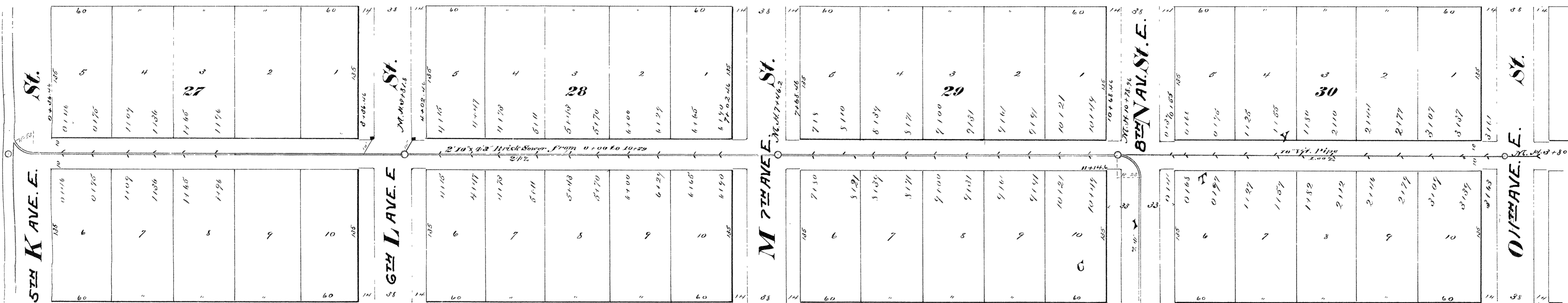


BAY

EAST 2ND ST.

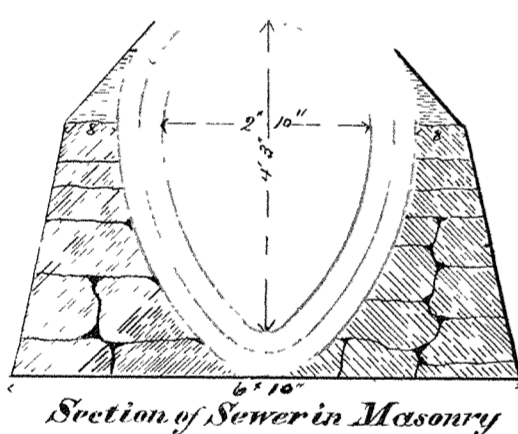
St.



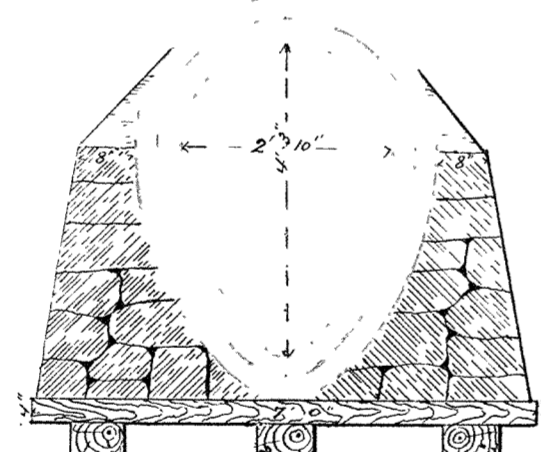
W. THIRD
CITY OF SUPERIOR

SEWER PLAN

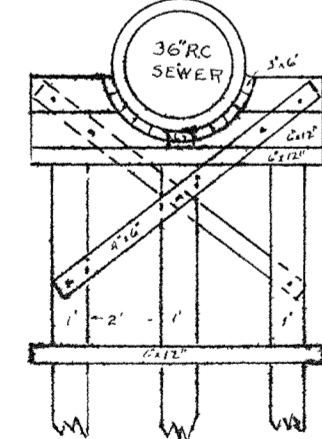
Contract let May 9, 1891
completed Sept. 28, 1891
M. J. Germund & Co. Contractor
W. G. Coleman, Inspector
E. B. Banks, City Engineer



Section of Sewer in Masonry



Section of Sewer on Piles
(OBSOLETE AUG. 1935)



36" REPLACEMENT SEWER

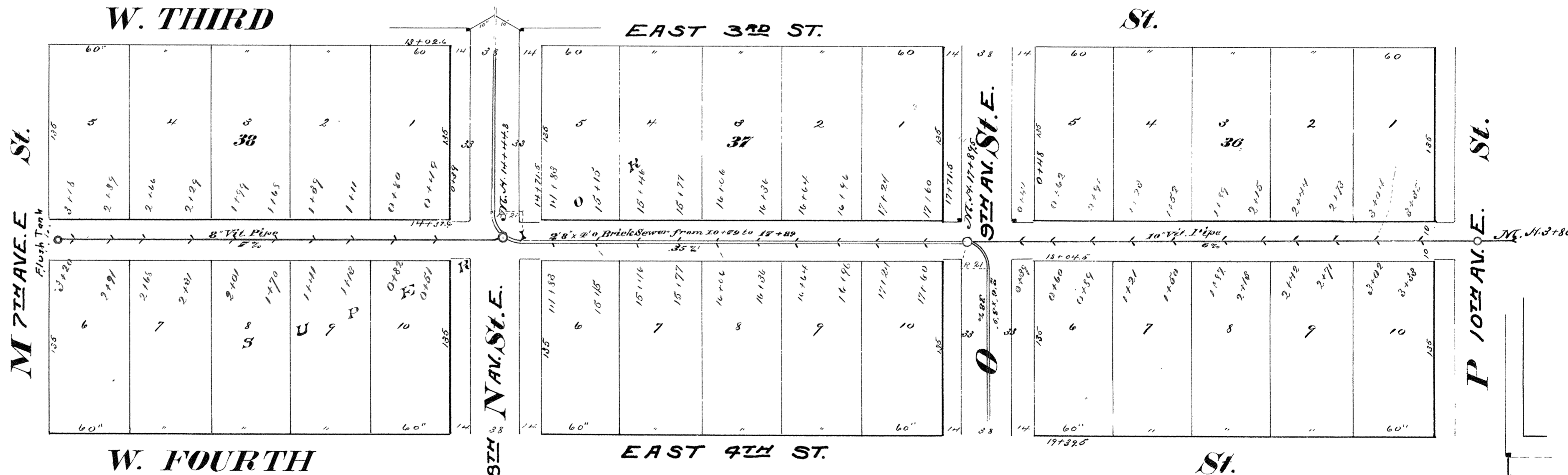
REPLACED WITH 36 R.C. PIPE
FROM STA. 2+16 TO 3+60.

Size of Sewer	Piling		Masonry	
	Begins	Ends	Begins	Ends
2'10" x 4'3"	1+50	3+33	0+50	3+91
2'10" x 4'6"	6+75	7+58	6+75	7+58
2'10" x 4'3"	8+48	8+53	8+48	8+93

W. FOURTH

EAST 4TH ST.

St.



Sewer & Established Street Grades

O Str.	W. Third Str.		H Str.	L Street		M Street		N Street		O Str.	P Str.	Alley bet. 3rd & 4th Sts.		Alley bet. 4th & 5th Sts.	
	W. Side	N. Side		S. Side	East Side	W. Side	E. Side	W. Side	E. Side			E. Side	W. Side	N. Side	S. Side
Street Sewer	Street Sewer	Street Sewer	Street Sewer	Street Sewer	Street Sewer	Street Sewer	Street Sewer	Street Sewer	Street Sewer	Street Sewer	Street Sewer	Street Sewer	Street Sewer	Street Sewer	Street Sewer
15.23			6.536	7.606	7.765	8.485	8.645	9.36	12.20						
							10.63	13.65		14.72	16.52			10.94	9.77

Alley betw. 3rd & 4th St.
N. St.
O. St.

3A-9