

N. 21<sup>ST</sup> ST.

BENCH		MARKS	
NO	STA.	DESCRIPTION	ELEV.
1		GEO. MON. # 2394-13 (21- 8 HILL)	636.122

62.14'

40'

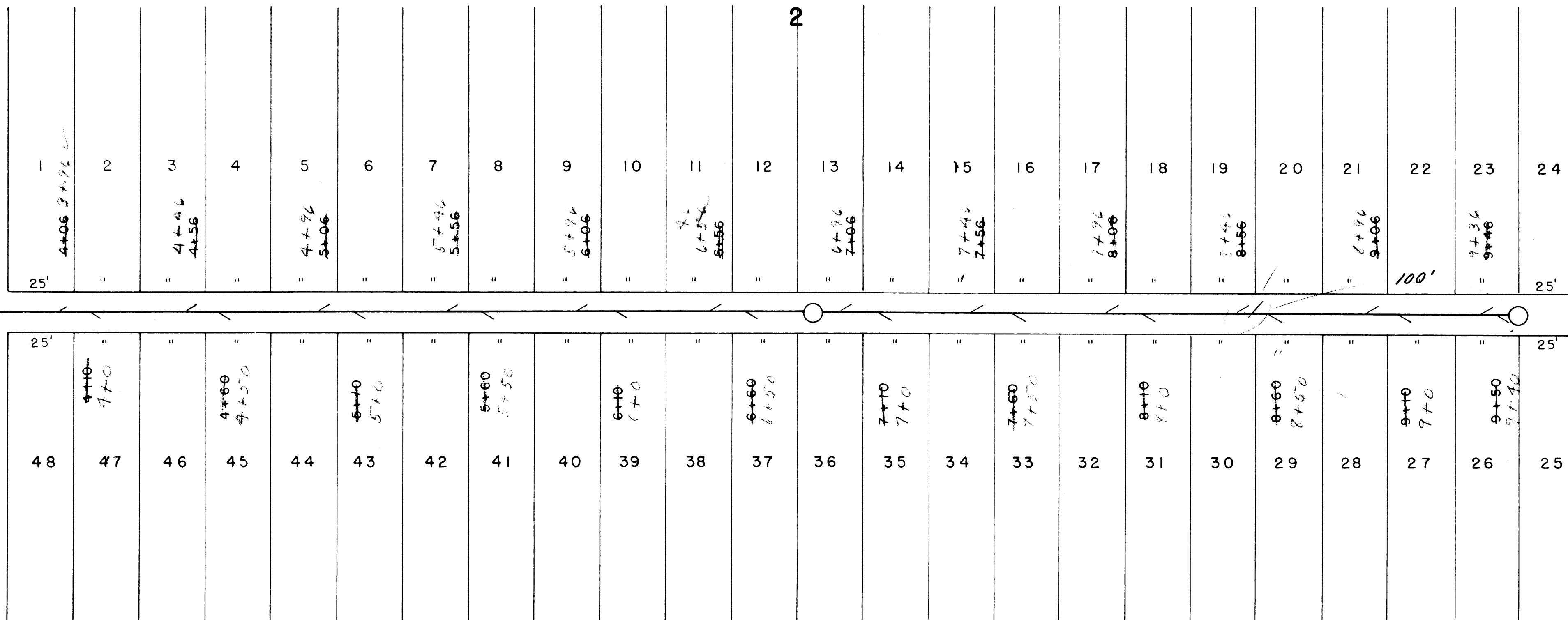
SEE SHEET # 1

26.17'

15'

GATES AVE.

RASPBERRY AVE.



N. 22<sup>ND</sup> ST.

CITY OF SUPERIOR  
ENGINEERING DEPARTMENT  
PROPOSED EXT. SAN. SEWER  
BLK. 2 PARKSIDE ADD.

L.M. HAGEN  
E.W. BERG  
DES. F.M.S. APPD. FILE NO.  
DRN. G.C.W.  
DATE 12-18-59 SCALE 1"=30'

PLAN  
DATE 12-18-59  
BY G.C.W.  
CHECKED BY L.M.H.

PROFILE  
DATE 12-18-59  
BY G.C.W.  
CHECKED BY L.M.H.

