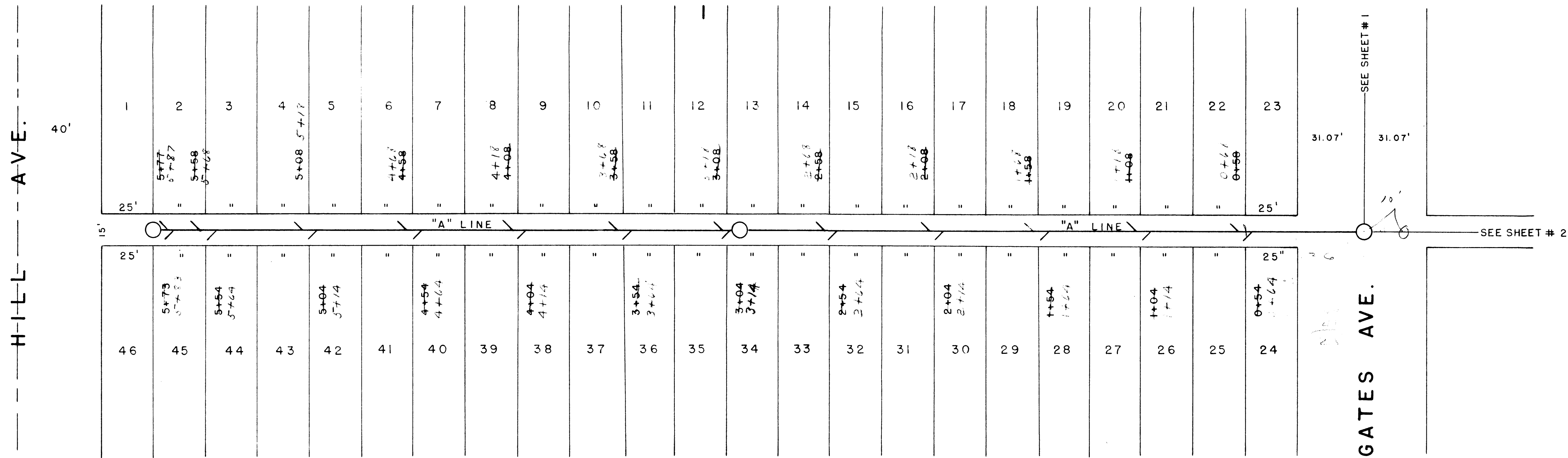


N. 21ST ST.

BENCH MARKS		ELEV.
NO.	STA.	DESCRIPTION
1		GEO. MON. # 2394-13 (21 ST & HILL)
		636.122



CITY OF SUPERIOR
ENGINEERING DEPARTMENT
PROPOSED EXT. SAN. SEWER
BLK. I PARKSIDE ADD.

L.M. HAGEN MAYOR
E.W. BERG CITY ENGINEER

DES. F.M.S. APPD. FILE NO.
DRN. G.C.W.

DATE 12-18-59 SCALE 1" = 30'

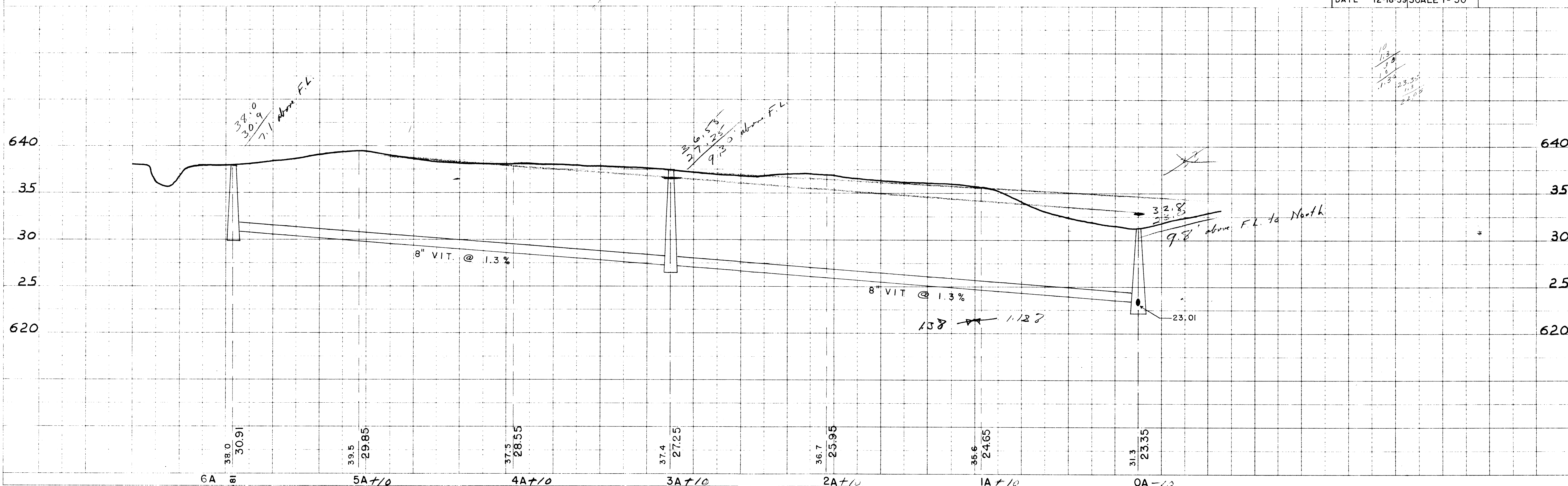


PLATE 1 PLAN PROJECT IN ACCORDANCE WITH THE STANDARD SPECIFICATIONS FOR THE CITY OF SUPERIOR

"A" LINE