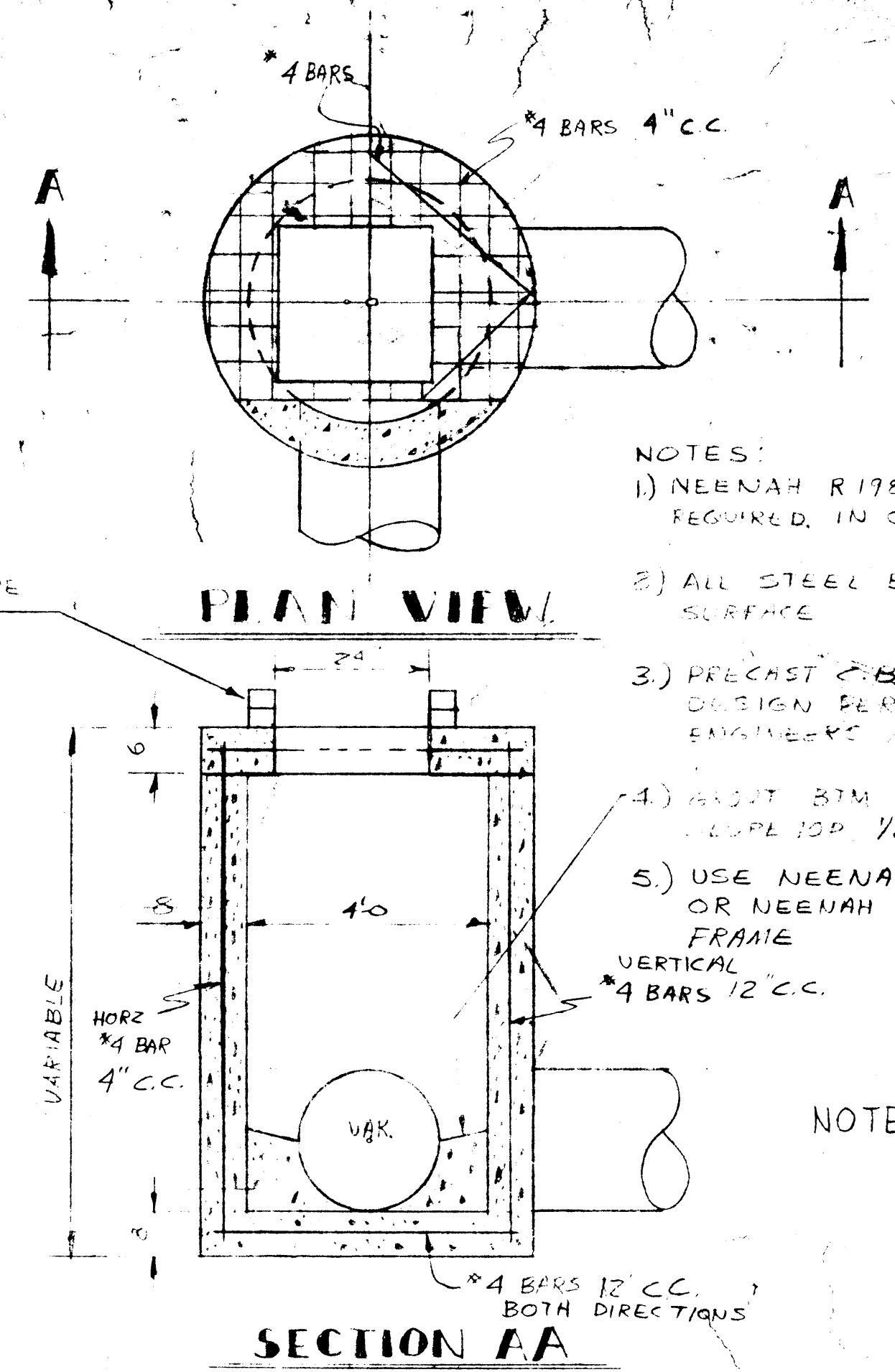
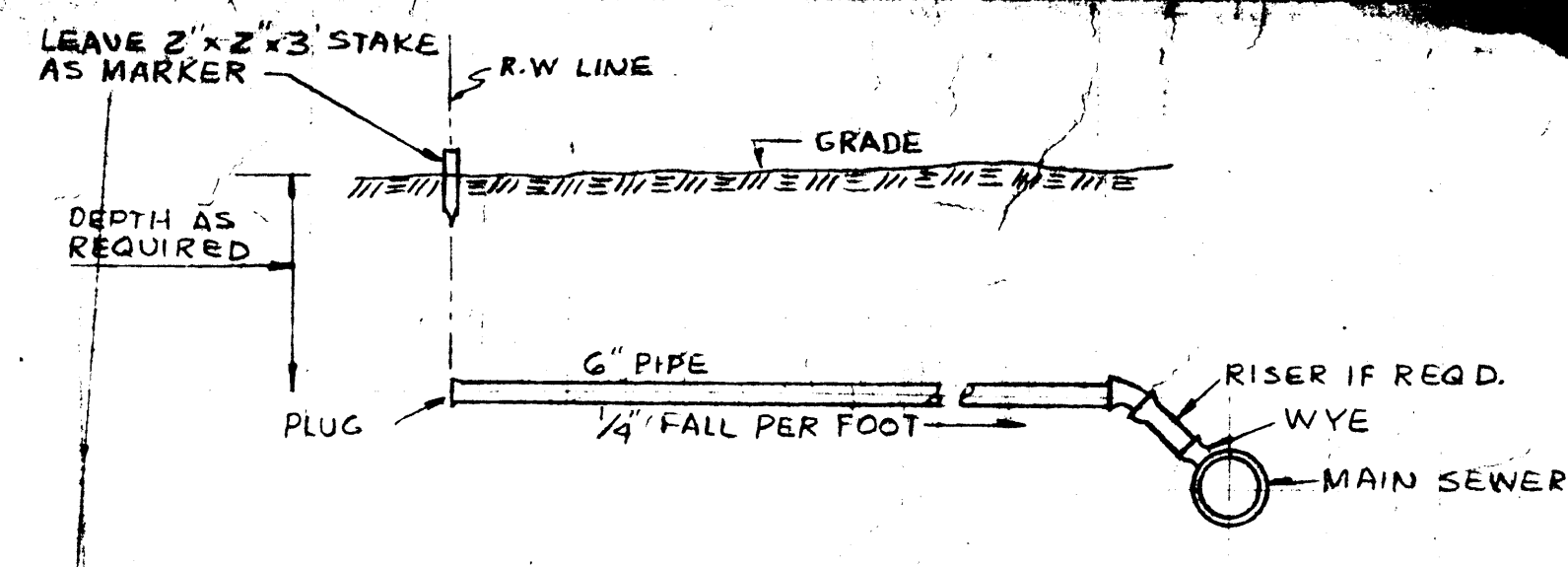


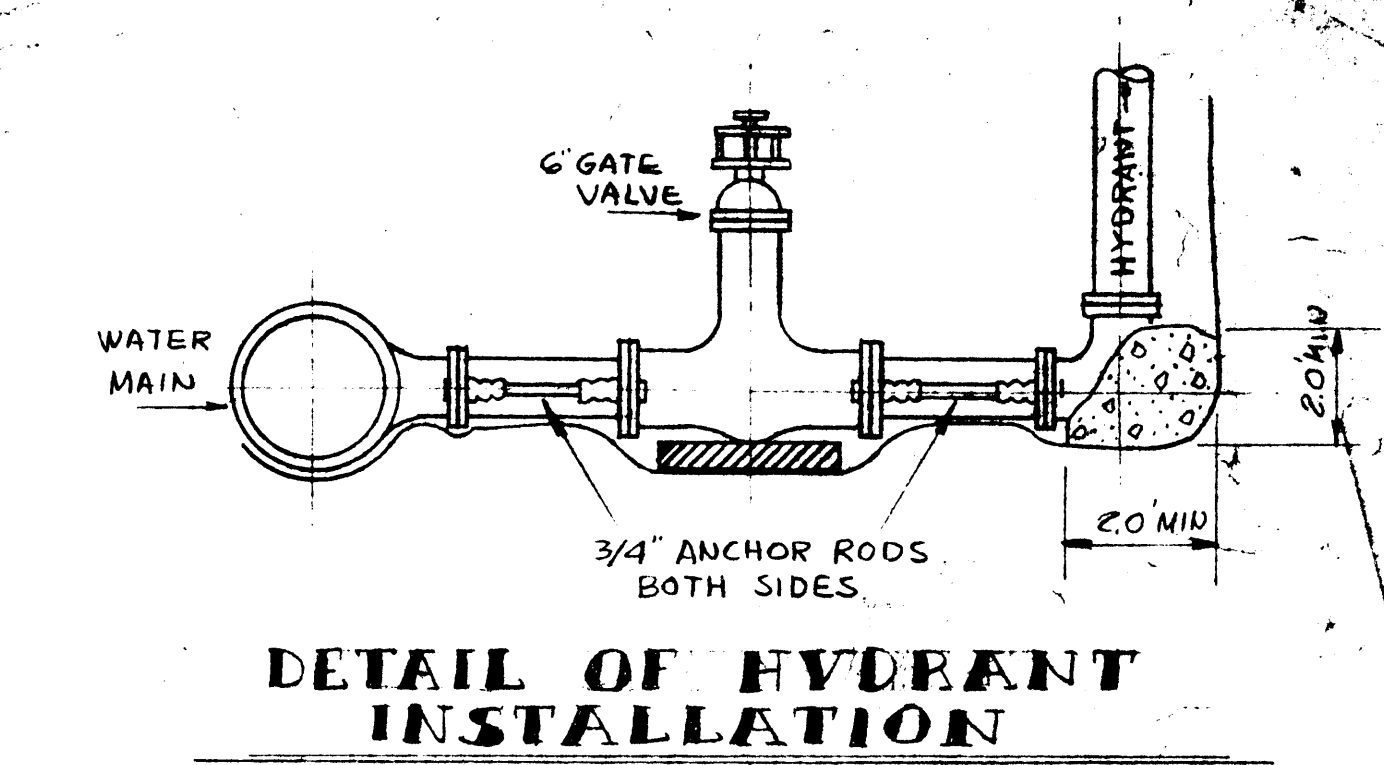
TYPICAL MANHOLE SECTION



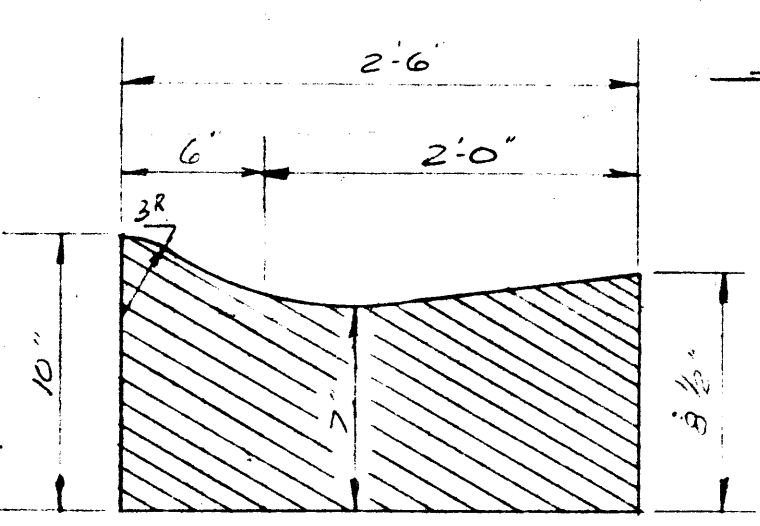
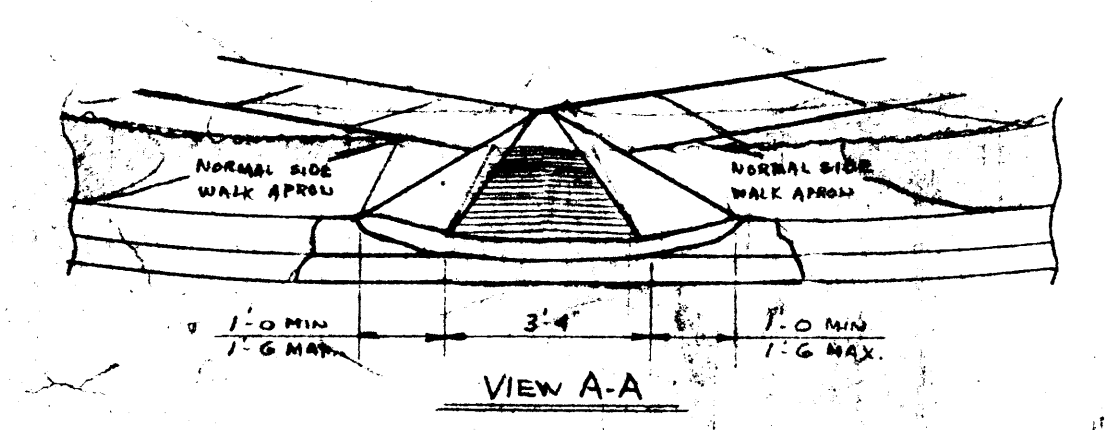
TYPICAL MULTIPLE PIPE C.B. DETAIL



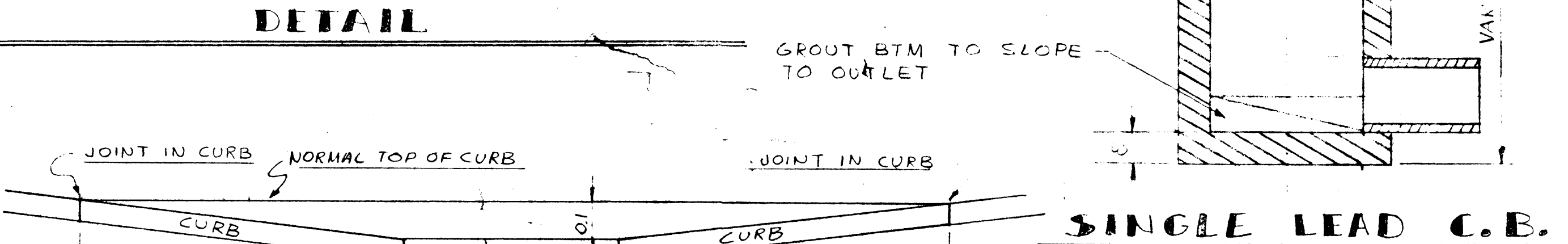
DETAIL OF SANITARY SEWER LOT SERVICE CONNECTION



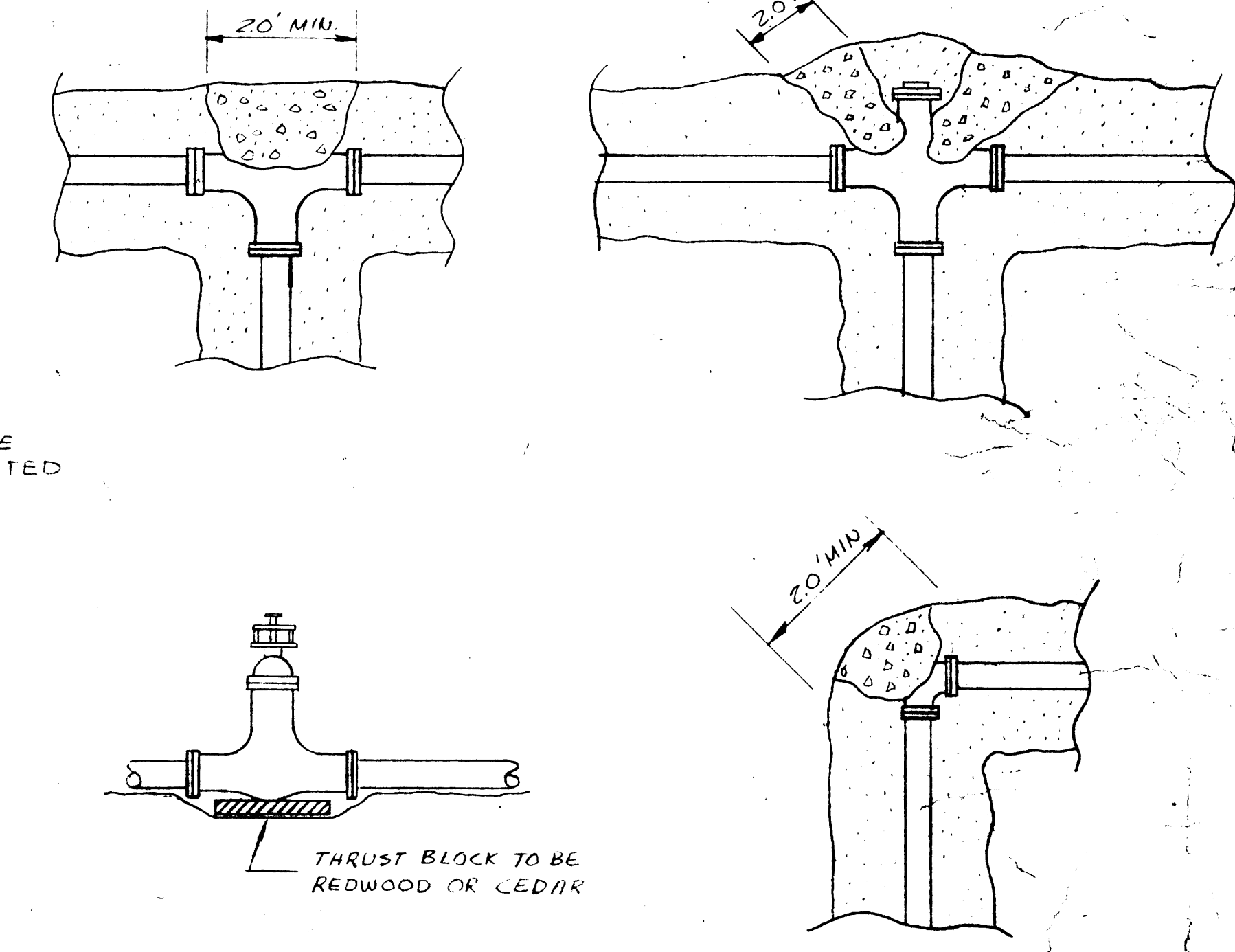
DETAIL OF HYDRANT INSTALLATION



TYPICAL CURB NO SCALE

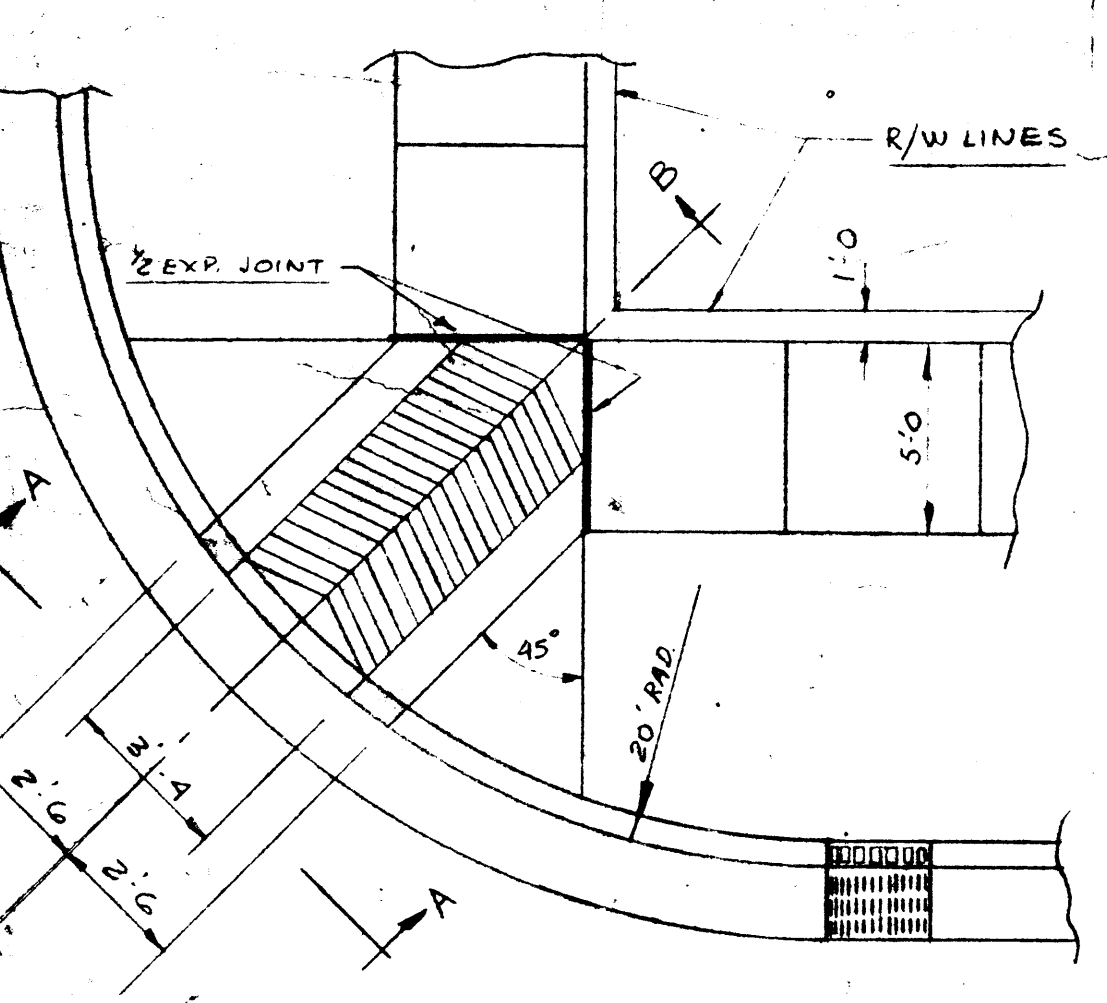


SINGLE LEAD C.B.

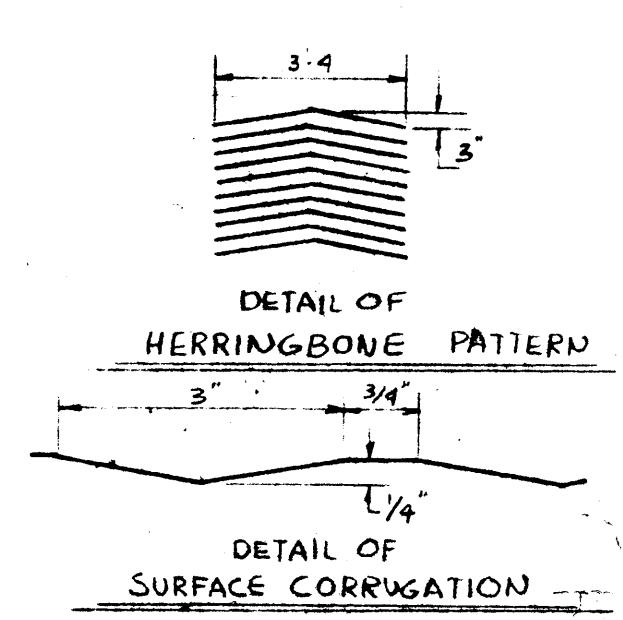


THRUST BLOCK DETAIL

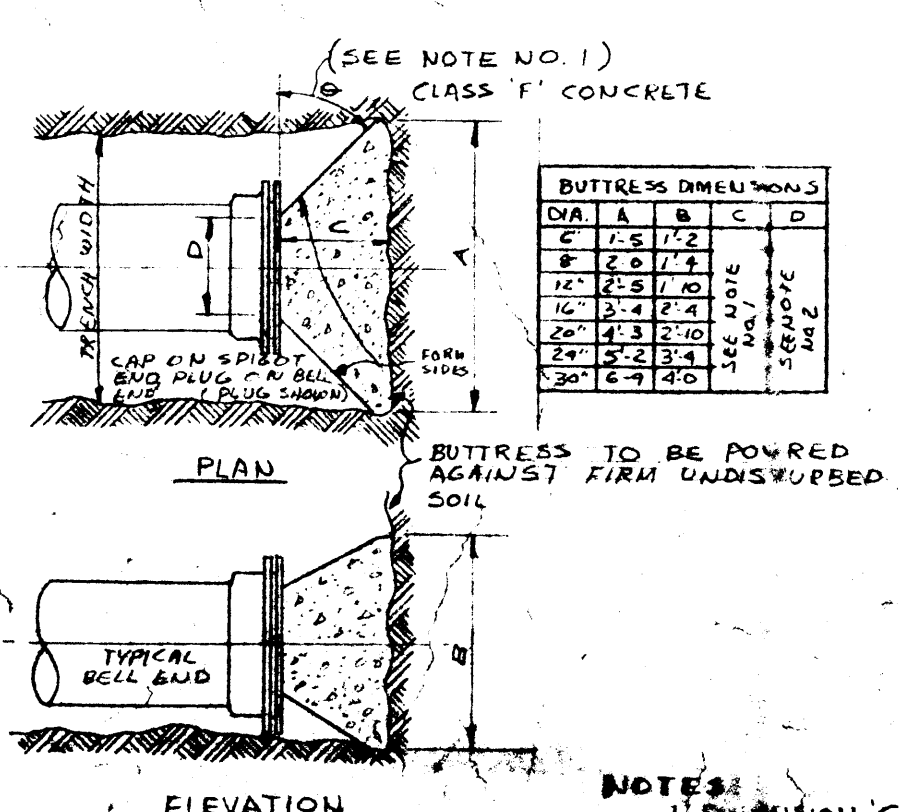
ALL THRUST BLOCKS SHALL BE BETWEEN FITTINGS AND UNDISTURBED TRENCH WALL. POURED CONCRETE THRUST BLOCKS SHALL BE INSTALLED AT ALL WYES, TEES, CROSSES, BENDS AND ELBOWS. WOOD THRUST BLOCK SHALL BE INSTALLED BENEATH ALL VALVES. THRUST BLOCKS SHALL BE INCIDENTAL TO THE CONSTRUCTION.



TYPICAL INTERSECTION, HANDICAP RAMP DETAILS



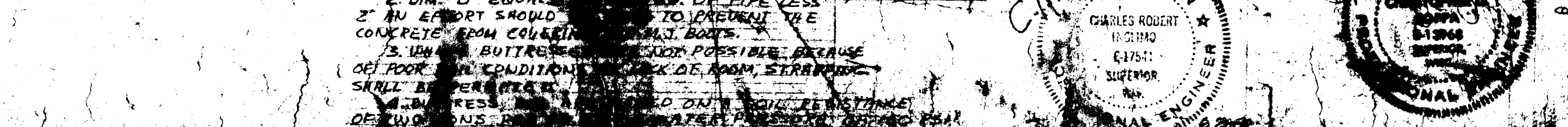
DETAIL OF HERRINGBONE PATTERN



BUTRESS FOR DEAD ENDS

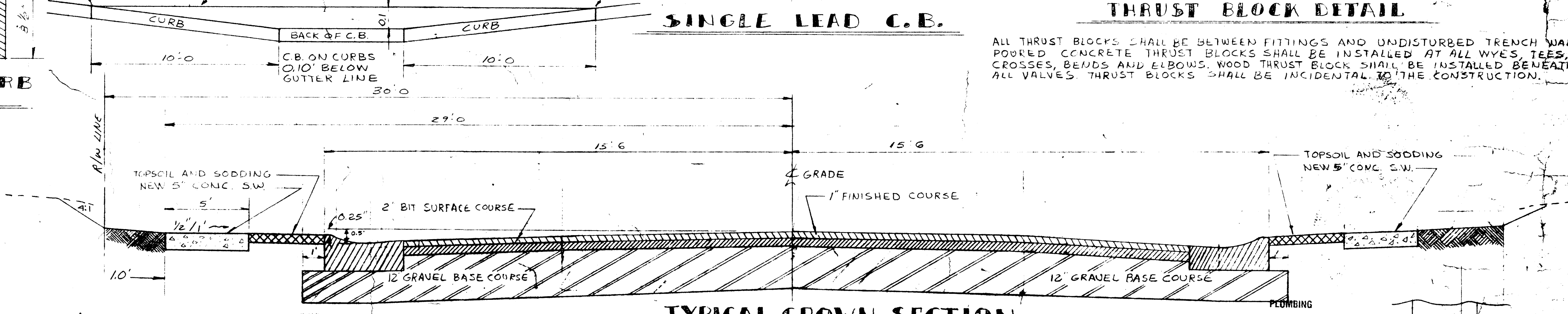
NOTES:
 1) DIMENSION 'C' SHOULD BE LARGE ENOUGH TO MAKE A 2\"/>

TYPICAL ROAD SECTION



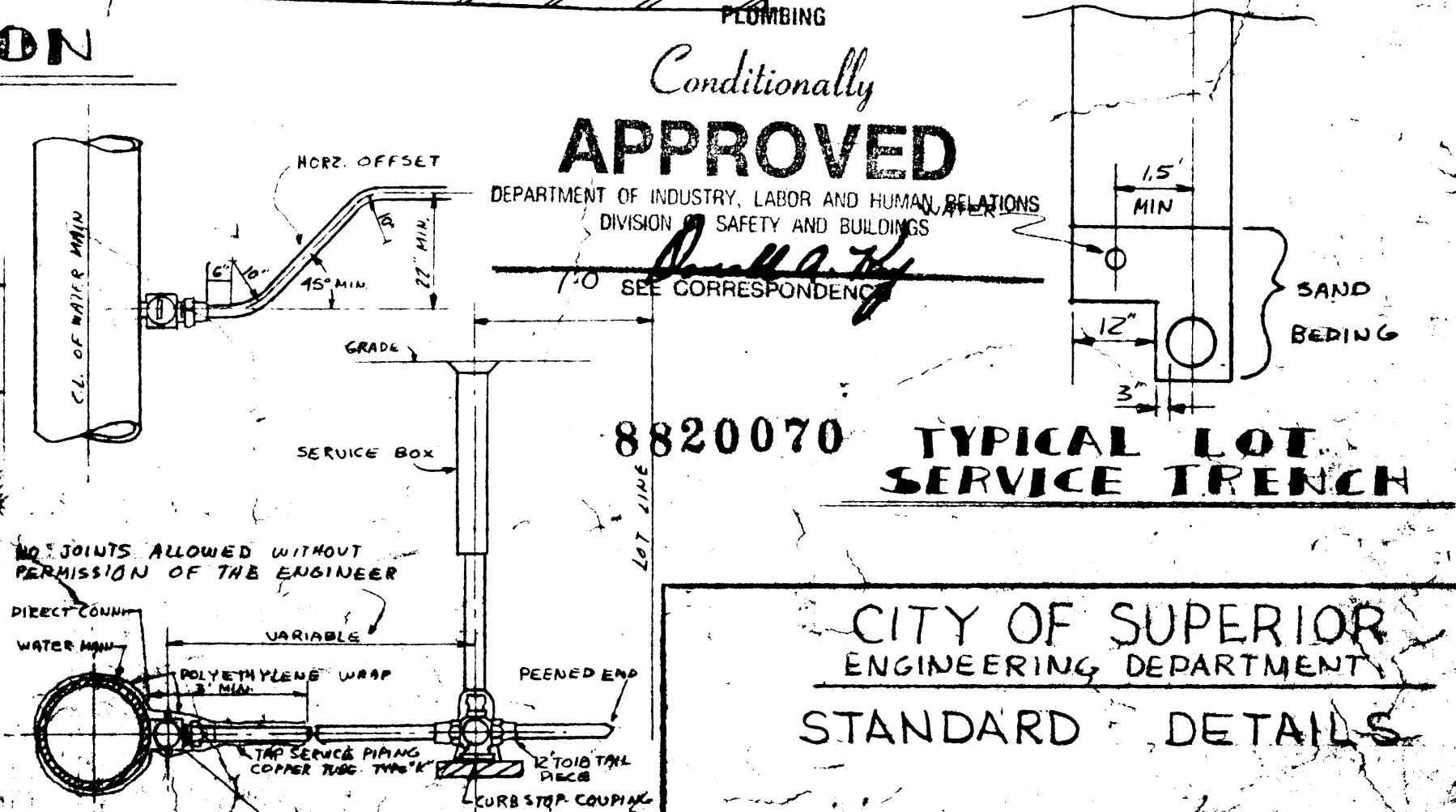
TYPICAL CROWN SECTION

FOR LINDEN, ASPEN, & WILLOW STREETS
NO SCALE



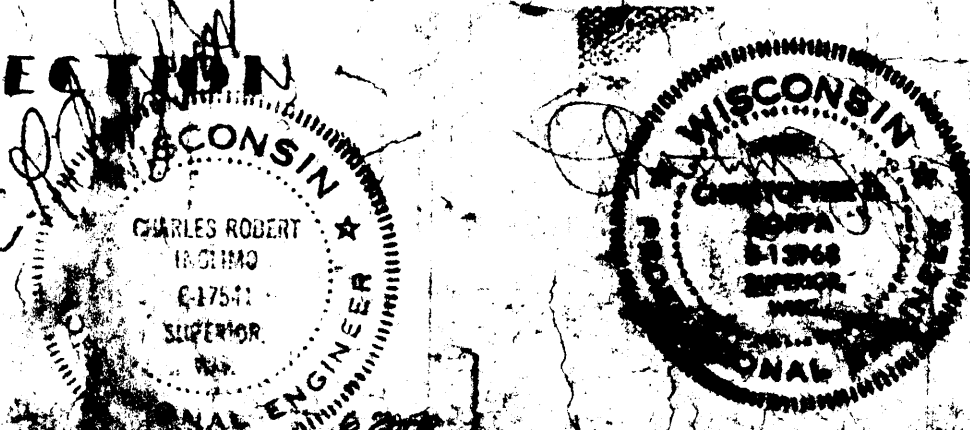
Conditionally APPROVED
 DEPARTMENT OF INDUSTRY, LABOR AND HUMAN RELATIONS
 DIVISION OF SAFETY AND BUILDINGS

8820070
 TYPICAL LOT SERVICE TRENCH



CITY OF SUPERIOR
 ENGINEERING DEPARTMENT
 STANDARD DETAILS

B.C. HAGEN
 C.R. INGLIMO
 DES. CD. ZOPPA
 DRN. DE. SARKO
 DATE 05/10/78
 SCALE NONE



TAP SERVICE PIPING (COPPER)
 SHEET 4 OF 23