

RITCHIE AVE.

HAMMOND

AVE.

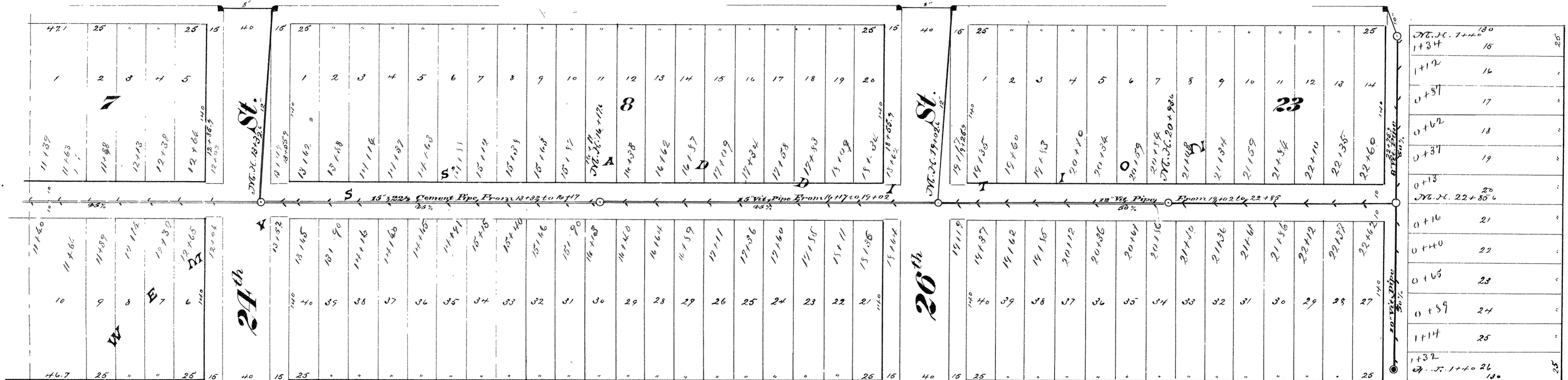


HUGHTITT

AVE.

HAMMOND

AVE.



24th St.

26th St.

28th St.

HUGHTITT

AVE.

Sewers & Established Alley Grades

M.H.	22 <sup>nd</sup> St.		23 <sup>rd</sup> St.		24 <sup>th</sup> St.		26 <sup>th</sup> St.		M.H.	M.H.	E.T.													
	at 0+0	N. Side	S. Side	N. Side	S. Side	N. Side	S. Side	N. Side				S. Side												
	str.	sewer	str.	sewer	str.	sewer	str.	sewer	at 22+83	at 1+40	at 1+40													
									str.	str.	str.													
Alley betw. Hammond & Hughtitt Avenues																								
		31.997		32.914		33.272		34.471		35.083		37.472		37.893		40.435		41.075		42.88		43.53		43.82
Alley North of 24 <sup>th</sup> St.																								

Scale: 1" = 60'

CITY OF SUPERIOR

SEWER PLAN

Contract let April 16, 1891  
 " completed Sept. 14, 1891  
 Joseph Wolf, Contractor  
 T. A. King, Inspector  
 E. B. Banks, City Engineer

3B-9