



City of Superior

Proposal for

Professional Architectural & Engineering Services Superior Fire Stations 2 & 3

October 22, 2024



In partnership with:





**Five Bugles
Design™**

+



**Mitchell Associates
Architects**

Wendel's award winning public safety design team

Table of Contents

COVER LETTER

1. FIRM BACKGROUND AND QUALIFICATIONS

2. KEY PERSONNEL QUALIFICATIONS AND EXPERIENCE

3. RELATED PROJECT EXPERIENCE

4. PROJECT APPROACH, SCOPE OF WORK & SCHEDULE

5. REQUIRED FORMS

- Subconsultants Listing
- Addenda Acknowledgment
- Qualifications Evaluations Checklist
- Reference Form

6. ALTERNATE PROPOSAL - MASTER BUILDER APPROACH

October 22, 2024

City of Superior
Attn: Contract Analyst
1316 North 14th Street, 2nd floor
Superior, WI 54880

SUBJECT: Architecture/Engineering Services Superior Fire Station 2 and 3

Dear Evaluation Team,

Wendel Companies and our exclusive partner, LHB, are uniquely qualified to assist the City of Superior in designing and ultimately constructing another state-of-the-art fire station. Our award-winning public safety design team Five Bugles Design, combined with the locality of LHB, creates a team for the City of Superior that is proven. The team that we are presenting to the City of Superior are some of the same individuals who led the last fire station project for the City of Superior. A project that we feel was an overall success.

Our FBD team is currently finishing up construction documents on over 100 million dollars' worth of public safety construction documents, which is slated to become construction in the spring of 2025. Our schedule fits the City of Superior's needs perfectly, and we feel our team is one of the most experienced emergency services design firms in the United States. Combined with LHB, the two portfolios of each company show a team that is as qualified as any team in the Midwest, with the horsepower to deliver and meet expectations.

Some of the unique and specialized services we offer your team include:

- **Public Safety Specialists:** Wendel recently acquired Mitchell Associates Architects, who work exclusively on public service facilities, including fire stations, EMS, and shared facilities. The merging of Wendel's Five Bugles Design and Mitchell Associates Architects brings two nationally known public safety experts with years of emergency services experience combined into one team. Our combined teams have worked together in the past and feed off each other's strengths and knowledge. We now bring this wealth of experience to the City of Superior and increase our team's ability to provide clients with over 140 years of combined public safety experience. Together, we have a matchless, industry-leading portfolio of award-winning, research-based, innovative facilities. Collectively, the team has completed construction documents on over 150 public safety projects across the United States.
- **LHB:** Our exclusive teaming arrangement with LHB is an asset to the City of Superior. Although our Eau Claire, WI-based Five Bugles Design Team is close, having a local presence on our team with LHB is important. Some of their staff call Superior home and are well-suited to assist the City of Superior and FBD in this project. Having familiarity with the city and knowing how you operate is important, and we are excited to welcome them to our team. As our partner, LHB will provide mechanical, electrical, plumbing, civil, and interior design services, so they are an instrumental part of the team from start to finish.
- **Our unique Immersion Process to reduce project schedule and costs:** This is our hands-on concept development process used at the project's outset that allows us to work collaboratively with the entire project team to rapidly refine and establish the development plan and set the entire project up for success. The following link provides more information about our Immersion process.

<https://wendelcompanies.com/immersion/>



- **Additional resources:** As a national architecture, engineering, energy efficiency, and construction management firm, Wendel offers an array of resources that, while not needed now, may be desirable as the project progresses. These resources include construction management services, which we did not have available the last time we worked with the City of Superior. At the end of this proposal, we have included information about our Master Builder process. The process of the Architect also serving as the construction manager allows for the city to have one contact from start to finish on the project. The fully open book and transparent process has become a favorite of our clients, allowing them to see every dollar spent on their project while maintaining one relationship from the beginning to the end.

We look forward to sharing more details with you, hopefully at the interview stage of the process, on why our team is best suited to complete this project. Please let us know if you have any questions.

Best Regards,
Five Bugles Design

A handwritten signature in black ink, appearing to read "Robt Krzyzanowski".

Robert Krzyzanowski
Director of Emergency Services/Principal-in-Charge
rkrzyzanowski@wendelcompanies.com
Ph: 715-559-0297



Firm Background & Qualifications



CORPORATE PROFILE

In 1940, Leon Wendel started a small civil engineering firm. Over the last eight decades, Wendel has grown into a full-service architecture, engineering, energy efficiency, and construction management firm that delivers customized solutions and turnkey projects in innovative ways.

Today, we boast a full complement of professionals in every engineering discipline, including a robust energy efficiency department; a talented team of architects and landscape architects; construction managers; planners; and interior designers. Our team is based out of 15 offices, is licensed in 38 states, and has over 280 employees dedicated to upholding our four core values: team first; quality; first-class communication; and promises made, promises kept. At the heart of those values is our belief that we can **create a better world through knowledge and leadership.**

Included within Wendel is our award-winning team of emergency services designers, Five Bugles Design (FBD) and Mitchell Associates Architects (MAA). Our emergency services design team has decades of experience working with municipalities across the country. Our clients understand that having all services, including emergency services design, under one roof is the key to a successfully run project. If our team uses sub-consultants for design, we still have all the services listed below for checks and balances, even during construction with our in-house construction management team.

WENDEL SERVICES:



ARCHITECTURE

- Interior Design
- Landscape Architecture
- Master Planning
- Historical Preservation



ENGINEERING

- Civil
- Electrical
- Environmental
- Mechanical
- Municipal
- Structural
- Transportation
- Railroad
- Alternative Fuel Solutions/CNG
- Water/Wastewater Retrofits
- Land Surveying
- Geographic Information Systems (GIG)
- Planning



ENERGY EFFICIENCY

- Energy audits
- Commissioning
- Professionally Assisted Performance Contracting
- Alternative Funding/Grant Programs
- Retrofit and implementation design
- Green building design
- Measurement & Savings Verification (M&V)
- Renewable Technologies



CONSTRUCTION MANAGEMENT

- Master builder
- Progressive Design/Build
- Design/Bid/Build
- Construction Management at Risk (CMaR)
- CM Agent
- GMP Design/Build



Five Bugles Design

+



Mitchell Associates Architects

Wendel's award winning public safety design team

WENDEL TIMELINE



1940: Leon Wendel, Consulting Engineer and Surveyor, opened his practice in Lockport, New York. Provided traditional civil engineering and survey services.



May 31, 2000: After forming a joint venture, the two companies merged, creating Wendel Duchscherer Architects & Engineers. Duchscherer Oberst was an architectural firm with a significant capability in public transportation maintenance facilities and design.



2010: Acquired Smiley, Glotter, Nyberg Architects (SGN), an architectural firm specializing in K-12 school facilities, expanding the firm to a Minneapolis, Minnesota office.



2014: Added an office in Clarksburg, West Virginia.



2015: Added an office in Rochester, New York.



April 1, 2016: Wendel acquired Evolve Architecture, a small firm in Richmond, Virginia expanding Wendel's service offering to include interior design, space programming and planning, and move management services.



2010: Retired Fire Chief Ed Mishefske, Architect Steve Gausman and Project Manager Robert Krzyzanowski formulate Five Bugles Design with the goal of elevating the design of Public Safety Facilities.



2016: Opened an office in Syracuse, New York.



May 1, 2017: Opened an office in Albany, New York.



June 1, 2017: Wendel acquired Architectural Design Group (ADG), a leader in architectural design and planning in Eau Claire, Wisconsin, to enhance our service offering and market reach in the Midwest. Also gained Five Bugles, ADG's division focused solely on the public safety industry.



June 2023: Wendel acquired Mitchell Associates Architects, specialists in Public Safety design, located in the Albany, NY region, to expand our national presence as Public Safety design leaders.



Five Bugles Design

+



Mitchell Associates Architects

Wendel's award winning public safety design team

Firm Contact

Robert Krzyzanowski
P: (715) 559-0297
E: rkrzyzanowski@wendelcompanies.com

Name & Location

Five Bugles Design + Mitchell Associates
Architects Wendel's award winning
public safety team
204 E. Grand Avenue, Suite 200
Eau Claire, WI 54701
fivebuglesdesign.com

Year Established

Wendel: Established in 1940
June 1, 2017: Wendel acquired
Architectural Design Group (ADG),
a leader in architectural design and
planning in Eau Claire, Wisconsin to
enhance our service offering and market
reach in the Midwest. Also gained Five
Bugles, ADG's division focused solely on
the public safety industry.

Legal Status

Licensed to perform Architecture &
Engineering services in Wisconsin

Firm Ownership

Corporation

Staffing

Total Staff: 290
Eau Claire: 17

Primary Firm Location for this Project:

204 E. Grand Avenue, Suite 200
Eau Claire, WI 54701

BUILDING ON A VISION

Five Bugles Design was formed to provide planning and design services to the public safety service industry. We understand that public safety buildings are truly a unique building type. Our focused design team is comprised of members whom, both collectively and individually, are among the most experienced public safety design professionals in the Industry.

UNMATCHED PUBLIC SAFETY FACILITY DESIGN EXPERIENCE

Our award-winning team of architects and active emergency services specialists have experience throughout the country. We focus on exceeding our clients' expectations and providing exemplary project management services, all while "speaking your language."

COLLABORATIVE. FOCUSED. CLIENT DRIVEN. COMMUNITY CONSCIOUS.

Making a positive and lasting impact on the people and communities we serve is at the core of what we do. We believe that by getting to know our clients, their needs, and the communities they serve, we're able to collaborate as a design team to provide winning solutions that go far beyond the obvious. Our goal is that the facilities we design today will serve our clients for decades to come.

EMERGENCY SERVICE DESIGNERS

The architects, engineers and designers that are part of our Five Bugles Design team have experience leading municipalities through the process of design. These individuals learn from every project they have been apart of, with some having decades of experience. Our team then takes what we have learned, good or bad, and puts that information forward to our new clients.

The design of emergency services facilities is an intricate process and very detail oriented. Our clients have to be detail oriented in their everyday job of saving lives, we expect our team to understand that the small details matter in a facility as every second counts.

We pride ourselves on function over frills, however we have the diversity in our portfolio to satisfy any client's needs and desires. **Emergency services design is the only thing that the Five Bugles Design team focuses on and they have dedicated their careers to this cause.**

IN-HOUSE EMERGENCY SERVICE SPECIALISTS

The Five Bugles Design team includes a number of Emergency Service Specialists. These individuals are both active and retired public safety personnel with extensive background in the management and operations of fire and police departments of all types and sizes (career, paid-on-call, combination).

Most importantly, they have built stations for their own departments and understand the challenges created by the necessity of blending facility demands with budgetary concerns.

Our Emergency Service Specialists use their decades of experience to lead our unique programming process. They will direct a conversation that explores your individual operational and facility challenges, breaks those challenges down into their respective building components and then work with our experienced architects and planners to define and quantify those elements with the goal of creating an accurate depiction of the built environment that will ultimately become your new facility.

Our Emergency Services Specialists also work for the State as advisors, fire inspectors, and educators. These items allow our team to see how operations are working throughout the state, what new technologies are coming out, and pros/cons on how technology is impacting Public Safety.

MITCHELL ASSOCIATES ARCHITECTS

In 2023, Wendel, home of the award-winning Five Bugles Design, also acquired Mitchell Associates Architects, specialists in Public Safety design, to expand our national presence as Public Safety design leaders.

Mitchell Associates Architects works exclusively on public service facilities – fire stations, EMS, and shared facilities. With over 20 years of experience, they have produced award-winning fire station designs and more than 190 projects addressing over 330 public safety facilities throughout the Northeast, Eastern Seaboard, Missouri, Texas, and Alaska. With expertise in renovation and new construction, their comprehensive services range from feasibility studies, site selection, building design, public approval, and full project management through construction.

This expansion increases our team’s ability to provide clients with public safety projects. Together, Wendel’s Five Bugles Design and Mitchell have a matchless, industry-leading portfolio of award-winning, research-based, innovative facilities. Collectively, the two companies have completed over 330 public safety projects across the United States.

Joining forces to become a single team provides the ability to leverage all of our talents and expand our capabilities while continuing to produce quality work.



LHB is a multi-disciplinary engineering, architecture, and planning firm known for our design leadership and loyalty to our clients. We go beyond good intentions and focus on measurable performance. We are specialists in: public works, pipeline, industrial, housing, healthcare, government, education, and commercial design.

LHB is dedicated to being environmentally responsible, reducing long term operating costs, and improving the quality of life for our clients. With a staff nearly 230, we provide integrated design solutions. Since 1966, our people have focused their talents and specialize in providing creative, practical and cost-effective design solutions for our clients.

We create sustainable designs for all types of facilities and infrastructure to produce energy-efficient buildings; promote ecological use of materials; and utilize natural systems that provide healthy, cost-effective benefits from natural lighting to stormwater reuse.

Services Provided

- Architecture
- Civil Engineering
- Climate Action Planning & Research
- Community Facilitation and Engagement
- Electrical Engineering
- Environmental Engineering
- Governmental Coordination
- Historic Preservation
- Interior Design
- Landscape Architecture
- Mechanical Engineering
- Planning & Urban Design
- Site Analysis and Selection
- Structural Engineering
- Survey

Recognition

- AIA Minnesota 2021 Firm Award Winner
- Top 500 Design Firms, ENR (Engineering News Record) Magazine
- Top 300 Architecture Firms, Architectural Record
- Hot Firm Winner, Zweig Group
- Star Tribune Top Workplace



Locations

63 E Second Street, Suite 150 Superior, WI 54880 715.392.2902	701 Washington Avenue N, Suite 200 Minneapolis, MN 55401 612.338.2029
21 W Superior Street, Suite 500 Duluth, MN 55802 218.727.8446, 218.729.2507 Fax	324 Garfield Street S Cambridge, MN 55008 763.219.1235



LHB is a privately-held, employee-owned, large business. Licensed to work in multiple states, we hold open-ended contracts with local, state, and federal agencies.

LHB Staff by Discipline

A/E Design Technicians.....	32
Administrative/Management Staff	41
Architectural Intern.....	1
Certified Interior Designers.....	4
Civil Designers	5
Designers	9
Electrical Designers.....	8
GIS Analyst.....	2
Interior Designers.....	1
Licensed Architects	40
Licensed Civil Engineers.....	29
Licensed Electrical Engineers	7
Licensed Land Surveyors.....	2
Licensed Landscape Architects.....	7
Licensed Mechanical Engineers.....	10
Licensed Structural Engineers.....	5
Mechanical Designers	8
Regulatory Compliance Specialist.....	1
Research Intern.....	1
Safety Specialist	1
Structural Designers	2
Survey Crew Chiefs.....	9
Survey Technician.....	3
Grand Total	228



Five Bugles DesignTM

+



Mitchell Associates Architects

Wendel's award winning public safety design team

PROGRAMMING: UNIQUE IMMERSION PROGRAMMING & PLANNING

SPACE NEEDS ANALYSIS

Our team has developed some of the most comprehensive programming tools in the industry. We view programming as the fundamental basis of our design and attribute much of our successes to our in-depth process.

Our process typically begins by conducting a programming session – typically a two-hour meeting – which would provide us an excellent understanding of your department's operational requirements and future goals.

With the City of Superior already completing the programming in the previous feasibility study, our intent would be to reevaluate the findings of that study to refresh the entire team and to bring that exercise back up to par since it occurred.

PREVIOUS STUDY ANALYSIS

Due to our vast experience in the design of emergency services facilities, our team knows what it takes to put your staff into a facility that functions both efficiently and is budget friendly.

Below is a list of facilities that we have completed that compares the "Programmed Square Footage" with the square footage the building ended up at after construction. This shows that bringing an expert onto the project team in this particular building type will ensure a tight, efficient and cost friendly building.

Suamico Fire Station

Programmed S.F. = 36,846 S.F.
Completed S.F. = 22,050 S.F.

Monroe Fire Station

Programmed S.F. = 24,388 S.F.
Completed S.F. = 20,100 S.F.

Riverside Fire Station

Programmed S.F. = 21,504 S.F.
Completed S.F. = 17,450 S.F.

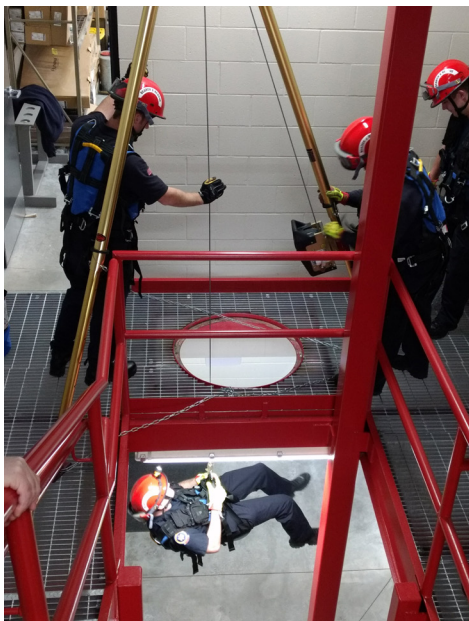
Greenville Fire Station

Programmed S.F. = 30,000 S.F.
Completed S.F. = 24,680 S.F.

Wausau Fire Station

Programmed S.F. = 16,884 S.F.
Completed S.F. = 15,233 S.F.





TRAINING

Our team has extensive experience in regional training facilities as well as creating staff training opportunities within a public safety facility.

At the core of any successful and efficient emergency services protection program is public safety facility training. Community expectations for delivery services over the last decade have grown to a level never anticipated. Emergency medical services, hazardous materials, confined entry rescue, fire ground management techniques, communications, domestic terrorism and international terrorism are not hypothetical scenarios, but realities. Designing these high-risk but low-frequency training opportunities into the new fire station is critical to a department's level of ability to face the new challenges these situations present.

Our teams are national leaders with our innovative approach of incorporating training programs into building design. In our discussions during the initial programming and space orientation phase of the building process, we spend a great deal of time talking about the department's existing training program. We take this time to gather as much information as possible and then offer design solutions that include in-house training space. Firefighters will be on hand during training sessions if a major emergency occurs.



One of the training opportunities that we have included in numerous facilities is the use of a training tower for both drying fire hoses and for practicing in a multistory internal/external training platform.

Master planning of emergency services facilities involves taking the entire scope of the project into account, not just the building. Our team has worked with all of our clients to design training needs into their overall site plan, whether that includes live burn towers, extrication training needs, confined space training, simulated shoot houses, etc. Each project comes with a need and/or idea for training and our team has acted on integrating those ideas into an eventual design.



Not only are we designers, but our firm specializes in the construction of municipal facilities. This ensures our cost estimating is spot on when or if this project moves forward. We consider ourselves a design professional who is proficient in leading the craft of building construction and the art of architecture and engineering. We offer the service of being your trusted advisor during design and construction, of which we call our Master Builder Approach. We talk more about this in our Alternate Services Approach at the end of this proposal





Five Bugles Design™

+



Mitchell Associates Architects

Wendel's award winning public safety design team

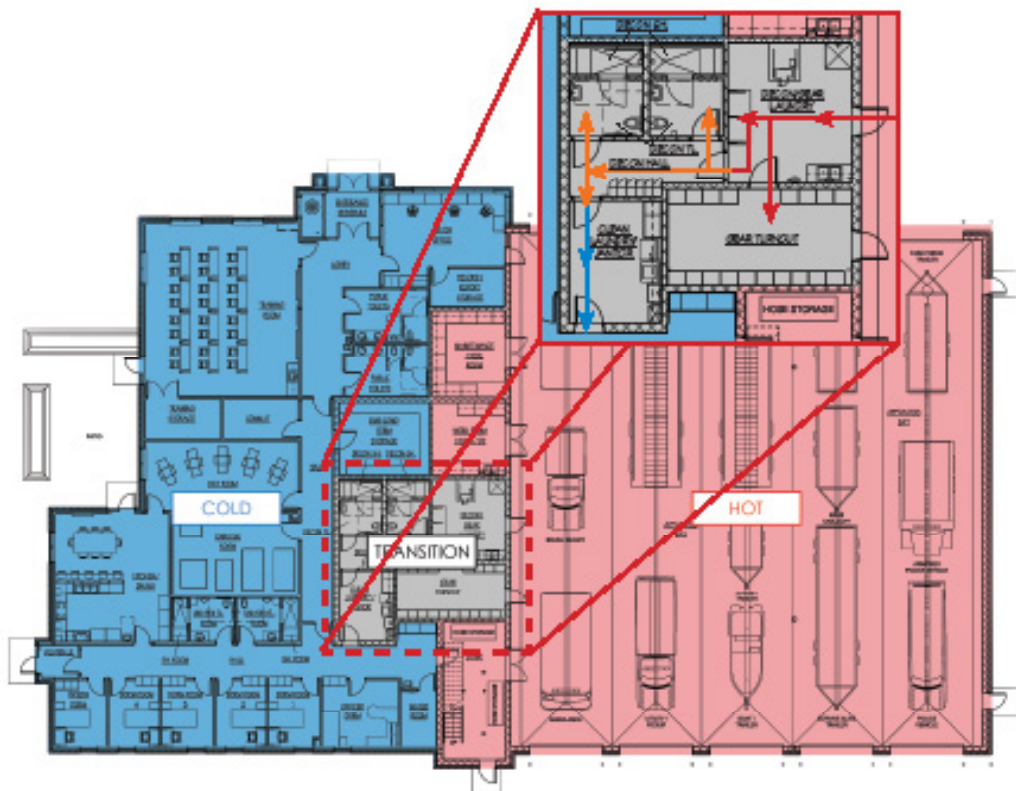
PERSONNEL DECONTAMINATION: EMERGING TRENDS

Over the past decade, there has been an increase of cancer diagnoses for those men and women in the fire services, as well as for their loved ones at home. In an attempt to help keep firefighters and their families healthy, we have created a personnel decontamination process which separates the fire station in to zones (hot and cold), and therefore helps to reduce the spread of cancer-causing contaminants.

By constantly pushing the limits and creating (not just following) the emerging trends, we are regularly given the opportunity to speak to our peers and emergency services professionals at conferences throughout the country, as well as published articles in national publications showcasing our unique and user focused decontamination processes.

This process includes decontaminating trucks, gear, and of course, the people. Restricting contaminants to the hot zones and having staff transition to the cold zones ensures that they are free of those contaminants after responding to an emergency.

Our award-winning team members have proven their expertise in the design and development of decontamination spaces.



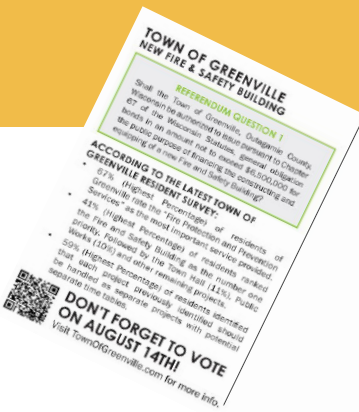


PUBLIC ENGAGEMENT

Public Engagement is critical to our philosophy of gaining project support from project participation. Successful public campaigns are the result of effective planning, transparent communication of a value-based solution, and support at the local level by municipal staff and officials.

- Public hearings and neighborhood groups provide opportunities for interactive progress updates with concerned citizens.
- The local press presents an opportunity to present the project in a positive light at chosen times throughout the project.
- Web-based project sites are available to provide meeting notes and project updates.

- Every community is different and presents a different set of challenges to the communications of project information and project approval processes. We will work with your team to develop a combination of the elements that works best.
- Assistance with social media postings.
- Referendum Assistance.
- Graphics for monthly news letters and websites.
- Produce mailers, postcards, and newsletters to be mailed to public.
- Create fliers to be posted around community.



TOWN OF GREENVILLE, WI

NEW FIRE & SAFETY BUILDING

AUGUST 14, 2018

WHY NOW AND WHY DO THESE NEEDS EXIST?

The needs and the challenges facing the Greenville Fire and Safety department and our community are not unique. The emergency vehicles have increased in size and complexity since the current fire station was built. The requirements and public expectations placed on our volunteer and full-time fire and safety personnel has increased dramatically over that same time period. The number of calls for service has increased and the environment in which we expect our emergency responders to work in has become increasingly more dangerous. The incidence and risk of several types of cancers is significantly higher for emergency personnel who we rely upon to preserve both life and property of those who live, work, or visit our community. The needs of this department has been well documented in studies dating back to 2010. The current Fire and Safety station no longer meets the needs of the department or our community and a new fire station will significantly add to the safety of those who serve.

The 2015 referendum included two other projects (Town Hall and Public Works) for a total of \$0.5 million. The current referendum being considered specifically addresses the needs of the Fire and Safety department independently for an estimated cost of 6.5 million. The cost to construct a new modern fire station has been reduced with this new design and will overcome current and future challenges of the department and community for well over the next 50 years. The costs to construct a new fire station will increase by 3 to 5 percent annually until it is built. The majority of residents surveyed support the need for key aspects of this specific project.

ESTIMATED TAX IMPACT

REFERENDUM AMOUNT	\$6,500,000
ESTIMATED AVG MILL RATE OVER 20 YEARS	\$25/\$3,000 of Assessed Value
TAX IMPACT ON PROPERTY WITH FAIR MARKET VALUE OF:	
\$100,000 Property	
Annual Impact	\$25.00
Monthly Impact	\$2.09
\$150,000 Property	
Annual Impact	\$37.50
Monthly Impact	\$3.13
\$200,000 Property	
Annual Impact	\$50.00
Monthly Impact	\$4.17
\$300,000 Property	
Annual Impact	\$75.00
Monthly Impact	\$6.25

Note: Planning estimates only. Significant changes in market conditions will require adjustments to current financing plan. Rates subject to change.

WHY NOW AND WHY DO THESE NEEDS EXIST?

The needs and the challenges facing the Greenville Fire and Safety department and our community are not unique. The emergency vehicles have increased in size and complexity since the current fire station was built. The requirements and public expectations placed on our volunteer and full-time fire and safety personnel has increased dramatically over that same time period. The number of calls for service has increased and the environment in which we expect our emergency responders to work in has become increasingly more dangerous. The incidence and risk of several types of cancers is significantly higher for emergency personnel who we rely upon to preserve both life and property of those who live, work, or visit our community. The needs of this department has been well documented in studies dating back to 2010. The current Fire and Safety station no longer meets the needs of the department or our community and a new fire station will significantly add to the safety of those who serve.

The 2015 referendum included two other projects (Town Hall and Public Works) for a total of \$0.5 million. The current referendum being considered specifically addresses the needs of the Fire and Safety department independently for an estimated cost of 6.5 million. The cost to construct a new modern fire station has been reduced with this new design and will overcome current and future challenges of the department and community for well over the next 50 years. The costs to construct a new fire station will increase by 3 to 5 percent annually until it is built. The majority of residents surveyed support the need for key aspects of this specific project.



Visit TownOfGreenville.com for more info.

The Greenville Facilities Committee
 Jack Peters, Dean Culbertson, Grog Hippenharr, Amy Vostors, Dan Dibos, Brad Berger, Larry Bontie, Tim Lambie, Eric Kitowski

TOWN OF GREENVILLE, WI

NEW FIRE & SAFETY BUILDING

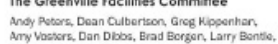
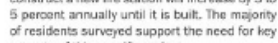
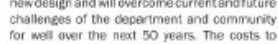
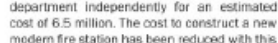
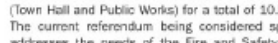
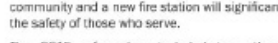
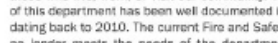
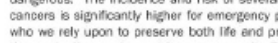
VOTE

AUGUST 14, 2018

CONTACT US

The Greenville Facilities Committee
 Andy Peters, Dean Culbertson, Grog Hippenharr, Amy Vostors, Dan Dibos, Brad Berger, Larry Bontie, Tim Lambie, Eric Kitowski

Questions, comments or concerns can be directed to:
 Town Administrator - Joel Gregozeski
 (920) 757-5151 or joelg@townofgreenville.com
 Visit TownOfGreenville.com for more information.





PUBLIC SAFETY BUILDING

LEED PROJECTS:

Buffalo, MN
Marshfield, WI
Menomonie, WI
Chisholm, MN.

OTHER LEED PROJECTS WITHIN

OUR FIRM:

Village of Westfield, NY
City of Beacon, NY
Village of Fredonia, NY
Syracuse, NY
Village of Horseheads, NY
City of Phoenix, AZ
Lynchburg, VA
Savannah, GA
Niagara Falls, NY
Blacksburg, VA
Rapids, MI
Lorton, VA
Binghamton, NY
Bridgeport, CT

SUSTAINABLE DESIGN

Standard design features include:

- Natural Light
- In-Floor Heat
- Building Envelope Exceeds Building Code Requirements
- Other exciting technologies:
Photovoltaics, Solar Walls, Water Reclamation Systems, Green Roofs, White Roofs, Geothermal, Wind Power, Purchasing Renewable Energy Credits from Local Energy Co-Ops, Etc.

INDUSTRY LEADERSHIP & ENVIRONMENTAL STEWARDSHIP

As a design and construction firm, we recognize that our projects can have a significant impact on the environment and we are passionate about advancing opportunities that raise the bar on sustainability. This carries through into how we operate as a company, how we pursue our work, and how we interface with the world in our daily lives. Wendel's sustainability legacy will be how we respected the environment and our community.

Our Sustainability Charter identifies both short- and long-term sustainability goals, and establishes metrics to evaluate our successes, identify areas for improvement, and creates a roadmap for greater engagement in initiatives across departments and offices.

As part of the Wendel Strategic 2020 Plan, a "Stewards of the Environment" leadership group was created to help drive the "practice-what-we-preach" element into a larger energetic group. Wendel has set six goals to help prioritize sustainability efforts for increasing energy efficiency, increasing staff awareness, increasing engagement with the community, and creating a platform to track and document efforts. Progress will be evaluated annually in conjunction with implementation milestones. The Stewards team provides on-the-ground support to implement the initiatives, collect data, and lead communication and reporting efforts.



CITY OF BEACON FIRE DEPARTMENT



ITHACA FIRE DEPARTMENT

"Our design teams have recently completed the design and have begun construction on a No-Fossil Fuels emergency services facilities in Beacon, NY and Ithaca, NY. Wendel strives to protect the environments in which we live, work and play."



+



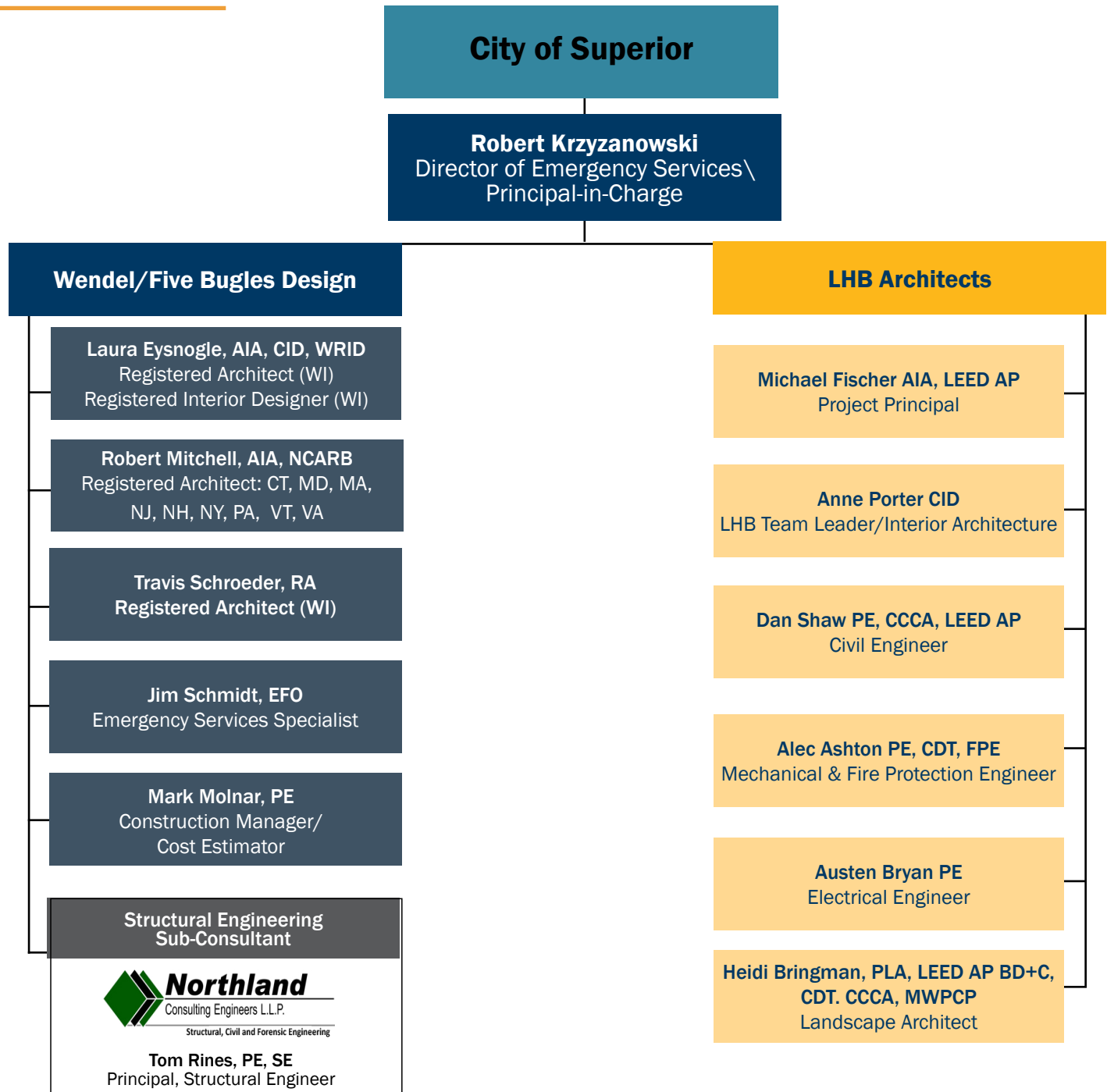
Wendel's award winning public safety design team

Key Personnel Qualifications & Experience

TEAM OVERVIEW

FBD/MMA and LHB have experience working together on similar public safety buildings projects. On the following pages we have included the resumes of our team members that will serve you on this project. We pride ourselves in the quality of service and the level of attention we provide to each of our clients. These team members were selected based on a balance of talent, experience, and their availability to provide the City of Superior the best experience possible. As mentioned earlier, our team has just completed over 100 million dollars' worth of construction documents and your project fits perfectly within our schedule.

ORGANIZATIONAL CHART





Robert Krzyzanowski



Director of Emergency Services/Principal in Charge

As the Director of Emergency Services for Wendel, home of the award-winning Five Bugles Design, Robert oversees all emergency services projects throughout the Country for all Wendel offices. He has over 20 years of experience working on public projects, and has been involved in over 60 emergency services projects in the past four years, and close to 100 during his career.

Robbie will oversee the clients' expectations from ground breaking to the ribbon cutting and will ensure the client experience exceeds their overall needs. He understands that the team's next project relies on the current projects overall success and takes pride in pushing the project to its overall final environment as a facility where seconds count.

Robbie's experience includes a variety of emergency service buildings of various sizes from a 2,880-square-foot addition to the Lafayette Fire Station in Chippewa Falls, Wisconsin, to the 43,000-square-foot fire station in Verona, Wisconsin. This vast array of experience allows him to assist owners in constructing buildings that meet their specific space needs, functionality and building type requirements.

Project Experience

Fire/EMS Design Experience

- Ashland, Wisconsin
- Bellevue, Wisconsin
- Bloomington, Illinois
- Bloomington, Minnesota
- Chippewa Falls, Wisconsin
- Chisago City, Minnesota
- Chisholm, Minnesota
- Cloquet, Minnesota
- Cold Springs, Minnesota
- Eau Claire, Wisconsin
- Elkhart Lake, Wisconsin
- Farmington, New York
- Fitchburg, Wisconsin
- Greenville, WI Fire Department
- Inver Grove Heights Fire Department
- Janesville, Wisconsin
- Jefferson, Wisconsin
- Kenosha, Wisconsin
- La Crosse, Wisconsin
- Ladysmith, Wisconsin
- Lehi, Utah
- Lewiston, Minnesota
- Marathon City, Wisconsin
- Marshfield, Wisconsin
- Middleton, Wisconsin
- Milton, Wisconsin
- Monroe, Ohio
- Mount Horeb, Wisconsin
- Normal, Illinois
- Red Wing, Minnesota
- Rib Mountain, Wisconsin
- River Falls, Wisconsin
- Stewartville, Minnesota
- Stoughton, Wisconsin
- Suamico, Wisconsin
- Superior, Wisconsin
- Verona, Wisconsin
- Wausau, Wisconsin

Associate Principal

Education

Associate Degree, Drafting and Design Technology, Winona Technical College
Winona, Minnesota (1998)

Continuing Education

Project Management Bootcamp
PSMJ Resources, Inc.
Presented by Alan Bollinger
St. Paul, Minnesota

LEED for New Construction
Como Park Zoo and Conservatory
Saint Paul, Minnesota

Awards

Chippewa Falls Fire Station
2018 Firehouse Station Design Award

Eau Claire Fire Station
2018 Firehouse Station Design Award

2017 Station Design Judge
Firehouse Magazine
Station Design Awards

Verona Fire and EMS
2016 Firehouse Station Design
Shared Facilities Notable

Years of Experience
24 years



Laura Eysnogle, AIA, CID, WRID



Architect/Interior Designer

Laura joined the Wendel team with 15 years of experience in public sector interior design, space planning, and architectural design. She works with clients from project conception through the ribbon cutting phases balancing the importance of efficiency and durability with adaptability and aesthetics. With a background in all community and public sector projects, Laura understands the need for spaces to perform in their most efficient manner and to be a good steward of the tax payer's dollar yet still provide the community with a facility that they can be proud of. Laura feels that the most rewarding part of her job is listening to clients, working to successful solutions, and finally watching as the community embraces their new facility. Laura's experience includes a variety of projects from a new 14,000 sf Laramie #3 Fire Station to a 65,300 sf renovation / 67,650 sf addition to a high school to strategic planning for the 1.6 million assignable square feet for a major research university. Her experience in new construction, renovations and strategic planning has allowed her the opportunity to consider projects from every aspect. What was the project yesterday, what is it today, and what will it be tomorrow.

Licenses & Certifications

Registered Architect, WI
Registered Interior Designer, WI
Certified Interior Designer

Education

University of Wisconsin-Stout,
Bachelor of Fine Arts: Interior Design

Affiliations

Eau Claire Chamber of Commerce -
Leadership Eau Claire, Class of 2019

Girls on the Run Assistant Coach,
Spring 2019

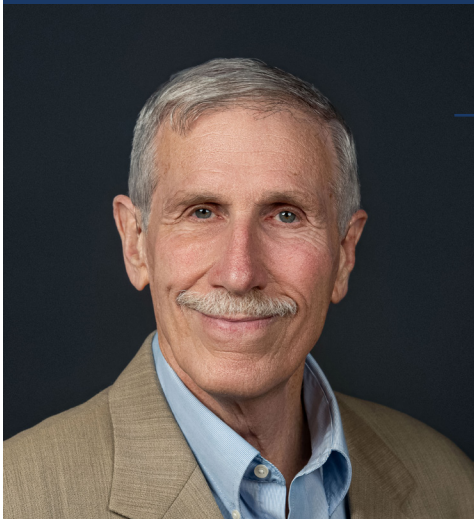
Active member of the Young
Professionals of the Chippewa Valley

Years of Experience

18 years

Project Experience

Cold Spring Public Safety Building, Cold Spring, MN
Town of La Pointe Emergency Services Building, WI
Monroe Township Fire Station, OH
Suamico Fire Station, WI
Chisholm Emergency Services Building, MN
La Crosse Fire Department, WI
Wisconsin Rapids Fire Department, WI
City of Laramie, Fire Station #3 (New Building), Laramie, WY
City of Cheyenne, Board of Public Utilities New Office Building, Cheyenne, WY
City of Eau Claire, South Entry Replacement, Eau Claire, WI
City of Laramie, Fire Station #3, New Building, Laramie, WY
City of Cheyenne, Board of Public Utilities New Office Building, Cheyenne, WY
Lake Dillon Fire & Rescue, New Public Works Facility, New Fire Station Study & Conceptual Design, Lake Dillon, CO
Cottage Police Public Works & Parks & Recreation Facility Remodeling, Furniture Selection & Procurement Assistance, Cottage Grove, WI
City of Eau Claire, South Entry Replacement, Eau Claire, WI
Plate Valley Fire Protection District, New Fire Station Study & Conceptual Design, Kersey, CO
School District of Ashland, High School Addition & Remodeling, Middle School Addition & Remodeling, Furniture Selection & Procurement Assistance, Ashland, WI
School District of Bloomer, Referendum Assistance, Middle School Addition & Remodeling, Bloomer, WI
School District of Cashton, Middle/High School Addition & Remodeling, Elementary School Addition & Remodeling, Furniture Selection & Procurement Assistance, Cashton, WI



Robert Mitchell, AIA, NCARB

Emergency Services Designer/Market Leader

Bob's work is focused exclusively on emergency services facilities. This focus is supported by a depth of experience gained in over 28 years in design, construction, evaluation, and renovation of fire stations, with over 189 projects involving more than 326 emergency services facilities throughout the northeast, eastern seaboard, Missouri, and Alaska. He has provided programming for more than 170 fire station and emergency services facilities and has completed more than 60 feasibility studies to evaluate the option of renovating/designing additional space versus building new. Bob presents at national conferences and is author of the chapter on fire station renovation and additions for the Fire Station Design Handbook published by the International Association of Fire Chiefs Foundation. His work is featured in FEMA's fire station design manual.

Licenses

Registered Architect: NCARB,
Connecticut, MD, MA, NJ, NH,
NY, PA, VT, VA

Education

Bachelor of Science in Building
Science,
Rensselaer Polytechnic
Institute, 1968

Expertise

Firematic Design
Project Management
Cost Estimating
Public Support
Energy-Efficient Building
Design

Affiliations

American Institute of
Architects, International
Association of Fire
Chiefs, NFPA, NYSAFC

Years of Experience

30 Architecture
40+ Building, Solar &
Energy Expertise

Project Experience

- | | |
|-----------------------------------|--|
| Beacon (NY) Fire Depart/City Hall | Long Hill (CT) Fire District |
| Beukendaal (NY) Fire District | Midway (NY) Fire District |
| Carver (MA) Fire Department | Newburgh (NY) Master Plan Study |
| Cortland (NY) Fire Department | N. Castle Fire (NY) District #2 Armonk |
| East Putnam (CT) Fire Department | Peekskill (NY) Fire Department |
| King of Prussia (PA) | Philadelphia (PA) Fire Department |
| Lancaster (PA) Fire Department | |

Awards And Recognition (Since 2003)

- 2021 Firehouse Station Design Award Notable Design, Purchase, NY Fire Station
- 2020 Firehouse Station Design Award Notable Design, Long Hill, CT Fire Station
- 2019 Firehouse Station Design Award Gold, Peekskill NY Fire Headquarters
- 2018 Firehouse Station Design Notable Design Award, Schoharie, NY Fire Station
- 2018 Firehouse Station Design Notable Design Award, South River, NJ Fire
- 2017 Firehouse Station Design Gold Award. Town of Carver, MA Fire HQ (3)
- 2016 Firehouse Station Design Bronze Award, Town of Glenville, NY Fire Station
- 2015 Firehouse Station Design Notable Design Award, East Putnam, CT
- 2014 Station Design Recognition Award, F.I.E.R.O., Valley Forge, PA Fire Station
- 2013 Firehouse Station Design Notable Design Award, Slingerlands, NY
- 2012 Station Style Notable Design Award, Fire Chief Magazine; Rensselaer, NY
- 2011 Station Style Bronze Award, Fire Chief Mag: Holden, MA Safety Facility (3)
- 2010 Station Style Notable Design Award, Fire Chief Mag: Briarcliff Manor, NY
- 2009 Station Style Notable Design Award, Fire Chief Magazine; Philipstown, NY
- 2008 Station Style Notable Design Award, Fire Chief Mag; Skaneateles, NY (1)
- 2007 Station Style Notable Design Award, Fire Chief Mag; Chestertown, NY (2)
- 2006 Station Style Gold Award, Fire Chief Magazine; Hudson, NY Fire Station (2)
- 2005 Station Style Gold Award, Fire Chief Magazine; Armonk, NY Fire Station (2)
- 2004 Station Style Notable Design Award, Fire Chief Magazine; Herman, PA
- 2003 Station Style Gold Award, Fire Chief Magazine; Cayuga Heights, NY (2)



Travis J. Schroeder, RA

Project Leader

Travis is a registered Architect in the State of Wisconsin and serves as a project leader for our Midwest Team. His experience in multiple building types is an asset and he utilizes that experience in the coordination of the design team, pulling together the construction documents. Travis then specializes in the construction administration process, working with the contractor through RFI's, submittals and ultimately the closeout process.

Project Experience

Baraboo Area Fire & EMS District, Station 1, Baraboo, WI

Baraboo Area Fire & EMS District, Station 2, Baraboo, WI

Chisholm Public Safety Building, Chisholm, MN

Knoxville Public Safety Building, Knoxville, IA

Grand Haven Township Fire Rescue, Grand Haven, MI

Platteville Fire Station, Platteville, WI

Licenses & Certifications
Registered Architect, WI

Education
BS, Architectural Studies, University of
Wisconsin- Milwaukee

Years of Experience
17 years



James Schmidt



Emergency Services Specialist

James Schmidt's career began in 1979 as a Fox Valley Technical College (FVTC) cadet firefighter at the Town of Grand Chute and Oshkosh Fire Departments. In 1982, Jim was hired by the City of Marshfield Fire and Rescue Department as a Firefighter/Emergency Medical Technician. He worked his way up the ranks and as a Deputy Fire Chief responsible for a number of programs and duties including emergency response and management of career Fire/EMS personnel, coordination of the Fire Investigation Program, Special Operations Training/Response (Hazardous Materials, Elevated Rescue, Confined Space Rescue, Trench Rescue), and the development of a Regional Training Center.

Licenses & Certifications

Executive Fire Officer
Emergency Medical Technician
Wisconsin State Fire Inspector
Hazardous Material Response Technician
Wisconsin Fire Service Instructor I

Education

Associate Degree
Fire Science Technology
Fox Valley Technical College
Appleton, WI

Business Administration
Lakeland College
Plymouth, WI

Executive Fire Officer (EFO)
Program Graduate
Emmitsburg, MD

Professional Associations (Past and Present)

International Association of Fire Chiefs
National Fire Protection Association
Wisconsin State Fire Chiefs Association
North Central Fire Chiefs Association
International Association of Arson
Investigators
Wisconsin Association of
Hazardous Materials Responders
Wisconsin Emergency
Medical Technician Association
Wisconsin Technical College System
Fire Service Advisory Board on
Education and Training - Co-Chair

Years of Experience
45 years

In 2007, Jim was promoted to Fire Chief and is most proud of the relatively small part he played in changing the culture of the department. In addition, under Jim's direction, the department was able to add staff and build Wisconsin's first Gold LEED Central Fire Station in Marshfield. Shortly after completing the National Fire Academy's Executive Fire Officer (EFO) program, Jim was able to continue moving the department forward by reducing the city's Insurance Services Office (ISO) rating and embracing many state and federal grant opportunities to help off-set the costs of new Personal Protective Equipment (PPE), a Medium Duty Rescue Truck, Selfcontained Breathing Apparatus (SCBA's), and SCBA Air Compressor.

In 2013, Jim retired as the Fire Chief of the City of Marshfield but has remained active in the fire service. Jim joined the Town of Rock Volunteer Fire Department as a Safety Officer/First Responder and authored the department's Standard Operating Guidelines, became a State Representative for the Wisconsin Technical College Fire Service Training section, accepted an interim Fire Chief position with the Rothschild (Combination) Fire Department (2015), Interim Fire Chief with the Town of Rome (Volunteer) Fire Department (2016). In addition, Jim started a consultant business specializing in assisting communities in the fire chief hiring process, mentoring new fire chiefs and

Project Experience

Wausau, WI – Fire Station Design, Police Station Remodel
Chisholm, MN – Fire Station Design, City Hall Design, Joint Training Facility Design
Bloomington, MN – Fire Station Designs (Five)
Greenville, WI – Fire Station Design & Referendum Assistance
St. Peters, MN – Fire Station Design
Town of Superior, WI – Fire Station Design
River Falls, WI – Fire Station & EMS Station Design
Williams Bay, WI – Fire Station Design
Elk River, MN – Fire Station Designs (Three), Police Station Remodel, Joint Training Facility Design



Mark Molnar, PE

Construction Manager/Cost Estimator

Mark is the Director of Construction and Project Management at Wendel. He has 39 years of experience in the planning, design and management of multi-discipline facilities projects of all sizes, including gaming/ hospitality, public transit and commercial projects throughout the United States. Mark is well versed in a variety of project delivery methods, including traditional design bid build, contractor led construction management and professionally led construction management. He is experienced at acting as an owner's representative/owner's project manager for design and construction projects. Mark helps owners understand all of their options and assists them with choosing the delivery method that best fits their project needs.

Principal

License

Professional Engineer - NY, VA, AZ

NCEES

Education

ME, Civil Engineering, University at Buffalo, The State University of New York

BS, Civil Engineering, University of Notre Dame

BA, Mathematics, Saint Vincent College

Affiliations

Design Build Institute of America

Distinctions

New York State Facilities Journal, "Trouble Shooting Masonry Buildings"

Years of Experience

39 years

Project Experience

Lancaster Police Garage, Lancaster, NY

Lewiston Fire Co. No. 1, Lewiston, NY

Wright's Corners Fire Hall, Lockport, NY

Eden Emergency Squad Building, Eden, NY

Grand Island Fire Company, Grand Island, NY

Bowmansville Fire Company, Bowmansville, NY

Pine Hill Fire Company, Cheektowaga, NY

Eggertsville Hose Company, Eggertsville, NY

Forks Fire Company, Cheektowaga, NY

Town of Lockport Court and State Police Building, Lockport, NY

Kenworth NE CNG Garage Upgrades, Rochester, NY

St. Cloud Metropolitan Transit Commission, St. Cloud MN

La Pointe Emergency Services Building, La Pointe, WI

Riverside Fire Station, Rothschild, WI

La Crosse Fire Station No. 2, La Crosse, WI

La Crosse Fire Station No. 4, La Crosse, WI

Cumberland Hospital, Cumberland, WI



MICHAEL FISCHER AIA, LEED AP
Project Principal

Mike has more than 36 years of experience as project principal, project manager, project designer, and project architect on planning, urban design, educational, commercial and governmental projects. He has become an expert on Tax Increment Finance District analysis assisting over 100 cities with strategic planning for TIF Districts.

Mike has served on more than 50 committees, boards and community task forces, including a term as a City Council President in Superior, Wisconsin, and as Chair of a Metropolitan Planning Organization as well as serving on the Edina City Council.

Relevant Project Experience

CITY OF SUPERIOR | SUPERIOR, WI
Superior Central Fire Station
Superior City Hall
Administrative Office Planning Study
Liberty Building

CITY OF CLOQUET | CLOQUET, MN
Cloquet Area Fire District PreDesign

CITY OF SANDSTONE | SANDSTONE, MN
City Hall and Library
Fire Hall

CITY OF GRAND MARAIS | GRAND MARAIS, MN
City Hall and Municipal Liquor Store
Predesign and Design
Public Works Facility
Highway 61 Concept Design/
Community Facilitation

ST. LOUIS COUNTY | COOK, MN
David M. Skelton Transportation
Building

ST. LOUIS COUNTY | DULUTH, MN
Joint Public Safety Building

MOWER COUNTY | AUSTIN, MN
Multipurpose Building

**WABASHA PORT AUTHORITY AND
DEVELOPMENT AGENCY | WABASHA, MN**
National Eagle Center

REGISTRATIONS

Licensed Architect in
MN, WI

ACCREDITATIONS

U.S. Green Building
Council Leadership
in Energy &
Environmental Design
Accredited Professional
(LEED AP)

EDUCATION

Master of City Planning
Master of Science
in Real Estate
Development
Certificate of Urban
Design Massachusetts
Institute of Technology
(MIT)
Bachelor of
Architecture, North
Dakota State University



ANNE PORTER CID
LHB Team Leader/Interior Architecture

Anne’s warm, welcoming nature quickly turns strangers into friends. But longtime clients note that approachability is just one of Anne’s many strengths: she is also creative, tenacious, competent, patient, and skilled at problem-solving. With more than 20 years’ experience in interior design, she has a deep understanding of proposals, programming, project budgets, design and construction documents, and construction administration. She has collaborated with clients at all stages of facility design, including master planning and predesign, and knows how to engage stakeholders, communicate with the public, and build consensus among the design team, contractors, and owners. A life-long resident of Superior, WI, she is actively involved in her community and knows firsthand how designers, community leaders, and residents can enhance the aesthetics, amenities, and economic prospects of a place.

Relevant Project Experience

CITY OF SUPERIOR | SUPERIOR, WI
Superior Fire Department
Headquarters

Superior Fire Station 2 Concrete
Repair

Superior Main Library

Environmental Building BTO002
Office Reconfiguration

Fairlawn Mansion Boiler Replacement

Marina Boiler Repair

Convention Center Study

Marina Ship Store Reroof

**UNIVERSITY OF WISCONSIN, SUPERIOR
| SUPERIOR, WI**

Brick Investigation Study and Design
Services

Barstow Hall Science Laboratory and
Applied Research Renovation

Concrete Restoration Master Study

Athletic Facility Masterplan

Jim Dan Hill Library Renovation

Holden Fine Arts Renovation

Residence Hall Window Replacement

Fiber Optic Backbone Replacement

Wessman Arena Dehumidification

Study



HEIDI BRINGMAN

PLA, LEED AP BD+C, CDT, CCCA, MWPCP
Landscape Architect

Heidi's love of art, science, and nature propelled her into landscape architecture. She thrives on puzzling out big goals and intricate details with clients, helping them build projects that exceed expectations. Licensed for more than 20 years, she has a deep understanding of public engagement, site master planning, and the design of trails, parks, and public spaces. She enjoys working on projects of all sizes and has assisted many municipal and private clients with establishing and implementing design standards. In addition to being a landscape architect, Heidi has been a specialist in wetland and environmental services since 2003 and brings this unique perspective to development projects. She is certified through the Minnesota Wetland Professional Certification Program.

Relevant Project Experience

- CITY OF SUPERIOR | SUPERIOR, WI
Barker's Island, North End Site Improvements
Hammond Park Restroom Facility
Center City Park
Billings Park Site Improvements
Gateway Signage at Belknap Bridge and Highway 2
- CITY OF GRAND MARAIS | GRAND MARAIS, MN
Public Works Facility
- ST. LOUIS COUNTY | COOK, MN
David M. Skelton Transportation Building
- UNITED STATES FISH & WILDLIFE SERVICE (USFWS)
Necedah National Wildlife Refuge; Necedah, WI
Detroit Lakes Wetland Management District; Detroit Lakes, MN
Detroit River International Wildlife Refuge Visitor Center and Headquarters Building; Detroit, MI
- WITC | RICE LAKE AND SHELL LAKE, WI
Campus Site Improvements
Rice Lake Parking Lot and Site Expansion
Shell Lake Parking Lot

REGISTRATIONS

Licensed Landscape Architect in WI, MN

ACCREDITATIONS

U.S. Green Building Council Leadership in Energy and Environmental Design Accredited Professional Building Design + Construction (LEED AP BD+C)
Construction Documents Technologist (CDT)
Certified Construction Contract Administrator (CCCA)

MnBWSR Mn

Wetland Professional Certification Program (MWPCP)

AFFILIATIONS

American Society of Landscape Architects (ASLA), and MN-ASLA Chapter, Member
St. Louis River Alliance, Board Member 2013-2019
Osprey Wilds Environmental Learning Center, Board Member 2019 - present

EDUCATION

Master of Landscape Architecture, College of Design, University of Minnesota
Bachelor of Arts, St. Olaf College



AUSTEN BRYAN PE

Electrical Engineer

Austen works with LHB's Energy & Industry group managing design teams to provide engineering services with a focus in pipeline and pump station design. His background includes power and control applications including power loading calculations (MV switchgear [4.16kV], MCC [480V], and LV distribution [120/240V]), power analysis and equipment/cable sizing, cable tray design and loading, motor control scheme developments/analysis, and material requisition development/approval drawing review. Austen is experienced in helping clients develop building layouts, control panel layouts, and detailed design associated with instrumentation control. He has experienced in pipeline pump station/terminal design including both new construction and existing facility integration.

Relevant Project Experience

- UNIVERSITY OF WISCONSIN, SUPERIOR | SUPERIOR, WI
Barstow Hall
Sports and Activity Fields Redevelopment
Wessman and Gates Switchgear
Bleacher Demolition
- MNDOT | GARRISON, MN
SP 1804-90 & SP 4814-56, TH 169 Reconstruction and Roundabout, Engineering review of lighting design and specifications
- ENBRIDGE (U.S.)
Line 3 Segment 18, Detailed Design of Line 3 tie-in to Superior Terminal and sampler system; Superior, WI
Superior Terminal Power Reliability, detailed design of power infrastructure upgrades; Superior, WI
Explorer Connection to Manhattan Southern Lights, detailed design; Manhattan, IL
Line 6B Record Drawings, field verification, and drafting management; Niles, MI and Griffith, IN
Line 67 Phase II Flowmeter Replacement, detailed design; Deer River and Viking, MN

REGISTRATIONS

Licensed Professional Engineer in WI, MN, AK, IL, KS, KY, LA, MS, MO, MT, OH, OK, TN, VT, and WY

AFFILIATIONS

Institute of Electrical and Electronics Engineers (IEEE), Arrowhead Section Power & Energy Society, Member

EDUCATION

Bachelor of Science, Electrical Engineering, University of Minnesota Duluth



DAN SHAW PE, CCCA, LEED AP
Civil Engineer

Dan will provide Civil Engineering and Site Design for the team for design and quality checks utilizing his knowledge. Dan has more than 29 years of experience providing civil design services, specializing in hydraulic/hydrologic analysis of storm water quality and quantity control systems. His design skills include site planning, site grading, site drainage and storm water control systems, road design, sanitary sewer conveyance systems and water supply systems. Dan is also experienced in specification writing, construction site review and construction contract administration.

Dan coordinates the design process to ensure completion of construction plans and specifications on time and within the budget. His role requires frequent communication with the client, public agencies and other consultants.

Relevant Project Experience

CITY OF SUPERIOR | SUPERIOR, WI
Superior Fire Department Headquarters
Barker's Island South End Restoration
Hammond Park Restroom Facility
Barker's Island Redevelopment Phase II

CLOQUET AREA FIRE DISTRICT | CLOQUET, MN
Cloquet Area Fire District Fire Station

FOREVER YOUNG HISTORIC REHABILITATION | DULUTH, MN
Historic Duluth Armory Design and Renovation

CITY OF GRAND MARAIS | GRAND MARAIS, MN
Public Works Facility

ST. LOUIS COUNTY
SLC-Sheriff Admin/911 Center
David S. Skelton Transportation Building

END-O-LINE RAILROAD PARK AND MUSEUM | CURRIE, MN
Turntable Assessment and Rehabilitation

JAQUES ART CENTER | AITKIN, MN
Condition Assessment

REGISTRATIONS

Licensed Professional Engineer in Minnesota, Wisconsin, and Washington

CERTIFICATIONS

Certified Construction Contracts Administrator (CCCA)

ACCREDITATIONS

U.S. Green Building Council, Leadership in Energy and Environmental Design Accredited Professional (LEED AP)
Construction Documents Technologist (CDT)

EDUCATION

Bachelor of Science, Civil Engineering, University of Washington

RECOGNITION

ACEC/MN Grand Award and ACEC National Award for Superior Street Reconstruction



ALEC ASHTON PE, CDT, FPE
Mechanical & Fire Protection Engineer

Alec is a Mechanical and Fire Protection Engineer, and has experience in mechanical, plumbing, and fire protection systems designs, including typical HVAC designs, dust collection and exhaust systems, wet and dry pipe sprinkler systems, high expansion foam systems, atrium smoke control, photovoltaic array design, and rainwater reclamation systems.

He has experience working with local and federal government clients on projects ranging from assessment to replacement of fire protection and mechanical systems.

Relevant Project Experience

CITY OF SUPERIOR | SUPERIOR, WI
Superior Fire Department Headquarters
Environmental Building Reconstruction
Fairlawn Boiler Replacement
Marina Boiler Replacement

CITY OF CLOQUET | CLOQUET, MN
Fire Station

CITY OF GRAND MARAIS | GRAND MARAIS, MN
Public Works Facility

ST. LOUIS COUNTY | COOK, MN
David M. Skelton Transportation Building

DOUGLAS COUNTY HISTORICAL SOCIETY & CITY OF SUPERIOR | SUPERIOR, WI
Fairlawn Mansion Boiler Replacement

UNIVERSITY OF WISCONSIN-SUPERIOR | SUPERIOR, WI
Kiln Replacement

Wessman Design Services for Dehumidification

Wessman Arena Dehumidification Study

Holden Fine Arts Renovation

Barstow Hall Renovation

Halbert Heating Plant Emergency Generator Replacement

Residence Hall Window Replacement



“Building long-term relationships and trust with clients is rewarding. We are focused on striving to develop the right solution for each project.”

Professional Affiliations

- Engineers Without Borders
- Timber Framers Guild
- American Wood Council
- American Institute of Steel Construction

Professional Practice

- Clark Johnson Engineers (Bellevue, WA) 1995-1999
- Magnusson Klemencic Associates (Seattle, WA) 1999-2009
- Northland Consulting Engineers LLP 2009-Present

Professional Registrations

Minnesota, Wisconsin, Illinois, Nebraska, New Hampshire, Washington, Wyoming, Georgia, Arizona, Ohio

Education

University of Washington, Bachelor of Science, Civil Engineering, 1995

Tom Rines, PE, SE

Principal, Structural Engineer

Tom has over 25 years of structural engineering experience designing a wide variety of structures as well as 8 years of carpentry experience. Originally from Minnesota, he began his professional career in Seattle where he worked on projects throughout the West Coast and Mountain States region. Since joining Northland Consulting Engineers in 2009, he has strengthened the firm by integrating innovative and thoughtful ideas into our workflow and design processes. He is known for a pragmatic and creative approach to design, asking hard questions and generating thought provoking discussions. Tom's vast engineering and construction experience is highly valued by his clients and team members.

Tom is proud to be a part of Northland Consulting Engineers where we pride ourselves on the long-term relationships we have formed with our clients. We believe that our high level of service sets us apart from other firms.

Representative Project Experience

Lake Country Power Cooperative headquarters. New Construction, 68,000 SF facility including maintenance bays with cranes, wash bays, vehicle storage and office areas. The structure is primarily precast tilt-up walls with bar joist roof. The partial second floor is precast plank. Grand Rapids, MN 2018.
NCE Scope: SE of Record

P&H Mine Pro (Joy Global) Mine Equipment Service Center and Parts Warehouse. New Construction, 95,000 SF facility including maintenance bays with heavy bridge cranes, wash bay, vehicle storage, tall warehouse and two-story office space. The structure is primarily tall bay pre-engineered steel building; however, the office space is conventional steel frame with composite steel and concrete floors with high-end finishes. Virginia, MN, 2010
NCE Scope: SE of Record

Lakehead Constructors Inc. New Construction, 37,000 SF facility including maintenance bays with cranes, wash bay, vehicle storage and office spaces. The structure is primarily precast tilt-up walls with bar joist roof. The partial second floor is precast plank. Superior, WI 2019.
NCE Scope: SE of Record

Itasca County Highway Maintenance Facility. New Construction, 15,000 SF facility including maintenance bays with cranes, wash bay, vehicle storage and office areas. The structure is primarily a pre-engineered metal building with a partial second floor and a shallow frost protected foundation. Grand Rapids, MN 2018
NCE Scope: SE of Record

Ely Joint Use Maintenance Facility. New Construction, 67,000 SF DOT and County Shared facility with vehicle storage, maintenance bays with cranes, wash bay and office spaces. The structure is primarily tilt-up precast walls with bar joist roof. The partial second floor is precast plank. Ely, MN 2004
NCE Scope: SE of Record



+



Wendel's award winning public safety design team

Related Project Experience



REFERENCES

The public safety clients and associated projects referenced below are examples of the experience our team brings to your project, whether a study or complete design. Every one of these projects brings with it a certain set of knowledge gained that can ultimately be passed on to our clients.

Lakeside Fire-Rescue

(Edgerton, WI)
Randall L. Pickering, Fire Chief
pickeringr@edgertonfire.com
(608) 332-9462 (cell)

St. Peter Fire Station

Todd Prafke
City Administrator
City of Saint Peter
(507) 934-0663

Knoxville Public Safety Building

Aaron Fuller, Chief of Police
Knoxville Police Department
641-828-0541

Town of Milton, WI

Public Safety Building
Bryan Meyer, Chair
(608) 774-9229

Green Bay Fire Department

Matthew Knott, MS, EFO, CFO
Fire Chief
(920) 448-3278
Matthew.Knott@greenbaywi.gov

Baraboo Area Fire & EMS District

Kevin G. Stieve, Fire/EMS Chief
City of Baraboo Emergency
Management Director
(608) 356-3455
kstieve@baraboofireandems.com

Chisholm Fire Department

Vern Manner, Chief of Police
vmanner@ci.chisholm.mn.us
Chisholm, MN

Town of Greenville

Eric Kitowski, Deputy Fire Chief
(608) 358-1942
Ekitowski@townofgreenville.com

La Crosse Fire Department

Ken Gilliam, Previous Fire Chief
Station #2 | (651) 270-7811

Jeff Murphy, Asst Chief of Ops
murphyj@cityoflacrosse.org
(608) 789-8042

City of Janesville

James Ponkauskas
Deputy Fire Chief
(608) 373-3433
ponkauskasj@ci.janesville.wi.us

Village of Suamico

Alex Kaker
City Administrator
(940) 434-2212
villageadministrator@suamico.org

City of Chippewa Falls

Lee Douglas, Fire Chief
(715) 723-5710

City of Verona

Bill Burns
Verona City Administrator (former)
(608) 821-8356

Cloquet Area Fire District

Jesse Buhs
Fire Chief
Mobile- 218-380-9840
Cloquet, MN

Station Highlights:

- 31,000 SF
- Volunteer Department, planning for future career staff

New Construction

Estimated cost of work: \$12.5M

Estimated total project cost: \$14M

Phase: Design Development
Anticipated Opening: 2026

Contact: Ryan Simmons, Fire Chief, firechief@platteville.org

PLATTEVILLE FIRE DEPARTMENT

Platteville, WI

The Platteville Fire Department is a volunteer department, located in the southwest corner of Wisconsin. In the winter of 2020, Five Bugles Design was brought on board to conduct a study of their existing 1960's facility. After consideration of the two-story facility, with incredibly low floor-to-floor heights, and an extremely landlocked site, it was determined that a new facility should be designed and constructed to replace the existing station.

The new station will be a new construction, single-story facility, with a mezzanine, and will be located on the site of the former EO Gray Learning Center. The station's seven apparatus bays will be prominently located on the intersection of US Highway 51/W. Adams Street, and N. Chestnut, which is a major path of travel out of Platteville to the north.

Upon entering the station, visitors will enter a large lobby with historic displays. This lobby will then allow access to a large training room, public toilet rooms, and the district's administration. The training room will allow for seating for 60 in tables and chairs, will have a dedicated kitchen, and will have storage spaces.

The administration zone will be comprised of an open office, a work room, three private offices, and a conference room, which will have access to the lobby. Located directly off the administrative spaces will be the command garage, which will house the department's smaller vehicles.

Located just off the public zone, the core of the facility will house the staff support spaces, such as the watch room, workshop, self-contained breathing apparatus (SCBA) clean and fill station, gear lockers, gear laundry and decontamination all-gender toilet/showers. These spaces will have direct access to the apparatus bay, which will have seven drive-through bays.

Though the department is currently volunteer based, the administration is looking out for their volunteers, as well as looking to the future needs of the department. Because of this, seven single-user dorm rooms will be constructed, as well as two all-gender single-user toilet rooms, a kitchen, dining room, and day room. Until the department becomes full time, the dorms could be used by local university students who serve the department, or by other volunteers during anticipated weather events.

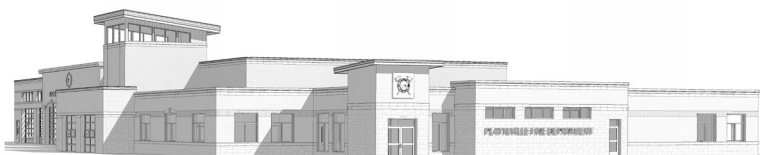
With design of this facility underway, the project is slated to break ground in the spring of 2025, with occupancy in the spring of 2026.



1 FRONT BAY ISO SCALE



2 FRONT COMMAND ISO SCALE



3 FRONT ENTRANCE ISO SCALE

Station Highlights:

- 4 Drive-through apparatus bays
- Training Center
- State-of-the-art Decontamination zone

Anticipated \$6.5M Total

New Construction

Ongoing (June 2022) Est.

Brigid Murphy
City Administrator
27 Red River Avenue S
Cold Spring, MN 56320
320-685-3653
bmurphy@coldspring.gov

COLD SPRING PUBLIC SAFETY BUILDING

Cold Spring, MN

The City of Cold Spring hired Wendel, home of Five Bugles Design, after an independent assessment of their current Fire and Police station recommended its replacement.

The Five Bugles team is now in the early phases of designing the new Public Safety Building for the City's the full-time police department and the volunteer fire department. Budget, efficiency of space, and workflow are the primary drivers in the design of this new facility. Special attention was paid to consolidate space used between the two departments, with all shared spaces located in the central core of the facility.

Directly off a secure lobby will be a community training room, a soft interview room, public restrooms, and an administration desk large enough to accommodate two people in the future. Both departments have direct access to their spaces off the lobby, as well as access to a joint work and copy area. The police department is efficiently comprised of private offices, a break room, and a large command conference room wrapping around an open office for patrol officers.

A booking area with a hard interview room is located off the departments sallyport and garage, with a direct exterior exit for detainee dispatch.

The department spaces also include a large evidence intake and storage space, an all-gender open locker room, gun cleaning, and a private quiet room to allow officers a personal space.

The police locker room is designed to be able to share three individual showers and a residential laundry room with the fire department to help reduce redundant fixtures spaces between the departments.

Located off the fire departments four-bay apparatus bay, with an alternate for a fifth bay, is a multi-purpose tower that will be used for training, hanging hoses to dry, and as access to the mezzanine. A state-of-the-art personal decontamination zone will include PPE storage, gear laundry, SCBA cleaning, showers, and residential clothing laundry spaces. A work shop and a watch comm office will be located just off the apparatus bay, with an adjacent large private office for the fire chief.

With design underway, the Cold Spring Public Safety Building bid in Spring 2023 with final completion in 2024.



Station Highlights:

Station 1:

- 32,680 SF
- New Construction
- Two-Story
- Satellite Station with Headquarters
- Will have space for third-year off-duty interns
- Estimated cost of work: \$16.3M
- Estimated total project cost: \$19.3M

Station 2:

- 20,260 SF
- Renovation & Addition
- Single-story facility
- Space for first- or second-year off-duty interns at adjacent facility

Estimated cost of work: \$8.5M

Estimated total project cost: \$10.1M

Station 3:

- 16,840 SF
- New Construction
- Single-story

Estimated cost of work: \$8.7M

Estimated total project cost: \$10.4M

Station 4:

- 21,175 SF
- New Construction
- Single-story
- Space for first- or second-year off-duty interns

Estimated cost of work: \$10.5M

Estimated total project cost: \$12.6M

Phase: Design Development

Anticipated Opening: Phased: 2026 - 2028

Contact: Randy Pickering, Fire Chief,
pickeringr@edgertonfire.com

LAKESIDE FIRE DISTRICT

Edgerton, WI

The Lakeside Fire District is comprised of 11 municipalities in south central Wisconsin. They serve a geographical area of 220 square miles across three counties, 19.7 miles of Interstate 39/90, and portions of Lake Koshkonong, as well as the Rock, Yahara, Badfish, and Koshkonong rivers. Founded in 2023, the new district is now in need of multiple facilities to cover their diverse and vast district.

Prior to the formal founding of the District, Five Bugles Design worked with several of the individual municipalities to create concept plans for new stations. Once the district formed, these concepts, as well as their locations, were reconsidered. Ultimately, the department determined it was best to design and construct four stations, as well as a headquarters facility.

Station 1: Neville & District Administration is designed as a new construction, two-story facility, in Neville, WI. This location is centralized within the district, is adjacent I39/90 for quick access, and is located just off the base of the Rock River and Lake Koskonong. Being designed for equity, the Satellite Station 1 will comprise the lower level of the facility. This will be comprised of living quarters for both on-call staff and three off-duty third-year interns, personal decontamination (decon), apparatus support, and will have direct access to the apparatus bays.

The upper level of the facility is designed to accommodate the districts administration; small, dedicated space for the Wisconsin Department of Transportation; and central training for the district.

Station 2: Edgerton is an existing facility that will be partially razed, renovated, and an addition will be constructed. This facility will feature living quarters for the on-duty staff, a small training room, station administration, apparatus support spaces, and apparatus bays. The off-duty first- or second-year interns will be housed in a facility located on the adjacent property.

Station 3: Milton West is a new construction, single-story facility with a mezzanine. This station will be constructed on a greenfield site, located along side the local high school. Special consideration was given to this site due to the high school traffic, which can dramatically increase at peak times. An additional drive will be constructed to the north, in case the school traffic will impact response. Additionally, with the internship program being a two- or three-year program (two for fire-fighter, three for paramedic), this will be the only station that will not house interns.

Station 4: Milton East will be a new construction, single-story facility with a mezzanine. This facility will share a site with Town of Milton's Town Hall facility. By sharing a site, the District and the Town will be able to share amenities such as parking, a training room, and on-site water treatment. Station 4 will house six first- or second-year interns, as well as the on-duty staff.

Designed for equity between the stations, all stations will be designed with: living quarters, including kitchen, dining, day rooms, and a mothers / quiet room; individual dorms; individual all-gender toilet / shower rooms; personal decontamination including gear lockers, gear laundry and all-gender toilet / shower rooms; apparatus support; apparatus bays; training; and station administration including private offices, and a watch room with direct access to the apparatus bay.

The four buildings will all also share similar aesthetics and finishes for both the exterior and the interior finishes.

With the projects currently in design, it is intended that the four facilities will be constructed in an overlapping, phased approach; beginning with Station 4 and the Town Hall, then Station 3 and Station 1, and finally the renovation and addition of Station 2.



Station Highlights

- 24,000 SF public safety
- New fire station with 4 apparatus bays,
- Training tower and state-of-the-art decontamination spaces
- New police station with a secure booking area, state-of-the-art evidence processing and storage, and secure front lobby.
- A 4-bed dormitory for EMT personnel.
- Shared community/training room.

Completed July 2024

Project Cost
\$10,500,000

Stephanie Skraba
City Administrator
(218) 254-7960
sskraba@ci.chisholm.mn.us

CHISHOLM PUBLIC SAFETY BUILDING

Chisholm, MN

The City of Chisholm, located in the heart of Minnesota's Iron Range, originally hired Wendel to provide an analysis of their existing 100-year-old downtown fire/police station. After the study quickly determined that renovation of the existing facility would not be feasible, our next task was to provide a site location study for a new public safety facility.

The site chosen for the facility on the east side of town will provide optimal response times for police, fire and EMT services. As part of Chisholm's sustainability commitment, the building is designed to meet Minnesota B3 guidelines. Features incorporated into the design include:

- Minimized site disturbance for native plant/animal accommodations
- Stormwater reclamation
- PV solar generation
- EV charging stations
- Daylight harvesting
- Energy recovery units
- Material reduction/reuse
- Envelope optimization
- Low-consumption plumbing fixtures
- Low-emitting finishes



Station Highlights:

- 22,550 sf
- Training Center
- Dormitories with pass-through gear lockers
- Kitchen
- Dining Room
- Day Room

\$5,000,000 (estimate)

\$4,947,311 Cost of Work

New Construction

Spring 2021

Alex Kaker

City Administrator

12781 Velp Avenue

Suamico WI 54313

940.434.2212

villageadministrator@suamico.org

SUAMICO NEW FIRE & EMS STATION

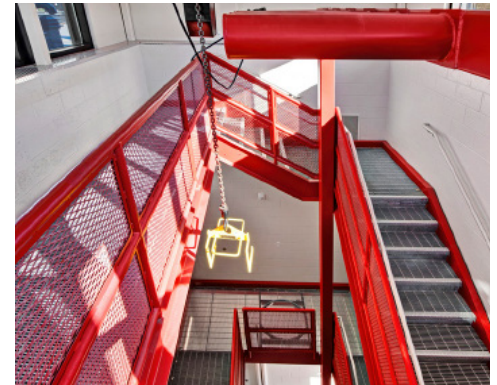
Suamico, WI

Upon completion of an existing facility assessment, the Village of Suamico retained the services of Five Bugles Design/Wendel to design its new 22,550 sf central station.

This two-story station was designed with function and the future in mind. The first floor of the facility features a small administration wing, large training room, apparatus support spaces, personal decon spaces, and a paid-on-call volunteer check-in area. Designed to have four apparatus bays as a base bid, two additional bays we added as an alternate in the bidding process. An additional future garage space was planned to be added to the facility's east side. This future garage would house smaller vehicles, freeing up space in the apparatus bay for larger equipment.

Accessed by the hose training tower, the second floor of the facility is private living quarters for personnel only.

Currently operating as a volunteer department, true living quarters were not needed. However, emergency medical services (EMS) for the Village is provided through Brown County EMS. Working together, it was determined that the second floor of the facility would be built out and rented to Brown County for use by its full-time staff. A mezzanine space was designed to be retrofitted into additional dorm spaces if the Village moves from a volunteer to a career model in the future. Second floor living quarters include dorm rooms, day room, kitchen, dining, and exercise space, which was placed here so that city employees could use it without having access to the rest of the facility or the living quarters.



Station Highlights:

- 24,680SF
- Training Center
- Volunteer Station: Fire & EMS
- 6 Drive-through apparatus bays dedicated to Fire
- State-of-the-Art Decontamination zone
- Exercise Room
- Shell-out space for future living quarters

\$6,200,000 (estimate)

\$6,232,485 Cost of Work

New Construction

December 2019

Eric Kitowski

Deputy Chief

W6860 Parkview Drive

Greenville, WI 54942

(608) 358-1942

Ekitowski@townofgreenville.com

GREENVILLE FIRE & SAFETY

Greenville, WI

The Town of Greenville selected the Wendel/Five Bugles Design team to provide a feasibility study and assist in referendum support for replacing their existing central fire station. While working with another architectural firm, the Town experienced a 70/30 failed referendum in 2015. Our team was then hired to reconsider the Town's needs while reducing the size and cost of the proposed station. The result of these reductions and our informational campaign resulted in a successful 58% supported referendum in the Fall of 2018.

Immediately following the successful referendum, the Wendel/Five Bugles Design began design of the new 24,680 S.F. volunteer fire station.

This new facility will include a training room, training tower, administrative offices, exercise room, state-of-the-art decontamination area and six drive-through apparatus bays.

With an eye on the future, the project also includes building out the exterior shell for future living quarters (2,290 sf) to be completed when the need arises. Future living spaces will include six dorm rooms, a day room, kitchen and dining room, until then this shelled out space will serve the department as a training space.



Station Highlights:

- 28,000 sf
- Two Story Facility
- Administrative & Living Quarters
- Training Requirements
- Exercise Room
- Decontamination Room
- Two Fire Poles

\$7,750,000 (estimate)

\$7,213,518 Cost of Work

New Construction

Spring 2023

Ken Gilliam

Previous Fire Chief

Station #2

(651) 270-7811

Jeff Murphy

Assistant Chief of Operations

La Crosse Fire Department

726 5th Avenue South

La Crosse, WI 54601

murphycityoflacrosse.org

O: (608) 789-8042

M: (608) 769-9747

LA CROSSE FIRE STATION NO. 2

La Crosse, WI



Designed as a replacement facility for its existing Station 2, the new La Crosse Station 2 will serve the city's west side, housing a two-engine company and the department's administrative team. This 20,000 SF facility is to be located on a one-acre site alongside the University of Wisconsin - La Crosse. With the heavily trafficked La Crosse Street to the north, Oakland Street to the west, and UW-L to the east and south, the overall site design and layout of the facility focused on maintaining user safety, the need for a highly functional and response driven station and a "no back-side" aesthetic for the station.

The site was divided up with response on the north side of the facility (facing La Crosse Street), apparatus return and shift-working parking on the southeast side, and administration and visitor entry and parking on the southwest portion of the property. The facility was shifted as far west on the site as possible to maintain grass and separation between the station and UW-L. Additionally, all four sides of the facility were given consideration to be appealing. Inside the facility, the overall layout continues to focus on safety for the

responders and creating division between these three user groups. To do so, the first floor of the station is for responder use only and houses the watch/command office, dorms, personal decontamination spaces apparatus support spaces, and the exercise room, which opens to the apparatus floor for additional space. The station's small lobby directs visitors to the second level administration areas through and elevator and set of stairs.

On the second level, a small reception space adjoins conference room. Directly off reception is the department's administrative space, including private offices for the fire chief, assistant chiefs, division chief, fire investigators offices, an open office, the battalion chief's office, and a shared shift officer's office. The second level of the facility also houses the remaining living spaces, including the kitchen and dining space, a rooftop patio, and the day room. Two fire poles are located in these living spaces to allow responders to quickly move to the apparatus bay from the second level. Station 2 was completed in the Spring of 2023 with full occupancy occurring in June 2023. Wendel was contracted to perform all design and construction management activities using our Master-Builder Approach.



Station Highlights:

- 28,000 SF
- Two Story Facility
- Administrative & Living Quarters
- Training Requirements
- Exercise Room
- Decontamination Room
- Two Fire Poles

\$8,200,000 (estimate)

\$8,171,791 Cost of Work

New Construction

Spring 2023

Ken Gilliam

Previous Fire Chief

Station #2

(651) 270-7811

Jeff Murphy

Assistant Chief of Operations

La Crosse Fire Department

726 5th Avenue South

La Crosse, WI 54601

murphycityoflacrosse.org

O: (608) 789-8042

M: (608)769-9747

LA CROSSE FIRE STATION NO. 4

La Crosse, WI



In the winter of 2021 and well into design of La Crosse Fire Station No. 2, our team was hired by the City of La Crosse to begin design and ultimately perform construction management services on the City's new Fire Station No. 4, located on the City's North side.

The project consisted of the City purchasing seven homes next to their existing fire station No. 4 to ultimately raze and become home for the new fire station. Original concepts also had the existing station no. 4 being demolished to allow for the construction of station no. 4, however the city elected to keep the existing station, allowing it to remain and potentially be purchased by a private entity.

This four bay station includes living quarters for eight personal, state of the art decontamination areas, exercise room and a watch office overlooking the front apron and apparatus bays.

Also included in the design is a community room with a generous lobby to display the department's rich history. Police entities are included in the design to allow for a "satellite" station for their use in lieu of traveling back to the main police headquarters.

This project is currently under construction with completion scheduled for the summer of 2024. Wendel is contracted to perform all design and construction management activities using our Master-Builder Approach.



Station Highlights:

- 48,000 sf central station
- Dedicated & Flexible Emergency Operations Center (EOC)
- Satellite Station with most of the same features as Station 1

Station #1: \$15,200,000 (estimate)

Station #2: \$5,700,000 (estimate)

New Construction

Bidding Winter 2024

Kevin G. Stieve

Fire/EMS Chief

Baraboo Area Fire & EMS District

City of Baraboo Emergency

Management Director

(608) 356-3455

kstieve@baraboofireandems.com

CITY OF BARABOO FIRE/EMS STATION

Baraboo, WI

Five Bugles Design was commissioned to design and construct a new fire station for the City of Baraboo. During early programming and facility tours, it was determined that with the city's current needs and anticipated growth, the department would need a satellite station in the immediate future. This realization led to the project scope expanding to include the concurrent design of one large, central station, and a smaller satellite station.

The 48,000sf Central Station will serve as the department's headquarters, and primary training facility. Three primary factors influenced the layout of this facility: response times, particularly with such a large facility; the desire to separate day-to-day operations; and the quantity of apparatus and support vehicles. All three of these factors drove the resulting design, in addition to the standard concerns of safety and civilian / department interaction.

Features of the station include the departments administration, dedicated and flexible Emergency Operations Center (EOC), extensive training facilities, exercise space, a mental health room, personal decontamination, and living quarters for ten.

The smaller satellite station provides most of the same features as Station 1, at a smaller scale. This includes office space, a watch room, three drive-through apparatus bays, personal decontamination spaces, exercise room, training facilities, and living quarters for six.

The project is set to bid in the Spring of 2024, with completion of both facilities in the Fall of 2025.



Station Highlights:

- Six Apparatus Bays
- Training Room
- Training Tower
- State-of-the-art Decontamination
- Living Quarters for Five

Cost: \$4,500,000 Cost of Work

Construction Completion: 2021

Rob Bowen, Fire Chief
211 Grand Ave.
Rothschild WI 54474
Office (715) 359-3500
Cell (715) 370-4134

RIVERSIDE FIRE STATION

Schofield, WI



After the consolidation of two fire departments into the Riverside Fire District, it was determined that a new facility should be designed and constructed. Five Bugles Design worked with the design committee to review numerous sites in terms of their constructability and response times. Ultimately, it was determined that the new facility would be constructed on the site of the former Rothschild Fire Station. This challenging site requires the razing of three structures, and the installation of a sheet piling wall to the north of the structure.

This new station features a two-door apparatus bay for the District's EMS response vehicles, and a four-door apparatus bay for the Fire response vehicles, with space between them for turn our lockers, storage, SCBA cleaning, and a mezzanine accessible by the training tower on the front of the facility. This tower will serve to dry hoses and will allow training opportunities for this department, while creating a stunning architectural feature on the public side of the facility. Also included in the station is a large community room, offices for the District, living quarters for five, and a state-of-the-art personal decontamination zone.



Station Highlights:

- 20,000SF
- Central Station
- Career Station: Fire & EMS
- 6 Drive-through apparatus bays
- Training Center
- Training Tower
- Dormitories with pass-through gear lockers
- Kitchen
- Dining Room
- Day Room
- Exercise Room

\$4,000,000 Cost of Work

New Construction

Spring 2017

Lee Douglas

Fire Chief

211 Bay Street

Chippewa Falls, WI 54729

715.723.5710

CHIPPEWA FALLS FIRE & EMS STATION

Chippewa Falls, WI

The City of Chippewa Falls selected Five Bugles Design to provide a comprehensive G.I.S. Site Selection Study as well as Architectural Design Services for the City's new Central Fire Station. Located on the City's east side, its location with immediate access to two highways provided the opportunity to adequately serve the growth on the South side of Chippewa, but also reach the industrial park on the City's North side.

This facility is home to the Fire administration, as well as the Fire Secretary and the Fire Inspection Department.

The City's rich history and culture was reflected throughout the facility's architectural design.

Beautiful exposed wood beams in both the entry lobby and the predominate training tower were designed to reflect the Northwoods feel that is so proudly displayed at local businesses.

A large bronze bell is proudly displayed at the front of the station. This bell was forged in 1882 and was used by citizens and firefighters when smoke or fire was detected as an alarm system. The departments crest was also cast into stone medallions and installed into the station's exterior. Finally, a bronze sculpture is showcased in the lobby which symbolizes the front line of action.

The project was completed in April 2017, on time and under budget.



Station Highlights:

- 16,450SF
- Career Station: Fire & EMS
- 5 Drive-through apparatus bays
- Training Center
- State-of-the-art Decontamination zone
- Dormitories with pass-through gear lockers
- Kitchen
- Dining Room
- Day Room
- Shielded Patio
- Exercise Room

\$4,130,000 Cost of Work

New Construction

July 2018

Chris Bell
Fire Chief
216 South Dewey Street
Eau Claire, WI 54701
(715) 839-5012

EAU CLAIRE FIRE STATION NO. 10

Eau Claire, WI

In 2017, the City of Eau Claire selected Five Bugles Design, a division of Wendel, to be the architect on a new satellite station, replacing existing Fire Station No. 10 on the city's East Side. Replacement of Station No. 10 had been determined during a Lifecycle Analysis Study of the existing station, also performed by Five Bugles. This study revealed a myriad of issues; most notable were its location on an extremely busy intersection making it difficult to pull into and out of the drives, its landlocked site making expansion impossible, and both the size and condition of facility itself which no longer met the needs of the department.

Special consideration in this project was taken with the location of and preparation of the selected site. As with nearly all fire stations designed by Five Bugles, our team performed a comprehensive GIS study to determine which site would serve the City and the Department the best. The site, which was selected based on its location, accessibility, and availability, was a densely vegetated site that due to a ravine had been used by locals as a waste disposal area in the early 1900's.

Geo-technical data indicated that approximately half of the proposed facility could be placed in the northwest quadrant of the property which was comprised of virgin soils, while the other half would be placed over the former waste land. In order to prepare the waste land to receive this new facility, the ground was excavated to depths of 30' to remove materials, and a Phase 2 Environmental Site Assessment was completed indicating the need for a passive vapor system to be installed under the building slab.

Services provided by Wendel and Five Bugles Design included architectural design, GIS, and a Life Analysis Study. This project was bid in the late summer of 2017, construction began shortly afterwards, and the station opened in July of 2018.



Station Highlights:

- 33,000 SF
- Central Station
- Career Station: Fire & EMS
- 8 Drive-through apparatus bays
- Training Center
- Dormitories with pass-through gear lockers
- Kitchen
- Dining Room
- Day Room
- Shielded Patio
- Exercise Room
- Station Alerting System

\$6,000,000 Cost of Work

New Construction

Spring 2016

James Ponkauskas,
Deputy Fire Chief
303 Milton Avenue
Janesville, WI 53545
608.373.3433
ponkauskasj@ci.janesville.wi.us

JANESVILLE FIRE & EMS STATION

Janesville, WI

The City of Janesville hired Five Bugles Design to replace its aging Central Fire Station. While the location of the existing station on Milton Avenue was determined by GIS study to be the most desirable location, the site was too small. The size of the site and how to continue operation of the existing station during construction became the projects primary consideration.

Through extensive planning, it was determined that in order to position the new facility in this location, the City needed to purchase several adjacent properties and remove the residential homes upon them as well as vacate a small street on the northwest side of the property.

By razing these facilities, the new station was able to be placed to the north of the existing facility, which allowed the continued 24/7 operations throughout construction.

The new 33,000 sf station reflects the original station in its architectural styling, further reflected by the reuse of a fire pole from the original station.

This station bid early in 2015 and opened to the public April 1, 2016. Though this project had its challenges, the end result beautified the intersection of Milton and Centerway, allowing it to truly become the Gateway to Janesville's Downtown.



Station Highlights:

- 15,233SF
- Career Satellite Station: Fire & EMS
- 4 Drive-through apparatus bays
- Training Center
- Training Tower
- State-of-the-Art Decontamination zone
- Exercise Room
- Dormitories with pass-through gear lockers
- Kitchen
- Dining Room
- Day Room

\$4,600,000 Cost of Work

New Construction

Spring 2020

Robert Barteck, Fire Chief
Wausau Fire Department
606 E Thomas Street
Wausau, WI 54403
(715) 261-7901
robert.barteck@ci.wausau.wi.us

WAUSAU FIRE STATION NO. 2

Wausau, WI

The City of Wausau selected the Wendel/ Five Bugles Design team to design a replacement facility for the existing station no 2 which serves the city's west side. Through GIS study the ideal site location for this new station was located on Highway 52. Due to the predominance of this location, this new station was designed to serve as a gateway into the Downtown.

This satellite station features complete living quarters with 6 dorm rooms, a training room, a training tower, and exercise room, as well as a state-of-the-art decontamination area and four drive-through apparatus bays.

Though public access will be limited to this station, it was designed to have a community zone with access to public toilets and the training room while the rest of the station will remain secure from the public.

Construction began in Summer 2019 with final completion in Spring 2020.



Station Highlights:

- 44,000SF
- Career Station: Fire & Private EMS
- 6 Drive-through apparatus bays dedicated to Fire
- 2 ambulance bays
- Training Center
- Public Museum
- Decontamination zone
- Dormitories with pass-through gear lockers
- Kitchen
- Dining Room
- Day Room
- Exercise Room

\$9,180,000 Cost of Work

New Construction

July 2015

Bill Burns

**Verona City Administrator (former)
City of Middleton
7426 Hubbard Ave. Middleton, WI
53562 bburns@ci.middleton.wi.us
608.821.8356**

VERONA FIRE & EMS STATION

Verona, WI

Following a study of their existing facility and with consideration to their rapidly growing community, it was determined that the City of Verona needed to replace their existing fire station. The new facility would allow their volunteer station to become a career station with additional paid-on-call staff. This station also has the unique partnership with the Fitch-Rona EMS; a private paramedic EMS program that serves both the Verona and the nearby Fitchburg area with ALS delivery services.

During the study, it was determined that the existing location was ideal for the new station. However, the existing station needed to remain in use during construction and still allow the best orientation for the new station to serve the community in the future.

The new station was placed to allow the apparatus bays in the existing station to re-main in use until the new station was complete, while the administration offices were relocated to trailers on site, allowing for continued 24/7 response throughout construction.

The architectural design was the result of numerous public presentations and open house forums throughout the design process. Community leaders stated that they wanted this new station to be, "...the standard of construction that we wish to see as the community grows."

This project was bid in April of 2013 and opened to the public July 1, 2015.



Project Highlights:

- Architectural Design
- Master Planning
- Interior Design

Spring 2023

\$8.7 Million Cost of Work

Todd Prafke
City Administrator
(507) 934-0663
toddp@saintpertermn.gov

ST. PETER FIRE STATION

St. Peter, MN

The City of St Peter, MN hired Five Bugles Design to design a new state of the art fire station in St. Peter, MN. This 23,100 square foot facility will be funded using USDA borrowing and paid for through a community referendum supporting a .5% sales tax. The facility was designed with five bays in the base bid and a sixth bay as an alternate. Other various alternates are included in the design such as ice-melt on the apparatus bay aprons, concrete in lieu of asphalt aprons, fluid applied flooring in the apparatus bays and four-fold doors in lieu of standard overhead doors.

The department is a volunteer department and took on the process of decontamination by designing those features into their new facility.

This includes PPE storage, gear laundry, decontamination hallways and decontamination toilet/showers with steam capabilities. Training within the station was a requirement of the department and a Training Tower sits proudly between all the apparatus bays on the front elevation as well as a training room within the administrative areas.

The training room can accommodate up to 50 personnel sitting at tables and chairs as well as a kitchen that is large enough to support various community events. The remaining rooms in the facility include various offices for ranked department members, a conference room, maintenance offices and a staging area.

The facility bid in June 2022 with construction beginning that summer and completion occurring in the fall of 2023.



Station Highlights:

- 37,000 Square Feet
- Training Center
- Living Quarters
- EMS
- LEED Gold

\$4,800,000 Cost of Work

New Construction

2010

Scott Owen, Fire Chief
City of Marshfield Fire Department
412 East Fourth Street
Marshfield, WI 54449
715.486.2090

MARSHFIELD FIRE & EMS STATION

Marshfield, WI

Steve Gausman and Robert Krzyzanowski assisted the Marshfield Building Committee in reviewing fifteen various sites within the stipulated geographical area. Space Programming sessions were conducted with the Building Committee over multiple dates. As a result of this study, Marshfield Fire and Rescue decided to move ahead with a 37,000+ SF facility, completed on schedule and under budget. The proposed design was constructed as an urban infill project on a downtown site that accommodates several sustainable features. The City of Marshfield is a leading proponent of sustainability and achieved a LEED Gold certification for this facility.

The Architectural Design was the result of numerous public presentations and open house forums during both programming and schematic design phases of the project.

Additionally, the building's design further resulted from meetings with the local Historical Society to incorporate design elements of past Marshfield buildings. Public Relations techniques included interviews on Public Radio.



Station Highlights:

- 21,240SF
- Career Station: Fire & EMS
- 1 Drive-through Fire Apparatus Bay
- 3 Fire Apparatus Bays
- 4 EMS Apparatus Bays
- Training Center
- Training Tower
- Exercise room
- 8 dormitories
- Kitchen
- Dining Room

\$3,800,000 Cost of Work

New Construction

2016

David Wegener, Fire Chief
Ashland Fire Department 300
Stuntz Ave
Ashland, WI 54806
715.682.7052
dwegener@coawi.org

ASHLAND FIRE & EMS STATION

Ashland, WI

After working with Five Bugles Design for over 12 years on multiple studies, the City of Ashland passed a resolution to design and build a new central fire station.

Located on the Chequamegon Bay of Lake Superior, the Ashland Fire Department serves Ashland, as well as numerous other surrounding areas to which they provide mutual aid. This location also requires high levels of specialty training including hazmat and ice rescue. Because of this, a large emphasis was placed on the design to incorporate a training room, exercise room, training tower and a mezzanine space that can be used for training purposes.

The site selected for the new station, though ideal for response times, limited the size and configuration of the station. Due to these restrictions, only one apparatus bay was created as a drive through. With the other seven bays as single access bays, the workshop, compressor, a decon toilet room, decon laundry room, and gear turnout were all able to be placed along the back wall of the bays.

Bidding for this project was in the Spring of 2015 with final completion and Owner occupancy the following year.





SUPERIOR FIRE STATION
12.13.2017
SUPERIOR, WI

PROJECT TYPE
New Fire Station Replacement
Fire Station 2 Renovations
Fire Station 2 Concrete Repairs

LOCATION
Superior, WI

CITY OF SUPERIOR FIRE DEPARTMENT
SUPERIOR FIRE DEPARTMENT

New Headquarters

The City of Superior hired the LHB/Five Bugles Design team to design the City's new Central Fire Station. The building is 20,000 SF split between Administrative and Apparatus areas.

The Apparatus spaces include 5 large apparatus bays, 4 of those being drive thru bays. A 3 bay vehicle storage area is provided for the Fire Chief and Fire Inspector vehicles. Directly adjacent to the Apparatus bay is a 600 square foot Maintenance area, Gear turnout space with 18 lockers, a Decon Area, a SCBA work room and storage area for medical equipment. A three-story hose tower is included for training use and hose drying.

The Administration area includes public toilet rooms and a large training room for 50 pp that can be used for public use in addition to the Fire Department. Other Administrative spaces include private offices for the Fire Chief, the Fire Inspector, the Captain, and the Battalion Chief. The Battalion chief office includes a connected sleeping room. There are 4 sleeping rooms and 3 toilet/shower rooms for staff to use during their shifts. A large kitchen, dining area, dayroom, resource library, laundry and exercise room complete the living areas for staff.

Fire Station 2 Renovations & Concrete Repair

LHB worked with the City to complete permit drawings for the interior renovation of Fire Station 2 which included kitchen, sleeping quarters, accessible toilet/shower, and office. Following issuing of the documents for plan review, LHB worked with City staff to address questions during construction on the phased scope.

Several years later, LHB prepared a site observation of the existing settling apparatus bay slab and made recommendation for replacement and drainage improvements. LHB again addressed contractor questions through construction.



PROJECT TYPE
City Hall/Fire Hall
Improvements

LOCATION
Sandstone, MN

CITY OF SANDSTONE

SANDSTONE CITY HALL / FIRE HALL IMPROVEMENTS

The Sandstone City Hall experienced poor distribution of heat; with some rooms too hot while others were too cold. LHB provided individual room control of heating and cooling to leased office spaces in the building as requested by the City through:

- Replacing the existing hot water boilers with high-efficiency units.
- Replacing fin-tube radiators and piping to provide units properly sized for each room and three-way valves to provide individual control at each unit.
- Adding motorized dampers in existing ductwork to allow each room to control quantity of condition (cooled) air being delivered.
- Replacing HVAC control systems.
- The walls, ceiling and floor finishes were restored after improvements were completed.

The Sandstone Fire Hall suffered concrete masonry wall unit problems of cracking, joint failure, and paint failure as well as rusting hollow metal doors, frames, and windows. High humidity in the warmer months of the year and non-insulated walls contributed to the interior issues.

LHB prepared design documents for the fire hall improvements that included:

- Replacing exterior windows and main doors.
- Providing exterior masonry repair and tuck-pointing.
- Replacing exterior masonry wall paint finishes.
- Adding wall furring and insulation to interior face of exterior walls in the office area.
- Adding a new makeup air system and dehumidification units for the apparatus bay.
- Adding a CO/NO₂ gas detection system for the apparatus bay.
- Adding a condensing unit to the existing forced air furnace serving the office portion of the building.



PROJECT TYPE
Fire Facility

LOCATION
Cloquet, MN

CLOQUET AREA FIRE DISTRICT

FIRE STATION/HEADQUARTERS BUILDING

The Cloquet Area Fire District is the first independent fire and ambulance special district in Minnesota providing fire suppression to the communities of Cloquet and Scanlon and the Township of Perch Lake.

LHB and Five Bugles Design facilitated a predesign process for the District to determine the appropriate strategy for consolidating two existing fire stations into one new state-of-the-art station strategically located in the District.

Our work included evaluations of the current facilities, programming, space planning, developing building design concepts in a charrette forum, site survey, site analysis, wetland delineation and cost analysis. In addition, our team facilitated discussions with public finance experts to help the District understand their options for financing a project under the special legislative authorization.

Subsequently, our team designed a 38,000 SF, two-story headquarters fire station that includes apparatus bays, administration, and support areas on the first floor and fire fighters living quarters on the second floor. The design consists of 13 apparatus bays which can be included as alternates or future as the budget allows. The design progressed through the Design Development Phase where it was placed on hold pending funding.



PROJECT TYPE
New Fire Station

LOCATION
Duluth, MN

SIZE
24,040 SF

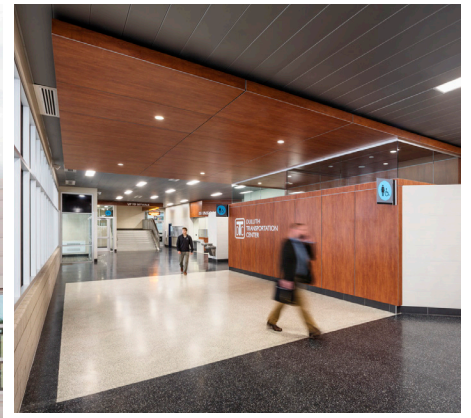
COST
\$ 6.9 M

DULUTH AIRPORT AUTHORITY AND THE MINNESOTA AIR NATIONAL GUARD (MNANG)
**MNANG AND DULUTH INTERNATIONAL AIRPORT
JOINT AIRFIELD FIRE STATION**

LHB, in conjunction with RS&H, provided services for a new 24,040 SF airfield fire station. LHB was responsible for the architectural, structural and electrical design on this \$6.9 million facility, which supports the Minnesota Air National Guard's aircraft fire fighting and emergency services mission and the Duluth International Airport.

The facility, constructed in two phases, provided an adequately sized and modern facility within prescribed distances and response times to airfield incidents.

The building contains an Alarm Center, Apparatus Rooms, Training Facilities, Living Quarters, Dining Room, Administrative Area, Maintenance, and Support Areas. State-of-the-art communication and security systems were installed. The facility complies with all current Department of Defense design guidelines and force protection standards.



PROJECT TYPE

New Transit Center & Parking Garage

LOCATION

Duluth, MN

DULUTH TRANSIT AUTHORITY

DULUTH TRANSPORTATION CENTER

For years, the DTA hoped to relocate their downtown transit center to improve safety, accessibility, and service. The creation of the Duluth Transit Center (DTC) moved the center to a less busy street so that passengers would not be crossing in front of traffic to access the center and creates a multimodal hub that is accessible for other modes of transit.

The new location became a catalyst for other opportunities including creating additional, downtown, hourly and contract parking, improving the Northwest Passage skywalk (a critical connection between downtown and the tourism-focused Canal Park area), and establishing a transit center that serves multiple modes of transportation including bus riders, shuttles, cabs, bicycles, pedestrians, and future rail service. The DTC houses a Duluth Police substation for added downtown security and provides the DTA with rental space income opportunities.

In association with Mortenson Construction, LHB provided design services for this \$28.9 million design-build facility that included a parking structure, skywalk, and passenger terminal. The project required careful phasing to maintain accessibility to the Duluth Entertainment Convention Center (DECC) and the Downtown Duluth area. The LHB/Mortenson team worked with the DTA, DECC, City of Duluth, and private investor Inreit for this project.

The design works within the limitations of the post-tensioned concrete structure, meets the historic design regulations on the site, and supports the bus schedule coordination needs to ensure efficient operations for the DTA.

Project Approach, Scope of Work and Schedule

Project Approach

Wendel Companies, home to the award-winning Five Bugles Design (FBD) and Mitchell Associates Architects (MAA) with our exclusive teaming partner LHB, has reviewed the City of Superior's Request for Qualifications for professional design services for the design, bidding, construction management, and construction inspection for two new fire stations.

We understand that the city has been reviewing the possibility of remodeling these facilities or replacing them with new facilities for the last several years. We are prepared to work with the city's project management team to provide a review of the conceptual design, complete bidding documents, and ultimately construct new state-of-the-art facilities. Our team is built to do this, and we are excited to offer our services to the City of Superior.

As you will see in our proposal, our team has the experience required to lead this exciting project. We are extremely excited about recently acquiring Mitchell Associates Architects, a leader in emergency services design that rivals our own experience here at Five Bugles Design. Five Bugles Design and Mitchell Associates Architects have formed a relationship over the last few years due to our commonality, designing state-of-the-art functional emergency service facilities. Now, we are one team with over a dozen individuals who have dedicated their careers in architecture to emergency services design full time. Staff Highlights include:

Our **director of emergency services and project leader, Robert Krzyzanowski**, has completed construction documents/construction administration on over 60 public safety facilities in his career, on top of over one hundred studied.

As a **licensed Architect (WI) and Interior Designer, Laura Eysnogle** has enjoyed working on emergency services facilities in twelve (12) states across the country, sharing all knowledge, challenges, and solutions from each department with the next department as our project leader.

Bob Mitchell has been designing fire stations for over thirty years, with 195 projects addressing more than 330 public safety facilities. Thirty of these have won national awards, including seven gold prizes.

Our **senior emergency services specialist, James Schmidt**, has extensive experience as an owner representative for three fire/EMS stations and one regional training center and assisted in the conceptual or final design of over seventy (70) emergency services facilities across the country.

Our partnership with LHB continues the relationship that completed the headquarters facility in the City of Superior a few years ago. At LHB, design excellence is embedded in all their work. Their commitment to sustainability began more than 30 years ago with a focus on design for energy conservation, resource efficiency, and occupant health. With offices in Duluth and Superior, LHB brings regional difference to the project. Staff Highlights include:

Michael Fischer, AIA, LEED AP, Project Principal, has more than 36 years of experience as project principal, project manager, project designer, and project architect on planning, urban design, educational, commercial and governmental projects.

Anne Porter, CID, LHB Team Leader/Interior Architecture, has an authentic commitment to your project, as a proud resident of Superior, WI. Her involvement on the City of Superior Planning Commission, Redevelopment Authority, and Joint Review Board brings a personal understanding of the city processes and key project stakeholders.

Dan Shaw PE, CCCA, LEED AP, will provide Civil Engineering and Site Design for the team for design and quality checks utilizing his knowledge.

Alec Ashton PE, CDT, FPE, is a Mechanical and Fire Protection Engineer and has experience working with local and federal government clients on projects ranging from assessment to replacement of fire protection and mechanical systems.

Austen Bryan, PE, works with LHB's Energy & Industry group managing design teams to provide engineering services with a focus in pipeline and pump station design.

Heidi Bringman, PLA, LEED AP BD+C, CDT, CCCA, MWPCP, has been a licensed landscape architect for more than 20 years and has a deep understanding of public engagement, site master planning, and the design of trails, parks, and public spaces.

Looking through the city's objectives, we see you have extensive expectations, which our team strives for. You require a building that belongs in the City of Superior's unique environment. Your fire staff are not only employees of the city, but a majority of them also call the City of Superior home, which is important. A significant part of a project's success is incumbent upon the expectations established early on. Our team hopes to assist the city in creating a vision that everyone can be proud of moving forward and keep the community up to speed on progress.

Our clients use words like functionality, durability, energy efficiency, and comfort when talking about our team's designs. We take pride in function over fancy but can also provide a superior facility design that will serve the city without breaking the budget and while meeting the various local and state codes.

Wendel is a one-stop shop if you so desire. We offer architecture, engineering, energy efficiency, and construction management under one roof. As our proposal shows, we offer construction management on top of our already successful design capabilities. We can offer all of these services to the city without needing multiple partners. For this project, LHB is our partner, with NCE as our structural sub-consultant. NCE, based out of Duluth, and our teams have exclusively worked on emergency services facilities for the last 14 years since FBD's inception. Both firms have the expertise and experience to deliver an unparalleled project to the city that will be a permanent building for generations to come.

We have reviewed the entire proposal and scope of services as indicated in the RFQ and are prepared to complete those tasks. We look forward to the opportunity to work closely with the City of Superior's project team and to turn your dreams into a reality.



Wendel's award winning public safety design team

FBD/MAA and LHB understand the City of Superior is seeking qualifications from interested architectural firms to be part of a team to perform professional services for the design of the new Fire Station. Design services include landscape design, architectural design, interior design, site civil, plumbing, mechanical, electrical, and telecommunication engineering services.

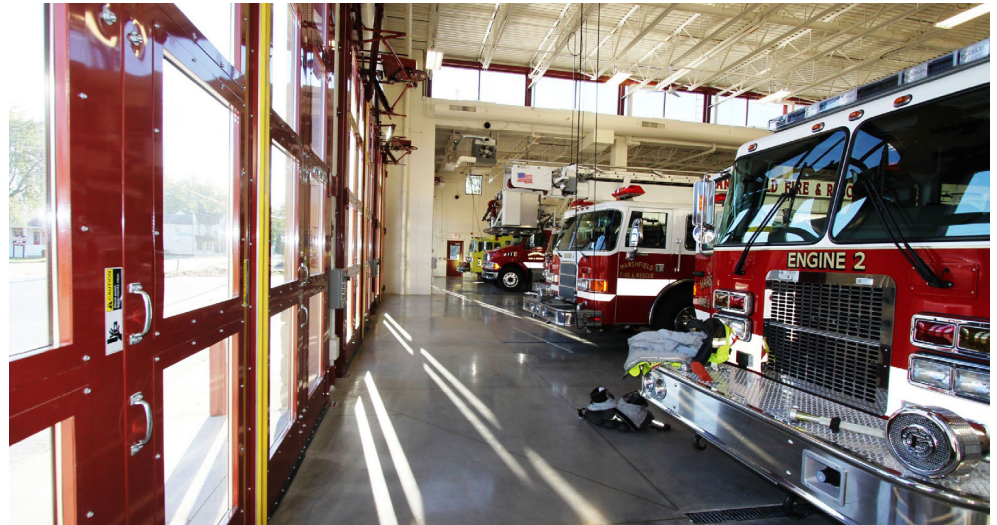
FBD and MAA have performed this service for departments across the country. Ultimately, we believe the path listed below is a winning approach to help guide local leaders through this challenging process.

PHASE 1: Planning

PHASE 2: Design

PHASE 3: Bidding

PHASE 4: Construction Administration



Our first priority is for the team to review the prior decisions before developing more detailed documentation. It is important to revisit that work effort and bring any conceptual plans up to date. We look forward to working closely to develop this project in the most beneficial manner for the Fire Department in the City of Superior. The following are specific tasks that we feel are necessary to take your project through Planning and Design Development and Construction Document phases.

Task A: Revisit the Program

REVISIT THE PROGRAM: We use programming as a tool to learn how your department functions and operates. We use our experience that we have learned designing/constructing over 150 emergency services facilities to build upon what you have already accomplished. Our team will review the existing programming and re-evaluate to accurately assess the space needs using our unique immersion process.

Task B: Conceptual/Master Plan

CONCEPTUAL/MASTER PLANNING: Once programming is completed, our team will review that data from Task A and prepare revised conceptual options. Costs will be associated to these options and reviewed with the team. We will then review these efforts with project management and all stakeholders seeking comment with the goal of customizing the design effort to your departments and its specific operational procedures and concerns.

Task C: Multiple Design Options

MULTIPLE DESIGN OPTIONS: Our team will develop multiple options complete with cost estimates and pros and cons, including recommendations on sustainability considerations per LEED standards.

Task D: Development of Selected Option

DEVELOPMENT OF SELECTED OPTION: We will develop a selected option to a Conceptual Design Level complete with a more detailed cost estimate for presentation to the City.

Task E: Schematic Design—30% Completion

PHASE 2 DESIGN

1. Evaluate potential building system options (architectural/civil/structural/mechanical/electrical/etc.) and perform a very high level design assessment to confirm their feasibility.
2. Refine the conceptual floor diagram and site plan preferred alternatives based on the above assessments.
3. Prepare a high-level, square foot-based budget opinion of probable project costs.
4. Meet with owner to review preferred plans, building system options and budget costs and determine the next course of action.
- * 5. Coordinate the services of a qualified firm to prepare a preliminary geotechnical investigation to assess preliminary building addition foundation system design requirements. Detailed geotechnical investigation will be prepared prior to the start of final design.
- * 6. Coordinate the services of a qualified surveyor to perform a preliminary topographic survey of the site and prepare a base map for use in preliminary design. Detailed topographic and utility service survey will be prepared prior to the start of final design.
- * 7. Coordinate the services of a wetland professional to perform wetland delineation that meets federal and state regulations determining wetland boundaries.

* Costs associated with these services will be coordinated by our firm but paid for by the client with no mark-up. We understand that those services were requested in the RFP, however our preference is to keep these services as a third-party recommendation, eliminating any possibility of collusion.

**Task F: Design Development Phase – 60%
Completion**

1. Prepare a Basis of Design Document for the City's review and concurrence including space program requirements, building code and system design requirements, site access, circulation and parking requirements, utility service requirements, energy efficiency and sustainability requirements, etc.
2. Conduct preliminary discussions with utility service providers (electric, gas, water, sanitary sewer, etc.) to confirm service load requirements.
3. Perform building and zoning code review and meet with local building officials to confirm concurrence with building and site requirements.
4. Advance the preferred building and site plans to the approximately 10% complete, preliminary design stage and prepare the following drawings:
 - Site layout plan
 - Architectural floor plans
 - Two colored, computer generated building renderings
5. Refine assessment of potential building architectural, structural, mechanical, electrical systems.
6. Evaluate potential energy savings funding options and incentives.
7. Prepare preliminary design level opinion of probable project costs.
8. Meet with the City to review preliminary building and site plans, potential building system requirements and preliminary design budget costs and determine the next course of action.

**Task G: Construction Document Phase– 90%
Completion**

1. Prepare updated building code review and code compliance drawings showing exiting requirements, fire separations, etc.
2. Attend eight (8) bi-weekly design meetings during an assumed four (4) month design duration with the City to review and coordinate the progress of design.
3. Based on the approved preliminary design report, prepare Construction Drawings and Technical Specifications suitable for competitive bidding that describe the size and character of facility systems and materials for each of the following disciplines:
 - Architectural
 - Structural
 - Civil
 - Landscaping
 - HVAC
 - Plumbing
 - Electrical
4. Refine the current 3D building perspectives based at the completion of the 30% design completion stage.
5. Present final Construction Documents to the City for sign-off and determine the next course of action for this project.

PHASE 3 BIDDING

Task H: Bidding Services

1. Attend pre-bid meeting/site walk-thru and issue meeting minutes.
2. Process RFI's and assist with assembling addendum.
3. Attend a meeting with Owner to review bid recommendations and determine selected contractors for each bid package.

PHASE 4 CONSTRUCTION ADMINISTRATION

Task I: Construction Administration Services

1. Construction Kick-Off Meeting

- The construction phase will be initiated by a kick-off meeting between the owner, the design team, the project coordinator and the successful Contractors. This meeting will set the parameters for the construction phase process and the expectations for all aspects of the work.

2. Construction Review and Observation

- Attend twenty (20) bi-weekly construction meetings during an assumed ten (10) month construction duration with the owner, the design team, the project coordinator and the successful Contractors to review and coordinate the progress of construction.
- Perform periodic, technical site visits at intervals appropriate to the stage of the Contractor's operations to determine if the project is being constructed in general conformance with to the construction documents and the design intent. The following technical site visits have been assumed for an approximate ten (10) month construction duration:
 - 20 architectural site visits
 - 2 Civil site visits
 - 1 structural site visits
 - 2 mechanical site visits
 - 2 electrical site visits
- Site visit reports will be prepared and submitted to the Owner and Contractors, indicating the work performed that day, weather conditions, and noting any significant observations or decisions made while on site

3. Requests for Information and Design Support

- Record and respond to Contractor Requests for Information (RFI).
- Provide design responses to unanticipated or changed conditions.
- Provide interpretation and clarification of design intent and make recommendations to the City regarding proposed changes.

4. Shop Drawings and Submittals

- The design team will work closely with the Project Coordinator to provide shop drawing and submittal review on a timely basis.
- Shop drawings and submittals will be reviewed for general conformance with the construction documents and the design intent.

5. Contractor Pay Applications

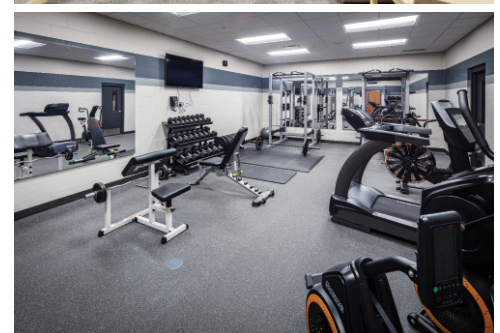
- Review and certify the Contractor's monthly applications for payment and make appropriate recommendations to the City.

6. Change Proposal Requests and Change Orders

- Prepare additional work proposal requests, change order documentation and supplemental design documentation.

7. Punch List

- Assist the City and project coordinator in determining the dates of Substantial Completion and Final Completion and prepare a punch list of outstanding contractor items at Substantial Completion.



Required Forms

6. SubConsultants Listing (Must be submitted with Qualifications.)

Fire Stations 2 and 3

The undersigned agrees to employ the following listed **subConsultants** for the following enumerated classes of work and not to alter or add to such list without the written consent of the City of Superior, WI. Use separate sheet as necessary.

	<u>SUBCONSULTANT</u>	<u>CLASS OF WORK</u>
1)	LHB	MEP and Civil Engineering
2)	Northland Consulting Engineers	Structural Engineering
3)		
4)		
5)		

Submitted by: COMPANY Wendel's Architecture, PC

ADDRESS 204 E. Grand Avenue, Suite 200, Eau Claire, WI 54701

COMPANY REPRESENTATIVE Robert W Krzyzanowski, Director of Emergency Services

7. **Addenda Acknowledgement** (Must be submitted with Qualifications)

Fire Stations 2 and 3

I/we hereby acknowledge receipt of the following addenda(s):

Addendum No. 1 Dated 10/15/2024
Addendum No. Dated
Addendum No. Dated
Addendum No. Dated

I/we further certify that no agreement has been entered into to prevent competition for said work and that I/we carefully examined the site where the work is to take place, and the plans, specifications, form of contract and all other contract documents.

I/we further agree to enter into the contract, as provided in the contract documents, under all the terms, conditions and requirements of those documents.

* If no addenda were issued, the consultant/firm shall so indicate and sign this document.

Wendel's Architecture, PC

Company



Robert W Krzyzanowski, Director of Emergency Services

Representative Signature

8. Qualification Evaluation Checklist

Owner: Wendel's Architecture, PC _____

Contact Person: Robert W Krzyzanowski, Director of Emergency Services _____

Address: 204 E. Grand Avenue, Suite 200 _____

City: Eau Claire _____ State: Wisconsin _____

Zip: 54701 _____

Telephone: (715) 832-4848 _____

Instructions:

1. When filling out the checklist check "YES" only to those services provided "in-house" by your firm (or prior experience of key personnel anticipated to perform a substantial amount of the project work) and check "SUB" for services you intend to subcontract out. List the subcontracting firm in the "Comments/Explanation" area.
2. Respondents are encouraged to add comments and to attach more detailed information where appropriate in response to checklist items. Such clarification can greatly assist the evaluation process. **Firms may include other information as they deem appropriate.**
3. Attach to this checklist any appropriate licenses, certification, degrees, or appropriate training that will assist in qualifying your firm for these services.
4. Consultant qualifications will be determined using this checklist along with the information provided as outlined in the "Requirements for Statement of Qualifications".
5. Firms are expected to answer "YES" to some of the checklist items, but not all of them.
6. False, inaccurate or misleading information shall be grounds for disqualification at any time during and after the selection process. When in doubt attach a detailed answer or call for clarification.

Yes	Sub	No	#	Question
			1.	How many years has your firm been engaged in the consulting business under the present firm name? 84 _____
<input type="checkbox"/>		<input checked="" type="checkbox"/>	2.	Has your firm ever failed to complete any work awarded to you? Comment/Explanation:

Yes	Sub	No	#	Question
<input type="checkbox"/>		<input checked="" type="checkbox"/>	3.	Has your firm ever defaulted on a contract? Comment/Explanation:
<input type="checkbox"/>		<input checked="" type="checkbox"/>	4.	Has your firm ever had claims filed for errors and omissions or been sued for services you provided? Comment/Explanation:
<input checked="" type="checkbox"/>		<input type="checkbox"/>	5.	Is your firm willing to provide (at no cost to the City) an on-site presentation to the City regarding your firm's qualifications? Comment/Explanation:
<input checked="" type="checkbox"/>	<input checked="" type="checkbox"/>	<input type="checkbox"/>	6.	Does your firm have experience developing construction costs and ongoing maintenance costs for recommendations made? Please provide examples and actual outcomes. Comments:
<input checked="" type="checkbox"/>	<input checked="" type="checkbox"/>	<input type="checkbox"/>	7.	Does your firm possess all of the necessary licenses and credentials to perform the work as specified? Is your firm licensed in Wisconsin? Comment/Explanation:

9. Reference Form

Applicant Firm Name: Wendel Architecture, PC
Contact Person: Robert W Krzyzanowski, Director of Emergency Services
Address: 204 E. Grand Avenue, Suite 200
City, State, and Zip Code: Eau Claire, WI 54701
Telephone: (715) 832-4848

Reference #1

Owner or Company Name: Lakeside Fire-Rescue
Contact Person: Randall L. Pickering, Fire Chief
Type of Service(s) Provided: Architecture, Electrical and Mechanical Engineering
Calendar Year(s) of Service(s) Provided: 2023 - in progress
City, State, and Zip Code: 617 N Main St Edgerton, WI 53534
Telephone: 608) 332-9462 (cell)

Reference #2

Owner or Company Name: Green Bay Fire Department
Contact Person: Matthew Knott, MS, EFO, CFO Fire Chief
Type of Service(s) Provided: Architecture
Calendar Year(s) of Service(s) Provided: 2022 - in progress
City, State, and Zip Code: 501 S Washington Street, Green Bay, WI 54301
Telephone: (920) 448-3278

Reference #3

Owner or Company Name: Baraboo Area Fire & EMS District
Contact Person: Kevin G. Stieve, Fire/EMS Chief
Type of Service(s) Provided: Architecture, Electrical and Mechanical Engineering
Calendar Year(s) of Service(s) Provided: 2022 - in progress
City, State, and Zip Code: 135 4th St, Baraboo, WI 53913
Telephone: (608) 356-3455

8. Qualification Evaluation Checklist

Owner: LHB, Inc.

Contact Person: Michael Fischer, Vice President

Address: 63 East Second Street, Suite 500

City: Superior State: Wisconsin

Zip: 54880

Telephone: 715.392.2902

Instructions:

1. When filling out the checklist check "YES" only to those services provided "in-house" by your firm (or prior experience of key personnel anticipated to perform a substantial amount of the project work) and check "SUB" for services you intend to subcontract out. List the subcontracting firm in the "Comments/Explanation" area.
2. Respondents are encouraged to add comments and to attach more detailed information where appropriate in response to checklist items. Such clarification can greatly assist the evaluation process. **Firms may include other information as they deem appropriate.**
3. Attach to this checklist any appropriate licenses, certification, degrees, or appropriate training that will assist in qualifying your firm for these services.
4. Consultant qualifications will be determined using this checklist along with the information provided as outlined in the "Requirements for Statement of Qualifications".
5. Firms are expected to answer "YES" to some of the checklist items, but not all of them.
6. False, inaccurate or misleading information shall be grounds for disqualification at any time during and after the selection process. When in doubt attach a detailed answer or call for clarification.

Yes	Sub	No	#	Question
			1.	How many years has your firm been engaged in the consulting business under the present firm name? <u>58</u>
<input type="checkbox"/>		<input checked="" type="checkbox"/>	2.	Has your firm ever failed to complete any work awarded to you? Comment/Explanation:

Yes	Sub	No	#	Question
<input type="checkbox"/>		<input checked="" type="checkbox"/>	3.	Has your firm ever defaulted on a contract? Comment/Explanation:
<input checked="" type="checkbox"/>		<input type="checkbox"/>	4.	Has your firm ever had claims filed for errors and omissions or been sued for services you provided? Comment/Explanation: <small>In the last 5 years, LHB has been involved in one litigation. In October 2020, LHB received a Third Party Complaint from an individual alleging liability for physical injuries he sustained as a subcontractor to the General Contractor at a project site. The individual sued LHB and the General Contractor in federal district court. The litigation was resolved through a voluntary mediated settlement in which LHB was released from liability without a determination of responsibility or admission of wrongdoing.</small>
<input checked="" type="checkbox"/>		<input type="checkbox"/>	5.	Is your firm willing to provide (at no cost to the City) an on-site presentation to the City regarding your firm's qualifications? Comment/Explanation:
<input checked="" type="checkbox"/>	<input type="checkbox"/>	<input type="checkbox"/>	6.	Does your firm have experience developing construction costs and ongoing maintenance costs for recommendations made? Please provide examples and actual outcomes. Comments:
<input checked="" type="checkbox"/>	<input type="checkbox"/>	<input type="checkbox"/>	7.	Does your firm possess all of the necessary licenses and credentials to perform the work as specified? Is your firm licensed in Wisconsin? Comment/Explanation: <small>LHB holds a Certificate of Authorization to perform Architectural or Engineering services in the state of Wisconsin. In addition, we have Architects, Engineers and Land Surveyors licensed to perform these services.</small>

9. Reference Form

Applicant Firm Name: LHB, Inc.
Contact Person: Anne Porter, CID, CDT
Address: 63 E Second Street, Suite 150
City, State, and Zip Code: Superior, WI 54880
Telephone: 218.249.7146

Reference #1

Owner or Company Name: City of Sandstone
Contact Person: Kathy George, City Administrator
Type of Service(s) Provided: Arch., Mech., Elec., Civil Eng., Landscape Arch.
Calendar Year(s) of Service(s) Provided: 2018 - 2020
City, State, and Zip Code: Sandstone, MN 55072
Telephone: 320.245.524

Reference #2

Owner or Company Name: Cloquet Area Fire District
Contact Person: Jesse Buhs, Fire Chief
Type of Service(s) Provided: Arch., Mech., Elec., Civil Eng, Landscape Arch.
Calendar Year(s) of Service(s) Provided: 2017 - 2019
City, State, and Zip Code: Cloquet, MN 55720
Telephone: 218.499.4258

Reference #3

Owner or Company Name: City of Grand Marais
Contact Person: Michael Roth, City Administrator
Type of Service(s) Provided: Arch., Mech., Elec., Civil, and Struct. Eng., Landscape Arch.
Calendar Year(s) of Service(s) Provided: 2015 - 2024
City, State, and Zip Code: Grand Marais, MN 55720
Telephone: 218.387.1848



**Five Bugles
Design™**

+



**Mitchell Associates
Architects**

Wendel's award winning public safety design team

Alternate Proposal — Master Builder Approach



Master Builder

Innovation Meets Quality in Planning and Design Approach

Wendel's Master Builder® approach is an alternative professionally led delivery method. As a design and construction company, we know how important it is to keep both perspectives in all phases of a project. We integrate constructability and schedule rigor of a Construction Manager into design and design thinking into construction. We call this our Master Builder® mindset because it is just that — no matter the delivery model our approach is integrated.



The Master Builder® approach addresses the main challenges to project delivery for both our public and private clients. In the place of separate design and construction teams, a Master Builder-led project utilizes

Wendel's design and construction competencies, all under one roof. It also provides the owner with a trusted adviser who acts as the single point of contact over the course of the project. This adviser works closely with the owner, keeping them apprised of the project's progress in all areas through each step from pre-design through construction. This streamlined form of communication not only increases project efficiency, but creates a real relationship of trust between the firm and owner that will only continue to build: the teams that work on your project and the leaders who become your trusted advisers commit to each project from start to finish. The resulting consistency and familiarity are key to a smooth project experience.

Streamlined communication is just one of the ways Master Builder improves on traditional project delivery models. In traditional models, construction personnel and contractors are brought in after the design process to execute the construction. A Master Builder project brings design and construction personnel into the process with the owner from the very beginning, and we have found this to be incredibly valuable. Feedback on constructability, schedule and budget provided during the design process can greatly impact the project's efficiency and bottom line, making the triple constraint easier to balance throughout the entire project.

Use this QR code to learn more about the Master Builder process.



Traditional vs. Master Builder



