



FULL CIRCLE FIBER PARTNERS

OPERATORS SERVING OPERATORS

VISION, MISSION, AND VALUES



VISION

Constructing Tomorrow's Infrastructure Today.

MISSION

We are operators serving operators: catalyzing transformation through shared values.



OUR VALUES

1. SAFETY

Safety is a fundamental priority in everything we do because we care about the well-being of our team members and the community around us.

2. QUALITY

We uphold our commitment to quality by ensuring that we get things right the first time, take pride in our work, and hold ourselves accountable.

3. CUSTOMER FOCUSED

Our focus on our customers means that we follow through on our promises, maintain honesty and transparency, take ownership of challenges, and treat their business and customers with respect.

4. COMMITMENT TO OUR PEOPLE

Our unwavering commitment to our people ensures that we create a place where folks want to work, where jobs are fulfilling, individuality is respected, employees' voices are heard, and professional development is prioritized.

5. INNOVATION

Our operating culture encourages and rewards new ideas and practices that improve safety, quality, efficiency, customer satisfaction, and our employee experience.

WE ARE OPERATORS SERVING OPERATORS:



We are the preferred provider

CABLE



End-to-End Network Solutions: We offer end-to-end network solutions, from design and engineering to construction, emergency restoration, and project management.

Trusted Leadership: Our leaders are industry veterans who have specialized in designing, building, and activating cable and telecommunications infrastructure, driving growth and innovation.

TELECOM & TRANSPORT



Legacy and Evolution: Our legacy began with building out one of the first cable networks fifty years ago. Now, as Full Circle Fiber Partners, we're uniquely positioned to enhance critical broadband infrastructure across the United States.

POWER & CO-OPS



DESIGN, ENGINEERING & PERMITTING



OUR LEADERSHIP TEAM



We understand our customers because we are operators serving operators

Drawing on decades of industry expertise, our trusted leadership team delivers high-quality solutions that are efficient, effective, and customer-centric, all while prioritizing safety.

CARL VOGEL

CO-FOUNDER & CHAIRMAN

Carl Vogel, the former CEO & President of Charter, is our Co-Founder and Executive Chairman. Carl is also an Executive Advisor to Mill Point Capital, our private equity investor.

WAYNE DAVIS

CO-FOUNDER & ADVISOR

Wayne Davis – a cable engineering industry veteran – is also one of our Co-Founders. Having provided over four decades of senior leadership to the nation’s cable industry, Wayne is a Key Advisor to Full Circle Fiber.

CHRIS MAY

CEO

Chris May brings more than 20 years of leadership experience in construction, planning, design, and installation operations to the table as Full Circle Fiber’s CEO.

WILLIAM “BILL” MILLER

COO

Bill Miller is a technical operations leader with over 35 years of experience in construction, planning, design, and installation operations. Mr. Miller’s tenure includes leadership roles in communication, fiber, and utility companies.

TOM BARNES

CFO

With over 20 years of experience in finance, IT, and operations, Tom Barnes serves as the CFO for Full Circle Fiber.

KEY SERVICE OFFERINGS



OSP ENGINEERING, DESIGN & CONSTRUCTION

ENGINEERING



- Fielding, Survey, Walkout
- OSP Fiber and RF Engineering
- Permitting, Traffic Control, Environmental, and Zoning Assessments and Applications
- Wi-Fi Access Point
- Project Closeout and Certification

UNDERGROUND



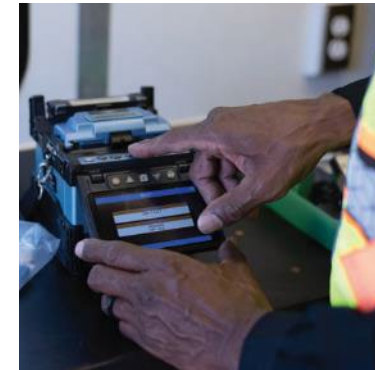
- Directional Boring
- Trenching
- Micro Trenching
- Joint Trench
- Plow
- Fiber and Coax Placement
- FTTx Deployment
- Tap, Amplifier, and Node

AERIAL



- Pole Setup and Attachments
- Strand Attachment
- Fiber and Coax Overlash
- ADSS
- Distributed Antenna Systems (DAS)
- Fiber and Coax Placement
- Tap, Amplifier, and Node
- Wireless Mesh Networks

SPLICING & ACTIVATION



- Fiber Optic and Coax Splicing and Termination
- Testing and Characterization
- Splicing matrix and documentation

EMERGENCY RESTORATION



- On-Call Construction Services
- Pole Replacement and Removal
- Storm Remediation
- Fiber Optic Splicing and Termination
- Coax Splicing and Termination

SAFETY FIRST



Safety is a fundamental priority in everything we do.

We care about the well-being of our team and the community around us.

Safety Huddles are part of our weekly team dynamics.

Safety training isn't just for onboarding, it's part of our ongoing development.

Safety is the first of our five core values.

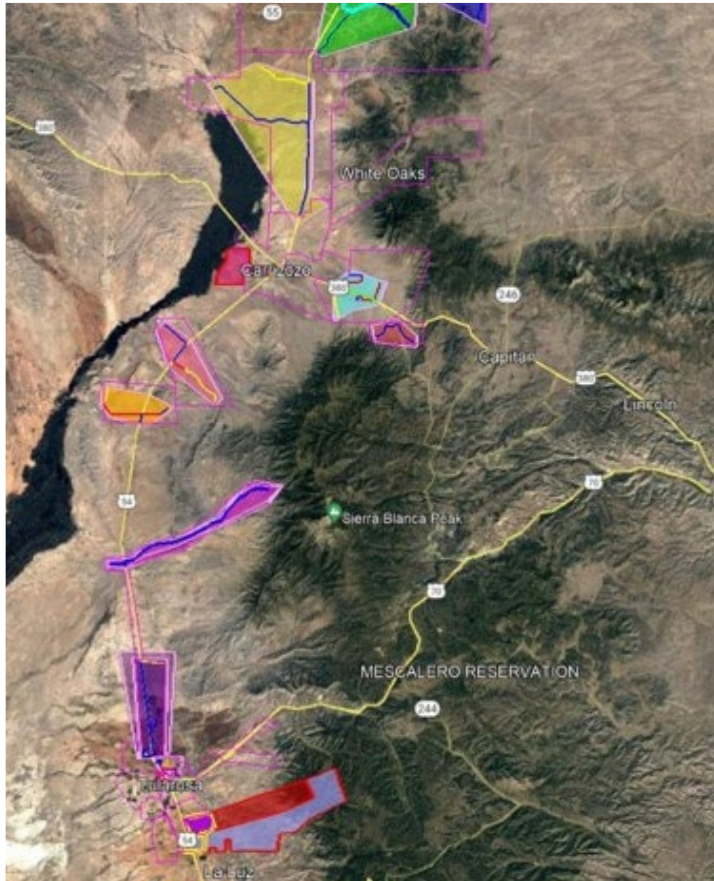
Our performance bonus scheme prioritizes safety.

QUALITY



As one of our core values, we are committed to promoting quality in everything we do. From design and engineering to construction and maintenance, quality is evident in every aspect of our work. Through rigorous quality checks, adherence to guidelines and safety protocols, we can ensure that every job is completed to the high standards our customers expect.

ENGINEERING, DESIGN & PERMITTING



Our entire operation leverages the full capabilities of our customers and operations design/engineering organization. Our teams help navigate complex regulatory hurdles by ensuring compliance with relevant regulations and standards applicable to grant programs.

Vigilant relationship management with various permitting agencies across the region is a key element of our operational footing and is a critical value-add to our customers.

KEY SERVICE OFFERINGS



PROJECT MANAGEMENT & REPORTING

Our organizations utilize a program management office (PMO) to ensure timely, accurate, and on-budget project execution.

Our professionals employ best practices aligned with the Project Management Institute's project management body of knowledge (PMBOK®) to achieve repeatable, consistent project management and process outcomes.



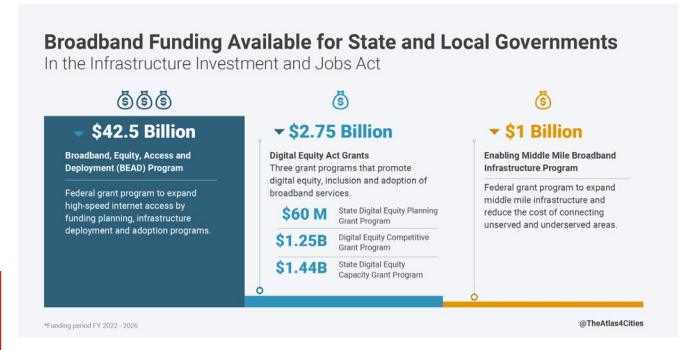
Reporting & Analytics

- We leverage a dedicated reporting and analytics team that places an emphasis on measurable production data.
- Construction tasks and activities, quality and performance data, as well as subcontractor, and customer financial data are all leveraged to ensure programs/projects run smoothly.
- Our teams utilize a consolidated data warehouse, ad-hoc and periodic reporting capabilities, all presented in real-time to our construction and management teams, enhancing accuracy and decision making.

VALUE ADDED SERVICE OFFERINGS



Grant writing and business development fueled by public-private partnerships

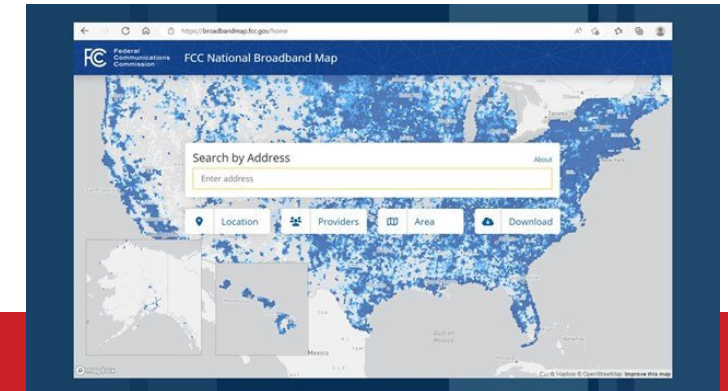


Phase 1

Getting Ready for BEAD

Ready

Start here to get your share of \$42.5 billion. Apply to one or many projects.



SUBJECT MATTER EXPERTS

- Public-private partnership program experts
 - RDOF (\$20B)
 - Middle Mile (\$1B)
 - Tribal (\$3B)
 - BEAD (\$42.5B)
 - CPF (\$10B)
 - ARPA (\$20B)
 - Reconnect (\$1.15B)
 - Various state funds
 - Custom projects

STRATEGIC ANALYSIS & REGULATORY POLICY SUPPORT

- Our mapping, regulatory policy, and broadband industry experts identify unserved and underserved areas of strategic interest
- Draft, write, and file submissions for grants, subsidies, and public-private partnership programs using proven templates that respond to each requirement and mapping resources trusted by funding agencies and their auditors

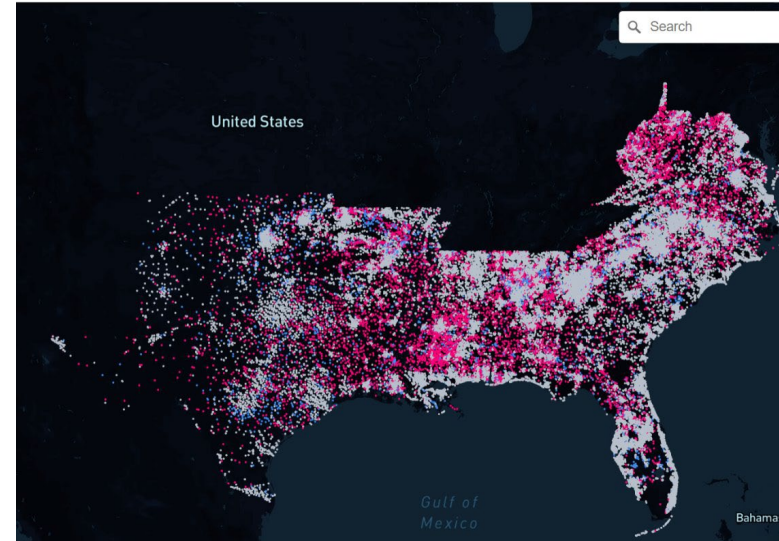
ADVOCACY & IMPLEMENTATION SUPPORT

- Offer support and expertise in responding to application questions and challenges
- Integrated engineering, design, project management, and construction services for awarded projects mitigates concerns about regulatory implementation deadlines and compliance reviews

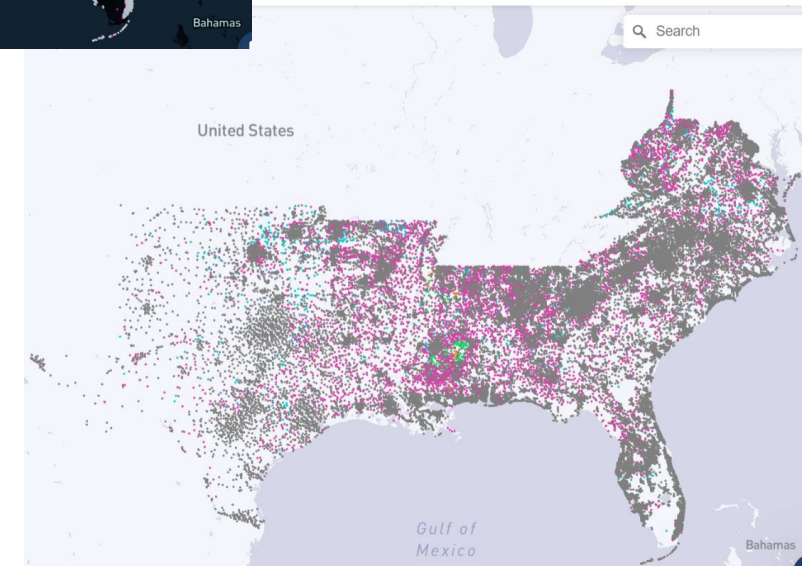
STRATEGIC GUIDANCE ON EXPANSION MAXIMIZING BROADBAND SUBSIDIES & PUBLIC-PRIVATE PARTNERSHIPS



- We use tools and resources trusted by grant administrators and their auditors. We can zoom between specific addresses (resi, biz, and anchor institutions) to larger regions to understand served, underserved, and unserved locations, as well as existing provider info (including speed tests), American Community Survey/Census data, etc. for the specific address(es) and geographic area (polygon) in which our provider customers are interested.
- We compare FCC Fabric Map data v. our proprietary mapping data.
- We build cost modeling – taking all the empirical data and auto feed into a grant application template.
- Our primary mapping partner is positioning itself with states, the FCC, and NTIA then to be the compliance expert for the funded BEAD projects.



Areas with pink are unserved areas, and blue is underserved. We can drill down to address levels to assess, and pitch meaningful expansion work.



Areas in pink are RDOF-funded areas, and green are ReConnect-funded areas. We can drill down to address levels to assess, and pitch meaningful expansion work.

OUR LOCATIONS



HEADQUARTERS



FULL CIRCLE FIBER PARTNERS

345 Inverness Drive South
Building A, Suite 100
Englewood, CO 80112

WEST REGION



MTC ENGINEERING

345 Inverness Drive South
Building A, Suite 100
Englewood, CO 80112



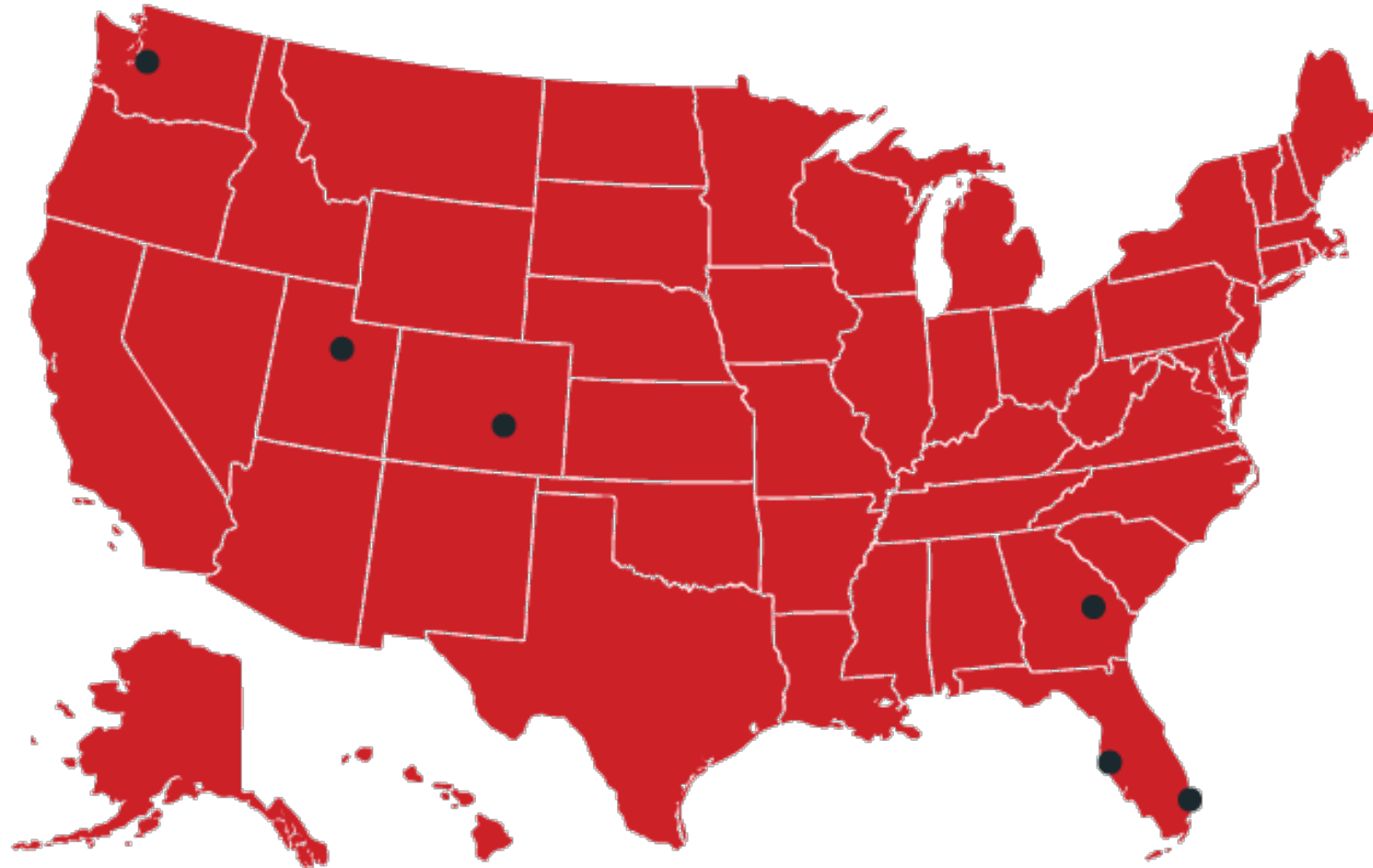
ROCKY MOUNTAIN WEST TELECOM

22 North Sheep Lane
Nephi, UT 84648



CONNECTA-TECH

16300 Christensen Road
Tukwila, WA 98188



SOUTHEAST REGION



KENNEDY BROADBAND

228 W Brazell Street
PO Box 2059
Reidsville, GA 30453



LIGHTSPEED CONSTRUCTION GROUP

14480 62nd Street North
Suite A
Clearwater, FL 33760



REEL BROADBAND

1371 West Newport Center Drive
Suite 103
Deerfield Beach, FL 33442



THANK YOU