

A&E PROPOSAL FOR

Wade Bowl Park Water Play Improvements Design Phase



Timothy L. Meyer, Principal Architect
tim.meyer@meyergroupduluth.com

MEYER GROUP ARCHITECTURE DULUTH
306 WEST SUPERIOR STREET, SUITE #1600
DULUTH, MN 55802
P: (218) 727-1330

MEYER GROUP ARCHITECTURE ASHLAND
1022 LAKESHORE DRIVE
ASHLAND, WISCONSIN 54806
P: (715) 292-6493

MEYER GROUP ARCHITECTURE MINNETONKA
12450 Wayzata Blvd, Suite #227
Minnetonka, MN 55305
P: (218) 727-1330



SUPERIOR

W I S C O N S I N

Living up to our name.

SEPTEMBER 10, 2024

TABLE OF CONTENTS

COVER LETTER_____	1
INTRODUCTION OF FIRMS_____	2 - 5
TEAM QUALIFICATIONS_____	6 - 11
RELEVANT PROJECTS_____	12 - 22
PROJECT APPROACH_____	23 - 25
ESTIMATED FEES_____	26 - 27
HOURLY RATES_____	28 - 31
SUBCONTRACTORS LISTING_____	32
ADDENDA ACKNOWLEDGMENT_____	33
DEBARMENT_____	34

REFERENCES

TIM PETERSON

City Administrator

(218)-879-3347

(F): (218) 879-6555

City of Cloquet

101 14th Street

Cloquet, MN 55720

tpeterson@cloquetmn.gov

Project: Cloquet Public Library

JAMES JEORKE

County Administrator / MIS Director

(218) 387-3687

Cook County

411 W. 2nd Street

Grand Marais, MN 55604

james.jeorke@co.cook.mn.us

Projects: Cook County Projects

ROB HURD

Construction Project Coordinator

(218) 730-4434

City of Duluth - Project Management Office

1532 W. Michigan Street

Duluth, MN 55806

rhurd@duluthmn.gov

Project: Duluth Public Library Restroom

Renovation & Lincoln Park Pavilion Renovation

KRIS ASPERHEIM

City Administrator / Clerk/Treasurer

(218) 389-6814

(F): (218) 389-6814

City Of Barnum - Administration Dept.

3842 Main Street

Barnum, Mn 55707

Kasperheim@Scicable.com

Project: Barnum City Office, Community Center,
And Liquor Store

MELANIE BENJAMIN

Chief Executive

(320) 532-7486

Mille Lacs Band of Ojibwe

43408 Oodena Drive

Onamia, MN 56359

Project: Mille Lacs Government Center

HOPE FAIRCHILD

City Administrator

(218) 547-5501

City of Walker

205 Minnesota Ave. W

PO Box 207

Walker, MN 56484

hfairchild@ci.walker.mn.us

Project: Walker Public Library - Interior Design



ASHLAND OFFICE
1022 Lakeshore Drive
Ashland, WI 54806
P: (715) 292-6493

DULUTH OFFICE
306 West Superior Street, Suite
#1600
Duluth, MN 55802
P: (218) 727-1330

MINNETONKA OFFICE
12450 Wayzata Blvd, Suite #227
Minnetonka, MN 55305
P: (218) 727-1330

Attn: Contract Analyst
1316 North 14th Street
2nd Floor
Superior, WI 54880

Dear Linda,

We are pleased to present the credentials of our Design Team for the Wade Bowl Park Water Play Design Phase. As you will see, we are presenting a team with a vast amount of experience in public restroom projects. Our experience with projects in Native American communities spans over 37 years and a great range of building types. Tim Meyer, AIA, has worked extensively in Northern Wisconsin, Minnesota, and many other locations throughout the Midwest. His relationships started while at previous firms but those have carried over to becoming his own clientele at his business. We are very fortunate to have worked with so many people and we are proud to have them as our clients.

Meyer Group is a multi-disciplinary firm that includes the following disciplines represented, in-house: Architecture, Graphic Design, Interior Design, Landscape Architecture, Planning, Project Management, and Owner's Representation. Meyer Group Architecture's CEO and Principal Architect, Tim Meyer, AIA, CID, NCARB, LEED AP will be the authorized representative for our team. Tim has over 37 years of experience as an owner, CEO, partner, project architect, project manager, and project designer. With Tim's vast experience in diverse sectors of work, Meyer Group Architecture has the resources it needs to complete your project with great detail and excellence.

We will be bringing expert sub-consultants to join our team. Each consultant has been handpicked for their expertise in their specialized field of work. This gives us a chance to choose our sub-consultants who specialize in the project building type to give the client the best of the best. Moore Engineering will serve as our Landscape Architecture consultant; Water Technology Inc will be our water park design consultant; and Graef will be our civil engineering consultant. We are happy to present such a diverse and nationally known team who have done great work throughout the state of Wisconsin.

We will work together to help ensure accurate coordination of disciplines and building systems, thus eliminating conflicts, construction problems, and delays. Our working relationship with our subconsultants also helps keep projects on schedule, completed on-time, and under budget. This proposal response outlines our vast experience with public restroom projects, as well as our overall philosophy of business and partnership. We hope you find our firm distinctly qualified. We stand ready to provide you with outstanding design and development proficiency as well as support, advice, information, and guidance throughout the entirety of the project. We would be extremely privileged to be granted an opportunity to work with you on this contribution to the Superior community. If I can offer any further information or clarification of the material set forth in this proposal, please do not hesitate to ask, as I am more than happy to be of assistance.

Sincerely,

Tim Meyer, AIA, CID, NCARB, LEED AP
Principal Architect & CEO
tim.meyer@meyergroupduluth.com

WHO WE ARE



Meyer Group will create responsible, progressive design solutions through a process that surpasses our clients' expectations on all levels.

Meyer Group, P.C. is a multi-disciplinary resource and service based architectural firm. Through our progressive and forward-thinking, planning and design process, we provide superior quality, responsible and environmentally sound design solutions for a range of projects. All aspects of our business are centered on building responsive relationships with our clients.

Meyer Group fills a special niche in the architectural community. Founded by Timothy Meyer, AIA, CID, NCARB, LEED AP, our business has grown from his vast experience in government, commercial, educational, and tribal architecture. An unparalleled level of commitment to our clients and a deep sense of investment in each project we undertake are at the foundation of our group's approach. With a talented, seasoned, and enthusiastic staff, we

extend a unique brand of design to meet the needs of each of our clients. Our work doesn't end when we sign off on drawings, or even when the last coat of paint is applied to the inside of a sparkling new building. We provide resources to clients that extend beyond design and architecture, and we focus on providing long-term service. When we partner with a client we create a lasting relationship rooted in our tenets of responsiveness and respect.

The importance of respecting our clients is paralleled by our efforts to create designs that also respect the environment. We incorporate the use of rapidly renewable and recycled materials to create value-added designs with an eye to being friendly to the natural environment. This emphasis is critical in our efforts to exercise responsibility toward our clients and communities.

Ownership:
Professional Corporation,
Timothy L. Meyer

Year Established:
June 17, 2009

Staffing By Discipline:
(1) Licensed Principal Architect & CEO
(1) Registered Architect & Project Manager
(1) Project Manager
(1) Registered Architect
(1) Senior CADD Technician & Production Manager
(2) Designer III
(3) Administrative Staff

(10) Total Personnel

RESPONSIVENESS

to our clients and their needs, at all times.

RESPECT

for our clients, the natural environment, and our employees.

ENVIRONMENTAL FOCUS

providing responsible, environmentally friendly/eco-conscious design of structures as well as energy-efficient engineering.

RELATIONSHIP-FOCUSED

treating our clients as part of our enduring business family, not just customers.

COMMUNITY-INVESTMENT

honoring the communities in which we live and work, and seeking to be a force for positivity within.

COLLABORATION

working with our clients and community as a team to provide the highest quality work possible.

Firm History & Overview



1960

YEAR ESTABLISHED

ESOP

OWNERSHIP TYPE - S-CORP

190+

EMPLOYEES

Engineers
Engineering Technicians
Surveyors & Crews (PLS)
CADD & GIS Technicians
Environmental Scientists

11

OFFICE LOCATIONS

North Dakota

Bismarck
Horace
Minot
Valley City
West Fargo
Williston

Minnesota

Bemidji
East Grand Forks
Fergus Falls
Plymouth
St. Cloud

***Improving lives
by building strong
communities.***

Kip Moore and Marshall Moore founded Moore Engineering in 1960 to create solutions for everyday problems. The brothers incorporated their partnership in 1970. Today, Moore Engineering is a 100% employee-owned ESOP company that continues its dedication to advancing the region's water, municipal and transportation infrastructure.

Since our company's inception, Moore's engineering and technical teams have completed thousands of civil and environmental projects throughout the Midwest. As members of the same communities we serve, our employees are invested in every project's success, and work with hundreds of municipalities, counties, water resource and watershed districts, developers and private citizens to help them thrive. Many of our clients have been with us for decades – we've served as the City Engineer for Casselton, ND, since 1962.

We attribute our success to the values that have guided our growth since the beginning. Moore Engineering is a family that believes in **Respect** and we strive to show **Integrity** in all our work. We consistently maintain our **Accountability** and **Loyalty**, upholding our obligation to the health, safety and welfare of the people at the center of our work. By giving back to those in need and incorporating **Kindness** into our daily work, we are truly committed to improving lives and building strong communities.

Moore works with multiple entities at local, state and federal levels to effectively carry out projects with the understanding that the work we do for you today is an investment in your future. We recognize that every project is unique and we always take the opportunity to improve the quality of life for the people the project impacts. We look forward to growing side by side with our clients, and we nurture that relationship from day one.

SERVICE OFFICE

Two Carlson Parkway, Suite 110
Plymouth, MN 55447



WATER TECHNOLOGY, INC



Firm Overview

The WTI team is a highly qualified group of individuals comprised of creative architects, landscape architects, engineers, designers, business developers and administrators, all with a passion for aquatics. Together, we combine our talents to develop original, aquatic facilities from concept to reality. In addition, WTI maintains solid relationships with other consultants and contractors and continues to set the standards in the aquatic industry across the United States and around the world.

PHILOSOPHY

Water Technology, Inc.'s (WTI) creative energy and passion embraces the philosophy that aquatic recreation completes communities and makes them a better place to live.

COMPANY DETAILS

- Established in 1983
- Largest Aquatic Design Firm in North America, Staff of 70+
- Quality Control Implementation
- Collaborative Team Process
- International Portfolio
- Specialized Aquatic Professionals on Staff:
 - Executive Team (5)
 - Project Development (4)
 - Architects (4)
 - Landscape Architects (2)
 - Engineers (6)
 - - Civil (2), Mechanical (3), Structural (1)
 - Artistic / Creative Design (3)
 - Site Planners / Designers (3)
 - Technical Designers (7)
 - Mechanical Designers (6)
 - Project Managers (8)
 - Administrative (7)

WTI ADVANTAGES

- Solution driven planning and philosophy
- Two-way sharing process between WTI and client
- Forward-looking designs that support dynamic community programs
- 150+ AQUATIC Projects Per Year
- Historical database of cost estimates and realistic timelines

EXTENSIVE PORTFOLIO OF PROJECTS OF VARYING VENUES

- Waterparks
- Resort and Hotel Pools
- Competition Pools
- Faith Based Community Centers
- Water Playgrounds
- Public Facilities
- Therapy and Wellness Pools
- Schools and Universities

Locations

HEADQUARTERS

100 Park Avenue
Beaver Dam, WI 53916
T. 920.887.7375

TEXAS

6636 N Riverside Dr.,
Ste 500B
Fort Worth, TX 76137
T. 682.708.7007

WWW.WTIWORLD.COM





Since its inception in 1961, GRAEF has grown from a small individual partnership to a prominent, multi-disciplinary international firm. GRAEF has a team of nearly 300 employees spread across ten offices in the Midwest, Florida, and Turks and Caicos.

Over 63+ years, GRAEF's unwavering dedication to excellence has been fueled by core values such as integrity, quality, and a steadfast commitment to exceptional customer service. These principles form the bedrock of GRAEF's operations, ensuring that clients receive the highest level of satisfaction and a seamless experience.

GRAEF has remained at the forefront of the industry, consistently adapting to emerging trends and embracing advancements, and is proud to be a reliable partner for clients seeking top-tier design services and unmatched expertise. GRAEF is licensed to operate in the state of Wisconsin.

OUR CORE PURPOSE

To improve the physical environment for the benefit of society in a sustainable manner

WE ARE

- ▶ Site/Civil Engineers
- ▶ Landscape Architects
- ▶ Planners & Urban Designers
- ▶ Environmental Engineers
- ▶ Transportation Engineers
- ▶ GIS Specialists
- ▶ Surveyors
- ▶ Architects
- ▶ Mechanical, Electrical & Plumbing Engineers
- ▶ Structural Engineers





REGISTRATIONS

Wisconsin #9462, Minnesota, C00695,
Michigan, North Dakota, NCARB, Certified
Interior Designer, LEED Accreditation 2008

EDUCATION

North Dakota State University
Bachelor of Architecture
Bachelor of Environmental Design

St. Cloud University
Pre-Engineering

EXPERIENCE

36 Years | MGA: 14 Years

PROFESSIONAL AFFILIATIONS

AIA Minnesota
State Board of Directors
(1998 - 2001; 2010 - 2011)

COMMUNITY INVOLVEMENT

City of Duluth - Planning Commission
(2013 - 2021)

City of Superior - Historic Preservation
Commission
Member
(2009 - 2013; 2018 - PRESENT)

APEX Economic Development
Member

City of Duluth – HRA Commission
(2021 - PRESENT)

City of Duluth - Historic Preservation
Commission
Member - Two Terms

AIA Northern Minnesota
(2009 - PRESENT)

MEYER GROUP ARCHITECTURE DULUTH

306 West Superior Street, Suite #1600
Duluth, MN 55802
(218) 727-1330
tim.meyer@meyergroupduluth.com

TIM MEYER

AIA, CID, NCARB, LEED AP, PRINCIPAL ARCHITECT

Tim is a registered Architect/Interior Designer/ LEED-Accredited Architect with over 36 years of experience as a partner, project architect, project manager and project designer. Tim began his work in the Duluth-Superior area as a project designer, project manager, project architect and partner specializing in Indian gaming and tribal community development projects. Tim led the tribal community development market segment that he developed at a previous firm. His primary roles included client relations, business development, involvement in firm management and overall project management. In 2009, Tim’s vast architectural experience led him down an entrepreneurial path and he founded the Meyer Group, a service-based architectural firm specializing in environmentally-sound progressive design solutions. He is a long-standing community advocate currently serving on the Duluth Housing & Redevelopment Authority Board and Superior Public Museums Board.

PROJECTS

Anoka Park Pavilion

Andover, MN

City of Duluth - Lincoln Park Pavilion

Duluth, MN

Cook County Ice Rink

Grand Marais, MN

**WI Department of Facilities Develop-
ment - Pattison State Park Window
Replacement**

Superior, WI

**City of Walker - Public Library
Interior Design**

Walker, Minnesota

Ironwood Carnegie Library

Ironwood, Michigan

Empire Block

Superior, Wisconsin

City of Duluth - Lincoln Park Pavilion

Duluth, Minnesota

City of Cloquet Public Library

Cloquet, Minnesota

Ely Public Library

Ely, Minnesota

**Duluth Public Library - Public
Restroom Renovation**

Duluth, Minnesota

**City of Superior - Carnegie Library
Roof Replacement**

Superior, Wisconsin

**Superior Public Library - Public
Restroom Study**

Superior, Wisconsin

**Washburn Elementary Cold Storage
Addition - K-5 Schools**

Washburn, Wisconsin

**Holy Family School - K-8 School
Addition & Renovations**

Albany, Minnesota

Ashland High School Pre-Design

Ashland, Wisconsin

**Cook County Schools - High School
Renovation**

Grand Marais, Minnesota

**Duluth Schools - Area Learning
Center**

Duluth, Minnesota

**Nay-Ah-Shing Schools Renovations -
Mille Lacs Band of Ojibwe - Lower &
Upper Schools - K-5 & 6-12***

Onemia, Minnesota

**Minisinaakwaang Leadership
Academy - Additon & Renovations
- K-8 School - Mille Lacs Band of
Ojibwe***

Onamia, Minnesota

*WHILE WITH PREVIOUS FIRM

LEED

**LEADERSHIP IN ENERGY &
ENVIRONMENTAL DESIGN**



GREEN BUILDING CERTIFICATION INSTITUTE

HEREBY CERTIFIES THAT

Timothy Meyer

HAS ACHIEVED THE DESIGNATION OF

LEED® ACCREDITED PROFESSIONAL

BY DEMONSTRATING THE KNOWLEDGE OF GREEN BUILDING PRACTICE
REQUIRED FOR SUCCESSFUL IMPLEMENTATION OF THE LEADERSHIP IN ENERGY
AND ENVIRONMENTAL DESIGN (LEED®) GREEN BUILDING RATING SYSTEM™.



Rebecca L. Flora
Chairman

September 25, 2008
Date Issued

R.
S. Richard Pedrizzi, President and CEO

Printed on 50% bamboo fibers / 50% post-consumer fibers with vegetable based inks.

OUR APPROACH TO GREEN INTERIORS & SUSTAINABILITY INCLUDES:

A wide range of inexpensive, cost-effective techniques for clients interested in Green Design.

Energy efficiency, daylighting, use of recycled materials, use of rapidly renewable materials, and efficient space planning are just a few of the techniques utilized.

Use of low VOC paints, adhesives and low off-gassing particle board products are part of our standard specifications.

Our mainstream design process is a "Green" design process, allowing for our clients to pick and choose which Green strategies are to be utilized in their Interior Architecture/ Interior Design. Green Design does not need to be more costly, but rather more "intelligent" design.



REGISTRATIONS

Minnesota #59157, NCARB

EDUCATION

North Dakota State University
Master of Architecture
Bachelor of Science - Environmental Design

EXPERIENCE

11 Years | MGA: 8 Years

PROFESSIONAL EXPERIENCE

Freelance Work (Subcontractor)
Designer/Draftsman
(August 2014 - October 2015)

Robert A. Berquist Architect
Designer
(May 2012 - August 2014)

Steve C. Martens Architect
Architectural Intern
(June 2011 - August 2011)

MEYER GROUP ARCHITECTURE DULUTH

306 West Superior Street, Suite #1600
Duluth, MN 55802
(218) 727-1330
erik.schwarzkopf@meyergrourduluth.com

ERIK SCHWARZKOPF

REGISTERED ARCHITECT, PROJECT MANAGER, NCARB

Erik Schwarzkopf is a graduate of North Dakota State University. He completed his Master in Architecture in 2013 and has eleven years of experience in the Architecture industry. Erik chose the profession of architecture with the intention of making a positive difference in the community.

PROJECTS

Anoka Park Pavilion

Andover, MN

City of Duluth - Lincoln Park Pavilion

Duluth, MN

Cook County Ice Rink

Grand Marais, MN

WI Department of Facilities Development - Pattison State Park Window Replacement

Superior, WI

Min No Aya Win Human Services Center

Cloquet, Minnesota

Ponemah Pow Wow Grounds - Pre-Design

Ponemah, Minnesota

Gii-Ishkonigewag Pow Wow Grounds

McGregor, Minnesota

Waaswaaganing Indian Bowl Living Arts and Culture Center

Lac Du Flambeau, Wisconsin

Adaawe Wigamig Business Incubator Pre-Design

Red Lake, Minnesota

Adaawe-wigamig Business Incubator Pre-Design

Red Lake, Minnesota

Bad River Old Clinic Renovation - Natural Resources Department

Odanah, Wisconsin

Bad River Transit Building Addition Pre-Design

Odanah, Wisconsin

Leech Lake Early Childhood Education Child Care Center Addition Pre-Design

Cass Lake, Minnesota

Lac du Flambeau Transit Garage Addition

Lac du Flambeau, Wisconsin

Lac Courte Oreilles Housing Self Help Housing

Hayward, Wisconsin

Grand Casino Hinckley - Amphitheater Upgrades

Hinckley, Minnesota

Fond du Lac Tribal Center, Sawyer Center, Brookstone Center, WKLK Radio Station - Facilities Conditions Assessment

Cloquet & Sawyer, Minnesota

Bad River Moccasin Trail Convenience Store Renovation - Pre-Design

Odanah, Wisconsin

Superior Housing Authority - 15 Homes Re-siding & Doors

Superior, Wisconsin

Ashland County Health & Human Services Building - Physical Assessment

Ashland, Wisconsin

University of Minnesota - Duluth Multicultural Center Renovation

Duluth, Minnesota



Chad Feigum, ASLA, PLA

Senior Landscape Architect

chad.feigum@mooreengineeringinc.com

952.847.3369

EDUCATION

BA in Landscape Architecture, North Dakota State University

BA in Environmental Design, North Dakota State University

PROFESSIONAL EXPERIENCE

Moore Engineering since 2023

Other Firms - 22 Years

PROFESSIONAL REGISTRATIONS

Professional Landscape Architect - MN, IA, MI, ND, OH, SD, WI

PROFESSIONAL AFFILIATIONS

American Society of Landscape Architects

Council of Landscape Architectural Registration Boards

Minnesota Shopping Center Association

ROLE/BIO

Chad has worked throughout the county since 2000 in landscape architecture, site planning, and project design. Chad's experience in private and public development work gives clients a unique perspective to get their projects designed, approved, and constructed. He is experienced in client relations, neighborhood partnership building, due diligence, entitlements, municipal and development processes, master planning, retail and multi-family developments, park design, and construction administration to cover the entire project from inception to completion.

RELEVANT EXPERIENCE

City of Dilworth Master Planning

» Dilworth, MN

Senior Landscape Architect designing new conceptual layouts for the growing city of Dilworth. Worked with city's engineer to analyze road layouts, land use designations, and access points to prepare new land development opportunities for future businesses.

Paul Bunyan Park Trailhead

» Akeley, MN

Senior Landscape Architect for this new trailhead location for the Paul Bunyan Park trail. The project provided new and existing improvements to the facilities which included the Paul Bunyan Historical Museum and the Paul Bunyan Statue. Created a new parking lot for users, developed new trail pathways around the site, and connecting to the Heartland Trail to the north. Provided space for the opportunity of adding new future buildings to the park, while adding more wayfinding signage and entry into the existing park.

Cass Lake Trailhead Park

» Cass Lake, MN

Senior Landscape Architect for this new park and trailhead for the local corridor of the regional trail. Project will include bicycle amenities for repair and maintenance for riders, a public restroom facility, a new park structure for seating and shade for users of the park and buffering the site from the adjacent homeowner. The site design will add new wayfinding signage and a smooth connection into the park from the existing trail corridor.

* Pints and Paddles

» Maple Grove, MN

Lead Landscape Architect / Project Manager for this new concept in the northern metro that would bring indoor pickleball courts together with a self-pour tap room and restaurant. The project was designed to have garage doors opening to a large patio to the west for users. Coordination with the existing utility connections, previously designed stormwater treatments, and original PUD development standards were all unique hurdles to bridge for this development to get city and local agency approvals.

**Project completed while employed by another firm*



MATT FREEBY, AIA, LEED AP, NCARB

Project Director



Matthew Freeby has a breadth of experience in the design and construction of numerous building types and structures; with overall responsibility for large project development, he has handled projects ranging from \$1 million to \$100 million. His project experience ranges from conceptual planning to construction management.

Matt is relied upon to define project scope, goals and deliverables that support WTI's business goals in collaboration with senior management. He helps to determine and assess need for additional staff and/or consultants and make the appropriate recruitments if necessary during project cycle. A registered Architect in 22 states and a NSPF Certified Pool/Spa Operator, Mr. Freeby is a LEED Accredited Professional with an advanced depth of knowledge in green building practices and sustainable aquatic design and operations. Matt's attention to detail and persistent pursuit of excellence provides the industry benchmark in aquatic design.

EDUCATION

Master's Degree, Architecture
Washington University
St. Louis, Missouri

Master's Degree, Civil Engineering,
Construction Management
Washington University
St. Louis, Missouri

Bachelor of Arts, Architecture
Washington University
St. Louis, Missouri

REGISTRATIONS

AIA Architect: AL, AR, CA, DE, FL, HI, IN, LA,
MI, MN, MO, NE, NJ, NM, NV, NY, OK, RI,
TN, UT, WA, WI

LEED Accredited Professional

NSPF Certified Pool / Spa Operator (CPO)

PROFESSIONAL AFFILIATIONS

American Institute of Architects (AIA)
National Council of Architectural
Registration Boards (NCARB)
Themed Entertainment Association (TEA)

INDOOR FEATURED PROJECTS

Buchner Park Pool Conceptual Design - Waukesha, WI
Erb Park Swimming Pool - Appleton, WI
Richland Center Aquatic Center - Richland Center, WI
Baldwin Medical Center - Baldwin, WI
Port Superior Marina - Bayfield, WI
Chippewa Falls - Chippewa Falls, WI
VFW Park Design - De Pere, WI
Elm Grove Western Racquet Club Design - Elm Grove, WI
Leonard-Leota Park and West Side Park - Evansville, WI
Village Pointe Commons - Grafton, WI
Green Bay Colburn Pool - Green Bay, WI
The Tundra Lodge - Green Bay, WI
Water Feature - Lake Delton, WI
Christmas Mountain Village - Lake Delton, WI
Goeres Park Pool - Lodi, WI
Madison Goodman Pool Expansion Study - Madison, WI
Madison Metropolitan School District - Madison, WI
Soderholm Aquatic Center at University of Wisconsin-Madison - Madison, WI
Manitowoc Family Aquatic Center - Manitowoc, WI
Bay Area Medical Center - Marinett, WI
Bucks Arena - Milwaukee, WI
Columbia St. Mary's Hospital - Milwaukee, WI
Saint John's on the Lake Active Independent Living Center - Milwaukee, WI
South Suburban YMCA - Milwaukee, WI
Oshkosh Family YMCA - Oshkosh, WI
Creekview Aquatic Center at the Evergreen Retirement - Oshkosh, WI
Port Shiloh Swimming Pools - Port Shiloh, WI
UW River Falls - River Falls, WI
Richland Center Aquatic Center - Richland Center, WI
House on the Rock Welcome Center - Spring Green, WI
Harbour Village Resort - Sturgeon Bay, WI
VA Medical Center - Tomah, WI
Epic Systems Water Feature - Verona, WI
Edgewater Retirement Community - West Des Moines, WI
West Salem School District - West Salem, WI
Wisconsin Dells Noah's Ark Flow Rider Design - Wisconsin Dells, WI
Wisconsin Dells Municipal Aquatic Center - Wisconsin Dells, WI
Wisconsin Rapids Aquatic Complex - Wisconsin Rapids, WI



WORLD LEADERS IN AQUATIC PLANNING, DESIGN AND ENGINEERING



PAT'S EXPERTISE IN AQUATICS AND WATER PARKS BRINGS INVALUABLE INSIGHTS AND COST-SAVING IDEAS TO EVERY PROJECT HE WORKS ON.

Patrick Skalecki PE, LEED AP

SENIOR CIVIL ENGINEER | PRINCIPAL

EDUCATION

B.S., Civil Engineering, 1992, University of Wisconsin-Platteville, Platteville, WI

REGISTRATION

Professional Engineer – IA, ID, IL, IN, MI, MN, WI

CERTIFICATIONS

LEED Accredited Professional

Over the past 30 years in the engineering industry, Pat has developed extensive knowledge along with technical and managerial skills in public infrastructure and site engineering. He has been involved in projects from idea to grand openings. This depth of knowledge and experience helps clients evaluate project scope and budget early on in the process. He is skilled in public presentation and delivery needed to build consensus among stakeholders. During design, he uses his abilities in hydraulic modeling, hydrologic studies, municipal utility design, stormwater management and system design, roadway design, complete site development, parking lot design and associated construction engineering to realize the vision of the clients into a successful project.

PROJECT EXPERIENCE

DE PERE AQUATIC FACILITY AT VFW PARK, DE PERE, WI – PROJECT

MANAGER: Teamed with Water Technology, Inc., GRAEF provided site/civil, structural, architectural and MEP engineering services related to design and construction of a new aquatic facility including an activity pool and tot pool with a 6,150-square-foot bathhouse containing bathrooms/changing rooms, office and guard spaces, first aid, entry lobby, meeting rooms, family changing rooms, and a concessions wing.

COLBUN PARK POOL, GREEN BAY, WI - PROJECT MANAGER:

GRAEF engineers led The GRAEF/Water Tech team for the \$6.5 million dollar aquatic center. GRAEF staff provided multiple preliminary design options, final design services, construction drawings, construction specifications, and construction administration services.

JBS SITE REDEVELOPMENT SUBDIVISION AND PARK, GREEN BAY, WI

– PROJECT MANAGER: Project involved the redevelopment of a 25.6-acre site into a transformational urban residential and community development in a under-served area of the City. Plans included roadway and utility infrastructure, destination community park with splashpad and playground, urban farm/community building, and woonerf boulevard activity zone.

ERB PARK AND SWIMMING POOL FACILITY EVALUATION AND CONCEPT PLAN, APPLETON, WI – PROJECT MANAGER:

While teamed with a nationally-recognized aquatic facility design firm, completed an investigation and review of the existing facilities and park and to develop concept plans for pool improvements and/or renovations for the City's aging facilities.

ERB PARK POOL

Appleton, Wisconsin



OWNER

Appleton Parks & Recreation
100 N. Appleton St. Appleton, WI 54911
(920) 832-5905

COMPLETED

2017

AWARDS

2019 - Aquatic Design Portfolio - Athletic Business

WEBSITE

www.appletonparkandrec.org

The Appleton Parks & Recreation Committee and Common Council approved a \$10.5 million budget to update and reconstruct the beloved neighborhood Erb Pool, bathhouse, and pavilion. The funds were also intended to update the overall park including parking lots, vehicular and pedestrian traffic, park use and aesthetics.

WTI worked with the City of Appleton Parks and Recreation and the lead consultant, MSA Professional Services, Inc. of Baraboo, to create and present three preliminary plans for public input. Each option included an eight-lane, 50-meter pool, and a second pool with a zero-depth entry featuring an area dedicated to intermediate swimmers and possible water slides. The team held interviews with stakeholders and public meetings to determine the final plan presented to the Parks and Recreation Committee for review and comment. Once approved, WTI began work on the detailed drawings for construction.

The facility celebrated its grand opening in July of 2017 with massive crowds and lots of smiles. This historic park has been rejuvenated and will continue to be a recreational pillar of strength in the Appleton area.

AMENITIES

50 Meter Competition Pool
8 Lanes
1 Meter Spring Board Diving
6,177 SF Leisure Pool
Geysers and Deck Sprays
Custom Elevations

Interactive Water Features

Tot Slide
Water Basketball
Run-out Body Slides
Concessions
Sun Turf

MEAD SPLASH PAD

Wisconsin Rapids, Wisconsin



OWNER

City of Wisconsin Rapids
444 West Grand Avenue
Wisconsin Rapids, WI 54495

COMPLETED

2017

WEBSITE

www.wirapids.org

Opening just in time for the end of summer in 2017, the community of Wisconsin Rapids happily welcomed the new Mead Splash Park. The new \$550,000 splash pad was funded entirely by the Wisconsin Rapids-based Legacy Foundation, and offers an aquatic oasis without costing the taxpayers anything.

Together with MSA Professional Services, Water Technology, Inc. provided aquatic design and engineering services for this new splash pad that replaced the Mead Pool that closed in 2014.

The design for the new splash pad comes in at just shy of 4,000 square-foot and was designed with help from elementary students who had a special planning session with the mayor. Mead Splash Pad has variety of spray and play features for everyone to splash around in, but more specifically, there is a Vortex Labyrinth installation. This new component provides engaging opportunities for youngsters to play with a life-like stream that encounters anything from floating objects to playful obstructions. Whether enjoying ground-sprays, splash tunnels or any of the other engaging aquatic amenities this park truly has something for everyone.

AMENITIES

3,967 SF Splash Pad
Multiple Interactive Features Including a Water Journey, 4 Spray Cannons, 10 Jet Streams and a Large Spider

APEX SPLASH PAD ADDITION

Arvada, Colorado



OWNER

Apex Park and Recreation District
13150 West 72nd Avenue
Arvada, CO 80005

COMPLETED

May 2018

WEBSITE

www.apexprd.org

Located in Arvada, Colorado, the Apex Center was built with the intent to be the top recreational facility in the region. The Apex Center boasts a wide array of activities available to its guests, including an aquatic area with three pools, two NHL regulation ice rinks, an aerobics and fitness area, a climbing wall, an indoor children's play area and an adult lounge and cafe. WTI worked with Barker Rinker Seacat (BRS) Architects to design the facility which opened in 2000.

The design team was rehired again in 2016 to design an outdoor splash pad to increase amenities for Arvada's users in the summer and to enhance the aquatic recreation value of the facility as a whole. This spray pad packs a lot of punch with spray and play features that are geared towards every age group. The custom, Apex-themed water tower provides hours of fun and a visual-nod to this great community that truly values recreation and play.

REINDAHL PARK SPLASH PAD

Madison, Wisconsin



OWNER

City of Madison
210 Martin Luther King Jr. Blvd
Madison, WI 53703

COMPLETED

2014

AWARDS / FEATURES

2015 - Aquatic Design Portfolio -
Athletic Business

WEBSITE

www.cityofmadison.com/parks/

Dozens of children, of all ages, gathered under the interactive features for the inaugural activation of the water sprays at Reindahl Park. The spray ground is free and open to the public throughout summer months.

WTI was hired in 2013 by the City of Madison for the design and engineering of the Reindahl Park Splash Pad, support/concessions building, and Shade Shelters. Through a series of public and staff meetings, WTI developed the design for the new splash park. The 2,200 Square Foot splash pad is designed into three connecting spray zones, each appealing to a slightly different age group. Adjacent to the splash pad are shade shelters, designed by WTI, which house 2-4 picnic tables and a mechanical support/concessions building. Uniquely, a remote monitoring system connects to the splash pad for the convenience of the Madison Park Maintenance department to keep an eye on the mechanical systems.

Other improvements expected to take place at the park over the course of five years include athletic facility enhancements and new shelter landscaping. The park is also home to a major soccer complex, reservable shelter, playground, basketball court, community gardens, and tennis courts.

AMENITIES

2200 SF Splash Pad

Vortex

(1) Aqualien PowerSpinner

(2) Loop No1

(1) Bamboo No10

(1) Team Spray No2

(1) Team Spray No1

(3) Directional Water Jet

(1) Ombrello Twirl No1

(1) Ombrello Twirl No2

(1) Ombrello No1

(2) Ombrello No2

(5) Jet Stream

(3) Aqualien Flower No1

(1) Fountain Spray

(2) Groud Geyser

(1) Aqua Dome No1

(2) Spray Loop

(1) Watergarden Activator No1

(2) Foot Activator



DE PERE VFW AQUATIC FACILITY

DE PERE, WI

SERVICES

Civil Engineering, Construction Engineering & Inspection, Electrical Engineering, Landscape Architecture, Mechanical Engineering, Plumbing Engineering, Surveying Structural Engineering

DATA

\$7.14 Million Project Cost
 5,300-Square-Foot Recreational Pool
 6,150-Square-Foot Bathhouse

The City of De Pere, WI added a new \$7 million aquatic center replacing an aged and failing municipal pool.

The VFW Aquatic Facility included an entirely new 6,150-square-foot facility with a bathhouse containing bathrooms/changing rooms, office and guard spaces, first aid, entry lobby, meeting rooms, family changing rooms, and a concessions wing. A separate 1,250-square-foot mechanical building housed the pumps and chemical rooms and provide storage space. The aquatic features included a lap pool with a dive well, activity zone, water walk, dual body slides, drop slide, separate tot pool with zero depth entry, and tot play features.

The first phase of work included review and analysis of the existing aquatic facility and VFW Park features, along with the development of a conceptual design plan and a budget estimate for a new and unique replacement aquatic center. The GRAEF/WTI team collected and reviewed existing data and information, and conducted public meetings and interviews with key stakeholders. Multiple design option renderings and budgets were prepared and presented.

The next phase included full design plans and specifications of the building, site, and aquatic elements of the facility including bidding and construction management.



TOSA POOL AT HOYT PARK

WAUWATOSA, WI

SERVICES

Civil Engineering, Structural Engineering, Survey
Aquatics (Water Tech)

The Friends of Hoyt Park, a non-profit community organization, teamed with Milwaukee County to rebuild the Hoyt Park Pool, which had been closed for close to 10 years. The \$9 million pool and park opened in 2011, and the complex includes a new lap pool, diving board, slide, and zero-entry design including a redesigned changing complex.

The GRAEF/Water Tech team was chosen to design the new pool. GRAEF provided civil engineering services to Milwaukee County to improve all the support infrastructure in the park including a new parking lot, decorative fencing, recreational path, and utility work. The proximity of the pool to the Menomonee River led to innovative storm water design solutions and challenges with utility service,

requiring a 1,200-foot directional drill under the river to provide water service to the pool. GRAEF also provided civil engineering services to the design-build team to construct the pool, deck, and building renovations.

The tight budget for the community project challenged GRAEF to analyze the infrastructure thoroughly to determine what existing site could remain to maximize both environmental and cost efficiency.

The pool opened with great fanfare from the local community with local recognition including Wauwatosa Chamber of Commerce Civic Appreciation Award and Milwaukee Magazine's "Best Things in Milwaukee."



COLBURN PARK POOL

GREEN BAY, WI

SERVICES

Civil Engineering, Project Management, Master Planning
Structural Engineering, Landscape Architecture,
Mechanical, Electrical, and Plumbing Engineering,
Topographic Survey, Aquatics (Water Tech)

GRAEF Provided engineering design to replace the Colburn Park pool. This project includes both pool, building, and associated site work.

GRAEF engineers led The GRAEF/Water Tech team with overall project management, master planning, site/civil engineering, structural engineering, mechanical engineering, electrical engineering, plumbing engineering, and landscape architecture for this \$6.5 million dollar aquatic center. GRAEF staff provided multiple preliminary design options, final design services, construction drawings, construction specifications, and construction administration services.

The new facility will feature a 50-meter competition swimming pool along with zerodepth entry play area, slides and a diving well. The bath house includes a concessions area as well as a rentable conference room.

Additional amenities include a sand play area, picnic pavilion, and grass viewing berm. Public input was an important part of the design process, with local public comment guiding many design decisions. Close coordination with City staff was required to ensure the design met both public needs and community desires.

RELATED PROJECTS

Anoka Park Pavilion - Andover, MN

Services Architecture, project management, construction

Size #1- 3800m Sq Ft under roof;

#2- 5750 Sq Ft under roof.

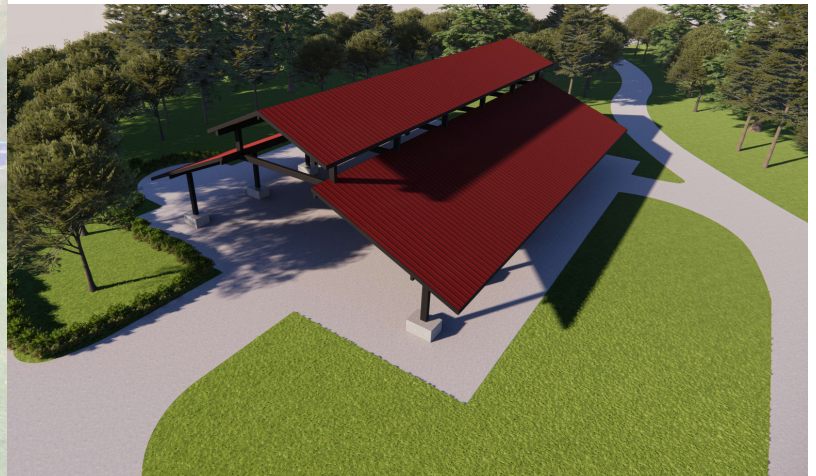
Cost \$1.5 M

Completion Date Late 2024

Firm On Record Meyer Group Architecture

Team Manager

Timothy Meyer - Architect/Project Manager



This project is the replacement of two wood frame picnic shelters which did not last as long as expected. Low maintenance and long life became high priorities for the replacement structures. The structure will be hollow rectangular steel beams with a metal roof for durability. There will be carefully finished cast in place concrete base for the columns and low walls for a serving counter in each shelter. Roofs will be modified gable with clerestory openings running the length of each side providing ventilation and light to the center of the space. The underside of the roof which will be protected from weather will be wood adding warmth and some sound absorption to the space. Lighting will be LED fixtures with switchable light levels and color rendering. All wiring will be concealed in the hollow structural beams. Options to adapt a pre-engineered structure to the needs of the project or to design a one of a kind building were studied.



Cook County Ice Rink - Grand Marais, MN

Services Architecture, Interior Design, Project Management

Size N/A

Cost \$746,000

Completion Date 2019

Firm On Record Meyer Group Architecture

Team Manager

Timothy Meyer - Architect/Project Manager



Meyer Group Architecture was retained to design a new Ice Rink and Warming building for the Cook County Amateur Hockey Association. The new facilities provide for Youth Hockey programming in Grand Marais, Minnesota. Provisions were made for player changing and warming facilities, public *Vault Toilet* restroom facilities, concessions, skate rental and sharpening, recreation storage, public restroom facilities, and a new garage facility for ice re-surfacing equipment. The new facilities are included as part of the Cook County Community Center Recreation Complex. Sharing of the facility with the softball, tennis, playground, and youth recreation programs ensures year round, multi-purpose use of the facility.

City of Duluth - Lincoln Park Pavilion - Duluth, MN

2024 Preservation Award Recipient

Services Architecture, Historic Preservation, Interior Design, SHPO

Size N/A

Cost N/A

Completion Date 2019

Firm On Record Meyer Group Architecture

Team Manager

Timothy Meyer - Architect/Project Manager



The Lincoln Park Pavilion is getting an upgrade! Funded through a National Park Service grant and the City of Duluth's half-and-half tax initiative, major changes are coming to Lincoln Park. The pavilion itself suffered fire damage back in 2014 as the result of arson and has been awaiting funding to proceed with repairs. Meyer Group Architecture's role will be to address concerns of accessibility at the structure and renovate the existing public restrooms.

WI Department of Facilities Development - Pattison State Park Window Replacement - Superior, WI

Services Architecture, Historic Preservation, SHPO

Size (2) Buildings

Cost \$195,000

Completion Date 2024

Firm On Record Meyer Group Architecture

Team Members

Timothy Meyer - Principal Architect

Erik Schwarzkopf - Project Manager

Justin Fleck - Designer



Two buildings at Pattison State Park are receiving a full window replacement. Both buildings in the scope of services are on the National Register of Historic Places. Meyer Group Architecture's role is to ensure that design for replacement windows follows historical accuracy. An existing overhead door with a concrete apron is also in the scope of services for this project.

Project Background

Wade Bowl is a 5.2-acre park located at 1228 Clough Avenue, Superior, Wisconsin. The park is a large community park that contains a playground, pavilion, softball field, hockey (mini-dog park during non-winter months) and figure skating rink area, a restroom facility, basketball net on an asphalt pad, asphalt walking path through the park and a large gravel parking area. It is located within the northern central part of Superior and contains a fair amount of open green space that will become the home to the City's first water play area.

Project Goals

The primary goal will be to design, provide all construction documents and project cost estimates for the City's first water play area. In addition to the water play area systems, modifications to the existing restroom building by adding storage for water play mechanical and a possible joining roof structure or separate enclosed structure for mechanical, infiltration basin, accessibility improvements, site prep, plantings, paved seating area/path, skate loop, infiltration basin/planting beds, infrastructure modifications and site restoration.

Initial Listening Meeting – City of Superior

Our work on the project will involve an initial listening meeting with the City of Superior staff. Establishing initial and long-term goals will be an important initial step in steering and developing the project. All processes will be reviewed with the City of Superior, and whomever is chosen and designated to steer the project. Our proposed development process would be reviewed by the City of Superior.

Public Participation/Progress Reporting Meetings

Meyer Group Architecture will work closely with the City of Superior and its stakeholders to ensure that the needs for the facility are being listened to, as the quality of the resulting facility shall come from the quality of our listening. Stakeholder Meetings will be held with all facility users and groups. This information shall be collected, processed, and given back to the City of Superior for review to make any modifications needed before proceeding with planning and design activities. Once design begins, information shall be presented to stakeholder groups and be reflected in cycles of changes made until the design reaches an acceptable state for further development.

MGA will proceed with the definition of needs, scope definition and Programming process. A detailed, updated

scope of work document will be developed that includes all the necessary updates in the buildings needed to begin the space needs assessment. This document shall be used to establish budget needs for the project.

MGA will prepare summary reports outlining progress and adherence to schedule. This shall be updated and submitted monthly by the 15th of the following month.

Project Schedule

The Design Team will provide details, add tasks, and refine timelines for the project schedule during this phase of the project. This will be coordinated with the City of Superior schedule and overall development schedule. The overall schedule will be utilized to determine construction approaches, review constructability and be incorporated into the project evaluation process.

Establish Sustainability Goals

Sustainability goals shall be established for the project during this phase. Active and passive systems including solar, recycled materials, environmentally friendly materials, rapidly renewable materials, and regional materials shall be considered for use in the project. Overall sustainability goals for the facility shall be considered when making material selections. Life cycle costs of the project shall be reviewed including, energy efficiency, sustainability, maintenance aspects of the new design, materials, and equipment.

Safety and Security for All Staff and Visitors

Visitor and staff safety shall be of primary concern for the facility. Starting with safe site approaches and parking areas to entry points, safety shall be of primary concern in the facility during construction and operation of the facility. Meyer Group Architecture shall all work closely with the City of Superior to ensure we have safe staging areas, crane locations, material storage areas and contractor parking. Meyer Group Architecture shall work with the City of Superior to ensure a safe environment for facility users and staff during this extensive process.

Environmental reviews for lead or asbestos will not be a part of this scope of work.

Site Visits, Verification, and Photography of Building Site

Meyer Group Architecture will visit the park and spend time on-site, to verify existing conditions, prior to beginning any design work. All existing drawings and existing project

information shall be reviewed, to establish base-line condition of the site, structures and begin to establish a scope of work. All site elements shall be photographed and verified prior to beginning work. All existing drawing and project information shall be assembled and reviewed to establish, whether additional information or research is needed. All building elements shall be photographed as a matter of record and for future reference.

Programming / Needs Definition

Initial activities will include review of any previously study information prepared by others as a starting place for revising the WBP Preliminary Design Plan for all planned improvements. A park tour with the City of Superior would also be held. A review of all prior project information shall be performed to determine the amount of information that may be re-used and what portions may require revision. We will want to build on past work, rather than re-create it.

MGA will proceed with the definition of needs, scope definition and Programming and Needs Definition process. A meeting will be held with the City of Superior to develop initial needs for the project. So, the initial activities of the Design Team shall primarily be listening and gathering needed information to utilize in the preservation process.

A detailed, updated scope of work document will be developed that includes all the necessary updates in the buildings, needed to begin the space needs assessment. This document shall be utilized also to begin to establish budget needs for the project.

Diagrammatic Plans

The Design Team will prepare a set of diagrammatic colored plans, which will be used as a communication tool with all stakeholder groups that will be based on the Programming and communicate the needs for the newly renovated facility. These plans will be reviewed by the City of Superior and MGA will make any modifications needed to reflect the desired reconfiguration and renovation of spaces.

3-D Visualization / Modeling (Voluntary Alternate)

3-D visualization tools and modeling will be utilized to render and represent photo-real imaging for communication of design features. This important communication tool will be a great advantage in communicating design details to facilities staff and will be utilized throughout the design process.

Scheduling and Cost Analysis – Alternative Energy

All project scheduling and cost analysis shall be of primary concern, with the overall project budget in mind. All analysis is designed to maximize building performance, while conserving, respecting project resources. The aspects included shall cover Energy Efficiency; Sustainable Design and Materials; future Passive and Active Solar Electric or Hot Water Systems, and selection of durable and low maintenance materials. Overall Project Life Cycle Costing shall be undertaken in all design decisions.

Cost Estimating

An Opinion of Probable Cost will be prepared based on initial design information and preliminary research. A variety of methods would be utilized to determine costs. These include estimating guides, contacting contractors and recent project experience. No one method is completely accurate, and a comparison of results will be undertaken to establish a reasonable cost range. Regional and inflationary cost factors will also be considered.

Design Development Phase

Utilizing the approved Scope of Work, the Design Team shall begin the Design Development Phase with a review of any work completed previously to date. We will review alternative approaches to the work, and then establish all / any sustainability goals for the project. An update of the Initial Project Budget included in Programming and Schematic Design will be used to develop an Initial Project Schedule, in coordination of the requirements of the City. Overall Project Goals and critical dates will be established. We will work closely with the City to ensure this is coordinated with our construction professionals.

The Design Development Phase shall further develop and refine the approved scope / design by increasing the level of detail and performing a more detailed scope of work:

- Establish initial materials and finish products with recommended products and approved equals
- Maximize sustainability practices in conjunction with new parking building, utilities, lighting, and landscaping
- All Design decisions shall be made in the interest of providing the best possible functionality, comfort and safety of users
- All decisions shall be made toward providing a positive community experience for users
- Assist in creating a high performance, low maintenance facility, while blending with the existing park
- Work toward increasing visitor safety and minimize City liabilities
- Provide a high-quality, safe environment for users & visitors

Project Staff Team Design Submissions

Throughout the Design Development phase, Meyer Group Architecture shall submit (3) three designs and supporting engineering for comment and review by the City of Superior at the following stages of completion:

- 60% Completion
- 90% Completion
- Final Design

Meyer Group Architecture shall submit all required plans and information to FDL - Development Review Committee prior to 90% design completion. We shall also take a team-based approach with staff and consultant the team during each stage of the design process.

Construction Documents Phase

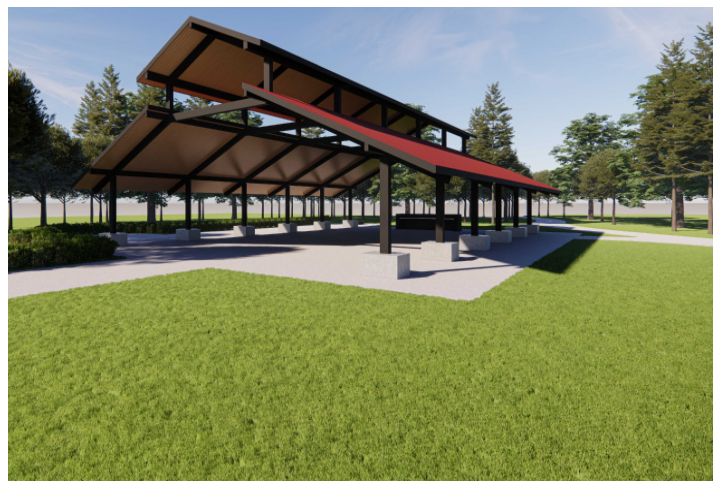
The Construction Documents Phase will continue the precedents of the previous phases of a free-flowing exchange of ideas and reviews, providing technical documentation, in-depth coordination between disciplines and QA/QC process that assures quality Construction Documents.

City of Superior – Presentations

Meyer Group Architecture shall make presentations for the City of Superior. These presentations shall be key in communicating design information to stakeholder groups. Use of 3-D Imaging and color graphics would improve communication to non-professionals who are not accustomed to reviewing detailed documents.

Timeline

Assuming Contract Award on September 26, 2024, the listening meetings would occur during October and November. Programming and planning activities would occur during the first part of December. Design Development would occur during the final weeks of December. Construction Documents would occur during January with deliverables sent to the City by January 31, 2025. The project would be advertised for Bid by February 7, 2025. Construction would commence in May 2025 and be completed by October 1, 2025.



A&E Services for Wade Bowl Park Water Play Improvements Design Phase 09/10/24 - Proposed Architectural & Engineering Fees

Proposed Architectural & Engineering Fees

Schematic Design thru Contract Documents Phase	\$70,000.00
Bid thru Construction Administration Phase	\$ Hourly Per Standard Rates
Total Proposed A&E Fees	<u>\$70,000.00 Lump Sum</u>

Payment Terms

Would be Standard Payment Terms, with invoicing on the First (1st) of the Month with Payments being made on the Thirtieth (30th) of the Month. Other terms are possible, dependent on agreement of all project partners.

Reimbursable Expenses

Estimated Reimbursable Expenses

Reimbursable Expenses would include printing, copying and any additional presentation materials required beyond those listed. Mileage, lodging & subsistence for travel outside of the Duluth-Superior Metro Area / Twin Cities Area / Ashland Area would also be additional.

A Reimbursable Budget will be prepared based on the following:

Estimated Reimbursable Expenses

Mileage	\$1,000 (To be tracked actual miles)
Printing	\$2,000 (0 if electronic files)
Presentation Materials	\$ TBD (0 if electronic files)
Subsistence	\$ TBD (If needed)
Travel	\$ See Mileage
Lodging	\$ 0 (None anticipated)
Land Surveying	\$ Not Included, By Owner – Not Allowed by Liability Insurance
Soils Testing	\$ Not Included, By Owner – Not Allowed by Liability Insurance
Environmental Survey & Testing	\$ Not Included – Not Allowed by Liability Insurance
Total Projected Reimbursable Expenses	\$670 Included in Total Proposed Lump Sum – Not to Exceed

Additional Services Any Additional Services beyond the Basic Scope of Services outlined above will be performed only upon your instruction and will be billed at the standard hourly rates as listed below. Additional work scope can be added by request. A fee proposal & contract amendment will be prepared.



ASHLAND OFFICE
 1022 Lakeshore Drive
 Ashland, WI 54806
 P: (715) 292-6493

DULUTH OFFICE
 306 West Superior Street,
 Suite #1600
 Duluth, MN 55802
 P: (218) 727-1330

MINNETONKA OFFICE
 12450 Wayzata Blvd, Suite
 #227
 Minnetonka, MN 55305
 P: (218) 727-1330

2024 – Standard Hourly Rates

Principal Architect	\$ 195.00 /Hr
Project Architect	\$ 160.00 /Hr
Project Manager	\$ 155.00 /Hr
Landscape Architect	\$ 145.00/Hr
Project Designer	\$ 115.00 /Hr
Interior Designer	\$ 105.00 /Hr
Intern/Designer 1	\$ 95.00/Hr
Intern/Designer 2	\$ 105.00/Hr
Intern/Designer 3	\$ 115.00/Hr
Planner	\$ 105.00/Hr
Grant-writer	\$ 85.00/Hr
CAD Technician 1	\$ 95.00 /Hr
CAD Technician 2	\$ 105.00/Hr
Senior CAD Technician	\$ 110.00/Hr
3-D Technician	\$ 105.00 /Hr
Graphic Designer	\$ 95.00 /Hr
Clerical	\$ 70.00 /Hr

Reimbursable Expenses:

Expenses connected with the work such as travel, vehicle rental, equipment rental, subsistence, lodging, etc., will be charged at cost. Outside consultants, soil testing service, etc. will be charged at cost plus 10%. Vehicle mileage will be charged at \$0.62 per mile, if required.

Rates Effective: 1/1/2024

MOORE ENGINEERING, INC.
2024 BILLING SCHEDULE

Effective January 1, 2024

NOTE: Rates contained in this Billing Schedule are valid until December 31, 2024. After December 31, 2024, Hourly Billing Rates will be escalated annually and direct expenses may be adjusted to meet market conditions.

	<u>Description</u>	<u>Billing Rate Per Hour</u>
1	Principal - SR Project Manager	\$225.00
2	Project Manager - SR PE - SR Technical Advisor	\$215 - \$220
3	Professional Engineer I, II	\$195 - \$205
4	Graduate - Project Engineer	\$165 - \$180
5	Engineering Designer I,II, SR	\$155 - \$180
6	Engineering Technician I, II, III	\$120 - \$145
7	Environmental Scientist I, II, II, SR	\$135 - \$210
8	Environmental Technician Intern, I, II	\$80 - \$120
9	Landscape Architect I, II, SR	\$155 - \$180
10	Project Administrator I, II, III, SR	\$135 - \$155
11	Office Administrator I, II, III, SR	\$115 - \$165
12	CADD Technician I, II, III	\$140 - \$150
13	Senior GIS Coordinator - GIS Manager	\$195 - \$200
14	GIS Analyst - GIS Developer	\$165 - \$180
15	GIS Programmer I,II,III	\$150 - \$170
16	GIS Technician I, II, III	\$140- \$150
17	GIS Specialist I, II, III	\$145 - \$165
18	Land Surveyor - Senior Land Surveyor	\$180 - \$215
19	Survey Manager	\$170.00
20	Survey Crew Chief I, II - Survey Data Analyst	\$150 - \$165
21	Project Coordinator - CADD Standards Coordinator	\$180 - \$200
22	Funding Specialist	\$165.00
23	Survey Technician I,II, III	\$105 - \$120
24	Construction Engineer/Specialist, I, II, SR	\$165 - \$185
25	Administrative Assistant I, II, III	\$95 - \$105

Travel Expenses	Project Mileage	Per current IRS rate per mile	
	Lodging	Cost * 1.15	
	Meals	Cost * 1.15	
	Per Diem	\$60.00	per day
Survey Supplies	Iron Pins	\$1.25	each
	Fence Posts	\$5.00	each
	Motorized Offroad Vehicles Drone Equipment	\$75.00	per day
Miscellaneous	Project Expenses	Cost * 1.15	
	Sub Consultants	Cost * 1.15	



WORLD LEADERS IN AQUATIC PLANNING, DESIGN AND ENGINEERING

2024 HOURLY RATES

Principal/Director	\$250.00
Project Manager/Engineer	\$185.00
Creative Studio	\$160.00
Project Design	\$145.00
Mechanical Design	\$170.00
Technical Design	\$105.00
Administrative	\$75.00



collaborāte / formulāte / innovāte

The Avenue
 275 West Wisconsin Avenue, Suite 300
 Milwaukee, WI 53203
 414 / 259 1500
 414 / 259 0037 fax
 www.graef-usa.com

PROFESSIONAL SERVICES 2024 FEE SCHEDULE (effective January 1, 2024)

CLASSIFICATION	RATE
Senior Group Manager (P9)	\$ 247.00
Group Manager (P8)	\$ 226.00
Senior Professional (P7)	\$ 215.00
Professional (P6)	\$ 205.00
Professional (P5)	\$ 194.00
Professional (P4)	\$ 180.00
Professional (P3)	\$ 166.00
Professional (P2)	\$ 150.00
Professional (P1)	\$ 126.00
Senior Technician/Inspector (T6)	\$ 168.00
Senior Technician/Inspector (T5)	\$ 154.00
Senior Technician/Inspector (T4)	\$ 144.00
Technician/Inspector (T3)	\$ 130.00
Technician/Inspector (T2)	\$ 114.00
Technician/Inspector (T1)	\$ 95.00
Survey Crew - 1 Person	\$ 176.00
Survey Crew - 2 Person	\$ 245.00
Administrative	\$ 91.00

Automobile travel will be billed at the current federal rate of 67.0 cents per mile.

Survey vehicles will be billed at 75 cents per mile.

LIDAR scanner will be billed at \$150/hour.

Unmanned Aircraft System (UAS) will be billed at \$75/hour.

Expenses such as travel and supplies will be billed at actual cost.

Contracted services and consultants will be billed at cost plus 5 percent.

7. Subcontractors Listing (Must be submitted with proposal)

Wade Bowl Water play area Design Phase

The undersigned agrees to employ the following listed subcontractors for the following enumerated classes of work and not to alter or add to such list without the written consent of the City of Superior, WI. Use separate sheet as necessary.

	<u>SUBCONTRACTOR</u>	<u>CLASS OF WORK</u>
1)	Moore Engineering	Landscape Architecture
2)	Water Technologies Inc	Water Park Design
3)	Graef	Civil Engineering
4)		
5)		

Submitted by: **COMPANY** Meyer Group Architecture
ADDRESS 1022 Lakeshore Drive, Ashland, WI 54806
COMPANY REPRESENTATIVE Timothy L. Meyer

8. Addenda Acknowledgement (Must be submitted with Proposal)

Wade Bowl Water play area Design Phase

I/we hereby acknowledge receipt of the following addenda(s):

Addendum No. 1 Dated August 26, 2024

Addendum No. _____ Dated _____

Addendum No. _____ Dated _____

Addendum No. _____ Dated _____

I/we further certify that no agreement has been entered into to prevent competition for said work and that I/we carefully examined the site where the work is to take place, and the plans, specifications, form of contract and all other contract documents.

I/we further agree to enter into the contract, as provided in the contract documents, under all the terms, conditions and requirements of those documents.

* If no addenda were issued, the consultant/firm shall so indicate and sign this document.

Meyer Group Architecture

Company

Timothy C. Meyer

Representative Signature

9. Debarment

Certification Regarding Debarment, Suspension, Ineligibility and Voluntary Exclusion-Lower Tier Covered Transactions

This certification is required by the regulations implement Executive Order 12549, Debarment and Suspension, 7 CFR Part 3017, Section 3017.510, Participant's responsibilities. The regulations were published as Part IV of the January 30, 1989 Federal Register (pages 4722-4733). The proposer certifies to the best of its knowledge and believe that it and its principals:

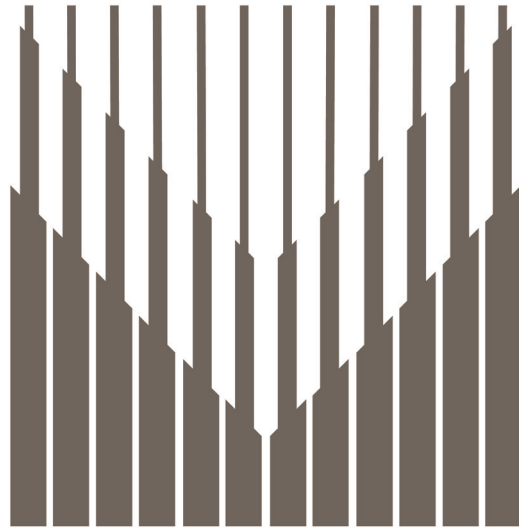
1. Are not presently debarred, proposed for debarment, declared ineligible, or voluntarily excluded from participation in this transaction by any Federal department or agency.
2. Has not within a three-year period preceding this application been convicted of or had a civil judgement rendered against them for commission of fraud or a criminal offense in connection with obtaining, attempting to obtain, or performing a public (Federal, State, or local) transaction or contract under a public transaction; violation of Federal or State antitrust statutes or commission of embezzlement, theft, forgery, bribery, falsification or destruction of records, making false statements, or receiving stolen property.
3. Is not presently indicted for or otherwise criminally or civilly charged by a governmental entity (Federal, State, or local) with commission of any offenses.

Where the prospective lower tier participant is unable to certify any of the statements in this certification, such prospective participant shall attach an explanation to this proposal.

Tim Meyer, AIA, CID, NCARB, LEED AP
Principal Architect & CEO

Signed: Timothy C. Meyer Print Name & Title: _____

Name of Organization: Meyer Group Architecture Date: 9/10/2024



MEYER
GROUP
ARCHITECTURE

RESPECTING OUR CLIENTS. RESPECTING OUR ENVIRONMENT.