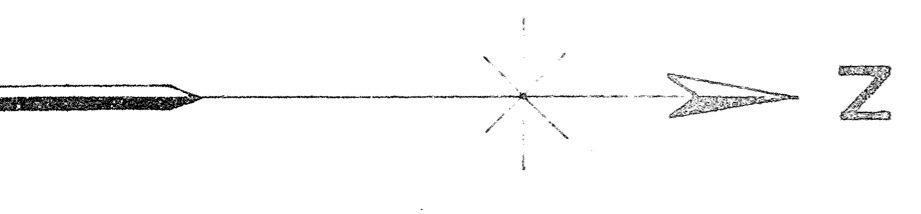
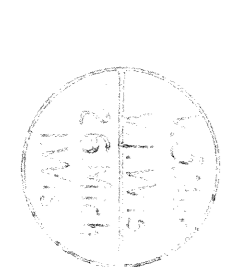


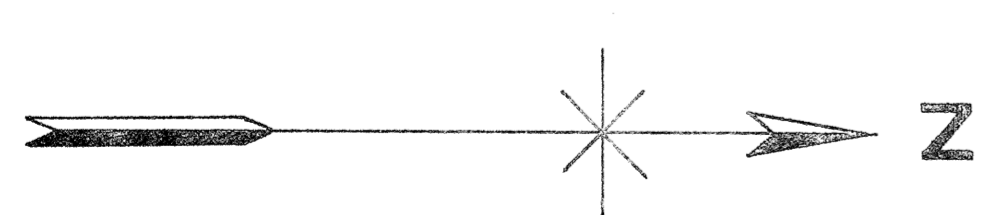
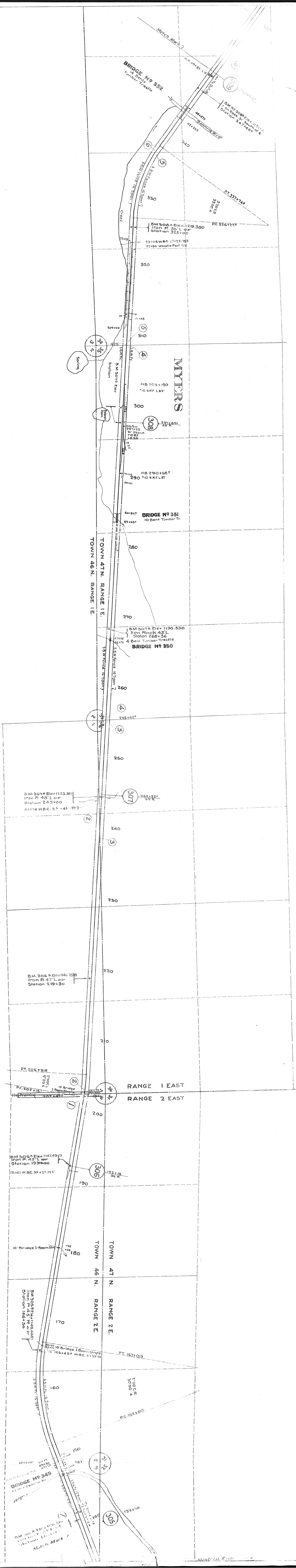
Sheet No. 26 of 37 of Duluth, South Shore and Atlantic
 Railroad, Station 5289+00 to Station 5300+00
 to Station 5300+00 to Station 5300+00
 to Station 5300+00 to Station 5300+00



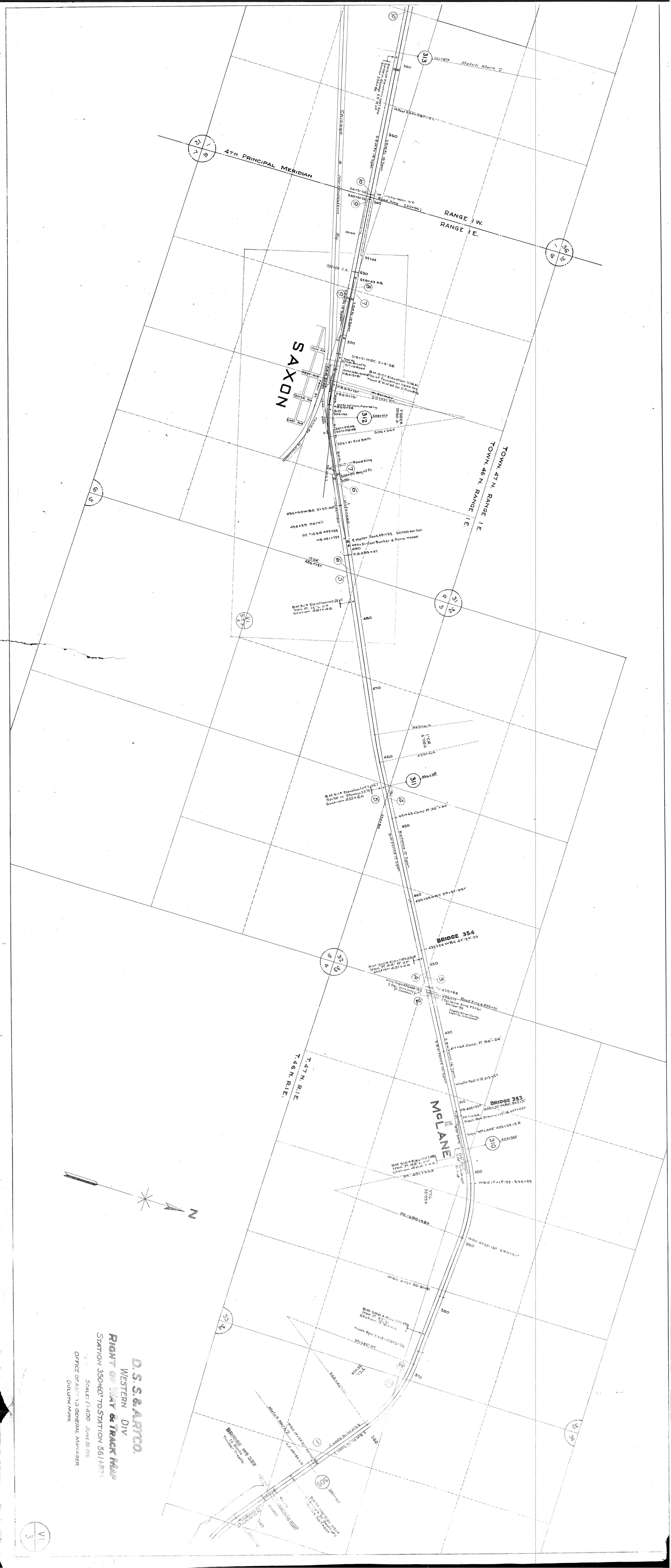
D.S.S. & A. RYCO.
 WESTERN DIV.
RIGHT OF WAY & TRACK MAP
 STATION 5289+00 TO STATION 5300+00
 STATION 0+00 TO STATION 139+38
 SCALE: 1" = 400' JUNE 30, 1916

OFFICE OF ASST. TO GENERAL MANAGER
 DULUTH, MINN.





D. S. S. & A. RYCO.
 WESTERN DIV.
RIGHT OF WAY & TRACK MAP
 STATION 139+38 TO STATION 350+60.7
 SCALE: 1"=400' JUNE 30-1916
 OFFICE OF ASST. TO GENERAL MANAGER
 DULUTH MINN.



4TH PRINCIPAL MERIDIAN

RANGE 1 W.
RANGE 1 E.

SAXON

TOWN 47 N. RANGE 1 E.
TOWN 46 N. RANGE 1 E.

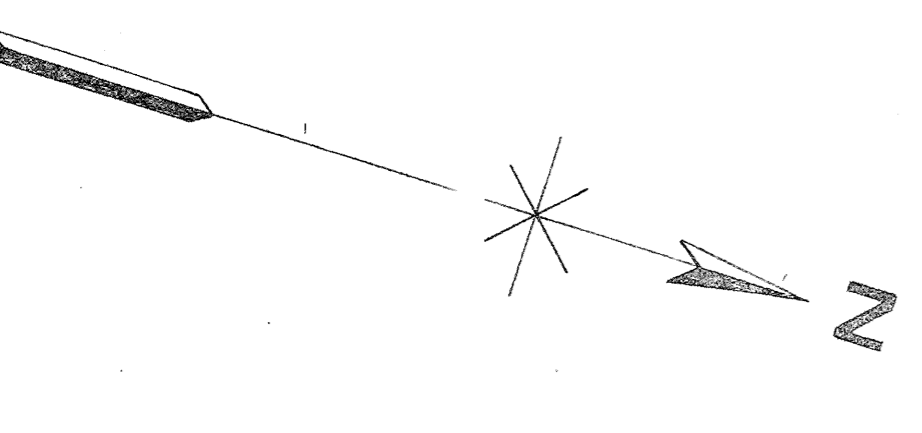
BRIDGE 354

BRIDGE 353

MCLANE

T. 47 N. R. 1 E.
T. 46 N. R. 1 E.

D. S. S. & A. P. CO.
WESTERN DIV.
RIGHT OF WAY & TRACK MAP
STATION 350+60 TO STATION 561+87.5
SCALE: 1" = 400' JUNE 30 1916
OFFICE OF ASST. TO GENERAL MANAGER
DULUTH, MINN.

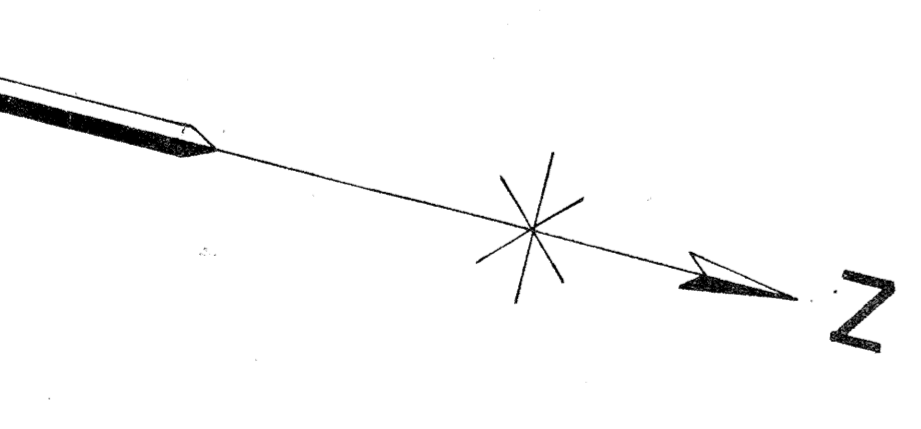


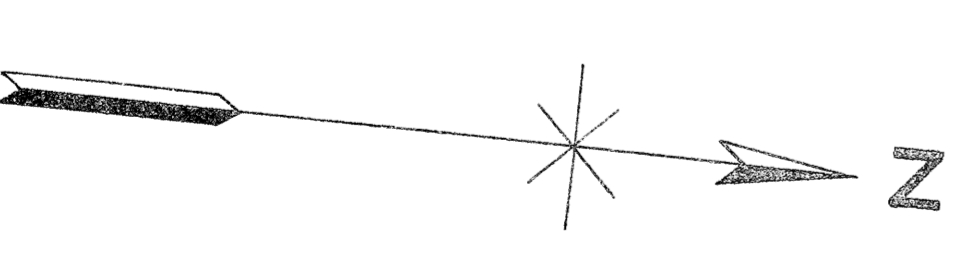
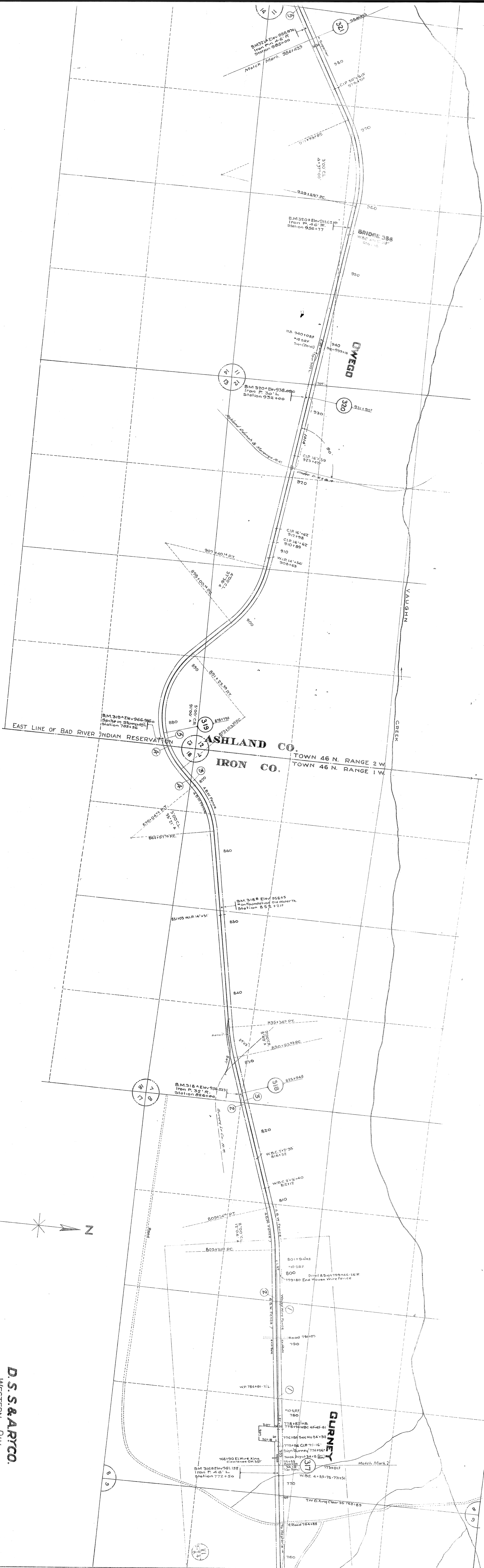
VI



D. S. S. & RYCO.
 WESTERN DIV.
RIGHT OF WAY & TRACK MAP
 STATION 561+87.5 TO STATION 773+101.2

SCALE: 1" = 400' (June 30, 1916)
 OFFICE OF ASST. TO GENERAL MANAGER
 DULUTH, MINN.

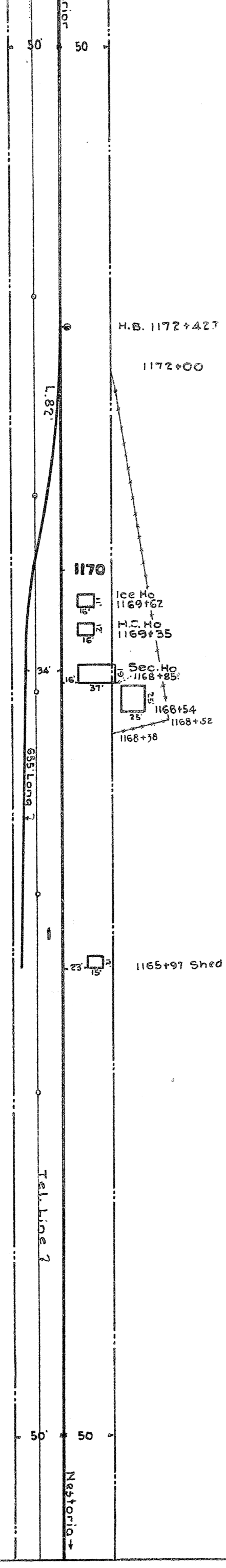




D. S. S. & ARYCO.
 WESTERN DIV.
RIGHT OF WAY & TRACK MAP
 STATION 773+012 TO STATION 984+433

SCALE: 1" = 400' JUNE 30, 1916
 OFFICE OF ASSISTANT TO GENERAL MANAGER
 DULUTH, MINN.

SHILO
Scale: 1"=100'



* 10 RR F.
P.F. 1171+61

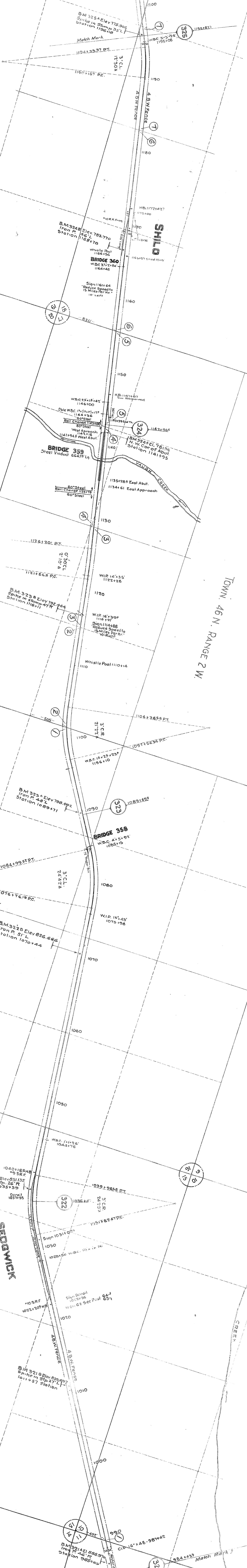
White Post
1166+36

TOWN 46 N. RANGE 2 W.

1170

H.B. 1172+427
1172+00

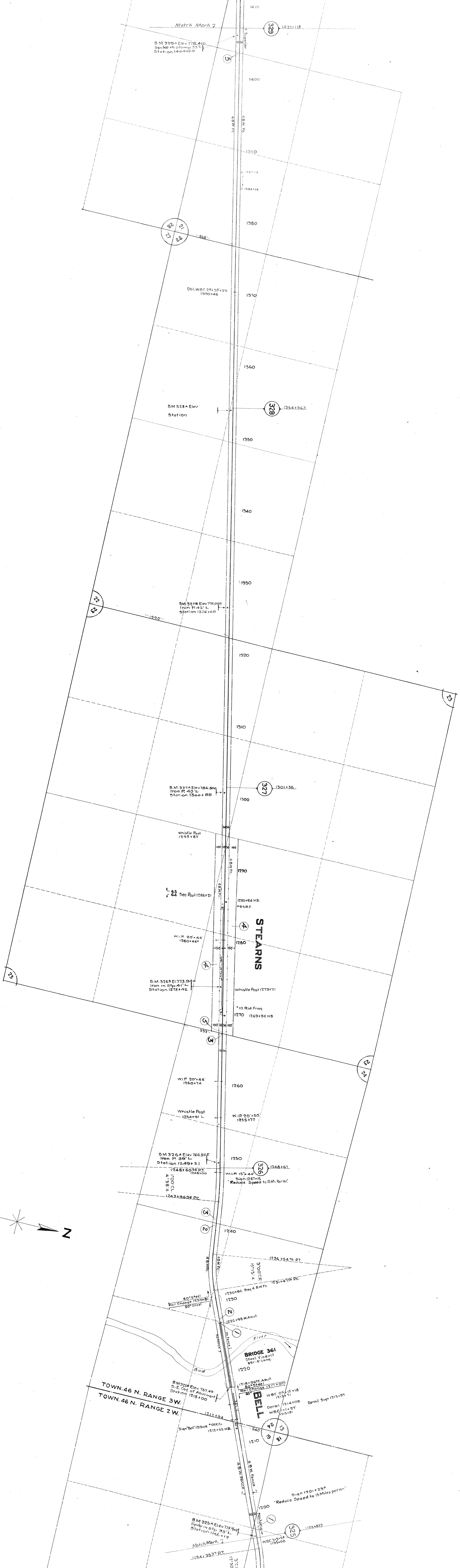
H.B. 1165+97
SHILO



D.S.S. & ARCO
WESTERN DIV.

RIGHT OF WAY & TRACK MAP
STATION 984+37 TO STATION 1195+823

SCALE: 1"=400' - ONE 30-1916
OFFICE OF ASSET TO GENERAL MANAGER
DULUTH MINN.



Match Mark 7
 B.M. 329 A Elev 776.410
 Spike in stump 33' L
 Station 1404+60

B.M. 328 A Elev
 Station

B.M. 327 B Elev 791.625
 Iron Pin 42' L
 Station 1326+60

B.M. 327 A Elev 786.800
 Iron Pin 43' L
 Station 1306+60

B.M. 326 A Elev 766.867
 Iron Pin 39' L
 Station 1249+21

B.M. 325 A Elev 757.49
 S.E. Cor. of Abutment
 Station 1218+00

B.M. 325 A Elev 757.49
 Spike in stump 33' L
 Station 1196+19

B.M. 325 A Elev 757.49
 Spike in stump 33' L
 Station 1196+19

B.M. 325 A Elev 757.49
 Spike in stump 33' L
 Station 1196+19

B.M. 325 A Elev 757.49
 Spike in stump 33' L
 Station 1196+19

B.M. 325 A Elev 757.49
 Spike in stump 33' L
 Station 1196+19

B.M. 325 A Elev 757.49
 Spike in stump 33' L
 Station 1196+19

B.M. 325 A Elev 757.49
 Spike in stump 33' L
 Station 1196+19

B.M. 325 A Elev 757.49
 Spike in stump 33' L
 Station 1196+19

B.M. 325 A Elev 757.49
 Spike in stump 33' L
 Station 1196+19

B.M. 325 A Elev 757.49
 Spike in stump 33' L
 Station 1196+19

B.M. 325 A Elev 757.49
 Spike in stump 33' L
 Station 1196+19

B.M. 325 A Elev 757.49
 Spike in stump 33' L
 Station 1196+19

B.M. 325 A Elev 757.49
 Spike in stump 33' L
 Station 1196+19

B.M. 325 A Elev 757.49
 Spike in stump 33' L
 Station 1196+19

B.M. 325 A Elev 757.49
 Spike in stump 33' L
 Station 1196+19

B.M. 325 A Elev 757.49
 Spike in stump 33' L
 Station 1196+19

B.M. 325 A Elev 757.49
 Spike in stump 33' L
 Station 1196+19

B.M. 325 A Elev 757.49
 Spike in stump 33' L
 Station 1196+19

B.M. 325 A Elev 757.49
 Spike in stump 33' L
 Station 1196+19

B.M. 325 A Elev 757.49
 Spike in stump 33' L
 Station 1196+19

B.M. 325 A Elev 757.49
 Spike in stump 33' L
 Station 1196+19

B.M. 325 A Elev 757.49
 Spike in stump 33' L
 Station 1196+19

B.M. 325 A Elev 757.49
 Spike in stump 33' L
 Station 1196+19

B.M. 325 A Elev 757.49
 Spike in stump 33' L
 Station 1196+19

B.M. 325 A Elev 757.49
 Spike in stump 33' L
 Station 1196+19

B.M. 325 A Elev 757.49
 Spike in stump 33' L
 Station 1196+19

B.M. 325 A Elev 757.49
 Spike in stump 33' L
 Station 1196+19

B.M. 325 A Elev 757.49
 Spike in stump 33' L
 Station 1196+19

B.M. 325 A Elev 757.49
 Spike in stump 33' L
 Station 1196+19

B.M. 325 A Elev 757.49
 Spike in stump 33' L
 Station 1196+19

B.M. 325 A Elev 757.49
 Spike in stump 33' L
 Station 1196+19

B.M. 325 A Elev 757.49
 Spike in stump 33' L
 Station 1196+19

B.M. 325 A Elev 757.49
 Spike in stump 33' L
 Station 1196+19

B.M. 325 A Elev 757.49
 Spike in stump 33' L
 Station 1196+19

B.M. 325 A Elev 757.49
 Spike in stump 33' L
 Station 1196+19

B.M. 325 A Elev 757.49
 Spike in stump 33' L
 Station 1196+19

B.M. 325 A Elev 757.49
 Spike in stump 33' L
 Station 1196+19

B.M. 325 A Elev 757.49
 Spike in stump 33' L
 Station 1196+19

B.M. 325 A Elev 757.49
 Spike in stump 33' L
 Station 1196+19

B.M. 325 A Elev 757.49
 Spike in stump 33' L
 Station 1196+19

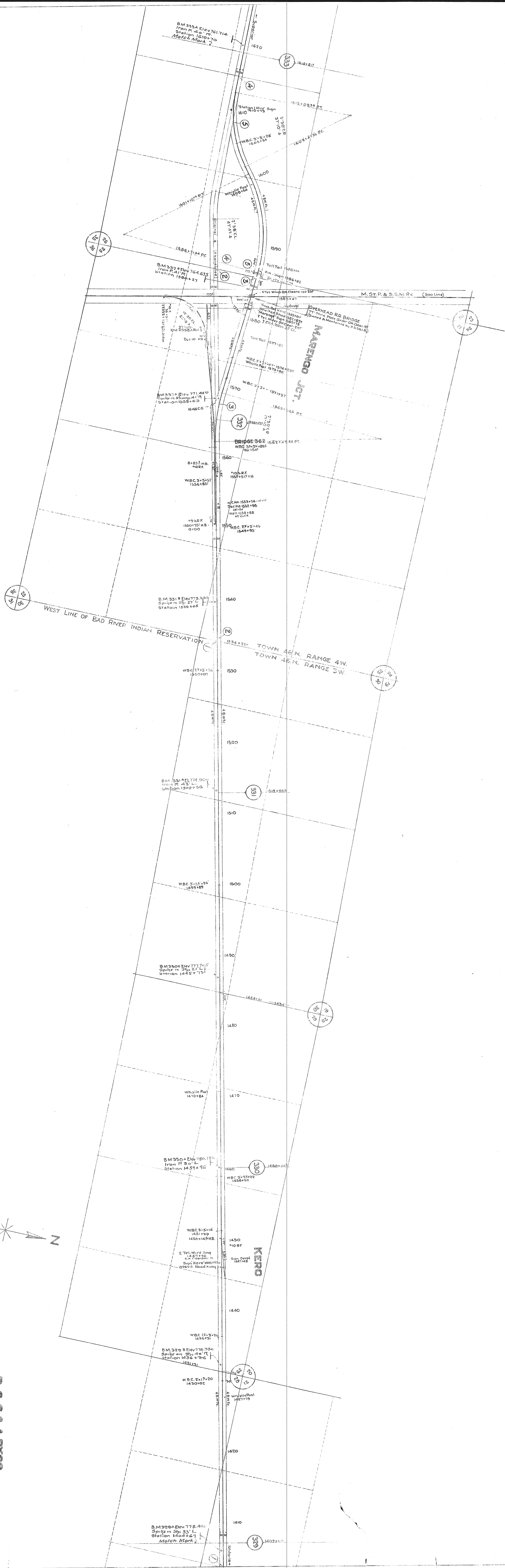
B.M. 325 A Elev 757.49
 Spike in stump 33' L
 Station 1196+19

B.M. 325 A Elev 757.49
 Spike in stump 33' L
 Station 1196+19

B.M. 325 A Elev 757.49
 Spike in stump 33' L
 Station 1196+19

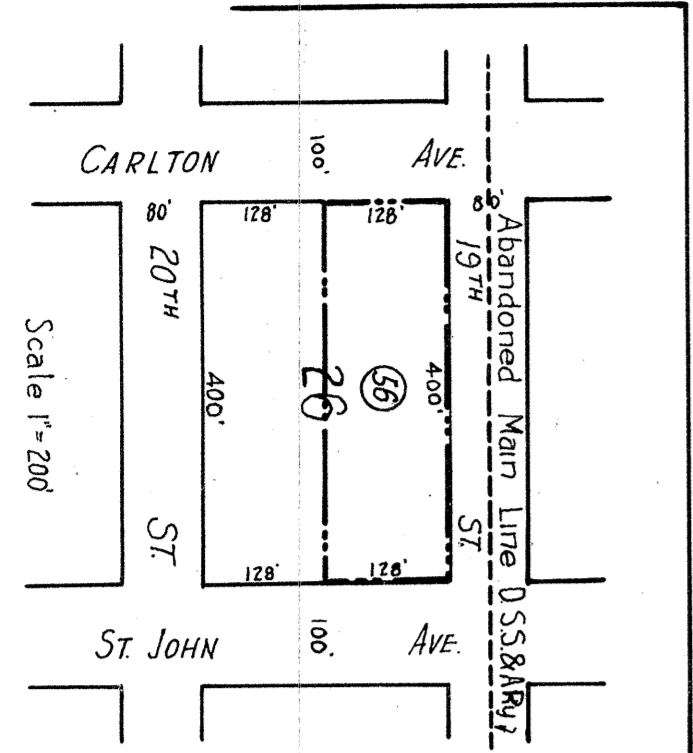
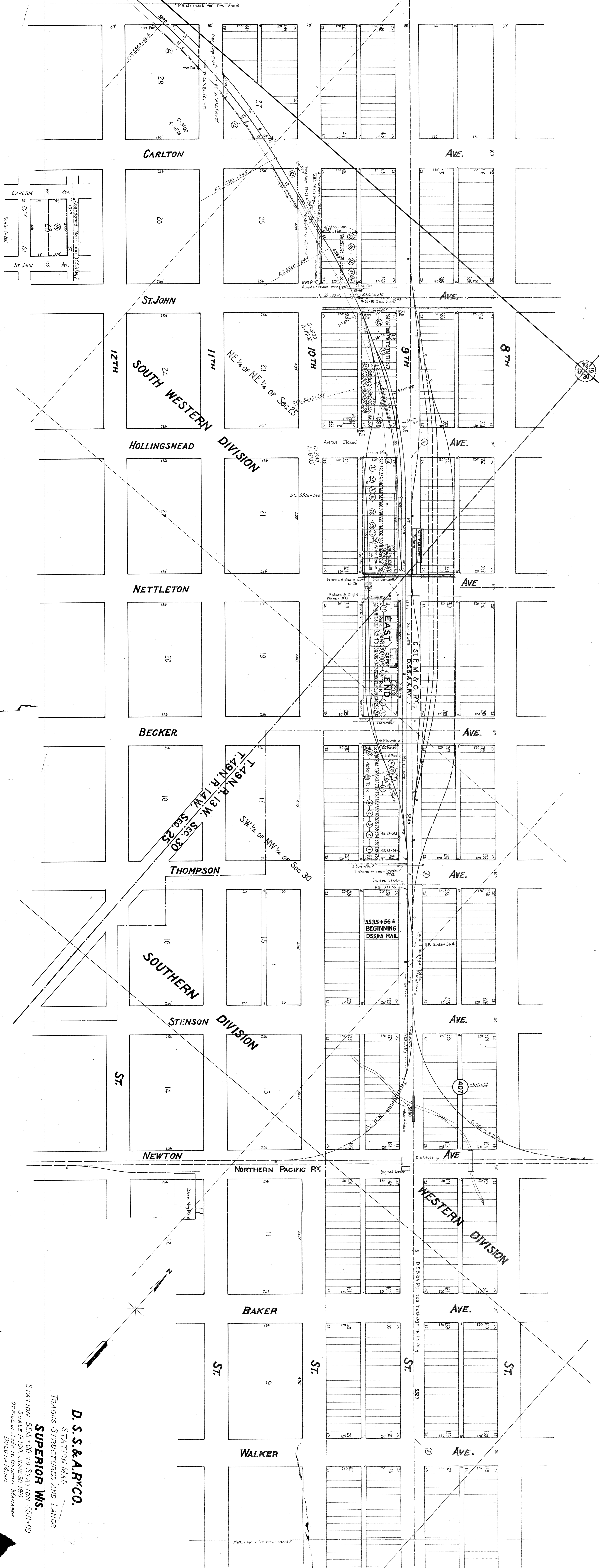
D. S. S. & ARYCO.
 WESTERN DIV
RIGHT OF WAY & TRACK MAP
 STATION 1195+82.3 TO STATION 1407+11.8
 SCALE: 1" = 400' JUNE 30, 1916
 OFFICE OF ASST. TO GENERAL MANAGER
 DULUTH, MINN.

VI
 7



D. S. & ARYCO.
 WESTERN DIV.
RIGHT OF WAY & TRACK MAP
 STATION 1407+11.8 TO STATION 1618+81.5
 SCALE: 1" = 400' June 30, 1916
 OFFICE OF ASST. TO GENERAL MANAGER
 DULUTH, MINN.

Match mark for next sheet



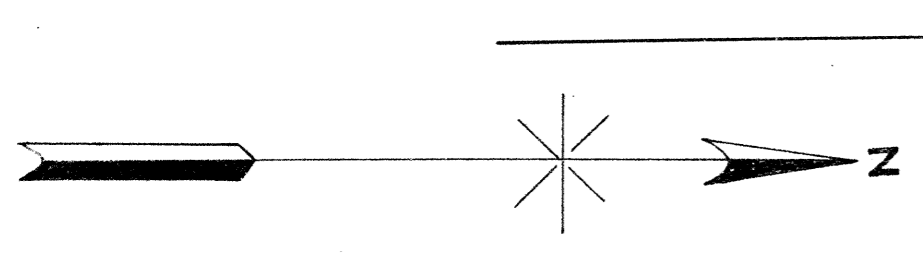
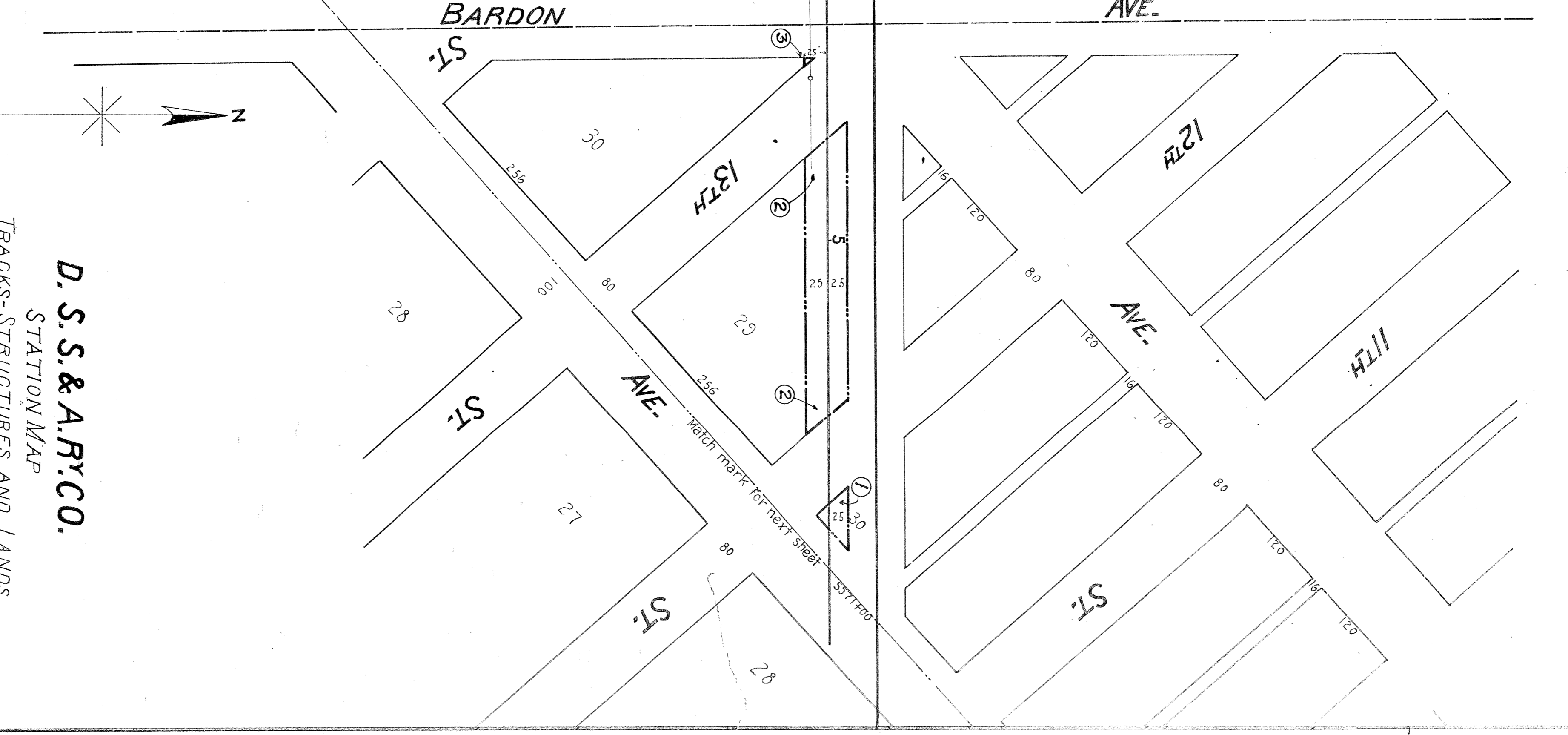
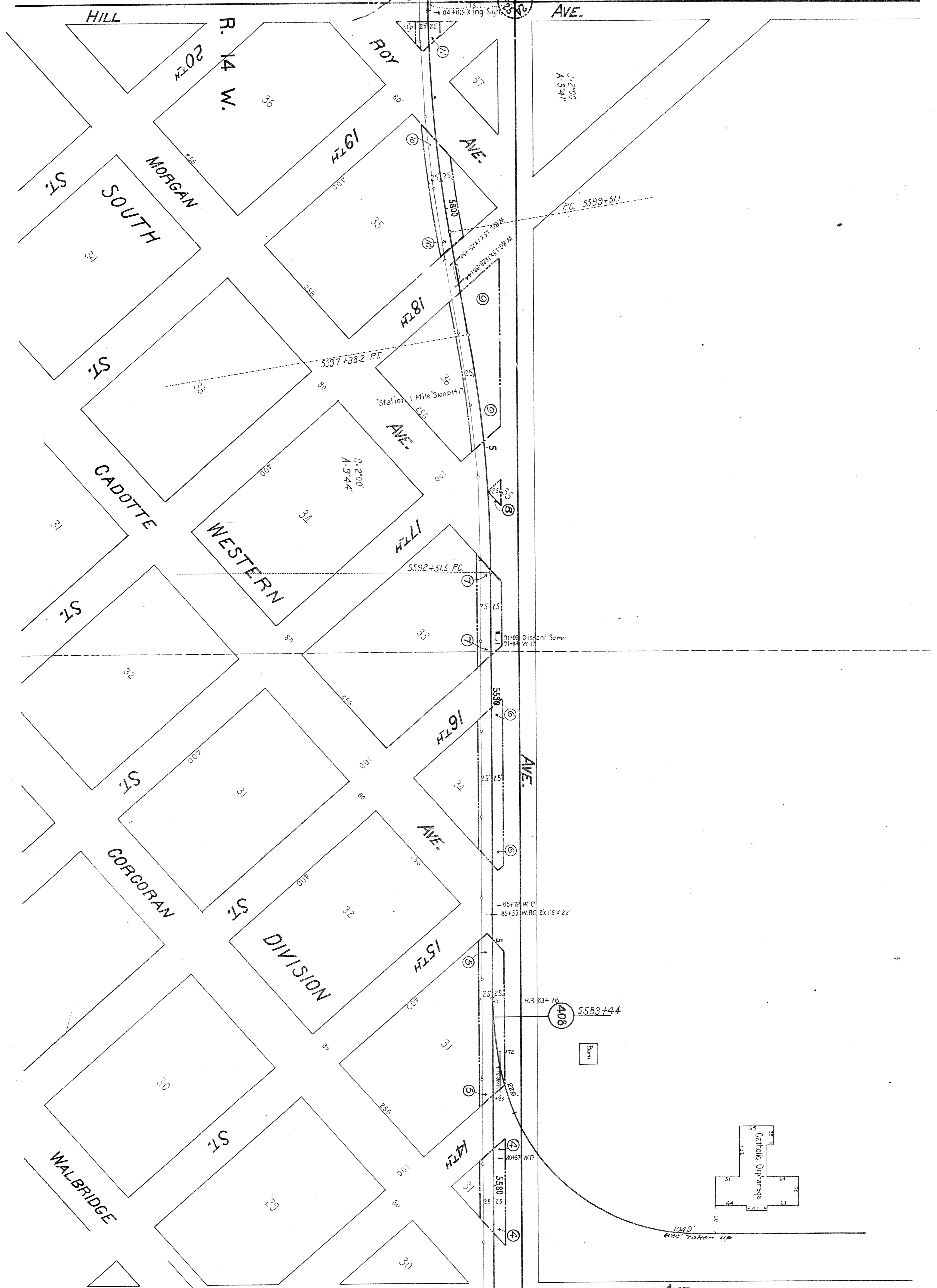
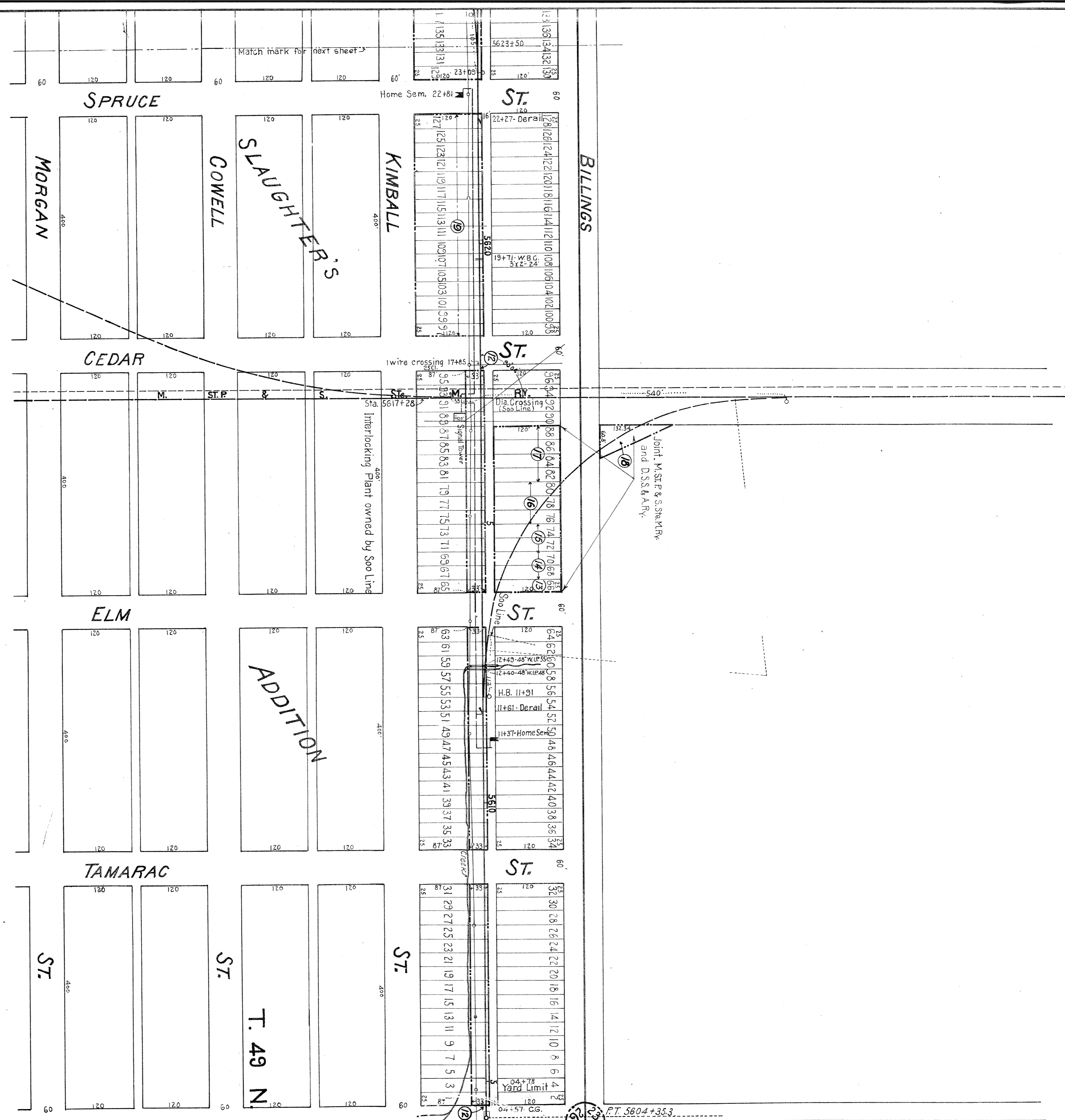
D. S. S. & A. RY. CO.

STATION MAP
TRACKS, STRUCTURES AND LANDS

SUPERIOR WIS.

STATION 5515+00 TO STATION 5511+00
SCALE 1"=100' JUNE 30 1916
OFFICE OF ASST. TO GENERAL MANAGER
DULUTH MINN.

Match Mark for next sheet



D. S. S. & A. R. Y. CO.
 STATION MAP
 TRACKS, STRUCTURES AND LANDS
SUPERIOR WIS.
 STATION 5571+00 TO STATION 5623+50
 SCALE 1"=100' JUNE 30, 1916
 OFFICE OF ASST. TO GENERAL MANAGER
 DULUTH, MINN.

Match Mark for Next Sheet

5734

END OF D.S.S.&A.RY RAIL

L.S.T.&T.RY

N.P.RY

N.P. Turnout

N.P. Turnout

N.P. Turnout

NORTHERN PACIFIC RY

1/2 Sec Line

1/2 Sec Line

1/2 Sec Line

1/2 Sec Line

1/2 Sec Line

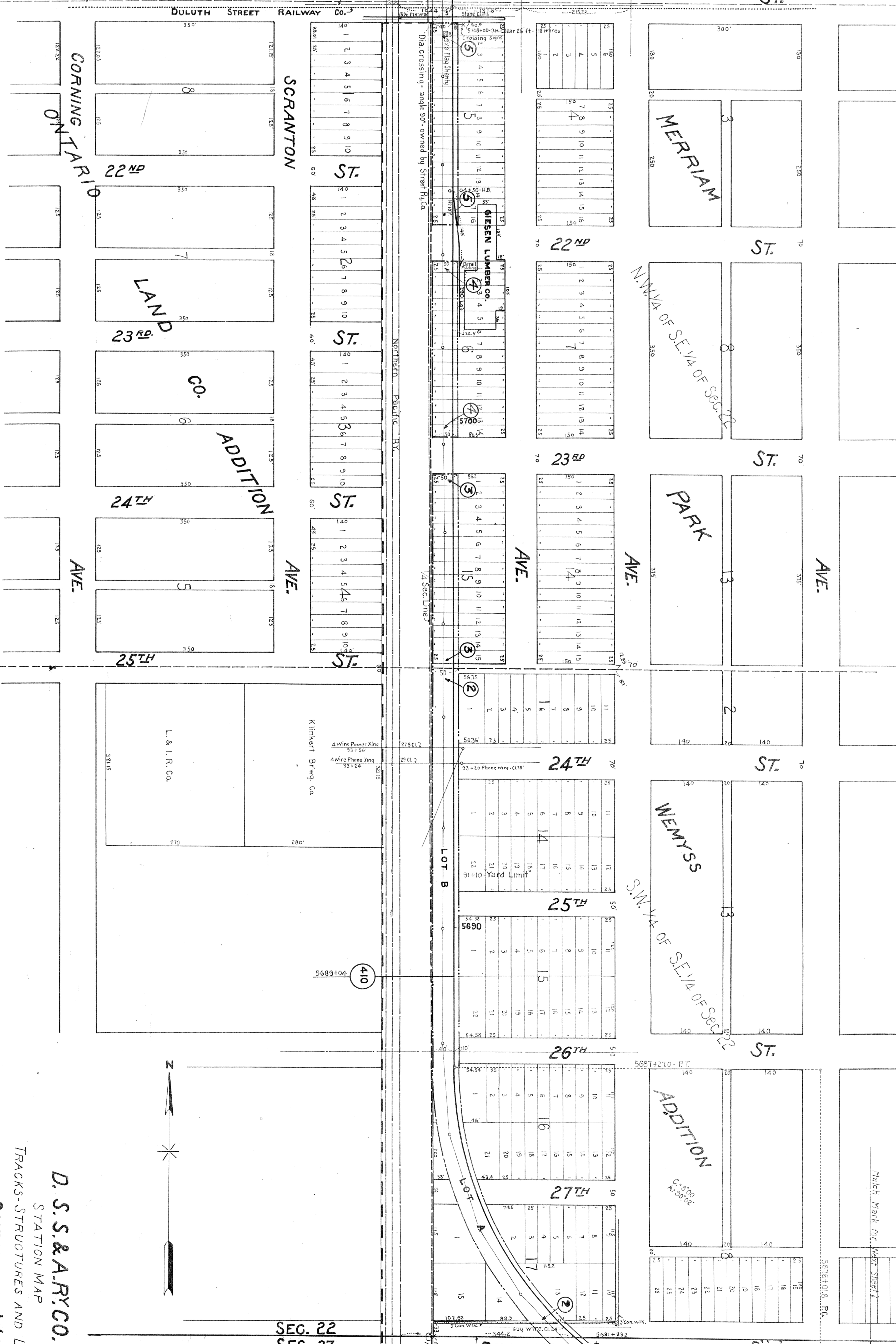
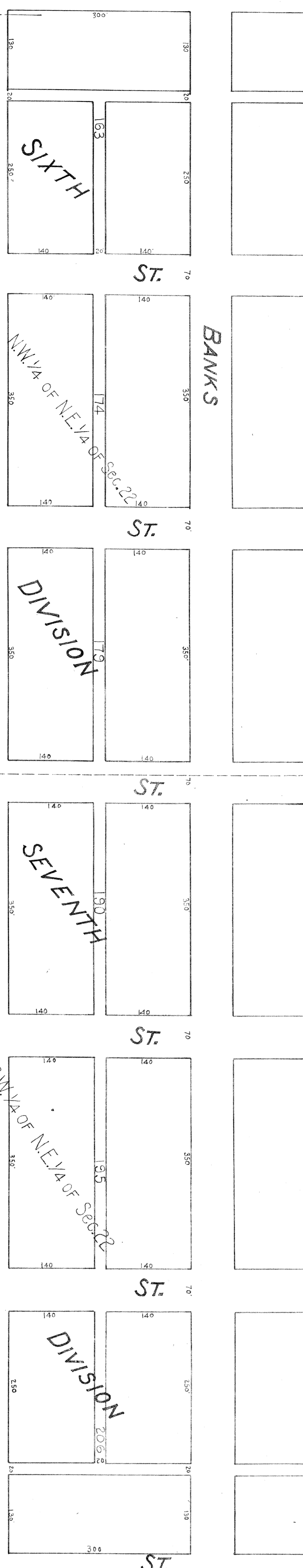
1/2 Sec Line

1/2 Sec Line

NORTHERN

PACIFIC R.R.

GREAT NORTHERN RY.



D. S. S. & A. RY CO.

STATION MAP

TRACKS-STRUCTURES AND LANDS

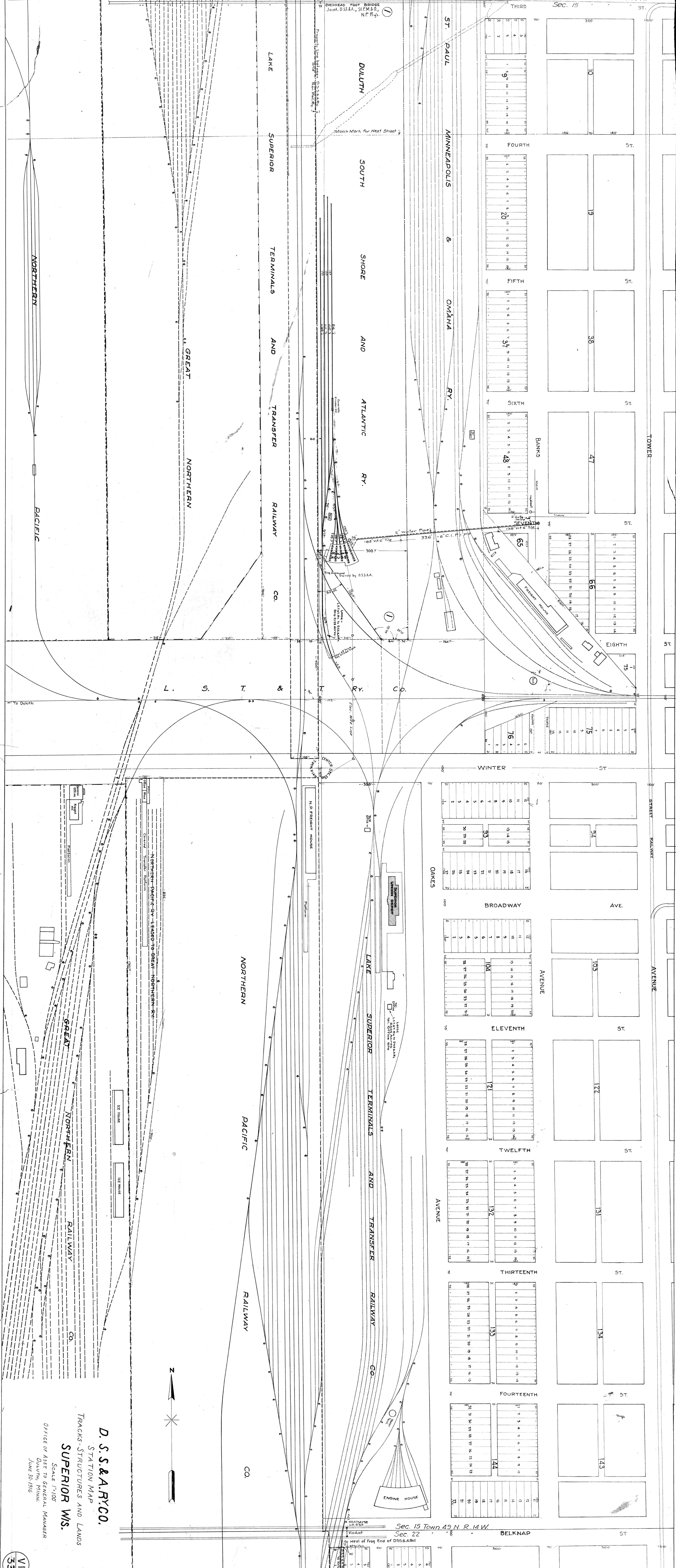
SUPERIOR WS.

STATION 5675+00 TO STATION 5734+00

SCALE 1"=100' JUNE 30, 1916

OFFICE OF ASST TO GENERAL MANAGER DULUTH, MINN.

Section Unit 3-300-
Overhead Foot Bridge
Joint D.S.S.A., S.F.M.S.D.,
N.F.R. 4 1/2



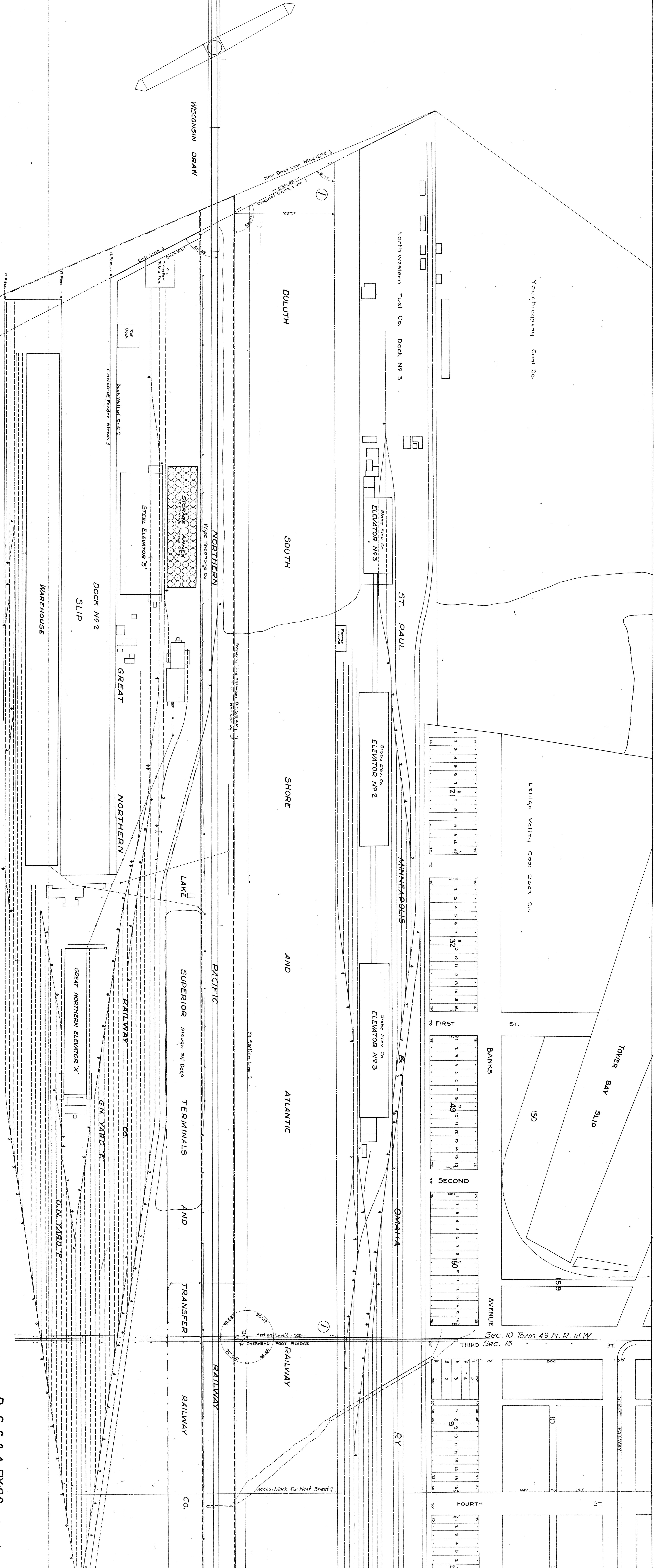
D. S. S. & A. RY. CO.
STATION MAP
TRACKS - STRUCTURES AND LANDS
SUPERIOR W.S.
Scale 1"=100'
OFFICE OF ASST. TO GENERAL MANAGER
DULUTH, MINN.
JUNE 30, 1916

Sec. 15 Town 49 N. R. 14 W.
Sec. 22

ST.

LOUIS

BAY



D. S. S. & A. RY. CO.
 STATION MAP
 TRACKS, STRUCTURES AND LANDS
SUPERIOR WIS.
 Scale 1" = 100'
 OFFICE OF ASST. TO GENERAL MANAGER
 DULUTH, MINN.
 June 30, 1918

