

# Classified Point Cloud

## Deliverable 1 Summary

|   |   |                         |
|---|---|-------------------------|
| <b>✓ General</b>                              |   |                         |
| Folder:                                       | E:\WI_12County_10_B22_230110_Douglas\300213\point_cloud\tilecls |                         |
| Total # of Files:                             | 1,913   | (All Valid)             |
| Total File Size:                              | 650.0 GB  | (697,957,428,916 bytes) |
| <b>✓ Tile Sizes / Coordinate Ranges</b>       |   |                         |
| Median Tile Size:                             | 4,500' x 4,500'   |                         |
| Minimum Tile Size:                            | 82' x 32'   |                         |
| Maximum Tile Size:                            | 4,500' x 4,500'   |                         |
| X Range:                                      | 98236.76' to 286921.98'   |                         |
| Y Range:                                      | 99545.09' to 319166.54'   |                         |
| Elevation Range (All Classes):                | -276.72' to 5413.61'  |                         |
| <b>✓ LAS Version And Point Record Formats</b> |   |                         |
| v1.4, Point Record Format 6                   |   | 1,913 of 1,913 Tiles    |
| <b>✓ Spatial Reference System</b>             |   |                         |
| Horizontal Projection                         | NAD83(2011) / WISCRS Douglas (ftUS)                             | 1,913 of 1,913 Tiles    |
| Valid OGC Name                                | Yes   | 1,913 of 1,913 Tiles    |
| Horizontal Datum                              | NAD83 (National Spatial Reference System 2011)                  | 1,913 of 1,913 Tiles    |
| Horizontal Units                              | US survey foot  | 1,913 of 1,913 Tiles    |
| Vertical Datum                                | NAVD88 height (ftUS) - Geoid18 (ftUS)                           | 1,913 of 1,913 Tiles    |
| Vertical Units                                | US survey foot  | 1,913 of 1,913 Tiles    |
| Vertical USGS-Compliant                       | Yes   | 1,913 of 1,913 Tiles    |
| Geoid   | Geoid18   | 1,913 of 1,913 Tiles    |
| Storage Method                                | WKT   | 1,913 of 1,913 Tiles    |
| Matches OGC Template                          | Yes   | 1,913 of 1,913 Tiles    |
| <b>✓ GPS Time Type</b>                        |   |                         |
| Adjusted                                      |   | 1,913 of 1,913 Tiles    |
| <b>✓ File Source ID Equals 0</b>              |   |                         |
| Yes   |   | 1,913 of 1,913 Tiles    |
| <b>✓ VLR/EVLR Reserved Equals 0</b>           |   |                         |
| Yes   |   | 3,826 of 3,826 Records  |
| <b>✓ Unnecessary Bytes At End Of File</b>     |   |                         |
| No  |   | 1,913 of 1,913 Tiles    |
| <b>✓ Legacy Point Count Check</b>             |   |                         |
| Zero  |   | 1,913 of 1,913 Tiles    |
| <b>✓ System Identifier</b>                    |   |                         |
| Merge   |   | 1,913 of 1,913 Tiles    |

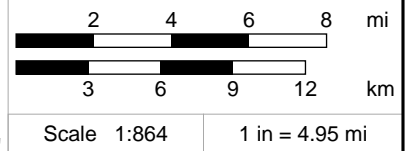
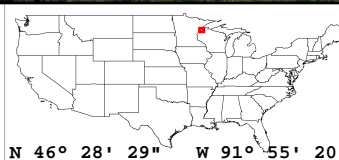
# Classified Point Cloud Continued...

## Deliverable 1 Summary

|                              |                      |
|------------------------------|----------------------|
| ✓ <b>Generating Software</b> |                      |
| NV5G LiDAR Suite             | 1,913 of 1,913 Tiles |
| ✓ <b>Scale Factors</b>       |                      |
| 0.01, 0.01, 0.01             | 1,913 of 1,913 Tiles |



Classified LAS Tiles (1,913)

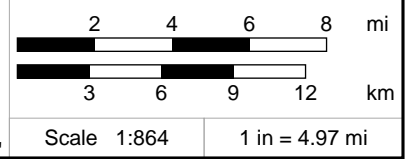
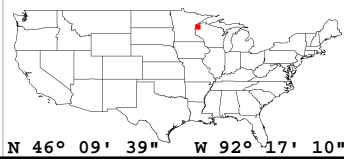
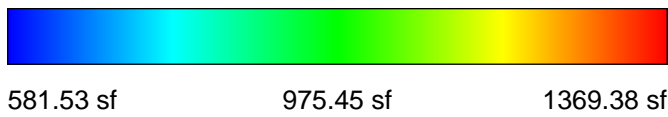
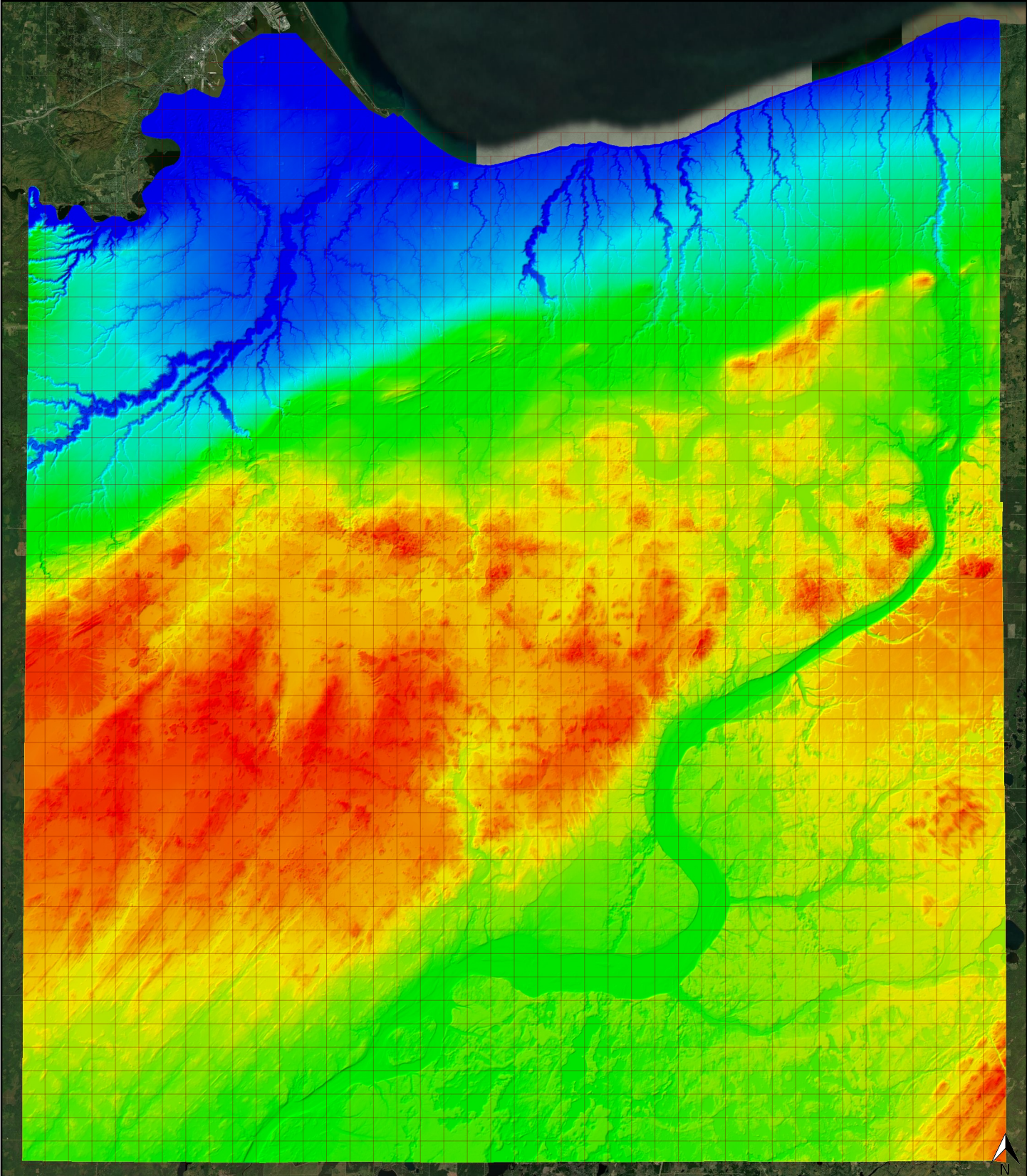


| ✓ General         |   |             |
|-------------------|---|-------------|
| Folder:           | E:\WI_12County_10_B22_230110_Douglas\300213\bare_earth\be_rasters |             |
| Total # of Files: | 1,913   | (All Valid) |
| Total File Size:  | 147.2 GB (158,078,604,788 bytes)                                  |             |

| ✓ Tile Sizes / Coordinate Ranges |                         |  |
|----------------------------------|-------------------------|--|
| Median Tile Size:                | 4,500' x 4,500'         |  |
| Minimum Tile Size:               | 4,500' x 4,500'         |  |
| Maximum Tile Size:               | 4,500' x 4,500'         |  |
| X Range:                         | 98080.00' to 287080.00' |  |
| Y Range:                         | 99190.00' to 319690.00' |  |

| ✓ Spatial Reference System    |   |                      |
|-------------------------------|---|----------------------|
| Horizontal Projection         | NAD83(2011) / WISCRS Douglas (ftUS)   | 1,913 of 1,913 Tiles |
| Valid OGC Name                | Yes   | 1,913 of 1,913 Tiles |
| Horizontal Datum              | NAD83 (National Spatial Reference System 2011)                              | 1,913 of 1,913 Tiles |
| Horizontal Units              | US survey foot  | 1,913 of 1,913 Tiles |
| Vertical Datum                | NAVD88 height (ftUS) - Geoid18 (ftUS)                                       | 1,913 of 1,913 Tiles |
| Vertical Units                | US survey foot  | 1,913 of 1,913 Tiles |
| Vertical USGS-Compliant       | Yes   | 1,913 of 1,913 Tiles |
| GDAL 2.x Compatible           | Yes   | 1,913 of 1,913 Tiles |
| Geoid                         | Geoid18   | 1,913 of 1,913 Tiles |
| Matches OGC Template          | Yes   | 1,913 of 1,913 Tiles |
| GTCitationGeoKey (1026)       | NAD83(2011) / WISCRS Douglas (ftUS) + NAVD88 height (ftUS) - Geoid18 (ftUS) | 1,913 of 1,913 Tiles |
| VerticalCitationGeoKey (4097) | NAVD88 height (ftUS) - Geoid18 (ftUS)                                       | 1,913 of 1,913 Tiles |

| ✓ Raster            |                           |                |
|---------------------|---------------------------|----------------|
| File Type:          | TIF                       | 1,913 of 1,913 |
| Bands:              | 1                         | 1,913 of 1,913 |
| Grid Size (pixels): | 4500 x 4500               | 1,913 of 1,913 |
| Pixel Resolution:   | 1.00000000' x 1.00000000' | 1,913 of 1,913 |
| Pixel Type:         | 32-bit                    | 1,913 of 1,913 |
| Compression:        | None                      | 1,913 of 1,913 |
| No Data Value:      | -999999                   | 1,913 of 1,913 |

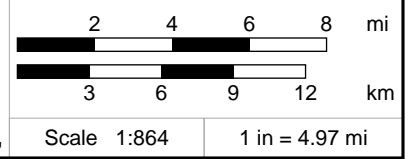
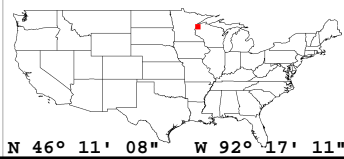
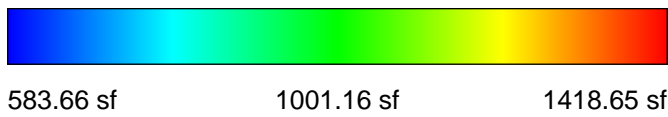
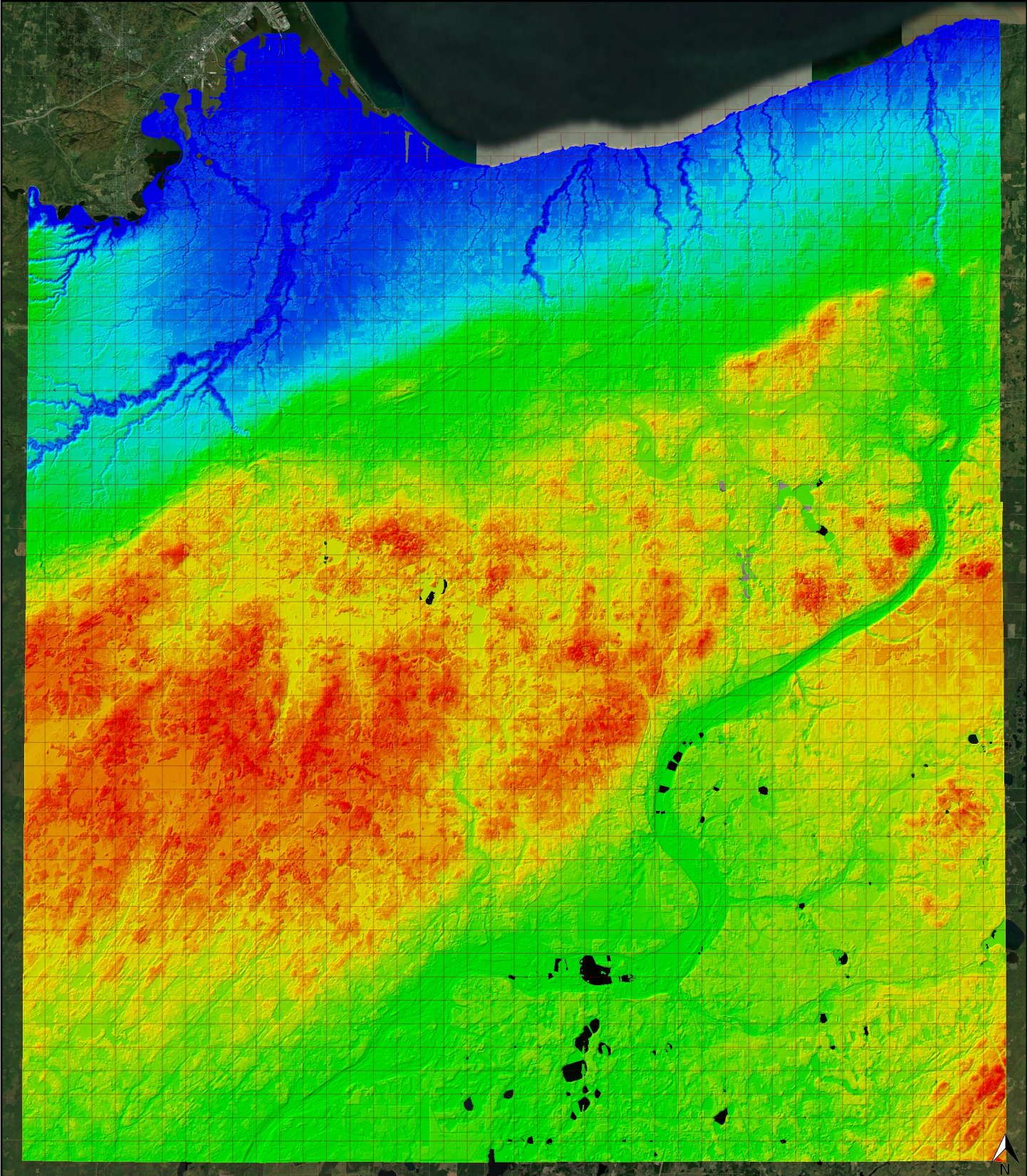


| ✓ General         |   |
|-------------------|---|
| Folder:           | E:\WI_12County_10_B22_230110_Douglas\300213\metadata\spatial_metadata\contractor_provided\maximum_surface_height_raster |
| Total # of Files: | 1,913 (All Valid)   |
| Total File Size:  | 37.9 GB (40,643,284,268 bytes)  |

| ✓ Tile Sizes / Coordinate Ranges |                         |
|----------------------------------|-------------------------|
| Median Tile Size:                | 4,500' x 4,500'         |
| Minimum Tile Size:               | 4,500' x 4,500'         |
| Maximum Tile Size:               | 4,500' x 4,500'         |
| X Range:                         | 98080.00' to 287080.00' |
| Y Range:                         | 99190.00' to 319690.00' |

| ✓ Spatial Reference System    |   |                      |
|-------------------------------|---|----------------------|
| Horizontal Projection         | NAD83(2011) / WISCRS Douglas (ftUS)   | 1,913 of 1,913 Tiles |
| Valid OGC Name                | Yes   | 1,913 of 1,913 Tiles |
| Horizontal Datum              | NAD83 (National Spatial Reference System 2011)                              | 1,913 of 1,913 Tiles |
| Horizontal Units              | US survey foot  | 1,913 of 1,913 Tiles |
| Vertical Datum                | NAVD88 height (ftUS) - Geoid18 (ftUS)                                       | 1,913 of 1,913 Tiles |
| Vertical Units                | US survey foot  | 1,913 of 1,913 Tiles |
| Vertical USGS-Compliant       | Yes   | 1,913 of 1,913 Tiles |
| GDAL 2.x Compatible           | Yes   | 1,913 of 1,913 Tiles |
| Geoid                         | Geoid18   | 1,913 of 1,913 Tiles |
| Matches OGC Template          | Yes   | 1,913 of 1,913 Tiles |
| GTCitationGeoKey (1026)       | NAD83(2011) / WISCRS Douglas (ftUS) + NAVD88 height (ftUS) - Geoid18 (ftUS) | 1,913 of 1,913 Tiles |
| VerticalCitationGeoKey (4097) | NAVD88 height (ftUS) - Geoid18 (ftUS)                                       | 1,913 of 1,913 Tiles |

| ✓ Raster            |                           |                |
|---------------------|---------------------------|----------------|
| File Type:          | TIF                       | 1,913 of 1,913 |
| Bands:              | 1                         | 1,913 of 1,913 |
| Grid Size (pixels): | 2250 x 2250               | 1,913 of 1,913 |
| Pixel Resolution:   | 2.00000000' x 2.00000000' | 1,913 of 1,913 |
| Pixel Type:         | 32-bit                    | 1,913 of 1,913 |
| Compression:        | None                      | 1,913 of 1,913 |
| No Data Value:      | -999999                   | 1,913 of 1,913 |



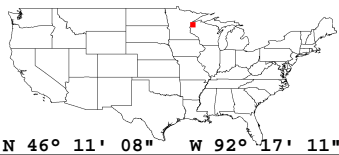
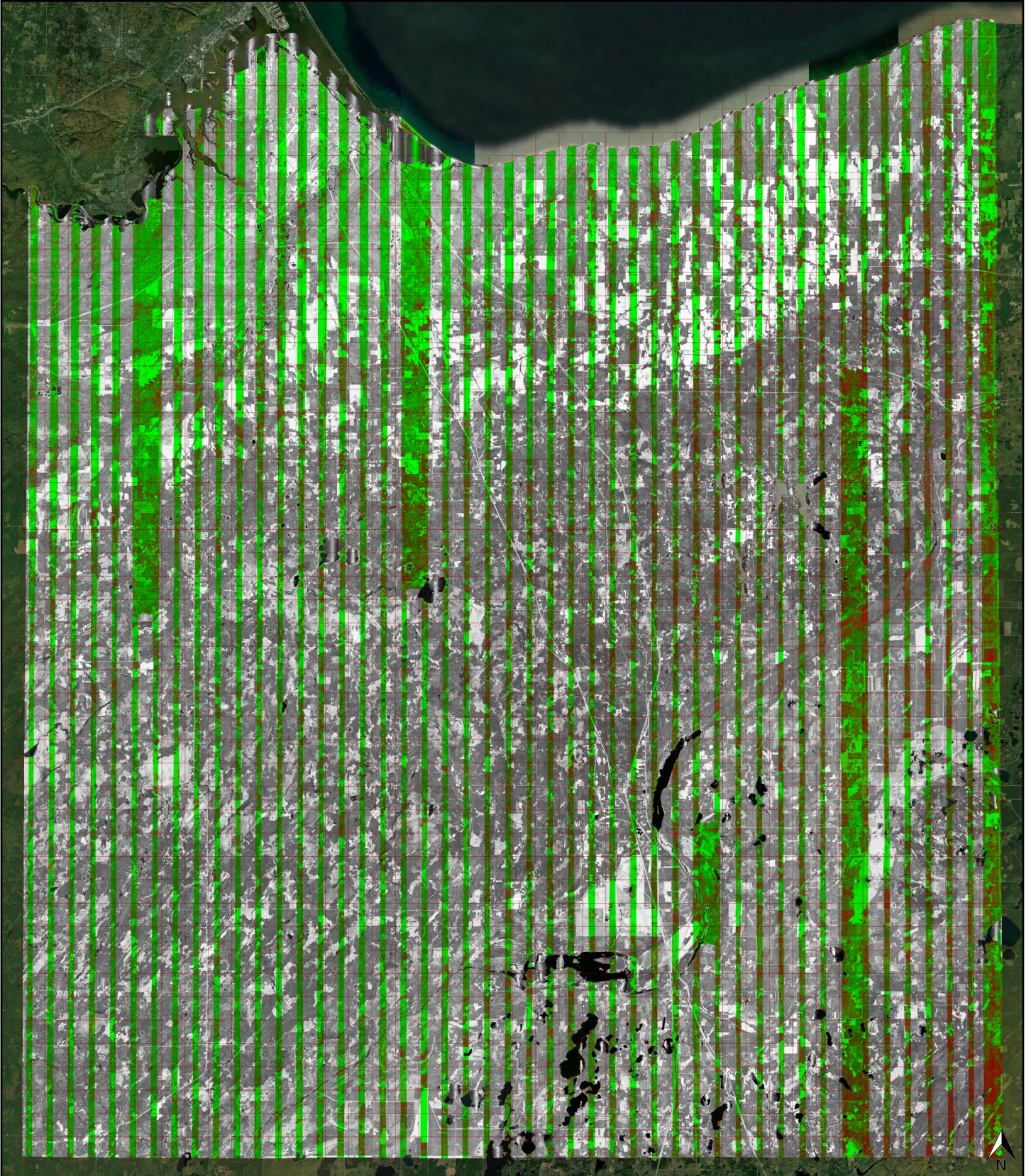
| ✓ General         |   |
|-------------------|---|
| Folder:           | E:\WI_12County_10_B22_230110_Douglas\300213\metadata\spatial_metadata\contractor_provided\swath_separation_images |
| Total # of Files: | 1,913 (All Valid)   |
| Total File Size:  | 28.4 GB (30,488,255,765 bytes)  |

| ✓ Tile Sizes / Coordinate Ranges |                         |
|----------------------------------|-------------------------|
| Median Tile Size:                | 4,500' x 4,500'         |
| Minimum Tile Size:               | 4,500' x 4,500'         |
| Maximum Tile Size:               | 4,500' x 4,500'         |
| X Range:                         | 98080.00' to 287080.00' |
| Y Range:                         | 99190.00' to 319690.00' |

| ✓ Spatial Reference System |  |                      |
|----------------------------|--|----------------------|
| Horizontal Projection      | NAD83(2011) / WISCRS Douglas (ftUS)            | 1,913 of 1,913 Tiles |
| Horizontal Datum           | NAD83 (National Spatial Reference System 2011) | 1,913 of 1,913 Tiles |
| Horizontal Units           | US survey foot                                 | 1,913 of 1,913 Tiles |
| Vertical Datum             | NAVD88 height (ftUS) - Geoid18 (ftUS)          | 1,913 of 1,913 Tiles |
| Vertical Units             | US survey foot                                 | 1,913 of 1,913 Tiles |
| Geoid                      | Geoid18  | 1,913 of 1,913 Tiles |

| ✓ Raster            |                           |                |
|---------------------|---------------------------|----------------|
| File Type:          | TIF                       | 1,913 of 1,913 |
| Bands:              | 3                         | 1,913 of 1,913 |
| Grid Size (pixels): | 2250 x 2250               | 1,913 of 1,913 |
| Pixel Resolution:   | 2.00000000' x 2.00000000' | 1,913 of 1,913 |
| Pixel Type:         | 8-bit (RGB)               | 1,913 of 1,913 |
| Compression:        | NONE                      | 1,913 of 1,913 |
| No Data Value:      | 0                         | 1,913 of 1,913 |





| ✓ General         |  |
|-------------------|--|
| Folder:           | E:\WI_12County_10_B22_230110_Douglas\300213\other\intensity_images |
| Total # of Files: | 1,913 (All Valid)  |
| Total File Size:  | 36.9 GB (39,579,269,842 bytes)                                     |

| ✓ Tile Sizes / Coordinate Ranges |                         |
|----------------------------------|-------------------------|
| Median Tile Size:                | 4,500' x 4,500'         |
| Minimum Tile Size:               | 4,500' x 4,500'         |
| Maximum Tile Size:               | 4,500' x 4,500'         |
| X Range:                         | 98080.00' to 287080.00' |
| Y Range:                         | 99190.00' to 319690.00' |

| ✓ Spatial Reference System |  |                      |
|----------------------------|--|----------------------|
| Horizontal Projection      | NAD83(2011) / WISCRS Douglas (ftUS)            | 1,913 of 1,913 Tiles |
| Horizontal Datum           | NAD83 (National Spatial Reference System 2011) | 1,913 of 1,913 Tiles |
| Horizontal Units           | US survey foot                                 | 1,913 of 1,913 Tiles |
| Vertical Datum             | NONE   | 1,913 of 1,913 Tiles |
| Vertical Units             | NONE   | 1,913 of 1,913 Tiles |
| Geoid                      | NONE   | 1,913 of 1,913 Tiles |

| ✓ Raster            |                                     |                |
|---------------------|-------------------------------------|----------------|
| File Type:          | TIF                                 | 1,913 of 1,913 |
| Bands:              | 1                                   | 1,913 of 1,913 |
| Grid Size (pixels): | 4500 x 4500                         | 1,913 of 1,913 |
| Pixel Resolution:   | 1.00000000' x 1.00000000'           | 1,913 of 1,913 |
| Pixel Type:         | 8-bit Unsigned Integer (MINISBLACK) | 1,913 of 1,913 |
| Compression:        | NONE                                | 1,913 of 1,913 |
| No Data Value:      | 0                                   | 1,913 of 1,913 |

